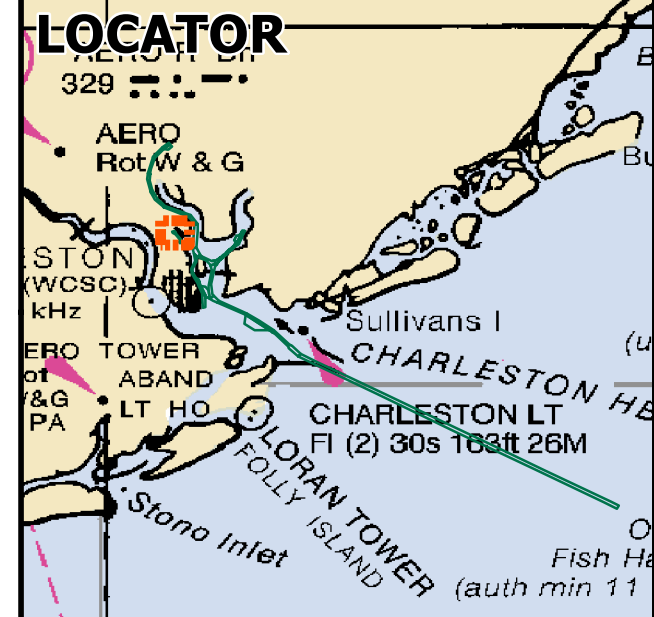
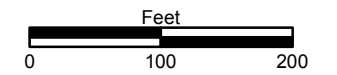
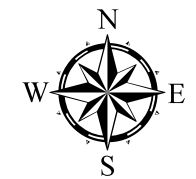


Map 1 Shipyard Creek Sampled Locations SYC14-TB

Legend

- Site Water
- Sampled Location



| Name | Latitude | Longitude | Elevation |
|-------------|----------|-----------|-----------|
| SYC14-REF | 32.72179 | -79.68634 | 4.507697 |
| SYC14-SW | 32.83638 | -79.94416 | 5.795344 |
| SYC14-TB-A | 32.83817 | -79.94652 | 4.620618 |
| SYC14-TB-B | 32.83762 | -79.94693 | 5.471985 |
| SYC14-TB-C | 32.83831 | -79.9453 | 5.432547 |
| SYC14-TB2-D | 32.83704 | -79.94623 | 10.037519 |
| SYC14-TB2-E | 32.83754 | -79.94455 | 7.811466 |
| SYC14-TB2-F | 32.83669 | -79.94477 | 10.853478 |

Coordinate System: NAD 1983 StatePlane South Carolina FIPS 3900 Feet

Source: Esri, DigitalGlobe, GeoEye, I-cubed, Earthstar Geographics, CNES/Airbus DS, USDA, USGS, AEX, Getmapping, Aerogrid, IGN, IGP, swisstopo, and the GIS User Community



This map and/or digital data is for planning purposes only and should not be used to determine the precise location of any feature. Data provided as-is.
 Q:\...14-0003_M&N_Charleston_Shipyard Creek 103\
 Actual_Sampling_Locations\Map1
 Data sources: ANAMAR, USACE, NOAA