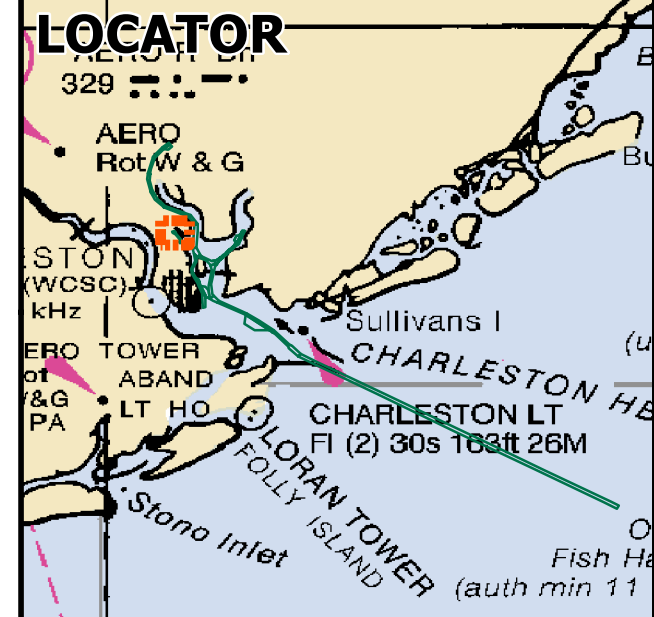
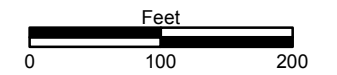
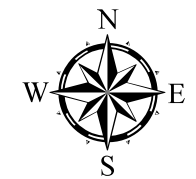


**Map 1  
Shipyard Creek  
Sampled Locations  
SYC14-TB**

**Legend**

- Site Water
- Sampled Location



Name	Latitude	Longitude	Elevation
SYC14-REF	32.72179	-79.68634	4.507697
SYC14-SW	32.83638	-79.94416	5.795344
SYC14-TB-A	32.83817	-79.94652	4.620618
SYC14-TB-B	32.83762	-79.94693	5.471985
SYC14-TB-C	32.83831	-79.9453	5.432547
SYC14-TB2-D	32.83704	-79.94623	10.037519
SYC14-TB2-E	32.83754	-79.94455	7.811466
SYC14-TB2-F	32.83669	-79.94477	10.853478

Coordinate System: NAD 1983 StatePlane South Carolina FIPS 3900 Feet

Source: Esri, DigitalGlobe, GeoEye, I-cubed, Earthstar Geographics, CNES/Airbus DS, USDA, USGS, AEX, Getmapping, Aerogrid, IGN, IGP, swisstopo, and the GIS User Community



This map and/or digital data is for planning purposes only and should not be used to determine the precise location of any feature. Data provided as-is.  
Q:\...14-0003\_M&N\_Charleston\_Shipyard Creek 103\  
Actual\_Sampling\_Locations\Map1  
Data sources: ANAMAR, USACE, NOAA

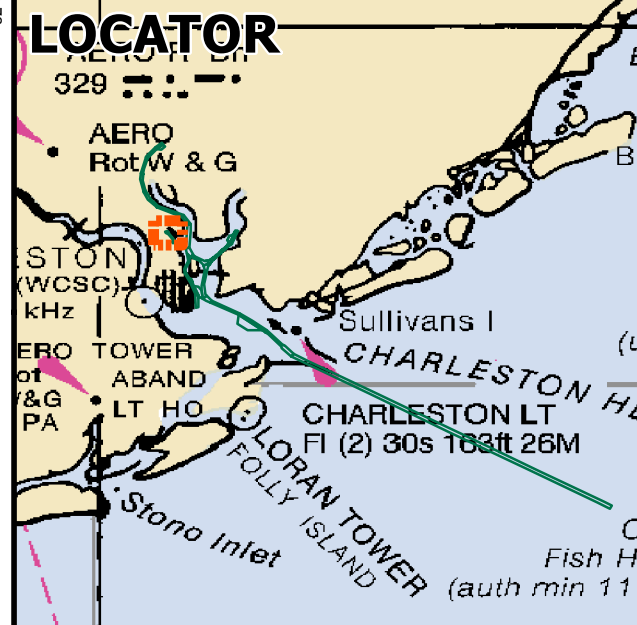
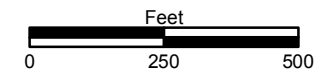
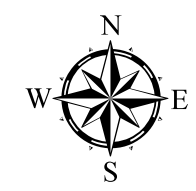




## Map 2 Shipyard Creek Sampling Locations SYC14-AC

### Legend

- Sampled Location



Coordinate System: NAD 1983 StatePlane South Carolina FIPS 3900 Feet

Source: Esri, DigitalGlobe, GeoEye, I-cubed, Earthstar Geographics, CNES/Airbus DS, USDA, USGS, AEX, Getmapping, Aerogrid, IGN, IGP, swisstopo, and the GIS User Community


**ANAMAR**  
Environmental Consulting, Inc.

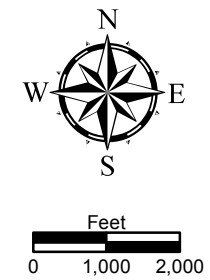
This map and/or digital data is for planning purposes only and should not be used to determine the precise location of any feature. Data provided as-is.  
Q:\...14-0003\_M&N\_Charleston\_Shipyard Creek 103\Actual\_Sampling\_Locations\Map2  
Data sources: ANAMAR, USACE, NOAA



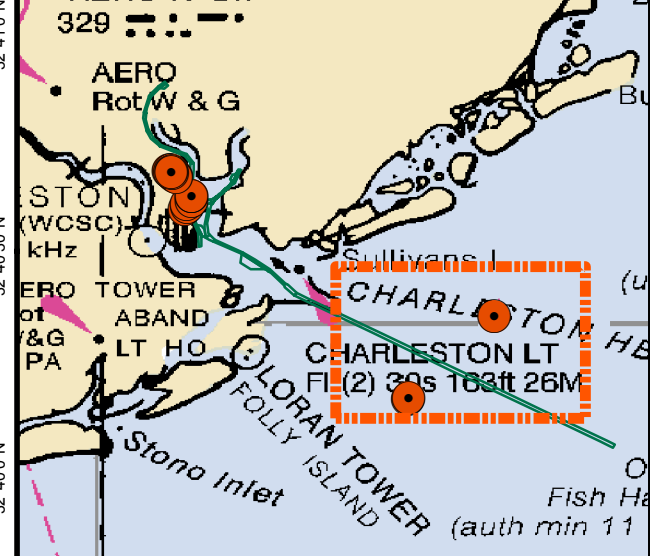
### Map 3 Shipyards Creek Sampled Locations Offshore Locations

#### Legend

-  Sampled Location

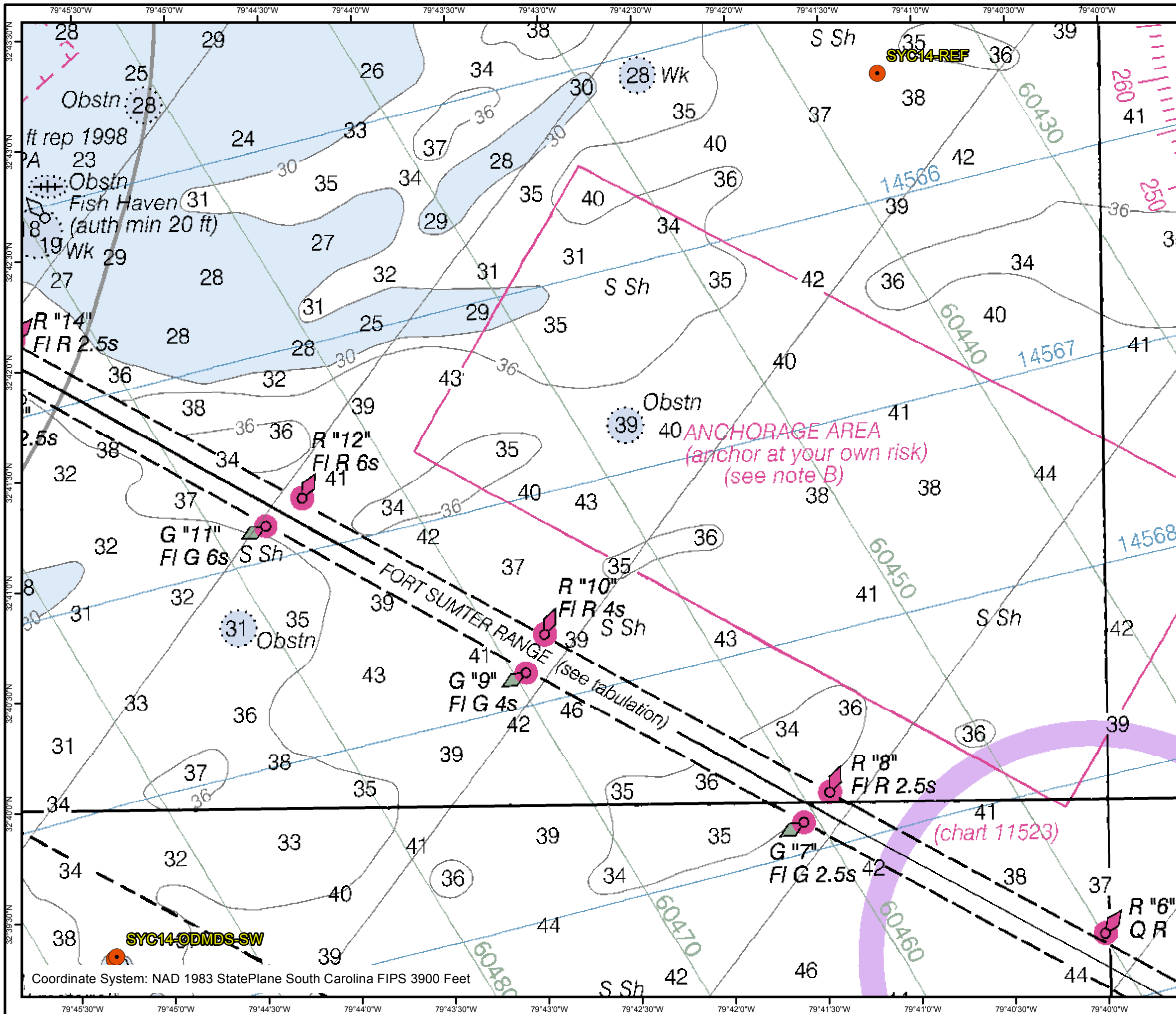


#### LOCATOR



**ANAMAR**  
Environmental Consulting, Inc.

This map and/or digital data is for planning purposes only and should not be used to determine the precise location of any feature. Data provided as-is.  
Q:\...14-0003\_M&N\_Charleston\_Shipyard\_Creek\_103\  
Actual\_Sampling\_Locations\Map3\_OS  
Data sources: ANAMAR, USACE, NOAA

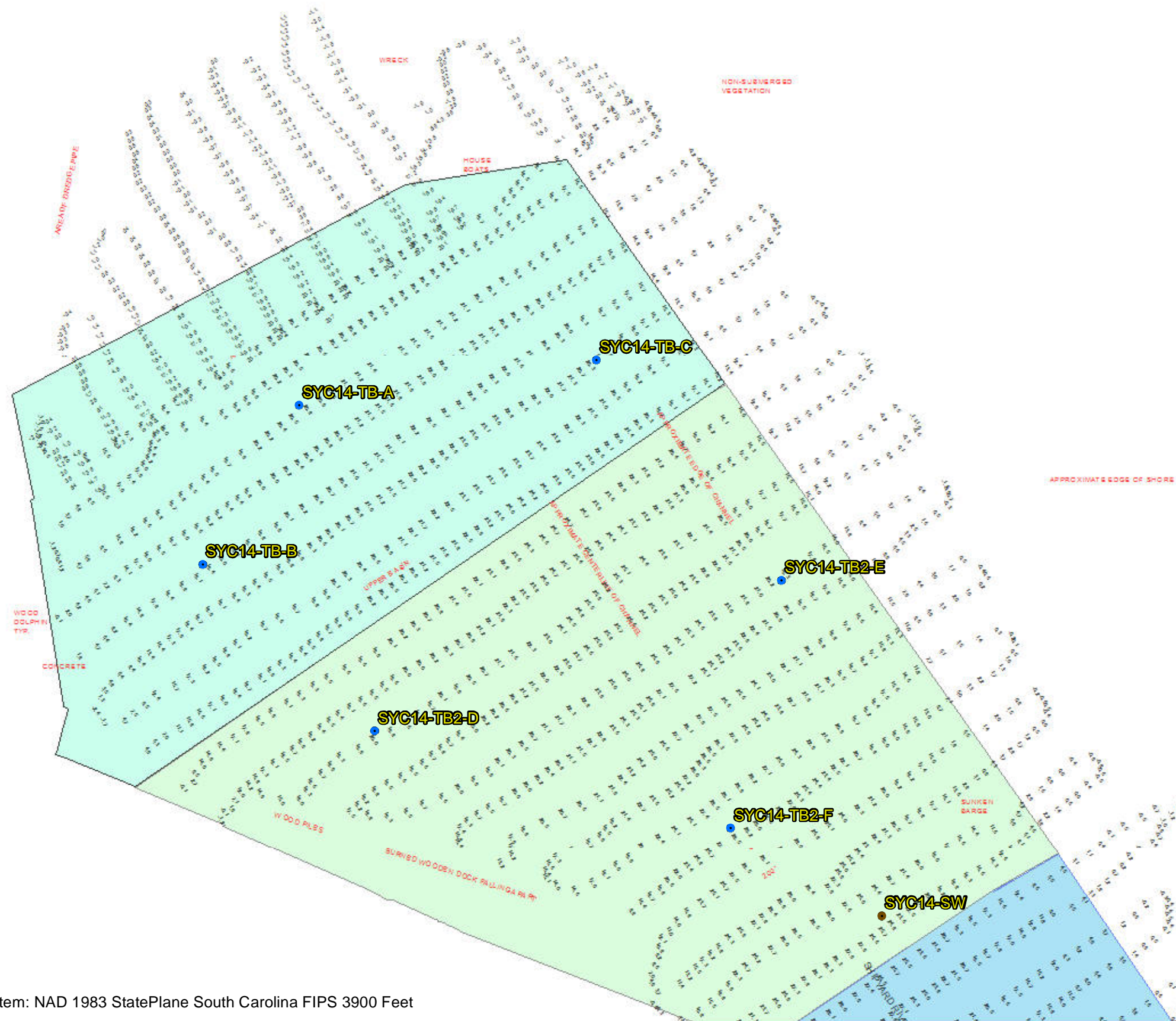
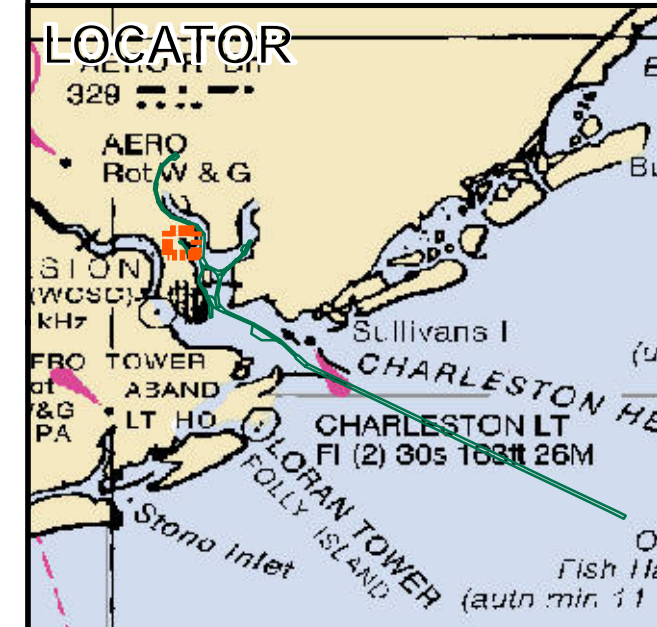
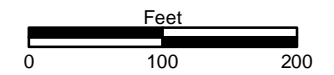
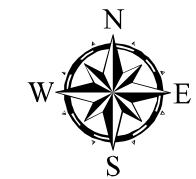




Map 4  
Shipyard Creek Bathymetry  
Actual Sampling Locations  
SYC14-TB

**Legend**

- Site Water
- Sampled Location



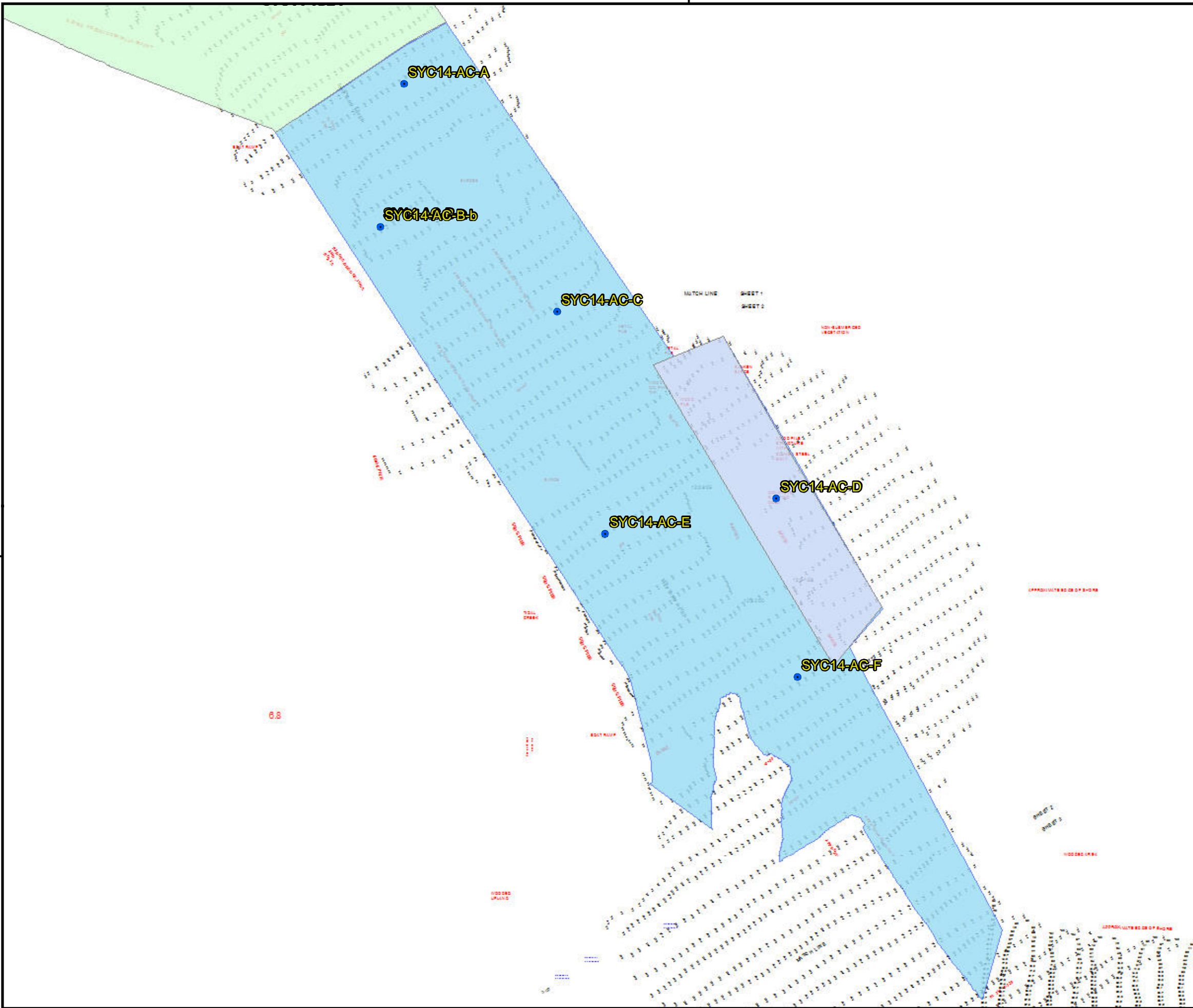
Coordinate System: NAD 1983 StatePlane South Carolina FIPS 3900 Feet

**ANAMAR**  
Environmental Consulting, Inc.

This map and/or digital data is for planning purposes only and should not be used to determine the precise location of any feature. Data provided as-is.  
Q:\...14-0003\_M&N\_Charleston\_Shipyard Creek 103\  
Actual Sampling Locations\Map4  
Data sources: ANAMAR, USACE, NOAA



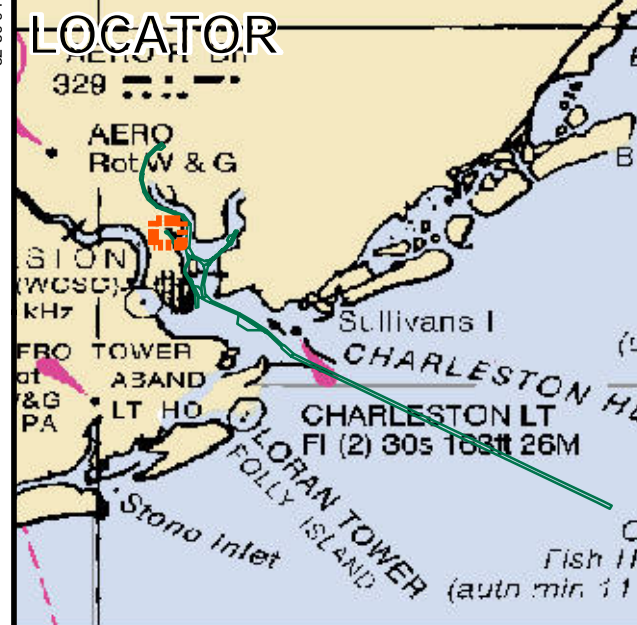
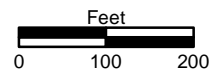
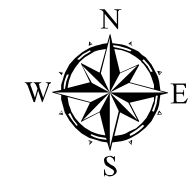
79°56'30"W



Map 5  
Shipyard Creek Bathymetry  
Proposed Sampling Locations  
SYC14-AC

**Legend**

- Sampled Location



**ANAMAR**  
Environmental Consulting, Inc.

This map and/or digital data is for planning purposes only and should not be used to determine the precise location of any feature. Data provided as-is.  
Q:\14-0003\_M&N\_Charleston\_Shipyard Creek 103\Actual Sampling Locations\Map5  
Data sources: ANAMAR, USACE, NOAA

79°56'30"W

32°50'00"N

32°50'00"N