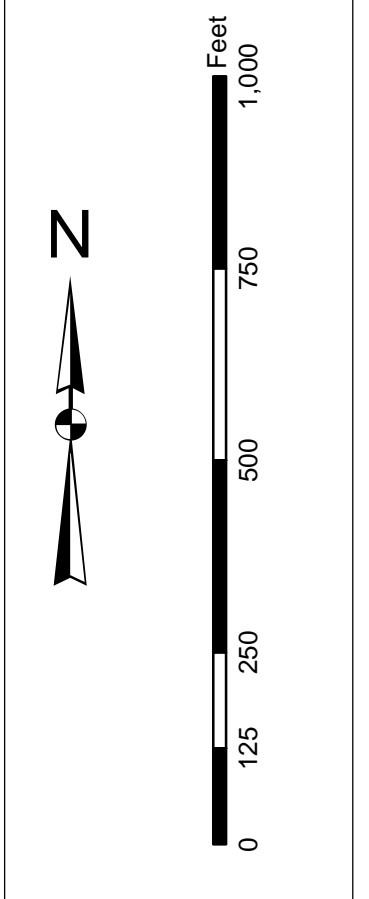


In accordance with the U.S. Army Corps of Engineers, Charleston District Office, Special Districts have been established to provide for the efficient and economical management of the Corps' resources. This map is intended to be used for navigation purposes only. It is not intended to be used for any other purpose. The information on this map is based on the most current data available. It is not intended to be used for any other purpose. The information on this map is based on the most current data available. It is not intended to be used for any other purpose.

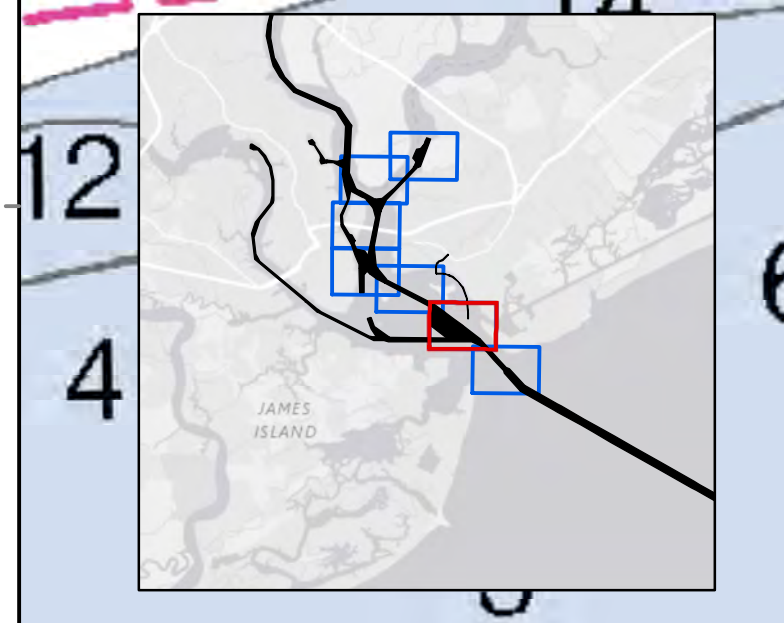
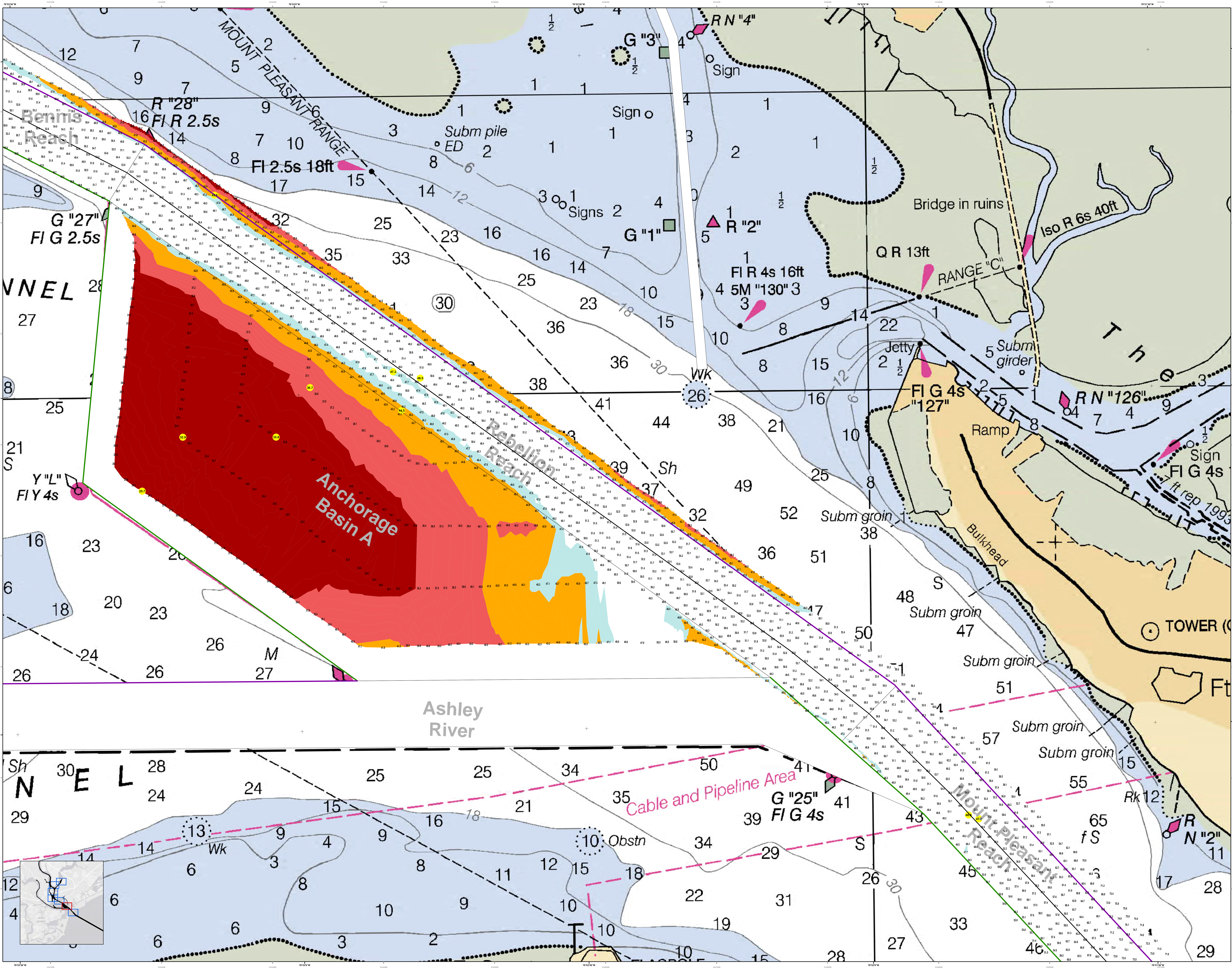


Legend

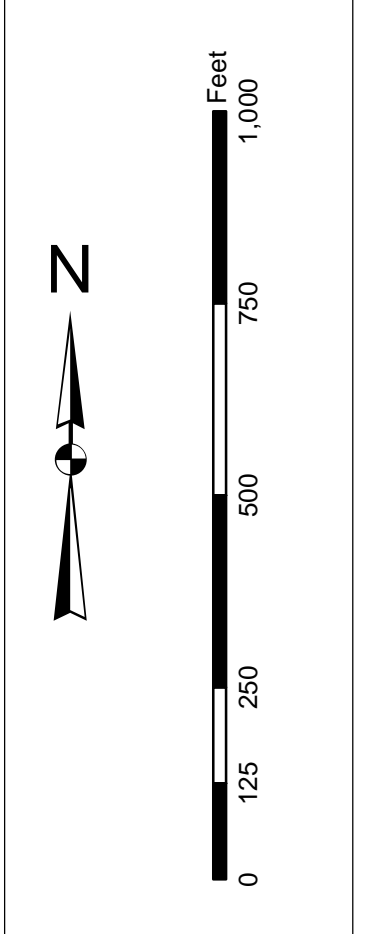
Symbol	Description
[Symbol]	Water
[Symbol]	Shoals
[Symbol]	Submerged
[Symbol]	Obstruction
[Symbol]	Structure
[Symbol]	Range
[Symbol]	Light
[Symbol]	Sound
[Symbol]	Other

Designed By: [Name]	Production Date: 11 Mar 2016
Reviewed By: [Name]	Project Reference Number: [Number]
Scale: 1 inch = 250 feet	Projection: NAD 1983 StatePlane South Carolina FIPS 3900 Feet

Charleston Lower Harbor Channel
The information depicted on this map represents the results of surveys made on the dates indicated and call on other charts for the most current general conditions existing at that time.
Concluded on: 08 Mar 2016
Charleston, South Carolina



In accordance with the U.S. Army Corps of Engineers, Charleston District Office, Special Data Branch has been authorized to publish this chart. The information on this chart is based on the most current data available. The information on this chart is not to be used for navigation. The information on this chart is not to be used for navigation. The information on this chart is not to be used for navigation.

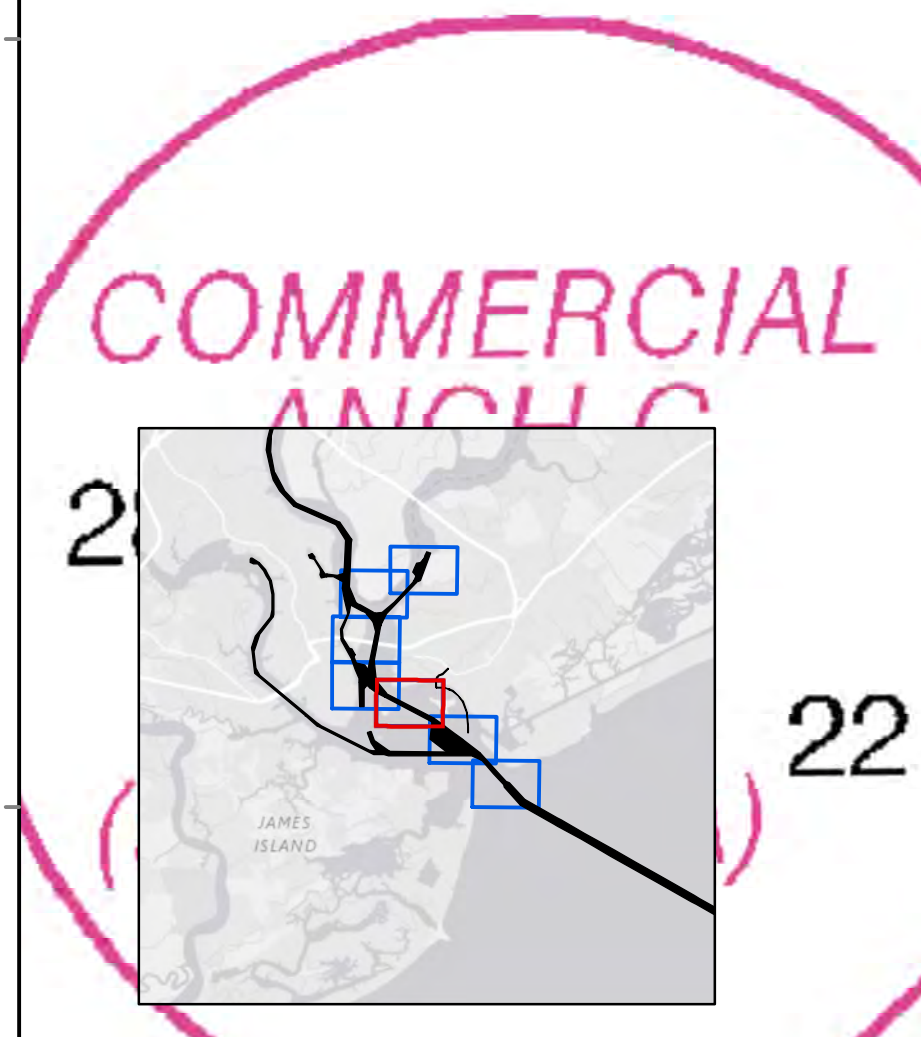
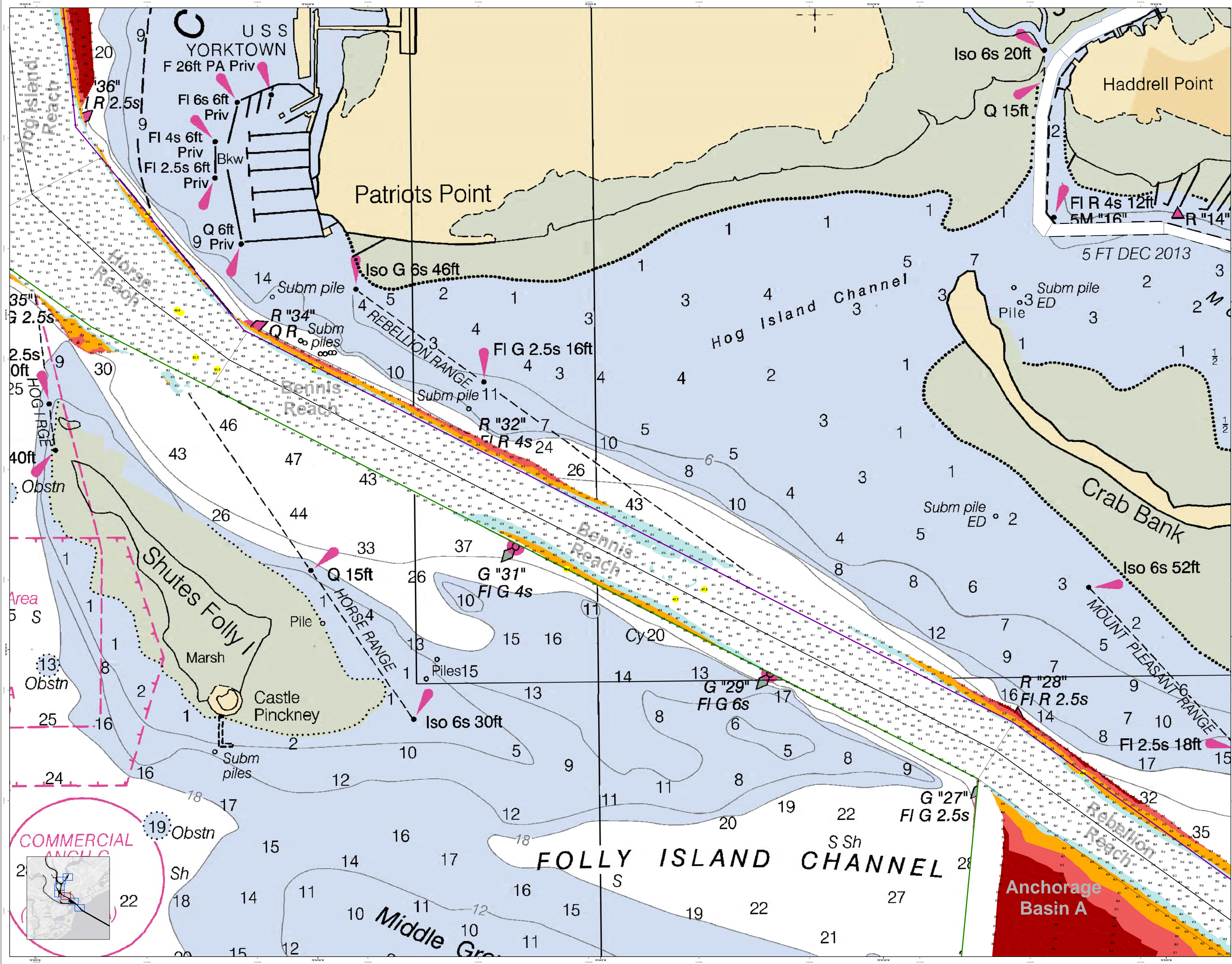


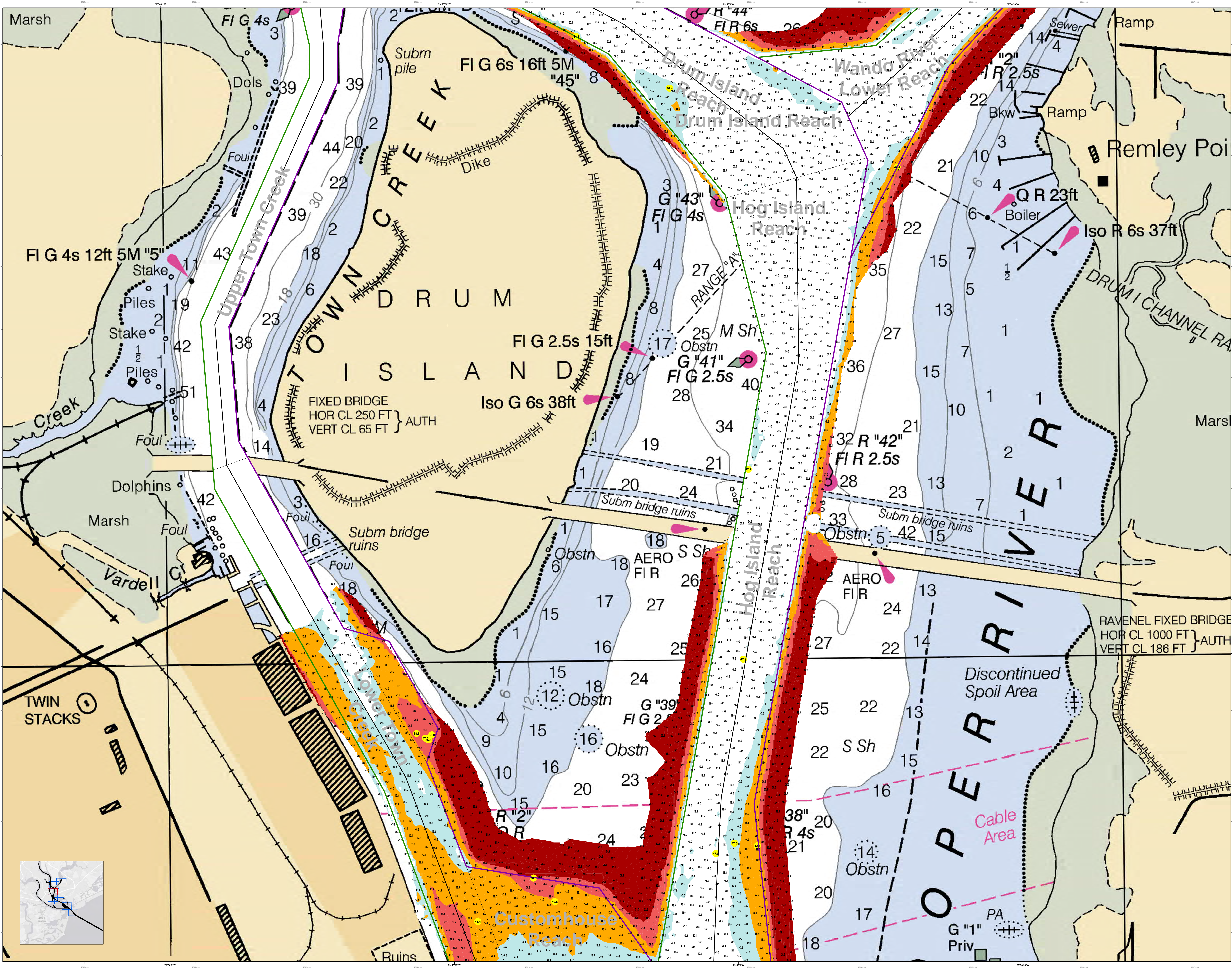
Legend

Symbol	Description
[Color swatches]	Depth Soundings
[Color swatches]	Obstructions
[Color swatches]	Navigation Aids
[Color swatches]	Structures
[Color swatches]	Other

Designed By:	U.S. Army Corps of Engineers
Reviewed By:	U.S. Army Corps of Engineers
Scale:	1 inch = 250 feet
Projection:	NAD 1983 StatePlane South Carolina FIPS 3900 Feet
Survey Date:	09 Mar 2016
Production Date:	11 Mar 2016
Project Reference Number:	16C0010
Sheet Name:	C002
Sheet Count:	3 of 7

Charleston Lower Harbor Channel
The information depicted on this map represents the results of surveys made on the dates indicated and call on other charts for general information. The information on this chart is not to be used for navigation. Concluded on: 09 Mar 2016
Charleston, South Carolina

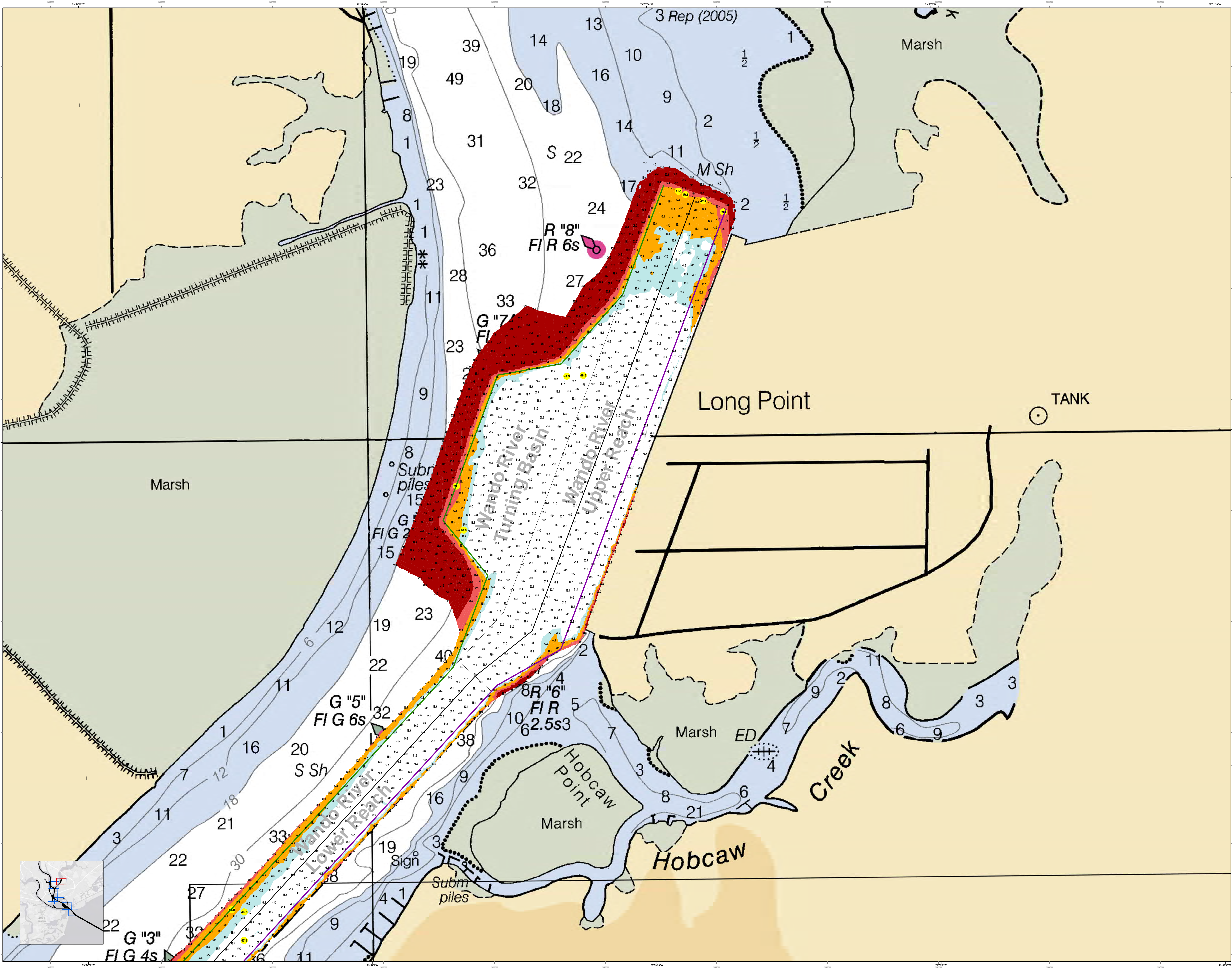




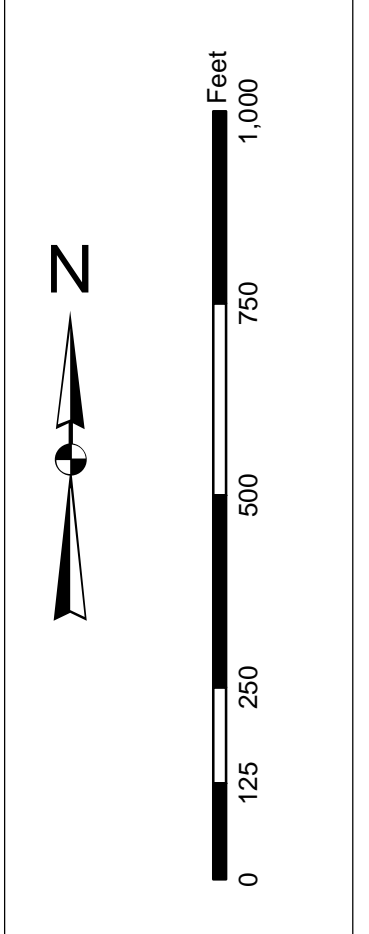
U.S. Army Corps of Engineers
Charleston District

Production Notes:
 1. This is a hydrographic chart showing water depths and navigational aids. It is not a nautical chart.
 2. The information depicted on this chart is based on the most recent available data.
 3. Users are encouraged to use all prudent safety practices.
 4. This chart is not to be used for navigation purposes.
 5. The information on this chart is not to be used for navigation purposes.
 6. The information on this chart is not to be used for navigation purposes.
 7. The information on this chart is not to be used for navigation purposes.
 8. The information on this chart is not to be used for navigation purposes.
 9. The information on this chart is not to be used for navigation purposes.
 10. The information on this chart is not to be used for navigation purposes.

Legend:
 Depth Soundings: 0-15, 16-20, 21-25, 26-30, 31-35, 36-40, 41-45, 46-50, 51-55, 56-60, 61-65, 66-70, 71-75, 76-80, 81-85, 86-90, 91-95, 96-100, 101-105, 106-110, 111-115, 116-120, 121-125, 126-130, 131-135, 136-140, 141-145, 146-150, 151-155, 156-160, 161-165, 166-170, 171-175, 176-180, 181-185, 186-190, 191-195, 196-200, 201-205, 206-210, 211-215, 216-220, 221-225, 226-230, 231-235, 236-240, 241-245, 246-250, 251-255, 256-260, 261-265, 266-270, 271-275, 276-280, 281-285, 286-290, 291-295, 296-300, 301-305, 306-310, 311-315, 316-320, 321-325, 326-330, 331-335, 336-340, 341-345, 346-350, 351-355, 356-360, 361-365, 366-370, 371-375, 376-380, 381-385, 386-390, 391-395, 396-400, 401-405, 406-410, 411-415, 416-420, 421-425, 426-430, 431-435, 436-440, 441-445, 446-450, 451-455, 456-460, 461-465, 466-470, 471-475, 476-480, 481-485, 486-490, 491-495, 496-500, 501-505, 506-510, 511-515, 516-520, 521-525, 526-530, 531-535, 536-540, 541-545, 546-550, 551-555, 556-560, 561-565, 566-570, 571-575, 576-580, 581-585, 586-590, 591-595, 596-600, 601-605, 606-610, 611-615, 616-620, 621-625, 626-630, 631-635, 636-640, 641-645, 646-650, 651-655, 656-660, 661-665, 666-670, 671-675, 676-680, 681-685, 686-690, 691-695, 696-700, 701-705, 706-710, 711-715, 716-720, 721-725, 726-730, 731-735, 736-740, 741-745, 746-750, 751-755, 756-760, 761-765, 766-770, 771-775, 776-780, 781-785, 786-790, 791-795, 796-800, 801-805, 806-810, 811-815, 816-820, 821-825, 826-830, 831-835, 836-840, 841-845, 846-850, 851-855, 856-860, 861-865, 866-870, 871-875, 876-880, 881-885, 886-890, 891-895, 896-900, 901-905, 906-910, 911-915, 916-920, 921-925, 926-930, 931-935, 936-940, 941-945, 946-950, 951-955, 956-960, 961-965, 966-970, 971-975, 976-980, 981-985, 986-990, 991-995, 996-1000, 1001-1005, 1006-1010, 1011-1015, 1016-1020, 1021-1025, 1026-1030, 1031-1035, 1036-1040, 1041-1045, 1046-1050, 1051-1055, 1056-1060, 1061-1065, 1066-1070, 1071-1075, 1076-1080, 1081-1085, 1086-1090, 1091-1095, 1096-1100, 1101-1105, 1106-1110, 1111-1115, 1116-1120, 1121-1125, 1126-1130, 1131-1135, 1136-1140, 1141-1145, 1146-1150, 1151-1155, 1156-1160, 1161-1165, 1166-1170, 1171-1175, 1176-1180, 1181-1185, 1186-1190, 1191-1195, 1196-1200, 1201-1205, 1206-1210, 1211-1215, 1216-1220, 1221-1225, 1226-1230, 1231-1235, 1236-1240, 1241-1245, 1246-1250, 1251-1255, 1256-1260, 1261-1265, 1266-1270, 1271-1275, 1276-1280, 1281-1285, 1286-1290, 1291-1295, 1296-1300, 1301-1305, 1306-1310, 1311-1315, 1316-1320, 1321-1325, 1326-1330, 1331-1335, 1336-1340, 1341-1345, 1346-1350, 1351-1355, 1356-1360, 1361-1365, 1366-1370, 1371-1375, 1376-1380, 1381-1385, 1386-1390, 1391-1395, 1396-1400, 1401-1405, 1406-1410, 1411-1415, 1416-1420, 1421-1425, 1426-1430, 1431-1435, 1436-1440, 1441-1445, 1446-1450, 1451-1455, 1456-1460, 1461-1465, 1466-1470, 1471-1475, 1476-1480, 1481-1485, 1486-1490, 1491-1495, 1496-1500, 1501-1505, 1506-1510, 1511-1515, 1516-1520, 1521-1525, 1526-1530, 1531-1535, 1536-1540, 1541-1545, 1546-1550, 1551-1555, 1556-1560, 1561-1565, 1566-1570, 1571-1575, 1576-1580, 1581-1585, 1586-1590, 1591-1595, 1596-1600, 1601-1605, 1606-1610, 1611-1615, 1616-1620, 1621-1625, 1626-1630, 1631-1635, 1636-1640, 1641-1645, 1646-1650, 1651-1655, 1656-1660, 1661-1665, 1666-1670, 1671-1675, 1676-1680, 1681-1685, 1686-1690, 1691-1695, 1696-1700, 1701-1705, 1706-1710, 1711-1715, 1716-1720, 1721-1725, 1726-1730, 1731-1735, 1736-1740, 1741-1745, 1746-1750, 1751-1755, 1756-1760, 1761-1765, 1766-1770, 1771-1775, 1776-1780, 1781-1785, 1786-1790, 1791-1795, 1796-1800, 1801-1805, 1806-1810, 1811-1815, 1816-1820, 1821-1825, 1826-1830, 1831-1835, 1836-1840, 1841-1845, 1846-1850, 1851-1855, 1856-1860, 1861-1865, 1866-1870, 1871-1875, 1876-1880, 1881-1885, 1886-1890, 1891-1895, 1896-1900, 1901-1905, 1906-1910, 1911-1915, 1916-1920, 1921-1925, 1926-1930, 1931-1935, 1936-1940, 1941-1945, 1946-1950, 1951-1955, 1956-1960, 1961-1965, 1966-1970, 1971-1975, 1976-1980, 1981-1985, 1986-1990, 1991-1995, 1996-2000, 2001-2005, 2006-2010, 2011-2015, 2016-2020, 2021-2025, 2026-2030, 2031-2035, 2036-2040, 2041-2045, 2046-2050, 2051-2055, 2056-2060, 2061-2065, 2066-2070, 2071-2075, 2076-2080, 2081-2085, 2086-2090, 2091-2095, 2096-2100, 2101-2105, 2106-2110, 2111-2115, 2116-2120, 2121-2125, 2126-2130, 2131-2135, 2136-2140, 2141-2145, 2146-2150, 2151-2155, 2156-2160, 2161-2165, 2166-2170, 2171-2175, 2176-2180, 2181-2185, 2186-2190, 2191-2195, 2196-2200, 2201-2205, 2206-2210, 2211-2215, 2216-2220, 2221-2225, 2226-2230, 2231-2235, 2236-2240, 2241-2245, 2246-2250, 2251-2255, 2256-2260, 2261-2265, 2266-2270, 2271-2275, 2276-2280, 2281-2285, 2286-2290, 2291-2295, 2296-2300, 2301-2305, 2306-2310, 2311-2315, 2316-2320, 2321-2325, 2326-2330, 2331-2335, 2336-2340, 2341-2345, 2346-2350, 2351-2355, 2356-2360, 2361-2365, 2366-2370, 2371-2375, 2376-2380, 2381-2385, 2386-2390, 2391-2395, 2396-2400, 2401-2405, 2406-2410, 2411-2415, 2416-2420, 2421-2425, 2426-2430, 2431-2435, 2436-2440, 2441-2445, 2446-2450, 2451-2455, 2456-2460, 2461-2465, 2466-2470, 2471-2475, 2476-2480, 2481-2485, 2486-2490, 2491-2495, 2496-2500, 2501-2505, 2506-2510, 2511-2515, 2516-2520, 2521-2525, 2526-2530, 2531-2535, 2536-2540, 2541-2545, 2546-2550, 2551-2555, 2556-2560, 2561-2565, 2566-2570, 2571-2575, 2576-2580, 2581-2585, 2586-2590, 2591-2595, 2596-2600, 2601-2605, 2606-2610, 2611-2615, 2616-2620, 2621-2625, 2626-2630, 2631-2635, 2636-2640, 2641-2645, 2646-2650, 2651-2655, 2656-2660, 2661-2665, 2666-2670, 2671-2675, 2676-2680, 2681-2685, 2686-2690, 2691-2695, 2696-2700, 2701-2705, 2706-2710, 2711-2715, 2716-2720, 2721-2725, 2726-2730, 2731-2735, 2736-2740, 2741-2745, 2746-2750, 2751-2755, 2756-2760, 2761-2765, 2766-2770, 2771-2775, 2776-2780, 2781-2785, 2786-2790, 2791-2795, 2796-2800, 2801-2805, 2806-2810, 2811-2815, 2816-2820, 2821-2825, 2826-2830, 2831-2835, 2836-2840, 2841-2845, 2846-2850, 2851-2855, 2856-2860, 2861-2865, 2866-2870, 2871-2875, 2876-2880, 2881-2885, 2886-2890, 2891-2895, 2896-2900, 2901-2905, 2906-2910, 2911-2915, 2916-2920, 2921-2925, 2926-2930, 2931-2935, 2936-2940, 2941-2945, 2946-2950, 2951-2955, 2956-2960, 2961-2965, 2966-2970, 2971-2975, 2976-2980, 2981-2985, 2986-2990, 2991-2995, 2996-3000, 3001-3005, 3006-3010, 3011-3015, 3016-3020, 3021-3025, 3026-3030, 3031-3035, 3036-3040, 3041-3045, 3046-3050, 3051-3055, 3056-3060, 3061-3065, 3066-3070, 3071-3075, 3076-3080, 3081-3085, 3086-3090, 3091-3095, 3096-3100, 3101-3105, 3106-3110, 3111-3115, 3116-3120, 3121-3125, 3126-3130, 3131-3135, 3136-3140, 3141-3145, 3146-3150, 3151-3155, 3156-3160, 3161-3165, 3166-3170, 3171-3175, 3176-3180, 3181-3185, 3186-3190, 3191-3195, 3196-3200, 3201-3205, 3206-3210, 3211-3215, 3216-3220, 3221-3225, 3226-3230, 3231-3235, 3236-3240, 3241-3245, 3246-3250, 3251-3255, 3256-3260, 3261-3265, 3266-3270, 3271-3275, 3276-3280, 3281-3285, 3286-3290, 3291-3295, 3296-3300, 3301-3305, 3306-3310, 3311-3315, 3316-3320, 3321-3325, 3326-3330, 3331-3335, 3336-3340, 3341-3345, 3346-3350, 3351-3355, 3356-3360, 3361-3365, 3366-3370, 3371-3375, 3376-3380, 3381-3385, 3386-3390, 3391-3395, 3396-3400, 3401-3405, 3406-3410, 3411-3415, 3416-3420, 3421-3425, 3426-3430, 3431-3435, 3436-3440, 3441-3445, 3446-3450, 3451-3455, 3456-3460, 3461-3465, 3466-3470, 3471-3475, 3476-3480, 3481-3485, 3486-3490, 3491-3495, 3496-3500, 3501-3505, 3506-3510, 3511-3515, 3516-3520, 3521-3525, 3526-3530, 3531-3535, 3536-3540, 3541-3545, 3546-3550, 3551-3555, 3556-3560, 3561-3565, 3566-3570, 3571-3575, 3576-3580, 3581-3585, 3586-3590, 3591-3595, 3596-3600, 3601-3605, 3606-3610, 3611-3615, 3616-3620, 3621-3625, 3626-3630, 3631-3635, 3636-3640, 3641-3645, 3646-3650, 3651-3655, 3656-3660, 3661-3665, 3666-3670, 3671-3675, 3676-3680, 3681-3685, 3686-3690, 3691-3695, 3696-3700, 3701-3705, 3706-3710, 3711-3715, 3716-3720, 3721-3725, 3726-3730, 3731-3735, 3736-3740, 3741-3745, 3746-3750, 3751-3755, 3756-3760, 3761-3765, 3766-3770, 3771-3775, 3776-3780, 3781-3785, 3786-3790, 3791-3795, 3796-3800, 3801-3805, 3806-3810, 3811-3815, 3816-3820, 3821-3825, 3826-3830, 3831-3835, 3836-3840, 3841-3845, 3846-3850, 3851-3855, 3856-3860, 3861-3865, 3866-3870, 3871-3875, 3876-3880, 3881-3885, 3886-3890, 3891-3895, 3896-3900, 3901-3905, 3906-3910, 3911-3915, 3916-3920, 3921-3925, 3926-3930, 3931-3935, 3936-3940, 3941-3945, 3946-3950, 3951-3955, 3956-3960, 3961-3965, 3966-3970, 3971-3975, 3976-3980, 3981-3985, 3986-3990, 3991-3995, 3996-4000, 4001-4005, 4006-4010, 4011-4015, 4016-4020, 4021-4025, 4026-4030, 4031-4035, 4036-4040, 4041-4045, 4046-4050, 4051-4055, 4056-4060, 4061-4065, 4066-4070, 4071-4075, 4076-4080, 4081-4085, 4086-4090, 4091-4095, 4096-4100, 4101-4105, 4106-4110, 4111-4115, 4116-4120, 4121-4125, 4126-4130, 4131-4135, 4136-4140, 4141-4145, 4146-4150, 4151-4155, 4156-4160, 4161-4165, 4166-4170, 4171-4175, 4176-4180, 4181-4185, 4186-4190, 4191-4195, 4196-4200, 4201-4205, 4206-4210, 4211-4215, 4216-4220, 4221-4225, 4226-4230, 4231-4235, 4236-4240, 4241-4245, 4246-4250, 4251-4255, 4256-4260, 4261-4265, 4266-4270, 4271-4275, 4276-4280, 4281-4285, 4286-4290, 4291-4295, 4296-4300, 4301-4305, 4306-4310, 4311-4315, 4316-4320, 4321-4325, 4326-4330, 4331-4335, 4336-4340, 4341-4345, 4346-4350, 4351-4355, 4356-4360, 4361-4365, 4366-4370, 4371-4375, 4376-4380, 4381-4385, 4386-4390, 4391-4395, 4396-4400, 4401-4405, 4406-4410, 4411-4415, 4416-4420, 4421-4425, 4426-4430, 4431-4435, 4436-4440, 4441-4445, 4446-4450, 4451-4455, 4456-4460, 4461-4465, 4466-4470, 4471-4475, 4476-4480, 4481-4485, 4486-4490, 4491-4495, 4496-4500, 4501-4505, 4506-4510, 4511-4515, 4516-4520, 4521-4525, 4526-4530, 4531-4535, 4536-4540, 4541-4545, 4546-4550, 4551-4555, 4556-4560, 4561-4565, 4566-4570, 4571-4575, 4576-4580, 4581-4585, 4586-4590, 4591-4595, 4596-4600, 4601-4605, 4606-4610, 4611-4615, 4616-4620, 4621-4625, 4626-4630, 4631-4635, 4636-4640, 4641-4645, 4646-4650, 4651-4655, 4656-4660, 4661-4665, 4666-4670, 4671-4675, 4676-4680, 4681-4685, 4686-4690, 4691-4695, 4696-4700, 4701-4705, 4706-4710, 4711-4715, 4716-4720, 4721-4725, 4726-4730, 4731-4735, 4736-4740, 4741-4745, 4746-4750, 4751-4755, 4756-4760, 4761-4765, 4766-4770, 4771-4775, 4776-4780, 4781-4785, 4786-4790, 4791-4795, 4796-4800, 4801-4805, 4806-4810, 4811-4815, 4816-4820, 4821-4825, 4826-4830, 4831-4835, 4836-4840, 4841-4845, 4846-4850, 4851-4855, 4856-4860, 4861-4865, 4866-4870, 4871-4875, 4876-4880, 4881-4885, 4886-4890, 4891-4895, 4896-4900, 4901-4905, 4906-4910, 4911-4915, 4916-4920, 4921-4925, 4926-4930, 4931-4935, 4936-4940, 4941-4945, 4946-4950, 4951-4955, 4956-4960, 4961-4965, 4966-4970, 4971-4975, 4976-4980, 4981-4985, 4986-4990, 4991-4995, 4996-5000, 5001-5005, 5006-5010, 5011-5015, 5016-5020, 5021-5025, 5026-5030, 5031-5035, 5036-5040, 5041-5045, 5046-5050, 5051-5055, 5056-5060, 5061-5065, 5066-5070, 5071-5075, 5076-5080, 5081-5085, 5086-5090, 5091-5095, 5096-5100, 5101-5105, 5106-5110, 5111-5115, 5116-5120, 5121-5125, 5126-5130, 5131-5135, 5136-5140, 5141-5145, 5146-5150, 5151-5155, 5156-5160, 5161-5165, 5166-5170, 5171-5175, 5176-5180, 5181-5185, 5186-5190, 5191-5195, 5196-5200, 5201-5205, 5206-5210, 5211-5215, 5216-5220, 5221-5225, 5226-5230, 5231-5235, 5236-5240, 5241-5245, 5246-5250, 5251-5255, 5256-5260, 5261-5265, 5266-5270, 5271-5275, 5276-5280, 5281-5285, 5286-5290, 5291-5295, 5296-5300, 5301-5305, 5306-5310, 5311-5315, 5316-5320, 5321-5325, 5326-5330, 5331-5335, 5336-5340, 5341-5345, 5346-5350, 5351-5355, 5356-5360, 5361-5365, 5366-5370, 5371-5375, 5376-5380, 5381-5385, 5386-5390, 5391-5395, 5396-5400, 5401-5405, 5406-5410, 5411-5415, 5416-5420, 5421-5425, 5426-5430, 5431-5435, 5436-5440, 5441-5445, 5446-5450, 5451-5455, 5456-5460, 5461-5465, 5466-5470, 5471-5475, 5476-5480, 5481-5485, 5486-5490, 5491-5495, 5496-5500, 5501-5505, 5506-5510, 5511-5515, 5516-5520, 5521-5525, 5526-5530, 5531-5535, 5536-5540, 5541-5545, 5546-5550, 5551-5555, 5556-5560, 5561-5565, 5566-5570, 5571-5575, 5576-5580, 5581-5585, 5586-5590, 5591-5595, 5596-5600, 5601-5605, 5606-5610, 5611-5615, 5616-5620, 5621-5625, 56



In its capacity as the U.S. Army Corps of Engineers, Charleston District Office, Special District Office, the District Office is not responsible for the accuracy of the data shown on this chart. The user is advised to verify the accuracy of the data shown on this chart before using it for any purpose. The user is also advised to verify the accuracy of the data shown on this chart before using it for any purpose. The user is also advised to verify the accuracy of the data shown on this chart before using it for any purpose.



Legend

- Depth Soundings: 1, 2, 3, 4, 5, 6, 7, 8, 9, 10, 11, 12, 13, 14, 15, 16, 17, 18, 19, 20, 21, 22, 23, 24, 25, 26, 27, 28, 29, 30, 31, 32, 33, 34, 35, 36, 37, 38, 39
- USACE Boundaries: 1, 2, 3, 4, 5, 6, 7, 8, 9, 10, 11, 12, 13, 14, 15, 16, 17, 18, 19, 20, 21, 22, 23, 24, 25, 26, 27, 28, 29, 30, 31, 32, 33, 34, 35, 36, 37, 38, 39
- USACE Boundaries: 1, 2, 3, 4, 5, 6, 7, 8, 9, 10, 11, 12, 13, 14, 15, 16, 17, 18, 19, 20, 21, 22, 23, 24, 25, 26, 27, 28, 29, 30, 31, 32, 33, 34, 35, 36, 37, 38, 39
- USACE Boundaries: 1, 2, 3, 4, 5, 6, 7, 8, 9, 10, 11, 12, 13, 14, 15, 16, 17, 18, 19, 20, 21, 22, 23, 24, 25, 26, 27, 28, 29, 30, 31, 32, 33, 34, 35, 36, 37, 38, 39
- USACE Boundaries: 1, 2, 3, 4, 5, 6, 7, 8, 9, 10, 11, 12, 13, 14, 15, 16, 17, 18, 19, 20, 21, 22, 23, 24, 25, 26, 27, 28, 29, 30, 31, 32, 33, 34, 35, 36, 37, 38, 39

Designed By:	Hydro Software v3.82	Survey Date:	09 Mar 2016	Production Date:	11 Mar 2016
Reviewed By:	Absolute Scale	Project Reference Number:	130300	Project Reference Number:	130300
Scale:	1 inch = 250 feet	Scale:	[Condition]	Scale:	[Condition]
Projection:	NAD 1983 StatePlane South Carolina FIPS 3900 Feet	Projection:	NAD 1983 StatePlane South Carolina FIPS 3900 Feet	Projection:	NAD 1983 StatePlane South Carolina FIPS 3900 Feet

Charleston Lower Harbor Channel
The information depicted on this map represents the results of surveys made on the dates indicated and is not intended to be used for general navigation purposes. The user is advised to verify the accuracy of the data shown on this chart before using it for any purpose. The user is also advised to verify the accuracy of the data shown on this chart before using it for any purpose. The user is also advised to verify the accuracy of the data shown on this chart before using it for any purpose.

Concluded on: 09 Mar 2016
Charleston, South Carolina