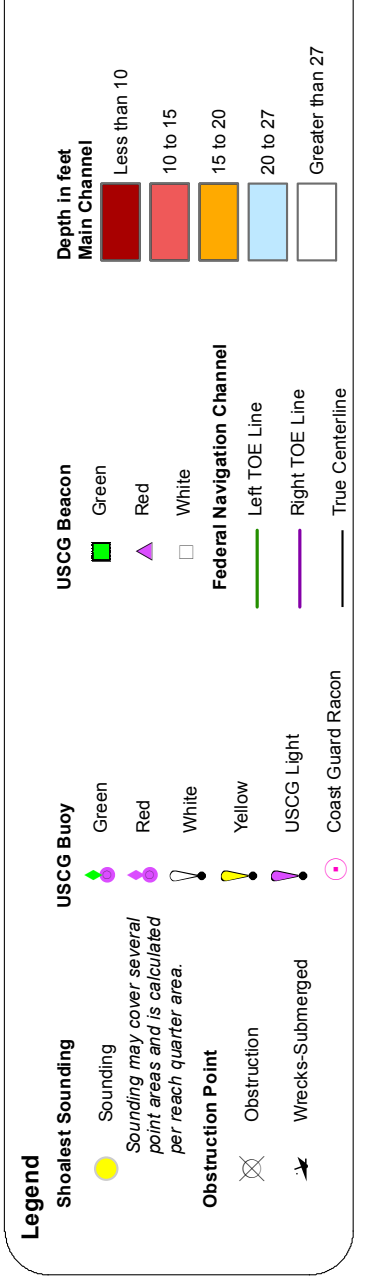
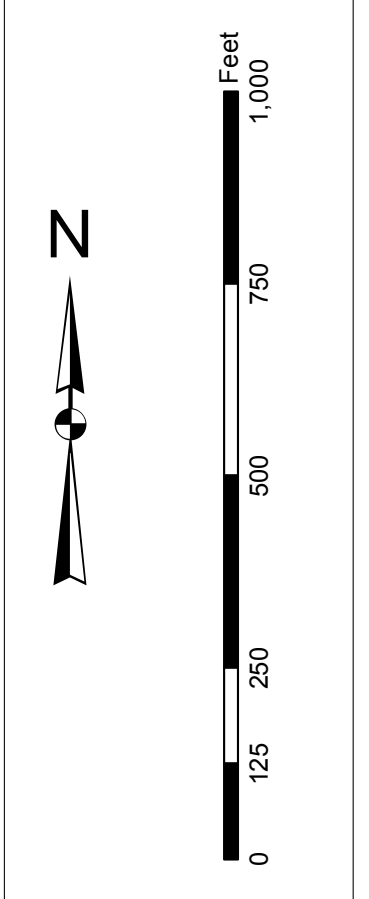
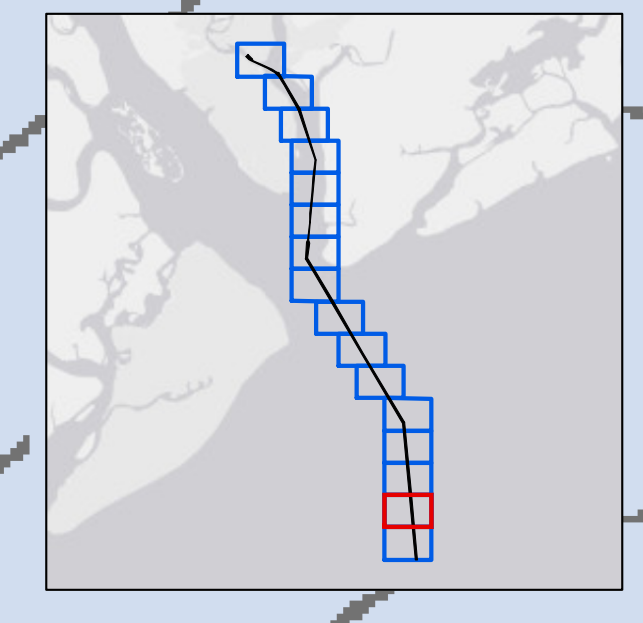
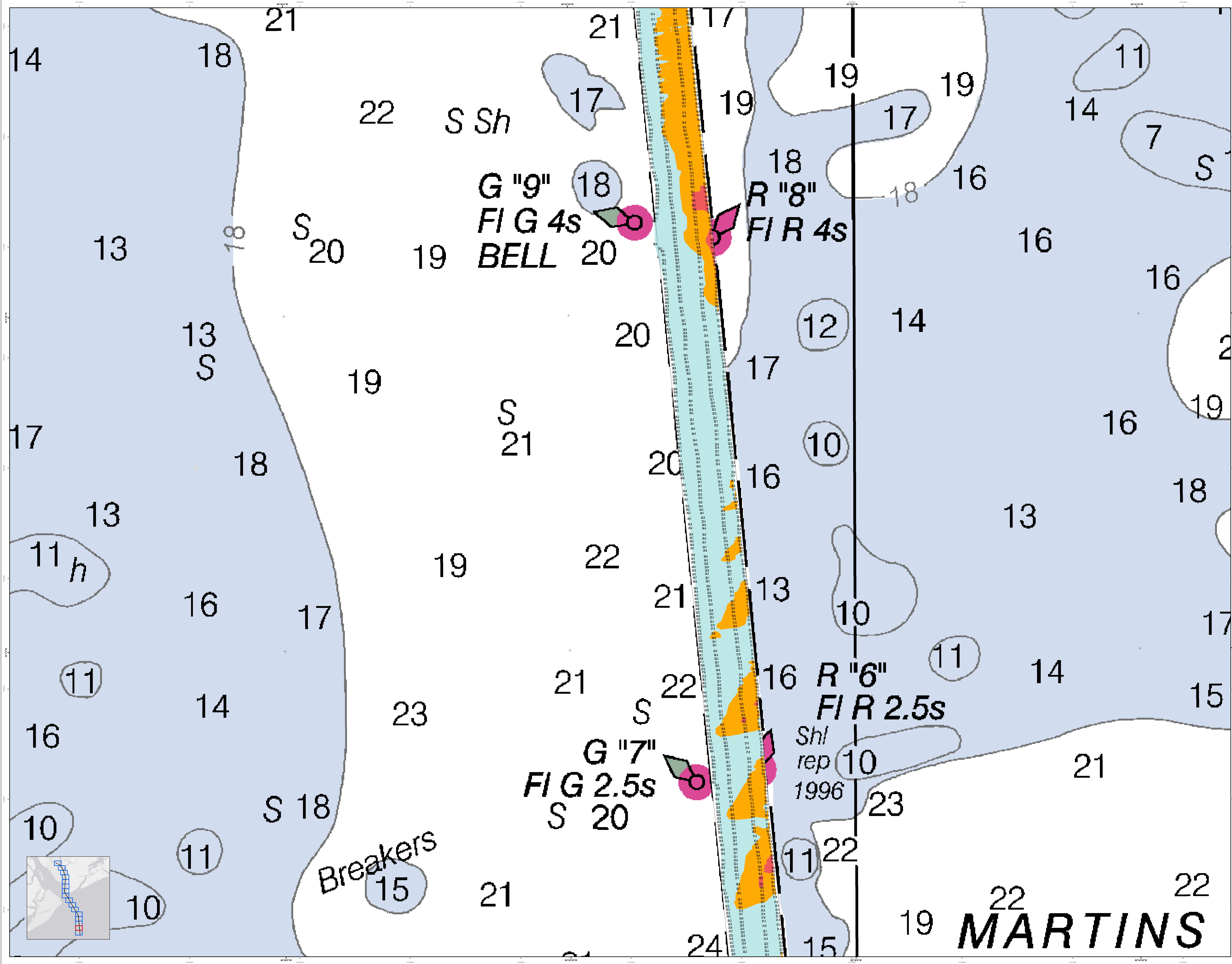


Port Royal Harbor Channel Survey
The information depicted on this map represents the results of surveys made on the dates indicated and can only be considered as indicating the general location of obstructions. It is not intended to be used for navigation.



Designed by:	Hydro Software v3.6.1	Design Date:	20 Nov 2014	Creation Date:	20 Nov 2014
Reviewed by:	Absolute scale	Project Reference Number:	13000	Project Reference Number:	13000
Scale:	1 inch = 250 feet	Survey Type:	Single-beam and dual-beam	Survey Type:	Single-beam and dual-beam
Projection:	NAD 1983 StatePlane South Carolina FIPS 3200 Feet	Projection:	NAD 1983 StatePlane South Carolina FIPS 3200 Feet	Projection:	NAD 1983 StatePlane South Carolina FIPS 3200 Feet

U.S. ARMY CORPS OF ENGINEERS
CHARLESTON DISTRICT
CHARLESTON, SOUTH CAROLINA
SAYLOR BAY BRANCH
WATERWAY DIVISION
CHARLESTON, SC 29405
CESAC-GIS/USAGE-ARMY MIL



U.S. Army Corps of Engineers
Charleston District

Port Royal Harbor Channel Survey
The information depicted on this map represents the results of surveys made on the dates indicated and can only be considered as indicating the general location of the survey area. It is not intended for navigation.
Concluded on: 13 November 2014
Port Royal, South Carolina

Legend

- Soundings: 10, 11, 12, 13, 14, 15, 16, 17, 18, 19, 20, 21, 22, 23, 24
- Breakers: Breakers
- Navigational Aids: G '9', R '8', G '7', R '6'
- Shl rep 1996

Scale
1 inch = 250 feet

Projection
NAD 1983 StatePlane South Carolina FIPS 3600 Feet

Design Date: 20 Nov 2014
Creation Date: 20 Nov 2014
Project Reference Number: 13000
Survey Type: Single-beam and multi-beam
Reference Date: 13 Nov 2014
Projection: NAD 1983 StatePlane South Carolina FIPS 3600 Feet

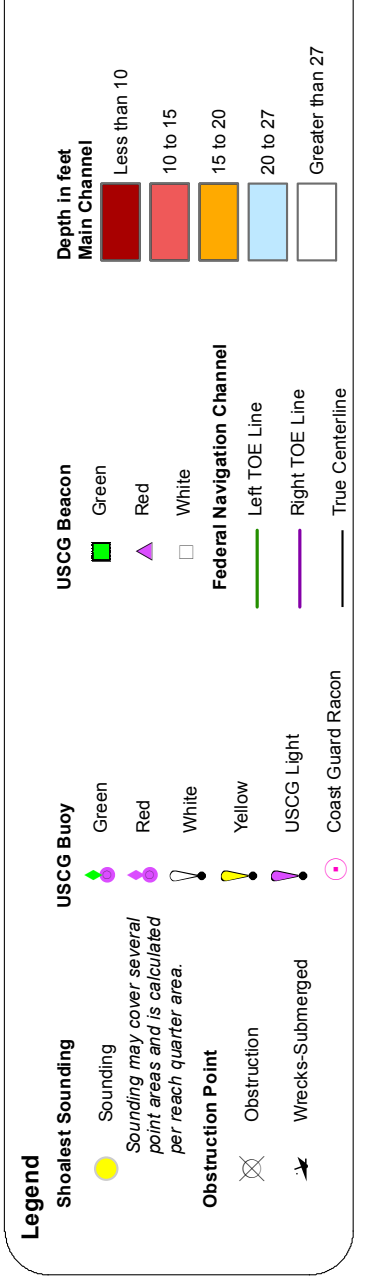
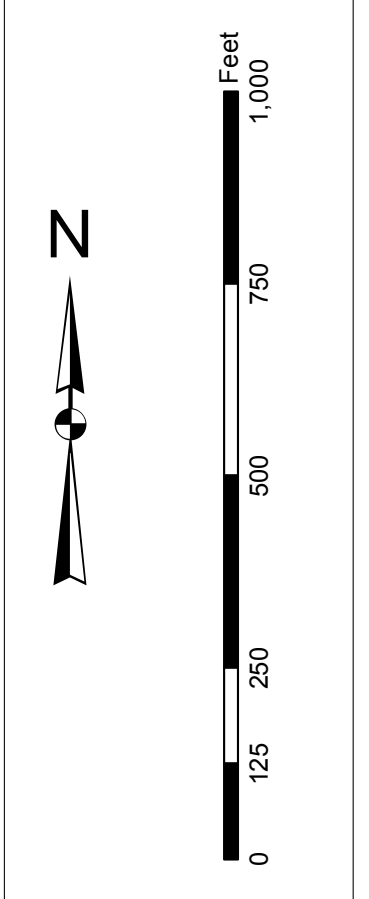
Designed by: Hydro Software v3.6.1
Reviewed by: 13000
Reference Date: 13 Nov 2014
Projection: NAD 1983 StatePlane South Carolina FIPS 3600 Feet

U.S. Army Corps of Engineers
CHARLESTON DISTRICT
CORPS OF ENGINEERS
CHARLESTON, SOUTH CAROLINA
SAYLOR BAY BRANCH
800 HARGRAVE AVE
CHARLESTON, SC 29405
CESAC-GIS@USACE.ARMY.MIL

SHEET REFERENCE NUMBER
C012
SHEET 2 OF 16

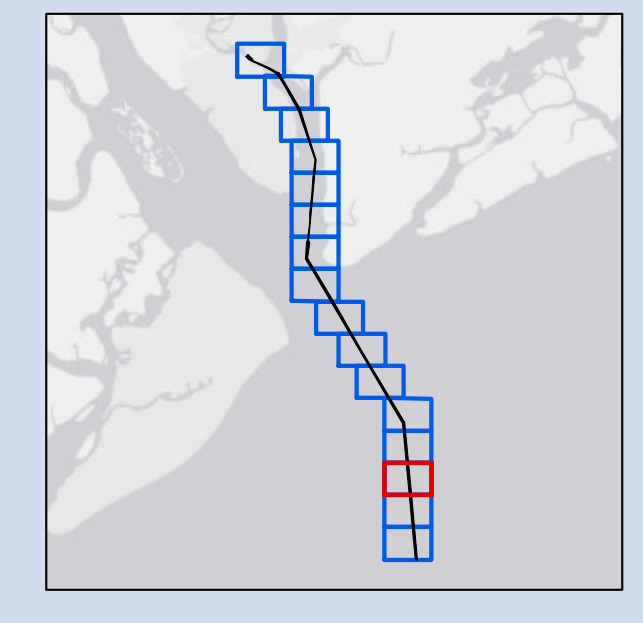
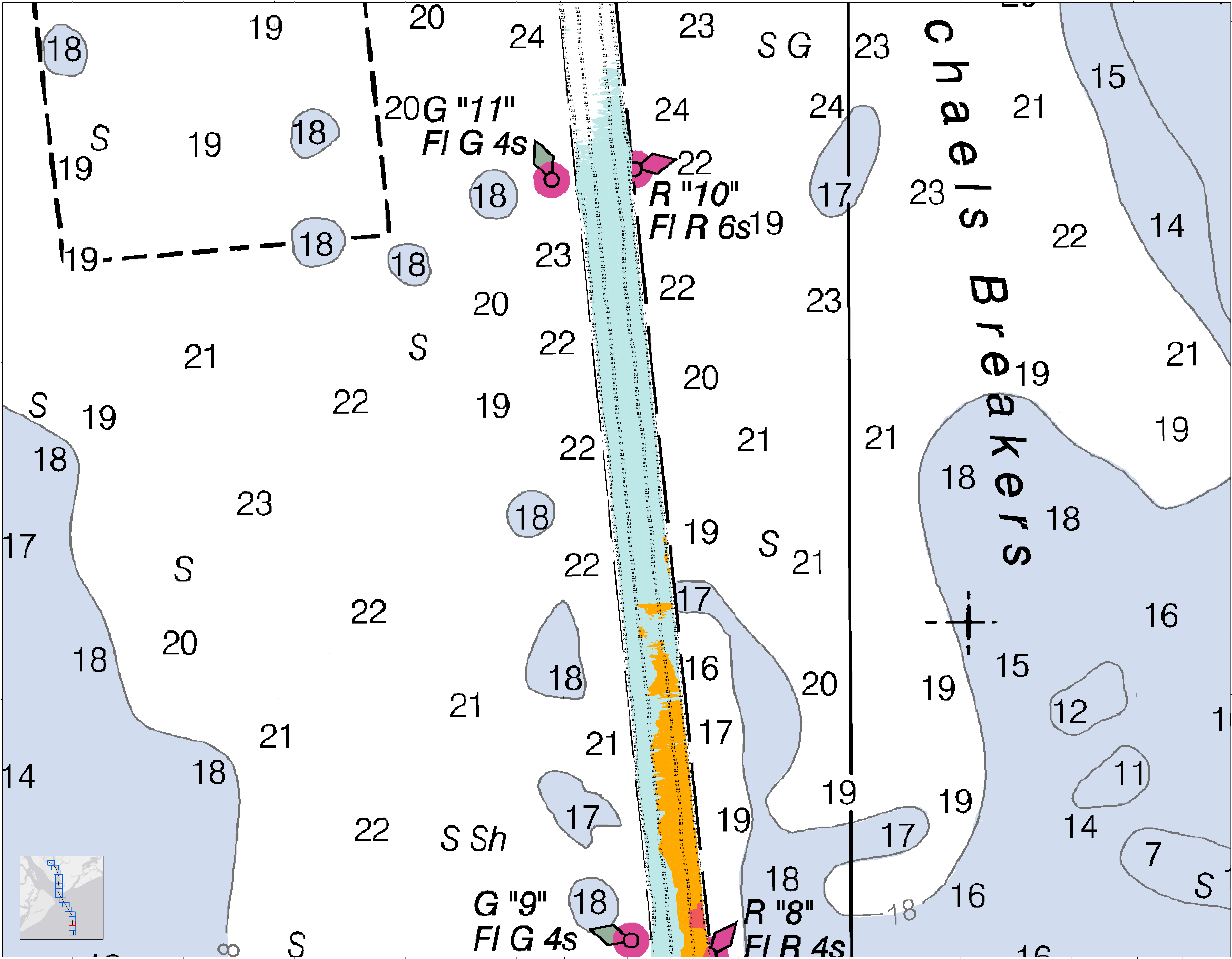
In the event that the U.S. Army Corps of Engineers, Charleston District Office, Special Operations is made to be subject, the Corps will not be held responsible for any damage or injury to property or persons. There are no warranties or representations made by the Corps. The Corps is not responsible for any damage or injury to property or persons. The Corps is not responsible for any damage or injury to property or persons. The Corps is not responsible for any damage or injury to property or persons.

Procedures:
1. The map is for informational purposes only.
2. The map is not to be used for navigation.
3. The map is not to be used for navigation.
4. The map is not to be used for navigation.
5. The map is not to be used for navigation.



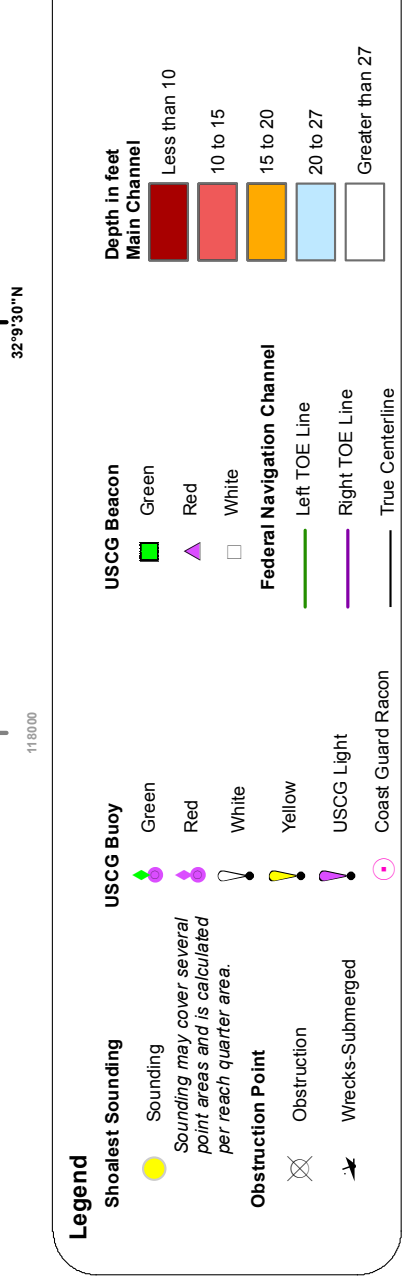
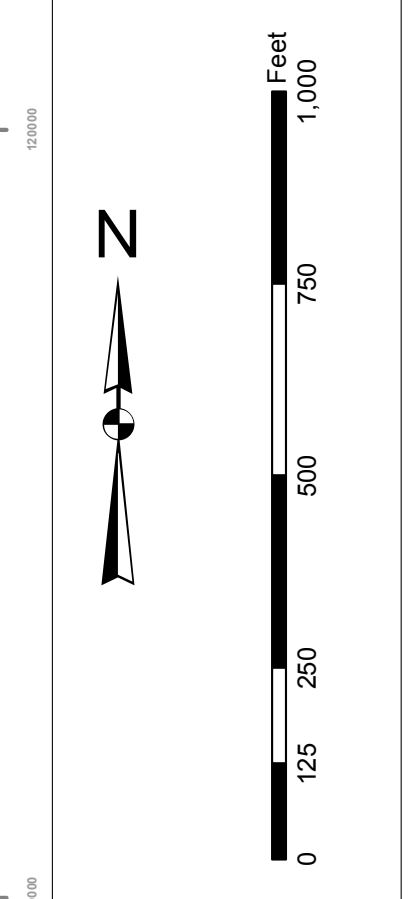
Designed by:	U.S. Army Corps of Engineers, Charleston District Office
Reviewed by:	U.S. Army Corps of Engineers, Charleston District Office
Scale:	1 inch = 250 feet
Projection:	NAD 1983 StatePlane South Carolina FIPS 3200 Feet
Design Date:	20 Nov 2014
Creation Date:	20 Nov 2014
Project Reference Number:	13-000
Survey Type:	Single-beam and multi-beam
Survey Date:	13 Nov 2014
Location:	Port Royal, South Carolina

Port Royal Harbor Channel Survey
The information depicted on this map represents the results of surveys made on the dates indicated and can only be considered as indicating the general location of the channel. It is not to be used for navigation.
Concluded on: 13 November 2014
Port Royal, South Carolina



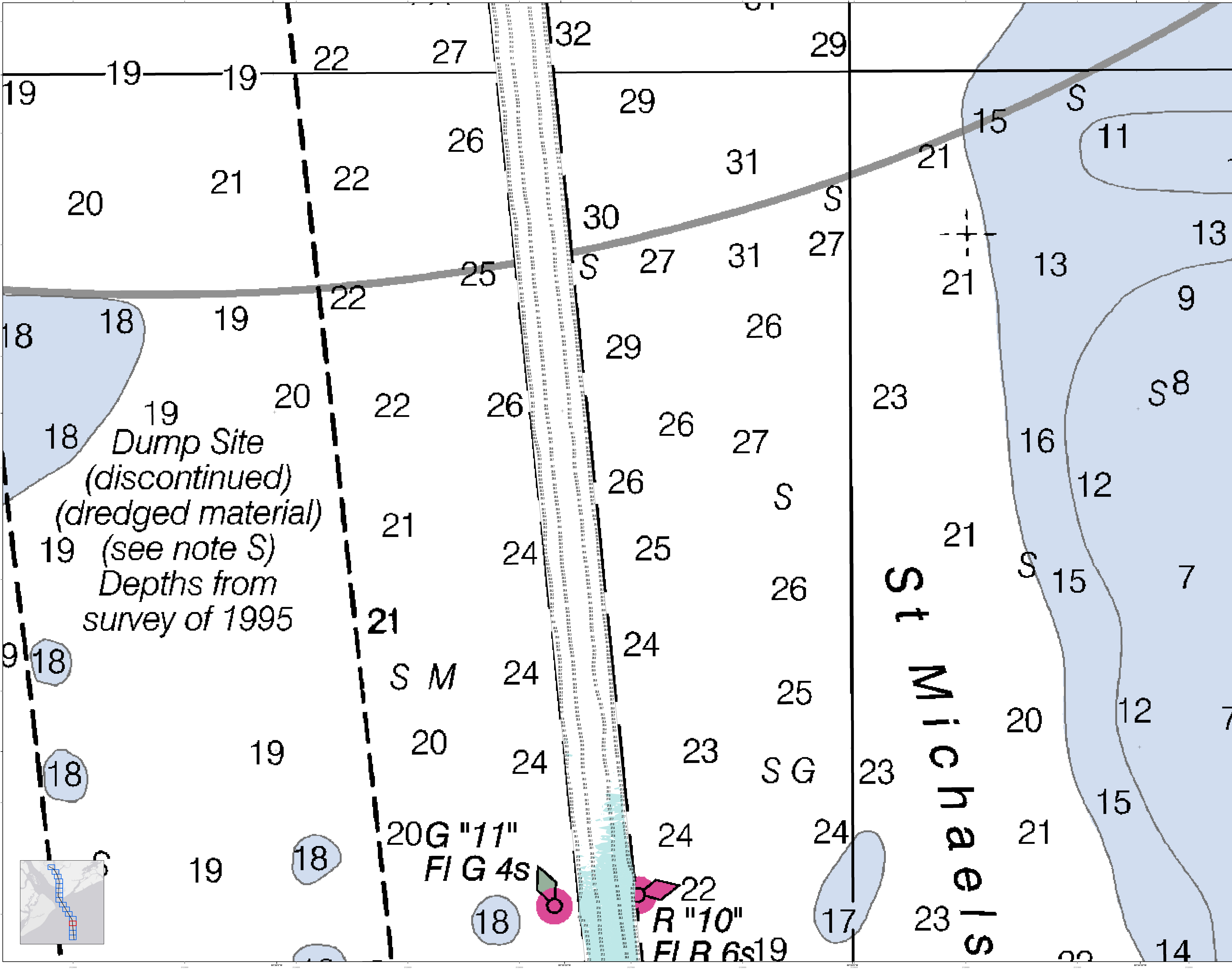
In the event that the U.S. Army Corps of Engineers, Charleston District Office, Special District Office, or District Office, is unable to provide the information requested, the user should contact the District Office, Charleston District Office, 1000 North Main Street, Charleston, SC 29403. There are no warranties or representations made by the U.S. Army Corps of Engineers, Charleston District Office, or District Office, in providing this information. The user assumes all liability for any use of this information. The user is advised to consult the District Office, Charleston District Office, for more information. All rights are reserved. No part of this publication may be reproduced, stored in a retrieval system, or transmitted, in any form or by any means, electronic, mechanical, photocopying, recording, or by any information storage and retrieval system, without the prior written permission of the U.S. Army Corps of Engineers, Charleston District Office.

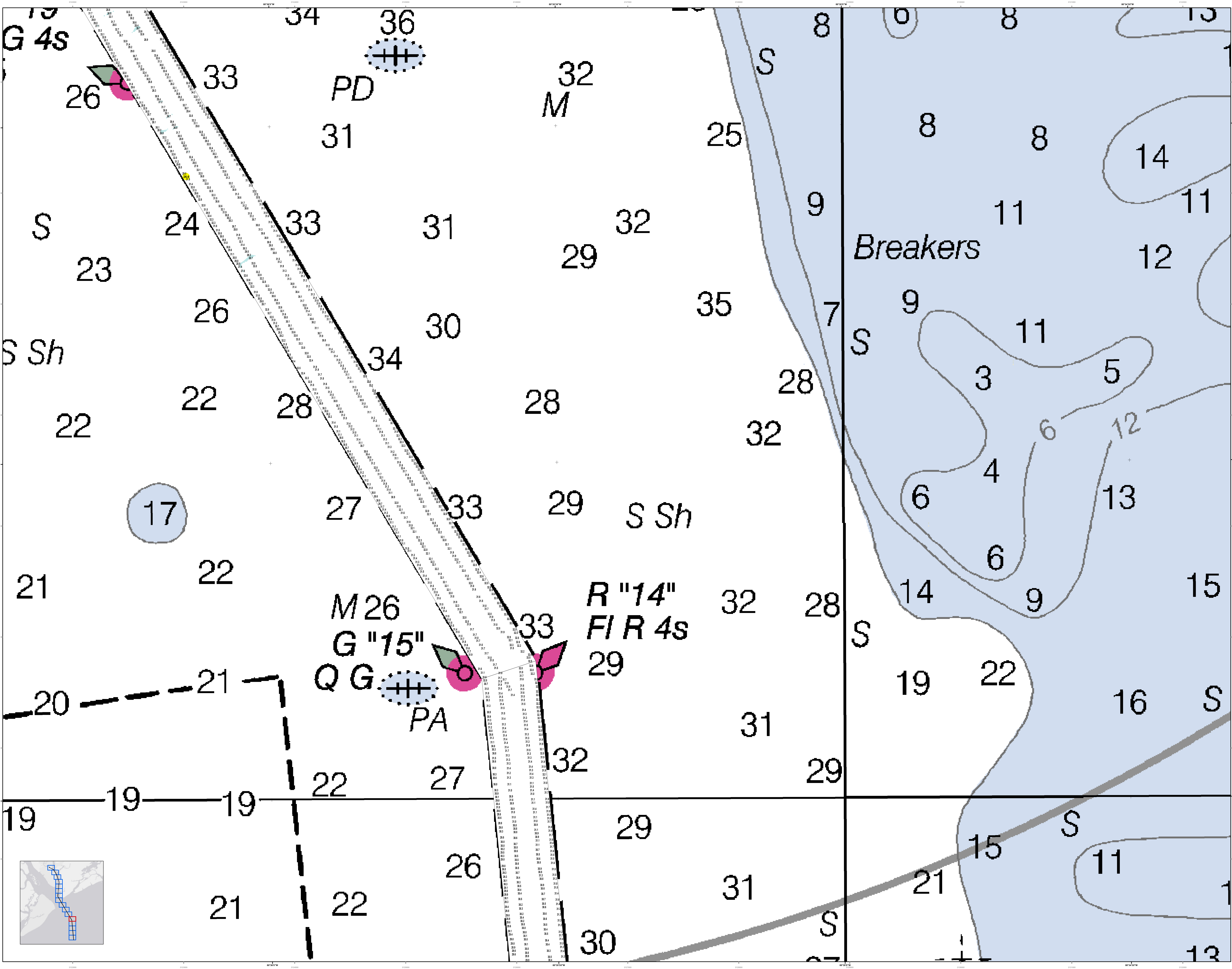
Provisional Notes:
1. This map is a preliminary survey.
2. The map is not to be used for navigation.
3. Soundings are in feet and tenths.
4. All depths are from the datum shown on the map.
5. All depths are subject to change.
6. All depths are subject to error.
7. All depths are subject to change.
8. All depths are subject to error.



Designed by:	Hydro Software v3.6.1	Design Date:	20 Nov 2014	Creation Date:	20 Nov 2014
Reviewed by:	1:5000	Project Reference Number:	1000010	Project Reference Number:	1000010
Reference scale:	1 inch = 250 feet	Survey Type:	Single-beam and dual-beam	Survey Type:	Single-beam and dual-beam
Projection:	NAD 1983 StatePlane South Carolina FIPS 3200 Feet	Projection:	NAD 1983 StatePlane South Carolina FIPS 3200 Feet	Projection:	NAD 1983 StatePlane South Carolina FIPS 3200 Feet

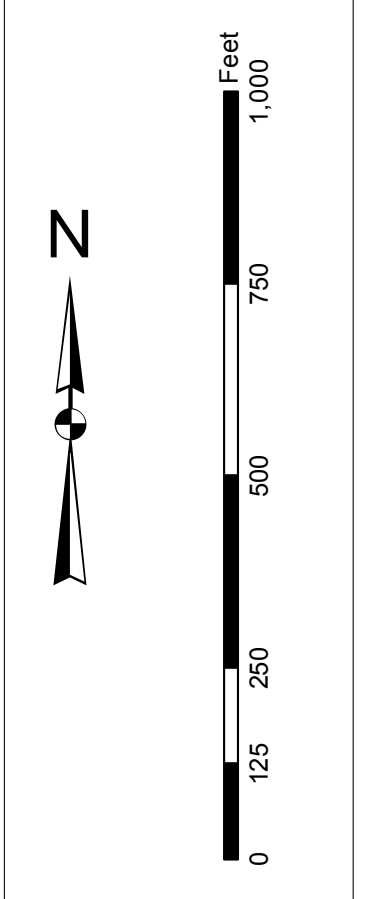
Port Royal Harbor Channel Survey
The information depicted on this map represents the results of surveys made on the dates indicated and can only be considered as indicating the general location of the channel. It is not to be used for navigation.
Concluded on: 13 November 2014
Port Royal, South Carolina





In accordance with the U.S. Army Corps of Engineers, Charleston District Office, Special Operations Manual, Section 10.1.1, the information depicted on this map represents the results of surveys made on the dates indicated and can only be considered as indicating the general location of the features shown. It is not intended to be used for navigation. All users are encouraged to use all prudent safety measures.

Production Notes:
1. This chart is a preliminary production.
2. All soundings are in feet and meters.
3. Soundings are 1 foot and meters.
4. All depths are based on Mean Low Water.
5. All depths are based on Mean Low Water.
6. All depths are based on Mean Low Water.
7. All depths are based on Mean Low Water.
8. All depths are based on Mean Low Water.
9. All depths are based on Mean Low Water.
10. All depths are based on Mean Low Water.



Legend

Soundings:
 1. 1 to 10 feet
 2. 11 to 20 feet
 3. 21 to 30 feet
 4. 31 to 40 feet
 5. 41 to 50 feet
 6. 51 to 60 feet
 7. 61 to 70 feet
 8. 71 to 80 feet
 9. 81 to 90 feet
 10. 91 to 100 feet
 11. 101 to 110 feet
 12. 111 to 120 feet
 13. 121 to 130 feet
 14. 131 to 140 feet
 15. 141 to 150 feet
 16. 151 to 160 feet
 17. 161 to 170 feet
 18. 171 to 180 feet
 19. 181 to 190 feet
 20. 191 to 200 feet
 21. 201 to 210 feet
 22. 211 to 220 feet
 23. 221 to 230 feet
 24. 231 to 240 feet
 25. 241 to 250 feet
 26. 251 to 260 feet
 27. 261 to 270 feet
 28. 271 to 280 feet
 29. 281 to 290 feet
 30. 291 to 300 feet
 31. 301 to 310 feet
 32. 311 to 320 feet
 33. 321 to 330 feet
 34. 331 to 340 feet
 35. 341 to 350 feet
 36. 351 to 360 feet
 37. 361 to 370 feet
 38. 371 to 380 feet
 39. 381 to 390 feet
 40. 391 to 400 feet
 41. 401 to 410 feet
 42. 411 to 420 feet
 43. 421 to 430 feet
 44. 431 to 440 feet
 45. 441 to 450 feet
 46. 451 to 460 feet
 47. 461 to 470 feet
 48. 471 to 480 feet
 49. 481 to 490 feet
 50. 491 to 500 feet

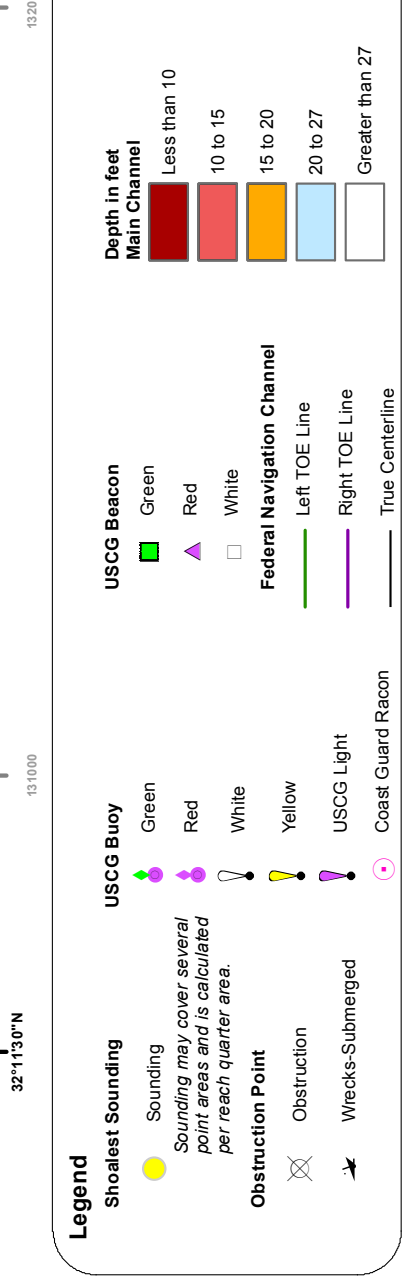
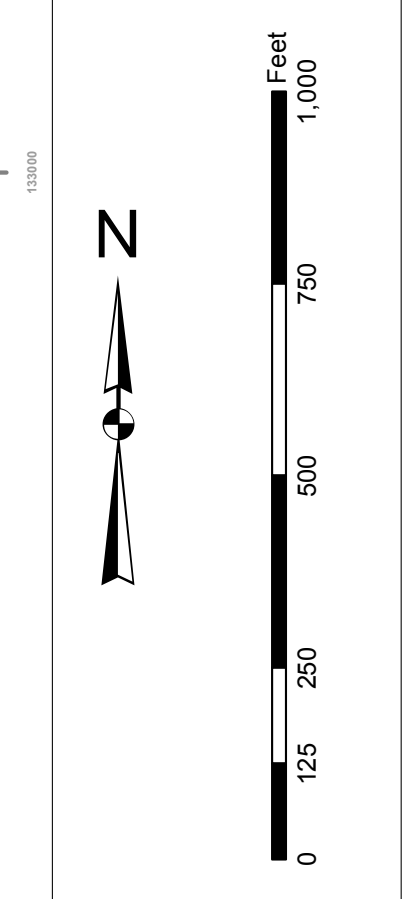
Other Symbols:
 - Breakers
 - Shoals (S Sh)
 - Obstructions
 - Navigational Aids (M, G, Q, R, F, PA)

Designed by:	Hydro Software v3.6.1	Design Date:	20 Nov 2014	Creation Date:	20 Nov 2014
Reviewed by:	1:5000	Project Reference Number:	1000010	Project Reference Number:	1000010
Scale:	1 inch = 250 feet	Survey Type:	Single-beam and multi-beam	Survey Type:	Single-beam and multi-beam
Projection:	NAD 1983 StatePlane South Carolina FIPS 3200 Feet	Projection:	NAD 1983 StatePlane South Carolina FIPS 3200 Feet	Projection:	NAD 1983 StatePlane South Carolina FIPS 3200 Feet

Port Royal Harbor Channel Survey
 The information depicted on this map represents the results of surveys made on the dates indicated and can only be considered as indicating the general location of the features shown. It is not intended to be used for navigation. All users are encouraged to use all prudent safety measures.
 Concluded on: 13 November 2014
 Port Royal, South Carolina

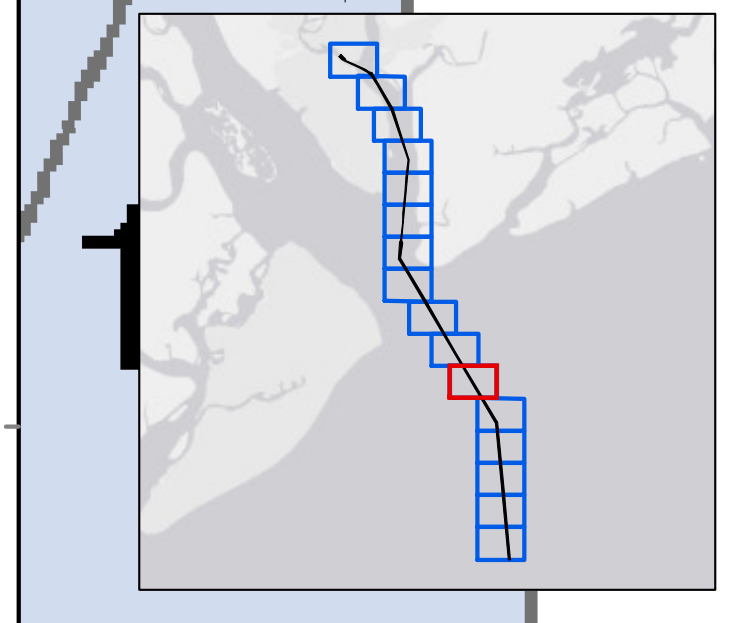
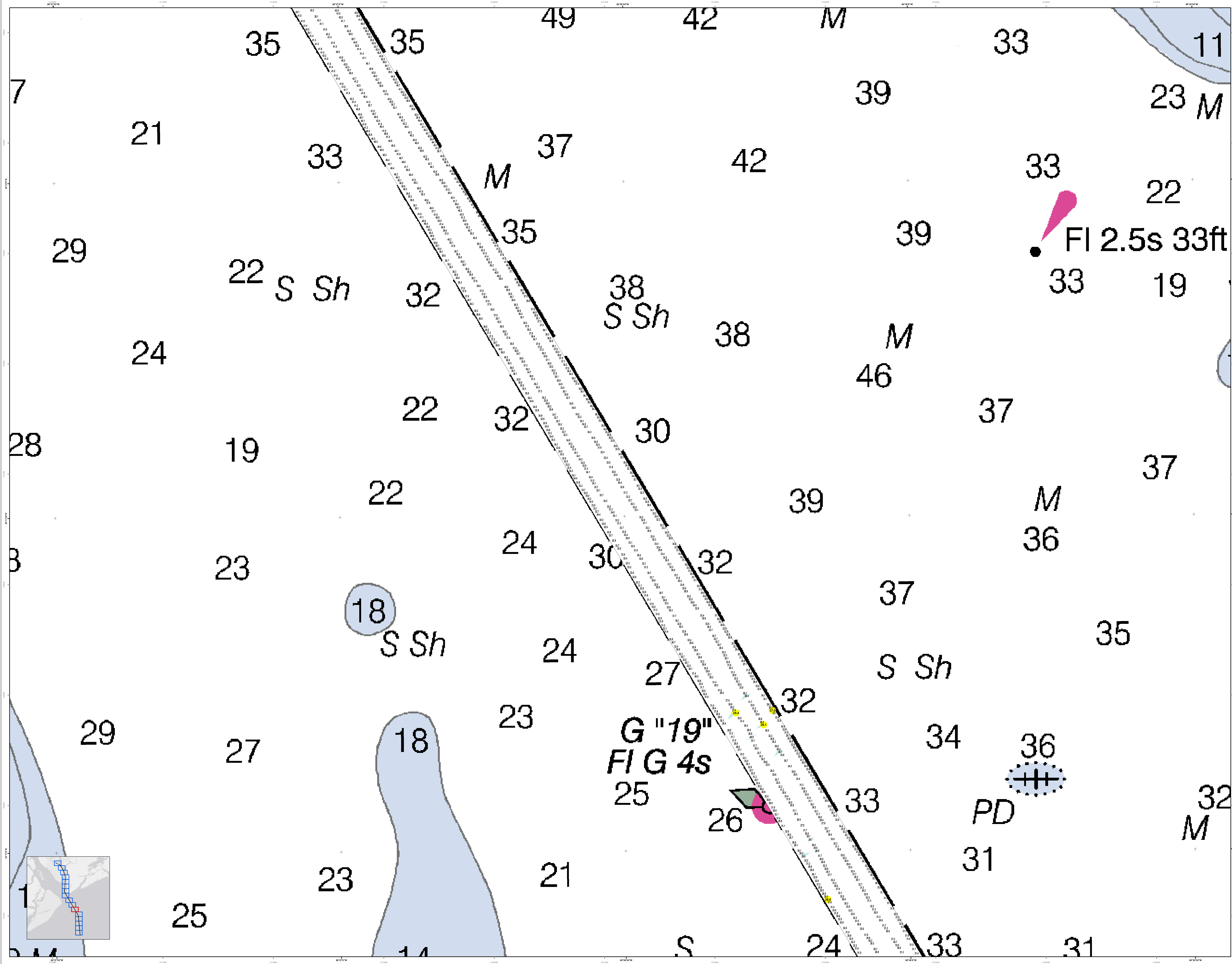
In the event that the U.S. Army Corps of Engineers, Charleston District Office, Special Data Search is made for project, contract, or other information, the user should refer to the project, contract, or other information for the most current information. There have been changes to the data since the last update. The user should refer to the project, contract, or other information for the most current information. The user should refer to the project, contract, or other information for the most current information. The user should refer to the project, contract, or other information for the most current information.

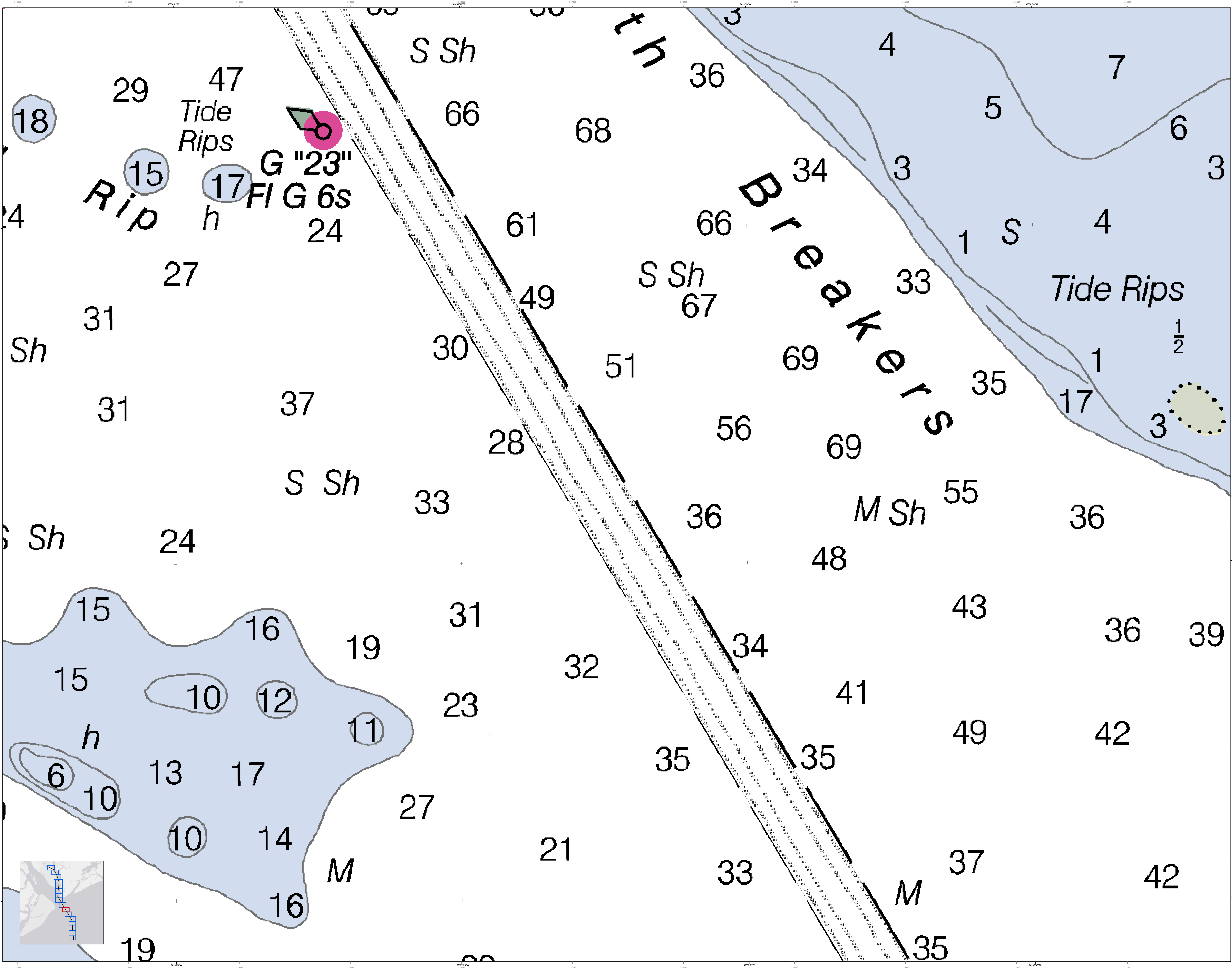
Projections:
1. NAD 83
2. UTM
3. StatePlane
4. UTM
5. UTM
6. UTM
7. UTM
8. UTM
9. UTM
10. UTM
11. UTM
12. UTM
13. UTM
14. UTM
15. UTM
16. UTM
17. UTM
18. UTM
19. UTM
20. UTM
21. UTM
22. UTM
23. UTM
24. UTM
25. UTM
26. UTM
27. UTM
28. UTM
29. UTM
30. UTM
31. UTM
32. UTM
33. UTM
34. UTM
35. UTM
36. UTM
37. UTM
38. UTM
39. UTM
40. UTM
41. UTM
42. UTM
43. UTM
44. UTM
45. UTM
46. UTM
47. UTM
48. UTM
49. UTM
50. UTM
51. UTM
52. UTM
53. UTM
54. UTM
55. UTM
56. UTM
57. UTM
58. UTM
59. UTM
60. UTM
61. UTM
62. UTM
63. UTM
64. UTM
65. UTM
66. UTM
67. UTM
68. UTM
69. UTM
70. UTM
71. UTM
72. UTM
73. UTM
74. UTM
75. UTM
76. UTM
77. UTM
78. UTM
79. UTM
80. UTM
81. UTM
82. UTM
83. UTM
84. UTM
85. UTM
86. UTM
87. UTM
88. UTM
89. UTM
90. UTM
91. UTM
92. UTM
93. UTM
94. UTM
95. UTM
96. UTM
97. UTM
98. UTM
99. UTM
100. UTM



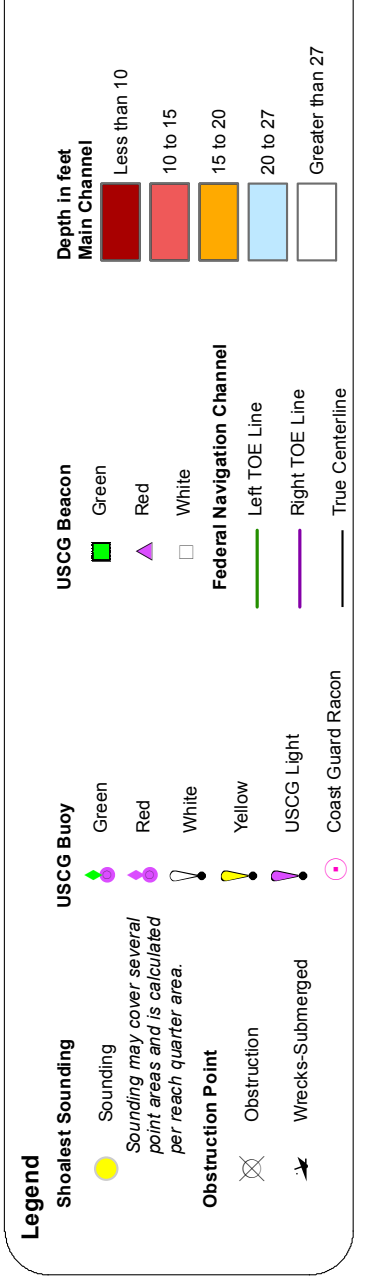
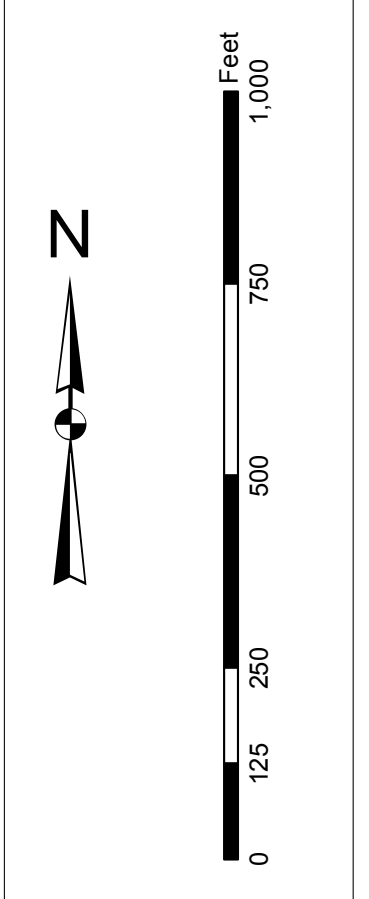
Designed by: Hydro Software v3.6.1	Design Date: 20 Nov 2014	Creation Date: 20 Nov 2014
Reviewed by: 1:5000	Project Reference Number: 10000000	Project Reference Number: 10000000
Reference scale: 1 inch = 250 feet	Survey Type: Single-beam and multi-beam	Survey Type: Single-beam and multi-beam
Projection: NAD 1983 StatePlane South Carolina FIPS 3600 Feet	Projection: NAD 1983 StatePlane South Carolina FIPS 3600 Feet	Projection: NAD 1983 StatePlane South Carolina FIPS 3600 Feet

Port Royal Harbor Channel Survey
The information depicted on this map represents the results of surveys made on the dates indicated and can only be considered as indicating the general location of the features shown. It is not intended to be used for navigation.
Concluded on: 13 November 2014
Port Royal, South Carolina





In the event that the U.S. Army Corps of Engineers, Charleston District Office, Special Data Branch is made to project, construct, install, maintain, or operate any navigational aid, the information on this chart is provided for informational purposes only. It is not intended to be used for navigation. There are no warranties, expressed or implied, made by the U.S. Army Corps of Engineers, Charleston District Office, Special Data Branch, for the accuracy, completeness, or timeliness of the information on this chart. The user assumes all responsibility for the use of this information. The information on this chart is provided for informational purposes only. It is not intended to be used for navigation. There are no warranties, expressed or implied, made by the U.S. Army Corps of Engineers, Charleston District Office, Special Data Branch, for the accuracy, completeness, or timeliness of the information on this chart. The user assumes all responsibility for the use of this information.

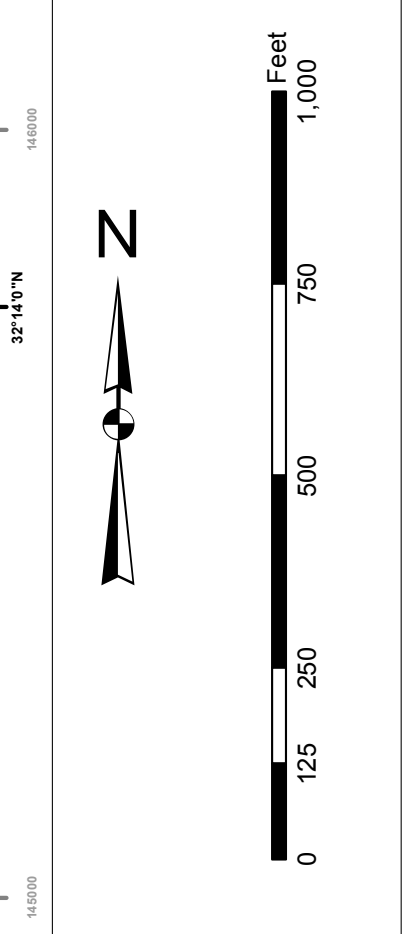


Designed by:	etHydro Software v3.6.1	Design Date:	20 Nov 2014
Reviewed by:	Absolute scale	Project Reference Number:	13000
Reference scale:	1 inch = 250 feet	Survey Type:	Single-beam and multi-beam
Projection:	NAD 1983 StatePlane South Carolina FIPS 3200 Feet	Coordinate System:	Coordinate System

Port Royal Harbor Channel Survey
The information depicted on this map represents the results of surveys made on the dates indicated and can only be considered as indicating the general location of the features shown.
Concluded on: **13 November 2014**
Port Royal, South Carolina

In the event that the U.S. Army Corps of Engineers, Charleston District Office, Special Data Branch is made to project, construct, install, maintain, or operate any structure, facility, or work, the contractor shall be responsible for obtaining all necessary permits and approvals from the appropriate agencies and authorities. The contractor shall be responsible for obtaining all necessary permits and approvals from the appropriate agencies and authorities. The contractor shall be responsible for obtaining all necessary permits and approvals from the appropriate agencies and authorities.

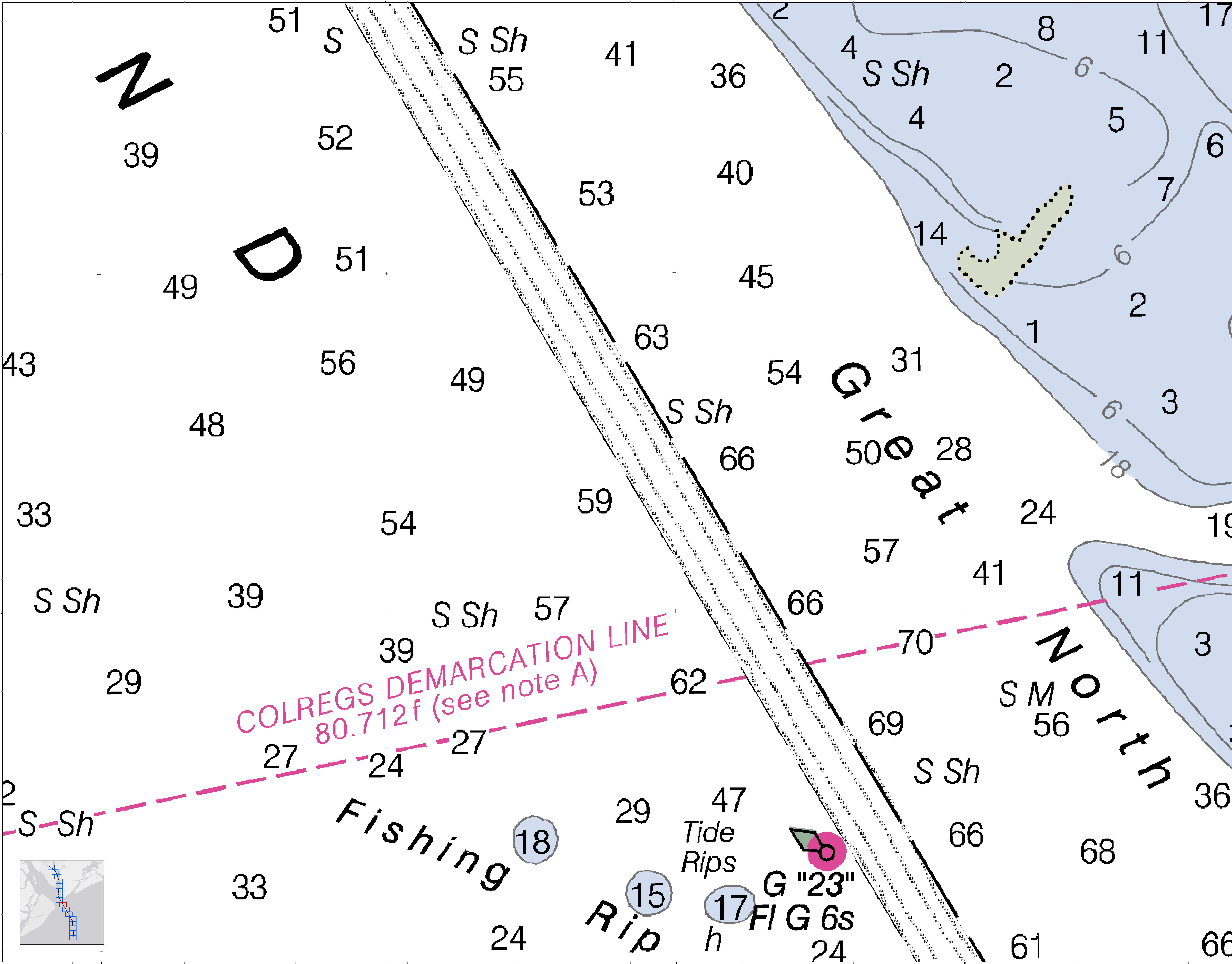
Projections:
1. North Carolina State Plane
2. State Plane
3. State Plane
4. State Plane
5. State Plane
6. State Plane
7. State Plane
8. State Plane
9. State Plane
10. State Plane
11. State Plane
12. State Plane
13. State Plane
14. State Plane
15. State Plane
16. State Plane
17. State Plane
18. State Plane
19. State Plane
20. State Plane
21. State Plane
22. State Plane
23. State Plane
24. State Plane
25. State Plane
26. State Plane
27. State Plane
28. State Plane
29. State Plane
30. State Plane
31. State Plane
32. State Plane
33. State Plane
34. State Plane
35. State Plane
36. State Plane
37. State Plane
38. State Plane
39. State Plane
40. State Plane
41. State Plane
42. State Plane
43. State Plane
44. State Plane
45. State Plane
46. State Plane
47. State Plane
48. State Plane
49. State Plane
50. State Plane
51. State Plane
52. State Plane
53. State Plane
54. State Plane
55. State Plane
56. State Plane
57. State Plane
58. State Plane
59. State Plane
60. State Plane
61. State Plane
62. State Plane
63. State Plane
64. State Plane
65. State Plane
66. State Plane
67. State Plane
68. State Plane
69. State Plane
70. State Plane
71. State Plane
72. State Plane
73. State Plane
74. State Plane
75. State Plane
76. State Plane
77. State Plane
78. State Plane
79. State Plane
80. State Plane
81. State Plane
82. State Plane
83. State Plane
84. State Plane
85. State Plane
86. State Plane
87. State Plane
88. State Plane
89. State Plane
90. State Plane
91. State Plane
92. State Plane
93. State Plane
94. State Plane
95. State Plane
96. State Plane
97. State Plane
98. State Plane
99. State Plane
100. State Plane



Symbol	Description
[Color swatches]	Color Swatches
[Line styles]	Line Styles
[Point symbols]	Point Symbols
[Text symbols]	Text Symbols
[Area symbols]	Area Symbols
[Boundary symbols]	Boundary Symbols
[Miscellaneous symbols]	Miscellaneous Symbols

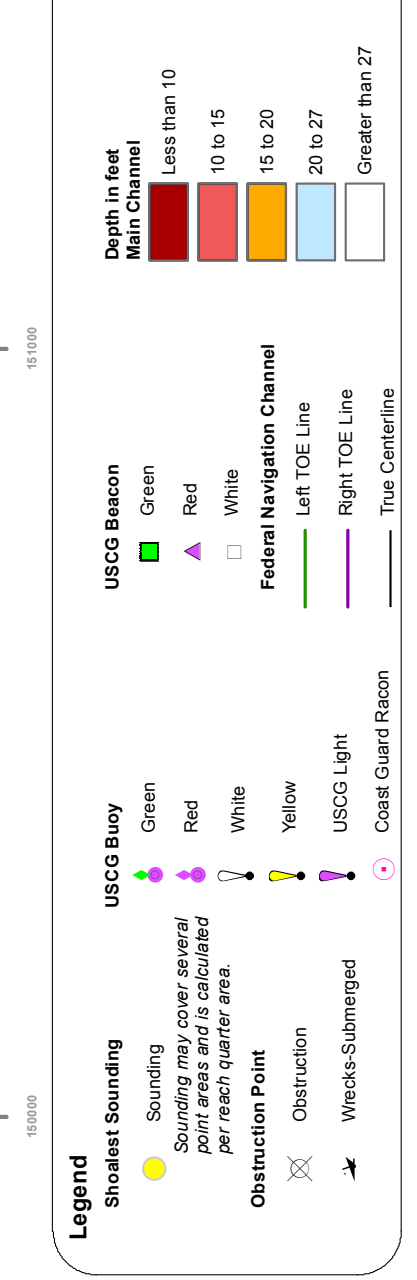
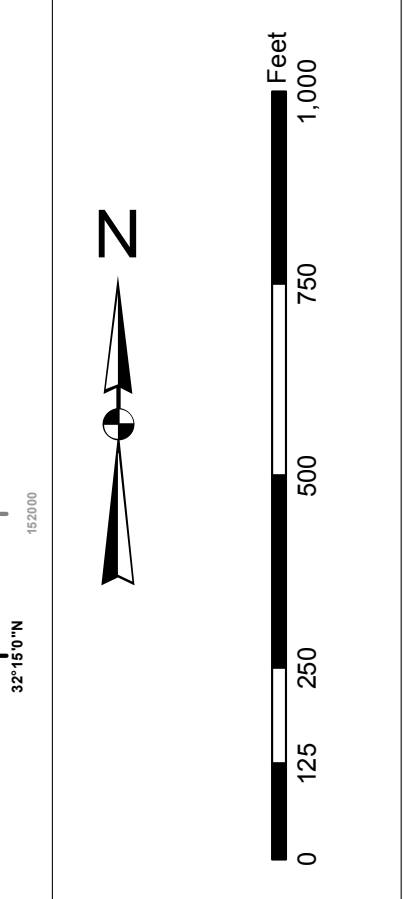
Designed by:	etHydro Software v3.6.1	Creation Date:	20 Nov 2014
Reviewed by:	Absolute scale	Project Reference Number:	13000
Reference scale:	1 inch = 250 feet	Survey Type:	Single-beam and Multi-beam
Projection:	NAD 1983 StatePlane South Carolina FIPS 3600 Feet	Coordinate System:	Coordinate System

Port Royal Harbor Channel Survey
The information depicted on this map represents the results of surveys made on the dates indicated and can only be considered as indicating the general location of the features shown. It is not intended to be used for navigation or other purposes.
Concluded on: 13 November 2014
Port Royal, South Carolina



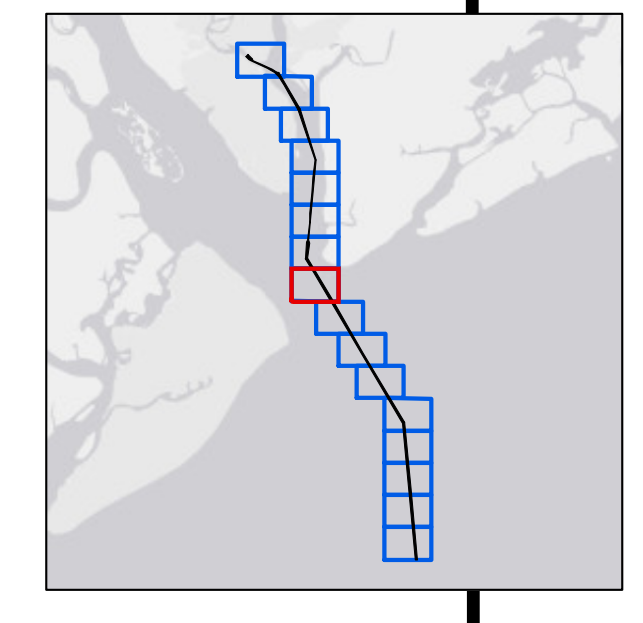
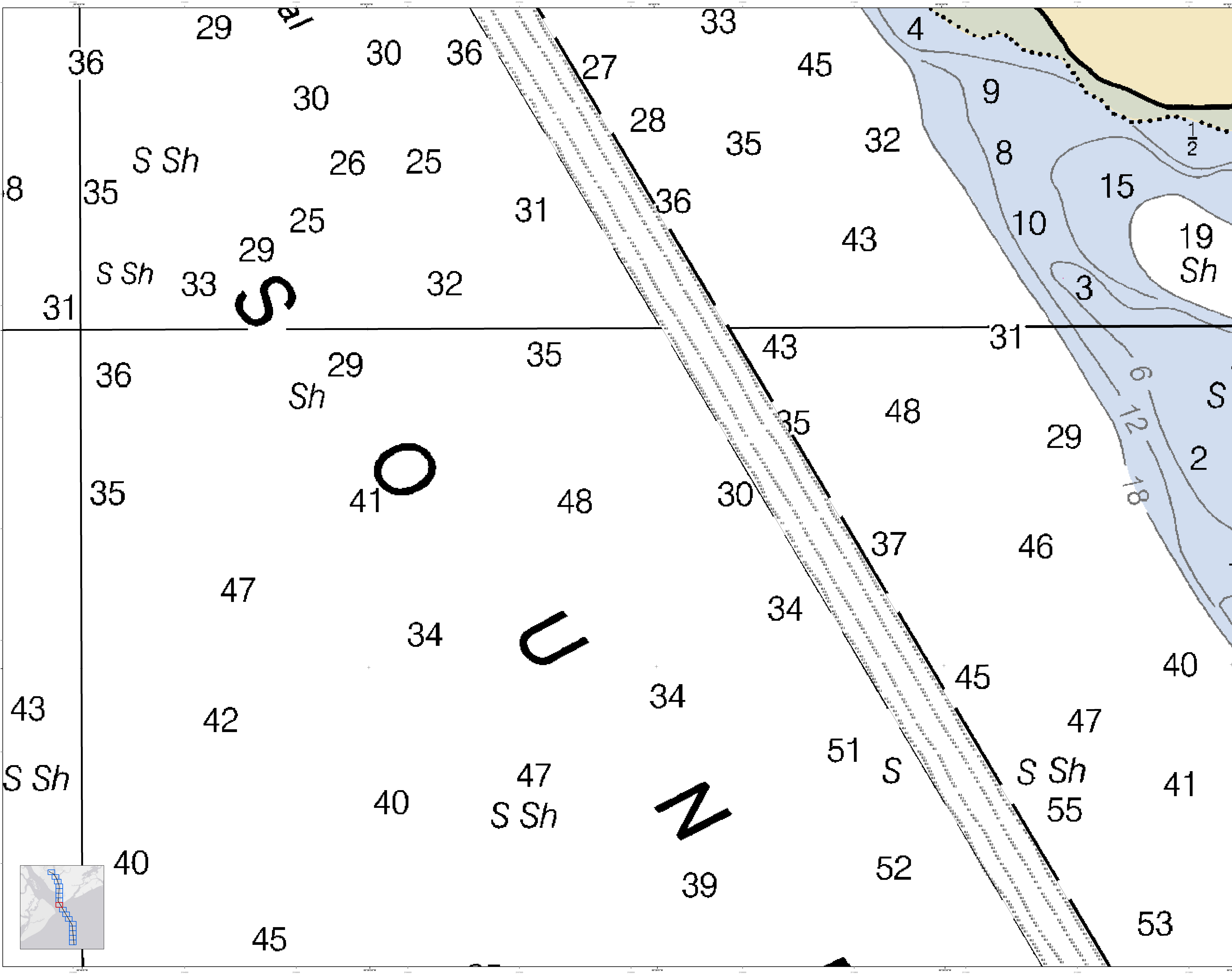
In the event that the U.S. Army Corps of Engineers, Charleston District Office, Special Data Branch is made to project, construct, install, maintain, or operate any structure, facility, or equipment, the user of this information is advised that the user assumes all liability for any and all damages, including but not limited to, personal injury, property damage, and economic loss, that may result from the use of this information. The user is also advised that the user is not to be held liable for any and all damages, including but not limited to, personal injury, property damage, and economic loss, that may result from the use of this information. The user is also advised that the user is not to be held liable for any and all damages, including but not limited to, personal injury, property damage, and economic loss, that may result from the use of this information.

Projections:
1. North Carolina State Plane
2. NAD 83
3. StatePlane
4. UTM
5. UTM
6. UTM
7. UTM
8. UTM
9. UTM
10. UTM
11. UTM
12. UTM
13. UTM
14. UTM
15. UTM
16. UTM
17. UTM
18. UTM
19. UTM
20. UTM
21. UTM
22. UTM
23. UTM
24. UTM
25. UTM
26. UTM
27. UTM
28. UTM
29. UTM
30. UTM
31. UTM
32. UTM
33. UTM
34. UTM
35. UTM
36. UTM
37. UTM
38. UTM
39. UTM
40. UTM
41. UTM
42. UTM
43. UTM
44. UTM
45. UTM
46. UTM
47. UTM
48. UTM
49. UTM
50. UTM
51. UTM
52. UTM
53. UTM
54. UTM
55. UTM
56. UTM
57. UTM
58. UTM
59. UTM
60. UTM
61. UTM
62. UTM
63. UTM
64. UTM
65. UTM
66. UTM
67. UTM
68. UTM
69. UTM
70. UTM
71. UTM
72. UTM
73. UTM
74. UTM
75. UTM
76. UTM
77. UTM
78. UTM
79. UTM
80. UTM
81. UTM
82. UTM
83. UTM
84. UTM
85. UTM
86. UTM
87. UTM
88. UTM
89. UTM
90. UTM
91. UTM
92. UTM
93. UTM
94. UTM
95. UTM
96. UTM
97. UTM
98. UTM
99. UTM
100. UTM



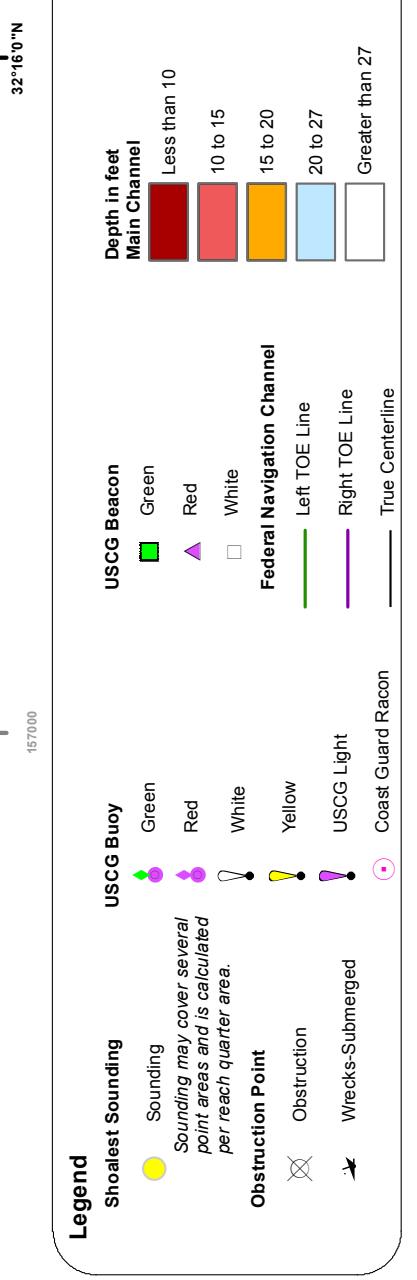
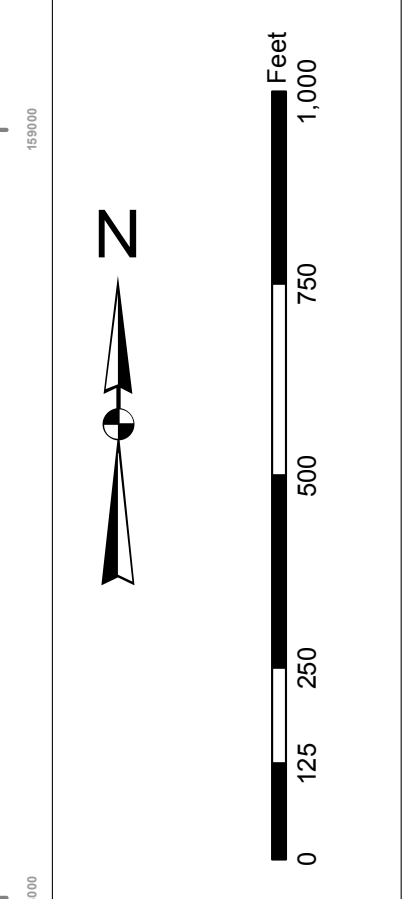
Designed by:	etHydro Software v3.6.1	Design Date:	20 Nov 2014
Reviewed by:	1:5000	Project Reference Number:	20140010
Reference scale:	1 inch = 250 feet	Survey Type:	Single-beam and Multi-beam
Projection:	NAD 1983 StatePlane South Carolina FIPS 3600 Feet	Coordinate System:	Coordinate System

Port Royal Harbor Channel Survey
The information depicted on this map represents the results of surveys made on the dates indicated and can only be considered as indicating the general location of the features shown. It is not to be used for navigation. Concluded on: 13 November 2014
Port Royal, South Carolina



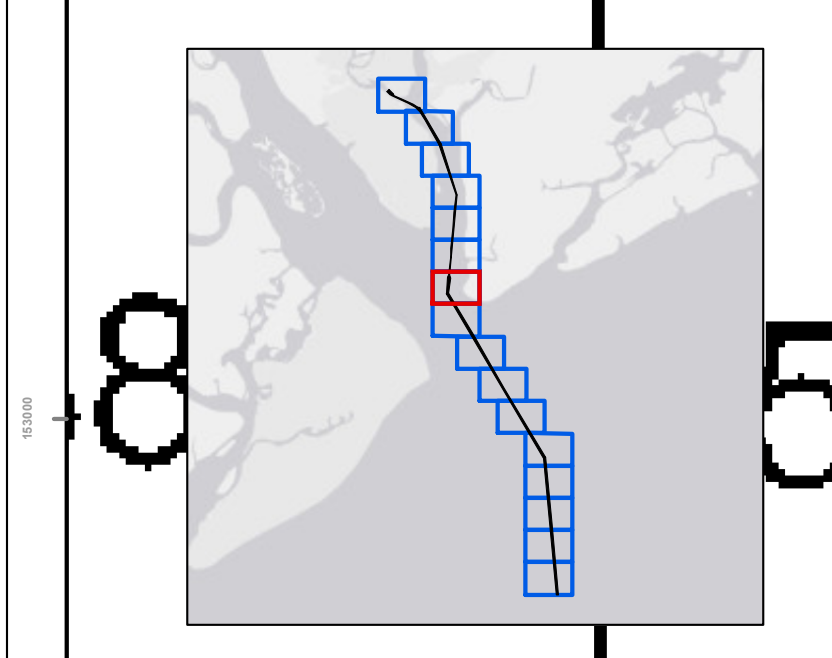
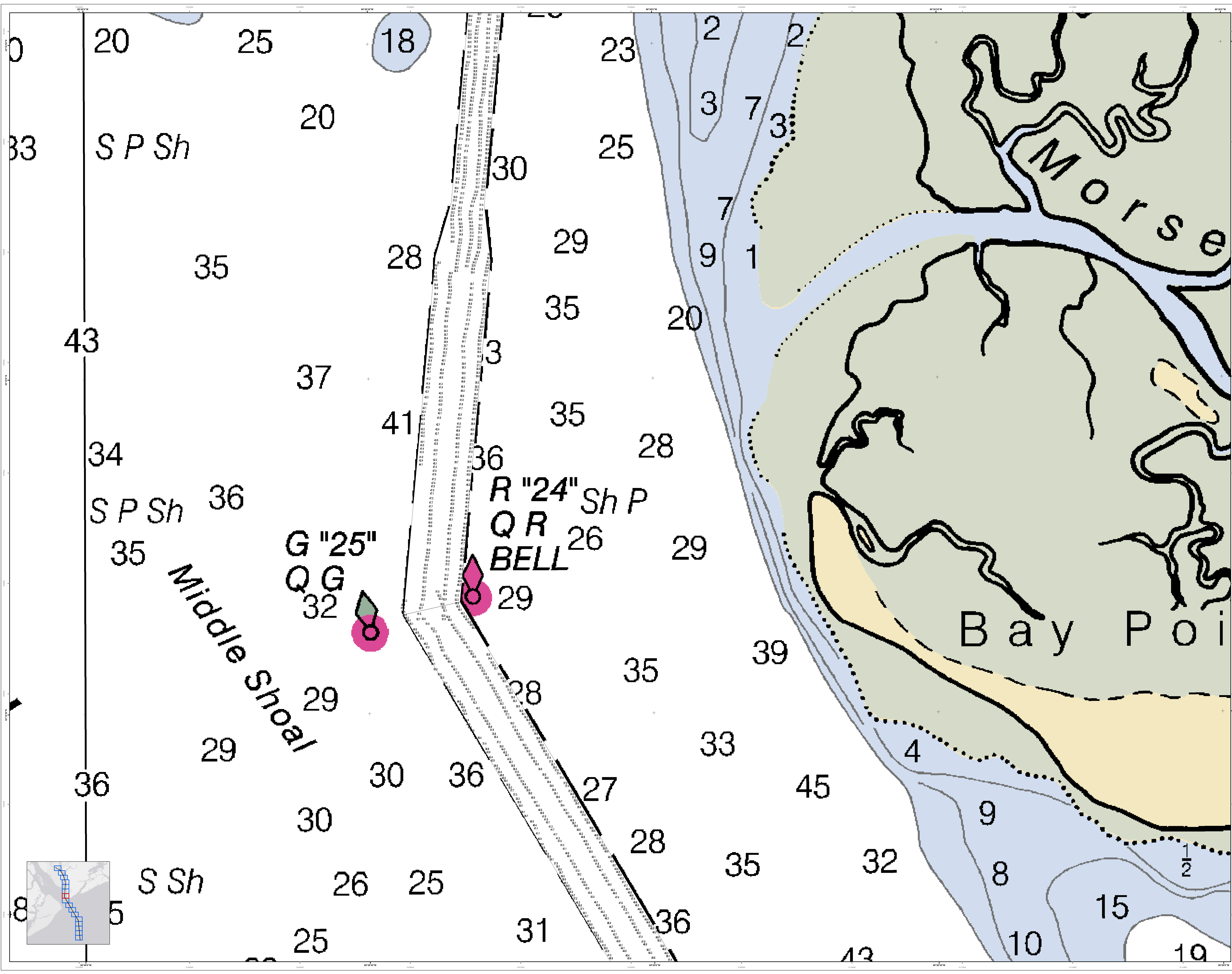
In the event that the U.S. Army Corps of Engineers, Charleston District Office, Special Data Branch is made to project, construct, install, maintain, operate, or remove any structure, facility, or work on the waterway, the user of this map is advised that the user is responsible for obtaining all necessary permits and approvals from the appropriate authorities. The user is also advised that the user is responsible for obtaining all necessary permits and approvals from the appropriate authorities. The user is also advised that the user is responsible for obtaining all necessary permits and approvals from the appropriate authorities.

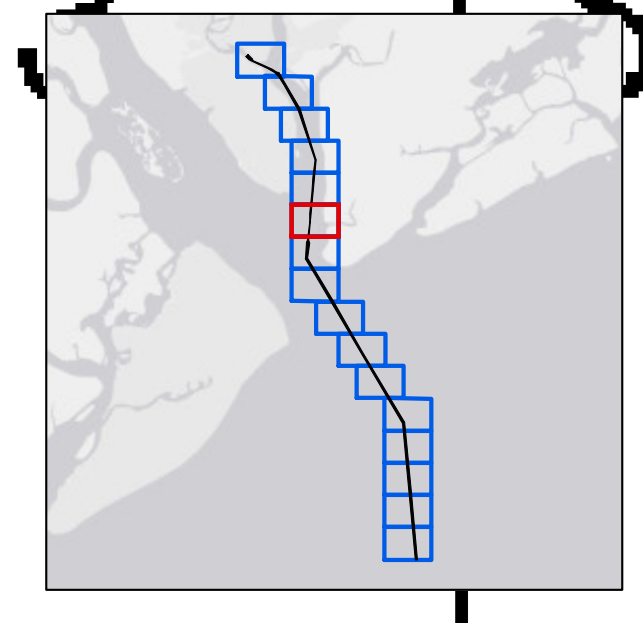
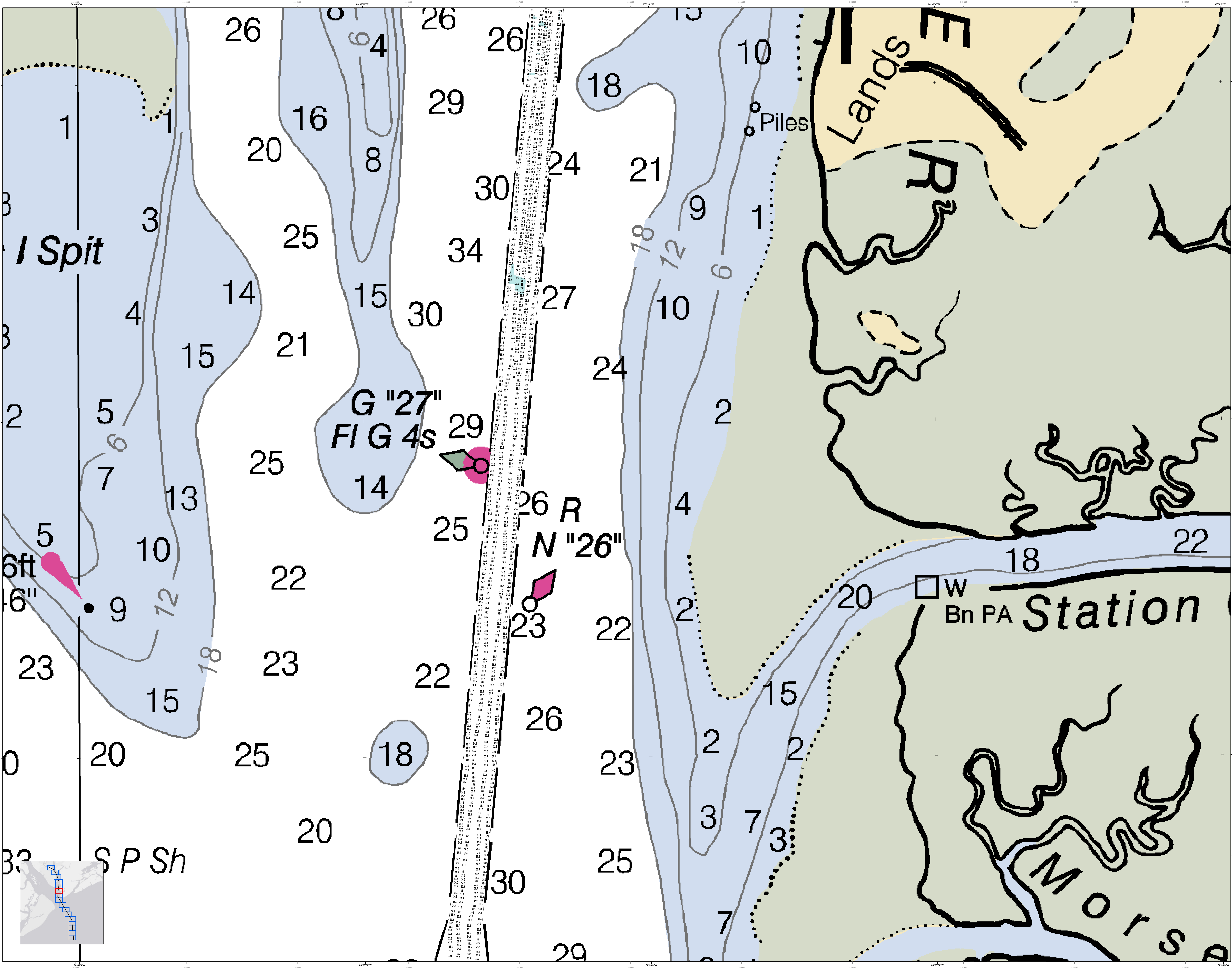
Projections:
1. North Carolina State Plane
2. NAD 83
3. State Plane
4. UTM
5. UTM
6. UTM
7. UTM
8. UTM
9. UTM
10. UTM
11. UTM
12. UTM
13. UTM
14. UTM
15. UTM
16. UTM
17. UTM
18. UTM
19. UTM
20. UTM
21. UTM
22. UTM
23. UTM
24. UTM
25. UTM
26. UTM
27. UTM
28. UTM
29. UTM
30. UTM
31. UTM
32. UTM
33. UTM
34. UTM
35. UTM
36. UTM
37. UTM
38. UTM
39. UTM
40. UTM
41. UTM
42. UTM
43. UTM
44. UTM
45. UTM
46. UTM
47. UTM
48. UTM
49. UTM
50. UTM



Designed by:	etHydro Software v3.6.1	Design Date:	20 Nov 2014
Reviewed by:	1:50,000	Project Reference Number:	20NOV2014
Reference scale:	1 inch = 250 feet	Survey Type:	Single-beam and multi-beam
Projection:	NAD 1983 StatePlane South Carolina FIPS 3600 Feet	Coordinate System:	Coordinate System

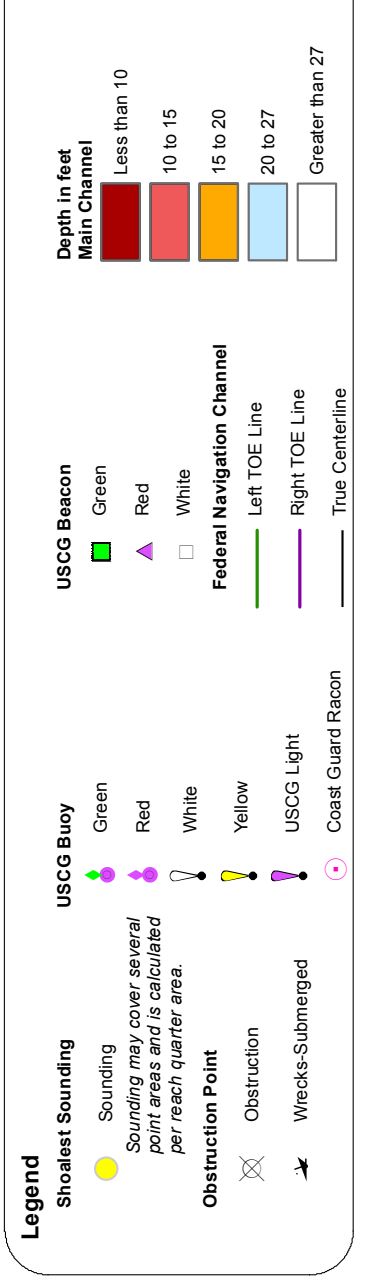
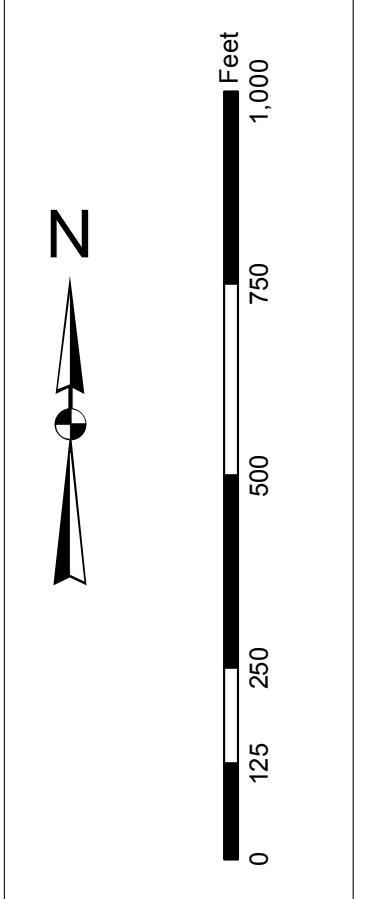
Port Royal Harbor Channel Survey
The information depicted on this map represents the results of surveys made on the dates indicated and can only be considered as indicating the general location of the structure. It is not intended to be used for navigation.
Concluded on: **13 November 2014**
Port Royal, South Carolina





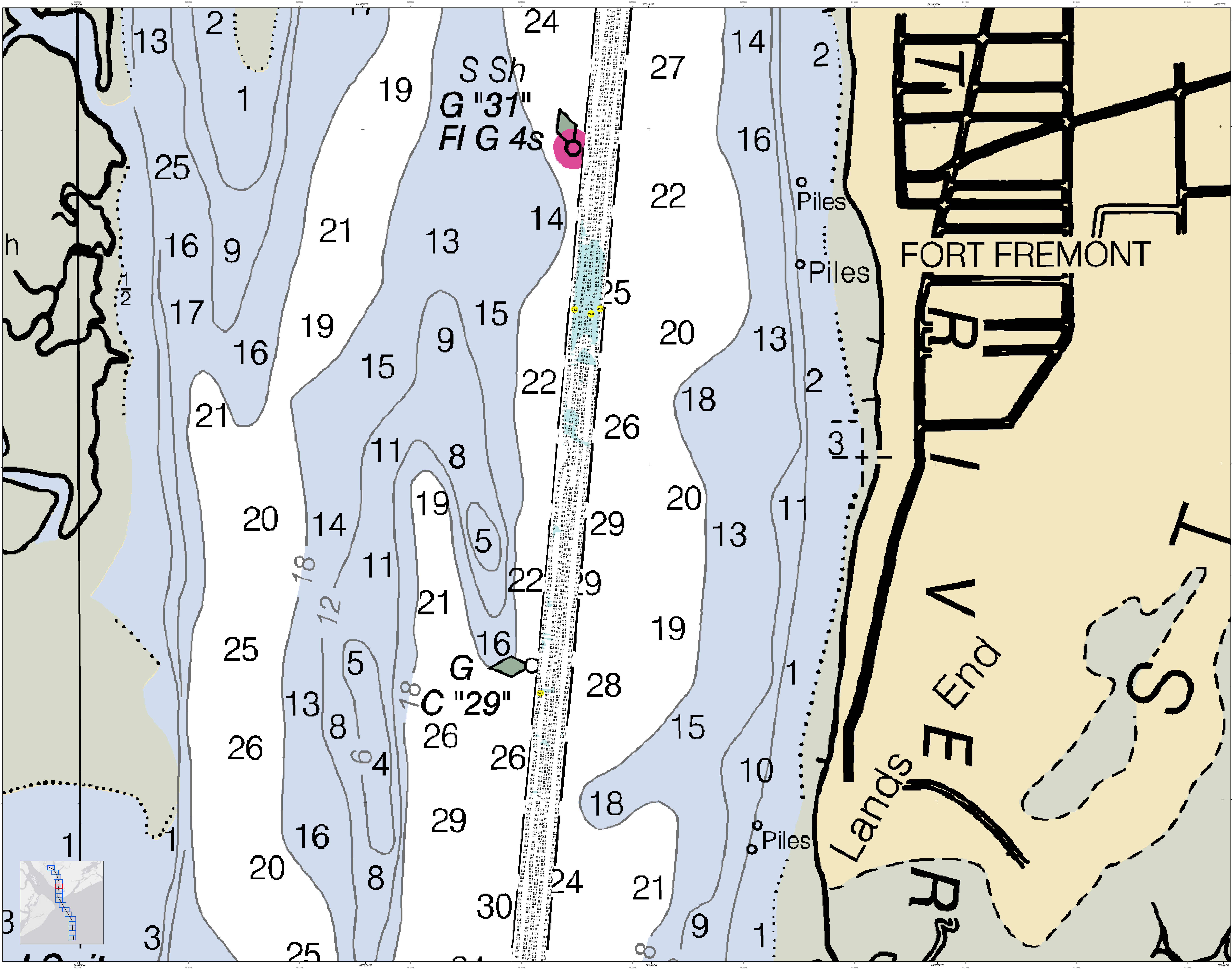
In the event that the U.S. Army Corps of Engineers, Charleston District Office, Special District Office, or other authorized personnel are unable to locate any of the information on this chart, the user should contact the appropriate office for assistance. This chart is not to be used for navigation purposes. The user is responsible for determining the accuracy of the information on this chart. The user is also responsible for determining the accuracy of the information on this chart. The user is also responsible for determining the accuracy of the information on this chart.

Projections:
1. North Pole
2. South Pole
3. Stereographic
4. Mercator
5. Lambert Conformal Conic
6. Transverse Mercator
7. Universal Transverse Mercator
8. UTM
9. State Plane
10. NAD 83
11. NAD 2011

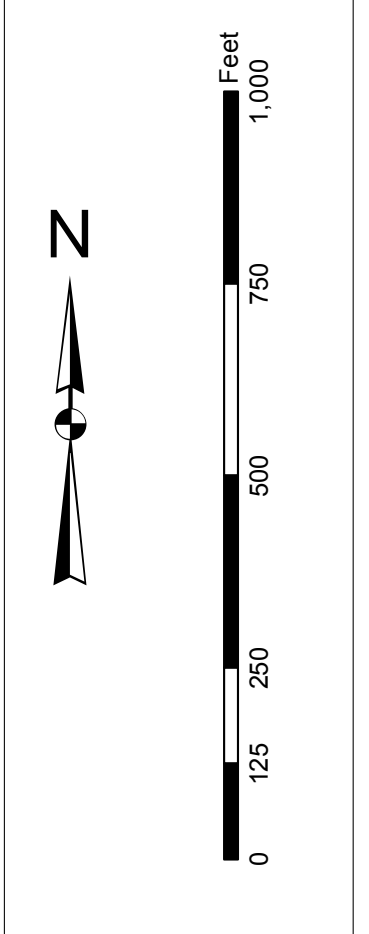


Designed by:	Charleston District Office	Design Date:	20 Nov 2014
Reviewed by:	Charleston District Office	Project Reference Number:	13000
Scale:	1 inch = 250 feet	Survey Type:	Hydrographic
Projection:	NAD 83 StatePlane South Carolina FIPS 3200 Feet	Chart Number:	11000

Port Royal Harbor Channel Survey
The information depicted on this map represents the results of surveys made on the dates indicated and can only be considered as indicating the general character of the information shown. It is not to be used for navigation purposes.
Concluded on: 13 November 2014
Port Royal, South Carolina



Disclaimer:
This chart is a representation of the data provided to the Corps of Engineers. It is not a guarantee of accuracy. The Corps of Engineers is not responsible for any errors or omissions. The user assumes all liability for the use of this chart.



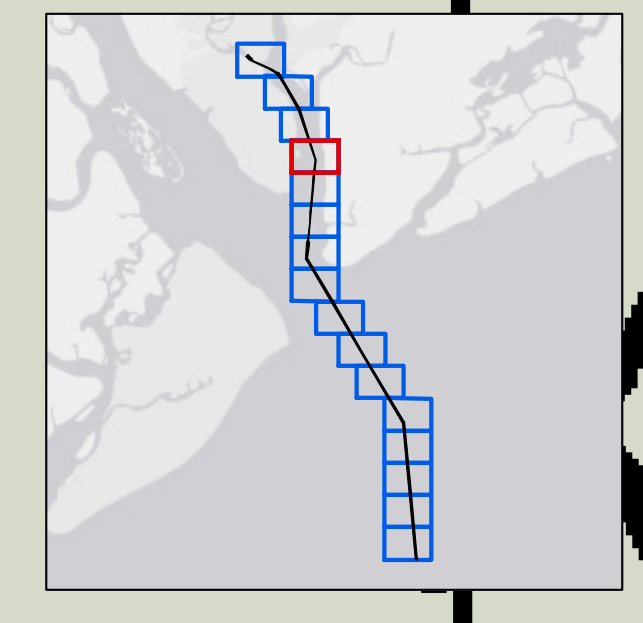
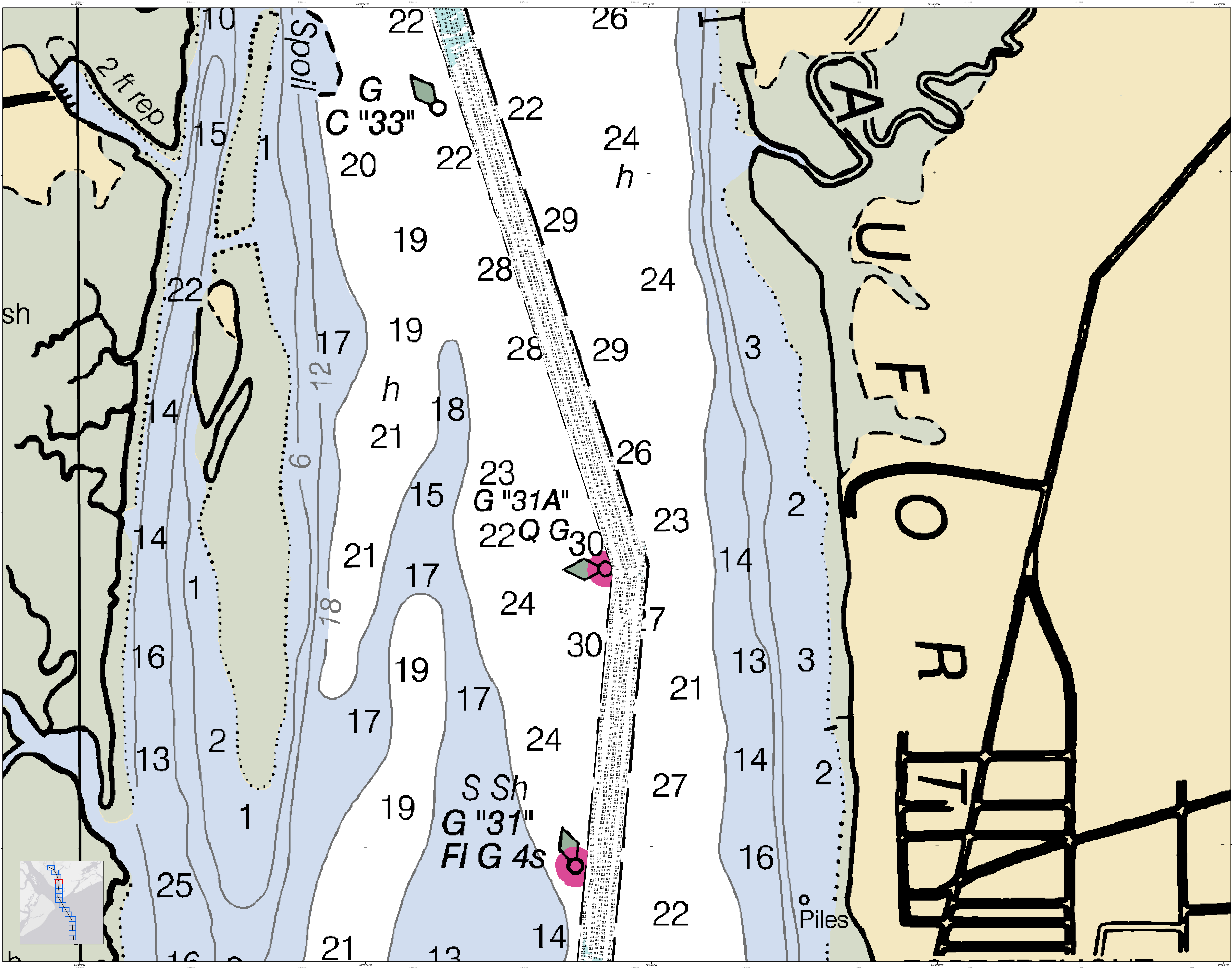
Legend

Symbol/Color	Description
Red	Obstruction
Green	Structure
Blue	Channel
Black	Bank
Yellow	Shoal
White	Clear
...	...

Designed by:	Hydro Software v3.6.1	Design Date:	20 Nov 2014	Creation Date:	20 Nov 2014
Reviewed by:	Absolute scale	Project Reference Number:	13000	Survey Type:	Hydrographic
Reference scale:	1 inch = 250 feet	Survey Date:	13 Nov 2014	Chart Scale:	1:25,000
Projection:	NAD 1983 StatePlane South Carolina FIPS 3600 Feet	Chart Name:	Port Royal Harbor Channel	Chart No.:	C012

Port Royal Harbor Channel Survey
The information depicted on this map represents the results of surveys made on the dates indicated and can only be considered as indicating the general character of the bottom. It is not to be used for navigation.

Concluded on: 13 November 2014
Port Royal, South Carolina



U.S. Army Corps of Engineers
 Charleston District

Port Royal Harbor Channel Survey
 The information depicted on this map represents the results of surveys made on the dates indicated and can only be considered as indicating the general character of the bottom. It is not intended for navigation. Concluded on: **13 November 2014**
 Port Royal, South Carolina

Design Date: 20 Nov 2014
Creation Date: 20 Nov 2014
Project Reference Number: 13000
Survey Type: Single-beam and multi-beam
Chart Scale: 1 inch = 250 feet
Projection: NAD 1983 StatePlane South Carolina FIPS 3200 Feet

U.S. Army Corps of Engineers
 CHARLESTON DISTRICT
 CHARLESTON, SOUTH CAROLINA
 DISTRICT ENGINEER
 CHARLESTON, SOUTH CAROLINA
 DISTRICT ENGINEER
 CHARLESTON, SOUTH CAROLINA
 DISTRICT ENGINEER

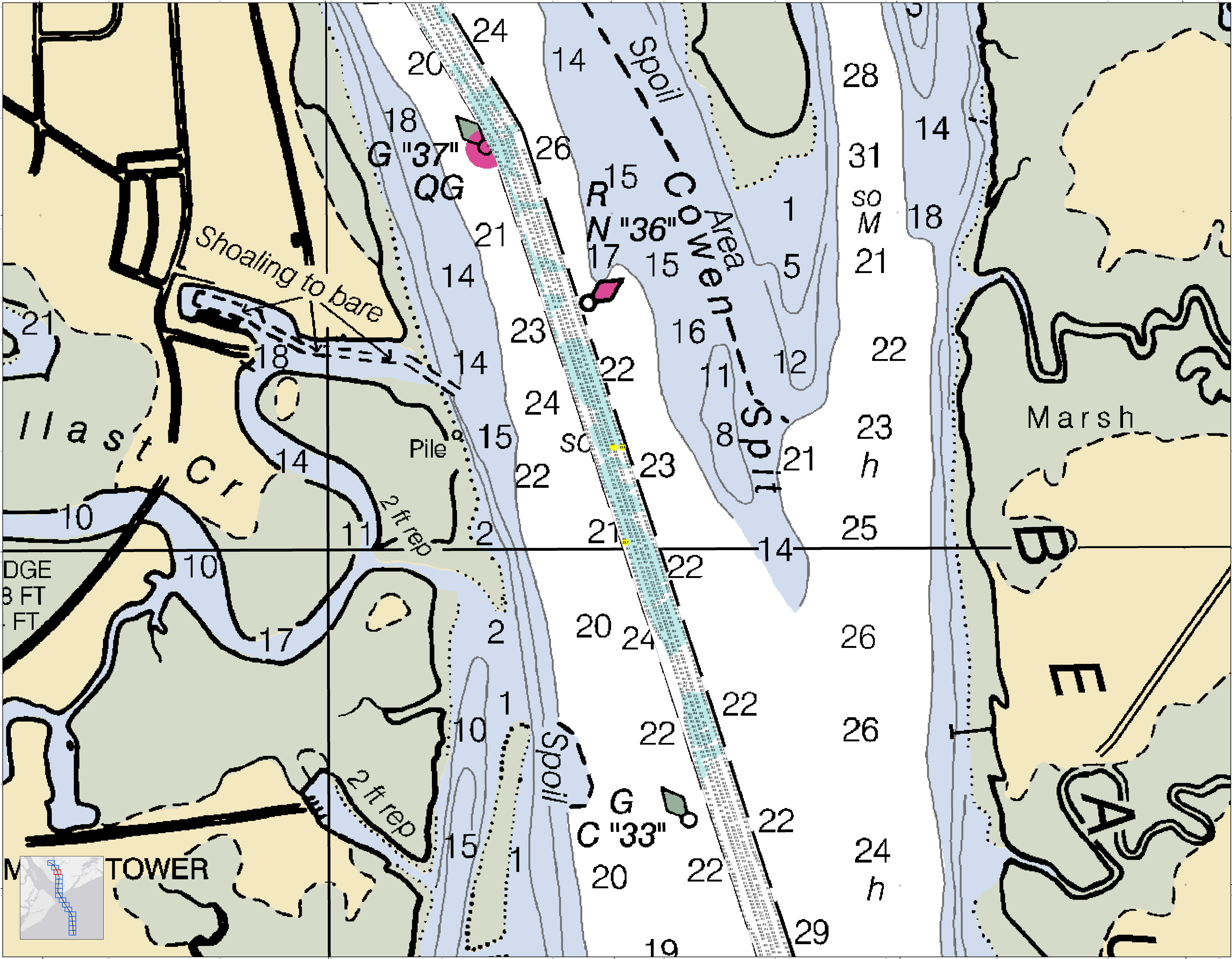
Legend

- Soundings
- Depth Contours
- Obstructions
- Navigation Aids
- Structural Elements
- Other

Scale: 1 inch = 250 feet
 0 250 500 750 1000 Feet

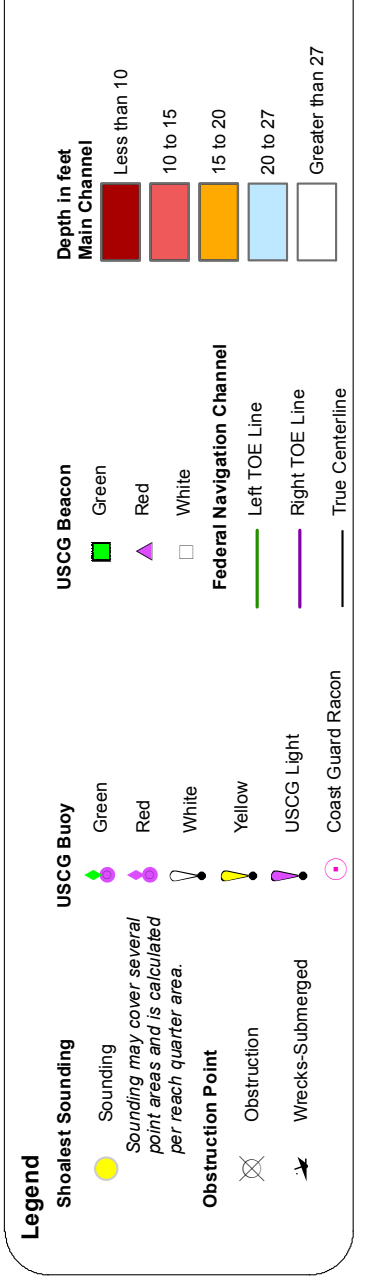
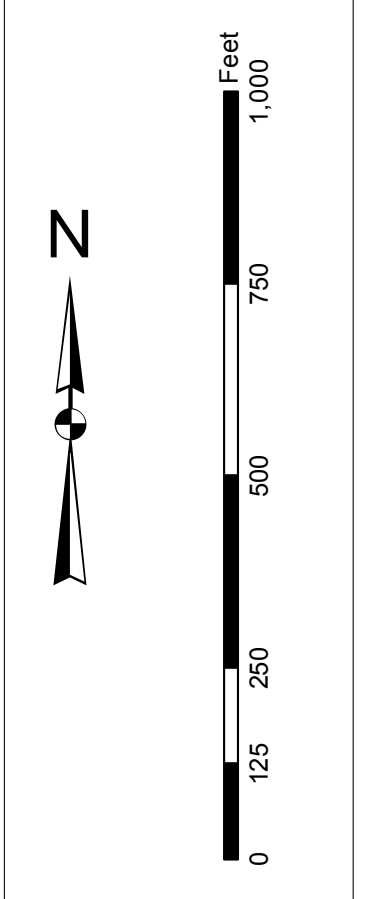
North Arrow

Sheet Reference Number: C012
Sheet 13 of 16



In the event that the U.S. Army Corps of Engineers, Charleston District Office, should be made to project, construct, maintain, or operate any project, the project shall be subject to the provisions of the project authorization. The project shall be subject to the provisions of the project authorization. The project shall be subject to the provisions of the project authorization.

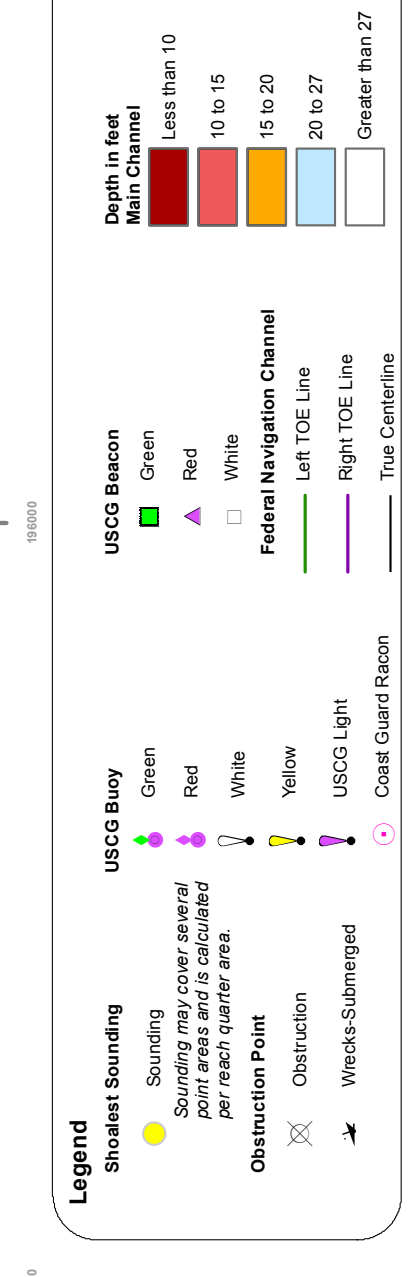
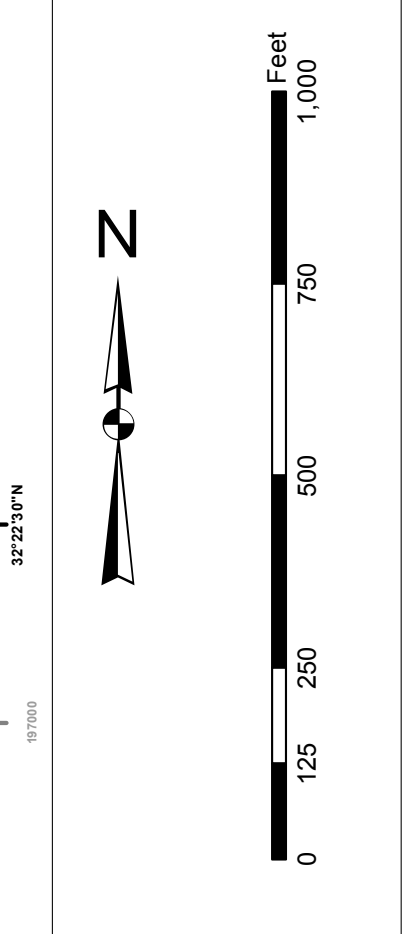
Projections:
1. North American Datum of 1983
2. State Plane South Carolina
3. UTM
4. UTM
5. UTM
6. UTM
7. UTM
8. UTM
9. UTM
10. UTM
11. UTM
12. UTM
13. UTM
14. UTM
15. UTM
16. UTM
17. UTM
18. UTM
19. UTM
20. UTM
21. UTM
22. UTM
23. UTM
24. UTM
25. UTM
26. UTM
27. UTM
28. UTM
29. UTM
30. UTM
31. UTM



Designed by: Hydro Software v3.6.1	Creation Date: 20 Nov 2014
Reviewed by: 1:5000	Project Reference Number: P000010
Reference scale: 1 inch = 250 feet	Survey Type: Single-beam and multi-beam
Projection: NAD 1983 StatePlane South Carolina FIPS 3200 Feet	Coordinate System: Coordinate System

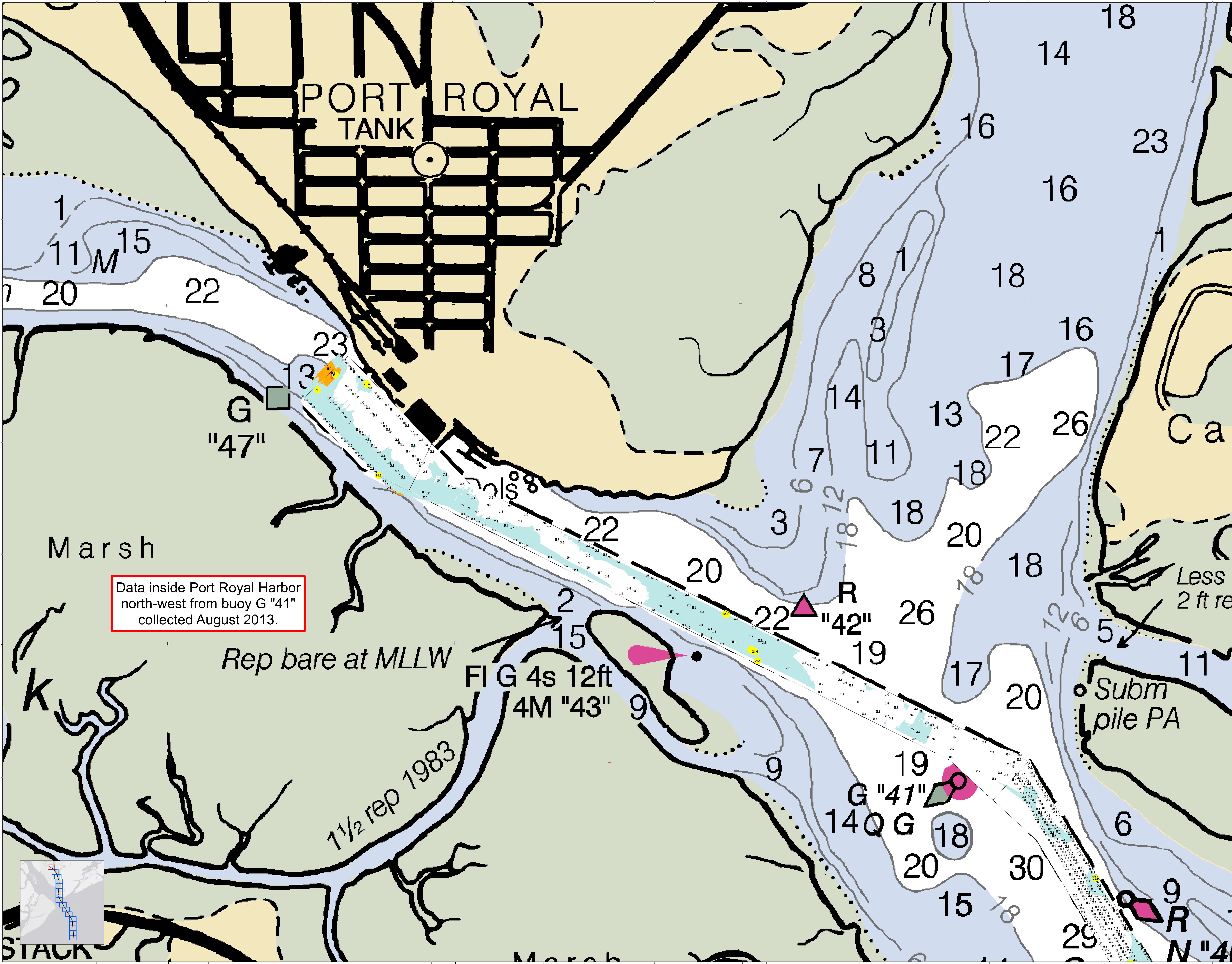
Port Royal Harbor Channel Survey
The information depicted on this map represents the results of surveys made on the dates indicated and can only be considered as indicating the general location of the objects shown. It is not to be used for navigation.
Concluded on: 13 November 2014
Port Royal, South Carolina

In the event that the U.S. Army Corps of Engineers, Charleston District Office, Special District Office, or District Office is unable to provide the information requested, the user should contact the District Office, Charleston District, 1000 North Main Street, Charleston, SC 29403, or the District Office, Charleston District, 1000 North Main Street, Charleston, SC 29403. The user should also contact the District Office, Charleston District, 1000 North Main Street, Charleston, SC 29403, or the District Office, Charleston District, 1000 North Main Street, Charleston, SC 29403. The user should also contact the District Office, Charleston District, 1000 North Main Street, Charleston, SC 29403, or the District Office, Charleston District, 1000 North Main Street, Charleston, SC 29403.



Designed by:	Hydro Software v3.6.1	Creation Date:	20 Nov 2014
Reviewed by:	Absolute scale	Project Reference Number:	11 Dec 2014
Scale:	1:5000	Survey Type:	PORT0010
Reference scale:	1 inch = 250 feet	Stationing:	Station and mid-station
Projection:	NAD 1983 StatePlane South Carolina FIPS 3200 Feet	Coordinate System:	Coordinate System

Port Royal Harbor Channel Survey
The information depicted on this map represents the results of surveys made on the dates indicated and can only be considered as indicating the general character of the bottom and is not to be used for navigation.
Concluded on: 13 November 2014
Port Royal, South Carolina



Data inside Port Royal Harbor north-west from buoy G "41" collected August 2013.

Rep bare at MLLW

1 1/2 rep 1983

FI G 4s 12ft
4M "43"

G "41"

Subm pile PA

