

# NWW 2015 Dredging Update

**Jeannette Wilson**  
Navigation Program  
Business Line Manager  
Walla Walla District

May 27, 2015  
Columbia-Snake River Navigation System  
Spring Stakeholder Meeting



# Agenda

- Contract Overview
- Work Conducted



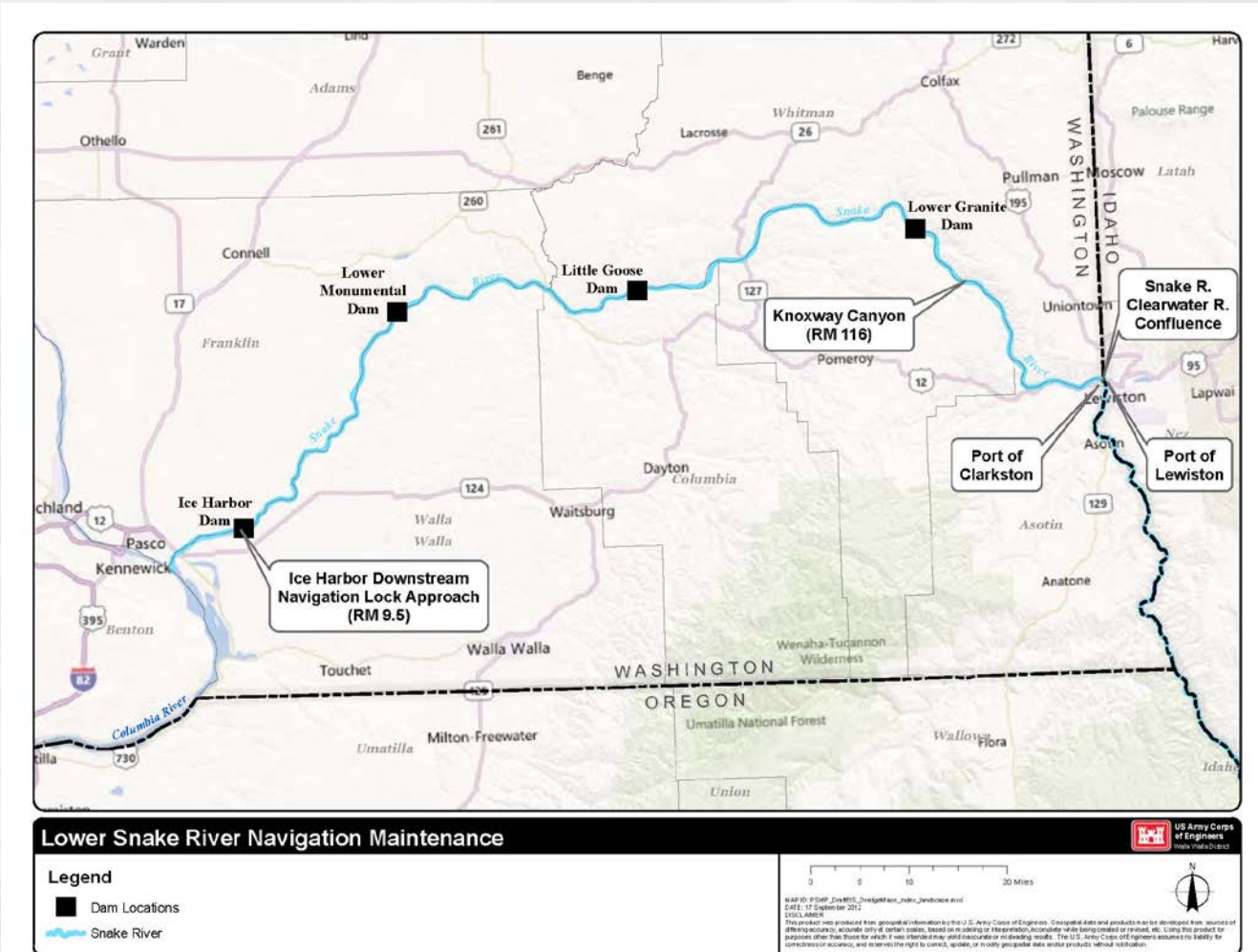
**BUILDING STRONG®**

# NWW 2015 Dredging Update

- Contract awarded November 2014
- Work initiated Jan 2015
- Dredging complete Feb 2015
- Removed about 372,305 cubic yards of material from the Snake River Channel
- Conducted in-water disposal at RM 116
  - ▶ Created beneficial habitat for migrating juvenile salmonids



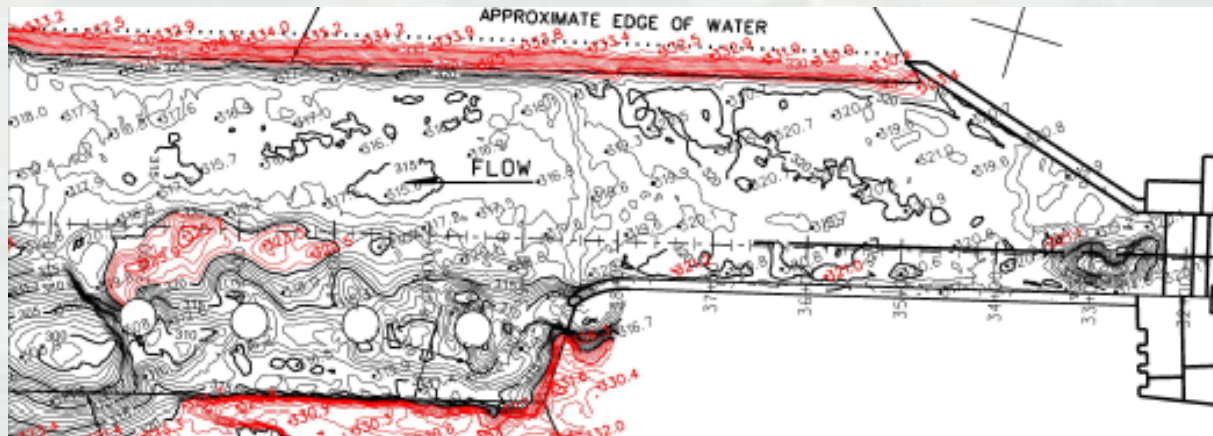
# NWW 2015 Dredging Update



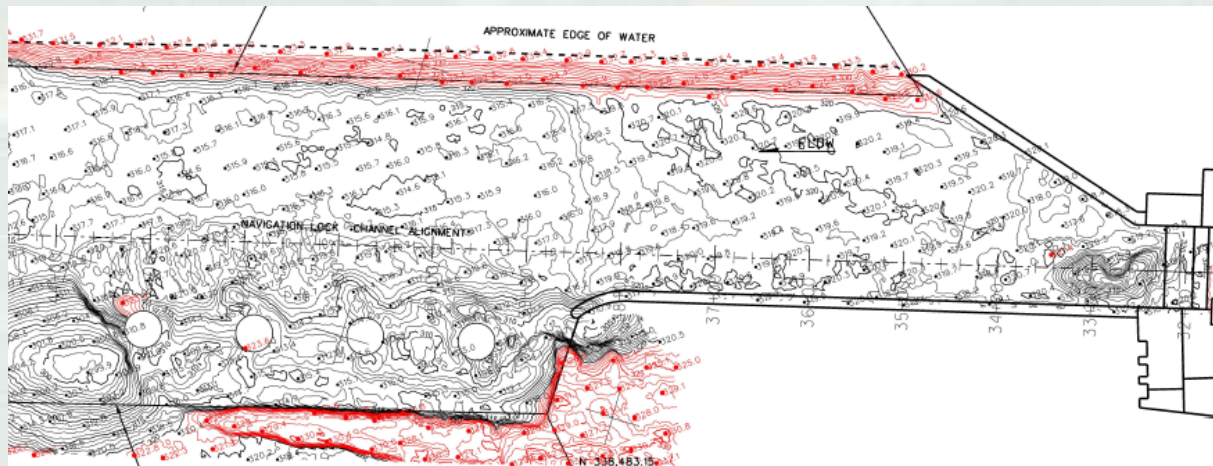


# NWW 2015 Dredging Update Ice Harbor

Pre  
Dredge



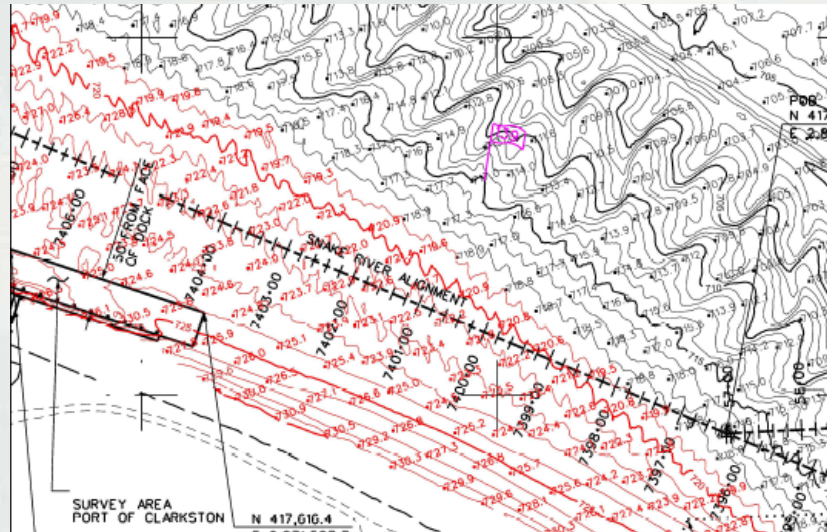
Post  
Dredge



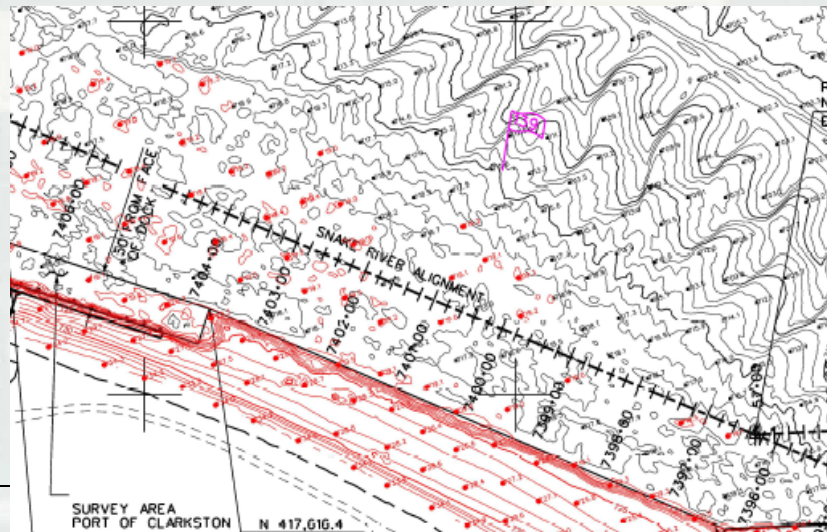
BUILDING STRONG®

# NWW 2015 Dredging Update Snake and Clearwater Confluence

Pre  
Dredge



Post  
Dredge

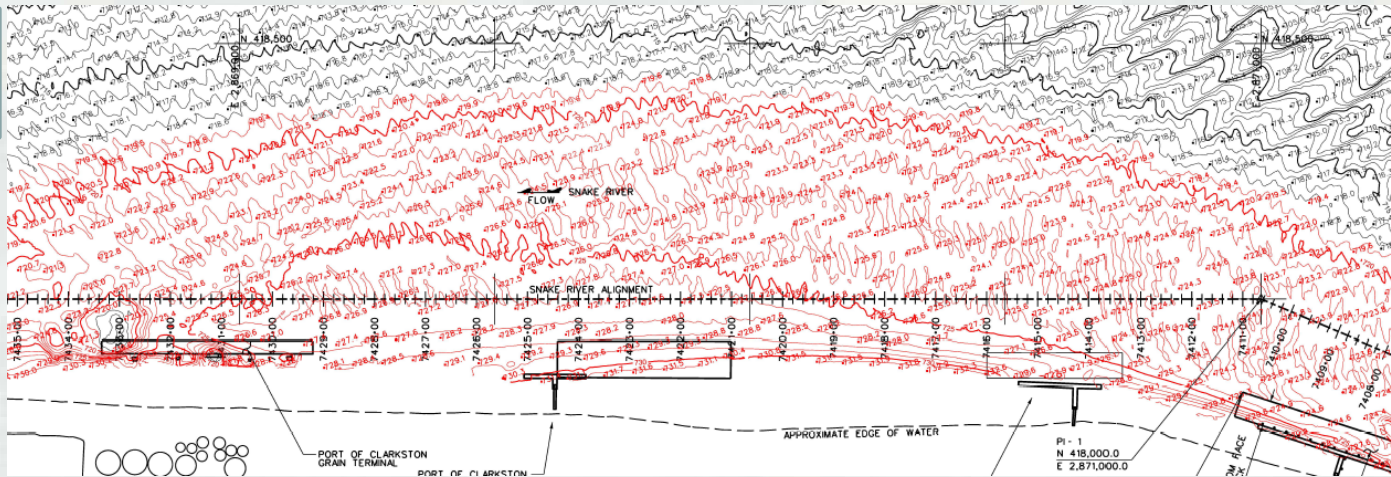


**BUILDING STRONG®**

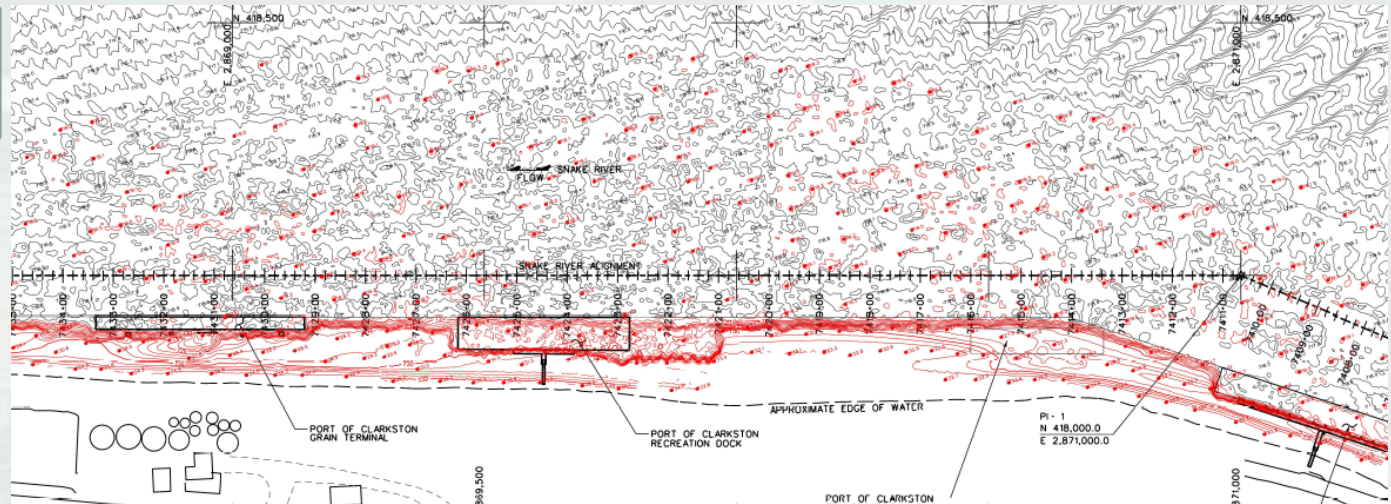


# NWW 2015 Dredging Update Port of Clarkston

Pre  
Dredge



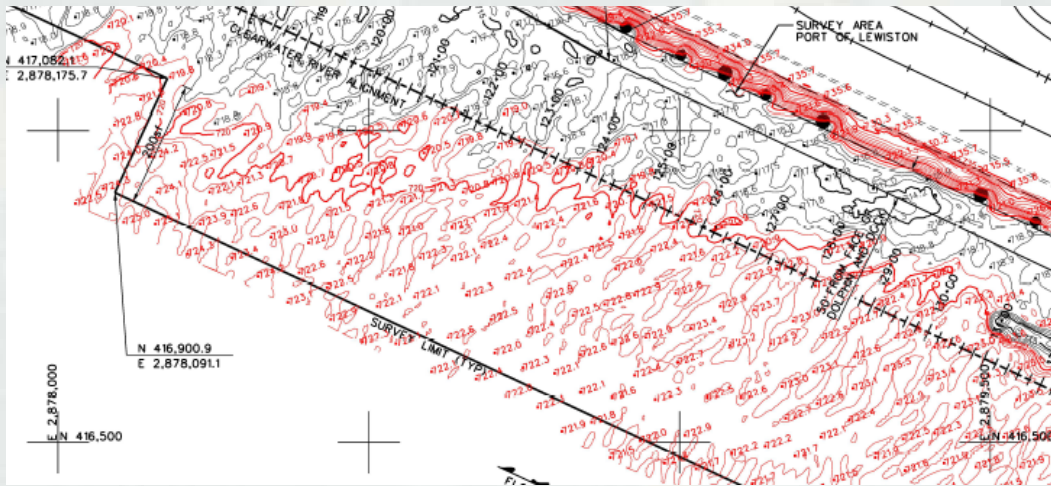
Post  
Dredge



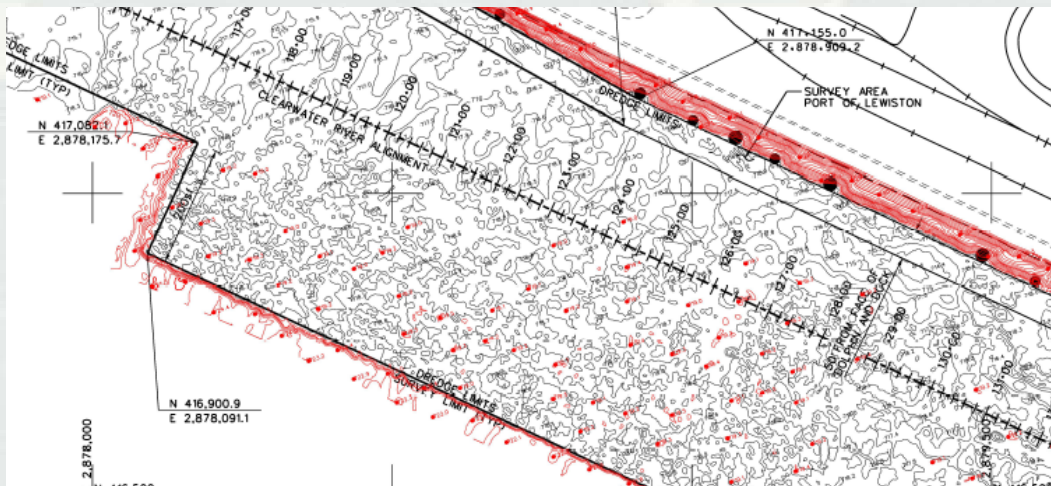
**BUILDING STRONG®**

# NWW 2015 Dredging Update Port of Lewiston

Pre  
Dredge



Post  
Dredge



**BUILDING STRONG®**



# NWW 2015 Dredging Update

- Lower Granite Pool returned to Minimum Operating Pool (MOP) April 3 for the first time since 2010
  - ▶ No issues in the Federal Channel once returned to MOP
  - ▶ MOP impacted local marinas and recreational boat ramps



# Questions?



---

**BUILDING STRONG®**

# NWW 2015 Hydrographic Survey Plan

**Jeanette Wilson**

Navigation Program

Business Line Manager

Walla Walla District

March 27, 2015

Columbia-Snake River Navigation System

Spring Stakeholder Meeting



US Army Corps of Engineers  
**BUILDING STRONG**

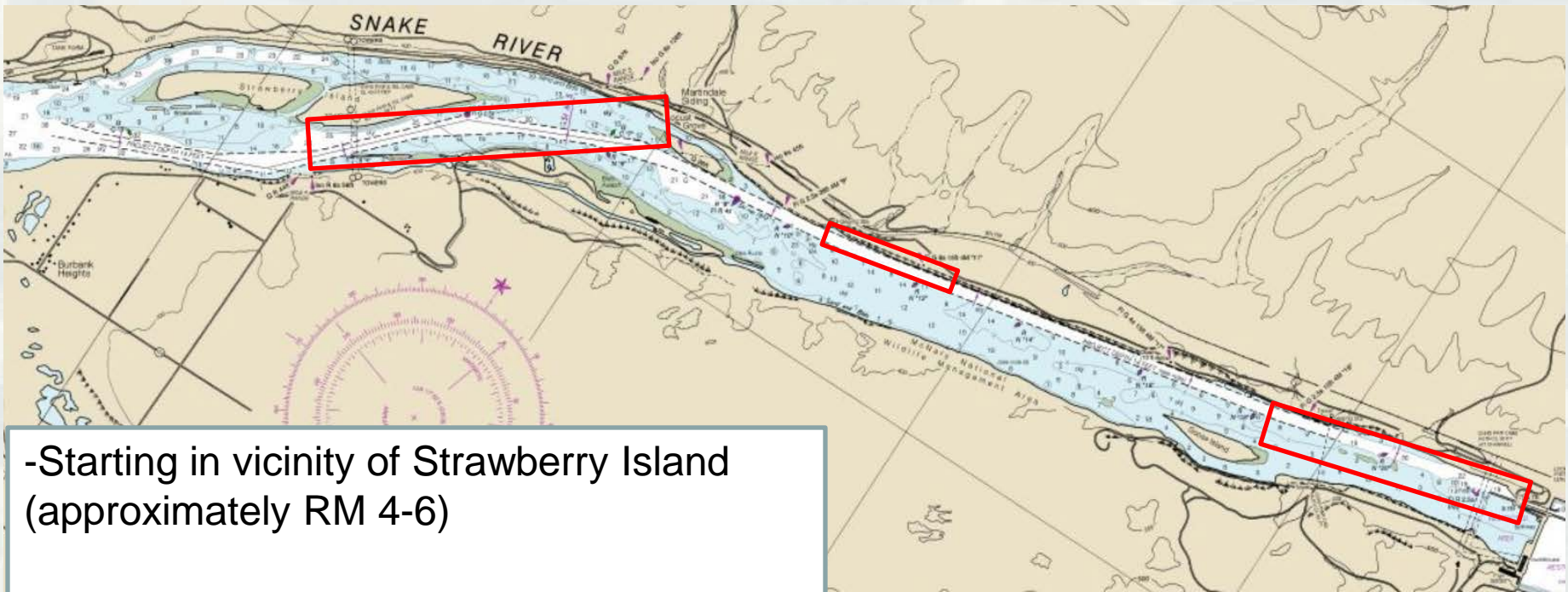


# Agenda

- McNary Pool- Ice Harbor Cut
- Ice Harbor Pool
- Little Goose Pool
- Lower Granite Pool



# McNary Pool – Ice Harbor Cut

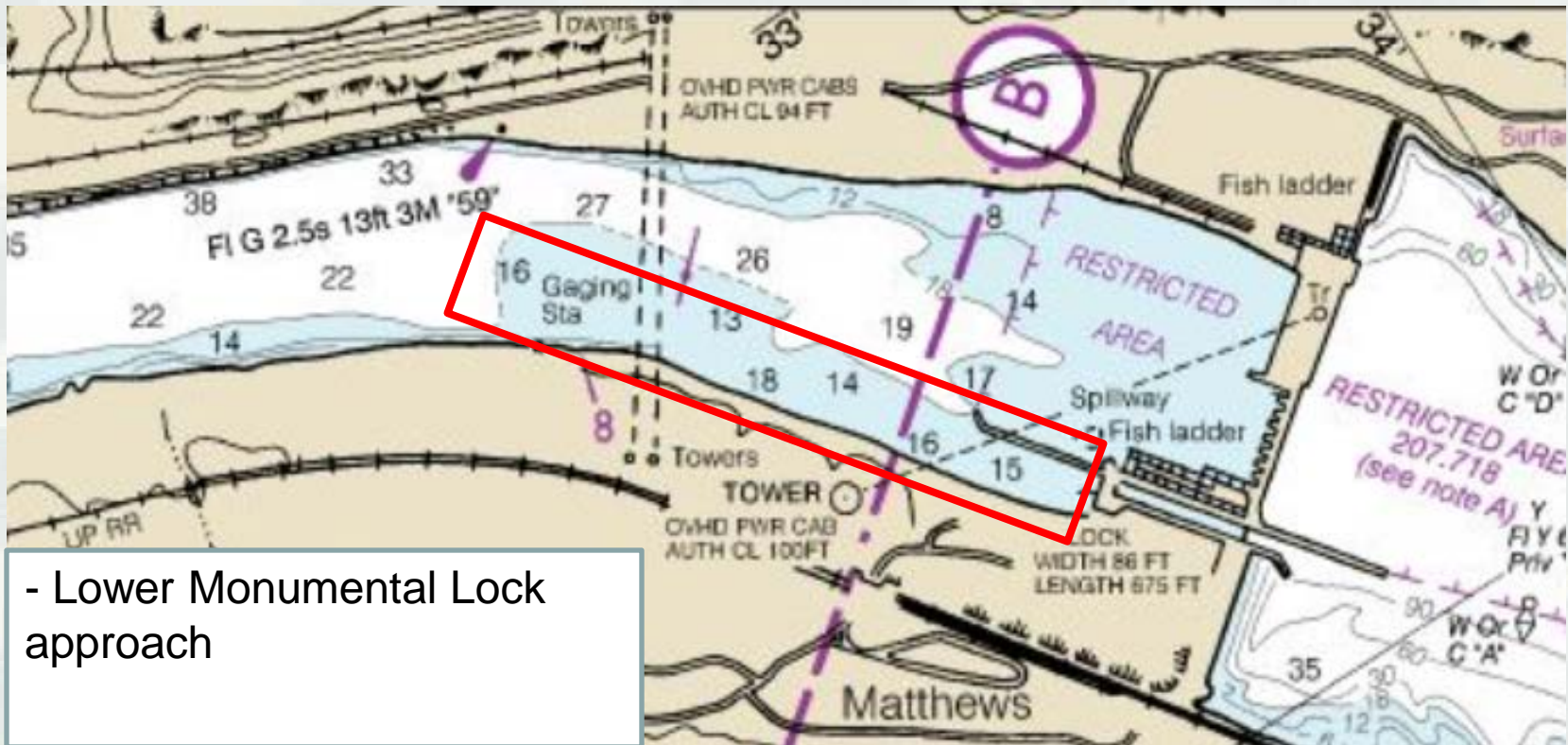


- Starting in vicinity of Strawberry Island (approximately RM 4-6)
- Ice Harbor Lock approach (8.5- 10)



**BUILDING STRONG®**

# Ice Harbor Pool



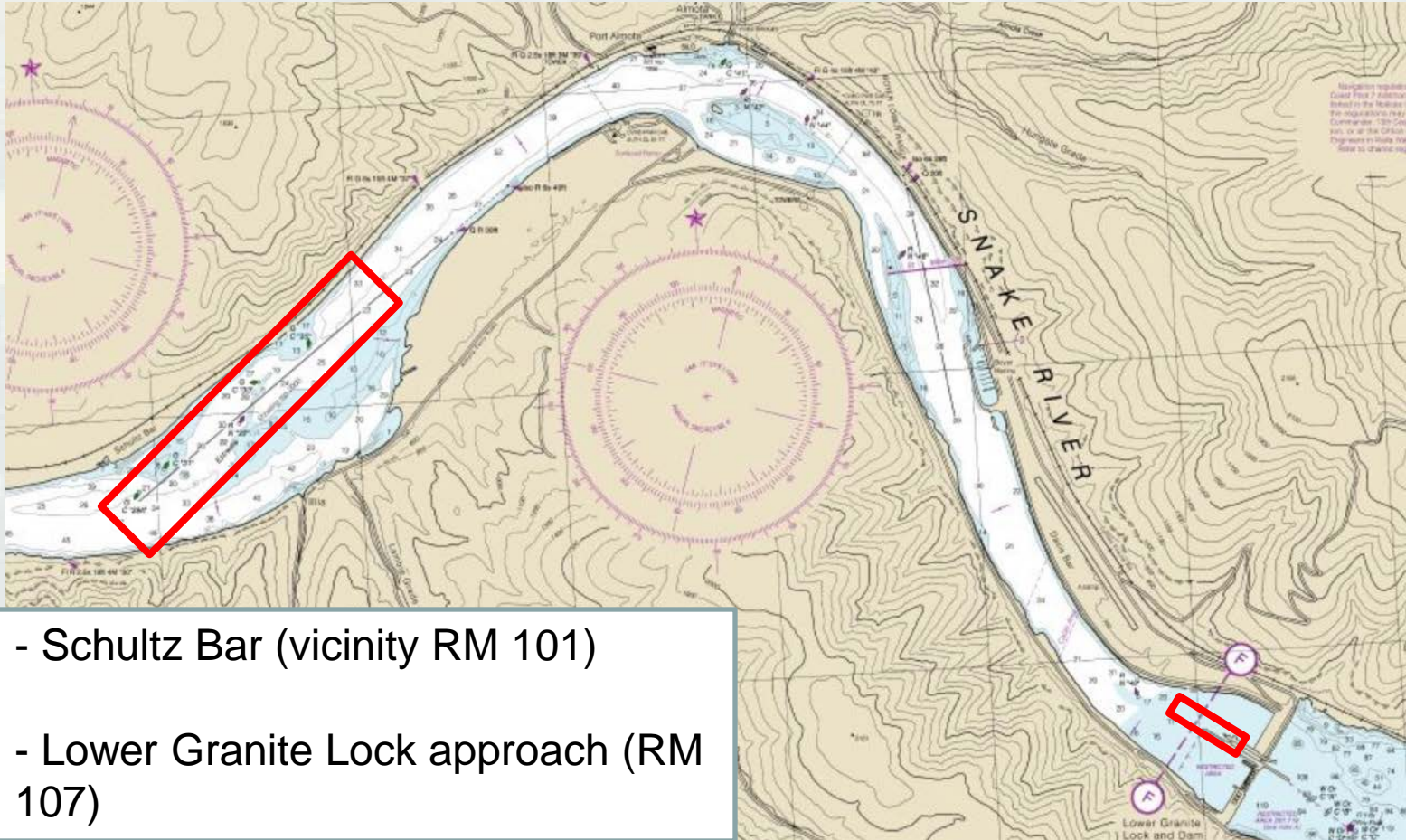
- Lower Monumental Lock approach



BUILDING STRONG®



# Little Goose Pool

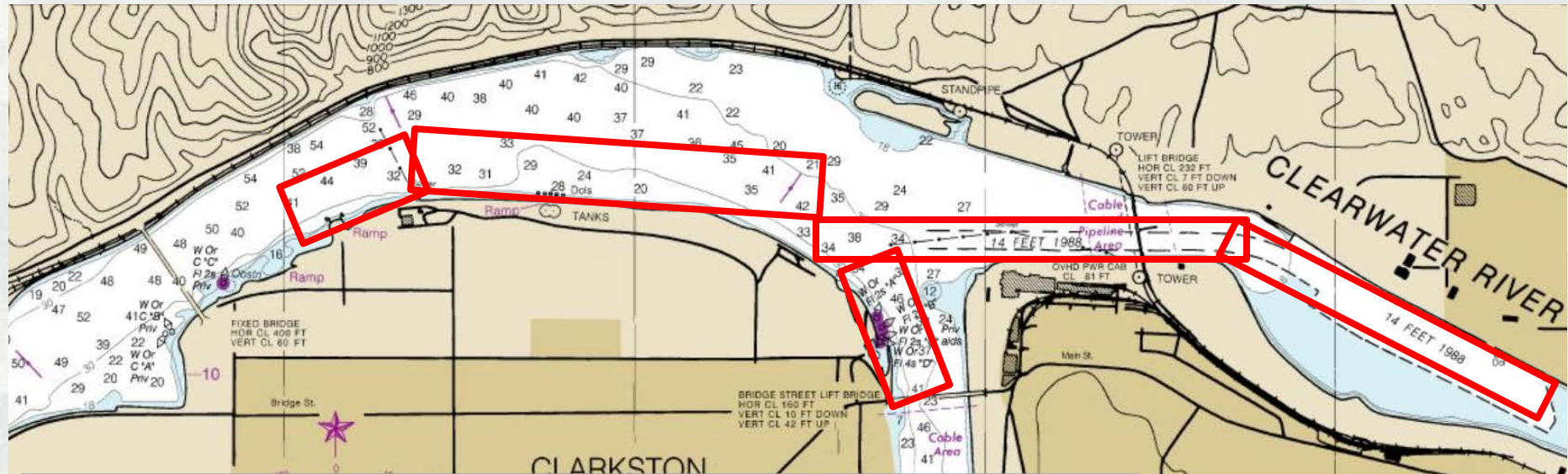


- Schultz Bar (vicinity RM 101)
- Lower Granite Lock approach (RM 107)



**BUILDING STRONG®**

# Lower Granite Pool



- Snake & Clearwater confluence
- Not shown: Knoxway Canyon at RM 116; Downstream of Chief Timothy at RM 130; and vicinity of RM 120



# Questions?



---

**BUILDING STRONG®**