

KANSAS CITY DISTRICT

NAVIGATION

Missouri River Ops

James “J” Rudy

Area Engineer

Missouri River Area Office

10 February 2016



®

US Army Corps of Engineers
BUILDING STRONG®



Outline

- Budget
- RM 178 – Construction Update
- Navigation Concerns

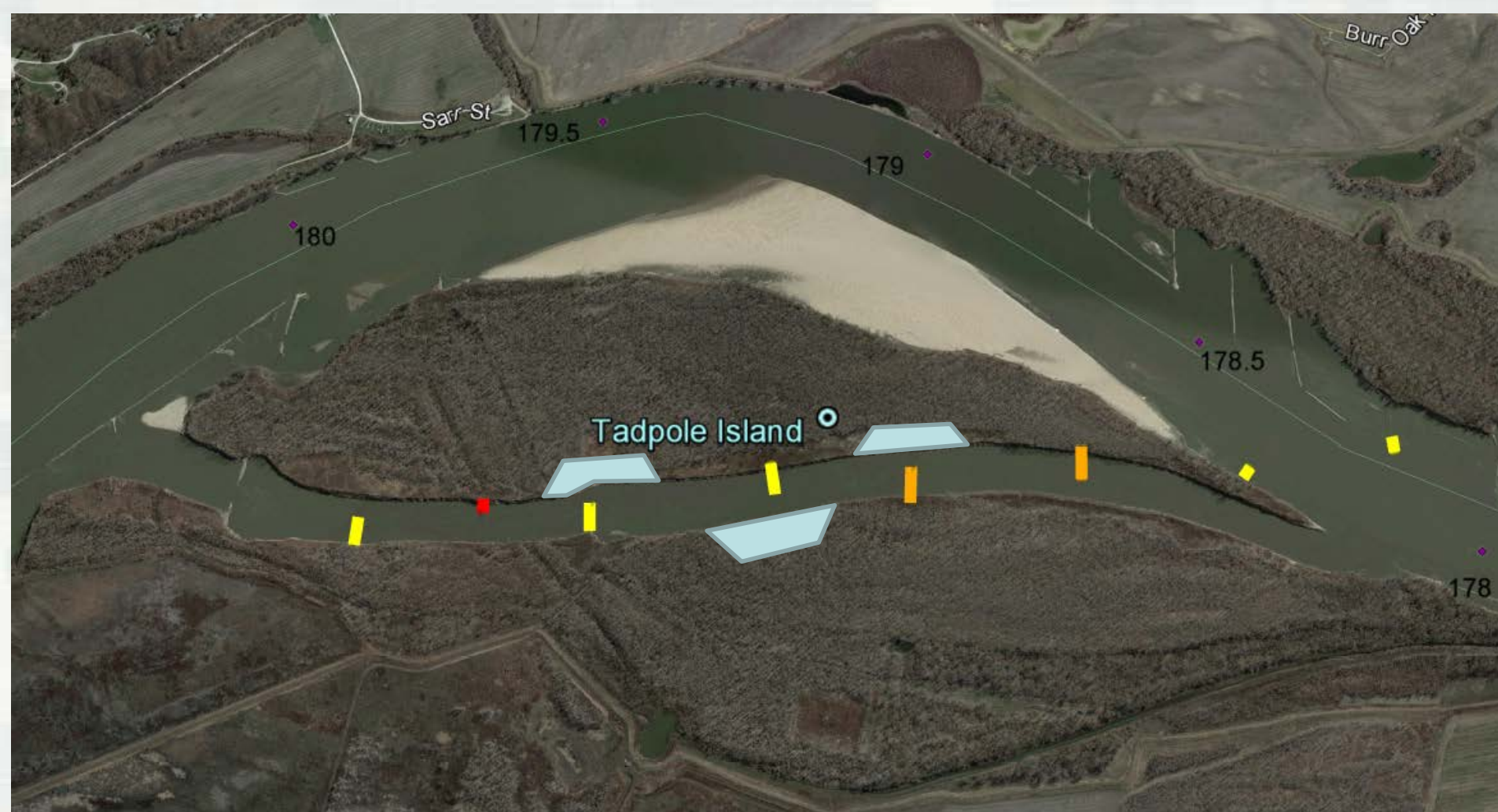


Budget

	FY12	FY13	FY14	FY15	FY16^	FY17
BSNP Nav O&M	\$3.960	\$5.060	\$5.200	\$6.919	\$ 6.132	\$ -
BSNP Ens O&M	\$0.350	\$0.414	\$0.450	\$0.774	\$0.300	\$-
MRRP Ens O&M	\$0.000	\$0.000	\$1.100	\$3.900	\$2.550	\$-
Total	\$4.3100	\$5.474	\$6.750	\$11.593	\$8.982	\$-



Tadpole Island



Navigation Concerns

- RM 25.5
- RM 57
- RM 44
- RM 48.5
- RM 10
- RM 51-53
- RM 91.5
- RM 130 – 132
- RM 212.5
- RM 214.2
- RM 216 – 218
- RM 256.4

