



**US Army Corps of Engineers**  
**BUILDING STRONG®**

# MEMPHIS DISTRICT



# MISSISSIPPI RIVER LEVEES

**AR, IL, KY, LA, MS, TN – MEMPHIS DISTRICT LIMITS**



US Army Corps  
of Engineers®  
Memphis District

# TABLE OF CONTENTS

**BUILDING STRONG®**

<b>Memphis District Overview</b>	<b>II</b>
<b>Mississippi Valley Division Map</b>	<b>IV</b>
<b>Memphis District Congressional Map</b>	<b>V</b>
<b>PROJECTS</b>	
Mississippi River Levees (Construction), AR, IL, KY, MS, MO, TN	1
Mississippi River Levees (Maintenance), AR, IL, KY, MS, MO, TN	3



US Army Corps  
of Engineers®  
Memphis District

# MEMPHIS DISTRICT OVERVIEW

**BUILDING STRONG®**



The Memphis District was established in 1882, and is one of six districts in U.S. Army Corps of Engineers' Mississippi Valley Division. Encompassing almost 25,000 square miles, the Memphis District is responsible for federal civil works projects in portions of six states -- Arkansas, Kentucky, Illinois, Mississippi, Missouri and Tennessee.

**Memphis District**



**District Employees**

Commanded by Col. Jeffery A. Anderson, the district employs about 500 federal civil service workers. These professionals and craftsmen provide a broad range of technical capabilities to address the Mid-South region's water resource needs. The Memphis District team includes civil, electrical, structural and mechanical engineers, as well as biologists, economists, clerical workers and many skilled laborers.



**Ensley Engineer Yard**

In addition to our downtown Memphis headquarters located in the Clifford Davis/Odell Horton Federal Building, we also have river engineering and marine mooring facilities at Ensley Engineer Yard in south Memphis at McKellar Lake. Field offices are located in Wynne, Arkansas, and Caruthersville and East Prairie, Missouri.

The district has three major mission areas – flood risk management, navigation and environmental stewardship – with our total civil works program averaging more than \$100 million a year.



US Army Corps  
of Engineers®  
Memphis District

# MEMPHIS DISTRICT OVERVIEW

(Continued)

BUILDING STRONG®



**Dredging for Navigation**

On the Mississippi River, the Memphis District maintains a minimum 9-foot-deep, 300-foot-wide navigation channel. The Mississippi River is the heart of a vast inland navigable waterway system that extends for 12,350 miles. Channel improvements and maintenance dredging are primary tools for keeping the Mississippi open. More than 250 million tons of river-borne commodities pass through the district's reach of the river each year.



**Emergency Management**

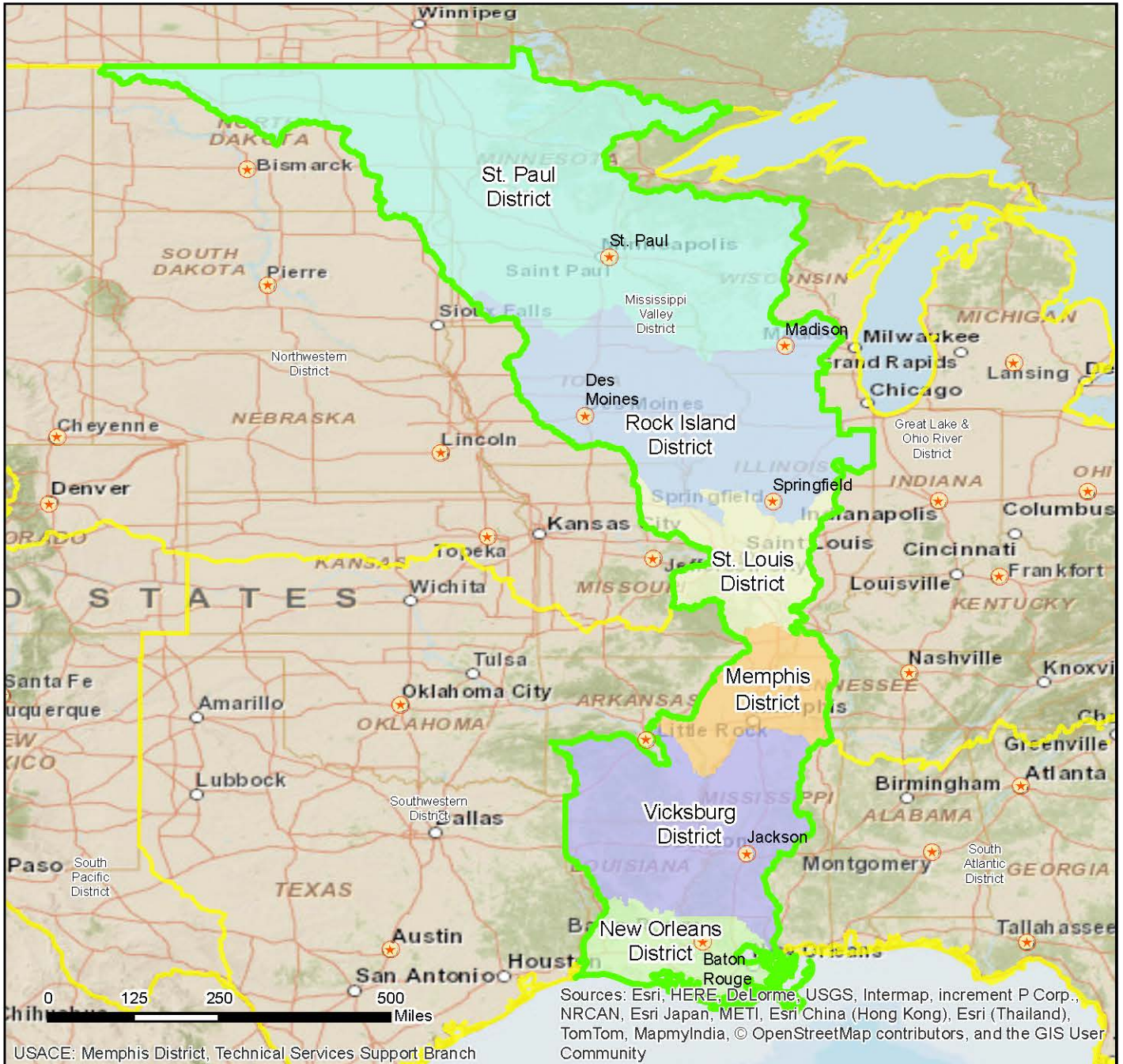
In addition to our main channel navigation and flood risk reduction work, we also provide Emergency Operations planning and response services through our Readiness Branch for natural disasters like floods, hurricanes, earthquakes, tornadoes, and man-made disasters.



**Students in the STEM Program meet with Memphis District biologists**

Overall, the Memphis District is a multi-talented public engineering agency that can solve a variety of civil works problems. We assist other government agencies with their engineering challenges through our "Support for Others Program," and we contribute volunteer community services to the people of the Mid-South. We are also active participants in the Science, Technology, Engineering and Math (STEM) program. The District is a valuable resource, and we will help the people of the six states we serve meet the civil works challenges they face.

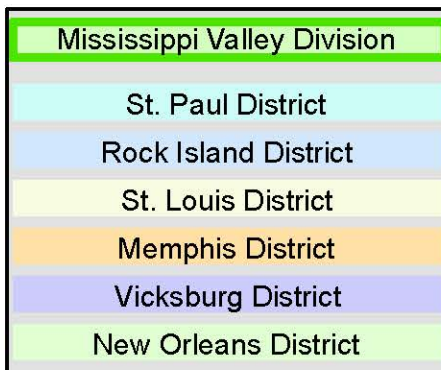
Public safety is the Corps' number one priority. Our pledge is to meet the public engineering needs of your constituents with dedication and professionalism.



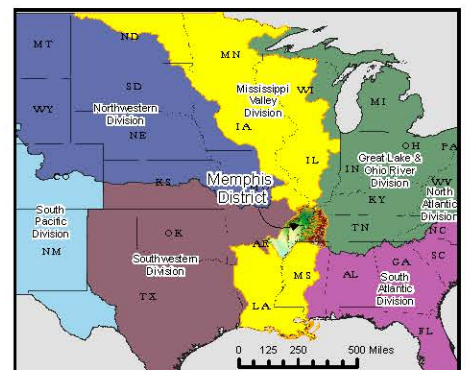
### Vicinity Map



### Legend



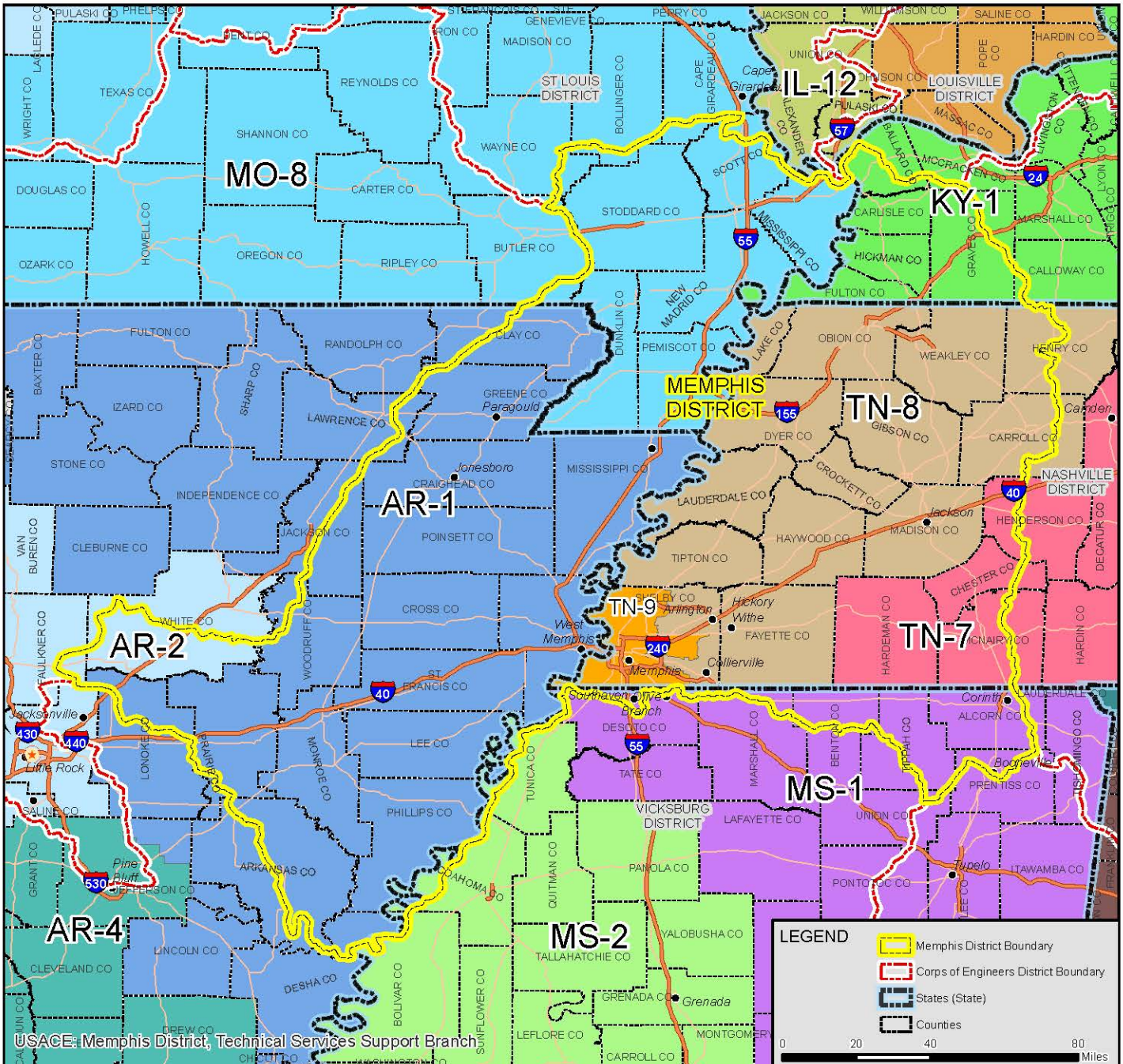
### Location in the Division



# CONGRESSIONAL DISTRICTS WITHIN MEMPHIS DISTRICT AREA OF RESPONSIBILITY



**BUILDING STRONG®**



### ARKANSAS

GOV. Mike Beebe (D)  
SEN. Mark Pryor (D)  
SEN. John Boozman (R)  
REP. Rick Crawford (R AR - 1)  
REP. Tim Griffin (R AR - 2)

### ILLINOIS

GOV. Pat Quinn (D)  
SEN. Richard J. Durbin (D)  
SEN. Mark S. Kirk (R)  
REP. William Enyart (D IL - 12)

### KENTUCKY

GOV. Steven L. Beshear (D)  
SEN. Mitch McConnell (R)  
SEN. Randal Howard "Rand" Paul (R)  
REP. Edward Whitfield (R KY - 1)

### MISSISSIPPI

GOV. Phil Bryant (R)  
SEN. Thad Cochran (R)  
SEN. Roger Wicker (R)  
REP. Alan Nunnelee (R MS - 1)  
REP. Bennie Thompson (D MS - 2)

### MISSOURI

GOV. Jay Nixon (D)  
SEN. Claire McCaskill (D)  
SEN. Roy Blunt (R)  
REP. Jason Smith (R MO - 8)

### TENNESSEE

GOV. Bill Haslam (R)  
SEN. Lamar Alexander (R)  
SEN. Bob Corker (R)  
REP. Marsha Blackburn (R TN - 7)  
REP. Stephen Fincher (R TN - 8)  
REP. Steve Cohen (D TN - 9)

 <p>US Army Corps of Engineers® Memphis District</p>	<h1>Mississippi River Levees, AR, IL, KY, MS, MO, &amp; TN (Memphis District portion only) Construction</h1>
<b>BUILDING STRONG®</b>	

**Point of Contact**

**Jason E. Dickard**, Project Manager,  
Ph. (901) 544-0730  
[Jason.E.Dickard@usace.army.mil](mailto:Jason.E.Dickard@usace.army.mil)

**Authority:** Flood Control Act of 1928, as amended.

**Appropriation:** Energy and Water Development, Mississippi River and Tributaries, Construction

**Local Interest/Project Sponsor:** Local interests are required to provide all rights of way for levees on the Main Stem of the Mississippi River.

**Location:** The Mississippi River Levee (MRL) System provides flood protection to rural, agricultural and urban areas in the Lower Mississippi Valley Division. In the Memphis District, the levee system extends from Allenville, Missouri, on the Little River Headwater Diversion Channel to the vicinity of the mouth of the White River in Arkansas on the west bank, and from Hickman, Kentucky, to the Coahoma-Bolivar County line in Mississippi on the east bank, except where interrupted by high ground and tributary streams. Included in the system is the portion of the levee on the Ohio River that protects Mounds and Mound City, Illinois and the New Madrid Floodway Levees

**Description:** The Mississippi River Levee System provides flood protection to rural, agricultural and urban areas in the Lower Mississippi Valley Division. Approximately 626 miles of the mainline levee in the district are completed to approved grade and section out of the 633.3 miles authorized.

**Importance:** This project provides protection to numerous railroads, highways, and airfields connecting the major transportation centers that lie within the protected area along with several major transcontinental communication routes, highly developed agricultural areas, urban areas and many industries which are subject to flooding from the project flood. Repairs being performed with Disaster Relief Act funding will restore flood protection features to their original design. These repairs will significantly reduce the flood risk from post 2011 Flood conditions allowing the system to be ready for future flood events.

**Status:** Disaster Relief Act funds are being used to continue construction of seepage prevention measures on the mainline levee at Cairo, IL; Gammon, AR and Nash, MO. Regular funds are being used to fully fund a contract for installation of flood relief wells at Tunica, MS,

(Parcel 2) and for engineering, design and construction management activities in support of on-going and future construction work.

**Issues and Other Information:** The Levee System Evaluation Reports for the National Flood Insurance Program for Systems 1 and 3, which provides protection to southern Illinois and Kentucky, were completed in August 2010 and May 2012 respectively and a “Negative” finding was determined for both reports. Construction has been completed for Island 8, KY, Above Cairo, IL Relief Wells, Above Cairo, IL Slurry Trench and the City of Cairo, IL Relief Wells projects. Completion of construction of the Cairo, IL Parcel 5 slurry trench and berms is scheduled for November 2014 and will resolve the need for under seepage measures for those Systems.

**Project Financial Data (Memphis District only)<sup>1</sup>:**

Estimated Federal Cost	\$ 874,000,000
Estimated Non-Federal Cost	39,000,000
Estimated Total Cost	\$ 913,000,000

**Federal Funding Information:**

Allocations thru FY 2013	\$ 402,755,000
Allocation for FY 2014	5,342,000
President’s Budget, FY 2015	1,692,000
House Report, FY 2015	1,692,000

<sup>1</sup> Oct 2013 price level

**Disaster Relief Act Funding:**

Allocation thru FY 2013	\$ 15,080,000
Allocation for FY 2014	0

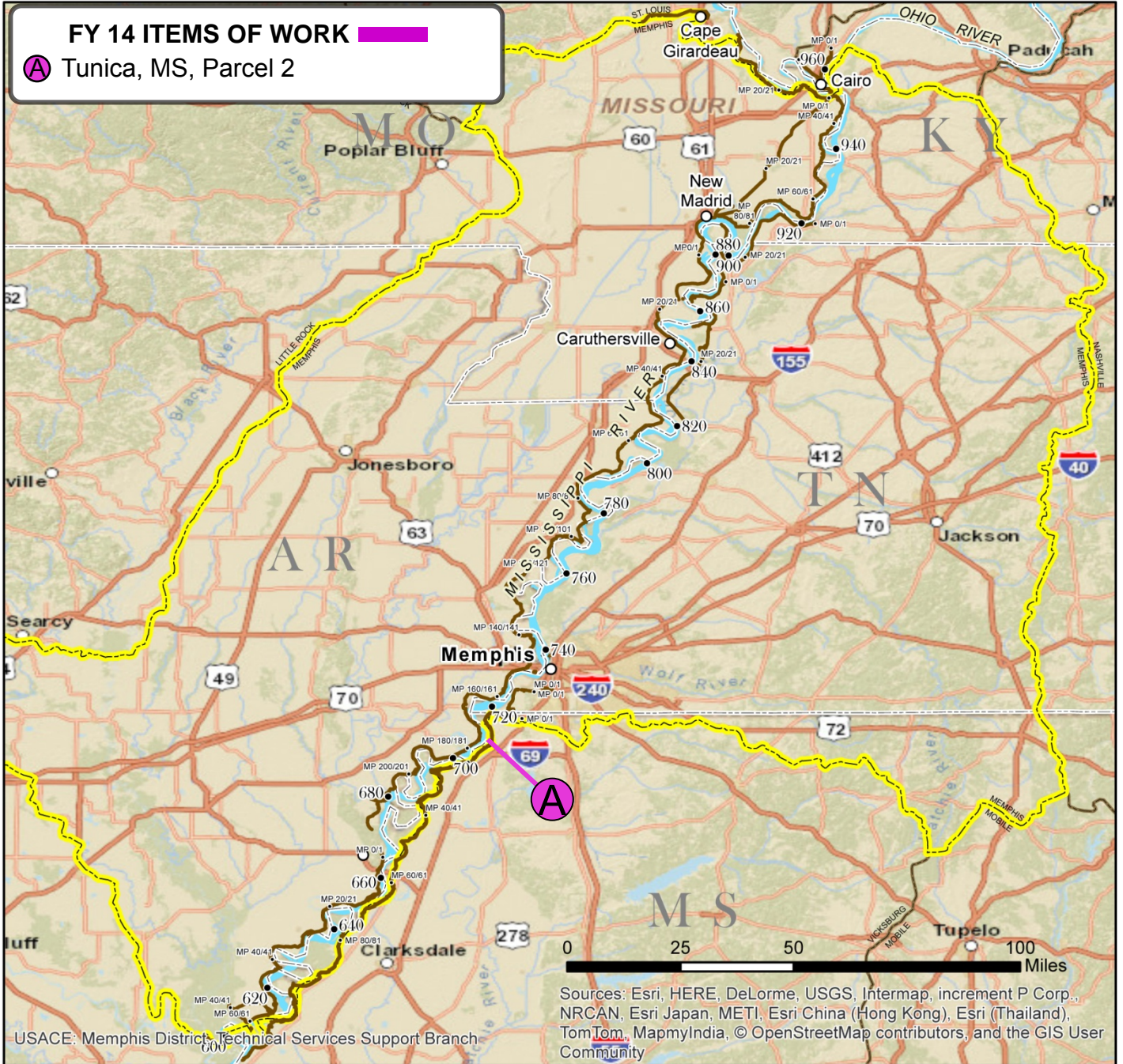


Cairo, IL Slurry Trench and Berm Parcel 5



## FY 14 ITEMS OF WORK

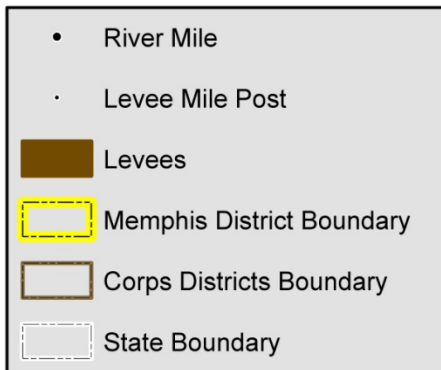
- (A) Tunica, MS, Parcel 2



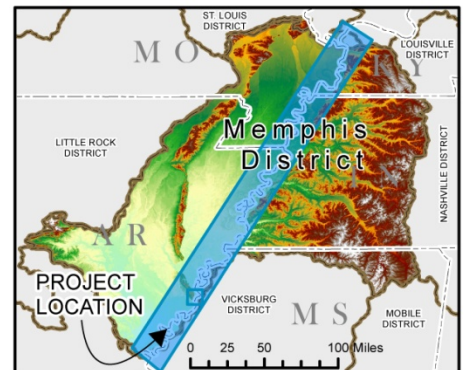
### Vicinity Map



### Legend



### Location in District







# Mississippi River Levees, AR, IL, KY, MS, MO & TN (Memphis District Portion Only) Maintenance

**BUILDING STRONG®**

**Point of Contact**

**Laura Rowland**, Project Manager,  
Ph. (901) 544-4018  
[laura.rowland@usace.army.mil](mailto:laura.rowland@usace.army.mil)

**Authority:** Flood Control Act of 15 May 1928, as amended.

**Appropriation:** Energy and Water Development, Mississippi River & Tributaries Maintenance

**Local Interest/Project Sponsor:** Local interests are responsible for minor maintenance and rights-of-way.

**Location:** The Mississippi River Levee (MRL) system, on the west bank, extends from Allenville, Missouri, on the Little River Diversion Channel generally southward to the vicinity of Venice, Louisiana. On the east bank the MRL system begins at Hickman, Kentucky, and ends opposite Venice, Louisiana, except where interrupted by hills and tributary streams. Parts of Alexander and Pulaski Counties in southern Illinois are also protected by elements of the MRL system.

**Description:** The project provides for the maintenance of authorized facilities for the protection against headwater floods of the Mississippi River by means of levees, berms, culverts and floodwalls. Major maintenance is a Federal responsibility.

**Importance:** This project provides protection to numerous railroads, highways, and airfields connecting the major transportation centers that lie within the protected area along with several major transcontinental communication routes, highly developed agricultural areas, urban areas and many industries which are subject to flooding from the project flood.

**Status:** Regular funds are being used to perform operation and maintenance activities, levee resurfacing, levee slide repairs, floodgate repairs and some culvert replacement. Disaster Relief Act funds have been used to bring the Birds Point-New Madrid Floodway, MO levee back to pre-flood protection levels. The final piece of construction will be completed this Fall. Funds included in the President's Budget will be used to perform regular operation and maintenance activities, including pumping station operations, levee repairs and culvert repairs and replacements at various locations.

**Issues and Other Information:** Repairs performed with Disaster Relief Act funding have restored flood protection features to their original design and re-established the authorized level of protection. These repairs will significantly reduce the flood risk to the area protected by this levee.

**Project Financial Data:**

Allocation for FY 2013:	\$ 4,633,000
Allocation for FY 2014:	4,649,000
President's Budget Request, FY2015:	4,650,000
House Report, FY 2015	4,650,000

**Disaster Relief Act Funding:**

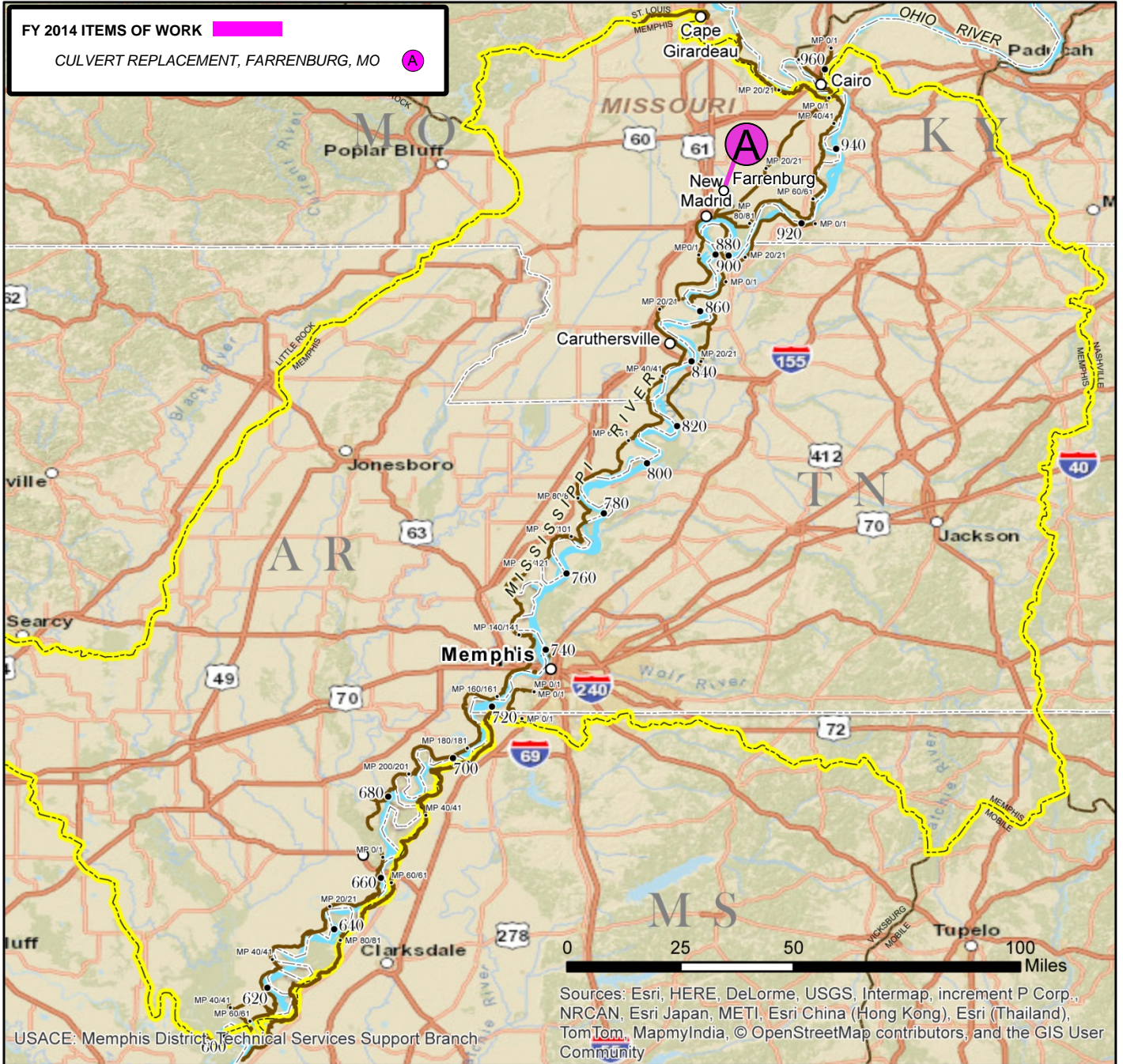
Allocation thru FY 2013	\$ 21,316,000
Allocation for FY 2014	5,000,000



One of several culverts to be replaced along the Farrenburg Levee



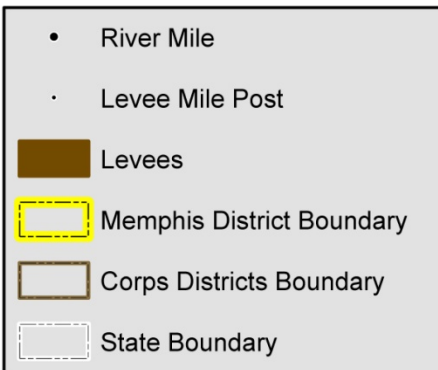
FY 2014 ITEMS OF WORK   
CULVERT REPLACEMENT, FARRENBURG, MO A



### Vicinity Map



### Legend



### Location in District

