

34°8'0"N

77°57'0"W




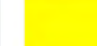






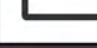
34°8'30"N

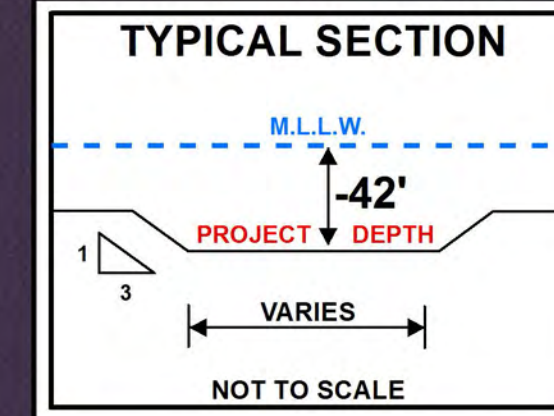
**LEGEND**

**Aids to Navigation**

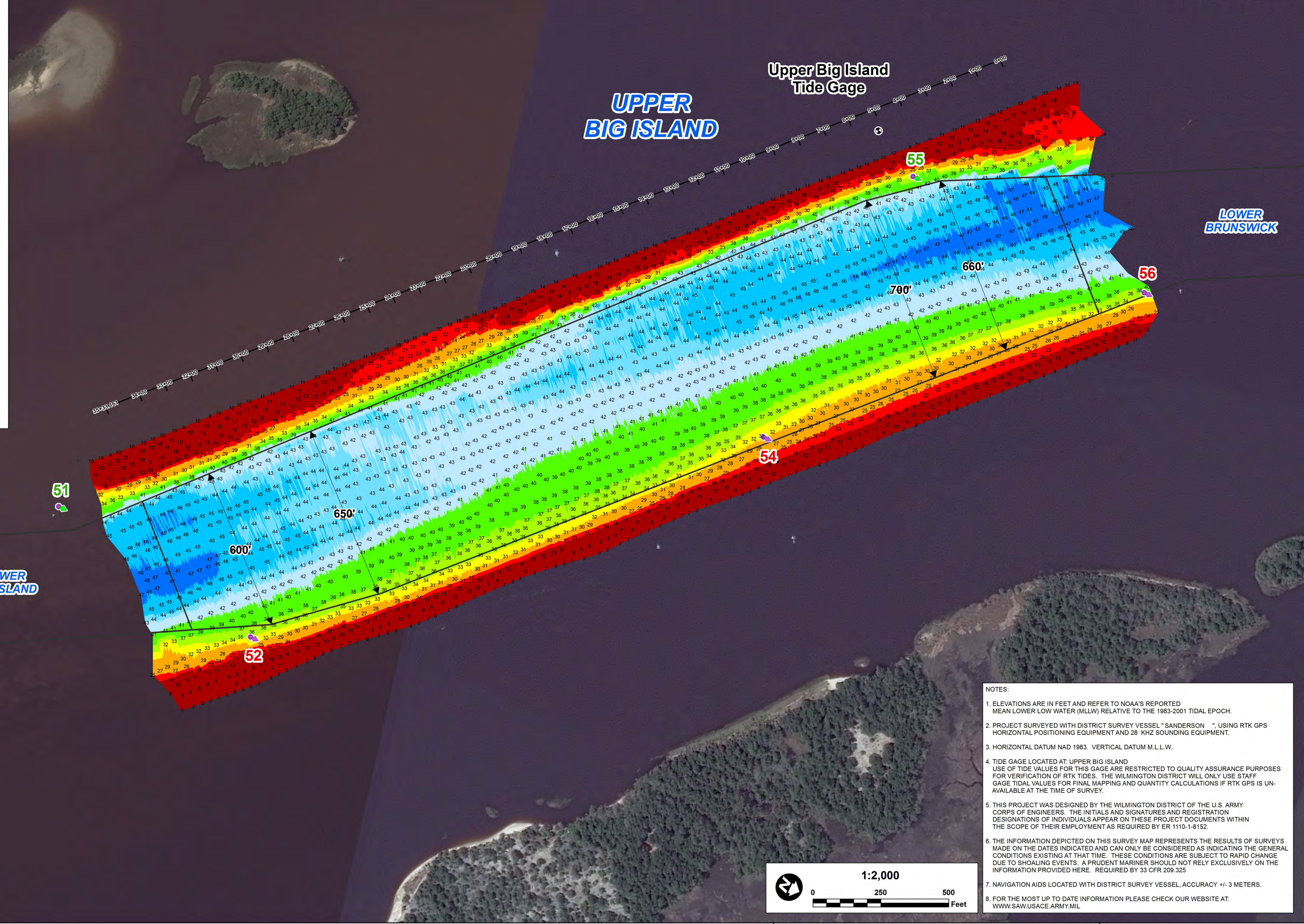
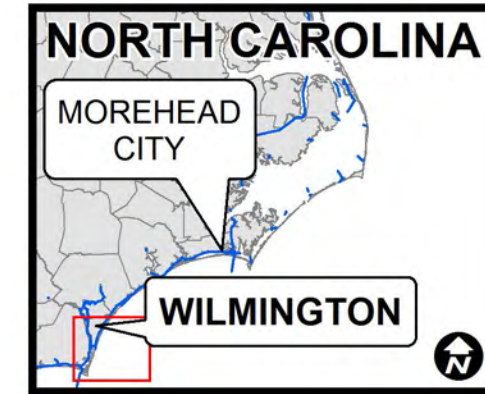
-  Can
-  Nun
-  Green Lighted Buoy
-  Red Lighted Buoy
-  Junction Marker
-  Green Light
-  Red Light
-  Green Daybeacon
-  Red Daybeacon
-  Danger Sign
-  Mileboard
-  Tide Gage

**Depth In Feet**

-  20 and Shallower
-  20 - 25
-  25 - 32
-  32 - 35
-  35 - 38
-  38 - 42
-  42 - 44
-  44 - 45
-  45 - 47
-  47 and Deeper
-  Navigation Channel

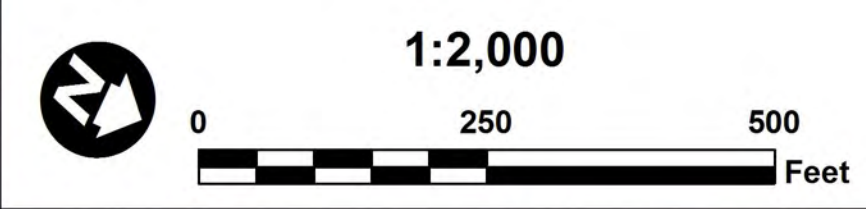


**US Army Corps of Engineers**  
Wilmington District



SURVEY DATE: 24 OCTOBER 2016	SURVEYED BY: WJC, JBD
MAP DATE: 25 OCTOBER 2016	MAPPED BY: K7PDPSSG
MAP SCALE: 1:2,000	PROCESSED BY: K7OPNDJM
IMAGERY DATE: 21 OCTOBER 2016	
© 2016 DIGITALGLOBE NEXTVIEW LICENSE	
MAP FILE NAME: WH_20_UBI_20161024.MXD	

- NOTES:**
- ELEVATIONS ARE IN FEET AND REFER TO NOAA'S REPORTED MEAN LOWER LOW WATER (MLLW) RELATIVE TO THE 1983-2001 TIDAL EPOCH.
  - PROJECT SURVEYED WITH DISTRICT SURVEY VESSEL "SANDERSON" USING RTK GPS HORIZONTAL POSITIONING EQUIPMENT AND 28 KHZ SOUNDING EQUIPMENT.
  - HORIZONTAL DATUM NAD 1983. VERTICAL DATUM M.L.L.W..
  - TIDE GAGE LOCATED AT UPPER BIG ISLAND. USE OF TIDE VALUES FOR THIS GAGE ARE RESTRICTED TO QUALITY ASSURANCE PURPOSES FOR VERIFICATION OF RTK TIDES. THE WILMINGTON DISTRICT WILL ONLY USE STAFF GAGE TIDAL VALUES FOR FINAL MAPPING AND QUANTITY CALCULATIONS IF RTK GPS IS UNAVAILABLE AT THE TIME OF SURVEY.
  - THIS PROJECT WAS DESIGNED BY THE WILMINGTON DISTRICT OF THE U.S. ARMY CORPS OF ENGINEERS. THE INITIALS AND SIGNATURES AND REGISTRATION DESIGNATIONS OF INDIVIDUALS APPEAR ON THESE PROJECT DOCUMENTS WITHIN THE SCOPE OF THEIR EMPLOYMENT AS REQUIRED BY ER 1110-1-8152.
  - THE INFORMATION DEPICTED ON THIS SURVEY MAP REPRESENTS THE RESULTS OF SURVEYS MADE ON THE DATES INDICATED AND CAN ONLY BE CONSIDERED AS INDICATING THE GENERAL CONDITIONS EXISTING AT THAT TIME. THESE CONDITIONS ARE SUBJECT TO RAPID CHANGE DUE TO SHOALING EVENTS. A PRUDENT MARINER SHOULD NOT RELY EXCLUSIVELY ON THE INFORMATION PROVIDED HERE. REQUIRED BY 33 CFR 209.325
  - NAVIGATION AIDS LOCATED WITH DISTRICT SURVEY VESSEL, ACCURACY +/- 3 METERS.
  - FOR THE MOST UP TO DATE INFORMATION PLEASE CHECK OUR WEBSITE AT: [WWW.SAWUSACE.ARMY.MIL](http://WWW.SAWUSACE.ARMY.MIL)



**HYDROGRAPHIC SURVEY**  
U.S. ARMY ENGINEER DISTRICT  
CORPS OF ENGINEERS  
WILMINGTON, NORTH CAROLINA  
**WILMINGTON HARBOR**  
**UPPER BIG ISLAND**  
**CHANNEL**  
WILMINGTON, NORTH CAROLINA

34°8'0"N

34°8'30"N

77°56'30"W