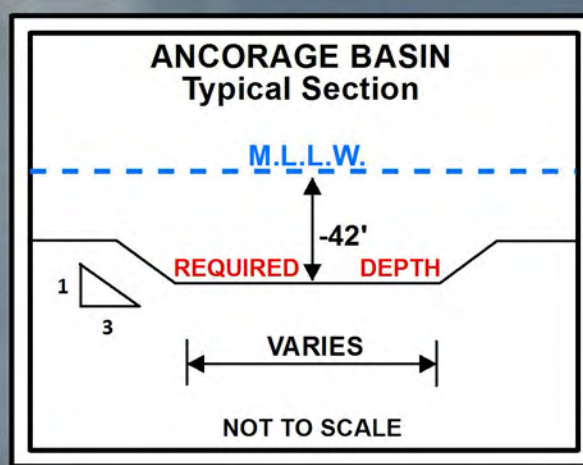


34°12'30"N

34°12'35"N

34°12'40"N

34°12'45"N



ANCHORAGE BASIN

VOPAK DOCK

VOPAK TIDE GAGE

BERTH 1

LEGEND

Aids to Navigation

- Can
- Nun
- Green Lighted Buoy
- Red Lighted Buoy
- Junction Marker
- Green Light
- Red Light
- Green Daybeacon
- Red Daybeacon
- Danger Sign
- Mileboard
- Tide Gage

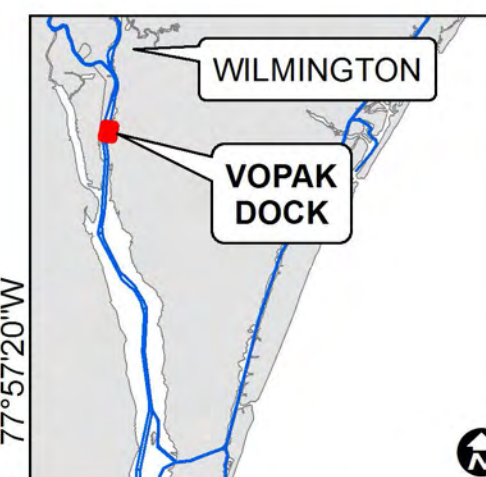
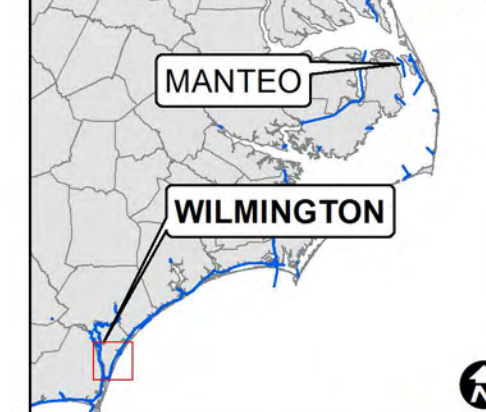
Depth In Feet

- 20 and Shallower
- 20 - 25
- 25 - 32
- 32 - 35
- 35 - 38
- 38 - 42
- 42 - 44
- 44 - 45
- 45 - 47
- 47 and Deeper
- Navigation Channel



US Army Corps of Engineers
Wilmington District

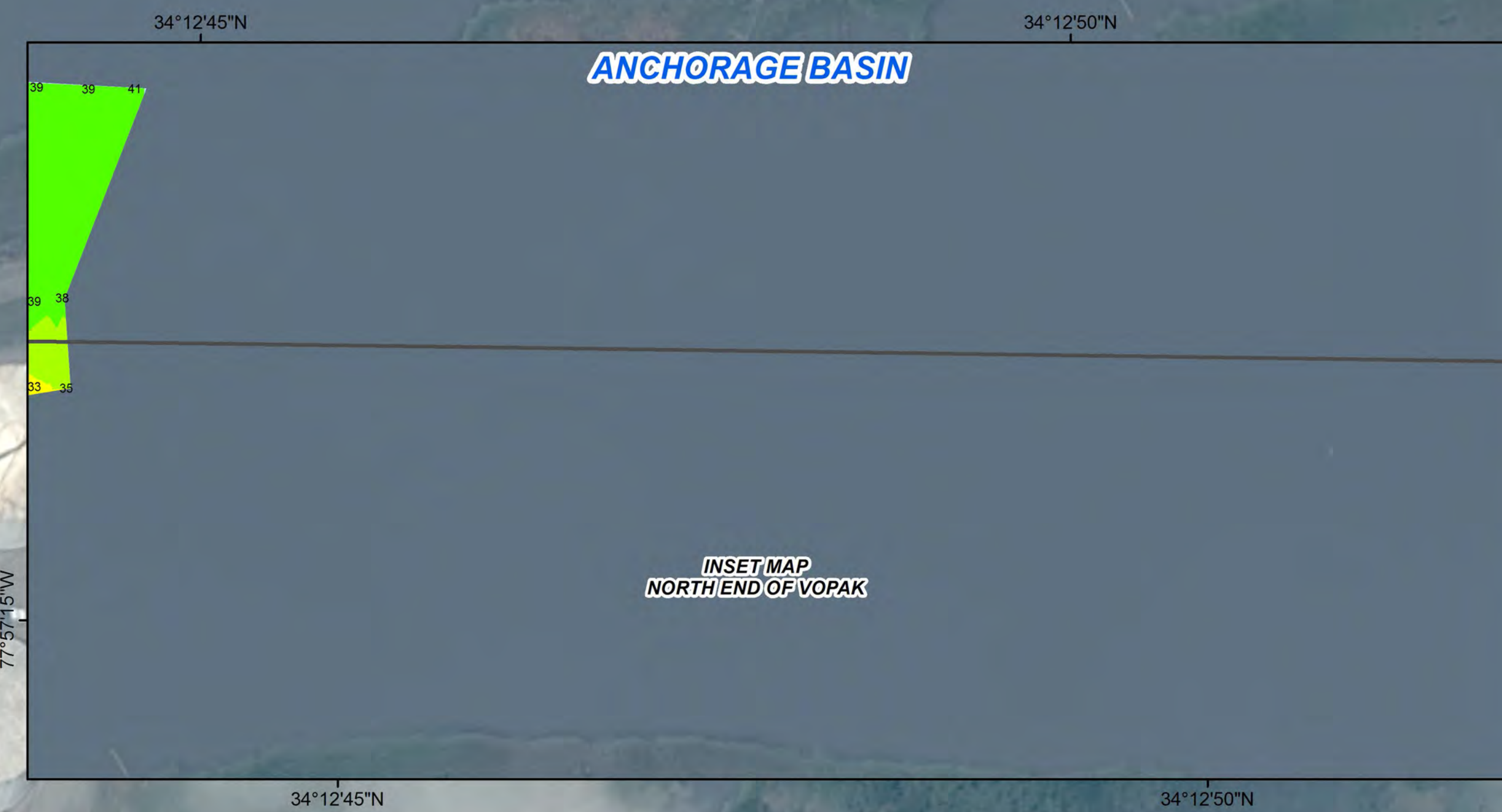
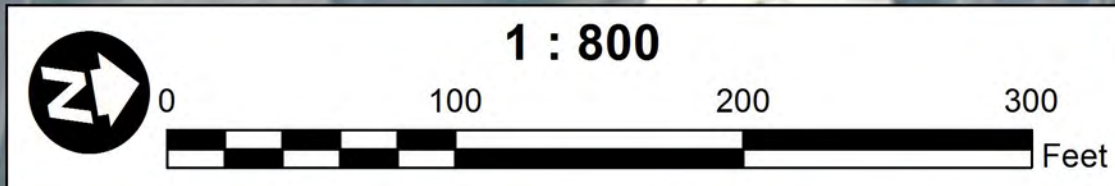
NORTH CAROLINA



SURVEY DATE: DECEMBER 14, 2015	SURVEYED BY: JBD, WJC
MAP DATE: DECEMBER 16, 2015	MAPPED BY: SGD
MAP SCALE: 1 : 800	
IMAGERY DATE: AUGUST 16, 2015	
© 2015 DIGITALGLOBE NEXTVIEW LICENSE	MAP FILE NAME: VOPAK_2015-12-14_AD.MXD

NOTES:

1. ELEVATIONS ARE IN FEET AND REFER TO NOAA'S REPORTED MEAN LOWER LOW WATER (MLLW) RELATIVE TO THE 1983-2001 TIDAL EPOCH.
2. PROJECT SURVEYED WITH DISTRICT SURVEY VESSEL "SANDERSON", USING RTK GPS HORIZONTAL POSITIONING EQUIPMENT AND 28 KHZ SOUNDING EQUIPMENT.
3. HORIZONTAL DATUM NAD 1983. VERTICAL DATUM M.L.L.W.
4. TIDE GAGE LOCATED AT: VOPAK.DOCK. USE OF TIDE VALUES FOR THIS GAGE ARE RESTRICTED TO QUALITY ASSURANCE PURPOSES FOR VERIFICATION OF RTK TIDES. THE WILMINGTON DISTRICT WILL ONLY USE STAFF GAGE TIDAL VALUES FOR FINAL MAPPING AND QUANTITY CALCULATIONS IF RTK GPS IS UNAVAILABLE AT THE TIME OF SURVEY.
5. THIS PROJECT WAS DESIGNED BY THE WILMINGTON DISTRICT OF THE U.S. ARMY CORPS OF ENGINEERS. THE INITIALS AND SIGNATURES AND REGISTRATION DESIGNATIONS OF INDIVIDUALS APPEAR ON THESE PROJECT DOCUMENTS WITHIN THE SCOPE OF THEIR EMPLOYMENT AS REQUIRED BY ER 1110-1-8152.
6. THE INFORMATION DEPICTED ON THIS SURVEY MAP REPRESENTS THE RESULTS OF SURVEYS MADE ON THE DATES INDICATED AND CAN ONLY BE CONSIDERED AS INDICATING THE GENERAL CONDITIONS EXISTING AT THAT TIME. THESE CONDITIONS ARE SUBJECT TO RAPID CHANGE DUE TO SHOALING EVENTS. A PRUDENT MARINER SHOULD NOT RELY EXCLUSIVELY ON THE INFORMATION PROVIDED HERE. REQUIRED BY 33 CFR 209.325
7. NAVIGATION AIDS LOCATED WITH DISTRICT SURVEY VESSEL, ACCURACY +/- 3 METERS.
8. FOR THE MOST UP TO DATE INFORMATION PLEASE CHECK OUR WEBSITE AT: WWW.SAW.USACE.ARMY.MIL



34°12'25"N

34°12'30"N

34°12'35"N

34°12'40"N

34°12'45"N

77°57'25"W

77°57'20"W

77°57'15"W

77°57'20"W

77°57'15"W

77°57'10"W

77°57'05"W

HYDROGRAPHIC SURVEY

U.S. ARMY ENGINEER DISTRICT
CORPS OF ENGINEERS
WILMINGTON, NORTH CAROLINA

VOPAK

WILMINGTON, NORTH CAROLINA