

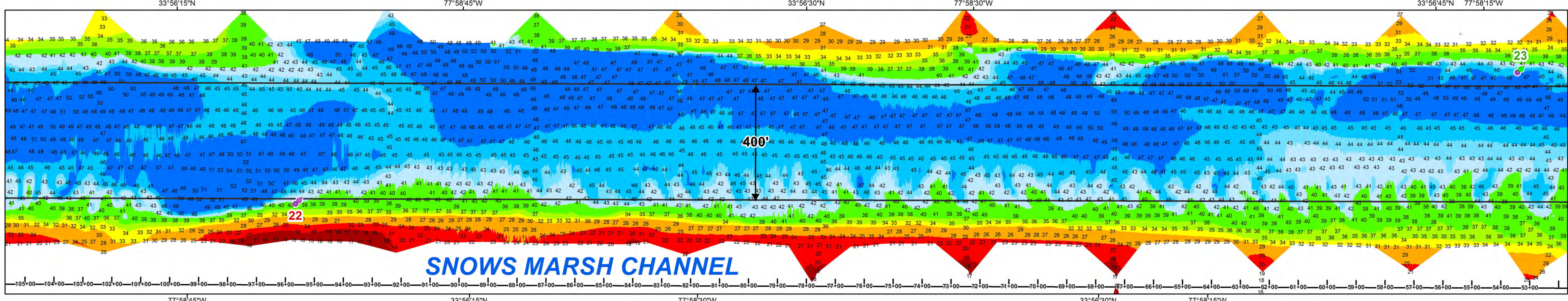
US Army Corps of Engineers
Wilmington District

NORTH CAROLINA
MOREHEAD CITY

WILMINGTON

WILMINGTON

SNOWS MARSH



- NOTES:**
- ELEVATIONS ARE IN FEET AND REFER TO NOAA'S REPORTED MEAN LOWER LOW WATER (MLLW) RELATIVE TO THE 1983-2001 TIDAL EPOCH.
 - PROJECT SURVEYED WITH DISTRICT SURVEY VESSEL "SWANT" USING RTK GPS HORIZONTAL POSITIONING EQUIPMENT AND 200KHZ SOUNDING EQUIPMENT.
 - HORIZONTAL DATUM NAD 1983. VERTICAL DATUM M.L.L.W.
 - TIDE GAGE LOCATED AT: HORSESHOE SHOAL. USE OF TIDE VALUES FOR THIS GAGE ARE RESTRICTED TO QUALITY ASSURANCE PURPOSES FOR VERIFICATION OF RTK TIDES. THE WILMINGTON DISTRICT WILL ONLY USE STAFF GAGE TIDE VALUES FOR FINAL MAPPING AND QUANTITY CALCULATIONS IF RTK GPS IS UNAVAILABLE AT THE TIME OF SURVEY.

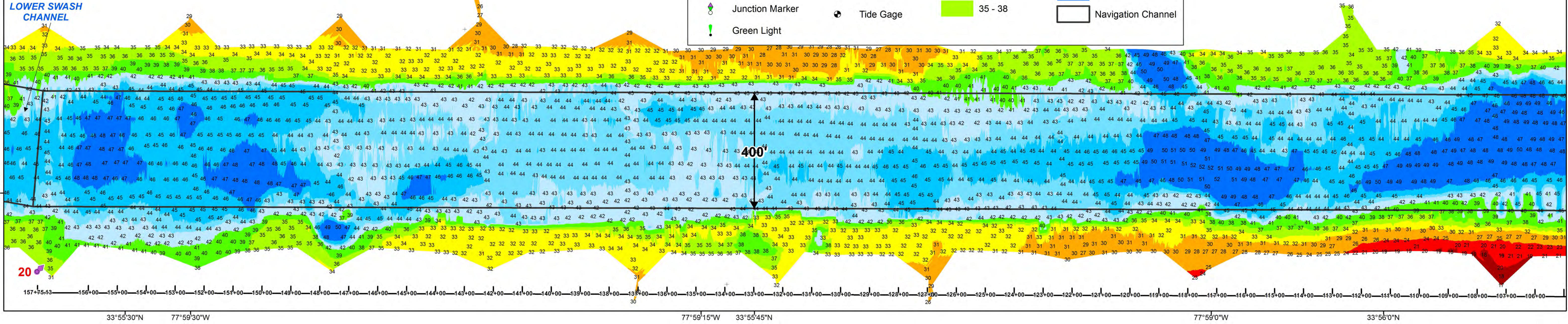
- THIS PROJECT WAS DESIGNED BY THE WILMINGTON DISTRICT OF THE U.S. ARMY CORPS OF ENGINEERS. THE INITIALS AND SIGNATURES AND REGISTRATION DESIGNATIONS OF INDIVIDUALS APPEAR ON THESE PROJECT DOCUMENTS WITHIN THE SCOPE OF THEIR EMPLOYMENT AS REQUIRED BY ER 1110-1-8152.
- THE INFORMATION DEPICTED ON THIS SURVEY MAP REPRESENTS THE RESULTS OF SURVEYS MADE ON THE DATES INDICATED AND CAN ONLY BE CONSIDERED AS INDICATING THE GENERAL CONDITIONS EXISTING AT THAT TIME. THESE CONDITIONS ARE SUBJECT TO RAPID CHANGE DUE TO SHOALING EVENTS. A PRUDENT MARINER SHOULD NOT RELY EXCLUSIVELY ON THE INFORMATION PROVIDED HERE. REQUIRED BY 33 CFR 209.325
- NAVIGATION AIDS LOCATED WITH DISTRICT SURVEY VESSEL. ACCURACY +/- 3 METERS.
- FOR THE MOST UP TO DATE INFORMATION PLEASE CHECK OUR WEBSITE AT: WWW.SAW.USACE.ARMY.MIL

LEGEND

SNOWS MARSH CHANNEL

Scale: 1:2,000

0 250 500 Feet



WILMINGTON DISTRICT

HYDROGRAPHIC SURVEY

U.S. ARMY CORPS OF ENGINEERS
WILMINGTON, NORTH CAROLINA
WILMINGTON HARBOR

SNOWS MARSH CHANNEL

SOUTHPORT, NORTH CAROLINA

SURVEY DATE: 26 SEPTEMBER 2016
MAP DATE: 30 SEPTEMBER 2016
MAP SCALE: 1:2,000

SURVEYED BY: MAS, WWW
MAPPED BY: K7PDPSSG
PROCESSED BY: K7OPNSMG
MAP FILE NAME: WH_10_SNO_20160926.MXD