



SR-010 – April 9, 2010

Lanyard attachment points. Scissor Lifts, Vertical Mast Lifts.

The guardrail system of the aerial platform provides fall protection for the occupants. There is no specific requirement within the ANSI A92.6-2006 and CSA B354.2-01 standards for the occupants to employ additional fall protection, except as directed by other authorities. Additional fall protection may be required by OSHA regulations or specific job site conditions.

As per the ANSI A92.6-2006 standard, "The guardrail system of the aerial platform provides fall protection. If occupant(s) of the platform are required to wear personal fall protection equipment (PFPE), occupants shall comply with instructions provided by the aerial platform manufacturer (remanufacturer) regarding anchorage(s)."

If additional fall protection is required, by an employer or the authority having jurisdiction, Skyjack recommends the use of a fall restraint system to keep an occupant within the confines of the platform, and thus not expose the occupant to any fall hazard requiring a fall arrest. All personal fall protection equipment must comply with applicable governmental regulations and must be inspected and used in accordance with the manufacturer's recommendations. All personal fall protection equipment must be attached only to approved anchorage points within the platform. **The guardrail system is not designed for this application, and must not be used as a lanyard attachment point.**

Additional fall protection attachment points may be installed as per drawing 113121, 122030, or 115569 (dependant on machine type) with the Safety D-Ring Kit, 125584 as supplied by Skyjack Inc.

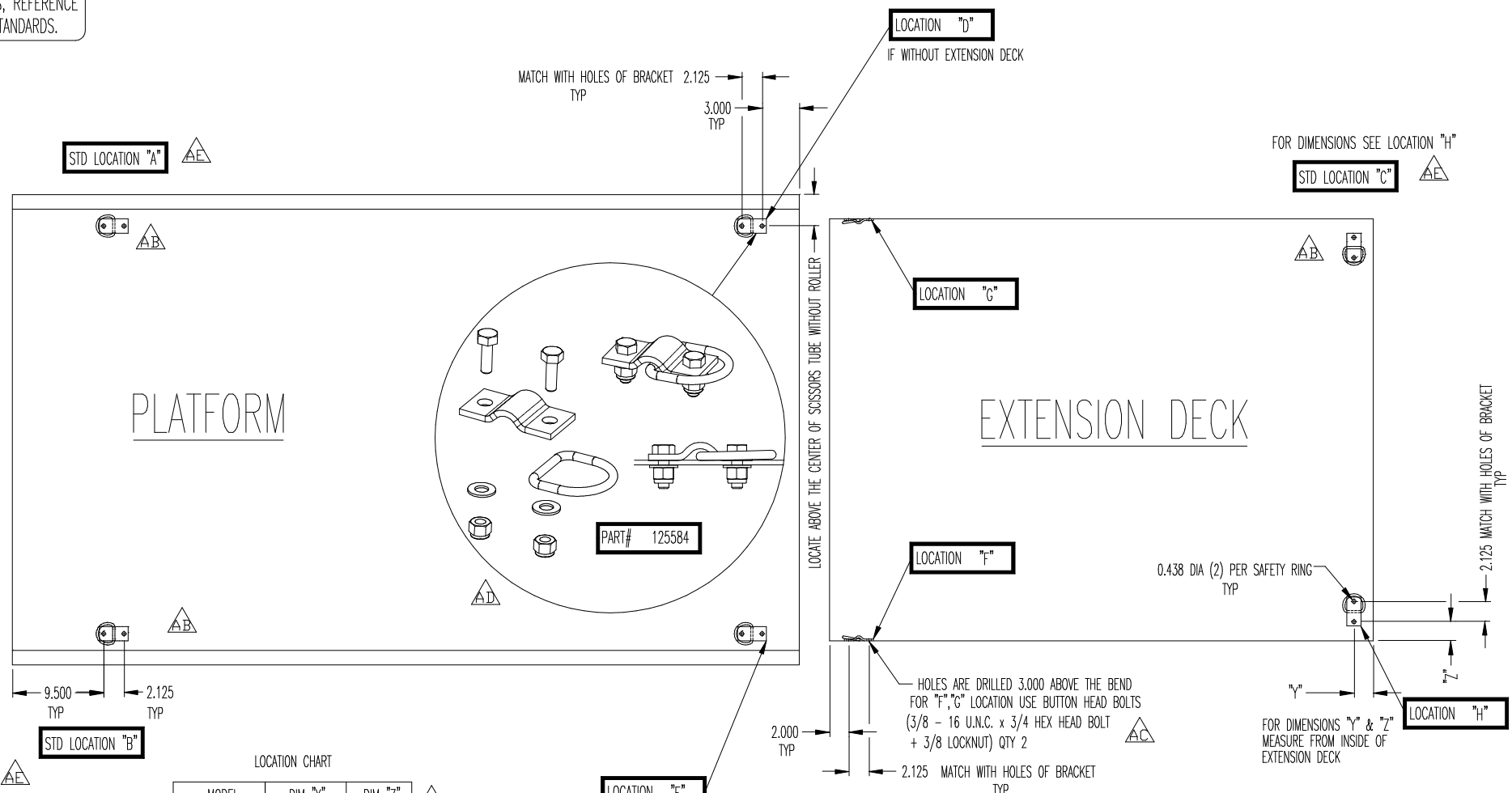
The components of the kit comply with both ANSI A92.6-2006 and CSA B354.2-01. The anchorage is capable of withstanding a static force of 5,000 lbs without reaching ultimate strength. As per the standards, this strength requirement applies only to the anchorage(s) and their attachment to the aerial platform. The aerial platform structure and stability margins are **not** designed for this force.

Best Regards,

Brad Boehler, P.Eng
Vice President, Engineering



FOR UNTOLERANCED DIMENSIONS, REFERENCE SKYJACK'S SHOP PRACTICE STANDARDS.



LOCATION CHART

MODEL	DIM "Y"	DIM "Z"
3015,3219,3220	1.563	2.000
4620/26, 4830	1.563	2.000
6826/32	1.563	2.000

HYDRAULIC EXTENSION DECK	MODEL	DIM "Y"	DIM "Z"
	3015,3219,3220	1.563	2.000
	4620/26, 4830	1.563	1.250
	6826/32	2.563	2.000

NUM	REVISION DESCRIPTION	DATE	INITIALS	PPI OR ECF
1A	RING LOCATION MOVED BACK 1" FOR NEW ROLL OUT	02/14/95	CD	PPI 162
1B	NEW D RING -PURCHASED PART	08/22/95	MC	NO PPI
1C	RING LOCATION MOVED BACK 0.500" AND FROM 1.000 TO 1.500	08/13/96	MC	PPI 282/ECCO 844
AB	STANDARD LOCATIONS REMOVED FROM DWG/DIMENSIONAL CHART ADDED	01/14/99	PN	1256
AC	LOCKNUT REPLACED NUT & WASHER	10/11/00	ES	1909
AD	INCLUDED SAFETY D-RING KIT PART NUMBER	06/03/03	MC	2622
AE	INCLUDED "00" MODELS	12/09/03	MC	2749

INSTALLATION

DRILL 2 HOLES 0.438 DIA FOR EACH D-RING ACCORDING TO LOCATION CHART.

SEE PART # 125584 (ONE IN THE CIRCLE) FOR INSTALLATION OF D-RING

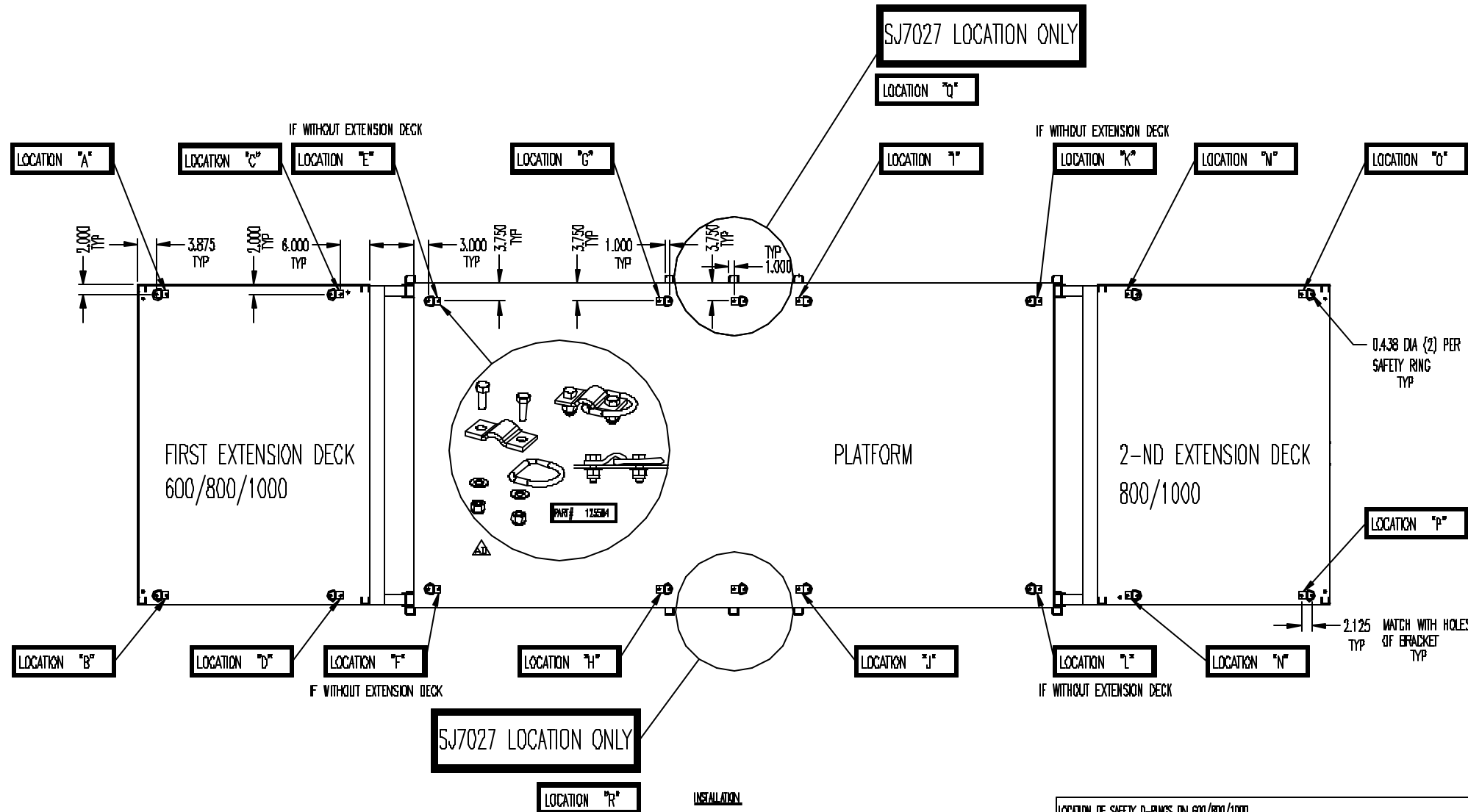
APPLY 30 lb-ft TORQUE TO INSTALLED BOLTS

FOR "00" MODELS USE SAME STD LOCATIONS. BEFORE DRILLING CHECK FOR INTERFERENCE WITH CROSS TUBES FOR CLEARANCE.

OPTIONAL LOCATIONS FOR SAFETY D-RINGS -SJM/SJII/00 MACHINES		WEIGHT
ASSEMBLY NAME		
SKYJACK		
Criticalness rating 3	Initial ECO# N/A	SKYJACK INC. , 55 Campbell Road , GUELPH , Ontario , N1H-1B9
File C:\15\win\2749	Checked by	113121AE
Drawn by MARK CHOMINIEC	Date 12/09/03 Time 10:29	

FOR UNTOLERANCED DIMENSIONS, REFERENCE SKYJACK'S SHOP PRACTICE STANDARDS.

115569



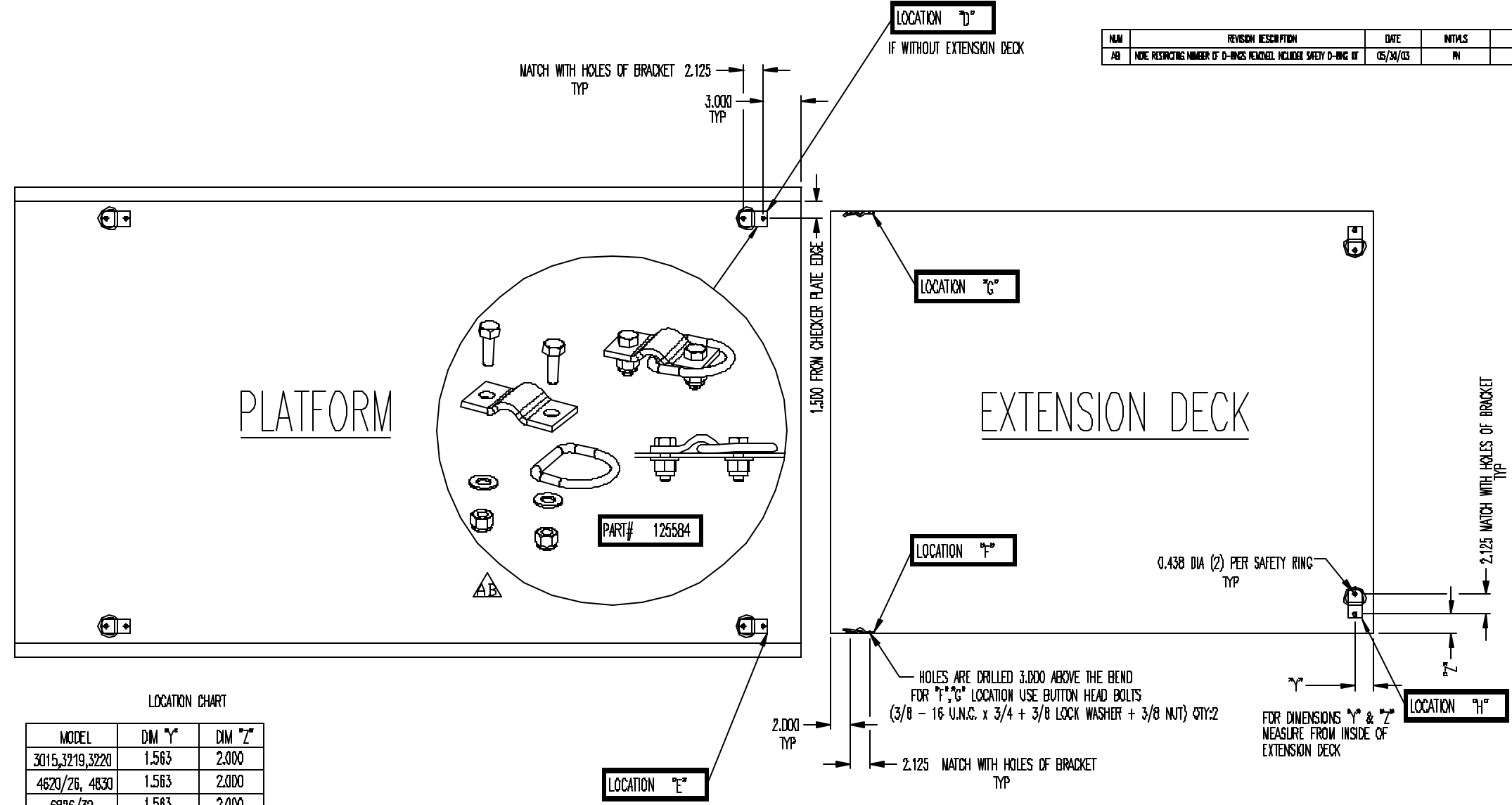
INSTALLATION
 DRILL 2 HOLES 0.438 DIA FOR EACH D-RING ACCORDING TO LOCATION.
 SEE PART # 125284 (ONE IN THE CIRCLE) FOR INSTALLATION OF D-RING.
 APPLY 30 lb-ft TORQUE TO INSTALLED BOLTS.

LOCATION OF SAFETY D-RINGS ON 600/800/1000		
ASSEMBLY NAME		
SKYJACK		
DIFFERENCE NO. 3	REVISION N/A	SKYJACK INC., 55 Campbell Road, DELPHI, Ontario, M1H-1E9
File #	Checked by	115569AD
Drawn by MARK CHOMINIEC	Date 06/11/03 Time 16:25	

ORIGINAL

FOR UNTOLERANCED DIMENSIONS, REFERENCE SKYJACK'S SHOP PRACTICE STANDARDS.

NUM	REVISION DESCRIPTION	DATE	INITIALS	EDD #
AB	NOTE RESPECTING NUMBER OF D-RINGS REMOVED. INCLUDE SAFETY D-RING IF	05/24/03	PH	2822



LOCATION CHART

HYDRAULIC EXTENSION DECK	MODEL	DIM "Y"	DIM "Z"
		3015, 3219, 3220	1.563
	4620/26, 4830	1.563	2.000
	6826/32	1.563	2.000
	3015, 3219, 3220	1.563	2.000
	4620/26, 4830	1.563	2.000
	6826/32	2.563	2.000

INSTALLATION

DRILL 2 HOLES 0.438 DIA FOR EACH D-RING ACCORDING TO LOCATION CHART.

SEE PART # 125584 (ONE IN THE CIRCLE) FOR INSTALLATION OF D-RING

APPLY 30 lb-ft TORQUE TO INSTALLED BOLTS

OPTIONAL LOCATIONS FOR SAFETY D-RINGS - SM1 MACHINES		ASSEMBLY NAME	VERSION
Checked by	3	MARK CHOMINIEC	1307
File name	Checked by	SKYJACK INC., 56 Campbell Road, DELPHI, Ontario, M1H-1E9	
Drawn by MARK CHOMINIEC	Date 06/11/03	Time 16:24	Part No 122030AB