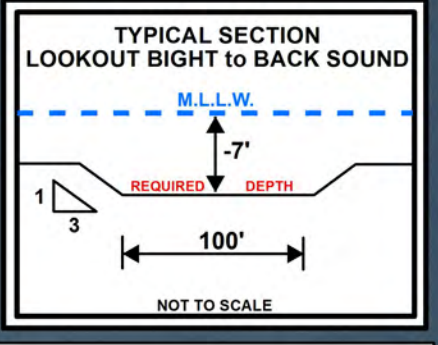


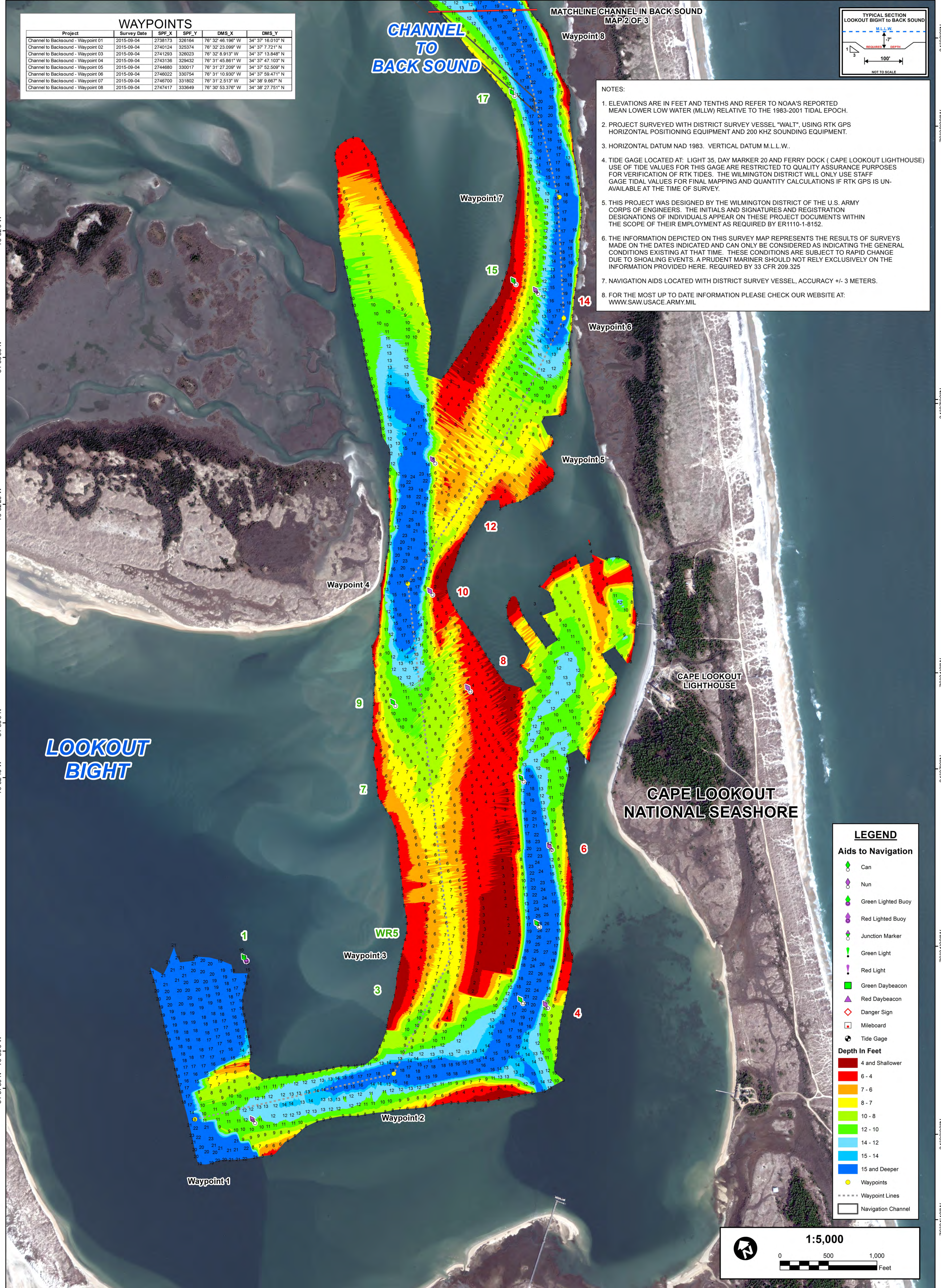
WAYPOINTS					
Project	Survey Date	SPP_X	SPP_Y	DMS_X	DMS_Y
Channel to Backsound - Waypoint 01	2015-09-04	2738173	3281664	76° 32' 46.196" W	34° 37' 18.010" N
Channel to Backsound - Waypoint 02	2015-09-04	2740124	325374	76° 32' 23.099" W	34° 37' 7.721" N
Channel to Backsound - Waypoint 03	2015-09-04	2741293	328023	76° 32' 6.913" W	34° 37' 13.848" N
Channel to Backsound - Waypoint 04	2015-09-04	2743136	329432	76° 31' 45.861" W	34° 37' 47.103" N
Channel to Backsound - Waypoint 05	2015-09-04	2744680	330017	76° 31' 27.209" W	34° 37' 52.509" N
Channel to Backsound - Waypoint 06	2015-09-04	2746022	330754	76° 31' 10.930" W	34° 37' 59.471" N
Channel to Backsound - Waypoint 07	2015-09-04	2746700	331802	76° 31' 2.513" W	34° 38' 9.667" N
Channel to Backsound - Waypoint 08	2015-09-04	2747417	333649	76° 30' 53.376" W	34° 38' 27.751" N

CHANNEL TO BACK SOUND

MATCHLINE CHANNEL IN BACK SOUND
MAP 2 OF 3



- NOTES:
- ELEVATIONS ARE IN FEET AND TENTHS AND REFER TO NOAA'S REPORTED MEAN LOWER LOW WATER (MLLW) RELATIVE TO THE 1983-2001 TIDAL EPOCH.
 - PROJECT SURVEYED WITH DISTRICT SURVEY VESSEL "WALT", USING RTK GPS HORIZONTAL POSITIONING EQUIPMENT AND 200 KHZ SOUNDING EQUIPMENT.
 - HORIZONTAL DATUM NAD 1983. VERTICAL DATUM M.L.L.W.
 - TIDE GAGE LOCATED AT: LIGHT 35, DAY MARKER 20 AND FERRY DOCK (CAPE LOOKOUT LIGHTHOUSE) USE OF TIDE VALUES FOR THIS GAGE ARE RESTRICTED TO QUALITY ASSURANCE PURPOSES FOR VERIFICATION OF RTK TIDES. THE WILMINGTON DISTRICT WILL ONLY USE STAFF GAGE TIDAL VALUES FOR FINAL MAPPING AND QUANTITY CALCULATIONS IF RTK GPS IS UNAVAILABLE AT THE TIME OF SURVEY.
 - THIS PROJECT WAS DESIGNED BY THE WILMINGTON DISTRICT OF THE U.S. ARMY CORPS OF ENGINEERS. THE INITIALS AND SIGNATURES AND REGISTRATION DESIGNATIONS OF INDIVIDUALS APPEAR ON THESE PROJECT DOCUMENTS WITHIN THE SCOPE OF THEIR EMPLOYMENT AS REQUIRED BY ER1110-1-8152.
 - THE INFORMATION DEPICTED ON THIS SURVEY MAP REPRESENTS THE RESULTS OF SURVEYS MADE ON THE DATES INDICATED AND CAN ONLY BE CONSIDERED AS INDICATING THE GENERAL CONDITIONS EXISTING AT THAT TIME. THESE CONDITIONS ARE SUBJECT TO RAPID CHANGE DUE TO SHOALING EVENTS. A PRUDENT MARINER SHOULD NOT RELY EXCLUSIVELY ON THE INFORMATION PROVIDED HERE. REQUIRED BY 33 CFR 209.325
 - NAVIGATION AIDS LOCATED WITH DISTRICT SURVEY VESSEL. ACCURACY +/- 3 METERS.
 - FOR THE MOST UP TO DATE INFORMATION PLEASE CHECK OUR WEBSITE AT: WWW.SAW.USACE.ARMY.MIL



LEGEND

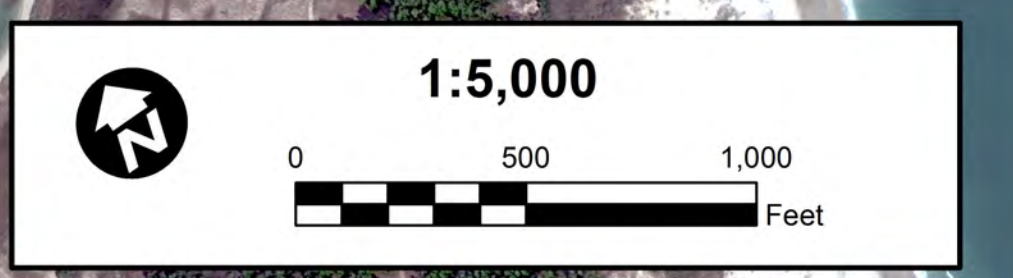
Aids to Navigation

- Can
- Nun
- Green Lighted Buoy
- Red Lighted Buoy
- Junction Marker
- Green Light
- Red Light
- Green Daybeacon
- Red Daybeacon
- Danger Sign
- Mileboard
- Tide Gage

Depth In Feet

- 4 and Shallower
- 6 - 4
- 7 - 6
- 8 - 7
- 10 - 8
- 12 - 10
- 14 - 12
- 15 - 14
- 15 and Deeper

Waypoints
Waypoint Lines
Navigation Channel



HYDROGRAPHIC SURVEY

U.S. ARMY ENGINEER DISTRICT
CORPS OF ENGINEERS
WILMINGTON, NORTH CAROLINA

Channel to Lookout Bight
Map 3 of 3

CAPE LOOKOUT, NORTH CAROLINA

SURVEY DATE(S): SEPTEMBER 4 & 8-10, 2015	SURVEYED BY: CRP, JBG
MAP DATE: SEPTEMBER 11, 2015	MAPPED BY: SMG
SCALE: 1:5,000	
IMAGERY DATE: DECEMBER 14, 2014	
© 2014 DIGITALGLOBE NEXTVIEW LICENSE	MAP FILE NAME: BARDEN_INLET_2015-09-04-10CS.MXD

