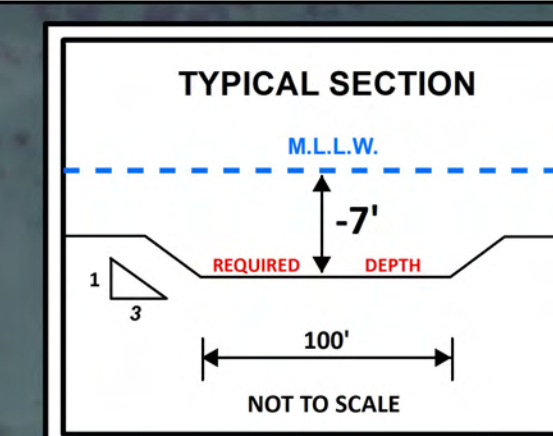
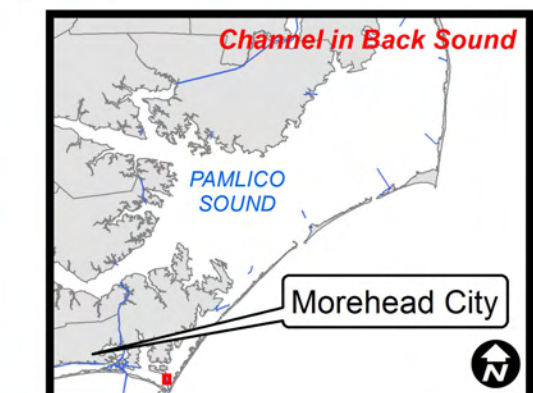
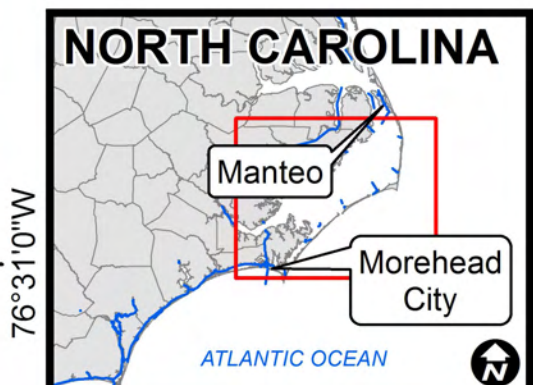
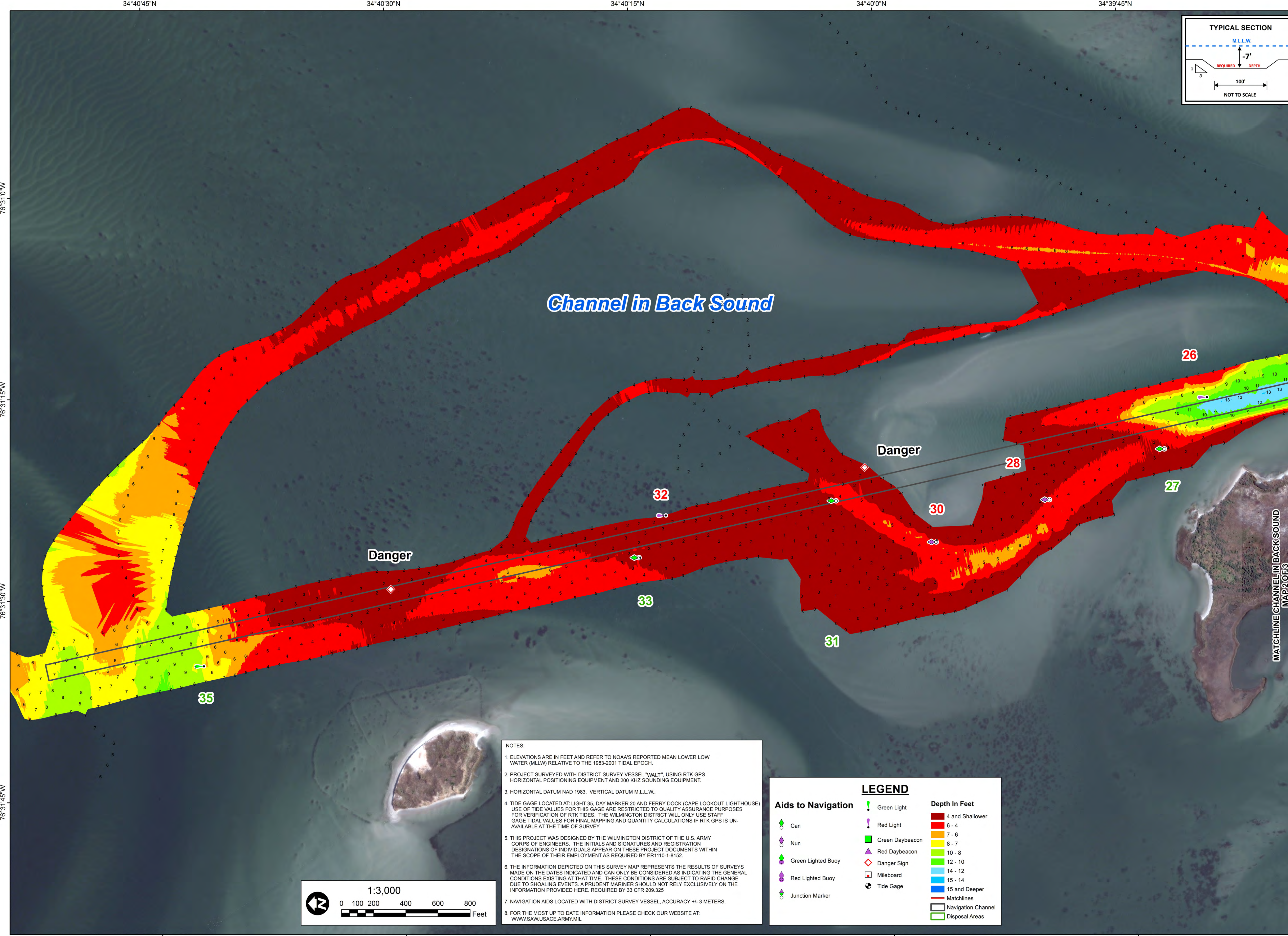




US Army Corps of Engineers
Wilmington District



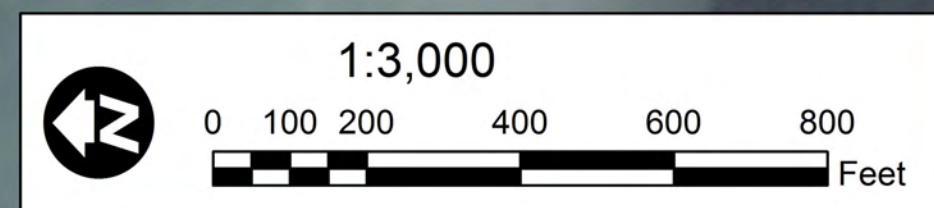
Channel in Back Sound



SURVEY DATE: SEPTEMBER 4 & 8-10, 2015	SURVEYED BY: CRP, JBG
MAP DATE: 14 SEPTEMBER 2015	MAPPED: K70FNMSG
MAP SCALE: 1:3,000	
IMAGERY DATE: DECEMBER 14, 2014	
© 2014 DIGITALGLOBE NEXTVIEW LICENSE	MAP FILE NAME: SH_12_CBS_20150904_2.MXD

NOTES:

- ELEVATIONS ARE IN FEET AND REFER TO NOAA'S REPORTED MEAN LOWER LOW WATER (MLLW) RELATIVE TO THE 1983-2001 TIDAL EPOCH.
- PROJECT SURVEYED WITH DISTRICT SURVEY VESSEL "WALT", USING RTK GPS HORIZONTAL POSITIONING EQUIPMENT AND 200 KHZ SOUNDING EQUIPMENT.
- HORIZONTAL DATUM NAD 1983. VERTICAL DATUM M.L.L.W.
- TIDE GAGE LOCATED AT: LIGHT 35, DAY MARKER 20 AND FERRY DOCK (CAPE LOOKOUT LIGHTHOUSE) USE OF TIDE VALUES FOR THIS GAGE ARE RESTRICTED TO QUALITY ASSURANCE PURPOSES FOR VERIFICATION OF RTK TIDES. THE WILMINGTON DISTRICT WILL ONLY USE STAFF GAGE TIDAL VALUES FOR FINAL MAPPING AND QUANTITY CALCULATIONS IF RTK GPS IS UNAVAILABLE AT THE TIME OF SURVEY.
- THIS PROJECT WAS DESIGNED BY THE WILMINGTON DISTRICT OF THE U.S. ARMY CORPS OF ENGINEERS. THE INITIALS AND SIGNATURES AND REGISTRATION DESIGNATIONS OF INDIVIDUALS APPEAR ON THESE PROJECT DOCUMENTS WITHIN THE SCOPE OF THEIR EMPLOYMENT AS REQUIRED BY ER1110-1-8152.
- THE INFORMATION DEPICTED ON THIS SURVEY MAP REPRESENTS THE RESULTS OF SURVEYS MADE ON THE DATES INDICATED AND CAN ONLY BE CONSIDERED AS INDICATING THE GENERAL CONDITIONS EXISTING AT THAT TIME. THESE CONDITIONS ARE SUBJECT TO RAPID CHANGE DUE TO SHOALING EVENTS. A PRUDENT MARINER SHOULD NOT RELY EXCLUSIVELY ON THE INFORMATION PROVIDED HERE. REQUIRED BY 33 CFR 209.325
- NAVIGATION AIDS LOCATED WITH DISTRICT SURVEY VESSEL, ACCURACY +/- 3 METERS.
- FOR THE MOST UP TO DATE INFORMATION PLEASE CHECK OUR WEBSITE AT: WWW.SAW.USACE.ARMY.MIL



Aids to Navigation		LEGEND	
	Green Light		Red Light
	Green Daybeacon		Red Daybeacon
	Green Lighted Buoy		Danger Sign
	Red Lighted Buoy		Mileboard
	Junction Marker		Tide Gage
			Matchlines
			Navigation Channel
			Disposal Areas

Depth In Feet	
	4 and Shallower
	6 - 4
	7 - 6
	8 - 7
	10 - 8
	12 - 10
	14 - 12
	15 - 14
	15 and Deeper

HYDROGRAPHIC SURVEY
U.S. ARMY ENGINEER DISTRICT
CORPS OF ENGINEERS
WILMINGTON, NORTH CAROLINA

Channel in Back Sound
Map 1 of 3
HARRERS ISLAND, NORTH CAROLINA