



EIE EXPRESS

The Monthly eNewsletter for USACE Europe District's *Engineering in Europe* Magazine

Issue 60, November 2014

AROUND EUROPE

SHAPE celebrates opening of US schools



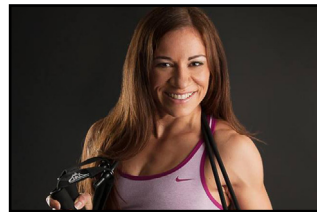
MONS, Belgium – The bell rang and classes opened for the start of a new school year back in August. Earlier this month, the SHAPE community marked the beginning of a new era.

Top military and civilian leaders from Supreme Headquarters Allied Powers Europe, the Department of Defense Education Activity and U.S. Army Corps of Engineers officially dedicated the U.S. sections during a ribbon-cutting ceremony Nov. 17 at SHAPE International School.

[... Read More](#)

Security assistant wins figure competition

WIESBADEN, Germany – In a sparkly pink bikini and Cinderella-like high heels, Carmen Diaz-Ortiz walked onstage, under bright lights, and presented her physique to a panel of figure competition judges.



A self-described shy woman, Diaz-Ortiz never planned to enter a fitness competition. But last month, she competed in, and won, the figure category at her first show, the Fitness Universe Europe Championships in Barcelona, Spain.

[... Read More](#)

Work begins on Landstuhl replacement



RHINE ORDNANCE BARRACKS, Germany – The last time ground was broken for a major military medical center in Europe was 1951, when Germany and other nations were still recovering from the devastation of World War II.

About 63 years later, and eight miles away, Lt. Gen. Donald Campbell Jr., then-U.S. Army Europe commanding general, performed the same rite of passage alongside U.S. and German dignitaries, breaking ground Oct. 24 as construction began on the Rhine Ordnance Barracks Medical Center Replacement.

[... Read More](#)

Commander's Corner

The importance of partnership



What a fortuitous time to write about **partnership** as I complete the columns covering my four P's – passion, presence, perseverance and partnership. It's fortuitous because I recently spent four days hosting the Chief of Engineers, Lt. Gen. Thomas Bostick, and Brig. Gen. Kent Savre, our North Atlantic Division commanding general, as we met with some of our most strategic partners operating in Europe and Africa. During every engagement, I witnessed partnering at the highest level and saw how seemingly difficult situations were skillfully handled. Their efforts ensured strong relationships were maintained for the mission's greater good and success of the U.S. government and our closest allies.

Partnership among the many stakeholders with whom we work is absolutely critical. In order to be successful, the nature of our business demands that we forge a sense of partnership and teamwork, even when personnel represent offices or organizations with different interests. I challenge everyone to learn, use and continuously grow the critical skills essential to promoting strong cooperation and collaboration within and outside our offices.

Although partnership and teamwork are important throughout most aspects of our lives, I mainly will address them in our work environment. At the end of the day, our Europe District team must focus on what Congress and the American people have charged us to do. We must not allow demanding or, even at times, difficult partners and stakeholders to jeopardize mission success; rather, we must strive to mend relationships when damage occurs and allow our own professionalism to carry the day.

For district employees, exceptional technical competence and strong communication skills are equally important and essential to strong partnerships. I try to follow a simple rule: "Talk to people and not about people." Think about that statement. Oftentimes, we talk about our differences or views of someone else with others but fail to have a professional conversation directly with the individual or group where we believe the issue exists.

In closing, I'm reminded of Brig. Gen. Savre's priorities for the division – "Mission First, People Always, Team of Teams." It's "Team of Teams" that I think best captures the essence of partnering. To gain success, organizations and people must be able to partner in beneficial ways. We must be able to build an effective "Team of Teams."

Army Strong ... Building Strong!
COL Matt Tyler

Congratulations to our recent Heroes of the District: Greg Bishop and Dobrita Nezer.

SPOTLIGHT on Romania MDA Resident Office



Europe District and Missile Defense Branch leaders take part in a “topping out” ceremony Oct. 29 for the Aegis Ashore Missile Defense Complex at Deveselu Air Base, Romania. From left: Rob Eldred, Chris Bailey, Tim Hess, Bob Kreienheder, Donna Street, Pete Debski, Rick Winegardner, Rachael Raposa, Rich Byrd, Rich Newton, Paul Cheverie, Dan Kein, Col. Matthew Tyler, Sandy Higgins, Cherri Burch, Shaun Frost, Gregg Takamura and Eric Valentine.

The Romania Missile Defense Agency Resident Office, comprised of 17 U.S. Army Corps of Engineers employees and eight Romanian contractors, is located at Deveselu Air Base, Romania, in a rural community about 2 1/2 hours from Bucharest, the nation’s capital. In the past year, the team has tripled in size to meet an ever-increasing workload for the Aegis Ashore Missile Defense Complex.

Work on the Navy support facilities also is moving along rapidly, with construction underway on a housing and dining facility, warehouse and base operation support contractor building.

“Being a part of this project has vastly broadened my view of what USACE and its dedicated employees are capable of,” said project engineer Mat Andersen. “Having the opportunity to live and work in Romania, and work with some exceptional people, is a once-in-a-lifetime experience.”

Progress is being made on the MDA facility. On Nov. 17, top officials from the U.S., Romania, Poland, Turkey and NATO took part in a mast-stepping ceremony at the site. The event is a Navy tradition that signifies the process of finalizing construction on a ship and its commissioning. It’s custom to place symbolic objects at the main mast’s base for good luck.

Europe District is managing the \$134 million project. KBR Inc. was awarded the contract in July 2013 to cover all construction, security fencing and storage, infrastructure maintenance and support services for Aegis Ashore. SC Glacial PROD SRL, a Romanian contractor, had constructed \$3.3 million in temporary facilities on the base, including offices, container housing units, a warehouse and vehicle inspection area. Zafer Construction, a Turkish contractor, received a \$32 million contract this past June to build the adjoining Navy support facilities.

“The work is extremely challenging because there are so many different stakeholders with a vested interest,” said Cherri Burch, a project scheduler. “Also, there are multiple contractors with interwoven schedules, [which provides] a level of complexity not normally seen. It is wonderful to see so many different teams working together toward completing this important mission. I am thankful for this experience.”

Deveselu sits near a farming community. Burch says everyone enjoys going to the local farmers market to buy produce. Recently, an 8-pound cabbage was purchased for 3 RON, which equates to 84 cents.

Despite a demanding construction tempo, the team embraces every opportunity to immerse itself in Romanian culture. On weekends, various members travel to Bucharest for different festivals or Brasov, home of Bran’s Castle, to see the Transylvania region.

The Aegis Ashore complex is scheduled to be operational by the end of 2015.

WORK WITH USACE

MATOC contracts
Estonia, Latvia, Lithuania
Solicitation number:
W912GB-15-R-0005

Force-protection equipment
U.S. facilities in Germany
Solicitation number:
W912GB-15-R-0006

MATOC task orders, services
Throughout Turkey
Solicitation number:
W912GB-15-R-0008

Click announcement or visit FBO.gov for more solicitations.

NAU in the News

- Stars and Stripes, Officials break ground on hospital to replace Landstuhl — article
- U.S. Army Garrison Rheinland-Pfalz, New barracks mean home to Soldiers — photos and article
- ERMIC Public Affairs, Public Health Command Region-Europe dedicates renovated labs — photos

Are you following us?



Click the icon and become a fan today!

DISTRICT PEOPLE



Leaving for Liberia

DISTRICT PARTNERS



Hospital groundbreaking

DISTRICT PROJECTS



Last beam goes up in Romania

AROUND THE CORPS

As Afghanistan drawdown continues, USACE consolidates to maintain support

[... Read More](#) 

Warrior Games provide outlet for wounded veteran athletes

[... Read More](#) 

AROUND THE ARMY

Soldiers back from Liberia completing controlled monitoring

[... Read More](#) 

Long-term TDY rates change to save Army \$9 million annually

[... Read More](#) 

AROUND THE DOD

Hagel: 'I did not make this decision lightly'

[... Read More](#) 

Eastern Europe troop rotations could continue, commander says

[... Read More](#) 

WATCH: A look inside US Ebola facility in Monrovia

Operations Security

Recognizing signs of potential workplace violence

An active shooter may be a current or former employee. Alert your Human Resources Office if you believe an employee exhibits potentially violent behavior. Indicators of potentially violent behavior may include one or more of the following:

- Increased use of alcohol and or illegal drugs
- Unexplained increase in absenteeism, and or vague physical complaints
- Depression or withdrawal
- Increased severe mood swings and noticeably unstable or emotional responses
- Increasingly talks of problems at home
- Increase in unsolicited comments about violence, firearms, and other dangerous weapons and violent crimes

Be prepared: An insider threat or active-shooter scenario similar to what happened at Fort Hood, Texas, and the Washington Naval Yard could occur anywhere. Know what the plans and procedures for your workplace are in case of a similar event.

For more information about indicators or protective measures, contact Otis Hawes, a U.S. Army Corps of Engineers Europe District security specialist, at otis.hawes@usace.army.mil or DSN 570-2633.

Comments? Corrections?

Contact the Europe District Public Affairs Office at:

dll-cenau-pa@usace.army.mil

U.S. Army Corps of Engineers Europe District

Attn: Public Affairs

CMR 410 Box 1, APO AE 09049-0001

Miss an edition?

Visit the EIE Express Archive



The EIE Express is an unofficial publication of U.S. Army Corps of Engineers Europe District, authorized under the provisions of AR 360-1. The editorial views and opinions expressed, as well as others within external links, are not necessarily those of the U.S. Army Corps of Engineers or Department of the Army. Engineering in Europe is a command information publication of U.S. Army Corps of Engineers Europe District.

Commander COL. MATTHEW R. TYLER
Deputy Commander LT. COL. ANDY HEMPHILL
Public Affairs Chief BRIAN TEMPLE
Editor VINCE LITTLE
Staff Contributor JENNIFER ALDRIDGE