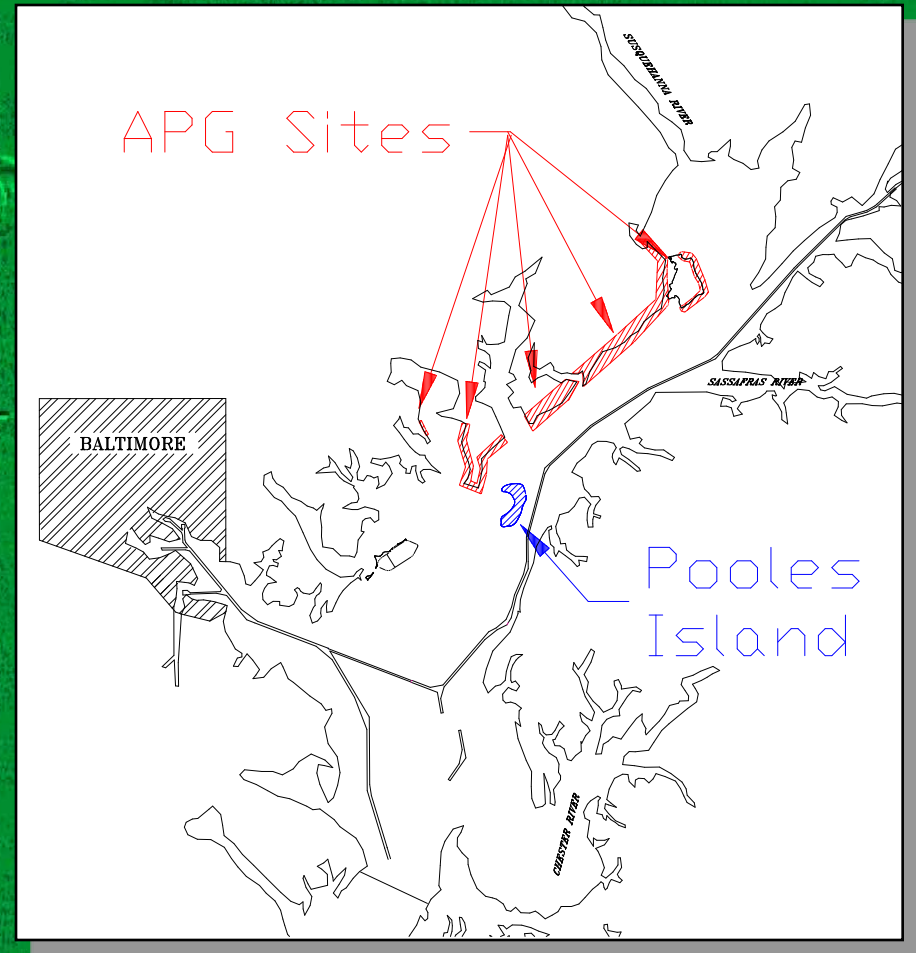


What about Aberdeen Proving Ground?



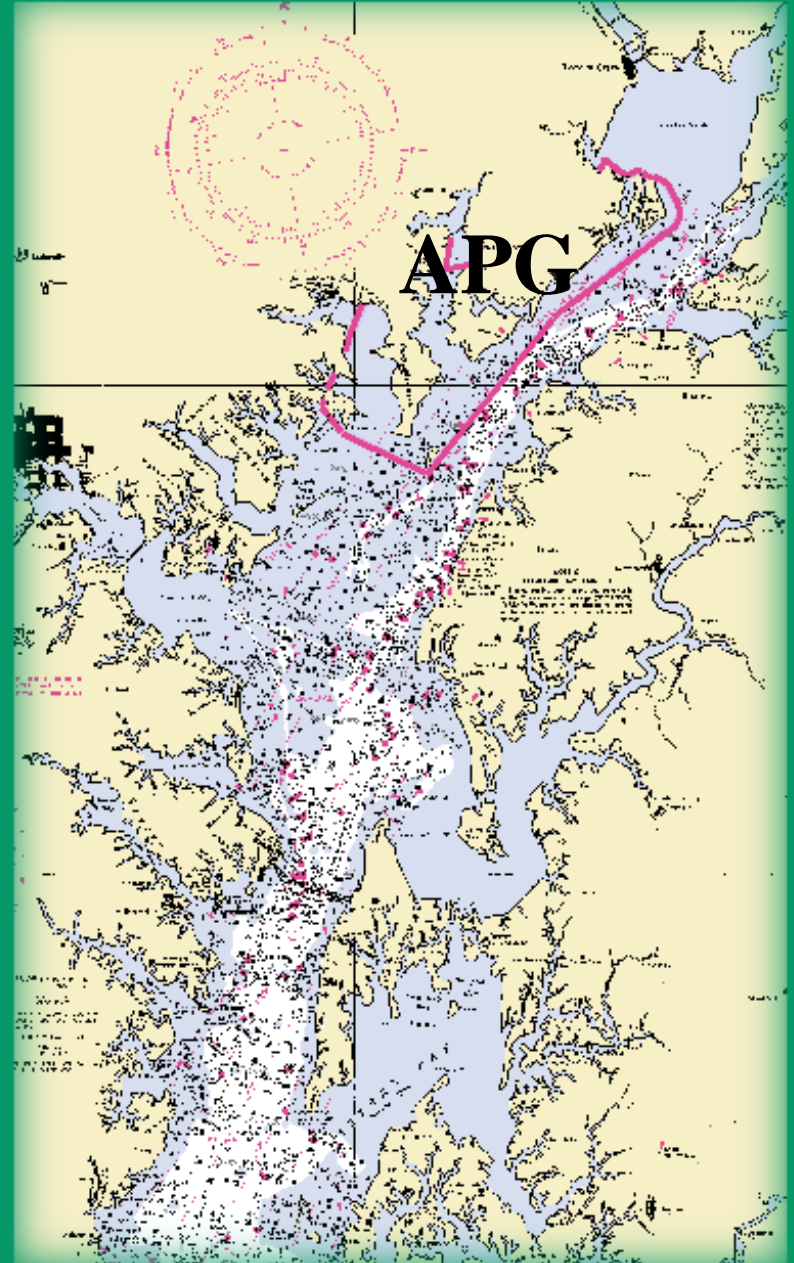
What is APG?

- federal property bordering Bay
- active military base
- garrison + 56 major tenants
- extensive military activities
- many “classified” missions
- military research center



Why is APG of Interest?

- *Near Upper Bay Shipping Channels*
- *Covers much of western shoreline*



APG Features

- total acreage: approx 72,000
- open water: 40,000 acres
- wetlands: 15,000 acres
- upland area: 17,000 acres of terrestrial habitat (including 23 eagles nests) and developed areas

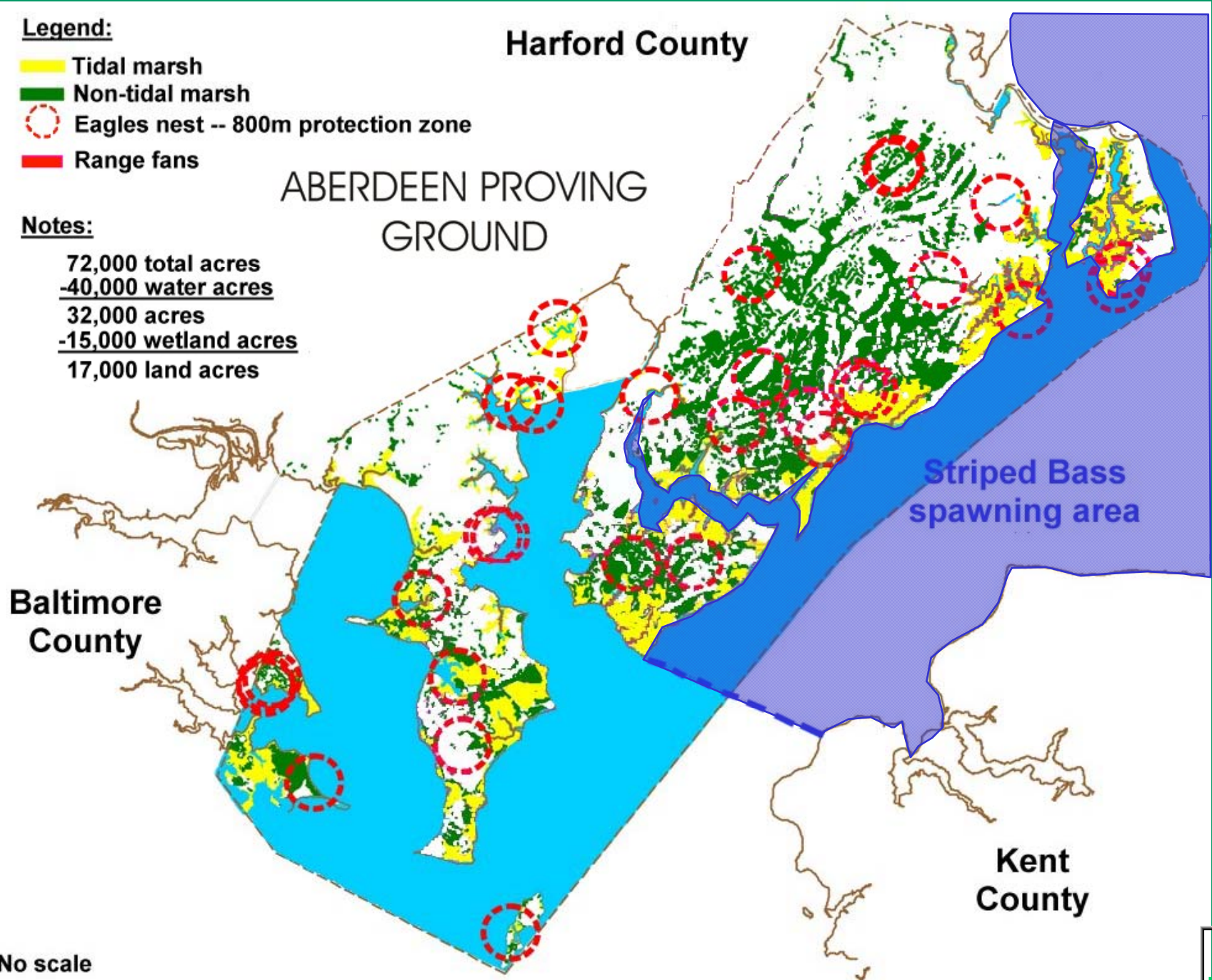


Legend:

-  Tidal marsh
-  Non-tidal marsh
-  Eagles nest -- 800m protection zone
-  Range fans

Notes:

72,000 total acres
-40,000 water acres
32,000 acres
-15,000 wetland acres
17,000 land acres



No scale

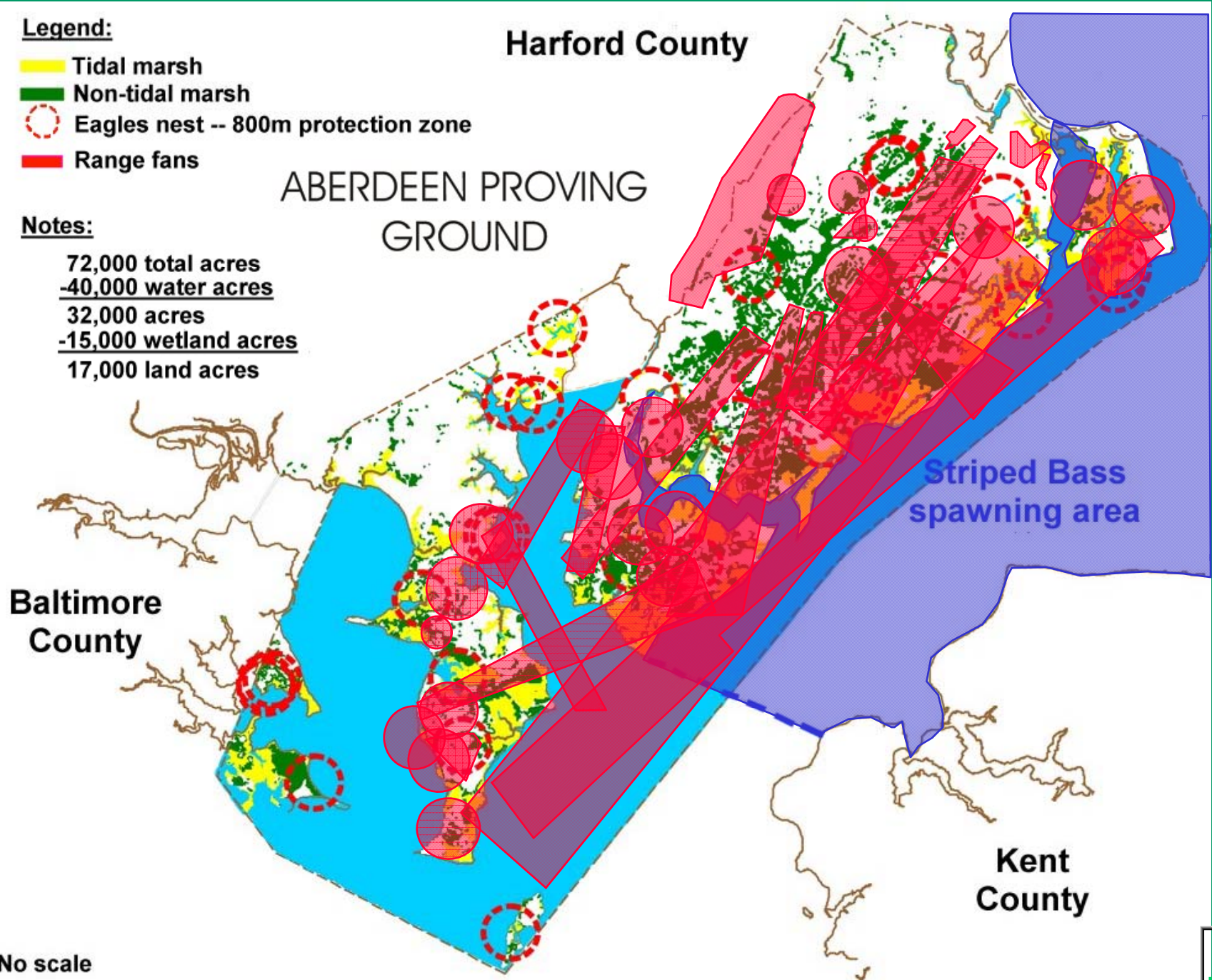


Legend:

-  Tidal marsh
-  Non-tidal marsh
-  Eagles nest -- 800m protection zone
-  Range fans

Notes:

- 72,000 total acres
- 40,000 water acres
- 32,000 acres
- 15,000 wetland acres
- 17,000 land acres



No scale

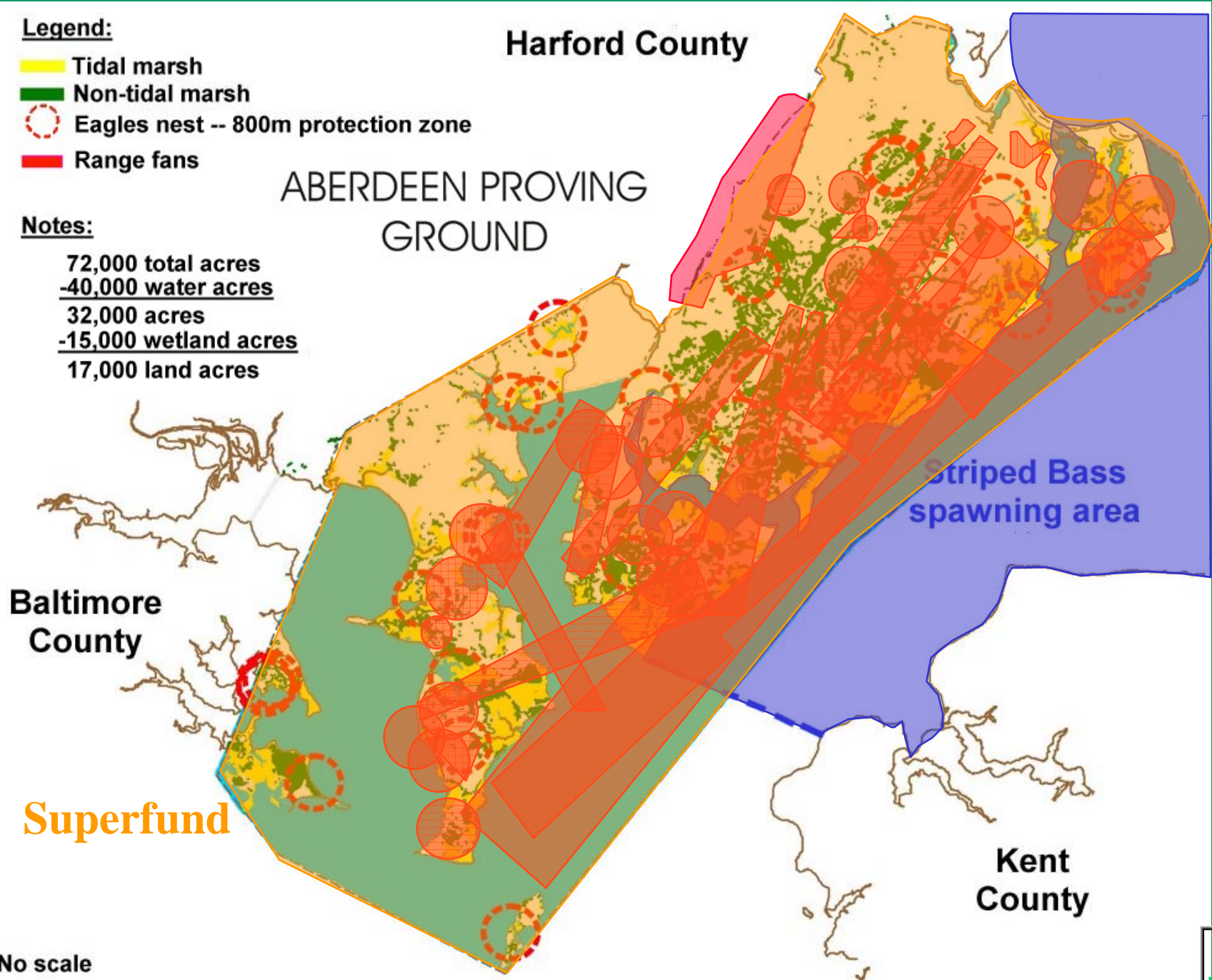


Legend:

-  Tidal marsh
-  Non-tidal marsh
-  Eagles nest -- 800m protection zone
-  Range fans

Notes:

72,000 total acres
-40,000 water acres
32,000 acres
-15,000 wetland acres
17,000 land acres



Legend:

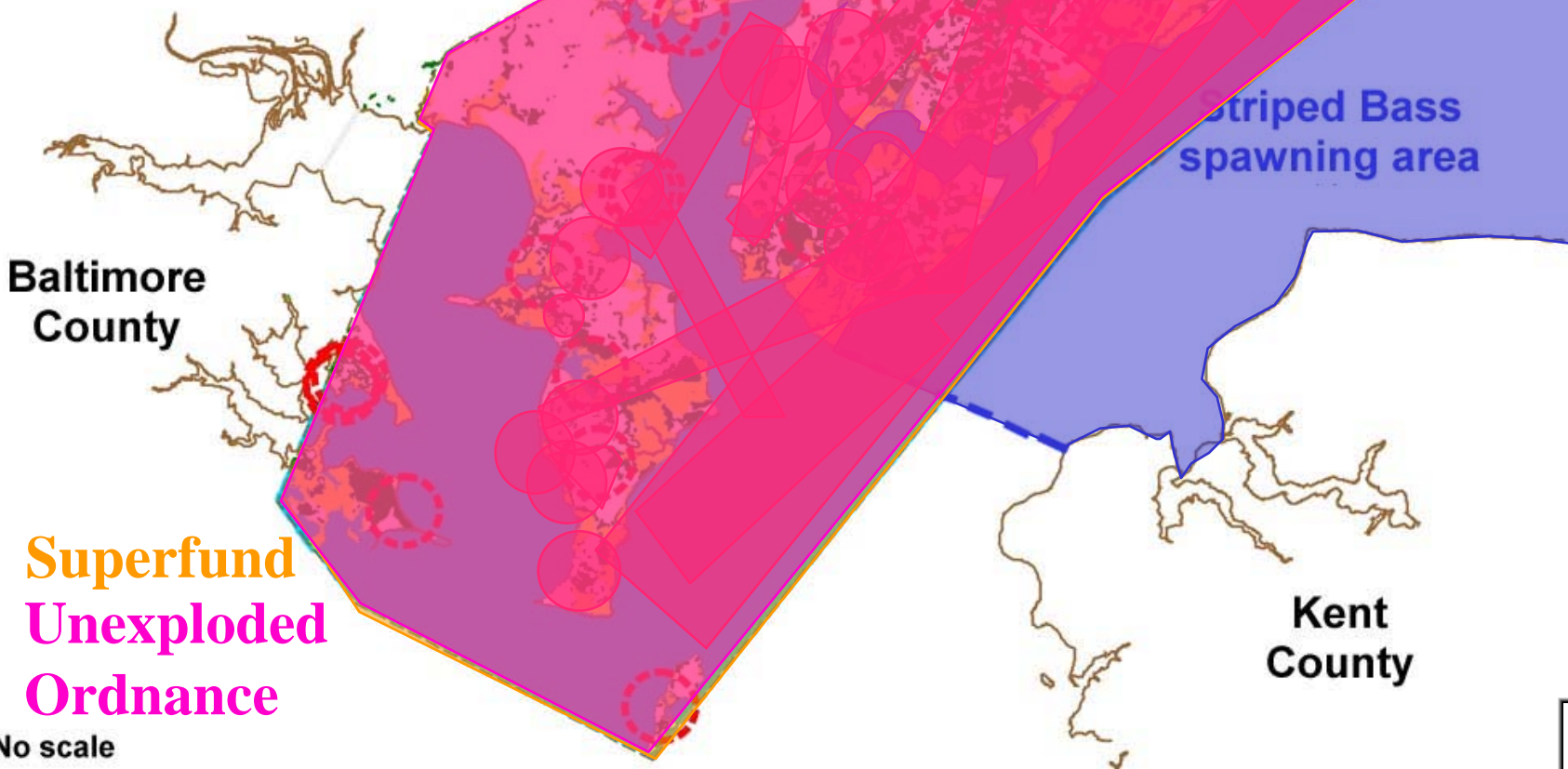
-  Tidal marsh
-  Non-tidal marsh
-  Eagles nest -- 800m protection zone
-  Range fans

Notes:

72,000 total acres
-40,000 water acres
32,000 acres
-15,000 wetland acres
17,000 land acres

Harford County

ABERDEEN PROVING GROUND



Superfund
Unexploded
Ordnance

No scale



What Are The Problems With APG?

- military missions
- developed areas
- extensive upland & aquatic habitat
- widespread chemical contamination
- widespread unexploded ordnance (superfund site)
- rare, threatened & endangered species



Unexploded Ordnance

- 3 to 30 million rounds of “UXO” in the water
- located throughout APG-controlled area
- limited technology for underwater searches
- potential safety hazard without removal
- no approved remediation standard
- potential liability if not removed
- costly to remove and dispose

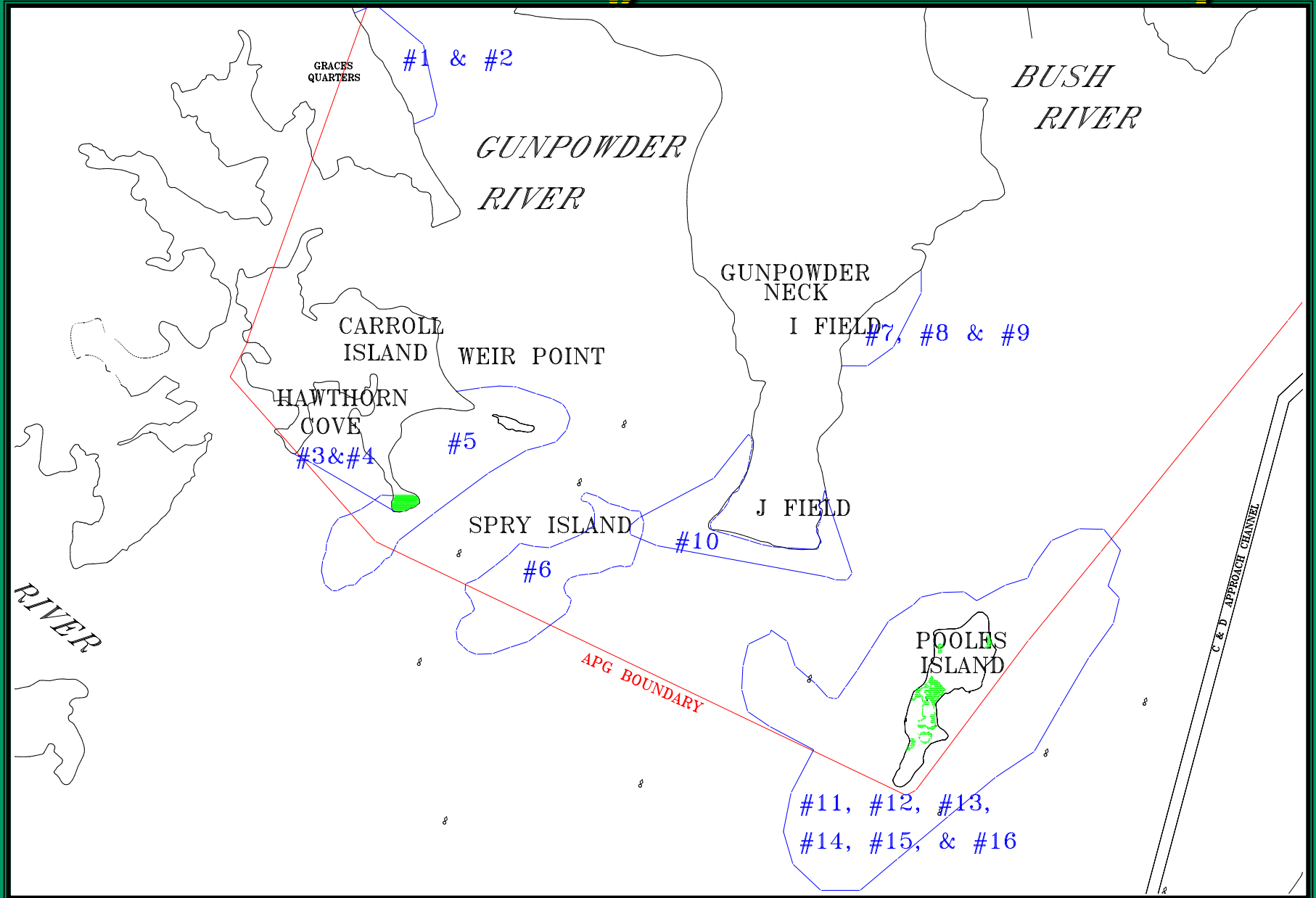


Dredged Material Placement Search Involving APG

- **active search for sites since 1992**
- **18 concepts proposed**
- **no consensus due environmental tradeoffs**
- **1 proposed demonstration site impractical**
- **another proposed demonstration site halted by unexploded ordnance issues**



Initial APG Beneficial Use Concepts



J-Field Environmental Situation

Unique floating marsh

Superfund site (white phosphorus burn site; riot control agents)

Unexploded ordnance in water

Contaminated groundwater

J-Field

Pooles Island

Approximate APG Boundary

Pooles Island Environmental Situation

1630 Heron nests

1 Bald Eagle nest (currently in use)

Numerous deer

Freshwater Ponds used heavily by migratory waterfowl

Superfund site

Unexploded ordnance on site

Current Pooles Island Issues

- Bald Eagle nest
- Great Blue Heron rookery (1630 nests)
- nontidal wetlands
- preferred spawning bottom types (cobble and gravel)
- possible shortnose sturgeon habitat
- oldest lighthouse on Bay (recently restored)
- military missions (e.g., swim testing)
- on national priority list (Superfund)
- unexploded ordnance (UXO)
- narrowest part of Bay - potential hydrodynamic impacts
- many species use area to north as nursery



END