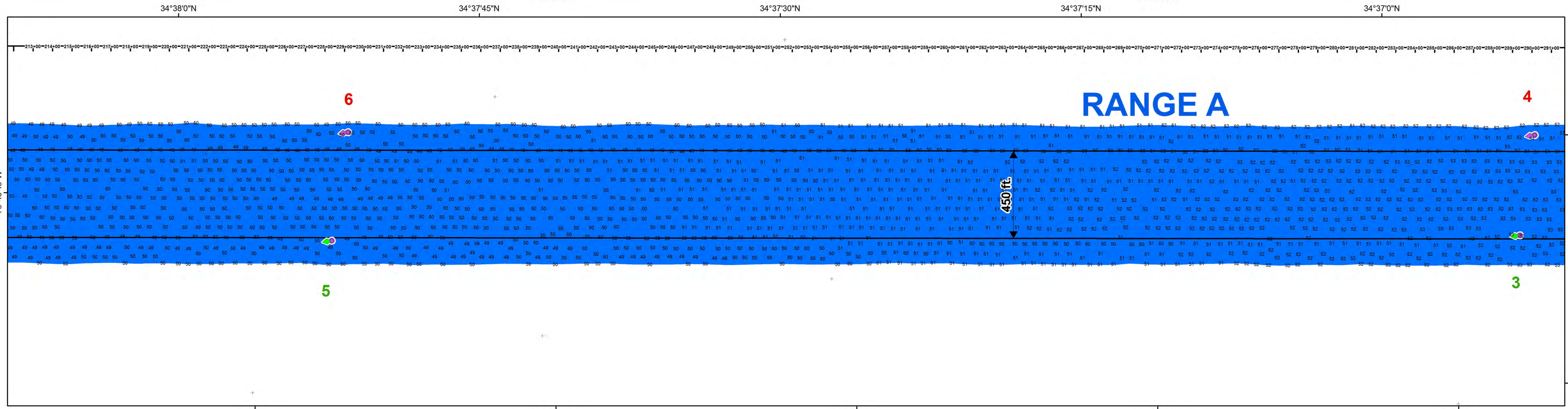
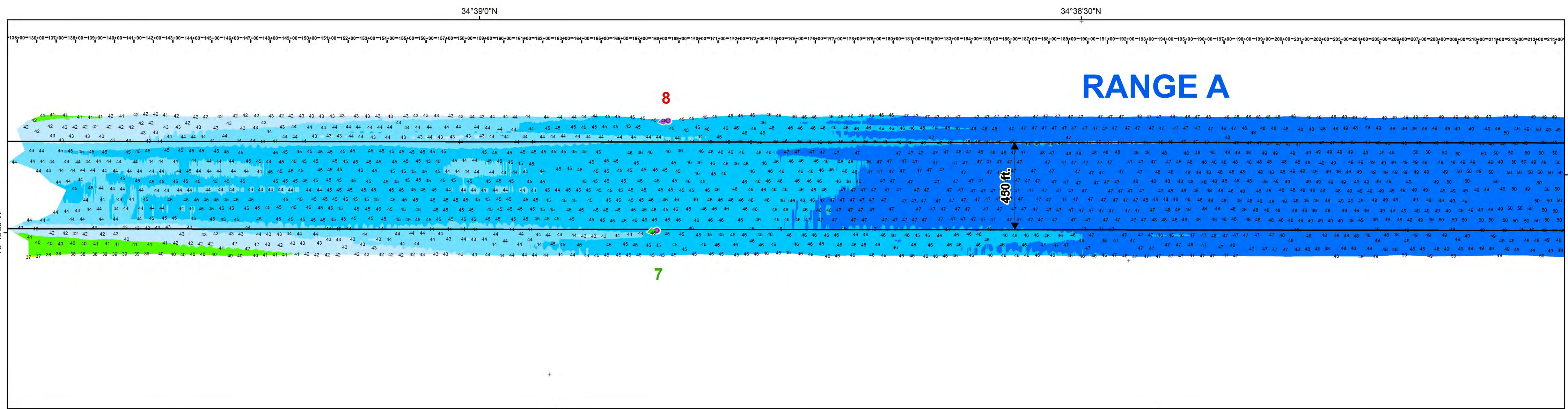
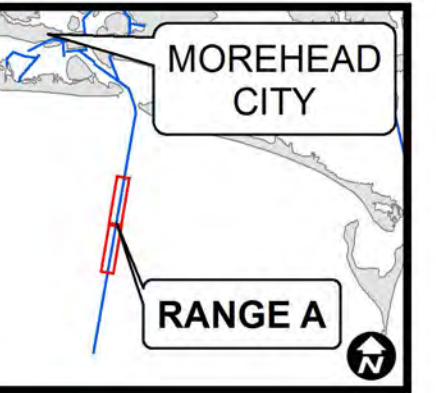
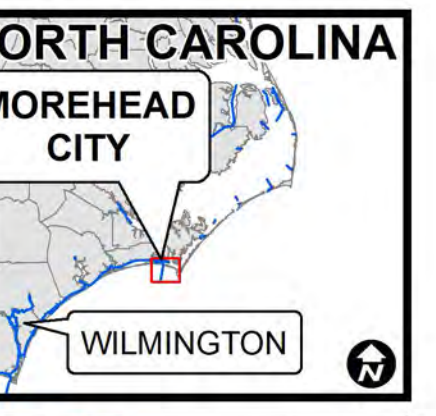
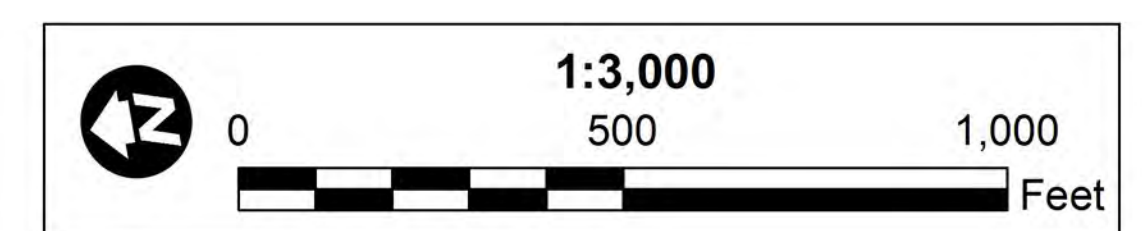
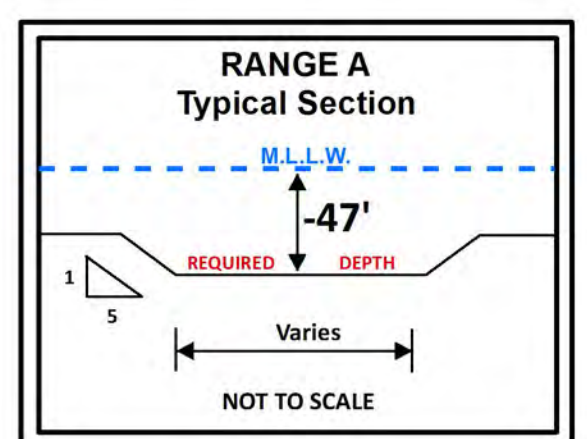


**US Army Corps
of Engineers
Wilmington District**



Legend	
Aids to Navigation	Depth In Feet
Can	20 and Shallower
Nun	20 - 25
Green Lighted Buoy	25 - 32
Red Lighted Buoy	32 - 35
Junction Marker	35 - 38
Green Light	38 - 42
Red Light	42 - 44
Green Daybeacon	44 - 45
Red Daybeacon	45 - 47
Danger Sign	47 and Deeper
Mileboard	
Tide Gage	
Navigation Channel	

- NOTES:
- SOUNDINGS ARE EXPRESSED IN FEET AND REFER TO LOCAL M.L.L.W.
 - PROJECT SURVEYED WITH DISTRICT SURVEY VESSEL "BEAUFORT", USING RTK GPS HORIZONTAL POSITIONING EQUIPMENT AND 200 KHZ SOUNDING EQUIPMENT.
 - HORIZONTAL DATUM NAD 1983. VERTICAL DATUM BEAUFORT.
 - TIDE GAGE LOCATED AT DUKE MARINE LAB
 - THIS PROJECT WAS DESIGNED BY THE WILMINGTON DISTRICT OF THE U.S. ARMY CORPS OF ENGINEERS. THE INITIALS AND SIGNATURES AND REGISTRATION DESIGNATIONS OF INDIVIDUALS APPEAR ON THESE PROJECT DOCUMENTS WITHIN THE SCOPE OF THEIR EMPLOYMENT AS REQUIRED BY ER1110-1-8152.
 - THE INFORMATION DEPICTED ON THIS SURVEY MAP REPRESENTS THE RESULTS OF SURVEYS MADE ON THE DATES INDICATED AND CAN ONLY BE CONSIDERED AS INDICATING THE GENERAL CONDITIONS EXISTING AT THAT TIME. THESE CONDITIONS ARE SUBJECT TO RAPID CHANGE DUE TO SHOALING EVENTS. A PRUDENT MARINER SHOULD NOT RELY EXCLUSIVELY ON THE INFORMATION PROVIDED HERE. REQUIRED BY 33 CFR 209.325
 - NAVIGATION AIDS LOCATED WITH DISTRICT SURVEY VESSEL. ACCURACY +/- 3 METERS.
 - FOR THE MOST UP TO DATE INFORMATION PLEASE CHECK OUR WEBSITE AT: WWW.SAW.USACE.ARMY.MIL



SURVEYED BY: CRP, JBD	MAP FILE NAME: MC_02_RGA_20160120.MXD
MAPPED BY: KTOPINDJM	
SURVEY DATE: 20 JANUARY 2016	
MAP DATE: 22 JANUARY 2016	
MAP SCALE: 1:3,000	

HYDROGRAPHIC SURVEY
U.S. ARMY ENGINEER DISTRICT
WILMINGTON, NORTH CAROLINA
Morehead City Harbor
Range A
Station 136+00 to 291+00
Morehead City, North Carolina