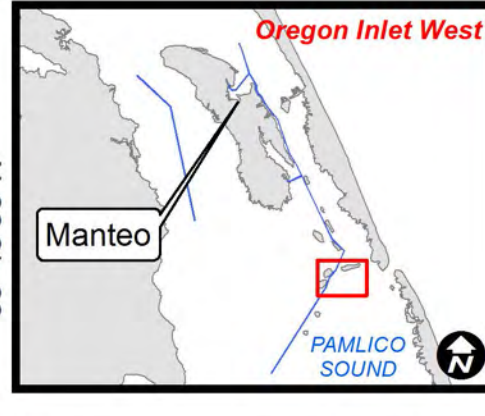
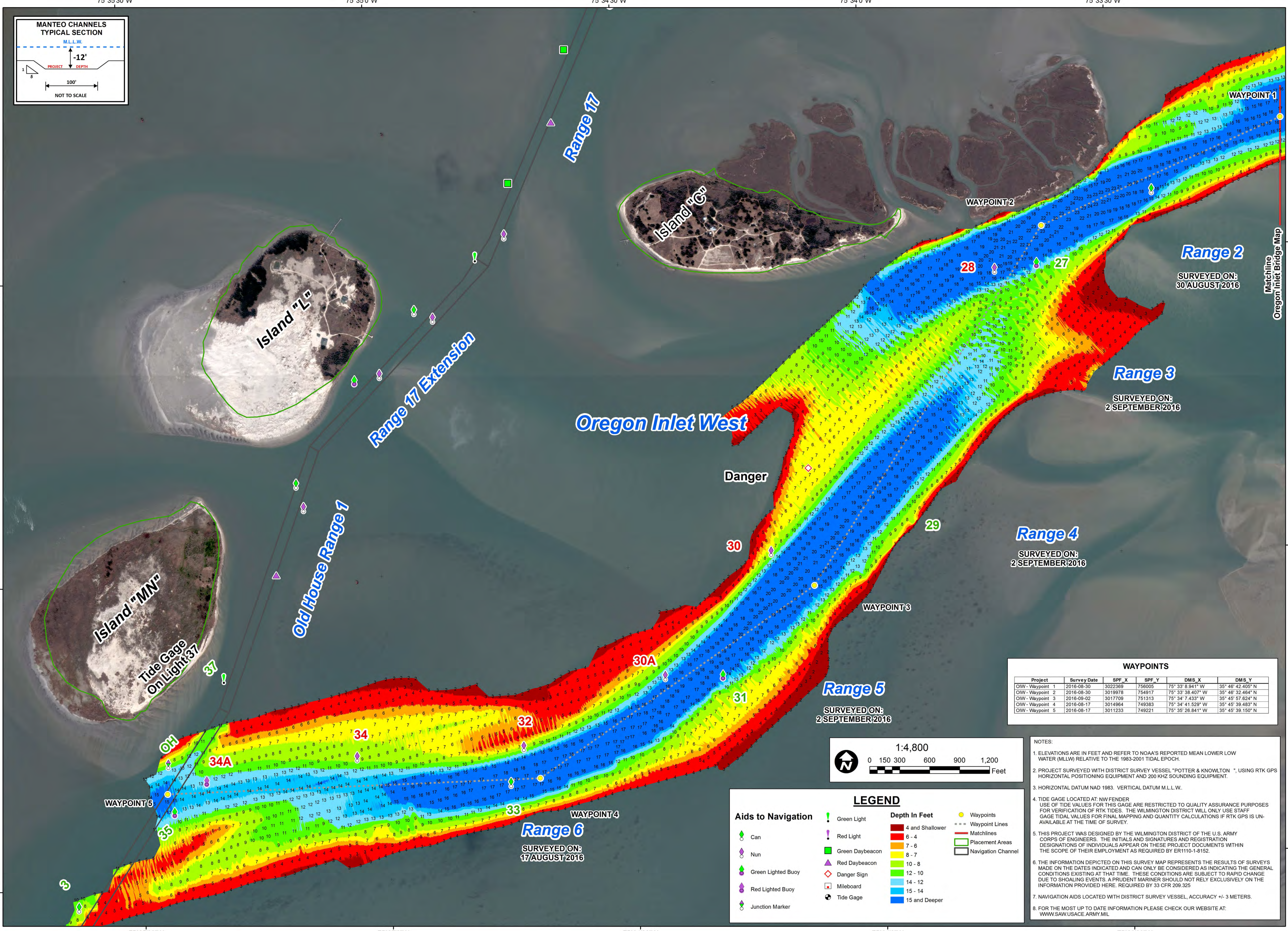


US Army Corps of Engineers
Wilmington District

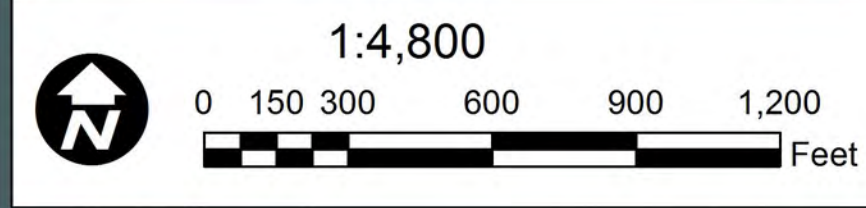


SURVEY DATE: 17 & 30 AUGUST & 2 SEPTEMBER 2016	SURVEYED BY: DCH, BRJ
MAP DATE: 06 SEPTEMBER 2016	MAPPED: K7OPNSMG
MAP SCALE: 1:4,800	
IMAGERY DATE: 06 MARCH 2016	
© 2016 DIGITALGLOBE NEXTVIEW LICENSE	MAP FILE NAME: MN_02_OIW_20160902.MXD



WAYPOINTS

Project	Survey Date	SPF_X	SPF_Y	DMS_X	DMS_Y
OIW - Waypoint 1	2016-08-30	3022369	756005	75° 33' 8.941" W	35° 46' 42.405" N
OIW - Waypoint 2	2016-08-30	3019978	754917	75° 33' 38.407" W	35° 46' 32.464" N
OIW - Waypoint 3	2016-09-02	3017709	751313	75° 34' 7.433" W	35° 45' 57.824" N
OIW - Waypoint 4	2016-08-17	3014964	749383	75° 34' 41.529" W	35° 45' 39.483" N
OIW - Waypoint 5	2016-08-17	3011233	749221	75° 35' 26.841" W	35° 45' 39.150" N



LEGEND

Green Light	4 and Shallower	Waypoints
Red Light	6 - 4	Waypoint Lines
Green Daybeacon	7 - 6	Matchlines
Red Daybeacon	8 - 7	Placement Areas
Green Lighted Buoy	10 - 8	Navigation Channel
Red Lighted Buoy	12 - 10	
Junction Marker	14 - 12	
	15 - 14	
	15 and Deeper	

- NOTES:**
- ELEVATIONS ARE IN FEET AND REFER TO NOAA'S REPORTED MEAN LOWER LOW WATER (MLLW) RELATIVE TO THE 1983-2001 TIDAL EPOCH.
 - PROJECT SURVEYED WITH DISTRICT SURVEY VESSEL "POTTER & KNOWLTON", USING RTK GPS HORIZONTAL POSITIONING EQUIPMENT AND 200 KHZ SOUNDING EQUIPMENT.
 - HORIZONTAL DATUM NAD 1983. VERTICAL DATUM M.L.L.W.
 - TIDE GAGE LOCATED AT: NW FENDER. USE OF TIDE VALUES FOR THIS GAGE ARE RESTRICTED TO QUALITY ASSURANCE PURPOSES FOR VERIFICATION OF RTK TIDES. THE WILMINGTON DISTRICT WILL ONLY USE STAFF GAGE TIDAL VALUES FOR FINAL MAPPING AND QUANTITY CALCULATIONS IF RTK GPS IS UNAVAILABLE AT THE TIME OF SURVEY.
 - THIS PROJECT WAS DESIGNED BY THE WILMINGTON DISTRICT OF THE U.S. ARMY CORPS OF ENGINEERS. THE INITIALS AND SIGNATURES AND REGISTRATION DESIGNATIONS OF INDIVIDUALS APPEAR ON THESE PROJECT DOCUMENTS WITHIN THE SCOPE OF THEIR EMPLOYMENT AS REQUIRED BY ER1110-1-8152.
 - THE INFORMATION DEPICTED ON THIS SURVEY MAP REPRESENTS THE RESULTS OF SURVEYS MADE ON THE DATES INDICATED AND CAN ONLY BE CONSIDERED AS INDICATING THE GENERAL CONDITIONS EXISTING AT THAT TIME. THESE CONDITIONS ARE SUBJECT TO RAPID CHANGE DUE TO SHOALING EVENTS. A PRUDENT MARINER SHOULD NOT RELY EXCLUSIVELY ON THE INFORMATION PROVIDED HERE. REQUIRED BY 33 CFR 209.325
 - NAVIGATION AIDS LOCATED WITH DISTRICT SURVEY VESSEL, ACCURACY +/- 3 METERS.
 - FOR THE MOST UP TO DATE INFORMATION PLEASE CHECK OUR WEBSITE AT: WWW.SAW.USACE.ARMY.MIL

HYDROGRAPHIC SURVEY
U.S. ARMY ENGINEER DISTRICT
CORPS OF ENGINEERS
WILMINGTON, NORTH CAROLINA
MANTEO CHANNELS
Oregon Inlet West
Ranges 2-6
WANCHESIE, NORTH CAROLINA