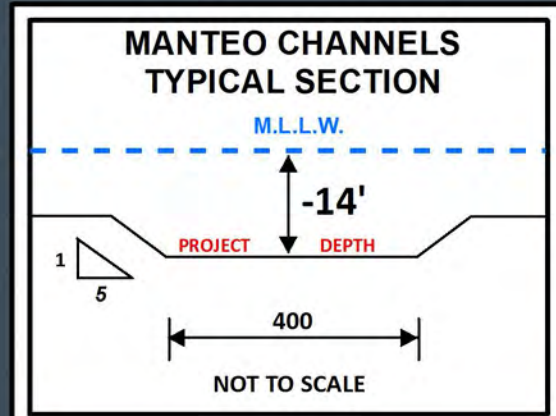
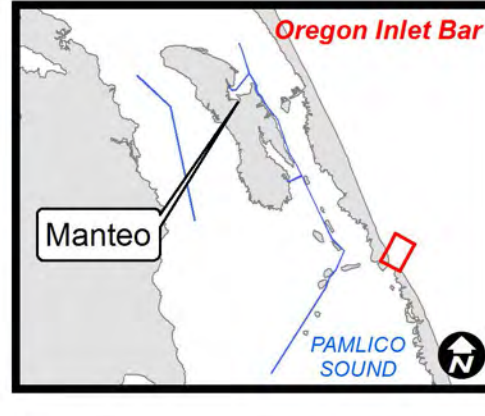


35°47'0"N 75°32'0"W 35°47'30"N



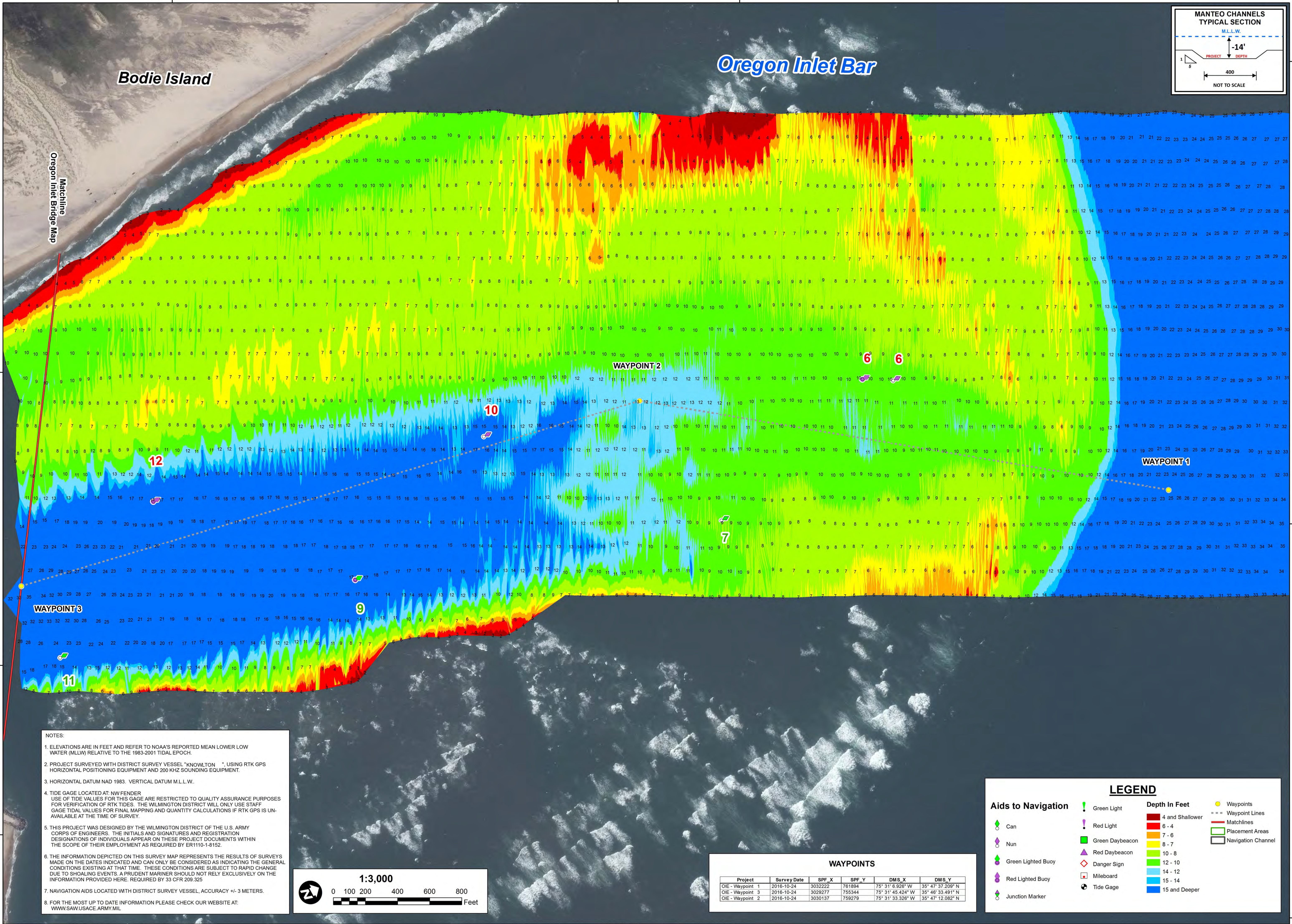
US Army Corps of Engineers  
Wilmington District



# Oregon Inlet Bar

Bodie Island

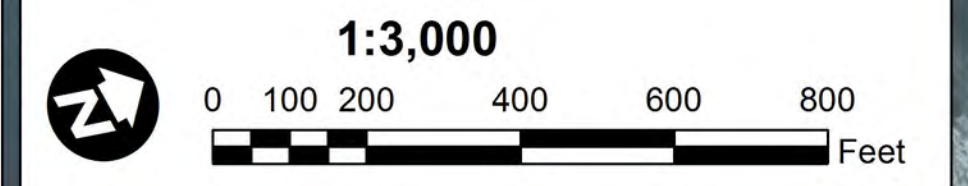
Oregon Inlet Bridge Map



SURVEYED BY: BRJ, DCH	MAP FILE NAME: MN_30_OIE_20161024.MXD
MAPPED: K7OPNSMG	
PROCESSED BY: K7OPNSMG	
SURVEY DATE: 24 OCTOBER 2016	
MAP DATE: 26 OCTOBER 2016	
MAP SCALE: 1:3,000	
IMAGERY DATE: 17 SEPTEMBER 2016	
© 2016 DIGITALGLOBE NEXTVIEW LICENSE	

**NOTES:**

- ELEVATIONS ARE IN FEET AND REFER TO NOAA'S REPORTED MEAN LOWER LOW WATER (MLLW) RELATIVE TO THE 1983-2001 TIDAL EPOCH.
- PROJECT SURVEYED WITH DISTRICT SURVEY VESSEL "KNOWLTON", USING RTK GPS HORIZONTAL POSITIONING EQUIPMENT AND 200 KHZ SOUNDING EQUIPMENT.
- HORIZONTAL DATUM NAD 1983. VERTICAL DATUM M.L.L.W.
- TIDE GAGE LOCATED AT NW FENDER. USE OF TIDE VALUES FOR THIS GAGE ARE RESTRICTED TO QUALITY ASSURANCE PURPOSES FOR VERIFICATION OF RTK TIDES. THE WILMINGTON DISTRICT WILL ONLY USE STAFF GAGE TIDE VALUES FOR FINAL MAPPING AND QUANTITY CALCULATIONS IF RTK GPS IS UNAVAILABLE AT THE TIME OF SURVEY.
- THIS PROJECT WAS DESIGNED BY THE WILMINGTON DISTRICT OF THE U.S. ARMY CORPS OF ENGINEERS. THE INITIALS AND SIGNATURES AND REGISTRATION DESIGNATIONS OF INDIVIDUALS APPEAR ON THESE PROJECT DOCUMENTS WITHIN THE SCOPE OF THEIR EMPLOYMENT AS REQUIRED BY ER1110-1-8152.
- THE INFORMATION DEPICTED ON THIS SURVEY MAP REPRESENTS THE RESULTS OF SURVEYS MADE ON THE DATES INDICATED AND CAN ONLY BE CONSIDERED AS INDICATING THE GENERAL CONDITIONS EXISTING AT THAT TIME. THESE CONDITIONS ARE SUBJECT TO RAPID CHANGE DUE TO SHOALING EVENTS. A PRUDENT MARINER SHOULD NOT RELY EXCLUSIVELY ON THE INFORMATION PROVIDED HERE. REQUIRED BY 33 CFR 209.325
- NAVIGATION AIDS LOCATED WITH DISTRICT SURVEY VESSEL, ACCURACY +/- 3 METERS.
- FOR THE MOST UP TO DATE INFORMATION PLEASE CHECK OUR WEBSITE AT: WWW.SAWUSACE.ARMY.MIL



**WAYPOINTS**

Project	Survey Date	SPF_X	SPF_Y	DMS_X	DMS_Y
OIE - Waypoint 1	2016-10-24	3032222	761894	75° 31' 6.926" W	35° 47' 37.209" N
OIE - Waypoint 3	2016-10-24	3029277	755344	75° 31' 45.424" W	35° 46' 33.491" N
OIE - Waypoint 2	2016-10-24	3030137	759279	75° 31' 33.326" W	35° 47' 12.082" N

**LEGEND**

<b>Aids to Navigation</b>	Green Light	Depth In Feet	Waypoints
Can	Red Light	4 and Shallower	Waypoint Lines
Nun	Green Daybeacon	6 - 4	Matchlines
Green Lighted Buoy	Red Daybeacon	7 - 6	Placement Areas
Red Lighted Buoy	Danger Sign	8 - 7	Navigation Channel
Junction Marker	Mileboard	10 - 8	
	Tide Gage	12 - 10	
		14 - 12	
		15 - 14	
		15 and Deeper	

**HYDROGRAPHIC SURVEY**  
U.S. ARMY ENGINEER DISTRICT  
CORPS OF ENGINEERS  
WILMINGTON, NORTH CAROLINA  
**MANTEO CHANNELS**  
**Oregon Inlet Bar**  
MANTEO, NORTH CAROLINA

75°32'0"W

35°46'30"N

75°32'0"W

35°47'0"N

75°31'0"W

35°47'30"N

35°46'30"N 75°31'0"W 35°47'0"N