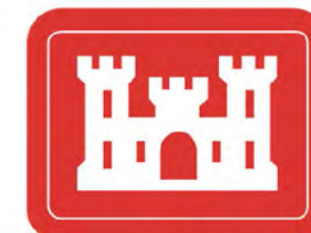


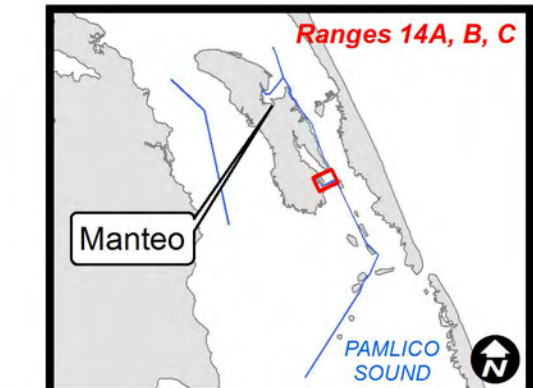
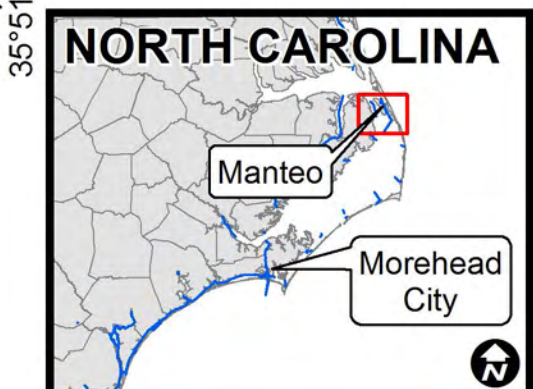
75°37'30"W

75°37'0"W

35°51'0"N



US Army Corps of Engineers
Wilmington District



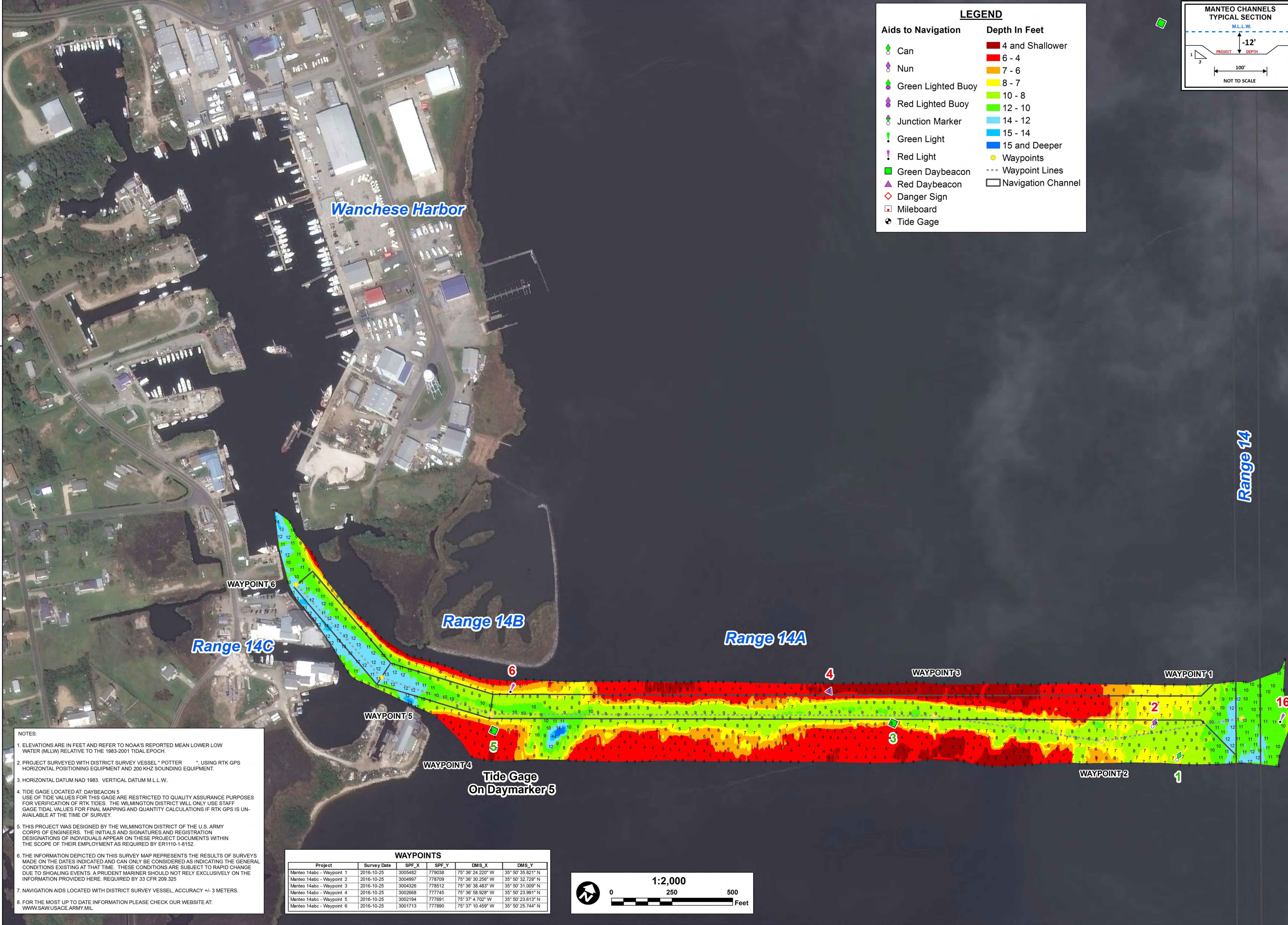
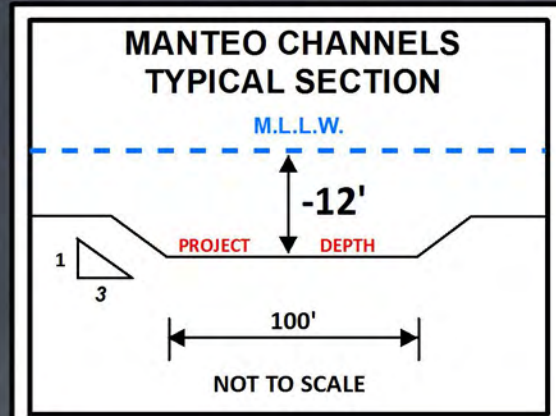
35°51'0"N

SURVEY DATE: 25 OCTOBER 2016	SURVEYED BY: BRJ, DCH
MAP DATE: 26 OCTOBER 2016	MAPPED: K7DPFSGD
MAP SCALE: 1:2,000	PROCESSED BY: K7OPNSMG
IMAGERY DATE: 17 SEPTEMBER 2016	
© 2016 DIGITALGLOBE NEXTVIEW LICENSE	MAP FILE NAME: MN_10_ABC_20161025.MXD

HYDROGRAPHIC SURVEY
 U.S. ARMY ENGINEER DISTRICT
 CORPS OF ENGINEERS
 WILMINGTON, NORTH CAROLINA
MANTEO CHANNELS
Ranges 14A, B, C
& Wanchese Harbor
 WANCHESE, NORTH CAROLINA

LEGEND

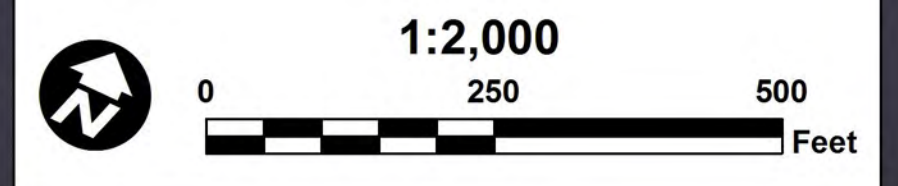
Aids to Navigation	Depth In Feet
Can	4 and Shallower
Nun	6 - 4
Green Lighted Buoy	7 - 6
Red Lighted Buoy	8 - 7
Junction Marker	10 - 8
Green Light	12 - 10
Red Light	14 - 12
Green Daybeacon	15 - 14
Red Daybeacon	15 and Deeper
Danger Sign	Waypoints
Mileboard	Waypoint Lines
Tide Gage	Navigation Channel



- NOTES:**
- ELEVATIONS ARE IN FEET AND REFER TO NOAA'S REPORTED MEAN LOWER LOW WATER (MLLW) RELATIVE TO THE 1983-2001 TIDAL EPOCH.
 - PROJECT SURVEYED WITH DISTRICT SURVEY VESSEL "POTTER", USING RTK GPS HORIZONTAL POSITIONING EQUIPMENT AND 200 KHZ SOUNDING EQUIPMENT.
 - HORIZONTAL DATUM NAD 1983. VERTICAL DATUM M.L.L.W.
 - TIDE GAGE LOCATED AT DAYBEACON 5. USE OF TIDE VALUES FOR THIS GAGE ARE RESTRICTED TO QUALITY ASSURANCE PURPOSES FOR VERIFICATION OF RTK TIDES. THE WILMINGTON DISTRICT WILL ONLY USE STAFF GAGE TIDAL VALUES FOR FINAL MAPPING AND QUANTITY CALCULATIONS IF RTK GPS IS UNAVAILABLE AT THE TIME OF SURVEY.
 - THIS PROJECT WAS DESIGNED BY THE WILMINGTON DISTRICT OF THE U.S. ARMY CORPS OF ENGINEERS. THE INITIALS AND SIGNATURES AND REGISTRATION DESIGNATIONS OF INDIVIDUALS APPEAR ON THESE PROJECT DOCUMENTS WITHIN THE SCOPE OF THEIR EMPLOYMENT AS REQUIRED BY ER1110-1-8152.
 - THE INFORMATION DEPICTED ON THIS SURVEY MAP REPRESENTS THE RESULTS OF SURVEYS MADE ON THE DATES INDICATED AND CAN ONLY BE CONSIDERED AS INDICATING THE GENERAL CONDITIONS EXISTING AT THAT TIME. THESE CONDITIONS ARE SUBJECT TO RAPID CHANGE DUE TO SHOALING EVENTS. A PRUDENT MARINER SHOULD NOT RELY EXCLUSIVELY ON THE INFORMATION PROVIDED HERE. REQUIRED BY 33 CFR 209.325
 - NAVIGATION AIDS LOCATED WITH DISTRICT SURVEY VESSEL. ACCURACY +/- 3 METERS.
 - FOR THE MOST UP TO DATE INFORMATION PLEASE CHECK OUR WEBSITE AT: WWW.SAW.USACE.ARMY.MIL

WAYPOINTS

Project	Survey Date	SPF_X	SPF_Y	DMS_X	DMS_Y
Manteo 14abc - Waypoint 1	2016-10-25	3005482	779038	75° 36' 24.220" W	35° 50' 35.821" N
Manteo 14abc - Waypoint 2	2016-10-25	3004997	778709	75° 36' 30.256" W	35° 50' 32.729" N
Manteo 14abc - Waypoint 3	2016-10-25	3004326	778512	75° 36' 38.483" W	35° 50' 31.009" N
Manteo 14abc - Waypoint 4	2016-10-25	3002668	777745	75° 36' 58.928" W	35° 50' 23.991" N
Manteo 14abc - Waypoint 5	2016-10-25	3002194	777691	75° 37' 4.702" W	35° 50' 23.613" N
Manteo 14abc - Waypoint 6	2016-10-25	3001713	777890	75° 37' 10.459" W	35° 50' 25.744" N



Range 14

Range 14C

Range 14B

Range 14A

Tide Gage
On Daymarker 5

75°37'30"W

35°50'30"N

75°37'0"W

75°36'30"W

35°50'30"N