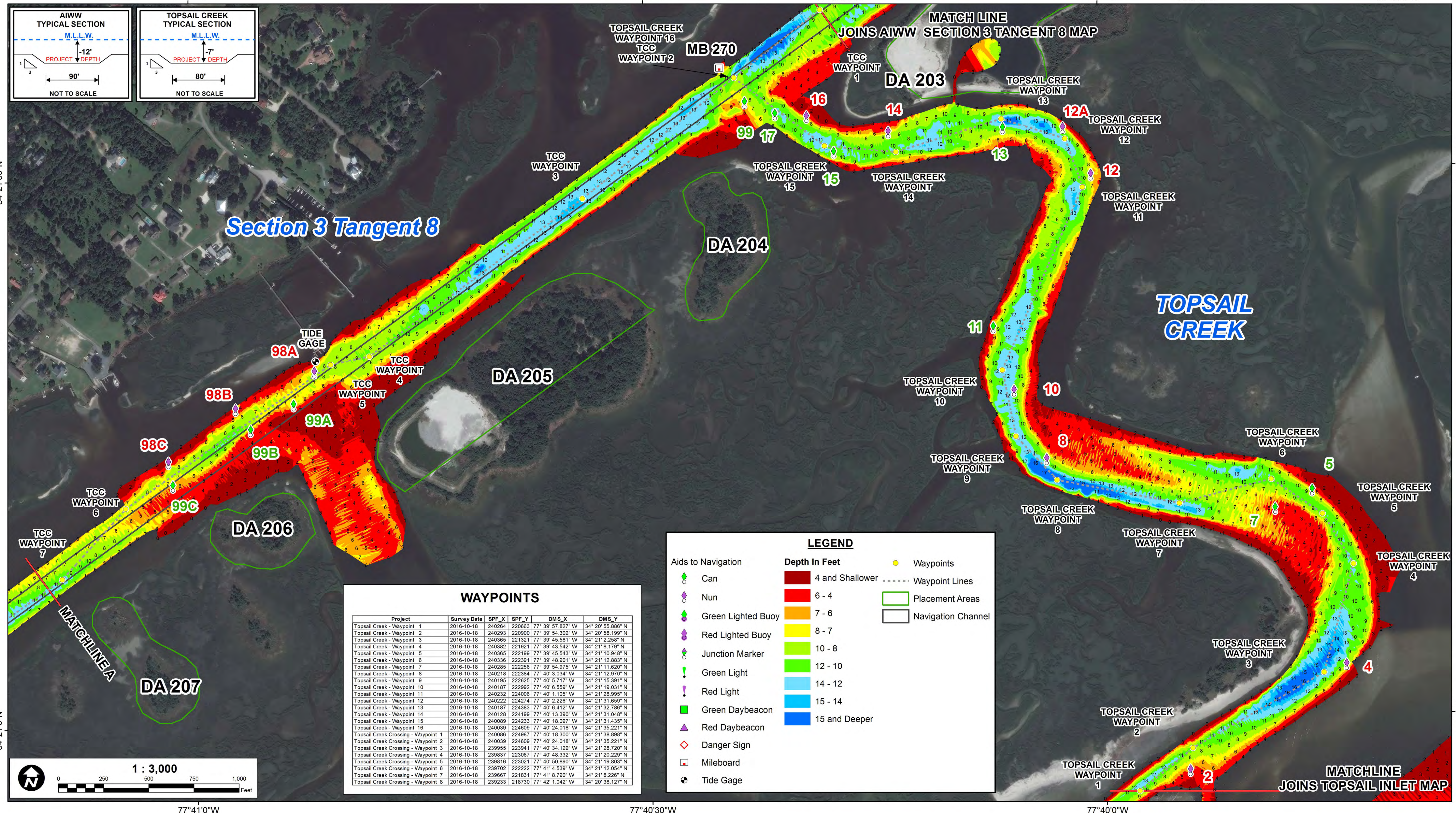
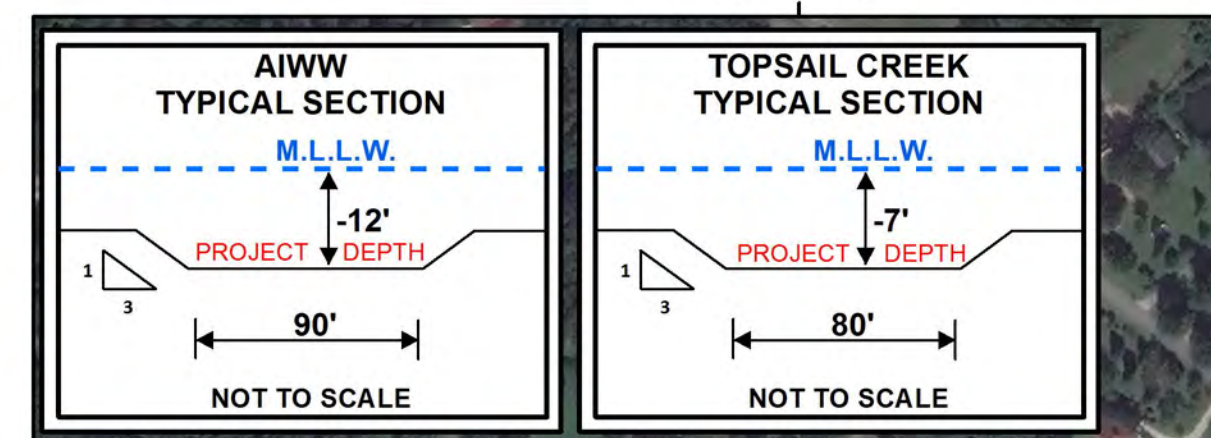


NOTES:

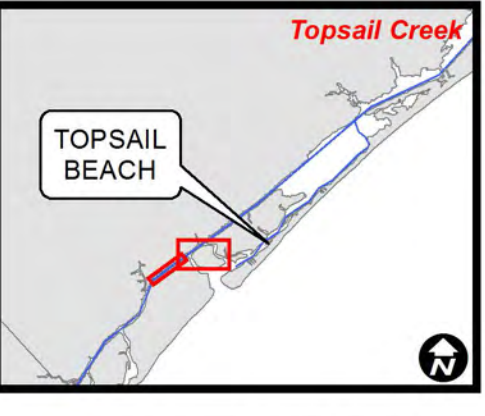
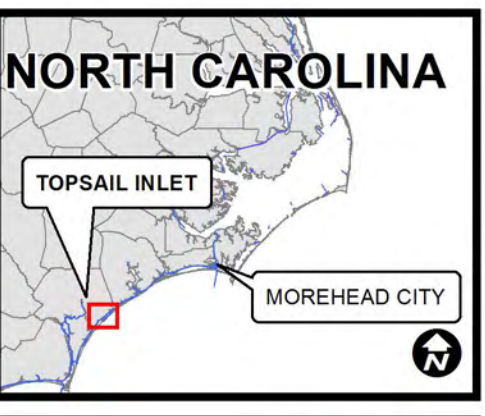
- ELEVATIONS ARE IN FEET AND REFER TO NOAA'S REPORTED MEAN LOWER LOW WATER (MLLW) RELATIVE TO THE 1983-2001 TIDAL EPOCH.
- PROJECT SURVEYED WITH DISTRICT SURVEY VESSEL "BUTLER", USING RTK GPS HORIZONTAL POSITIONING EQUIPMENT AND 200 KHZ SOUNDING EQUIPMENT.
- HORIZONTAL DATUM NAD 1983. VERTICAL DATUM M.L.L.W.
- TIDE GAGE LOCATED AT MILE BOARD 270. USE OF TIDE VALUES FOR THIS GAGE ARE RESTRICTED TO QUALITY ASSURANCE PURPOSES FOR VERIFICATION OF RTK TIDES. THE WILMINGTON DISTRICT WILL ONLY USE STAFF GAGE TIDAL VALUES FOR FINAL MAPPING AND QUANTITY CALCULATIONS IF RTK GPS IS UNAVAILABLE AT THE TIME OF SURVEY.
- THIS PROJECT WAS DESIGNED BY THE WILMINGTON DISTRICT OF THE U.S. ARMY CORPS OF ENGINEERS. THE INITIALS AND SIGNATURES AND REGISTRATION DESIGNATIONS OF INDIVIDUALS APPEAR ON THESE PROJECT DOCUMENTS WITHIN THE SCOPE OF THEIR EMPLOYMENT AS REQUIRED BY ER1110-1-8152.
- THE INFORMATION DEPICTED ON THIS SURVEY MAP REPRESENTS THE RESULTS OF SURVEYS MADE ON THE DATES INDICATED AND CAN ONLY BE CONSIDERED AS INDICATING THE GENERAL CONDITIONS EXISTING AT THAT TIME. THESE CONDITIONS ARE SUBJECT TO RAPID CHANGE DUE TO SHOALING EVENTS. A PRUDENT MARINER SHOULD NOT RELY EXCLUSIVELY ON THE INFORMATION PROVIDED HERE. REQUIRED BY 33 CFR 209.325
- NAVIGATION AIDS LOCATED WITH DISTRICT SURVEY VESSEL. ACCURACY +/- 3 METERS.
- FOR THE MOST UP TO DATE INFORMATION PLEASE CHECK OUR WEBSITE AT: WWW.SAW.USACE.ARMY.MIL



Project	Survey Date	SPP_X	SPP_Y	DMS_X	DMS_Y
Topsisail Creek - Waypoint 1	2016-10-18	240284	220863	77° 39' 57.827\" W	34° 20' 55.888\" N
Topsisail Creek - Waypoint 2	2016-10-18	240293	220900	77° 39' 54.302\" W	34° 20' 58.159\" N
Topsisail Creek - Waypoint 3	2016-10-18	240365	221321	77° 39' 45.581\" W	34° 21' 2.258\" N
Topsisail Creek - Waypoint 4	2016-10-18	240382	221921	77° 39' 43.542\" W	34° 21' 8.179\" N
Topsisail Creek - Waypoint 5	2016-10-18	240385	222199	77° 39' 45.543\" W	34° 21' 19.031\" N
Topsisail Creek - Waypoint 6	2016-10-18	240336	222391	77° 39' 48.901\" W	34° 21' 12.865\" N
Topsisail Creek - Waypoint 7	2016-10-18	240285	222256	77° 39' 54.975\" W	34° 21' 11.820\" N
Topsisail Creek - Waypoint 8	2016-10-18	240218	222384	77° 40' 3.034\" W	34° 21' 12.970\" N
Topsisail Creek - Waypoint 9	2016-10-18	240195	222625	77° 40' 5.717\" W	34° 21' 15.391\" N
Topsisail Creek - Waypoint 10	2016-10-18	240187	222982	77° 40' 6.559\" W	34° 21' 19.031\" N
Topsisail Creek - Waypoint 11	2016-10-18	240232	224066	77° 40' 1.105\" W	34° 21' 28.995\" N
Topsisail Creek - Waypoint 12	2016-10-18	240222	224274	77° 40' 2.226\" W	34° 21' 31.859\" N
Topsisail Creek - Waypoint 13	2016-10-18	240187	224383	77° 40' 6.412\" W	34° 21' 32.786\" N
Topsisail Creek - Waypoint 14	2016-10-18	240128	224199	77° 40' 13.390\" W	34° 21' 31.048\" N
Topsisail Creek - Waypoint 15	2016-10-18	240089	224233	77° 40' 18.097\" W	34° 21' 31.435\" N
Topsisail Creek - Waypoint 16	2016-10-18	240039	224609	77° 40' 24.018\" W	34° 21' 35.221\" N
Topsisail Creek Crossing - Waypoint 1	2016-10-18	240086	224987	77° 40' 18.300\" W	34° 21' 38.898\" N
Topsisail Creek Crossing - Waypoint 2	2016-10-18	240039	224609	77° 40' 24.018\" W	34° 21' 35.221\" N
Topsisail Creek Crossing - Waypoint 3	2016-10-18	239955	223941	77° 40' 34.129\" W	34° 21' 28.720\" N
Topsisail Creek Crossing - Waypoint 4	2016-10-18	239837	223067	77° 40' 48.332\" W	34° 21' 20.229\" N
Topsisail Creek Crossing - Waypoint 5	2016-10-18	239816	223021	77° 40' 50.890\" W	34° 21' 19.803\" N
Topsisail Creek Crossing - Waypoint 6	2016-10-18	239702	222222	77° 41' 4.539\" W	34° 21' 12.054\" N
Topsisail Creek Crossing - Waypoint 7	2016-10-18	239667	221831	77° 41' 8.790\" W	34° 21' 8.226\" N
Topsisail Creek Crossing - Waypoint 8	2016-10-18	239233	218730	77° 42' 1.042\" W	34° 20' 38.127\" N

LEGEND

	Depth In Feet	
	4 and Shallower	
	6 - 4	
	7 - 6	
	8 - 7	
	10 - 8	
	12 - 10	
	14 - 12	
	15 - 14	
	15 and Deeper	



SURVEY DATE: 18-21 OCTOBER 2016	SURVEYED BY: LMT, SRV
MAP DATE: 25 OCTOBER 2016	MAPPED: K7OPNDJIM
MAP SCALE: 1:3,000	PROCESSED BY: K7OPNDJIM
IMAGERY DATE: 11 OCTOBER 2016	
© 2016 DIGITALGLOBE NEXTVIEW LICENSE	MAP FILE NAME: IN_05_TCC_20161018.MXD

HYDROGRAPHIC SURVEY
 U.S. ARMY ENGINEER DISTRICT
 CORPS OF ENGINEERS
 WILMINGTON, NORTH CAROLINA

**Topsisail Creek
 And Crossing**
 TOPSAIL ISLAND, NORTH CAROLINA