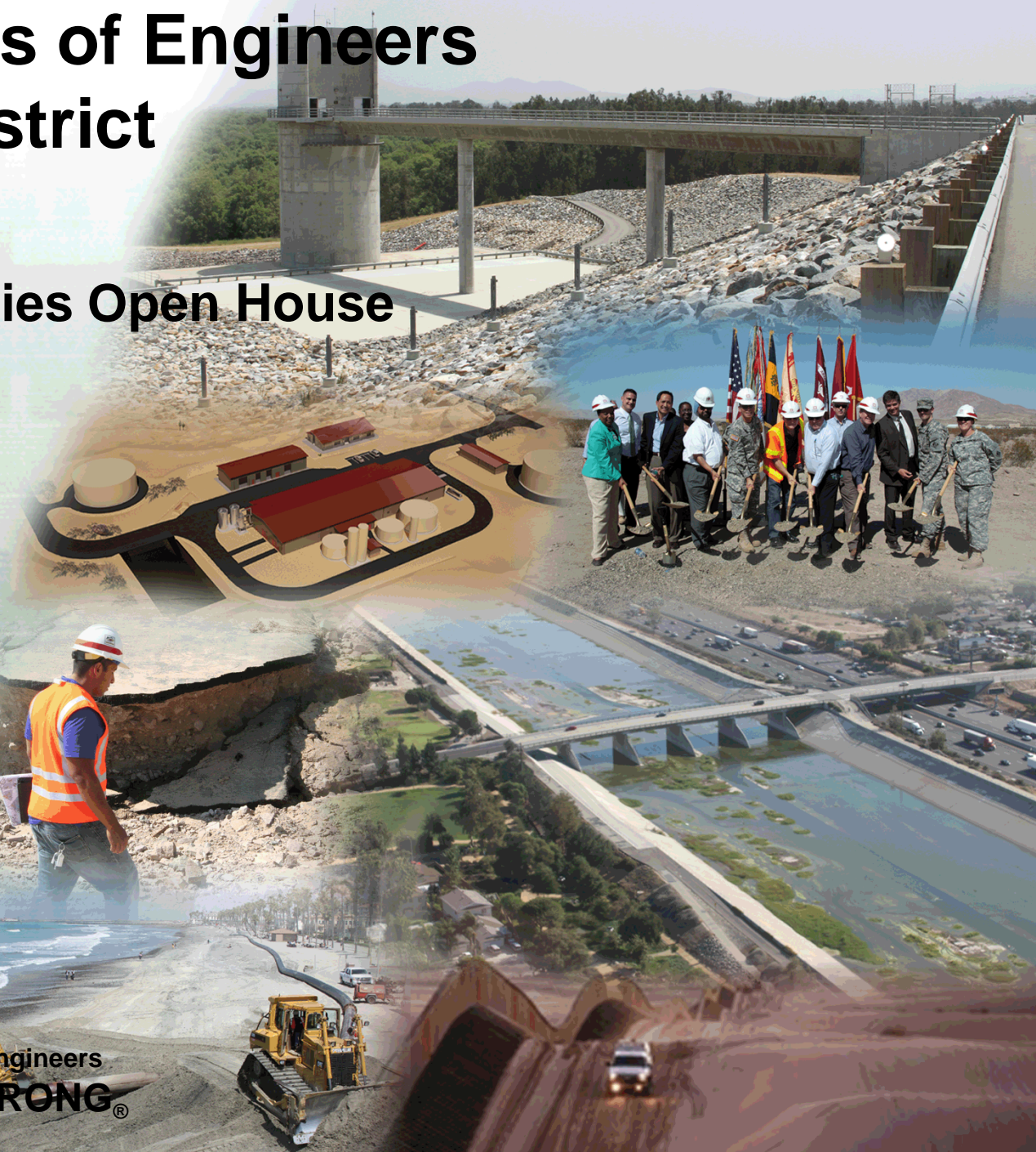


U.S. Army Corps of Engineers Los Angeles District

Business Opportunities Open House

October 14, 2015

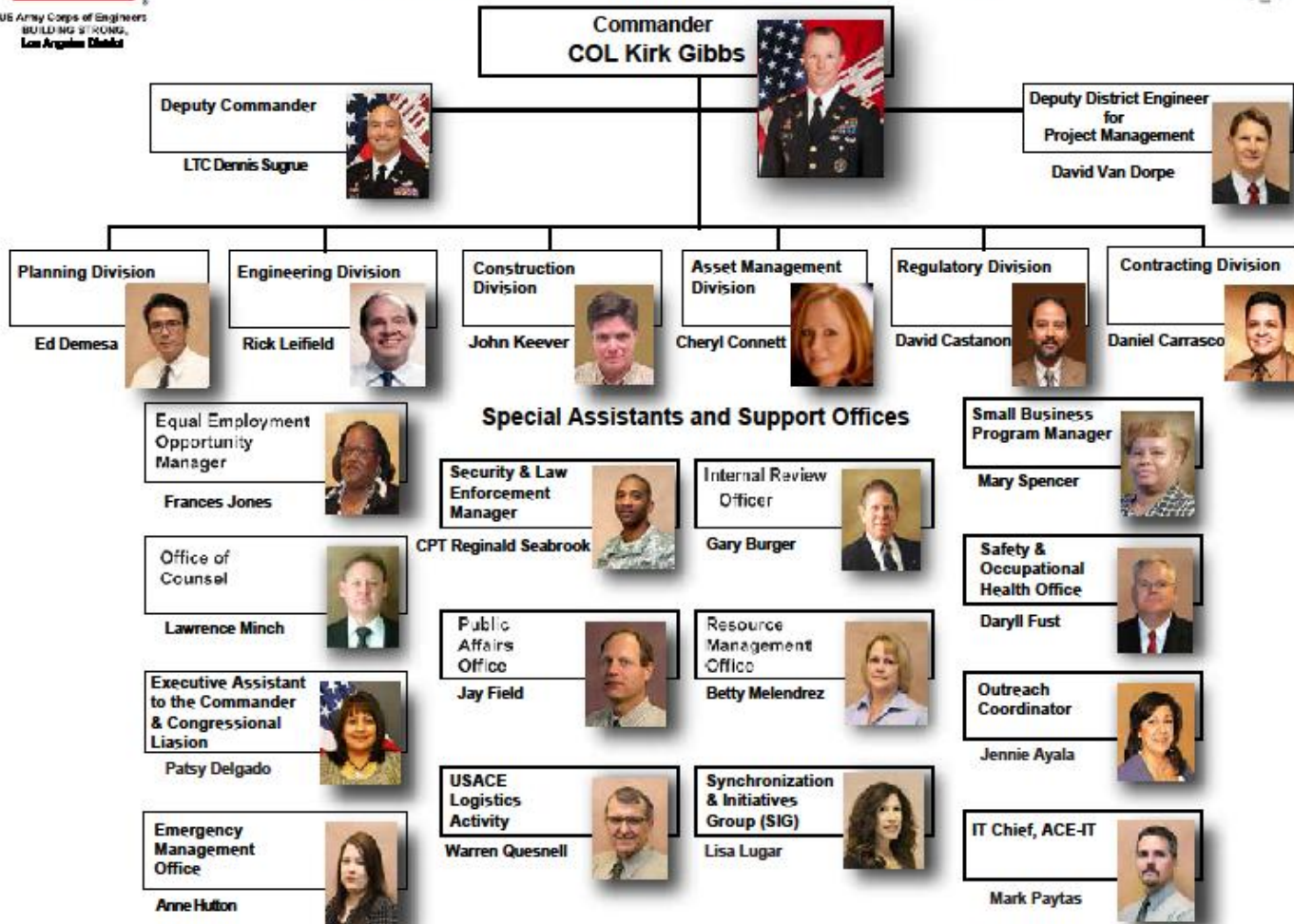


US Army Corps of Engineers
BUILDING STRONG



US Army Corps of Engineers
BUILDING STRONG[®]
Los Angeles District

District Organization



Los Angeles District Upcoming Military Programs FY16 Forecast

Project Name	Type/ Sub Type	**Set Aside Decision	Contracting Method	Estimated Advertising Date	Contract Value
Visitor's Quarters, Davis-Monthan AFB, AZ	Military	UNR - NAF (non- appropriated funds)	DBB, Best Value Trade Off	1/27/16	\$25M-\$30M
Davis-Monthan AFB –HC 130J Wash Rack	Military	SB Set Aside	DB, RFP	1/14/16	\$10M-\$20M
Davis-Monthan AFB –HC 130J AGE Storage	Military	SB Set Aside	DDB, RFP	1/31/16	\$10M-\$20M
Luke AFB – F35 Aircraft Maintenance Hanger(Squad #3)	Military	TBD	DBB, RFP	4/8/16	\$15M-\$20M
Luke AFB – F35 Squad Ops/AMS/Hanger Squad #4)	Military	TBD	DB, RFP	3/8/16	\$20M-\$40M

Los Angeles District Upcoming Military Programs FY16 Forecast

Project Name	Type/ Sub Type	**Set Aside Decision	Contracting Method	Estimated Advertising Date	Contract Value
Luke AFB –F35 Offload Facility	Military	SB Set Aside	DBB, RFP	7/7/16	\$5M-\$10M
Luke AFB –F35 Bomb Build-Up	Military	SB Set Aside	DB, RFP	7/13/16	\$5M-\$10M
Nellis AFB -F35A Munitions Maintenance Facilities	Military	SB Set Aside	DB, RFP	2/12/16	\$2M-\$5M
Nellis AFB -F35A Airfield Pavements	Military	UNK	DBB, RFP	6/13/16	\$20M-\$40M
Nellis AFB -F35A Live Ordnance Loading Area	Military	UNK	DB, RFP	5/12/16	\$20M-\$40M
Edwards AFB Combined Test Force (CTF) Compound	Military	UNK	DB, RFP	7/31/16	\$50M-\$100M



Los Angeles District Military Programs FY16 Forecast

Project Name	Type/ Sub Type	**Set Aside Decision	Contracting Method	Estimated Advertising Date	Contract Value
Nellis AFB – Replace Hydrant Fuel System	Military	TBD	DBB, RFP	5/17/16	\$20M-\$40M
Davis Monthan AFB ECIP Buckeye Training	Military	SB Set Aside	DB RFP	7/8./6	\$1M-\$5M

***(subject to change without notice)**

****Planned set-aside decision. Market research will be conducted to verify planned decision. The results and analysis of the market research may change the set-aside decision. More specific information relating to any individual item or class of items will not be furnished until the proposed action is synopsized through the GPE or the solicitation is issued.**



Los Angeles District IIS FY16 Forecast

Project Name	Type/ Sub Type	**Set Aside Decision	Contracting Method	Estimated Advertising Date	Contract Value
Psychiatry Expansion, VA Medical Center, San Diego, CA	IIS	SDVOSB	DBB –RFP- LPTA	Currently advertised	\$5-10 million
Numerous Environmental projects	IIS	8 (a)	MESA	1 st Qtr FY16	\$ 1-5 million
Boilers, NASA, Vandenberg, CA	IIS	8TBD	TBD	2 nd Qtr FY16	< \$1 million
AJO and Papago Farms Wells	IIS	TBD	TBD	Spring 2016	< \$1 million

***(subject to change without notice)**

****Planned set-aside decision. Market research will be conducted to verify planned decision. The results and analysis of the market research may change the set-aside decision. More specific information relating to any individual item or class of items will not be furnished until the proposed action is synopsisized through the GPE or the solicitation is issued.**



Los Angeles District IIS FY16 Forecast

Project Name	Type/ Sub Type	**Set Aside Decision	Contracting Method	Estimated Advertising Date	Contract Value
I-8 Check Point, San Diego CA	IIS	SB	DBB	Jan 2016	\$1-5 million
IFT AJO and Casa Grand Roads Seles AZ	IIS	TBD	DBB	Summer 2016	\$15-25 million
IFT Vamori Wash Seles AZ	IIS	TBD	DBB	Summer 2016	\$5-10 million
El Centro CA BPS Security Upgrade, El Centro CA	IIS	8(A)	DBB	March 2016	\$1-5 million
Calexico Utility Upgrade, Calexico CA	IIS	TBD	DBB	Summer- Fall 2016	\$1-5 million

*(subject to change without notice)

**Planned set-aside decision. Market research will be conducted to verify planned decision. The results and analysis of the market research may change the set-aside decision. More specific information relating to any individual item or class of items will not be furnished until the proposed action is synopsized through the GPE or the solicitation is issued.



BUILDING STRONG® - TOGETHER

Los Angeles District IIS FY16 Forecast

Project Name	Type/ Sub Type	**Set Aside Decision	Contracting Method	Estimated Advertising Date	Contract Value
Station Parking and Access Roads Calexico BPS	IIS	TBD	TBD	Summer 2016	\$1-5 million
I-5 Sign replacement, Mile marker 65.	IIS	8(A)	DBB	Winter 2016	\$1-5 million
Douglas Emergency Generator, Douglas AZ	IIS	TBD	TBD	Spring 2016	< \$1 million
AJO Station Demo, AJO AZ	IIS	TBD	TBD	Spring 2016	< \$1 million

*(subject to change without notice)

**Planned set-aside decision. Market research will be conducted to verify planned decision. The results and analysis of the market research may change the set-aside decision. More specific information relating to any individual item or class of items will not be furnished until the proposed action is synopsisized through the GPE or the solicitation is issued.



Los Angeles District IIS FY17 Forecast

Project Name	Type/ Sub Type	**Set Aside Decision	Contracting Method	Estimated Advertising Date	Contract Value
New Building March AFB	IIS	TBD	TBD	FY 17	\$5 -10 million
Naco Border Fence	IIS	TBD	TBD	FY17	\$ > \$40 million
Brownsfield BPS	IIS	TBD	TBD	FY17	\$ > \$40 million
San Pedro Renovation	IIS	TBD	TBD	FY17	\$ 20 – 40 million
Close El Centro ICE Facility	IIS	TBD	TBD	FY 17	\$1-5 million
Cemetery Expansion, NCA, Phoenix, AZ	IIS	SDVBE	TBD	FY17	\$ 5-10 million

*(subject to change without notice)

****Planned set-aside decision. Market research will be conducted to verify planned decision. The results and analysis of the market research may change the set-aside decision. More specific information relating to any individual item or class of items will not be furnished until the proposed action is synopsisized through the GPE or the solicitation is issued.**



Los Angeles District Civil Works FY16 Forecast

Project Name	Type/ Sub Type	**Set Aside Decision	Contracting Method	Estimated Advertising Date	Contract Value
Santa Ana River Mainstem, Reach 9 Ph-5B	Civil	UNR	RFP	9/16/16	\$20-\$30M
Pismo Beach – Shore protection -	Civil	Small Business	2-Phase DB RFP	10/15/15	\$1-\$3M
Oceanside Harbor Maintenance Dredging	Civil O&M	Unknown	IFB	1/14/16	\$10-\$15M
Marina Del Rey Dredging (CA)	Civil	TBD	IFB	TBD	\$1.0-\$5.0M
Ventura Harbor Dredging	Civil	TBD	IFB	TBD	\$5.0-\$10M

*(subject to change without notice)

**Planned set-aside decision. Market research will be conducted to verify planned decision. The results and analysis of the market research may change the set-aside decision. More specific information relating to any individual item or class of items will not be furnished until the proposed action is synopsised through the GPE or the solicitation is issued.



Los Angeles District Civil Works FY16 Forecast

Project Name	Type/ Sub Type	**Set Aside Decision	Contracting Method	Estimated Advertising Date	Contract Value
Hydrology & Hydraulic - IDIQ	Civil	TBD	RFP	TBD	\$1.0-\$5.0M
Geotechnical Services	Civil	SB Set Aside	RFP	TBD	\$5.0-\$10M
Geotechnical Services	Civil	Unrestricted	RFP	TBD	\$5.0-\$10M

***(subject to change without notice)**

****Planned set-aside decision. Market research will be conducted to verify planned decision. The results and analysis of the market research may change the set-aside decision. More specific information relating to any individual item or class of items will not be furnished until the proposed action is synopsisized through the GPE or the solicitation is issued.**



UPCOMING OUTREACH EVENT

- SAME 2015 Small Business Conference, November 4-6, 2015 - New Orleans Convention Center, New Orleans, La. commemorating the 10th Anniversary of Hurricane Katrina <http://s3.goeshow.com/same/business/2015/index.cfm>.
- National Veterans Small Business Engagement, November 17-19, 2015, Pittsburgh, PA, David L. Lawrence Convention Center. <http://nvsbe.com/>.
- San Francisco Business Opportunities Open House, October 22, 2015, Bay Model Visitors Center, Sausalito, CA



SAVE THE DATE

10 November 2015

SACRAMENTO DISTRICT OPEN HOUSE
The Grand - 1215 J Street, Sacramento CA
Please RSVP to Sacramento District Small
Business Deputy – Michelle Stratton

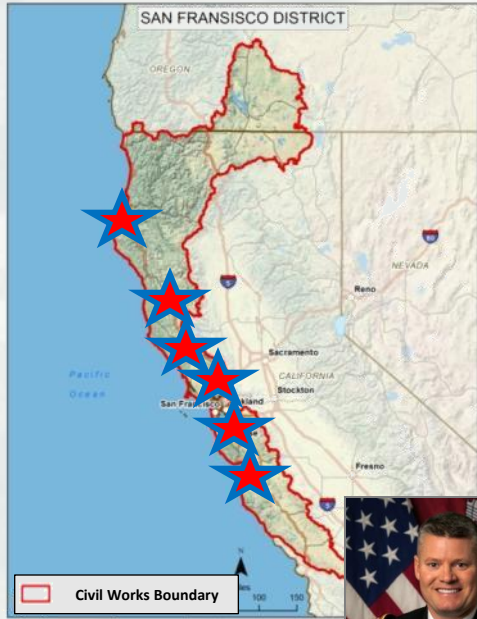
michelle.d.stratton@usace.army.mil

(916) 557-7641 for any questions

Networking and Training Classes provided
2 sessions – 0900 – 1200 and 1300 – 1600



San Francisco District



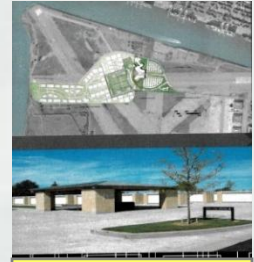
★ Corresponds to major locations and projects in the District.



M/V Dillard (Debris Removal)



New Renewable Energy Projects



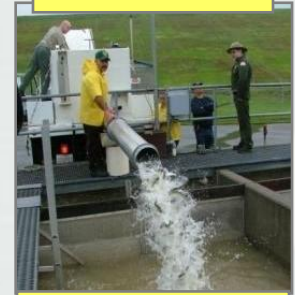
New VA Facilities



Ecosystem Restoration Projects



California Navigation Channel Dredging



Fish Recovery and Lake Operations

Long-Term Outlook

- Dredging requirements are not decreasing
- Initiatives to increase the beneficial reuse of dredging material
- Ecosystem restoration projects are becoming more prevalent
- Further development of renewable energy sources on USACE properties (solar and low flow hydro-turbine generators)
- Increase in partnerships with other Federal Agencies (VA, DoE, GSA, NASA, etc.)
- Maintenance opportunities on our vessels (survey and debris)
- Maintenance and custodial opportunities at our facilities

Command Team

Commander & District Engineer
LTC John Morrow

Deputy District Engineer for
Project Management
Mr. Arijis Rakstins, PMP



BUILDING STRONG. TOGETHER

San Francisco District FY16 Contract Opportunities

<u>Location</u>	<u>Value</u>	<u>Set-aside</u>	<u>Release Date</u>
▪ Hydraulic & Hydrology & Geomorphology	\$5M - \$10M	1-SB 1-UNR	2 nd QTR
▪ Hydrographic & Topographic	\$5M – \$10M	1-SB 1-UNR	2nd QTR
▪ Geotechnical & Structural Analysis Design	\$5M – \$10M	1-SB 1-UNR	2 nd QTR
• Civil & Architectural	\$5M – \$10M	1-SB 1-UNR	2nd QTR



San Francisco District FY16 Contract Opportunities

<u>Location</u>	<u>Value</u>	<u>Set-aside</u>	<u>Release Date</u>
▪ Dredging			
▪			
▪ Noyo Harbor	\$1M - \$4M	SB	4 th Quarter
▪ Richmond Harbor	\$9M - \$12M	UNR	4 th Quarter
▪ Redwood City Harbor	\$1M - \$4M	SB	4 th Quarter
▪ Central Basin	\$6M - \$9M	SB	4 th Quarter
▪ Oakland Harbor 50'	\$500K - \$1.5M	SB	4 th Quarter
▪ Berryessa Creek	\$9M - \$12M	UNR	4 th Quarter

