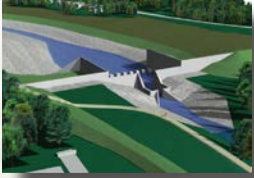




U.S. ARMY CORPS OF ENGINEERS

BUILDING STRONG



The Kansas City District can be a “one stop shop” for Value Engineering. With in-house capacity of experienced technical staff who are Associate Value Specialist (AVS) certified, or have successfully completed SAVE International Module 1 Training, the district can be your resource for meeting any level of your Value Engineering needs. The district can facilitate, provide team members, access nationally known Value Engineering consultants or lead the entire study effort.

With a strong Value Engineering history, the Kansas City District continues with a robust program for the District and beyond. Currently, the district staffs eleven Associate Value Specialist certified facilitators and has three existing indefinite delivery Value Engineering contracts, with more than \$10 million in remaining capacity.

Through 2013, the district has either facilitated or overseen A-E facilitation of multiple Value Engineering studies; performing 15 value engineering studies since 2011 and seven A-E VE studies since 2012 with in-house staff.

With a pragmatic approach to Value Engineering, the district’s process is compliant with U.S. Army Corps of Engineers regulations, Office of Management and Budget circulars and federal law. While maintaining that compliance, the district also emphasizes producing an effective VE study report proportionate to the contract complexity and cost. Each study team involves at least partial advisory involvement of the design team lead or other primary designer. This keeps the evaluation phase of the study focused within constraints that impacted the team. However, experienced designers outside of the team assure a wide range of creativity during the study. The goal of each study is to recommend effective ideas with the highest likelihood of team acceptance.

The Kansas City District is the recipient of the 2012 D’Il isola award for Value Engineering Excellence. The award for this civil works project was initially a large concrete grade control structure design that did not fully meet the sponsor’s expectations. By implementing the value methodology in a multi-organizational study, the alternative design developed exceeded the sponsor’s expectations, was praised by stakeholder, and saved approximately \$30 million compared to the original design.

Study teams are accustomed to the SAVE International six step methodology and can efficiently focus on the creative core of the process. More than 20 staff have completed the SAVE International Module 1 Training allowing ability to provide a quality draft study report within one day of completing the study and will provide a final report within 10 days of receiving comments on the draft report.

Value Engineering is an important part of the Kansas City District’s design processes and adherence to mandated requirements will continue to be scrutinized during national, regional, and district level audits. The district’s Value Engineering can support any level to assure that designs are the best value for the Corps of Engineers and the Nation, as well as meeting federal requirements.

The district is ISO 9000 certified which benefits the Value Engineering program documenting clear procedures and rules for the application and implementation assuring a timely and quality product. The Kansas City District can provide a “one stop shop” for Value Engineering needs.

Key Messages

- The district can meet any Value Engineering needs from providing team members for a local study to leading an entire effort
- The district has 11 AVS (Associate Value Specialist, SAVE International) certified staff and over 20 staff with SAVE International Module 1 training certificates
- Draft Value Engineering study reports will be delivered within one day of the conclusion and Final study reports will be submitted within 7 days of receiving comment

U.S. ARMY CORPS OF ENGINEERS – Kansas City District, Northwestern Division

601 East 12th Street, Kansas City, MO 64106

<http://www.nwk.usace.army.mil>

December 2013