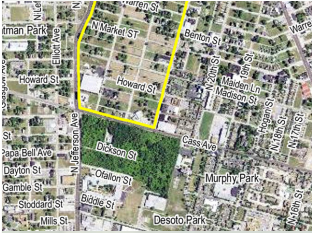




St. Louis City



The Next National Geospatial-Intelligence Agency West (N2W) campus is required to replace mission critical 2nd Street facilities in St. Louis, Missouri that have exceeded their service life.

The project will accommodate new technologies and processes that generate beneficial synergies through integration, collaboration and geospatial data immersion. The facility will provide an open flexible work environment that is scalable, reconfigurable, and adaptive to changing mission requirements and the associated changes in workflow and data sharing methodologies. The project will provide NGA's workforce with safe, secure, and efficient facilities that meet the agency's long-term requirements and vision for Geospatial-Intelligence and will be consistent with the Director of National Intelligence facilities strategic plan.

St. Clair County

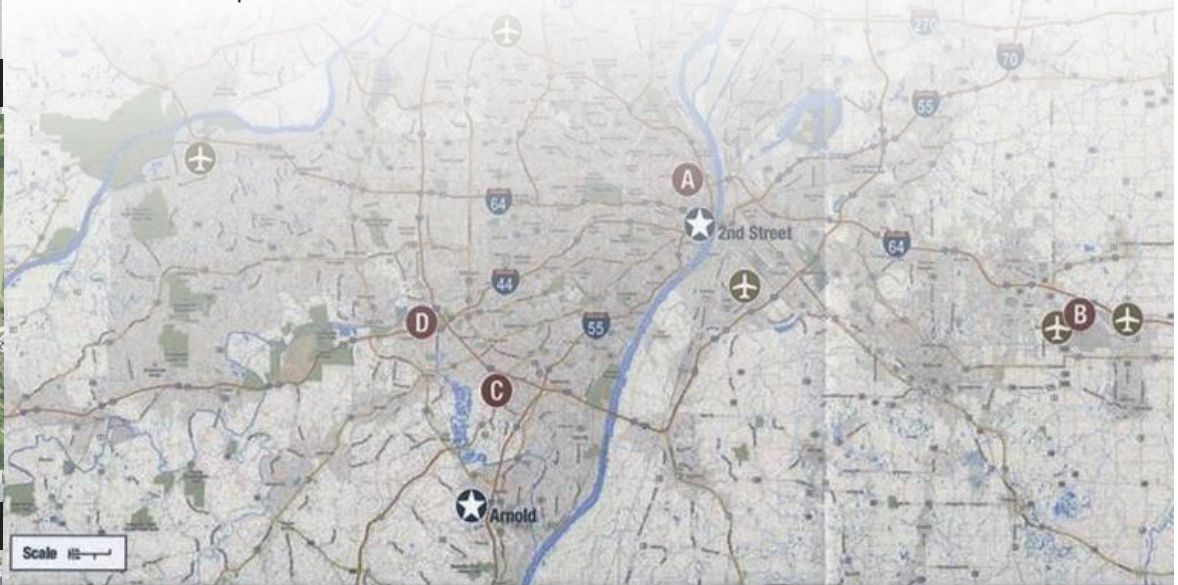


The architectural program includes construction of an 800,000 square foot Sensitive Compartmented Information Facility rated intelligence processing center, Central Utility Plant, Visitor Control Center, Remote Inspection Facility, structured parking with required secure telecommunications, utilities, site improvements, security systems necessary for a complete and usable facility. Following the St. Louis metropolitan area site selection in the spring of 2016, the project is tentatively programmed for construction in the late 2017 through 2022. The construction services are an unclassified requirement.

Mehlville



Fenton



Point Of Contact:
Chris Prinslow
Program Manager
816-389-3173

Key Messages

- Initiated site selection process in 2012; selection will occur in April 2016
- Construction funding will be phased vs incremental
- Lessons Learned from NGA's Campus East facility, built as part of Base Realignment and Closure (BRAC) 2005, have aided in the planning and development of strategies for this project

Facts & Figures

- \$985M Program Amount
- Operational 2023
- Four sites currently in consideration