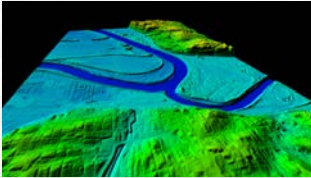




The Geospatial Branch is a team of geospatial specialists consisting of geographers, cartographers and physical scientists that provide geospatial consulting services and integrates geospatial technology into the project management business process. This team conducts enterprise geographic information system (eGIS) needs assessments, develops eGIS implementation plans and implements eGIS technology and work processes. Additionally, the team develops decision-making tools and procedures that facilitate the widespread use of geospatial data leading to greater efficiencies in support of customer needs and performs spatial analysis and data modeling.



Kansas City District Geospatial Branch Overview:

- Team of 18 geospatial professionals augmented by two Indefinite Delivery/Indefinite Quantity survey and mapping contracts consisting of: Certified Geographic Information Systems Professionals (GISP); Registered Land Surveyor; Project Management Professional; Contracting Officer Representative; and diverse advanced degrees
- Provides diverse experiences supporting geospatial needs of U.S. Army Corps of Engineers Civil Works, Military, Environmental and Emergency Response missions
- Maintains strong, proven relationships with staff from other U.S. Army Corps of Engineers Districts, involving them as needed to minimize project schedules
- Offers multi-platform capabilities with mainstream commercial Computer Aided Design & Drafting, Building Information Modeling and Geographic Information Systems applications
- Maintains significant experience managing large geospatial projects nationwide
- Maintains experience implementing Computer Aided Design & Drafting, Building Information Modeling, and Geographic Information Systems technologies, standards and training
- Supports significant programs including: Modeling, Mapping and Consequences Production Center; Missouri River Recovery Program; National Levee Database; and several regional military installation construction and environmental projects

MISSION STATEMENT: Provide integration of geospatially enabled analysis to support engineering, environmental and asset management for the U.S. Army Corps of Engineers.

VISION STATEMENT: The Geospatial Branch will leverage a multitude of analytical processes and tools to conduct advanced analytical and surveying support to various civil works, military installation management, environmental, hydrological and natural resource programs.

Key Messages	Facts & Figures
<ul style="list-style-type: none"> ● Full Service Staff of Geospatial Professionals (Geographic Information Systems, Data Management, Surveying, Building Information Modeling, Computer Aided Design & Drafting) ● Geospatial, Mapping and Surveying project management ● Multi-platform capability with mainstream commercial Computer Aided Design & Drafting, Building Information Modeling, and Geographic Information Systems applications ● Advanced analytical and modeling processes ● Significant experience managing large geospatial projects nationwide 	<ul style="list-style-type: none"> ● 18 Geospatial Professionals ● In-house Survey Team ● Indefinite Delivery/Indefinite Quantity (IDIQ) Survey and Mapping Contract Vehicles Available

Point of Contact:
 Brian VanBockern
 Chief, Geospatial Section
 816-389-3965