

U.S. Army Corps of Engineers

St. Louis District & Contractor Partnership Symposium

“How to do Business with the Corps of Engineers”

- Illinois Procurement Technical Assistant Center (PTAC)
- Small Business Administration
- Southern Illinois Builders Association
- Leadership Council Southwestern Illinois

Southwestern Illinois College
April 2, 2015



®

US Army Corps of Engineers
BUILDING STRONG®



Agenda

- Opening Remarks
- Welcome from COL Anthony Mitchell
- District Overview
- Break
- Southern Illinois Builders Association (remarks)
- Illinois Procurement Technical Assistant Center (overview)
- Small Business Administration (overview)
- Break
- How to do Business with COE



Welcome

COL Anthony Mitchell

District Engineer, St. Louis District, USACE



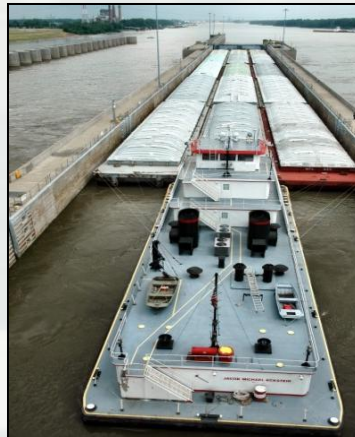
St. Louis District Value to the Nation

Provide engineering and water resource solutions that improve safety, energize the economy, sustain the environment and enhance the quality of life for those we serve through expertise, innovation, and partnerships.



SAFETY

Emergency
Operations
Flood Fight
FUSRAP



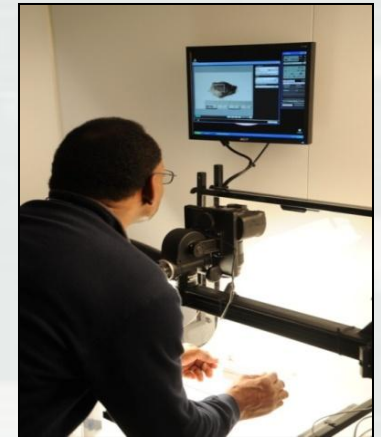
ECONOMY

Navigation
Hydropower
Recreation
Flood Risk Management



QUALITY OF LIFE

Regulatory
Environmental
Stewardship
Water Supply
Ecosystem Restoration



INNOVATION

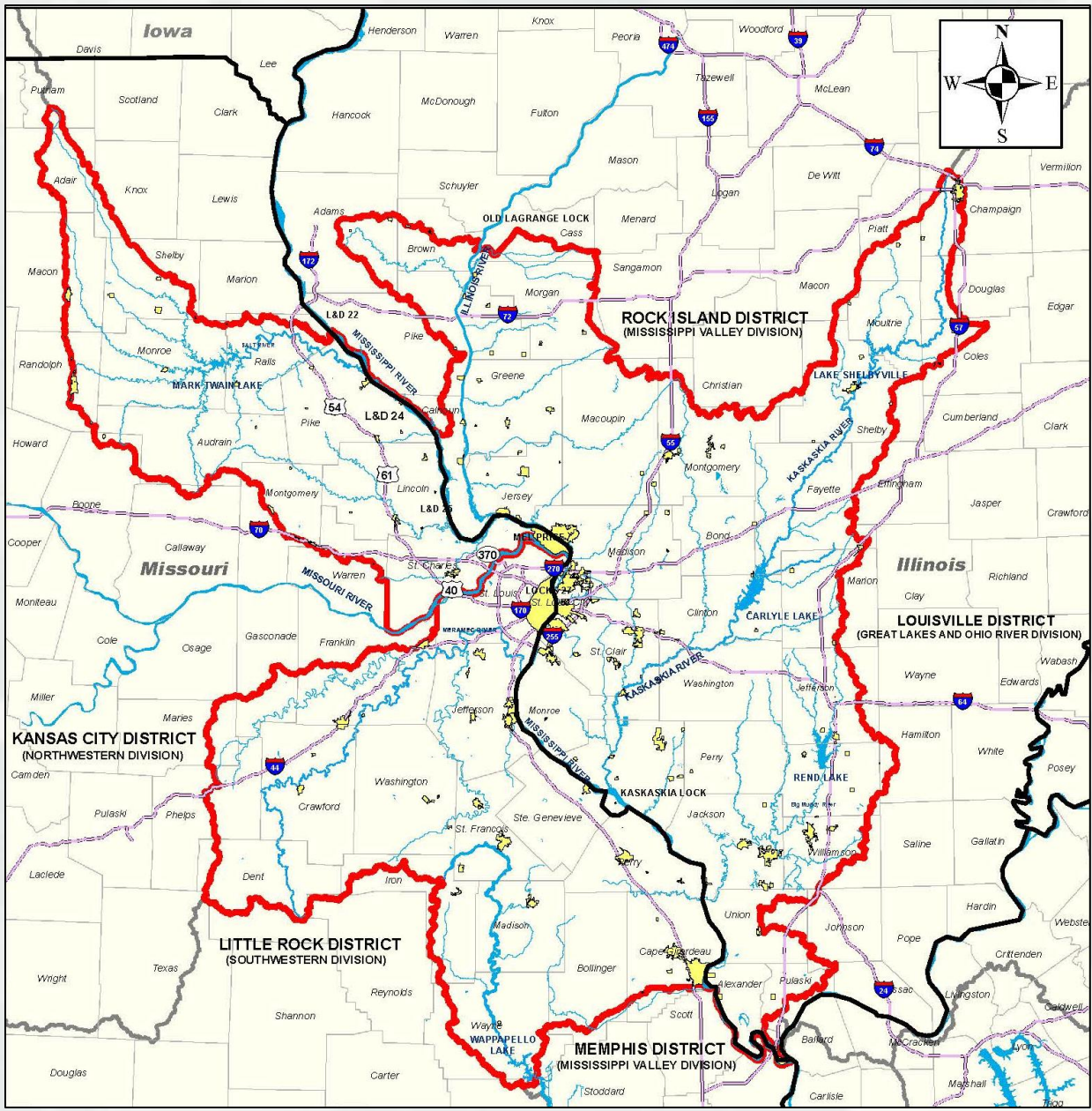
Centers of Expertise
Veterans Curation
Program

**St. Louis District
Value to the Nation**



BUILDING STRONG®

- 10 rivers
- 5 lock & dam sites
- 5 Corps lakes
- 750 miles of levees
- 92 flood control systems
- 416 miles of navigable channel
- 70 pumping plants
- 162 recreation areas
- 1 hydropower plant



**St. Louis District
Value to the Nation**

BUILDING STRONG®

St. Louis District Overview

Mike Feldmann

Chief of Programs and Project Management

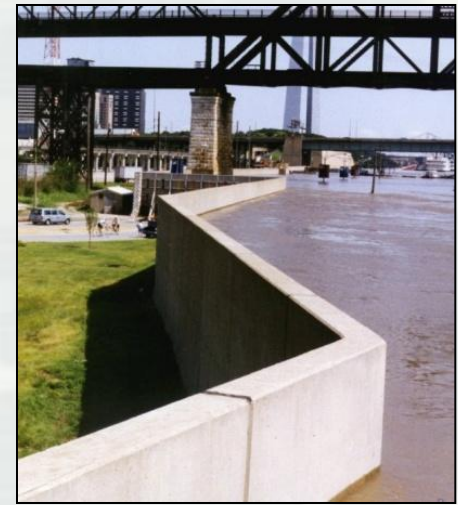


SAFETY

Flood Risk Management

USACE works with our sponsors and partner agencies to plan, design, construct, operate, and maintain our flood risk management infrastructure. Current significant projects are:

- The Metro East Levee system, which protects over 300,000 people and major industrial, commercial, and residential property valued at over **\$7.2 billion**.
- St. Louis Flood Protection project, which protects over 3,000 acres of industrial and commercial property in the heart of St. Louis.
- During the 2013 floods, USACE tributary reservoirs and federal levee systems **prevented more than \$3.4 billion in damages** in the St. Louis region.



Flood of 1993, St. Louis flood wall.

Emergency Operations

The district maintains full readiness to respond to disasters locally and around the world. In any disaster, the top three priorities are:

- Support immediate emergency response priorities
- Sustain lives with flood fighting
- Initiate recovery efforts

FUSRAP

Formerly Utilized Sites Remedial Action Program protects human health and the environment by addressing the risks at designated sites contaminated with radioactive waste from the Nation's early atomic weapons development and production activities. More than 1 million cubic yards of soil have been remediated by St. Louis District since 1997.



General Peabody, flood fight 2013.

Remediation at FUSRAP St. Louis Downtown Sites



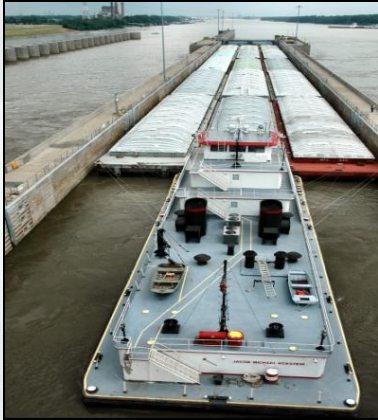
St. Louis District
Value to the Nation

BUILDING STRONG®

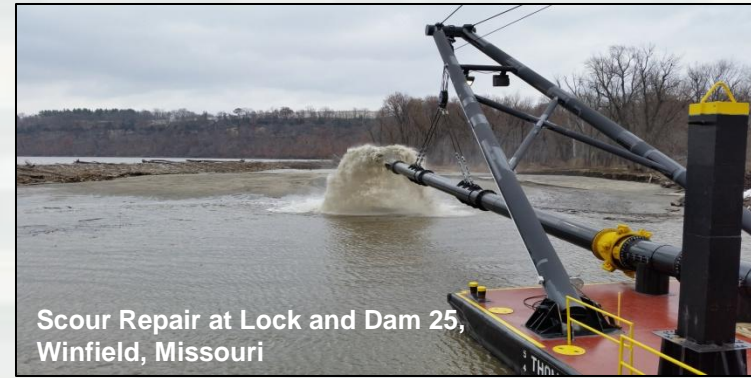
ECONOMY

Navigation

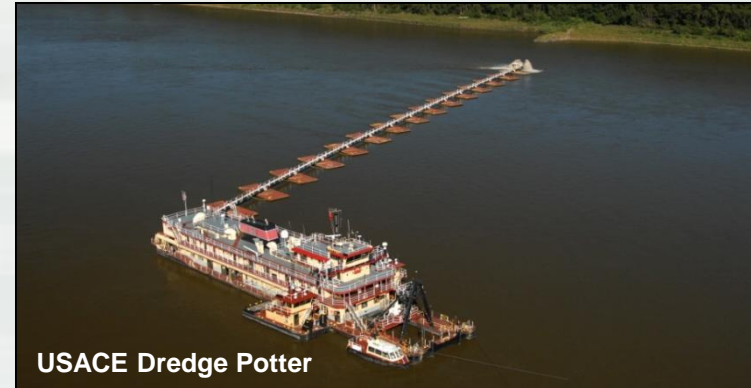
Through effective water management, operation and maintenance of a Lock and Dam system, channel maintenance, and innovative River Engineering, St. Louis District balances diverse needs of Mississippi River stakeholders to promote the effective transportation of nearly 100 million tons of commodities through St. Louis Harbor each year. The national system moves over 500 million tons, creating an economic impact of more than \$180 billion annually.



Mel Price Locks and Dam, Alton, Illinois.



Scour Repair at Lock and Dam 25, Winfield, Missouri



USACE Dredge Potter



River training structures on the Middle Mississippi River.

River training structures create a self-sustaining navigation channel by using the energy of the water to predictably move sediment saving millions in dredging costs each year. With a high benefit to cost ratio, these structures enhance safety by improving navigation and providing ecosystem diversity.

**St. Louis District
Value to the Nation**



BUILDING STRONG®

ECONOMY

Hydropower

The Hydropower program provides clean, reliable power services at the lowest possible cost.

Hydropower customers provide funding for over \$4.6 million in needed projects at Clarence Cannon Dam. This renewable energy source saves the Nation the equivalent of an estimated 225,000 barrels of fuel oil, or 68,000 tons of coal, or 1.1 billion cubic feet of natural gas.



Hydropower plant, Clarence Cannon Dam, Monroe City, Missouri.



St. Louis District has a 141-mile National Water Trail on the Mississippi River.

Recreation

With the support of a diverse set of partners, St. Louis District provides the public with healthy, safe, affordable, high quality outdoor recreation opportunities that generate substantial economic benefits and support healthy lifestyles. Each year, St. Louis projects host 17 million visitors who spend more than \$421 million and help support more than 6,700 local jobs.

St. Louis District
Value to the Nation



BUILDING STRONG®

QUALITY OF LIFE

Regulatory

In 2014 the Regulatory Branch issued over 1,100 Clean Water Act permits and resolved over 35 violations of the Clean Water Act. These permit decisions allowed significant but reasonable economic development in the region while protecting the aquatic environment.

Ecosystem Restoration

The Ecosystem Restoration program implements projects that improve, protect, restore and create fish and wildlife habitats. Over 8,000 acres of habitat are presently under construction within the St. Louis District.



Wetlands, West Alton, Missouri.



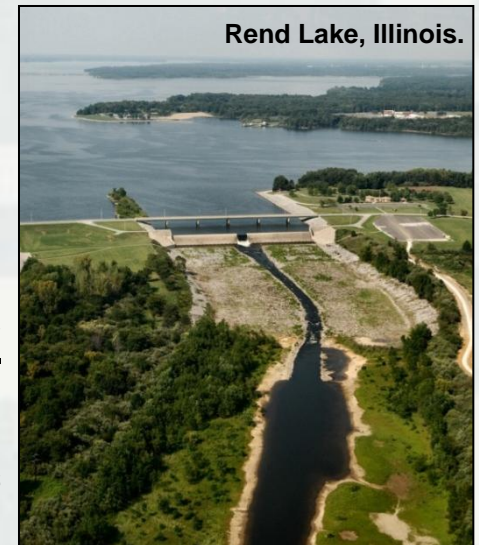
A rehabilitated hawk is released at Riverlands Migratory Bird Sanctuary.

Environmental Stewardship

The St. Louis District is responsible for the protection and monitoring of over 2,800 historic property sites, 119 state-listed, 13 federally-listed threatened or endangered species of plants and wildlife, and for the care and management of over 263,000 acres of land, of which 150,000 of those acres are wetlands.

Water Supply

The St. Louis District helps provide cost effective municipal and industrial water to the region through 186,406 acre-feet of storage space at four lake projects.



Rend Lake, Illinois.

St. Louis District
Value to the Nation

BUILDING STRONG®



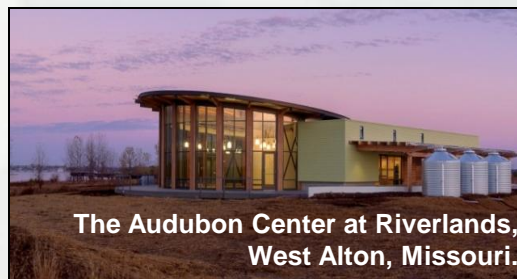
St. Louis District INNOVATION



Removing low-level radioactive contamination.



Hydraulic Sediment Response (HSR) model.



The Audubon Center at Riverlands,
West Alton, Missouri.

**Automated Performance
Monitoring of Dams**

Mandatory Center of Expertise
Curation & Management of
Archaeological Collections

Veterans Curation Program
Rope Inspection Team

Environmental and Munitions

**Formerly Utilized Sites Remedial
Action Program (FUSRAP)**

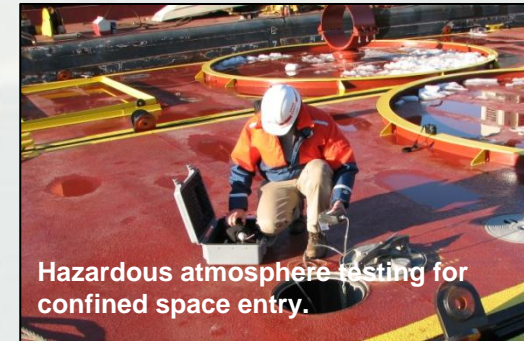
Applied River Engineering Center (AREC)

Geospatial Services

Photogrammetric Mapping Center of Expertise
Hydrographic Surveying Program

Partnering

Big River Joint Feasibility Study (USEPA)
Riverlands Migratory Bird Sanctuary



Hazardous atmosphere testing for
confined space entry.



MV Simpson II performing a
hydrographic survey.



Rope inspection team.

Value to the Nation

BUILDING STRONG®

Contracting Office

1. The only Warranted Contracting Officers can obligate or award a contract on behalf of the Federal Government. (The St. Louis District has three.)
2. The Contracting Officer is responsible for ensuring all contractual documents are compliant with all Federal Acquisitions Regulations and policies.
3. We work hand-in-hand with Legal and Resource Management to ensure all contractual documents are legally sufficient and the necessary funds are certified available before we sign the contract.



Potential Contracts FY 2015



BUILDING STRONG®



Navigation

FY 15 Potential Contracts

<u>Project:</u>	<u>Description:</u>	<u>Award Date:</u>	<u>Cost Range:</u>
Upper River, MRM 300-195 (O&M)	Dike & Revetment for the maintenance of existing river training structures and revetments	Jul-15	\$1-5M
Lower River, MRM 195-98.6 (O&M)	Dike & Revetment for the maintenance of existing river training structures and revetments	Aug-15	\$1-5M
Lower River, MRM 98.6-0 (O&M)	Dike & Revetment for the maintenance of existing river training structures and revetments	Aug-15	\$1-5M
Mosenthein Phase 5	Dike & Revetment for new river training structures and revetments	Sep-15	\$1-5M
Lock and Dam 25, Winfield, MO	Dam gates & service bridge painting and repair. 5-year IDIQ.	Sep-15	\$10-25M





February 2015
U.S. Army Corps of Engineers
St. Louis District
1222 Spruce Street
St. Louis, MO 63103-2833

Ecosystem Restoration

FY 15 Potential Contracts

<u>Project</u>	<u>Description</u>	<u>Advertise Date</u>	<u>Cost Range</u>
UMRR Ted Shanks Pump Station	Pump station (twin 30K gpm electric)	Aug-15	\$5-\$10M
Wappapello Gatehouse	Replace Doors and Windows		\$500K-\$1M
UMRR Clarence Cannon Exterior Berm Setback	Exterior berm setback (levee type earthwork and excavation)	FY-16	\$1-\$5M
UMRR Clarence Cannon, MO	South unit pump station delivery channels, interior and exterior water control structures	FY-16	\$1-\$5M
UMRR Clarence Cannon, MO	North unit interior water control structures and berm degrade	FY-16	\$1-\$5M
UMRR Clarence Cannon Pump Station	Pump station (twin 30K gpm)	FY-16	\$1-\$5M



BUILDING STRONG®



February 2015
U.S. Army Corps of Engineers
St. Louis District
1222 Spruce Street
St. Louis, MO 63103-2833

Flood Risk Management

FY 15 Potential Contracts

<u>Project</u>	<u>Description</u>	<u>Advertise Date</u>	<u>Cost Range</u>
Cape Girardeau	Toe Drain replacement; Service Contract for River bed exploration	FY15, 4 th Qtr.	\$100-500k
Monarch-Chesterfield	Watershed 4 Gravity Drains; Levee Raise at Pump Station 7; relief wells; pump station	FY15, 4 th Qtr.	\$1-4M





Future St. Louis A/E Contracts

Project	Amount	Contract Period	Advertise	Anticipated Award
Photogrammetric Mapping (10)	>\$10M	5 yrs	Advertised	FY 15-16
Field & Hydrographic Surveys (3)	\$1-5M	5 yrs	Advertised	FY15-16
Scanning Services	TBD	TBD	FY15	FY15
Cultural Resource Services (3)	TBD	1 (+2)	FY16	FY16





February 2015
U.S. Army Corps of Engineers
St. Louis District
1222 Spruce Street
St. Louis, MO 63103-2833

Supply & Service

<u>Project</u>	<u>Description</u>	<u>Advertise Date</u>	<u>Cost Range</u>
Carlyle Lake, IL	Gate Attendants Boulder (Weekdays & Weekends)	TBD	\$25-\$100K
	Visitor Center Attendants (Weekdays & Weekends)	TBD	\$25-\$100K
	Misc (Supply/Service/Construction)	FY15, 3rd Qtr.	\$100-\$500K
	Cleaning (Contractor - WDIA)	11-D-0519	
	Refuse Removal (Contractor – C&L Disposal)	14-D-0508	
	Mowing (Contractor – Big S Enterprise)	10D-0521	
	Road Maintenance (Contractor – DMs Contracting)	14-D-0505	
	Law Enforcement (Contractor – Clinton County)	13-G-0602)	



February 2015
U.S. Army Corps of Engineers
St. Louis District
1222 Spruce Street
St. Louis, MO 63103-2833

Supply & Service

<u>Project</u>	<u>Description</u>	<u>Advertise Date</u>	<u>Cost Range</u>
Lake Shelbyville, IL	Gate Attendants (Various Locations)	Various Contracts	
	Land Management (Contractor – Lilly Timber SVC)	14-D-0515	
	Misc (Supply/Service/Construction)	TBD	\$100-\$500K
	Solid Waste Removal (Contractor – Doty Sanitation)	11-D-0511	
	Facilities Maintenance (Contractor – Geotechnical Cons)	13-D-0510	
	Cleaning Services (Contractor – Lake Shelby Janitorial)	13-D-0512	
	WWT/LS Inspections (Contractor – William Schwenker)	12-V-3011	
	Law Enforcement (Contractor – City of Shelbyville)	12-V-3030	



February 2015
U.S. Army Corps of Engineers
St. Louis District
1222 Spruce Street
St. Louis, MO 63103-2833

Supply & Service

<u>Project</u>	<u>Description</u>	<u>Advertise Date</u>	<u>Cost Range</u>
Rend Lake, IL	Gate Attendants North / South Sandusky & Gun Creek		
	- Linda Austin, Deborah Hodge, James Leggans	14-P-1123; 14-P-1126; 11-P-1022	
	Misc (Supply/Service/Construction)	TBD	\$100-\$500K
	IQC Rec Cleaning (Contractor – LRL Commercial)	14-D-0516	
	Refuse Removal (Contractor – Si Waste)	13-D-0509	
	Mowing (Contractor – Endrizzi)	11-D-0522	
	Road Maintenance (Contractor – ILLINI Contracting)	12-D-0509	
	Law Enforcement (Contractor – Franklin County)	15-H-0047)	



February 2015
U.S. Army Corps of Engineers
St. Louis District
1222 Spruce Street
St. Louis, MO 63103-2833

Supply & Service

<u>Project</u>	<u>Description</u>	<u>Advertise Date</u>	<u>Cost Range</u>
Rivers Project Office West Alton, MO	Tree Planting (Lilly Timber Service)	14-D-0520	
	Land Repair Maintenance (Contractor – Wildman Cons)	14-D-0501	
	Misc (Supply/Service/Construction)	TBD	\$100-\$500K
	Vegetative Maintenance (Contractor – GPM, Inc.)	12-D-0505	
	Contract Hires (Contractor – Steve Johnson)	11-F-5035	
	Mastership Agreement (Contractor – JB Marine)	09-G-0601	
	Diving Contract	TBD	TBD
	Law Enforcement (Contractor – various)	90-H-0602	



February 2015
U.S. Army Corps of Engineers
St. Louis District
1222 Spruce Street
St. Louis, MO 63103-2833

Supply & Service

<u>Project</u>	<u>Description</u>	<u>Advertise Date</u>	<u>Cost Range</u>
Kaskaskia L&D, IL	Law Enforcement (Contractor – Randolph County)	13-G-0604	
	Dredging (Contractor – J D Summer)	12-D-0513	
	Misc (Supply/Service/Construction)	TBD	\$100-\$500K



BUILDING STRONG®