

U.S. Army Corps of Engineers

St. Louis District & Contractor Partnership Symposium

“How to do Business with the Corps of Engineers”

- St. Louis Minority Business Council
- Missouri Procurement Technical Assistant Center
- Small Business Administration

Engineering Center of St. Louis
October 23, 2015



®

US Army Corps of Engineers
BUILDING STRONG®



Agenda

- Opening Remarks (Glen Cherry)
- Welcome from COL Anthony Mitchell
- District Overview
- Break
- St. Louis Minority Business Council (remarks)
- PTAC (overview)
- SBA (overview)
- Break
- How to do Business with COE
(Are You Prepared?)



Welcome

COL Anthony Mitchell

District Engineer, St. Louis District, USACE



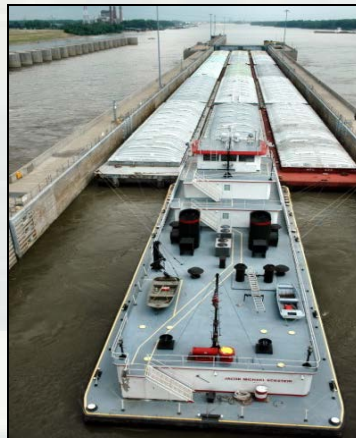
St. Louis District Value to the Nation

Provide engineering and water resource solutions that improve safety, energize the economy, sustain the environment and enhance the quality of life for those we serve through expertise, innovation, and partnerships.



SAFETY

Emergency
Operations
Flood Fight
FUSRAP



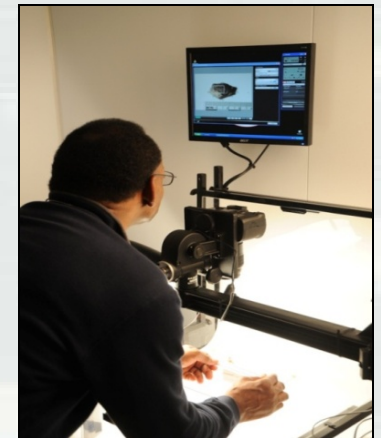
ECONOMY

Navigation
Hydropower
Recreation
Flood Risk Management



QUALITY OF LIFE

Regulatory
Environmental
Stewardship
Water Supply
Ecosystem Restoration



INNOVATION

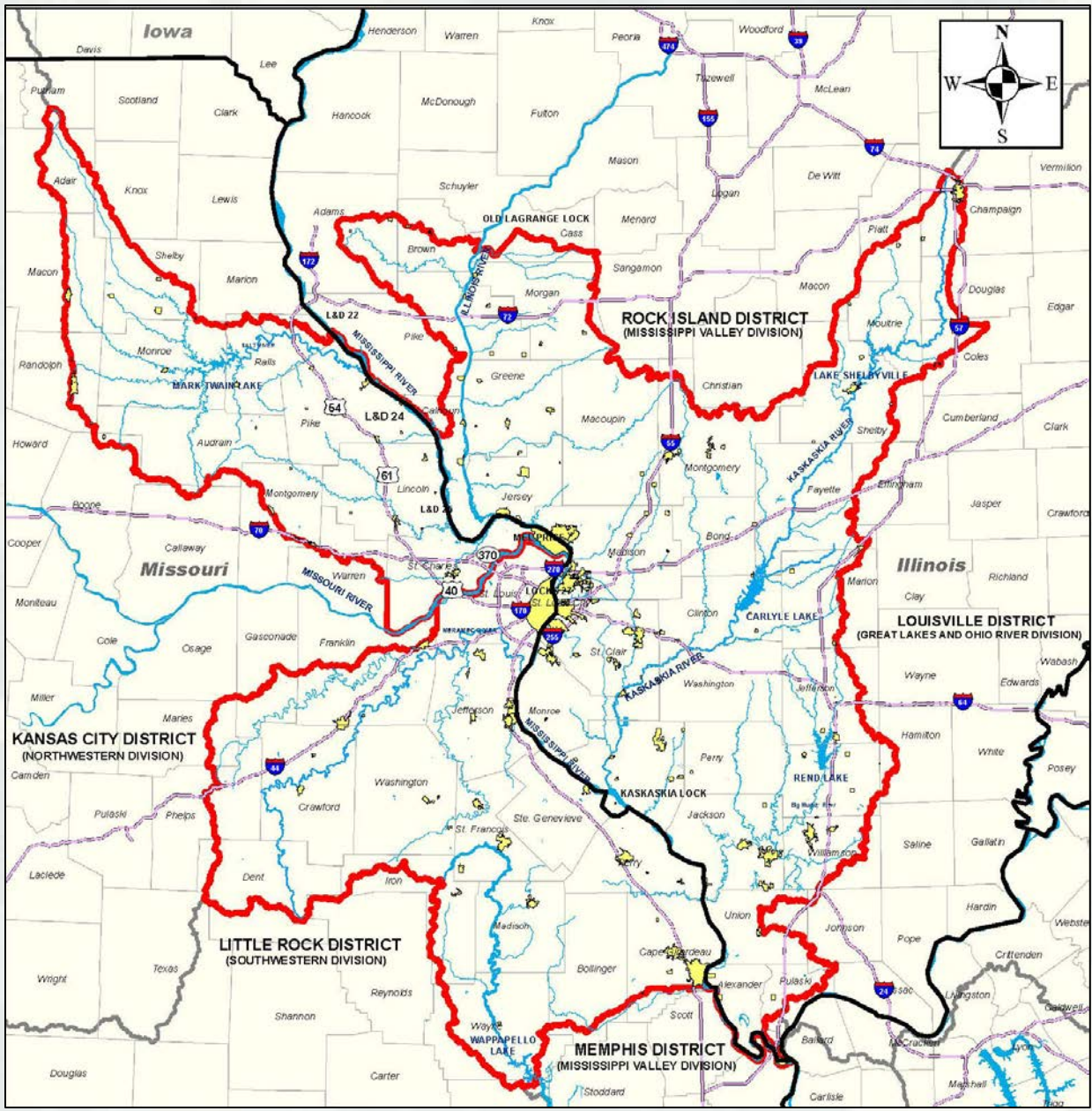
Centers of Expertise
Veterans Curation
Program

St. Louis District
Value to the Nation



BUILDING STRONG®

- 10 rivers
- 5 lock & dam sites
- 5 Corps lakes
- 750 miles of levees
- 92 flood control systems
- 416 miles of navigable channel
- 70 pumping plants
- 162 recreation areas
- 1 hydropower plant



**St. Louis District
Value to the Nation**

BUILDING STRONG®

St. Louis District Overview

Mike Feldmann

Director of Programs and Project Management

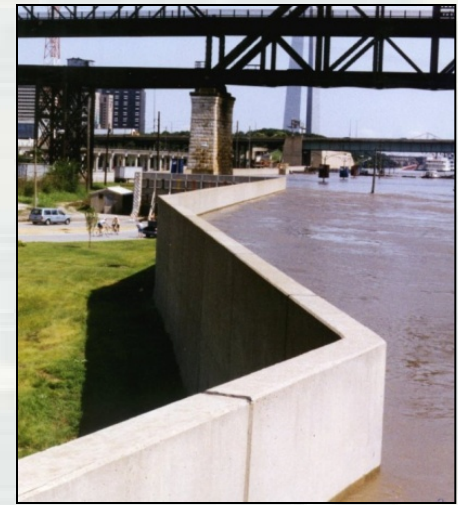


SAFETY

Flood Risk Management

USACE works with our sponsors and partner agencies to plan, design, construct, operate, and maintain our flood risk management infrastructure. Current significant projects are:

- The Metro East Levee system, which protects over 300,000 people and major industrial, commercial, and residential property valued at over **\$7.2 billion**.
- St. Louis Flood Protection project, which protects over 3,000 acres of industrial and commercial property in the heart of St. Louis.
- During the 2013 floods, USACE tributary reservoirs and federal levee systems **prevented more than \$3.4 billion in damages** in the St. Louis region.



Flood of 1993, St. Louis flood wall.

Emergency Operations

The district maintains full readiness to respond to disasters locally and around the world. In any disaster, the top three priorities are:

- Support immediate emergency response priorities
- Sustain lives with flood fighting
- Initiate recovery efforts

FUSRAP

Formerly Utilized Sites Remedial Action Program protects human health and the environment by addressing the risks at designated sites contaminated with radioactive waste from the Nation's early atomic weapons development and production activities. More than 1 million cubic yards of soil have been remediated by St. Louis District since 1997.



General Peabody, flood fight 2013.

Remediation at FUSRAP St. Louis Downtown Sites



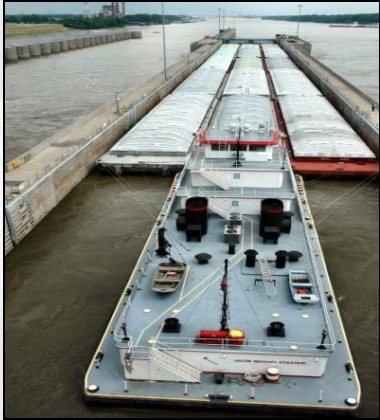
St. Louis District
Value to the Nation

BUILDING STRONG®

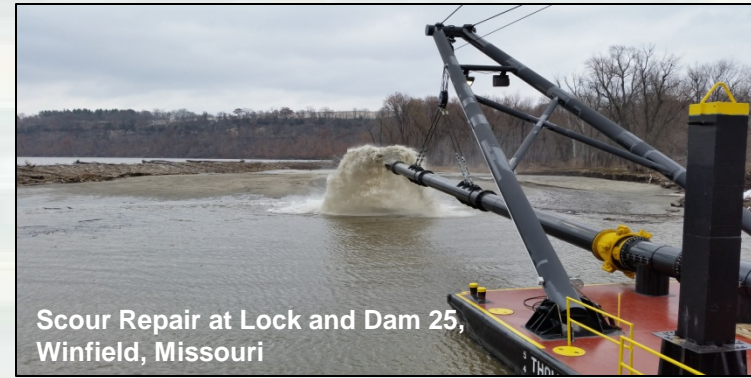
ECONOMY

Navigation

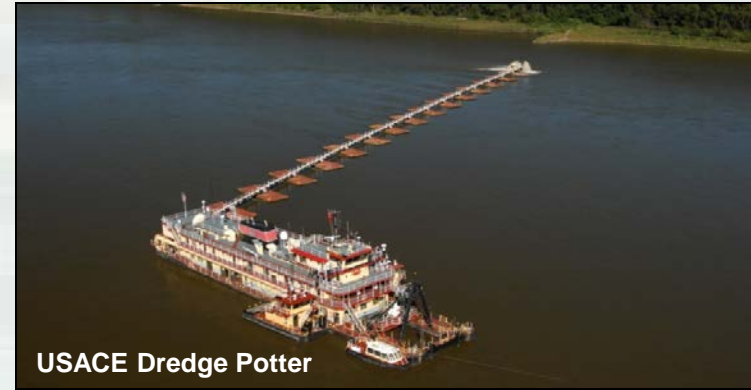
Through effective water management, operation and maintenance of a Lock and Dam system, channel maintenance, and innovative River Engineering, St. Louis District balances diverse needs of Mississippi River stakeholders to promote the effective transportation of nearly 100 million tons of commodities through St. Louis Harbor each year. The national system moves over 500 million tons, creating an economic impact of more than \$180 billion annually.



Mel Price Locks and Dam, Alton, Illinois.



Scour Repair at Lock and Dam 25, Winfield, Missouri



USACE Dredge Potter



River training structures on the Middle Mississippi River.

River training structures create a self-sustaining navigation channel by using the energy of the water to predictably move sediment saving millions in dredging costs each year. With a high benefit to cost ratio, these structures enhance safety by improving navigation and providing ecosystem diversity.

**St. Louis District
Value to the Nation**



BUILDING STRONG®

ECONOMY

Hydropower

The Hydropower program provides clean, reliable power services at the lowest possible cost.

Hydropower customers provide funding for over \$4.6 million in needed projects at Clarence Cannon Dam. This renewable energy source saves the Nation the equivalent of an estimated 225,000 barrels of fuel oil, or 68,000 tons of coal, or 1.1 billion cubic feet of natural gas.



Hydropower plant, Clarence Cannon Dam, Monroe City, Missouri.



St. Louis District has a 141-mile National Water Trail on the Mississippi River.

Recreation

With the support of a diverse set of partners, St. Louis District provides the public with healthy, safe, affordable, high quality outdoor recreation opportunities that generate substantial economic benefits and support healthy lifestyles. Each year, St. Louis projects host 17 million visitors who spend more than \$421 million and help support more than 6,700 local jobs.

**St. Louis District
Value to the Nation**



BUILDING STRONG®

QUALITY OF LIFE

Regulatory

In 2014 the Regulatory Branch issued over 1,100 Clean Water Act permits and resolved over 35 violations of the Clean Water Act. These permit decisions allowed significant but reasonable economic development in the region while protecting the aquatic environment.

Ecosystem Restoration

The Ecosystem Restoration program implements projects that improve, protect, restore and create fish and wildlife habitats. Over 8,000 acres of habitat are presently under construction within the St. Louis District.



A rehabilitated hawk is released at Riverlands Migratory Bird Sanctuary.

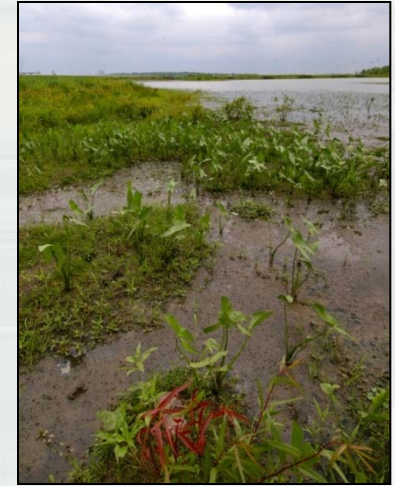
St. Louis District
Value to the Nation

Environmental Stewardship

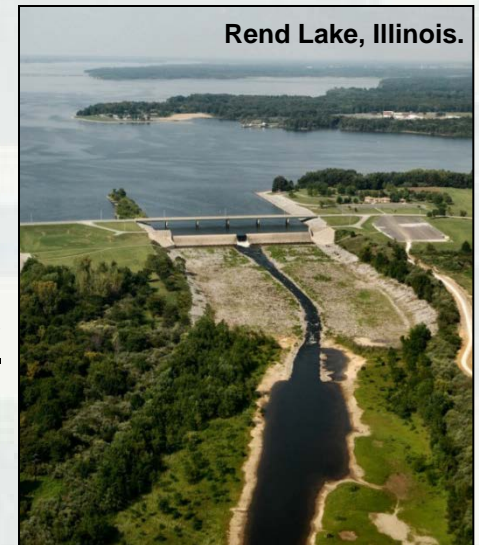
The St. Louis District is responsible for the protection and monitoring of over 2,800 historic property sites, 119 state-listed, 13 federally-listed threatened or endangered species of plants and wildlife, and for the care and management of over 263,000 acres of land, of which 150,000 of those acres are wetlands.

Water Supply

The St. Louis District helps provide cost effective municipal and industrial water to the region through 186,406 acre-feet of storage space at four lake projects.

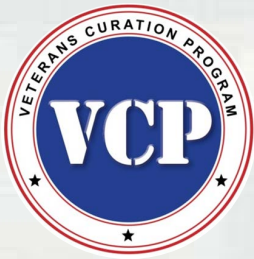


Wetlands, West Alton, Missouri.



Rend Lake, Illinois.

BUILDING STRONG®



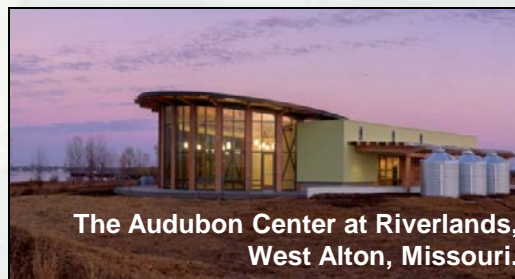
St. Louis District INNOVATION



Removing low-level radioactive contamination.



Hydraulic Sediment Response (HSR) model.



The Audubon Center at Riverlands,
West Alton, Missouri.

**Automated Performance
Monitoring of Dams**

Mandatory Center of Expertise
Curation & Management of
Archaeological Collections

Veterans Curation Program
Rope Inspection Team

Environmental and Munitions

**Formerly Utilized Sites Remedial
Action Program (FUSRAP)**

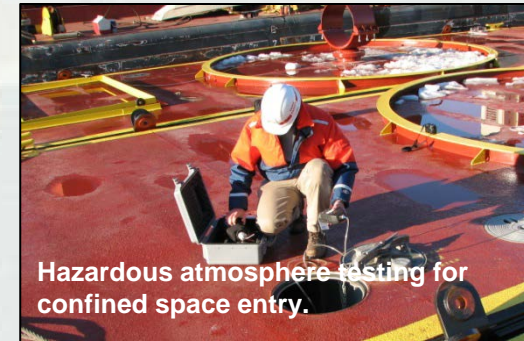
Applied River Engineering Center (AREC)

Geospatial Services

Photogrammetric Mapping Center of Expertise
Hydrographic Surveying Program

Partnering

Big River Joint Feasibility Study (USEPA)
Riverlands Migratory Bird Sanctuary



Hazardous atmosphere testing for
confined space entry.



MV Simpson II performing a
hydrographic survey.



Rope inspection team.

Value to the Nation

BUILDING STRONG®

Contracting Office

1. The only Warranted Contracting Officers can obligate or award a contract on behalf of the Federal Government. (The St. Louis District has three.)
2. The Contracting Officer is responsible for ensuring all contractual documents are compliant with all Federal Acquisitions Regulations and policies.
3. We work hand-in-hand with Legal and Resource Management to ensure all contractual documents are legally sufficient and the necessary funds are certified available before we sign the contract.



Potential Contracts FY 2016



BUILDING STRONG®



February 2015
U.S. Army Corps of Engineers
St. Louis District
1222 Spruce Street
St. Louis, MO 63103-2833

Navigation

FY 16 Potential Contracts

<u>Project:</u>	<u>Description:</u>	<u>Award Date:</u>	<u>Cost Range:</u>
Upper River, MRM 300-195 (O&M)	Dike & Revetment for the maintenance of existing river training structures and revetments	Jul-16	\$1-5M
Lower River, MRM 195-98.6 (O&M)	Dike & Revetment for the maintenance of existing river training structures and revetments	Aug-16	\$1-5M





February 2015
U.S. Army Corps of Engineers
St. Louis District
1222 Spruce Street
St. Louis, MO 63103-2833

Ecosystem Restoration

FY 16 Potential Contracts

<u>Project</u>	<u>Description</u>	<u>Advertise Date</u>	<u>Cost Range</u>
UMRR Clarence Cannon Exterior Berm Setback	Exterior berm setback (levee type earthwork and excavation)	FY-16	\$250-\$500K
UMRR Clarence Cannon Interior Berm Setback	Interior berm setback (levee type earthwork and excavation)	FY-16	\$250-\$500K





February 2015
U.S. Army Corps of Engineers
St. Louis District
1222 Spruce Street
St. Louis, MO 63103-2833

Flood Risk Management

FY 16 Potential Contracts

<u>Project</u>	<u>Description</u>	<u>Advertise Date</u>	<u>Cost Range</u>
Engineering	New Misc Mapping Contracts	FY16	\$1-\$5M
Engineering	New Misc Mapping Contracts	FY16	\$1-\$5M
Engineering	Field/Hydro Surveys	FY16	\$500K-\$1M
Engineering	Field/Hydro Surveys	FY16	\$500K-\$1M
Monarch-Chesterfield	Watershed 4 Gravity Drains; Levee Raise at Pump Station 7; Relief Wells; Pump Station	FY16	\$1-\$5M



February 2015
U.S. Army Corps of Engineers
St. Louis District
1222 Spruce Street
St. Louis, MO 63103-2833

Supply & Service

<u>Project</u>	<u>Description</u>	<u>Advertise Date</u>	<u>Cost Range</u>
Carlyle Lake, IL	Gate Attendants Boulder (Weekdays & Weekends)	TBD	\$25-\$100K
	Visitor Center Attendants (Weekdays & Weekends)	TBD	\$25-\$100K
	Misc (Supply/Service/Construction)	FY16, 3rd Qtr.	\$100-\$500K
	Supply Rock	TBD	\$25-\$100K
	Equipment Rental	TBD	\$25-\$100K



February 2015
U.S. Army Corps of Engineers
St. Louis District
1222 Spruce Street
St. Louis, MO 63103-2833

Supply & Service

<u>Project</u>	<u>Description</u>	<u>Advertise Date</u>	<u>Cost Range</u>
Rend Lake, IL	Gate Attendants North / South Sandusky & Gun Creek		
	Misc (Supply/Service/Construction)	TBD	\$100-\$500K
	Mowing	TBD	\$100-\$500K
	Park Rehabilitation	TBD	\$100-\$500K



February 2015
U.S. Army Corps of Engineers
St. Louis District
1222 Spruce Street
St. Louis, MO 63103-2833

Supply & Service

<u>Project</u>	<u>Description</u>	<u>Advertise Date</u>	<u>Cost Range</u>
Rivers Project Office West Alton, MO	Elevator Maintenance	TBD	\$25-\$50K
	Misc (Supply/Service/Construction)	TBD	\$100-\$500K
	Diving Contract	TBD	TBD
	Mastership Agreement	TBD	\$1-\$5M



February 2015
U.S. Army Corps of Engineers
St. Louis District
1222 Spruce Street
St. Louis, MO 63103-2833

Supply & Service

<u>Project</u>	<u>Description</u>	<u>Advertise Date</u>	<u>Cost Range</u>
Kaskaskia L&D, IL	Misc (Supply/Service/Construction)	TBD	\$100-\$500K



BUILDING STRONG®



February 2015
U.S. Army Corps of Engineers
St. Louis District
1222 Spruce Street
St. Louis, MO 63103-2833

Other

FY 16 Potential Contracts

<u>Project:</u>	<u>Description:</u>	<u>Award Date:</u>	<u>Cost Range:</u>
Curation	Providing multidisciplinary cultural resource related projects undertaken by USACE, MCX, CMAC, St. Louis District	Jul-16	\$1-5M
FUSRAP	Iowa Army Ammunition Plant	Aug-16	\$5-10M



St. Louis District

QUESTIONS?



BUILDING STRONG®