

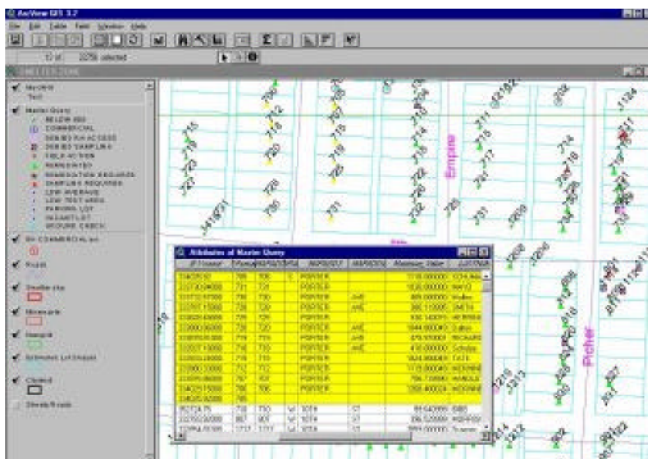


**US Army Corps
of Engineers®**
Kansas City District

Geographic Information Systems (GIS) Services



Data that would ordinarily take days to obtain using traditional methods can be obtained from the Kansas City District's Geographic Information System (GIS) within minutes. The District has populated its GIS with data gathered as a by-product of our Civil Works, Military, and Hazardous, Toxic and Radioactive Waste missions. The GIS brings together existing maps, tabular data, images, photographs and other data which provides the district a base on which to develop and present projects for use in studies, designs through operations and maintenance.



The District's GIS data includes a base map GIS for the Missouri River, bluff to bluff, from Rulo, Nebraska, to the mouth, the 18 District-operated lake projects in our civil works boundary, and information from numerous other projects. Information includes property boundaries, levees, revetments, dikes, gages, wildlife areas, wetlands, topology and many other features.

An exciting feature of GIS is to be able to link databases to maps to allow selective display of that data on the maps. All this points to many possibilities for projects limited only by our creativeness.



POINTS OF CONTACT

For additional information concerning Construction services, please contact:

Corps of Engineers, Kansas City District
CENWK-EC-GD
601 E. 12th Street
Kansas City, Missouri 64106
Phone: 816-389-3612
Fax: 816-389-2009

