



**US Army Corps
of Engineers**
St. Louis District

Section 4 of the Flood Control Act of 1938; Section 103 of WRDA 1986; Section 1001(20) of WRDA 2007

Project Fact Sheet

Wood River Levee, IL

Construction (FRM)

Location: The project area is located in the Mississippi River flood plain of Madison County, Illinois, upstream of the city of East St. Louis. An urban design levee, authorized in 1938 and constructed in the 1950s, protects the area.

Description: The project includes replacing 163 of 170 existing relief wells and installing 60 new relief wells as a design deficiency correction under the existing project authorization. The recommended plan to correct deficiencies of underseepage controls identified in the Limited Reevaluation Report includes construction of new relief wells, seepage berms, and cutoff walls.

Issues: Levee system will have a significant risk of failure during high water events unless underseepage design deficiency and through-seepage corrections are made. The system currently does not provide the authorized level of protection, equivalent to 54' on the St. Louis Mississippi River gage (approx. 500-year event) due to uncontrolled underseepage. Rehabilitation of aged infrastructure is complete. Design deficiency corrections are underway to address uncontrolled underseepage. The sponsor, Southwestern Illinois Flood Prevention District Council (FPD), is performing work to improve the levee to a 1.0 percent chance of exceedance to attain 100-year level of protection and maintain FEMA accreditation. Approximately \$14 million of federal project work is being self-constructed by the sponsor to aid in their accreditation efforts. The FPD continues to request that the Corps mandate the use of Project Labor Agreements (PLA) for construction contracts in the geographic area. The Army determined that MVS solicitations will provide for voluntary submissions of a PLA under a Best Value Tradeoff (BVTO) acquisition strategy. The FPD has indicated their desire to provide cost share funds as Work in Kind (WIK) credit and has developed a plan for designing and constructing portions of the authorized project. MVS will collaborate on preliminary and pre-design design activities in support of the FPD's planned work. An Integral Determination Report (IDR) which identifies creditable work was approved 08 March 2016. The Project Partnership Agreement (PPA) WIK amendment is scheduled for execution by December 2016. Initiation of design deficiency construction will utilize WIK credit as the non-Federal cost share. The FPD initiated WIK activities in January 2015.

Importance: The Wood River Levee System protects a population of approximately 20,000 people in 5 towns; a high concentration of industry such as petrochemical infrastructure, steel manufacturing, and ammunition

production; and 12,700 acres of bottomland. In addition, the system is part of the containment feature of the Melvin Price Lock and Dam.

Risk: Without design deficiency corrections, the levee is in danger of failing due to underseepage during flood events.

Consequence: A levee failure would have catastrophic life, economic, and environmental consequences including damages to commercial/heavy industrial development, environmental and agricultural losses, spread of hazardous and toxic wastes, and significant loss of life.



Upper Wood River Protected Area

Activities for FY 16: Funds are being used to award cutoff wall construction contract, complete design of remaining cutoff wall to control underseepage, perform section 408 observation, obtain IDR approval, prepare PPA WIK amendment, perform pre-design activities in support of FPD design/construction, and close out the Reconstruction project.

Acquisition Strategy: BVTO acquisition strategy with voluntary inclusion of a PLA. The Upper Wood River Shallow Cutoff Wall Phase 2 was awarded using BVTO on 30 June 2016.

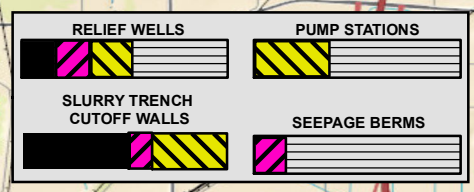
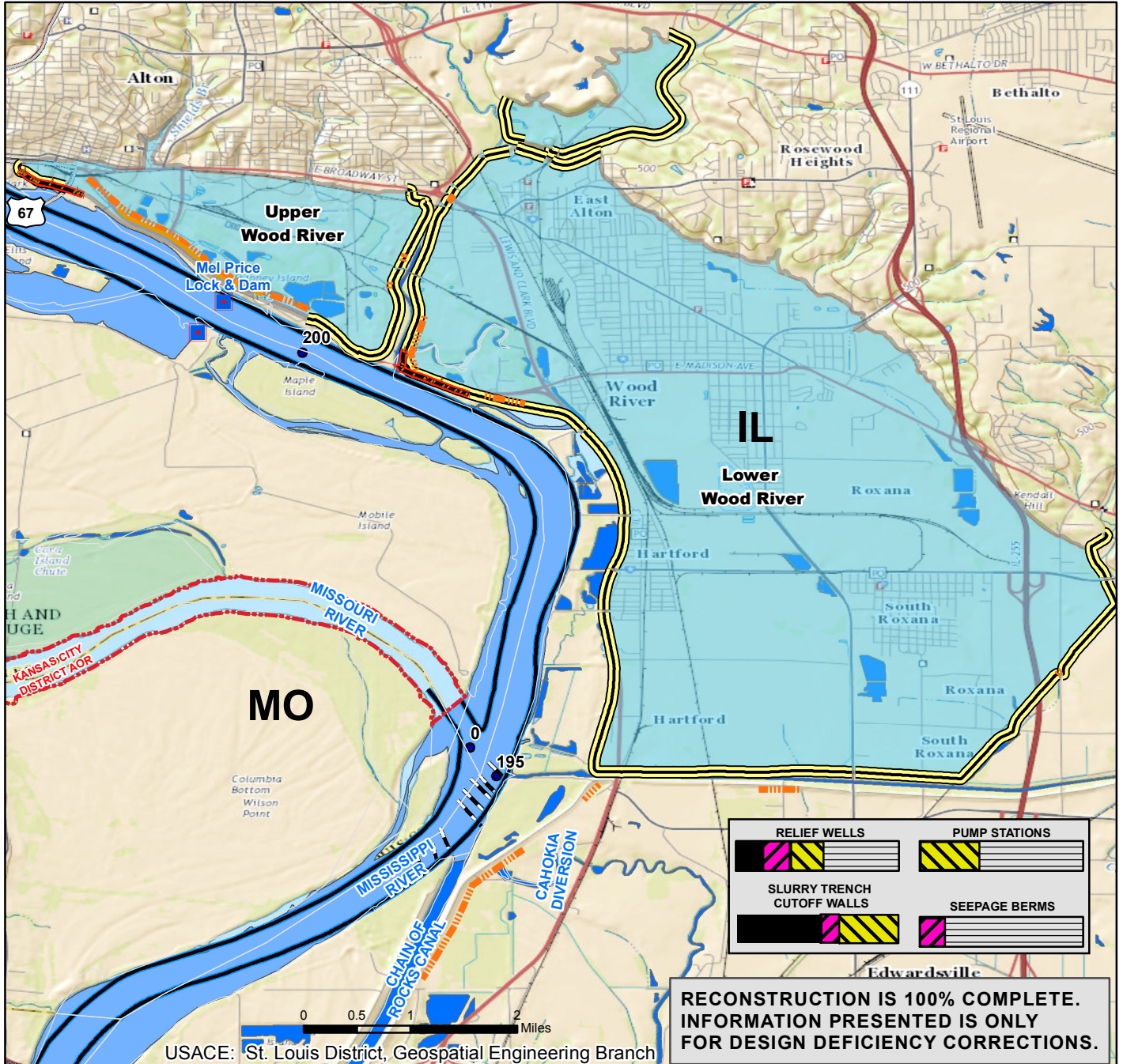
Amount That Could Be Used in FY 17: \$19,100,000 could be used to award the Lower Wood River Deep Cutoff Wall Phase 2 construction contract, perform EDC and S&A for 29 relief wells and 1 pump station to be constructed by the sponsor, and perform initial Risk Assessment for the remaining work in Lower Wood River. Carryover funds will be used for EDC and S&A for construction and to conduct basic project management activities and coordination with the local sponsor.

Project Sponsor/Customer: Wood River Drainage and Levee District and FPD.

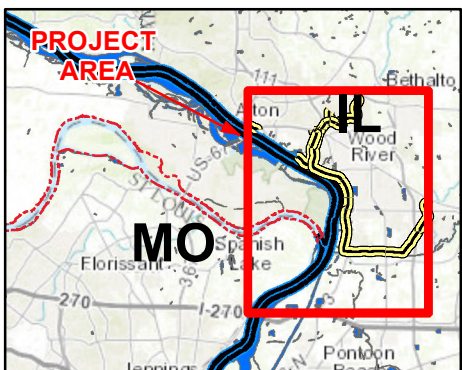
Congressional Interest: Senate: Durbin (IL) and Kirk (IL) House: Bost (IL-12), Shimkus (IL-15) and Davis (IL-13).

Phase	FY 16 Allocation	FY 17 Budget	FY 17 Total Capability
Construction	\$100,000	\$0	\$19,100,000

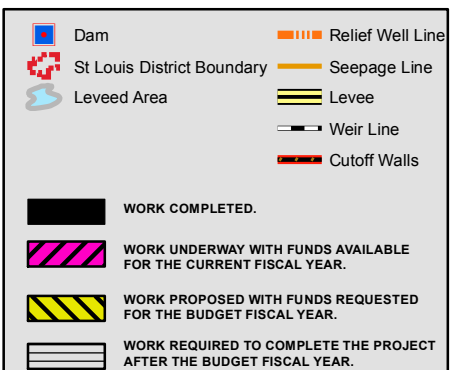
WOOD RIVER LEVEE, ILLINOIS CONSTRUCTION



Vicinity Map



Legend



Location in District

