



US Army Corps
of Engineers
St. Louis District

Project Fact Sheet Wappapello Lake, MO

The Overton Act of 1936 and the Flood Control Act of 1944

Mississippi River and Tributaries (MR&T)

Location and Description: Project is located on the St. Francis River, mile 309, in the Ozark uplands of Wayne County, Missouri and provides flood control, recreation, water quality, and conservation of fish and wildlife. Wappapello Lake consists of 44,349 acres of land and 8,400 acres of water. The dam site lies 22 miles southeast of Greenville, 16 miles northeast of Poplar Bluff, and one mile southwest of Wappapello, Missouri.

- FY 2016 Allocation (\$8,584k) (baseline service level \$5,841k)
 - Operate and maintain the project, implement \$30,000 Handshake Partnership for Accessible Hunting Blinds, replace gatehouse windows and door, implement sustainability features, rehabilitate existing visitor center structure to include interpretative displays and outdoor landscaping, begin Greenville campground sewer and electric upgrade, purchase priority inholdings, repair Visitor’s Center and Gatehouse roofs, and restore degraded and non-existent wetlands.

BELOW: Gatehouse Repairs. Roof, hydro, windows and doors, top backlog item to complete



VALUE TO NATION	
Flood Damages Prevented (cumulative 1993-2014)	\$86,540,000
FY12 Visitor Spending	\$32,988,000
FY12 Jobs Supported	411
Rec Area Management	14 by Corps; 10 by outgrant
Acres Managed	39,189 by Corps; 5,160 by others

- FY 2017 President’s Budget (\$4,912k); Capability (\$27,362k; top items listed)
 - Operate and maintain project below baseline level of service
 - Periodic inspection of dam and gatehouse structures
 - Continue to pursue Purchase of Inholdings
 - Sustainability package for waterline replacement

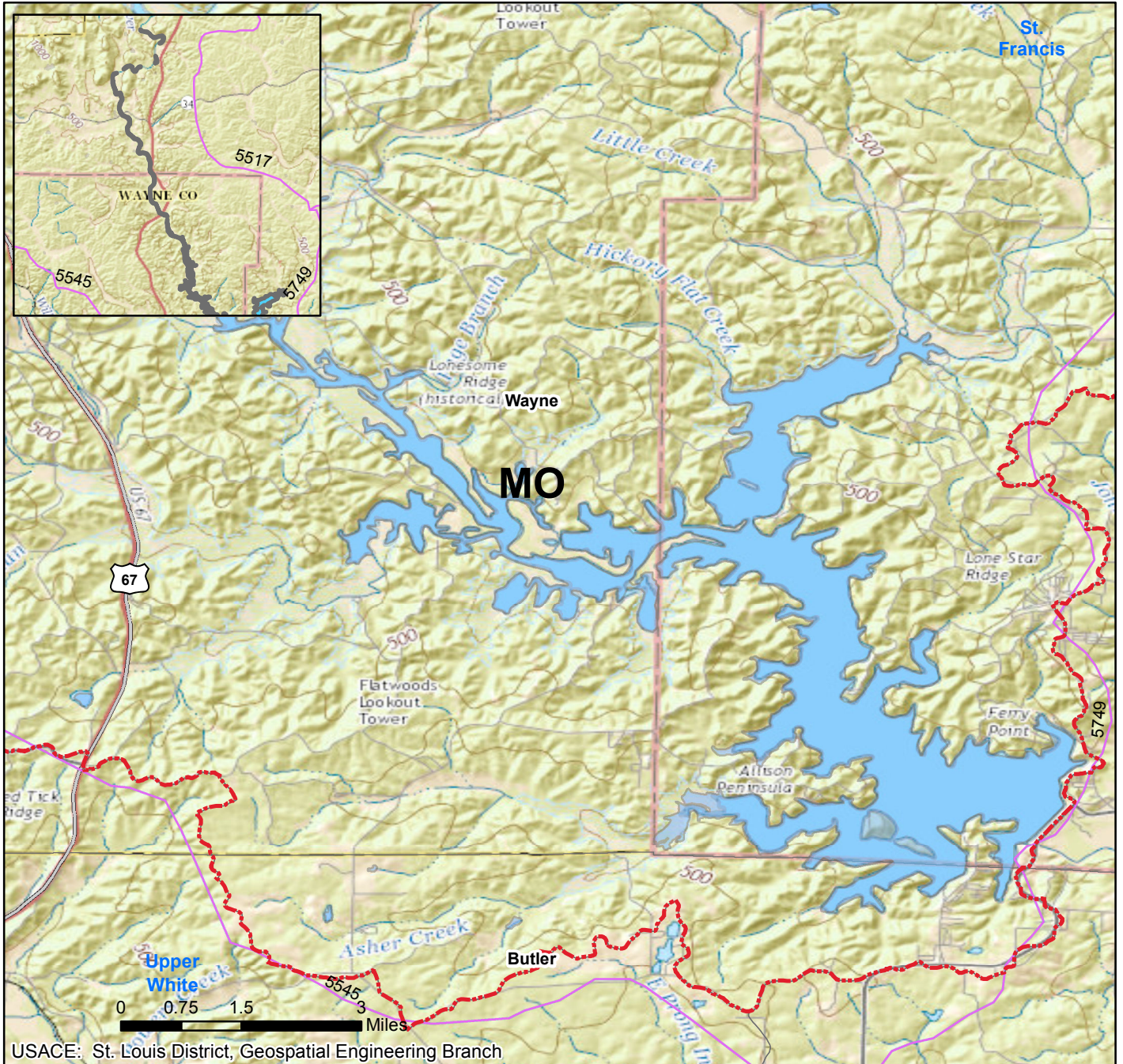
- Issues and Other Information
 - City of Greenville Flood Study (\$250k unfunded)
 - Dam assessed as Dam Safety Action Class (DSAC) III
 - 75 Year Anniversary of the Project (June 2016)

(*Estimate)	FY12	FY13	FY14	FY15	FY16
- Federal Allocation	\$8,408k	\$7,138k	\$4,765k	\$6,488k	\$8,584k
- Supplemental	\$ 0	\$ 0	\$ 0	\$ 0	\$ 0
- ARRA	\$ -3k	\$ -29k	\$ 0	\$ 0	\$ 0
- Non Appropriated Contributions	\$350k	\$797k	\$392k	\$392k	\$312.7*
- Rec Fees Collected	\$376k	\$373k	\$359k	\$359k	\$370K*
-Total Visits	1,656k	1,656k	1,656k	1,656k	1,656K*

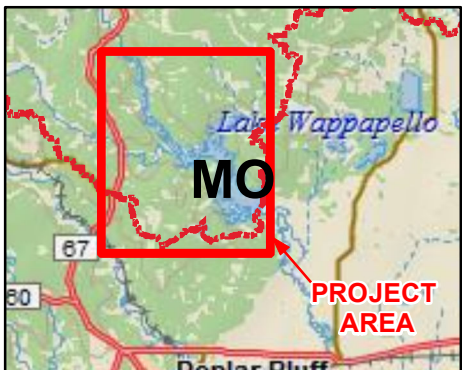
*estimated

WAPPAPELLO LAKE, MO

MISSISSIPPI RIVER & TRIBUTARY



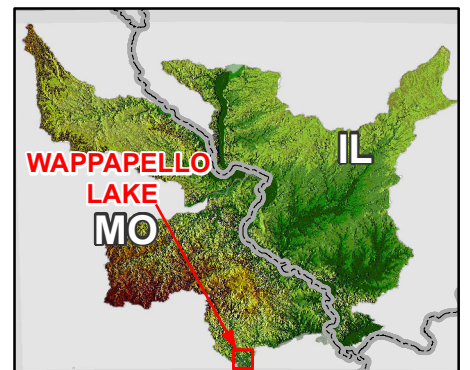
Vicinity Map



Legend

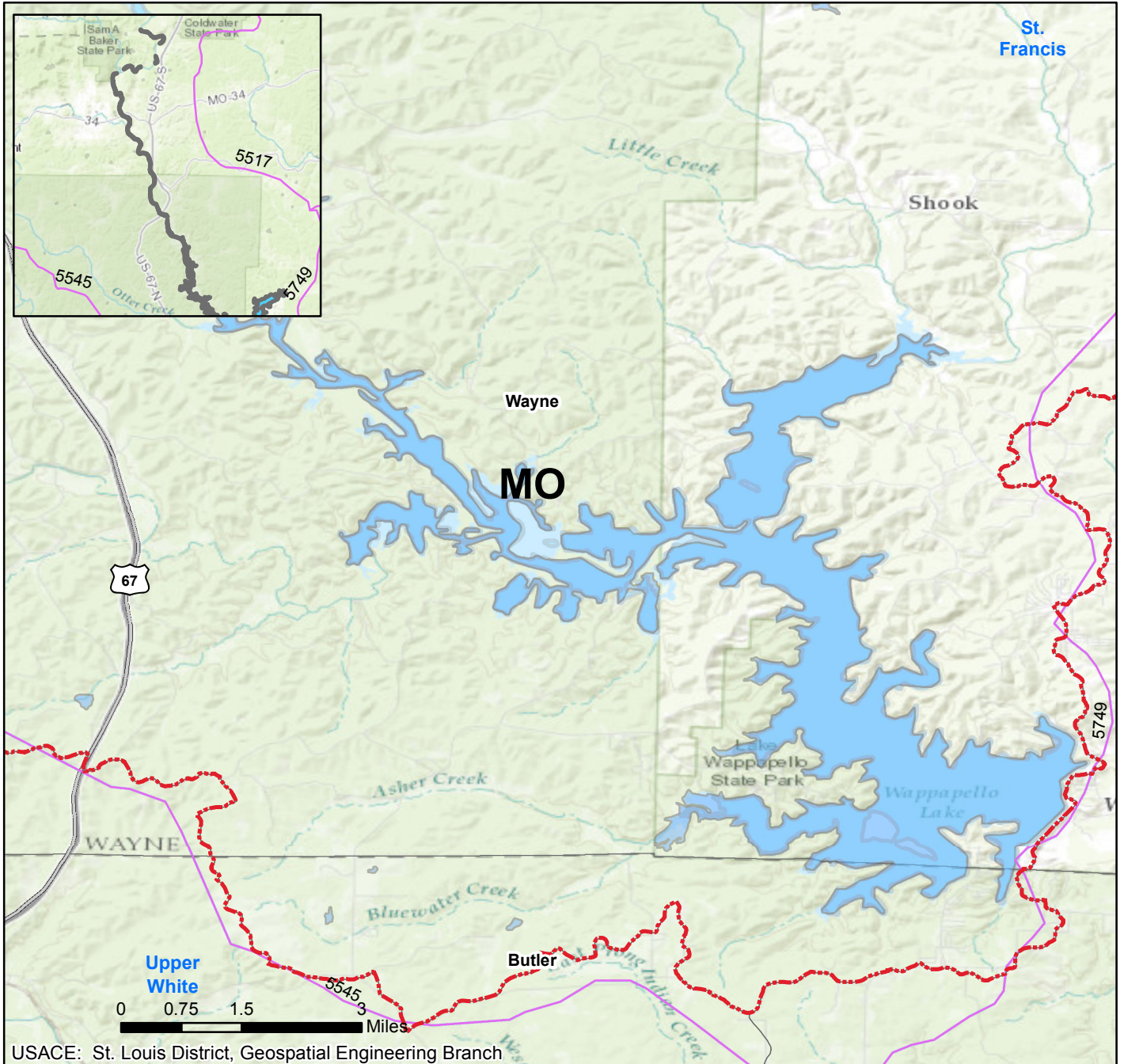
- St Louis District Boundary
- Wappapello Lake
- State
- City
- Levee
- Watershed Lines
- Interstate Highway
- US Highway
- State Highway

Location in District



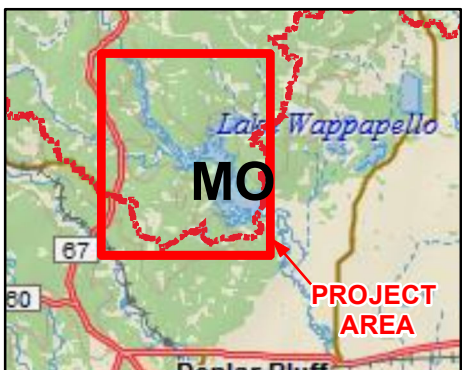
WAPPAPELLO LAKE, MO

MISSISSIPPI RIVER & TRIBUTARY

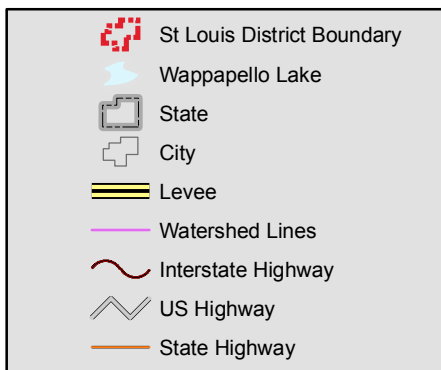


USACE: St. Louis District, Geospatial Engineering Branch

Vicinity Map



Legend



Location in District

