



**US Army Corps
of Engineers**
St. Louis District

Mississippi River Between the Ohio & Missouri Rivers (Lower River)

River and Harbor Acts of 1910, 1927, and 1930 as amended by the River and Harbor Acts of 1945 and 1958.

Operation and Maintenance (NAV)

Location and Description: Project responsibility extends from the mouth of the Ohio River to the Missouri River at the northern boundary of the City of St. Louis including 195 miles of Open River, St. Louis Harbor and 10,000 acres of public land. Project provides nine-foot navigation channel with a canal/Locks 27 at Chain of Rocks, fixed crest rock dam, channel maintenance, dredging, and flood risk management. Project has environmental stewardship responsibility as well as land-and water-based recreational opportunities.

- Allocation FY 2016 (\$27,894k) (baseline service level \$25,540k)
 - Operate and maintain project at an acceptable service level
 - Includes \$2,850k FCCE funds for emergency dredging following winter flooding
 - Includes \$200k reprogrammed for emergency repairs to Locks 27 following winter flooding
 - Flood damages Chain of Rocks Levee and Pump Station, Recreational Access Areas, Floodplain Forests, and Project Roads (\$2.4M)
- FY 2017 President’s Budget (\$24,608k) Capability (\$61,456k; top 2 items listed)
 - O&M of project at acceptable level of service (\$27,146k)
 - Phase III shoreline repairs (\$2,000k)
 - Liftgate Hoisting Chain System (\$1,200k)
- Issues and Other Information
 - Backlog of unfunded needs reduced by \$62M (\$33M CG; 29M O&M) since FY 2006
 - Current unfunded backlog needs are \$36,848k
 - Locks 27 unscheduled closures cost the U.S. economy \$2.7M per day



Critical bankline failures from winter flooding repaired under emergency



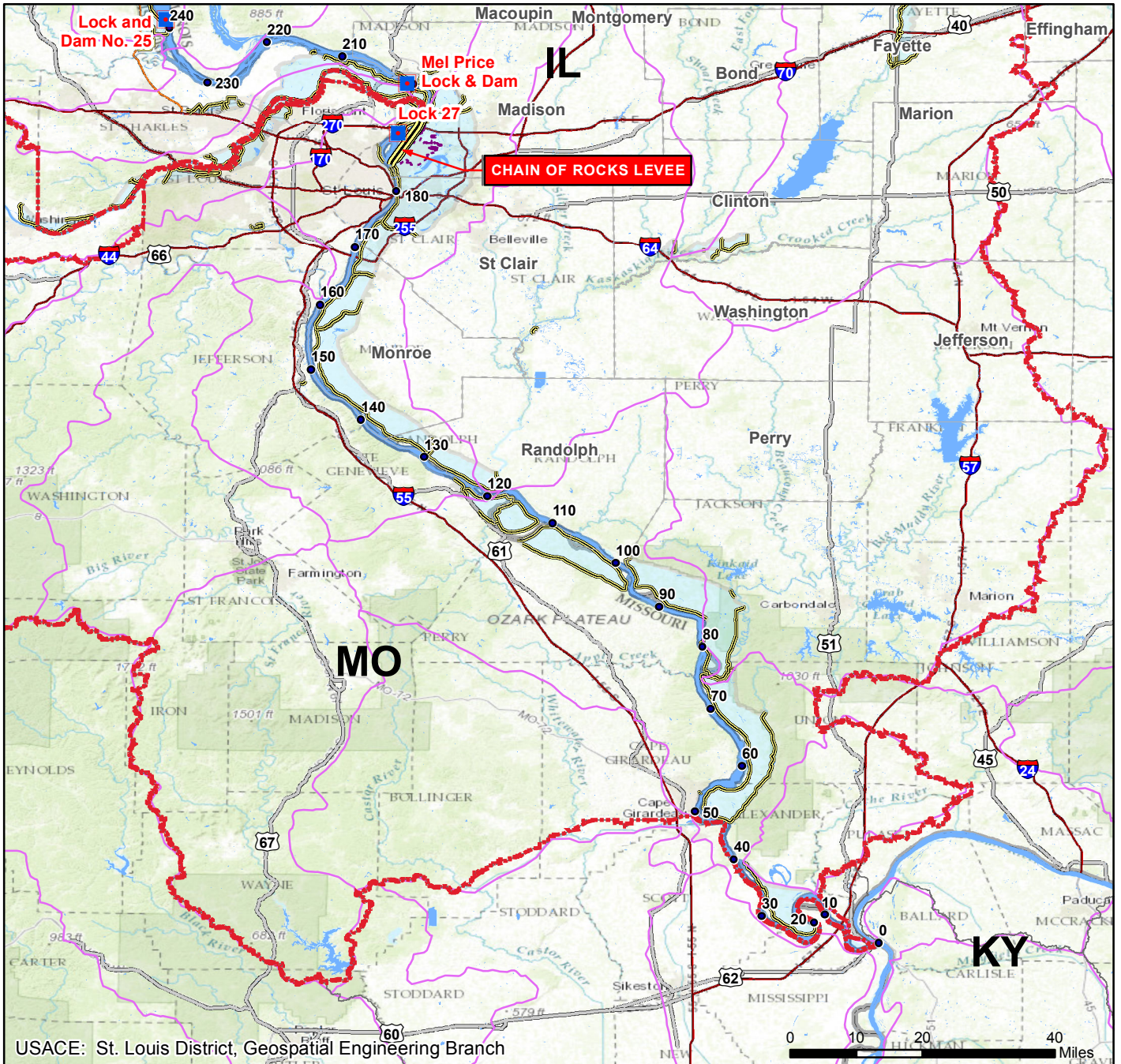
Failed Liftgate Hoisting Rollers at Locks 27

	FY12	FY13	FY14	FY15	FY16
- Federal Allocation	\$36,342k	\$33,504k	\$39,914k	\$24,853k	\$25,044k
- Supplemental	\$ -8k	\$ 4,600k	\$ 0	\$ 0	\$ 2,850k
- ARRA	\$ -4k	\$ 0k	\$ 0	\$ 0	\$ 0
-Non Appropriated Contributions	\$1,000k	\$1,100k	\$1,000k	\$167k	\$146k*
- Total Visits	700k	700k	700k	700k	700k*

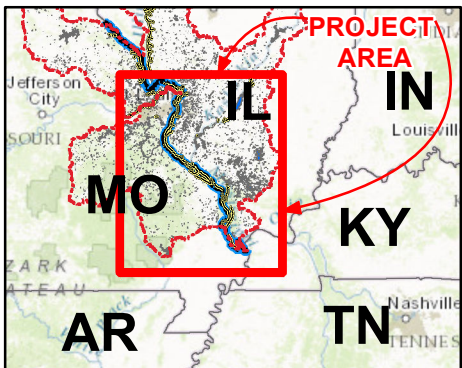
*Estimate

VALUE TO NATION	
Ton Miles (FY13)	14,537, 950,373
Tonnage (FY13)	89,985,914
Project Cost per Ton	\$0.31
FY12 Visitor Spending	\$20,824,000
FY12 Jobs Supported (Rec spending only)	708
Rec Area Management	6
Acres Managed	10,000

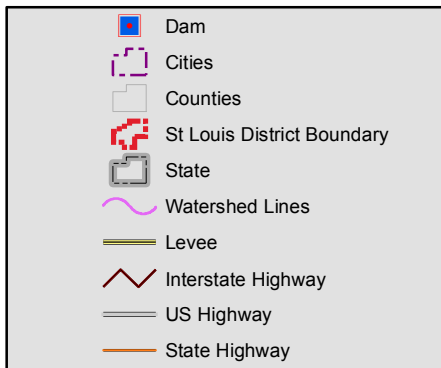
MISSISSIPPI RIVER BETWEEN THE OHIO & MISSOURI RIVERS (LOWER RIVER), IL OPERATIONS & MAINTENANCE



Vicinity Map



Legend



Location in District

