



**US Army Corps
of Engineers**
St. Louis District

Project Fact Sheet

Lake Shelbyville, IL

Flood Control Acts of 1944 and of 1958

Operation and Maintenance (FRM)

Location and Description: The project provides flood control, water supply, recreation, conservation of fish and wildlife, and water quality control and augments navigation flows downstream on the Kaskaskia River. The lake extends northeastward to approximately river mile 275 through Shelby, Moultrie, Douglas, and Coles Counties.

- FY 2016 Allocation (\$6,157k; top 3 items listed)
 - Operate and maintain project at acceptable service level (\$5,705k)
 - Federal Lands Transportation Program (FLTP) repair Okaw Bluff Road \$250k
 - 110kw solar power project to support office, maintenance compound and main dam \$410k
- FY 2017 Presidents Budget (\$5,975k) Capability (24,027k; top 2 items listed)
 - Repair/replace critical electrical components serving main dam, FRM support features and brake heaters (\$240k)
 - Repair failed concrete drainage systems on west side of main dam (\$225k)
- Issues and Other Information
 - Recover from 2015/2016 flood event. Repair / Rehab facilities, roads and parking impacted by flood waters.
 - Implement sustainability measures at project office and visitor center to reduce energy costs
 - Current unfunded needs are \$28,392k



Shelters and Comfort Station (January 2016)



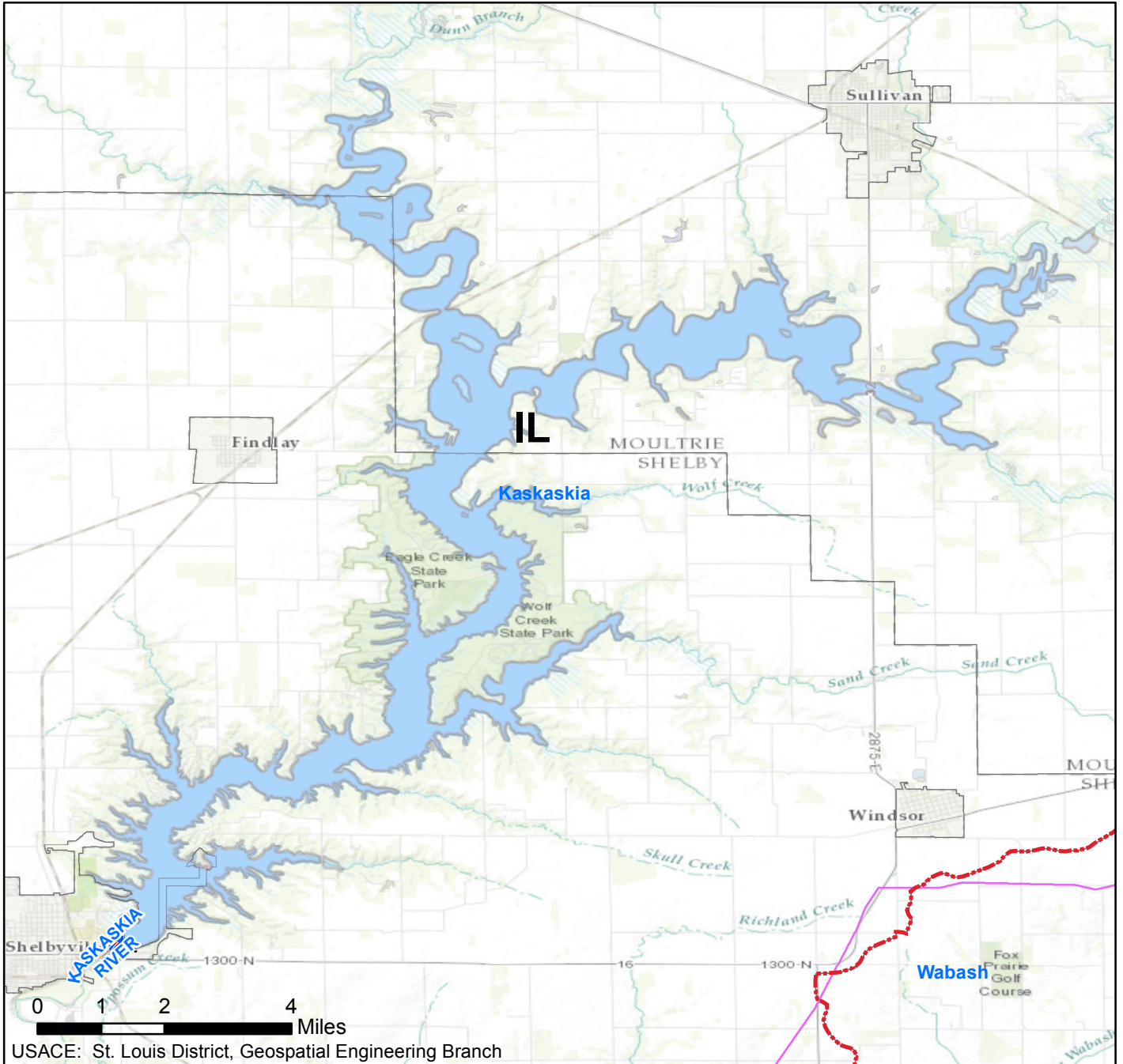
Erosion occurring on many banklines at project (January 2016)

*(Estimate)	FY12	FY13	FY14	FY15	FY16
- Federal Allocation	\$6,674k	\$5,813k	\$5,948k	\$5,954k	\$6,157k
- Supplemental	\$ 0	\$ 0	\$ 0	\$ 0	\$ 0
- ARRA	\$ 2k	\$ 0	\$ 0	\$ 0	\$ 0
- Non Appropriated Contributions	\$2,433k	\$402k	\$638k	\$330k	\$347k*
- Rec Fees Collected	\$592k	\$564k	\$539k	\$592k	\$602k*
- Total Visits	4,086k	4,086k	4,086k	4,086k	4,086k*
VALUE TO NATION					
Flood Damages Prevented (cumulative 1993-2013 Carlyle-Shelbyville)					\$635,540,000
FY12 Visitor Spending					\$88,487,000
FY12 Jobs Supported					1,168
Rec Area Management					12 by Corps; 5 by out-grant
Acres Managed					24,500 by Corps; 9,900 by others

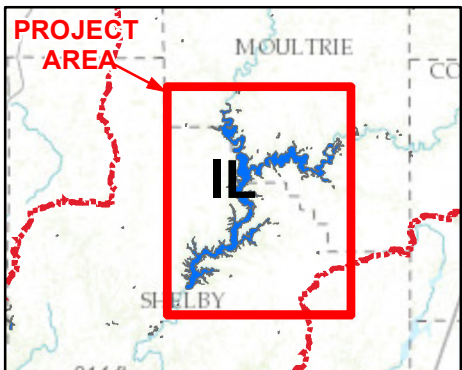
*Estimate

LAKE SHELBYVILLE

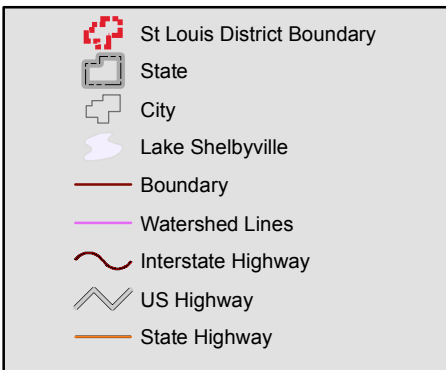
OPERATIONS & MAINTENANCE



Vicinity Map



Legend



Location in District

