



**US Army Corps
of Engineers**
St. Louis District

Project Fact Sheet

Kaskaskia River Navigation & Jerry F Costello Lock & Dam

Section 101 of River and Harbor Act 62, Section 321 of WRDA 96 (PL) 104-303, added fish & wildlife and habitat restoration as project purposes, Section 311 of WRDA 2000 (PL 106-541) added recreation as a project purpose.

Operation and Maintenance (NAV)

Location and Description: The project is located in south-central Illinois and empties into the Mississippi River 118 miles above the Ohio River. The project consists of a 36 mile navigation channel; one 600-foot lock; dam; gated spillway; 2,901 acres fee and O & M easement lands; 5,593 acres of flowage easement. The project supports three barge terminals; two marinas; four major recreation areas with boat ramps; & numerous minor access points. Authorized purposes are navigation, recreation, fish & wildlife, & habitat restoration.

- Allocation FY 2016 (\$4,762k)
 - Operate & maintain project, unwater and inspect culvert valves, complete arc flash safety analysis, complete P&S for dam gate repairs, install bulkhead lifting machinery and lifting cable on gate one, repair brace on trunnion arm and replace missing bracing on dam gate, complete Master plan update, and inspect/test dam bulkheads.
 - Complete flood repairs: lock electrical repairs/improvement (raise utility transformer, transfer switch, and main breaker above flood plain and replace emergency generator), replace limit switches, repair CCTV/camera and security systems, dredge the mouth, rehab control house/admin building/visitor center.

- FY 2017 Presidents Budget (\$2,093k) Capability (\$27,165k), top 2 items listed)
 - Flood repairs/dredging (\$2,430k) and flood repair/ modifications (\$5,065k) including repair of tainter gates.

- Issues and Other Information
 - Record flood of 2015-16 caused significant damages to facilities and structures. A number of repairs were made in FY 2016 however additional dredging and repairs to control house/office/visitor center. recreation facilities, roads & trails required. Modifications needed to prevent damages in future flood events and to bring the mouth mile 0.0-.8 and channel to authorized widths.
 - Tonnage trends continue upward : > 1.5 M tons in FY 2016
 - Closure of lock or loss of pool will close two major power plants serving over 16 million people, stop development of a grain terminal at Fayetteville and a \$6 million expansion at Baldwin.
 - Unfunded needs reduced by \$26,029k since FY 2009.



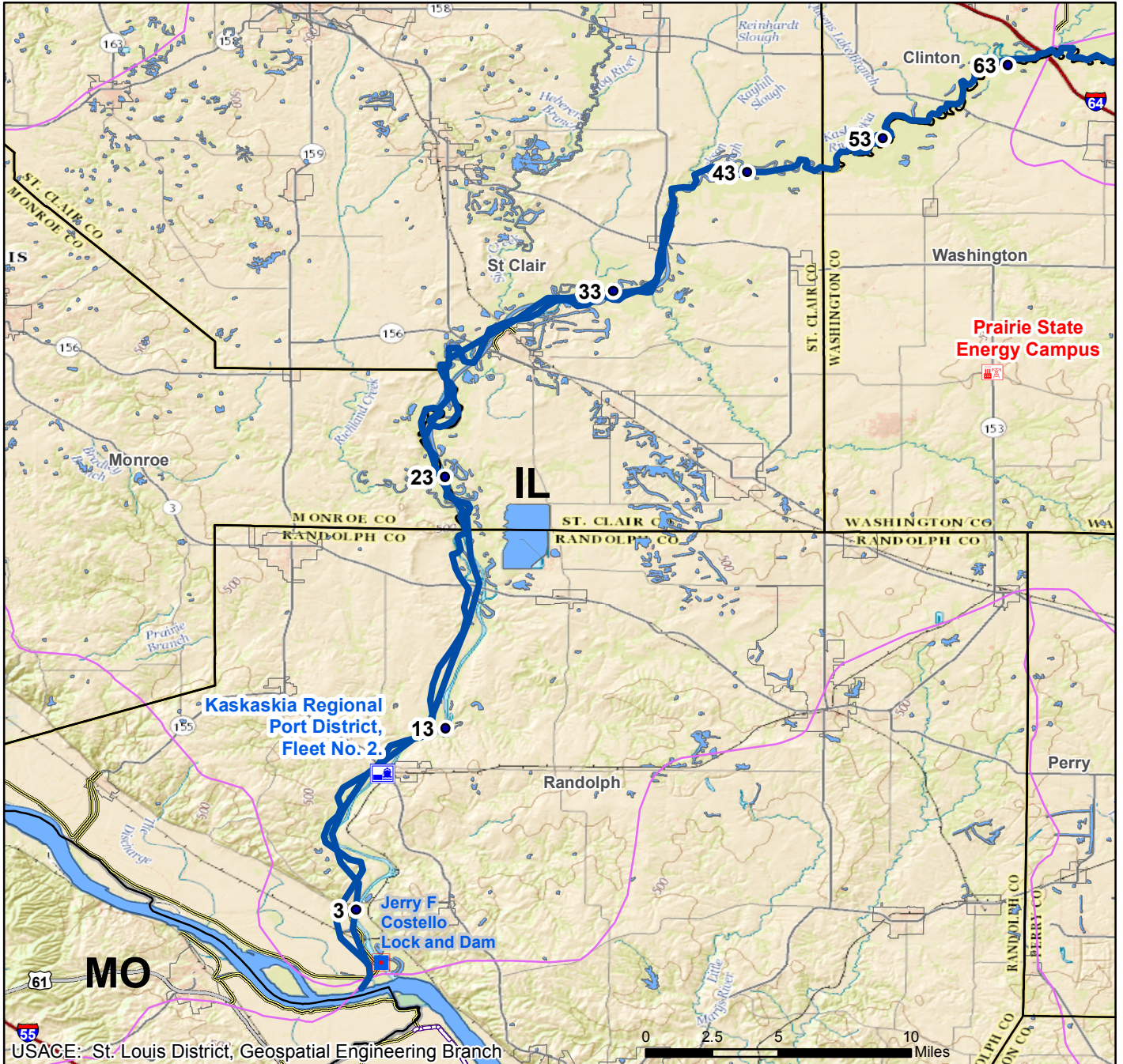
Bulkhead is inspected prior to culvert valve inspection.

VALUE TO NATION	
Ton miles (FY15)	19,038,804
Tonnage (FY15)	1,313,021
Cost Per Ton	\$1.22
FY12 Visitor Spending	\$18,847,000
FY12 Jobs Supported	500
Rec Area Management	3
Acres Managed	2,901

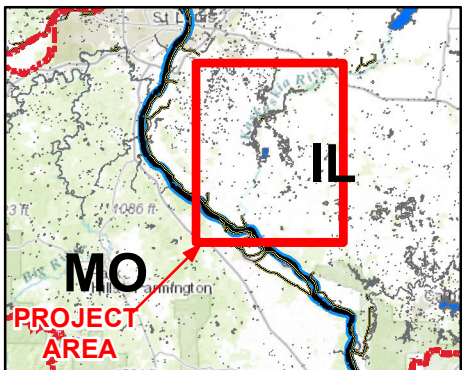
	FY12	FY13	FY14	FY15	FY16
-Federal Allocation	\$4,719k	\$1,711k	\$2,158k	\$1,988k	\$4,762k
- Supplemental	\$ 3k	\$ 0	\$ 0	\$ 0	\$ 0
- ARRA	\$ 12k	\$ 0	\$ 0	\$ 0	\$ 0
-Non Appropriated Contributions	\$59k	\$81k	\$72k	\$75k	\$75k*
-Total Visits	400k	400k	400k	400k	400k*

*Estimate

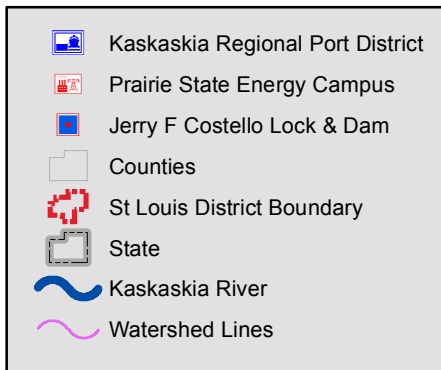
KASKASKIA RIVER NAVIGATION OPERATIONS & MAINTENANCE



Vicinity Map



Legend



Location in District

