



**US Army Corps  
of Engineers**  
St. Louis District

Flood Control Act of 1936; Energy and Water Development Appropriations Act of 1988 (Public Law 100-202)

# Project Fact Sheet

## East St. Louis, IL

### Construction (FRM)

**Location:** The East St. Louis levee system is located in St. Clair and Madison Counties, IL, along the left descending bank of the Mississippi River between river miles 175 and 195 above the Ohio River.

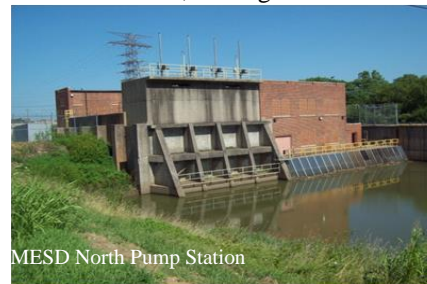
**Description:** The levee system was designed to withstand a flood at 54 feet on the St. Louis gage; approximately a 0.2 percent chance of exceedance (500-year event) and provides flood protection to approximately 250,000 residents and over \$4.5 billion in economic value. The East St. Louis, Illinois, deficiency correction project will correct underseepage and through-seepage and consists of 305 new relief wells, grouting 312 wood stave relief wells, ditching and pipe collector systems, a seepage pump station, a lift station, a variable frequency drive, seepage berms, cutoff walls, riverside clay blanket, and environmental and archeological mitigation work.

**Issues:** Levee system will have a significant risk of failure during high water events unless underseepage design deficiency and through-seepage corrections are made. The system currently does not provide the authorized level of protection, which is equivalent to 54' on the St. Louis Mississippi River gage (approximately a 500-year event) due to aged infrastructure and uncontrolled underseepage. Rehabilitation of aged infrastructure is complete. Design deficiency corrections are underway to address uncontrolled underseepage. The sponsor, Southwestern Illinois Flood Prevention District Council (FPD), is performing work to improve the levee to 1.0 percent chance of exceedance to attain 100-year level of protection and maintain FEMA accreditation. The FPD continues to request that the Corps mandate the use of Project Labor Agreements (PLA) for construction contracts in the geographic area. The Army determined that MVS solicitations will provide for voluntary submissions of a PLA under a Best Value Tradeoff acquisition strategy. The FPD has indicated their desire to provide cost share funds as Work in Kind credit and has developed a plan for designing and constructing portions of the authorized project. MVS will collaborate on preliminary and pre-design design activities in support of the FPD's planned work. An Integral Determination Report (IDR) which identifies creditable work was approved 08Mar16. The PPA WIK amendment is scheduled for execution 01Dec16. Initiation of design deficiency construction will utilize WIK credit as the non-Federal cost share. The FPD has initiated WIK activities in 2016.

**Importance:** The Metro East Sanitary District (MESD) levee has high probability of failure during significant flood events due to inadequate underseepage and through-seepage controls. Serious underseepage problems were observed during the 1993 flood. Approximately 250,000 residents and \$4.8 billion in economic value are protected by the levee.

**Risk:** Without the deficiency correction project, the levee is in danger of failing due to underseepage or through-seepage problems during a flood.

**Consequence:** A levee failure would have catastrophic life, economic, and environmental consequences including damages to commercial/heavy industrial development, environmental and agricultural losses, spread of hazardous and toxic wastes, and significant loss of life.



**Activities for FY 16:** Funds are being used to perform 408 observation of FPD construction activities, obtain IDR approval, complete design and P&S of 53 relief wells, and perform pre-design activities in support of FPD activities and prepare the PPA WIK amendment.

**Acquisition Strategy:** No contract award is scheduled for FY16.

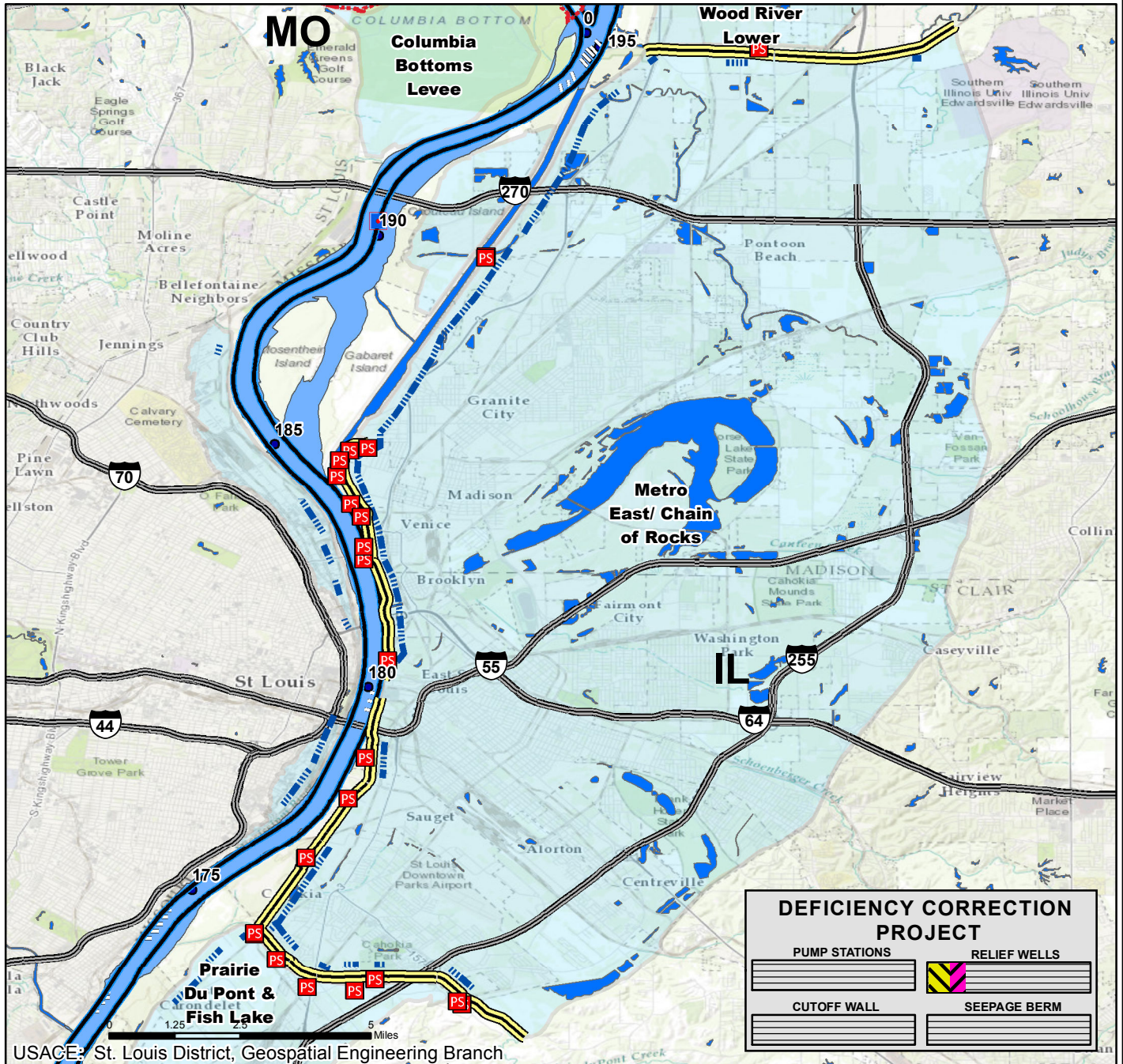
**Amount That Could Be Used in FY 17:** Carryover funds will be used to conduct basic project management activities. An additional \$10,590,000 could be used to design the next increment of relief wells, provide design oversight for sponsor WIK design activities, perform S&E/EDC for sponsor WIK construction activities, and construct relief wells.

**Project Sponsor/Customer:** Metro East Sanitary District and Southwestern Illinois FPD

**Congressional Interest:** Senate: Durbin (IL) and Kirk (IL)  
House: Bost (IL-12), Shimkus (IL-15) and Davis (IL-13).

Phase	FY 16 Allocation	FY 17 Budget	FY 17 Total Capability
Construction	\$50,000	\$0	\$ 10,590,000

# EAST ST LOUIS, ILLINOIS CONSTRUCTION

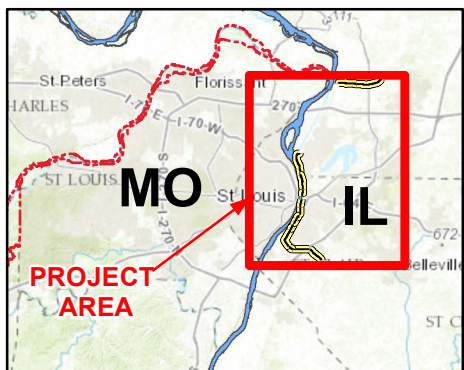


USACE: St. Louis District, Geospatial Engineering Branch

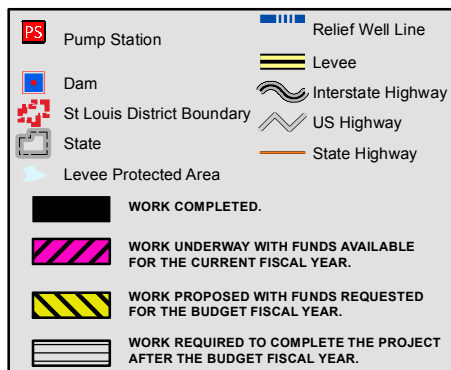
**DEFICIENCY CORRECTION PROJECT**

PUMP STATIONS	RELIEF WELLS
CUTOFF WALL	SEEPAGE BERM

**Vicinity Map**



**Legend**



**Location in District**

