



US Army Corps  
of Engineers  
St. Louis District

# Project Fact Sheet Carlyle Lake, IL

Flood Control Acts of 1938, 1944, and 1958.

## Operation and Maintenance (FRM)

**Location and Description:** The project, completed in 1967, is located on Kaskaskia River, approximately 107 miles above its mouth, near the community of Carlyle, Illinois. Portions of the project are situated in Clinton, Fayette, Bond, and Marion Counties. Carlyle Lake is the largest man-made lake in Illinois, with over 26,000 acres of water and 11,000 acres of public land. This lake provides flood control, water quality control and water supply to nearby communities, recreation, and fish and wildlife conservation; and is authorized to augment navigation flows downstream on the Kaskaskia River.

- Allocation FY 2016 (\$5,803k)
  - Operate and maintain project at a reduced level of service due to flood damages
  - Update project Master Plan using watershed approach
- FY 2017 President’s Budget (\$6,287k)
  - Operation Project at an acceptable level of service
  - Install solar array for office complex (Sustainability)
  - Efficiency Improvements - Recreation Areas
  - Infrastructure improvements to water supply systems (Sustainability)
- Capability (\$29,774k; top 2 items listed below)
  - Complete priority flood repairs to repair damaged facilities/infrastructure (\$2,700)
  - Complete main dam repairs – removal of lead paint/repainting equipment & bridge; replace side seal heaters, brakes & gate bearings. (\$1,253k)
- Issues and Other Information
  - Carlyle Lake experienced the second highest water level in January 2016 causing extensive damage to shorelines, buildings, water and sewer infrastructure, recreation areas, roads and lots and wildlife management areas. Significant amount of these repairs remain to be completed.



*Campground Damage  
Due to Flooding*



*Shoreline Erosion*

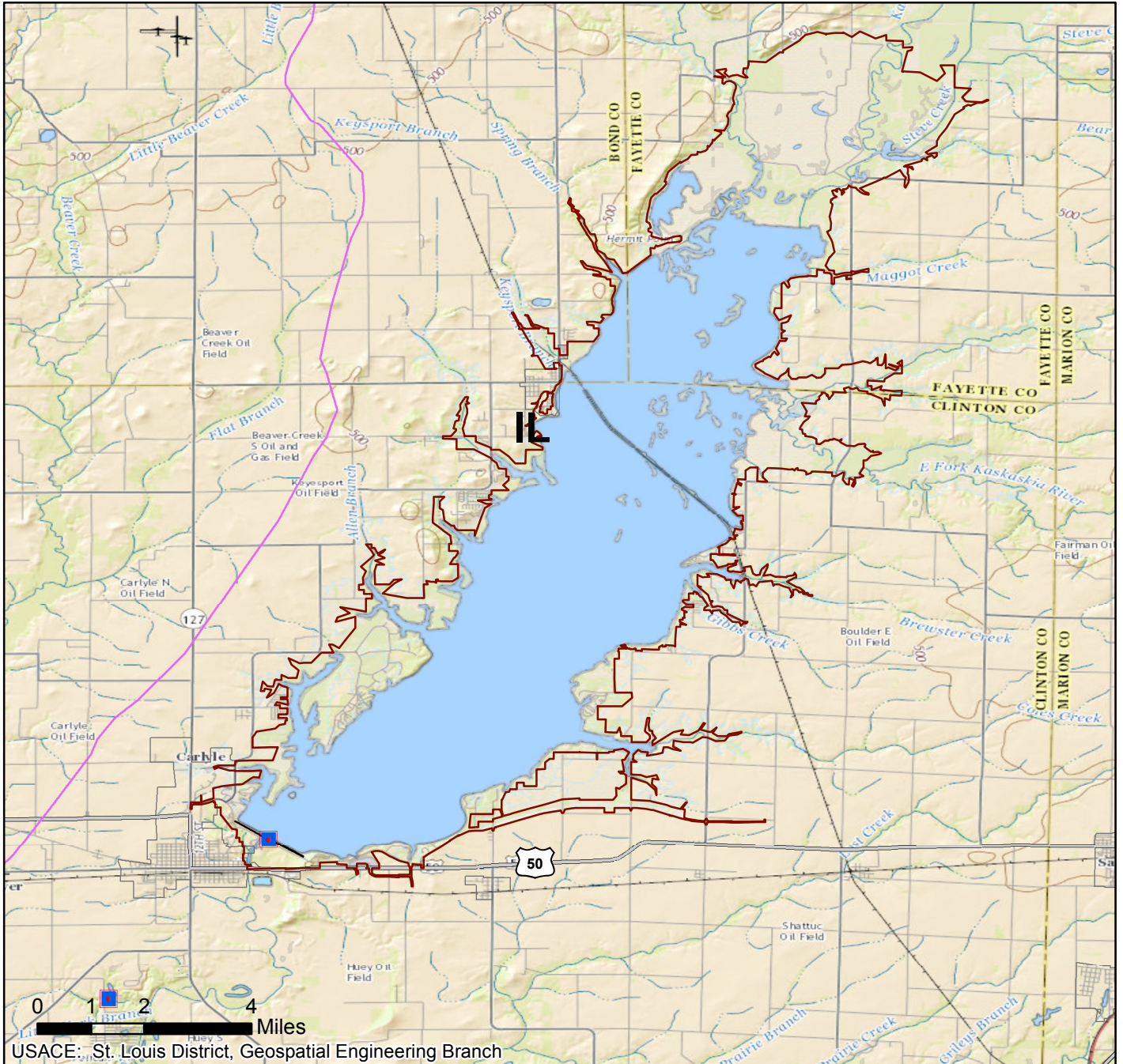
VALUE TO NATION	
Flood Damages Prevented (Cumulative 1993-2013 Carlyle-Shelbyville)	\$653,414,000
FY12 Visitor Spending	\$80,830,000
FY12 Jobs Supported	982
Water Supply	100,000 served
Rec Area Management	8 by Corps; 5 by outgrant
Acres Managed	37,543 by Corps; 10,818 by others

	FY12	FY13	FY14	FY15	FY16
- Federal Allocation	\$6,074k	\$6,267k	\$5,642k	\$5,837k	\$5,803k
- Supplemental	\$ 0	\$ 0	\$ 0	\$ 0	\$ 0
- ARRA	\$ -38k	\$ 0k	\$ 0	\$ 0	\$ 0
- Non Appropriated Contributions	\$582k	\$496k	\$553k	\$619kk	\$699k*
- Rec Fees Collected	\$580k	\$572k	\$561k	\$507K	\$590k*
- Total Visits	2,844k	2,844k	2,844k	2,844k	2,884k

\*Estimate

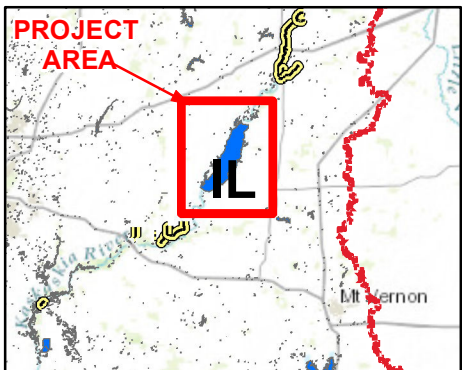
# CARLYLE LAKE

## OPERATIONS & MAINTENANCE

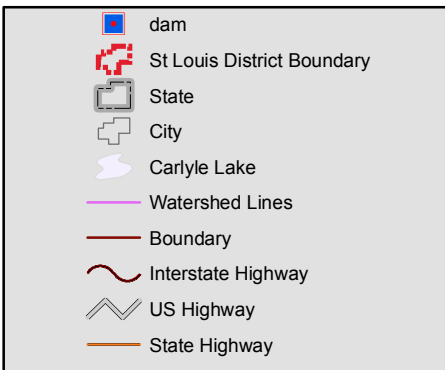


USACE: St. Louis District, Geospatial Engineering Branch

**Vicinity Map**



**Legend**



**Location in District**

