

San Francisco District Regulatory Program Open House “Building Public Trust”

Tori White
Acting Chief, Regulatory Division

415-503-6768

Tori.white@usace.army.mil

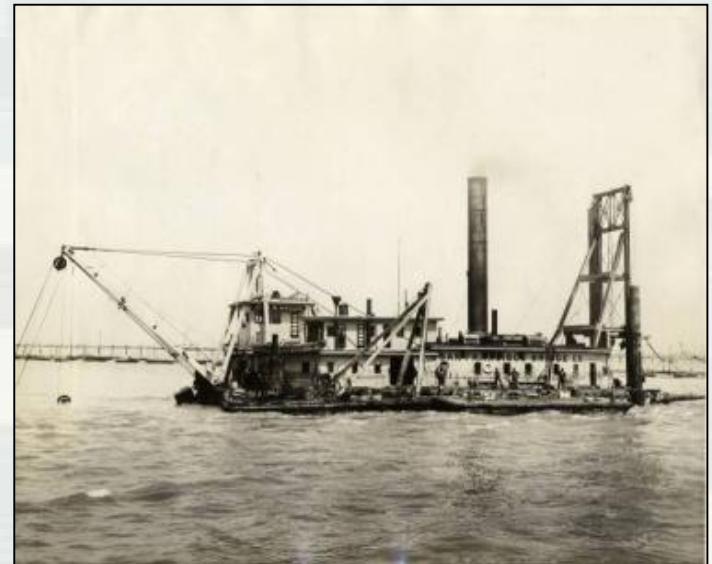


®

US Army Corps of Engineers
BUILDING STRONG®
San Francisco District

Topics

- **USACE Organization**
- **District Organization**
- **Regulatory Program Goals**
- **National Program Statistics**
- **District Regulatory Program**
 - ▶ **FY15 Performance**
 - ▶ **Efficiencies**
 - ▶ **FY16 Look Ahead**
- **Permit Decision Challenges**

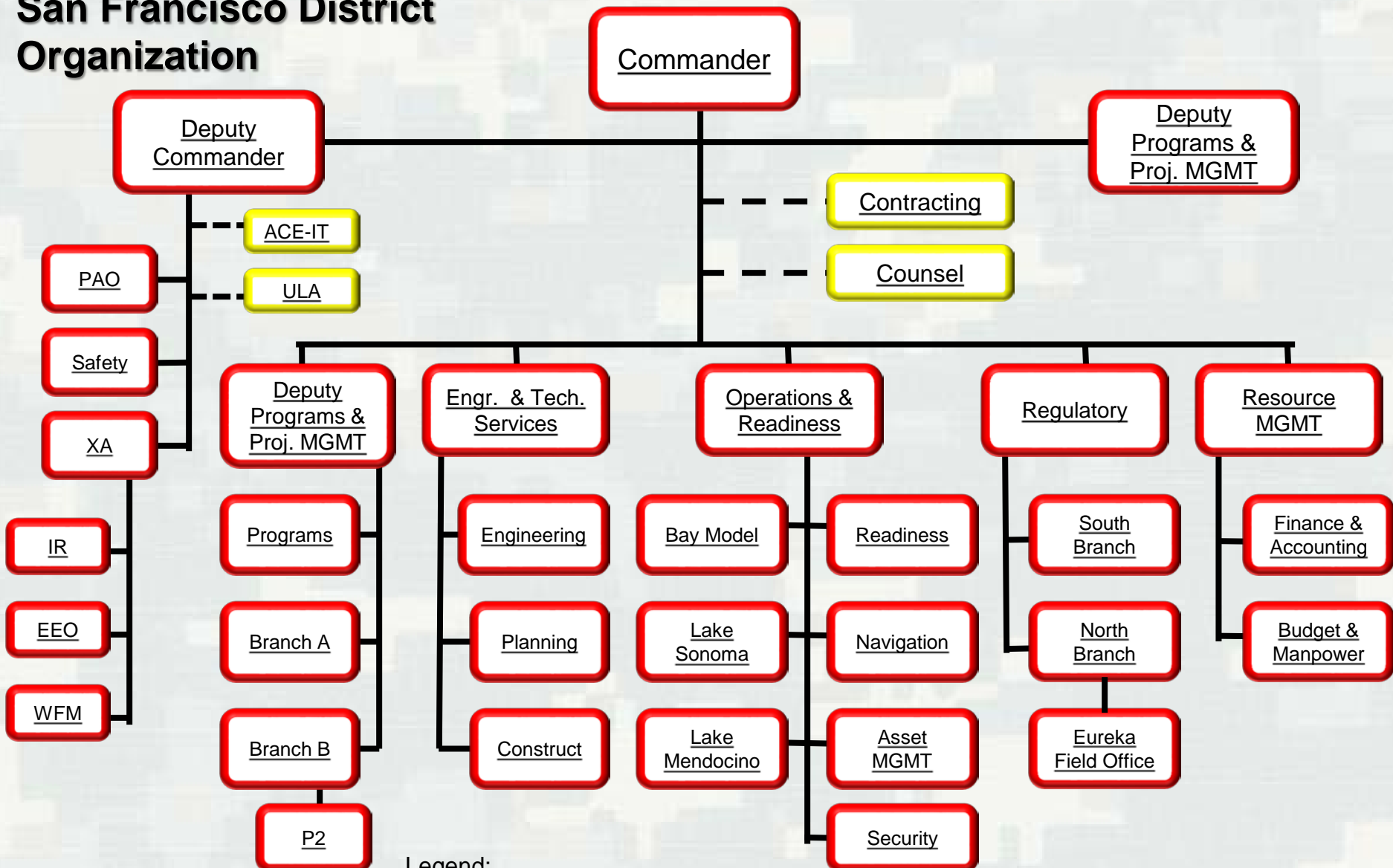


USACE Organization

- Department of Defense
- A Major Command in the Department of the Army
- ASA(CW) provides Civil Works direction
- 3-Star General Officer Command headquartered in Washington, DC
- 9 Divisions and 45 Districts World-wide
- Geographic areas based on watershed boundaries



San Francisco District Organization



Legend:
 Red Text Box - District
 Yellow Text Box - National Organization
 Gray text - Hyperlink

Regulatory Program Goals

- Protect navigation and prevent obstructions in the nation's waters
- Protect the nation's aquatic environment, including wetlands
- Enhance the efficiency of regulatory program administration
- Provide fair and reasonable decisions



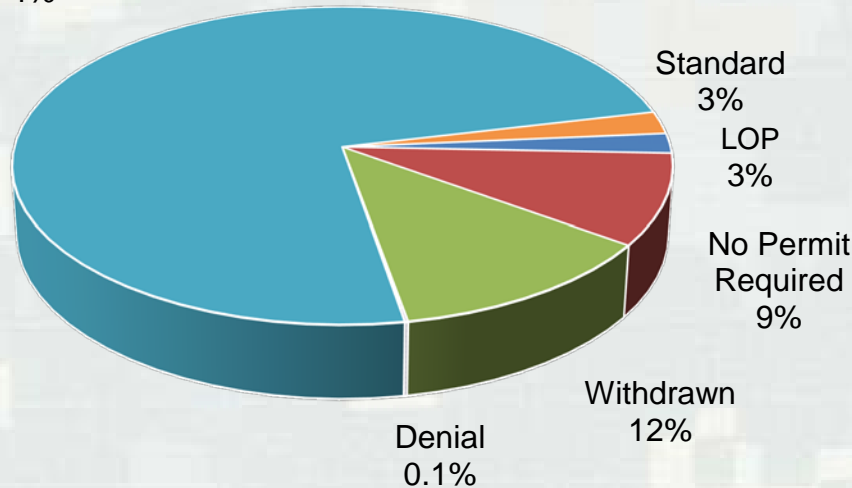
U.S. Army
Corps of Engineers



BUILDING STRONG[®]

National Program Statistics FY15

General
Permit
74%



TOTAL FINAL ACTIONS

Standard Permits	1,700
Nationwide	32,000
Regional	22,800
Letters of Permission	1,500
Denials	97
<i>Withdrawn</i>	<i>9,100</i>
<i>No Permit Required</i>	<i>6,900</i>
<i>Permit Modifications</i>	<i>2,900</i>
TOTAL	~72,600

Jurisdictional Determinations 48,000

Source ORM2 – All totals except denials have been rounded

U.S. Army
Corps of Engineers



BUILDING STRONG®

San Francisco District Regulatory Program



California Map of U.S. Army
Corps of Engineers Regulatory Boundaries



Prepared by the San Francisco District, 10/2000

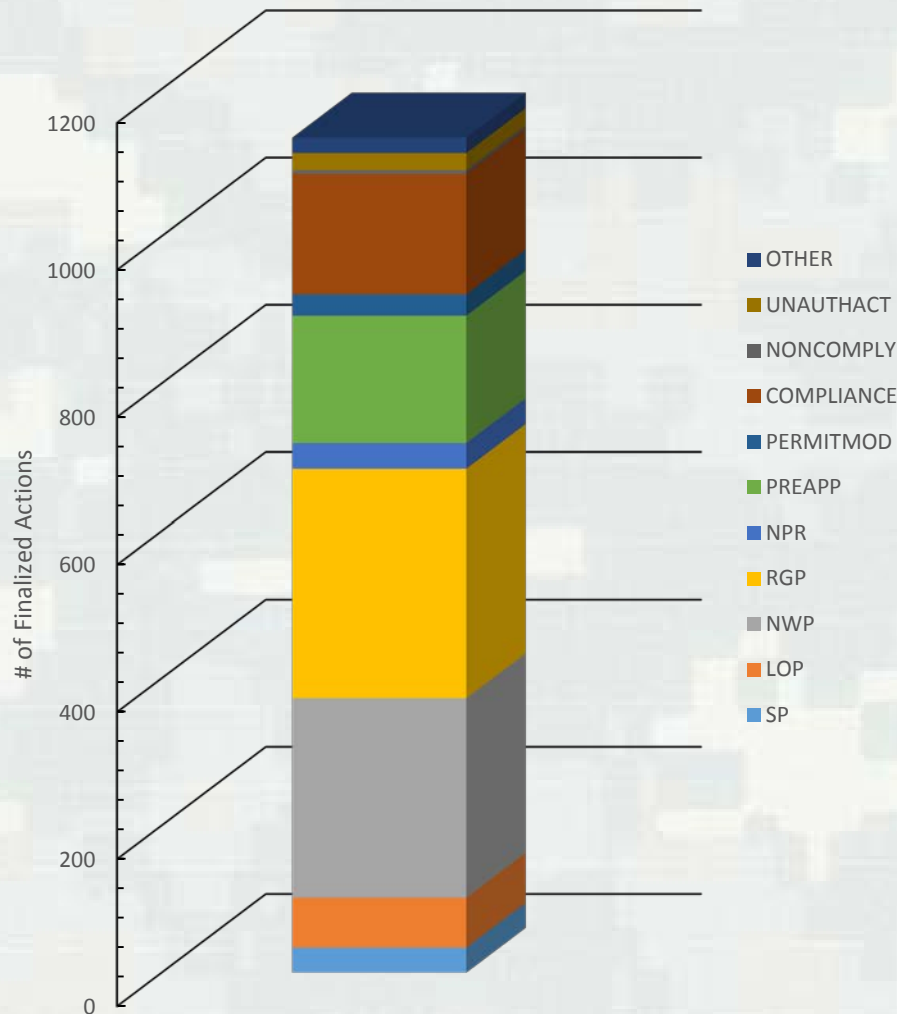
- Area of responsibility includes covering 700 miles of coastline from Oregon border to San Luis Obispo and inland to the central valley, an area of 34 thousand square miles
- \$3.2 million in FY15 to support 22 positions
- Organization includes North and South Permit Branches, Eureka Field Office, and Dredge Material Management Office.

U.S. Army
Corps of Engineers



BUILDING STRONG®

San Francisco District Regulatory Program



1,134 “Actions” delivered to the public in FY15

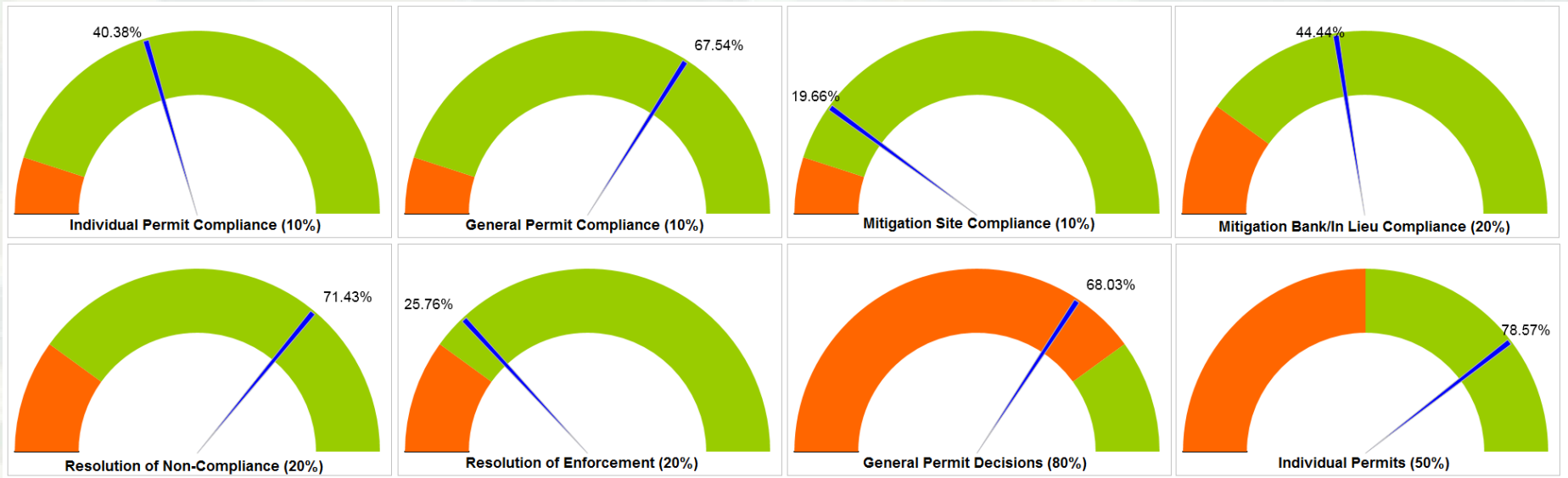
- 582 General Permits (Regional & Nationwide by Corps)
- 102 Individual Permits (Standard & Letter Permits)
- 930 Withdrawals & Denials (with & without Prejudice)
- 192 Compliance & Unauthorized
- 29 Modifications
- 283 Jurisdictional Determinations

U.S. Army
Corps of Engineers



BUILDING STRONG®

San Francisco District Regulatory Program FY15 Performance



San Francisco District

Regulatory Program Efficiencies

- 9 Regional General Permits (RGP) including RGP-5 for activities under emergency situations
- Programmatic Biological Opinions for federally listed species
- Programmatic Essential Fish Habitat Assessment for federally managed species
- WRDA 214 Agreements with SFPUC, Caltrans, CHSRA, SCWA, SCVWD
- Biweekly Interagency Dredged Material Management Office (DMMO) Meetings
- Monthly Interagency Meetings for pre-applications conferences
- Quarterly Interagency Meetings on program
- Long-term Management Strategy for San Francisco Bay dredging projects
- Various memoranda of agreements/understanding with other agencies



FY16 Look Ahead

- Same General Regulatory Funding as FY15
- Backfill of 2 positions in Eureka Field Office
- Backfill of 1 position in DMMO
- WRDA 214 Agreements with SCVWD (complete) and PG&E and recruitment of 3 additional project managers
- Recruitment for a dedicated Archeologist
- Regional technical wetland specialist located in Sacramento providing support to San Francisco
- Use of California Rapid Assessment Methodology (CRAM)
- 11 Regional General Permits under development
- Evaluation of In Lieu Fee Programs
- Return of Clean Water Rule?



Permit Decision Challenges

- Insufficient information from the applicant
- Complexity of decision making
- Documentation required
- Delays with other agencies
- Other parties attempting to use the Corps outside of our authority
- Staffing



Photo Credit: G. Fellers
U.S. Geological Survey



Questions

WE THE PEOPLE
insure domestic Tranquillity, provide for the common
and our Posterity, do ordain
and establish this Con-
stitution

