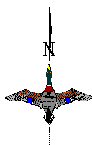
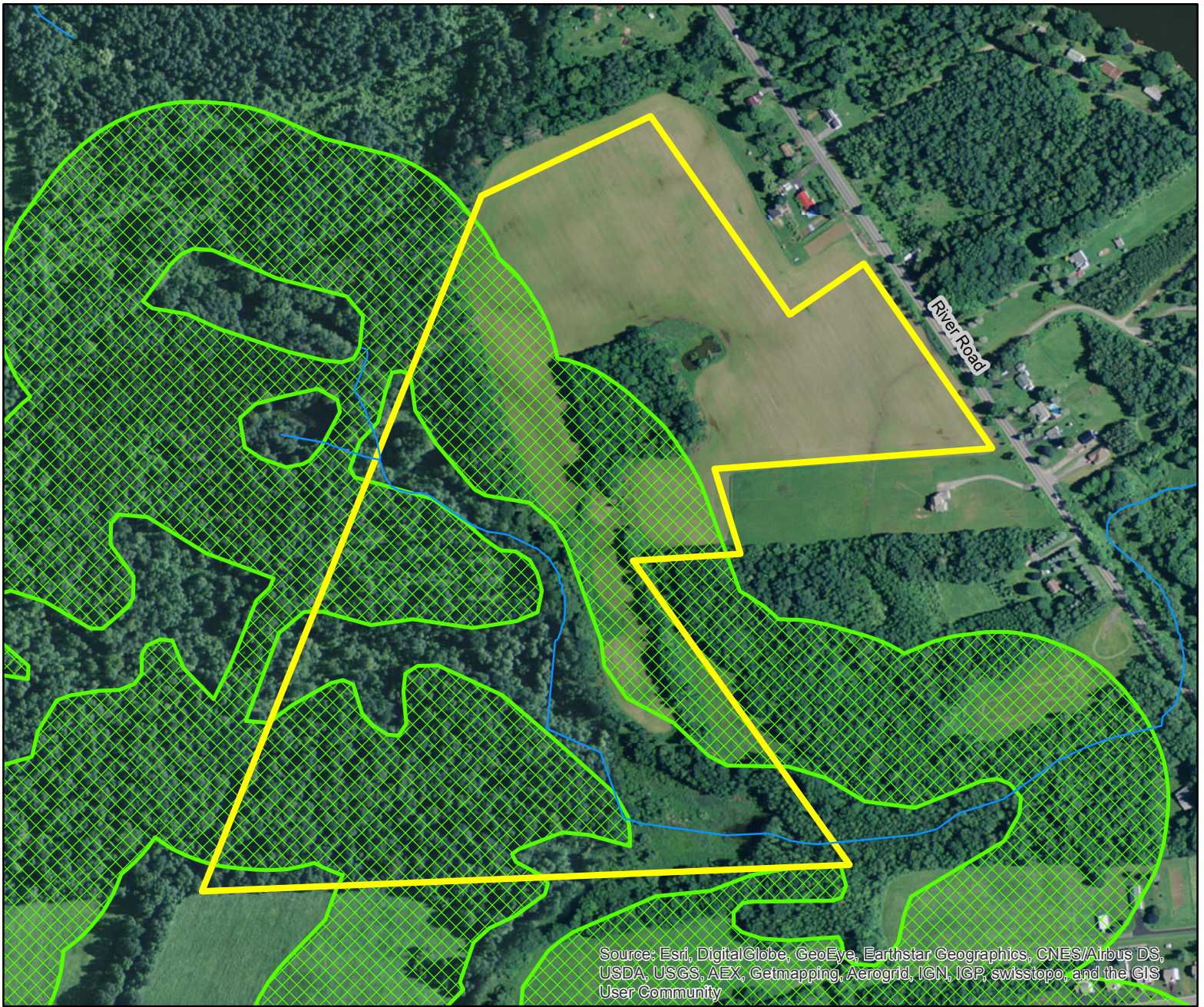


**Fig. 5: River Rd.  
Wetlands (NWI)**



- Property Boundary (83 Acres)
- Wetlands (NWI)

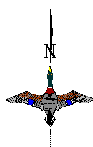


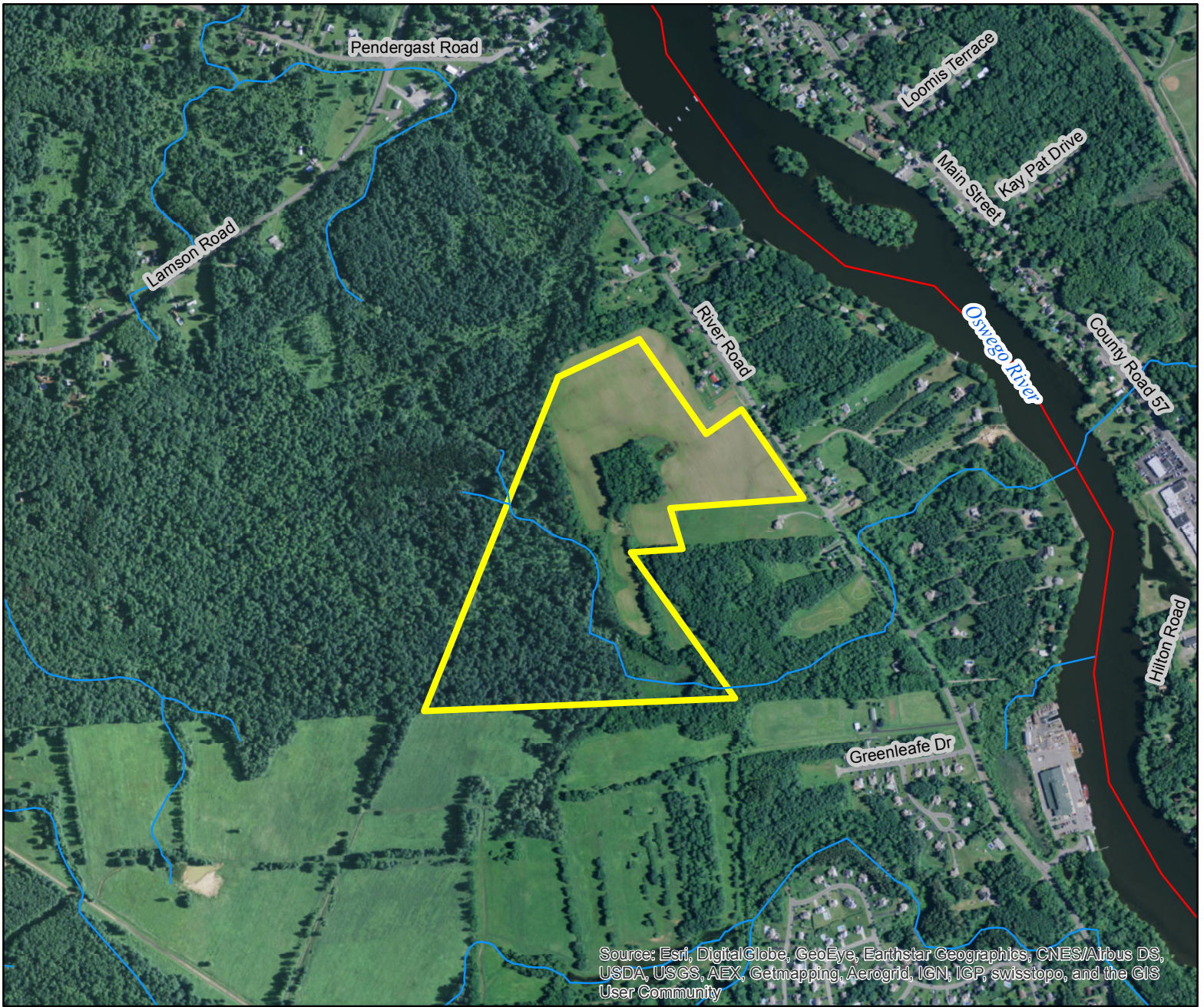


**Fig. 6: River Road Wetlands (NYSDEC)**



-  Property Boundary (83 Acres)
-  NY DEC Wetlands Checkzones

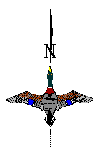


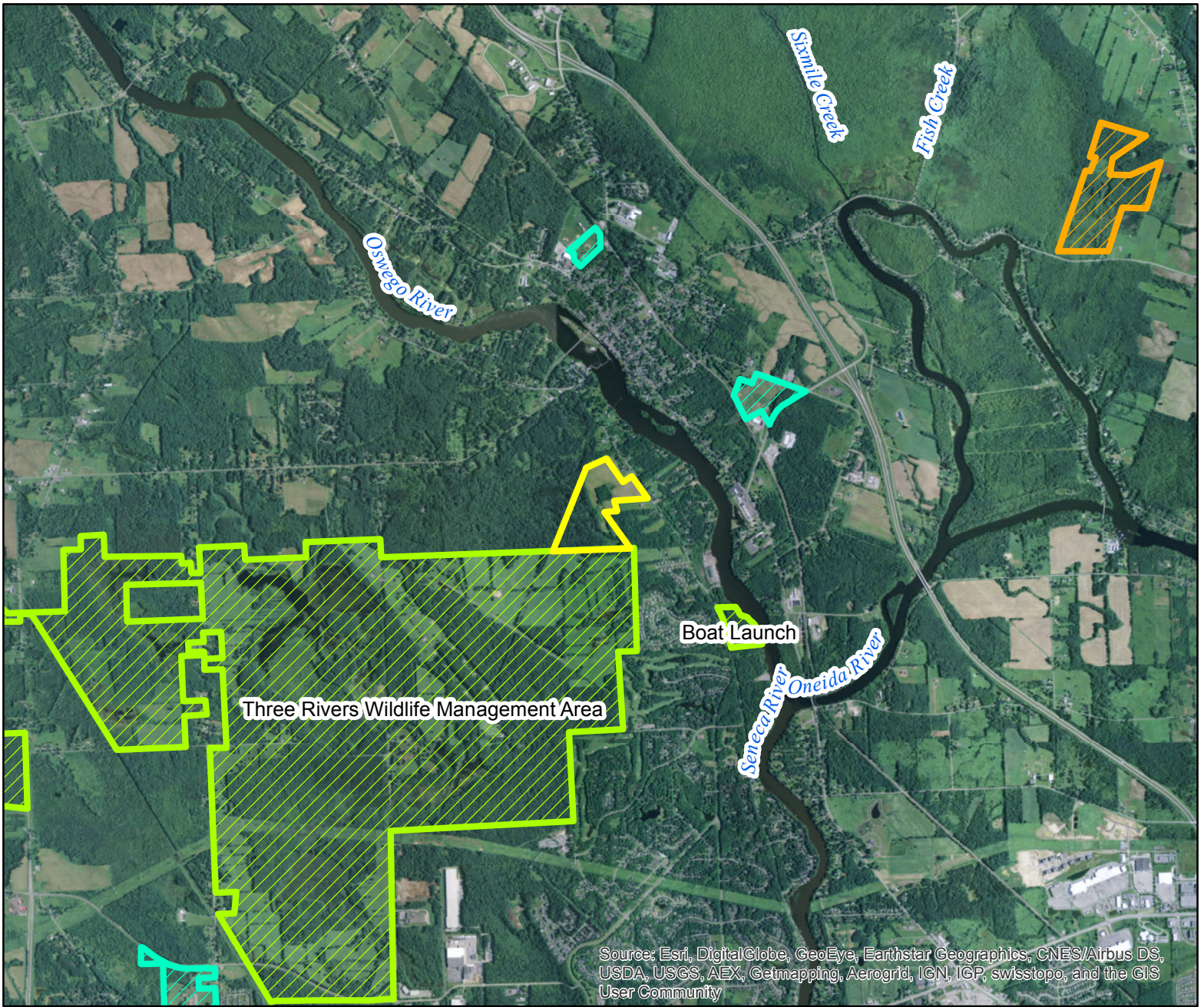


**Fig. 7: River Rd.  
303(d) Listed Waters (EPA)**



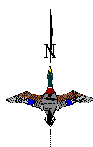
- Property Boundary (83 Acres)
- 303(d) Listed Waters

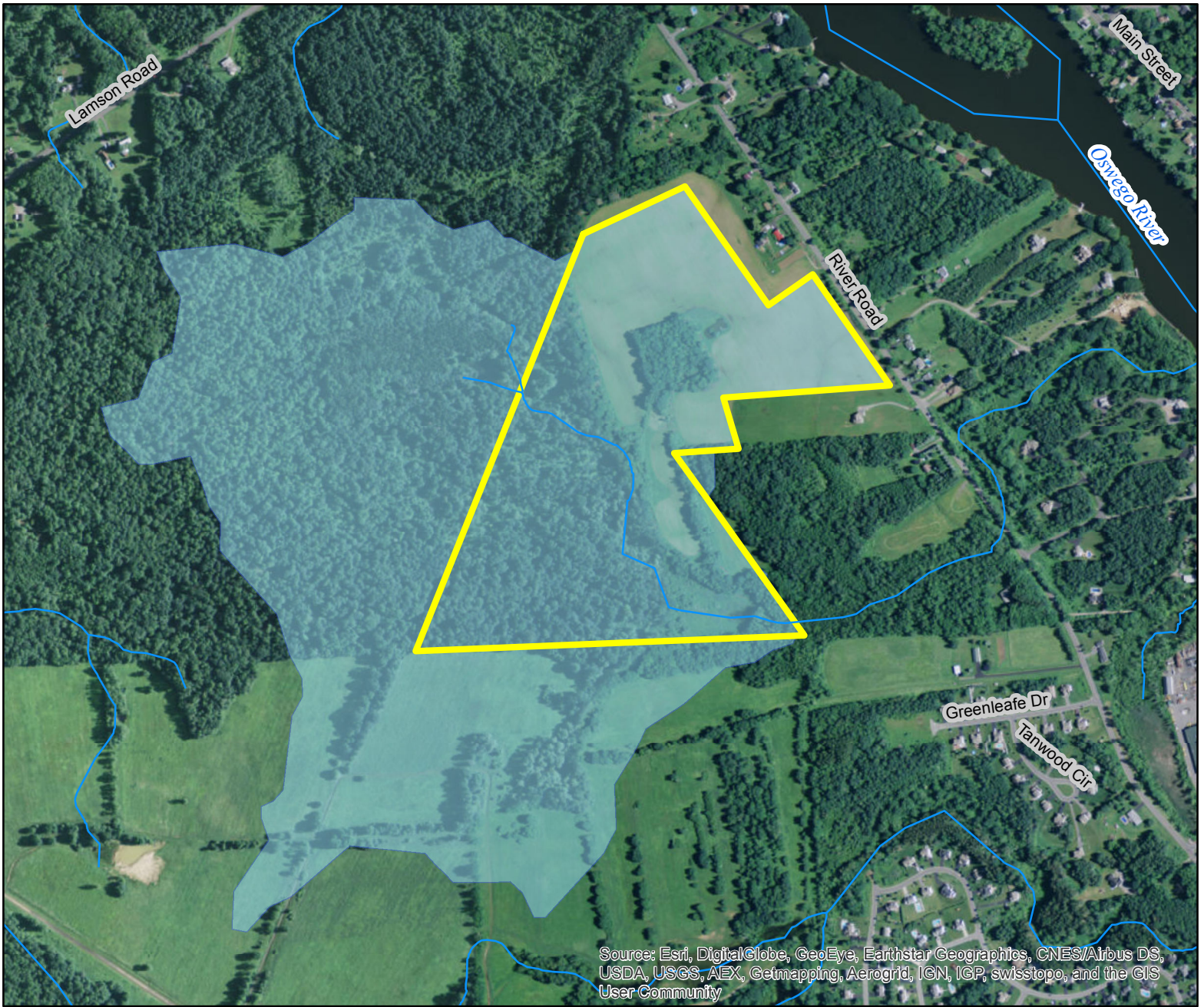




**Fig. 8: River Road Protected Lands**



-  Property Boundary (83 Acres)
-  Wetlands Reserve Program
-  State
-  Local Government

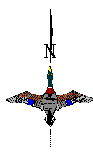


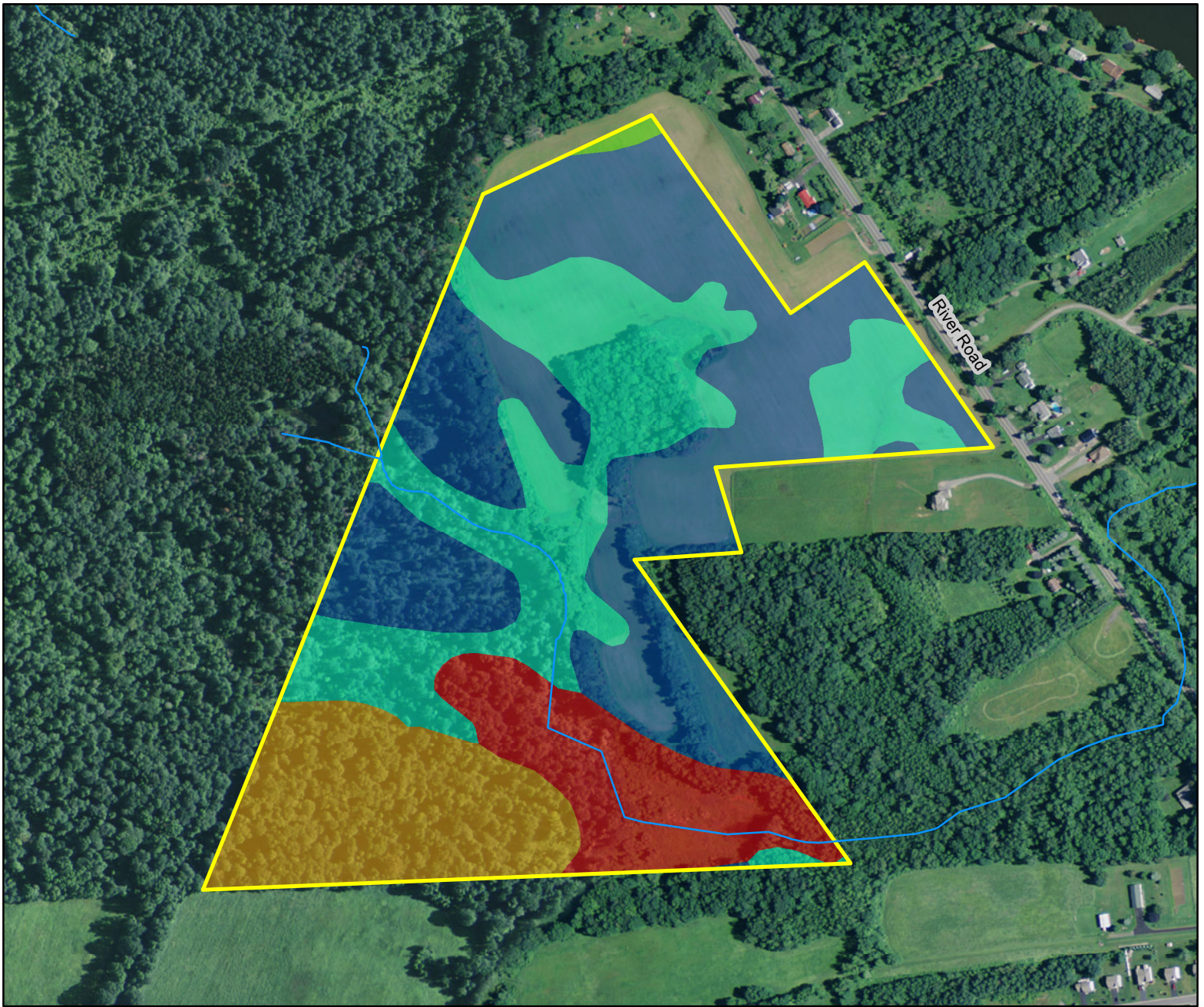


**Fig. 9: River Rd.  
Drainage Basin**

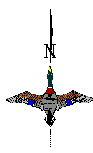
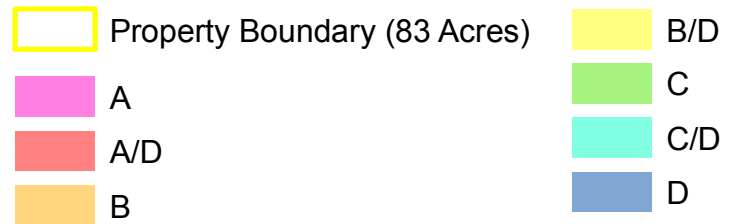


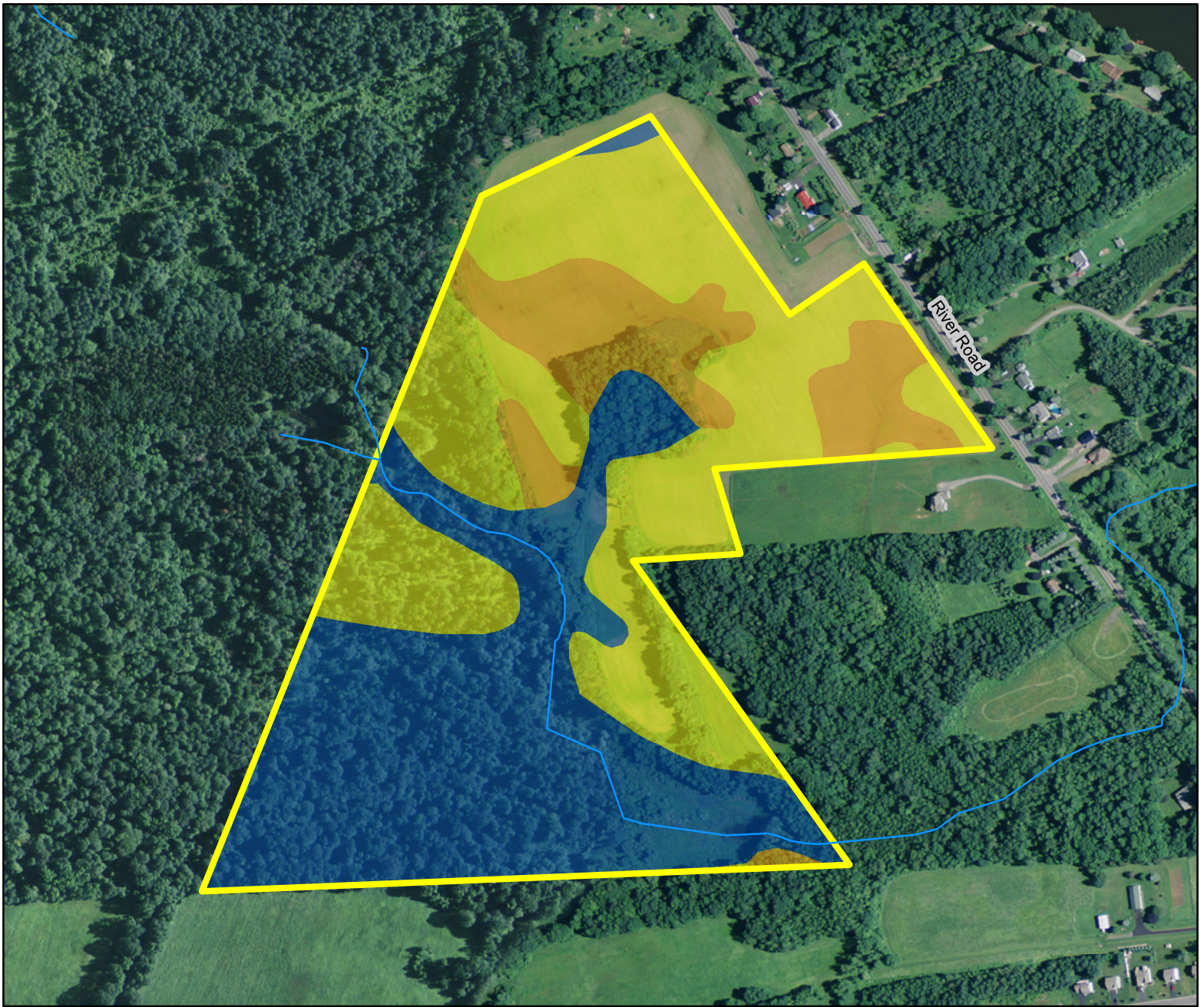
-  Property Boundary (83 Acres)
-  Drainage Basin (242.0 Acres)



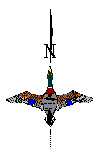
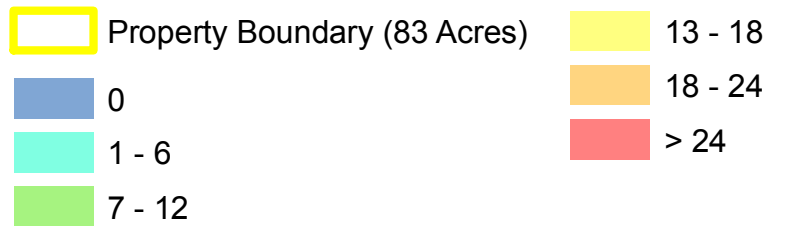


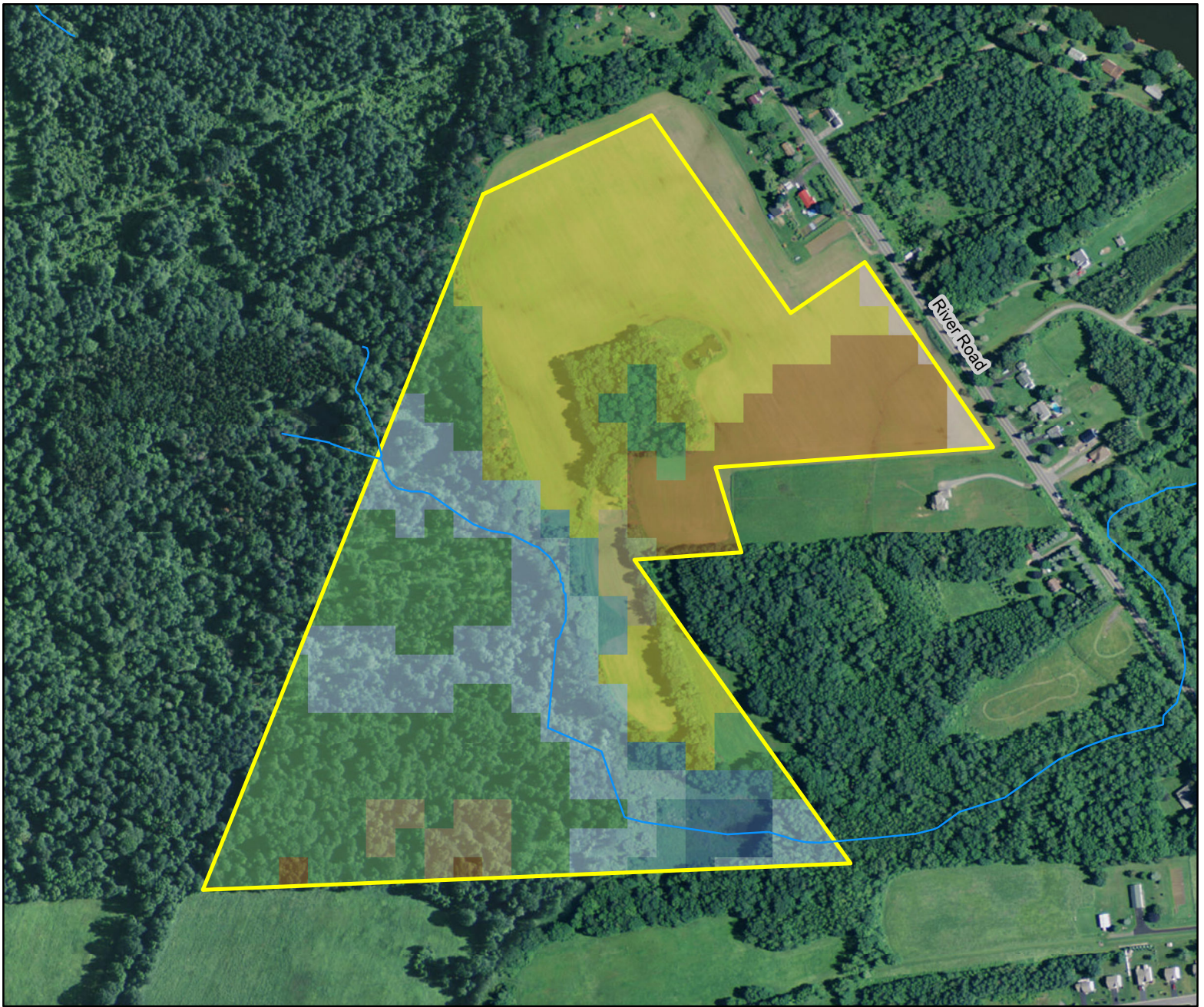
**Fig. 10: River Road  
Hydrologic Soil Group**



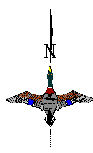
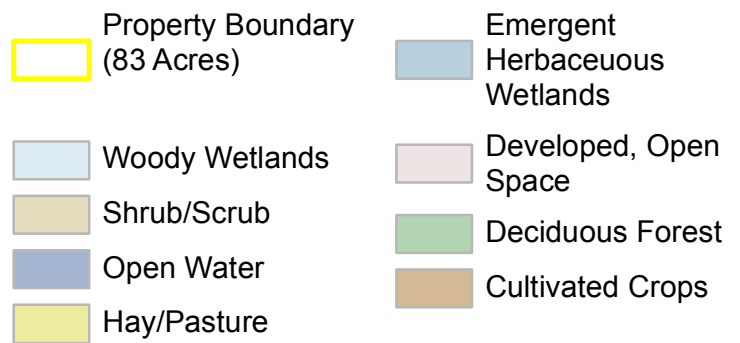


**Fig. 11: River Road Depth to Water Table (inches)**





**Fig. 12: River Road Land Cover (NLCD)**





**APPENDIX C**  
**CULTURAL RESOURCES**



# Parks, Recreation, and Historic Preservation

ANDREW M. CUOMO  
Governor

ROSE HARVEY  
Commissioner

March 22, 2016

Mr. Matthew Regan  
Wetland Mitigation Specialist  
Ducks Unlimited, Inc.  
159 Dwight Park Circle  
Syracuse, NY 13209

Re: USACE  
River Road Wetland Mitigation Project  
Town of Lysander, Onondaga County, NY  
16PR01058

Dear Mr. Regan:

Thank you for requesting the comments of the New York State Historic Preservation Office (SHPO). We have reviewed the submitted materials in accordance with Section 106 of the National Historic Preservation Act of 1966. These comments are those of the SHPO and relate only to Historic/Cultural resources. They do not include other environmental impacts to New York State Parkland that may be involved in or near your project. Such impacts must be considered as part of the environmental review of the project pursuant to the National Environmental Policy Act and/or the State Environmental Quality Review Act (New York Environmental Conservation Law Article 8).

Based on available information, your project is located in an archaeologically sensitive area. Therefore, SHPO recommends that a Phase I archaeological survey is warranted for all portions of the project that will involve ground disturbance, unless substantial prior ground disturbance can be documented. If you consider the project area to be disturbed, documentation of the disturbance will need to be reviewed by SHPO. Examples of disturbance include mining activities and multiple episodes of building construction and demolition.

Documentation of ground disturbance should include a description of the disturbance with confirming evidence. Confirmation can include current photographs and/or older photographs of the project area which illustrate the disturbance (approximately keyed to a project area map), past maps or site plans that accurately record previous disturbances, or current soil borings that verify past disruptions to the land. Agricultural activity is not considered to be substantial ground disturbance and many significant sites have been identified in previously cultivated land.

Please note that in areas with alluvial soils or fill archaeological deposits may exist below the depth of superficial disturbances, such as pavement or even deeper disturbances, depending on the thickness of the alluvium or fill. Evaluation of the possible impact of prior disturbance on archaeological sites must consider the depth of potentially culture-bearing deposits and the depth of planned disturbance by the proposed project.

---

## Division for Historic Preservation

P.O. Box 189, Waterford, New York 12188-0189 • (518) 237-8643 • [www.nysparks.com](http://www.nysparks.com)

Also, please note that wetlands may have areas of higher elevation that were suitable for habitation and/or the staging of temporary resource procurement camps. In addition, past climatic variations or modern changes in hydrology may have inundated areas formerly available for occupation.

A Phase I survey is designed to determine the presence or absence of archaeological sites or other cultural resources in the project's area of potential effect. The SHPO can provide standards for conducting cultural resource investigations upon request. Cultural resource surveys and survey reports that meet these standards will be accepted and approved by the SHPO.

Our office does not conduct cultural resources surveys. A 36 CFR 61 qualified archaeologist should be retained to undertake the Phase I survey. Many archaeological consulting firms advertise their availability in the yellow pages. The services of qualified archaeologists can also be obtained by contacting local, regional, or statewide professional archaeological organizations. Phase I surveys can be expected to vary in cost per mile of right-of-way or by the number of acres impacted. We encourage you to contact a number of consulting firms and compare examples of each firm's work to obtain the best product.

Please also be aware that a Section 233 permit from the New York State Education Department (SED) may be necessary before any archaeological survey activities are conducted on State-owned land. If any portion of the project includes the lands of New York State you should contact the SED before initiating survey activities. The SED contact is Christina B. Rieth and she can be reached at (518) 402-5975. Section 233 permits are not required for projects on private land.

If you have any questions please don't hesitate to contact me.

Sincerely,



Philip A. Perazio, Historic Preservation Program Analyst - Archaeology Unit

Phone: 518-268-2175

e-mail: [philip.perazio@parks.ny.gov](mailto:philip.perazio@parks.ny.gov)

via e-mail only

**APPENDIX D**  
**WILDLIFE USAGE**

# River Road

---

## *IPaC Trust Resource Report*

Generated December 03, 2015 11:55 AM MST

This report is for informational purposes only and should not be used for planning or analyzing project-level impacts. For projects that require FWS review, please return to this project on the IPaC website and request an official species list from the Regulatory Documents page.



US Fish &amp; Wildlife Service

# IPaC Trust Resource Report



## Project Description

**NAME**

River Road

**PROJECT CODE**

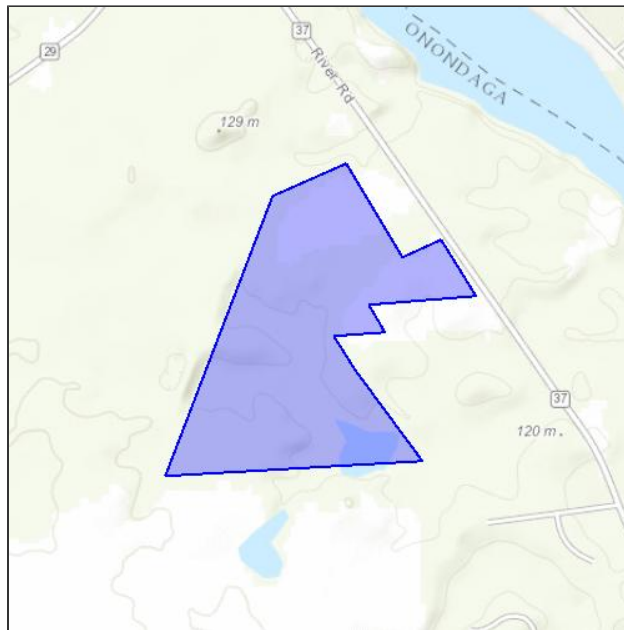
MPQHH-5PS2Z-BMPML-YMSEW-J3XQZA

**LOCATION**

Onondaga County, New York

**DESCRIPTION**

Wetland Mitigation



## U.S. Fish & Wildlife Contact Information

Species in this report are managed by:

**New York Ecological Services Field Office**

3817 Luker Road

Cortland, NY 13045-9349

(607) 753-9334

# Endangered Species

Proposed, candidate, threatened, and endangered species that are managed by the [Endangered Species Program](#) and should be considered as part of an effect analysis for this project.

This unofficial species list is for informational purposes only and does not fulfill the requirements under [Section 7](#) of the Endangered Species Act, which states that Federal agencies are required to "request of the Secretary of Interior information whether any species which is listed or proposed to be listed may be present in the area of a proposed action." This requirement applies to projects which are conducted, permitted or licensed by any Federal agency.

A letter from the local office and a species list which fulfills this requirement can be obtained by returning to this project on the IPaC website and requesting an official species list on the Regulatory Documents page.

## Mammals

**Indiana Bat** *Myotis sodalis* Endangered

CRITICAL HABITAT

**No critical habitat** has been designated for this species.

<https://ecos.fws.gov/speciesProfile/profile/speciesProfile.action?sPCODE=A000>

**Northern Long-eared Bat** *Myotis septentrionalis* Threatened

CRITICAL HABITAT

**No critical habitat** has been designated for this species.

<https://ecos.fws.gov/speciesProfile/profile/speciesProfile.action?sPCODE=A0JE>

## Reptiles

**Bog (=muhlenberg) Turtle** *Clemmys muhlenbergii* Threatened

CRITICAL HABITAT

**No critical habitat** has been designated for this species.

<https://ecos.fws.gov/speciesProfile/profile/speciesProfile.action?sPCODE=C048>

## Critical Habitats

Potential effects to critical habitat(s) within the project area must be analyzed along with the endangered species themselves.

**There is no critical habitat within this project area**

# Migratory Birds

Birds are protected by the [Migratory Bird Treaty Act](#) and the [Bald and Golden Eagle Protection Act](#).

Any activity which results in the take of migratory birds or eagles is prohibited unless authorized by the U.S. Fish and Wildlife Service (1). There are no provisions for allowing the take of migratory birds that are unintentionally killed or injured.

You are responsible for complying with the appropriate regulations for the protection of birds as part of this project. This involves analyzing potential impacts and implementing appropriate conservation measures for all project activities.

<p><b>American Bittern</b> <i>Botaurus lentiginosus</i>            Season: Breeding  <a href="https://ecos.fws.gov/speciesProfile/profile/speciesProfile.action?sPCODE=B0F3">https://ecos.fws.gov/speciesProfile/profile/speciesProfile.action?sPCODE=B0F3</a></p>	Bird of conservation concern
<p><b>Bald Eagle</b> <i>Haliaeetus leucocephalus</i>            Year-round  <a href="https://ecos.fws.gov/speciesProfile/profile/speciesProfile.action?sPCODE=B008">https://ecos.fws.gov/speciesProfile/profile/speciesProfile.action?sPCODE=B008</a></p>	Bird of conservation concern
<p><b>Black Tern</b> <i>Chlidonias niger</i>            Season: Breeding  <a href="https://ecos.fws.gov/speciesProfile/profile/speciesProfile.action?sPCODE=B09F">https://ecos.fws.gov/speciesProfile/profile/speciesProfile.action?sPCODE=B09F</a></p>	Bird of conservation concern
<p><b>Black-billed Cuckoo</b> <i>Coccyzus erythrophthalmus</i>            Season: Breeding  <a href="https://ecos.fws.gov/speciesProfile/profile/speciesProfile.action?sPCODE=B0HI">https://ecos.fws.gov/speciesProfile/profile/speciesProfile.action?sPCODE=B0HI</a></p>	Bird of conservation concern
<p><b>Blue-winged Warbler</b> <i>Vermivora pinus</i>            Season: Breeding</p>	Bird of conservation concern
<p><b>Canada Warbler</b> <i>Wilsonia canadensis</i>            Season: Breeding</p>	Bird of conservation concern
<p><b>Common Tern</b> <i>Sterna hirundo</i>            Season: Breeding  <a href="https://ecos.fws.gov/speciesProfile/profile/speciesProfile.action?sPCODE=B09G">https://ecos.fws.gov/speciesProfile/profile/speciesProfile.action?sPCODE=B09G</a></p>	Bird of conservation concern
<p><b>Golden-winged Warbler</b> <i>Vermivora chrysoptera</i>            Season: Breeding  <a href="https://ecos.fws.gov/speciesProfile/profile/speciesProfile.action?sPCODE=B0G4">https://ecos.fws.gov/speciesProfile/profile/speciesProfile.action?sPCODE=B0G4</a></p>	Bird of conservation concern
<p><b>Least Bittern</b> <i>Ixobrychus exilis</i>            Season: Breeding</p>	Bird of conservation concern
<p><b>Olive-sided Flycatcher</b> <i>Contopus cooperi</i>            Season: Breeding  <a href="https://ecos.fws.gov/speciesProfile/profile/speciesProfile.action?sPCODE=B0AN">https://ecos.fws.gov/speciesProfile/profile/speciesProfile.action?sPCODE=B0AN</a></p>	Bird of conservation concern
<p><b>Peregrine Falcon</b> <i>Falco peregrinus</i>            Season: Breeding  <a href="https://ecos.fws.gov/speciesProfile/profile/speciesProfile.action?sPCODE=B0FU">https://ecos.fws.gov/speciesProfile/profile/speciesProfile.action?sPCODE=B0FU</a></p>	Bird of conservation concern
<p><b>Pied-billed Grebe</b> <i>Podilymbus podiceps</i>            Season: Breeding</p>	Bird of conservation concern



<b>Prairie Warbler</b> <i>Dendroica discolor</i> Season: Breeding	Bird of conservation concern
<b>Red-headed Woodpecker</b> <i>Melanerpes erythrocephalus</i> Season: Breeding	Bird of conservation concern
<b>Short-eared Owl</b> <i>Asio flammeus</i> Season: Wintering <a href="https://ecos.fws.gov/speciesProfile/profile/speciesProfile.action?spcode=B0HD">https://ecos.fws.gov/speciesProfile/profile/speciesProfile.action?spcode=B0HD</a>	Bird of conservation concern
<b>Upland Sandpiper</b> <i>Bartramia longicauda</i> Season: Breeding <a href="https://ecos.fws.gov/speciesProfile/profile/speciesProfile.action?spcode=B0HC">https://ecos.fws.gov/speciesProfile/profile/speciesProfile.action?spcode=B0HC</a>	Bird of conservation concern
<b>Willow Flycatcher</b> <i>Empidonax traillii</i> Season: Breeding <a href="https://ecos.fws.gov/speciesProfile/profile/speciesProfile.action?spcode=B0F6">https://ecos.fws.gov/speciesProfile/profile/speciesProfile.action?spcode=B0F6</a>	Bird of conservation concern
<b>Wood Thrush</b> <i>Hylocichla mustelina</i> Season: Breeding	Bird of conservation concern

## Refuges

Any activity proposed on [National Wildlife Refuge](#) lands must undergo a 'Compatibility Determination' conducted by the Refuge. If your project overlaps or otherwise impacts a Refuge, please contact that Refuge to discuss the authorization process.

**There are no refuges within this project area**

# Wetlands

Impacts to [NWI wetlands](#) and other aquatic habitats from your project may be subject to regulation under Section 404 of the Clean Water Act, or other State/Federal Statutes.

Project proponents should discuss the relationship of these requirements to their project with the Regulatory Program of the appropriate [U.S. Army Corps of Engineers District](#).

## DATA LIMITATIONS

The Service's objective of mapping wetlands and deepwater habitats is to produce reconnaissance level information on the location, type and size of these resources. The maps are prepared from the analysis of high altitude imagery. Wetlands are identified based on vegetation, visible hydrology and geography. A margin of error is inherent in the use of imagery; thus, detailed on-the-ground inspection of any particular site may result in revision of the wetland boundaries or classification established through image analysis.

The accuracy of image interpretation depends on the quality of the imagery, the experience of the image analysts, the amount and quality of the collateral data and the amount of ground truth verification work conducted. Metadata should be consulted to determine the date of the source imagery used and any mapping problems.

Wetlands or other mapped features may have changed since the date of the imagery or field work. There may be occasional differences in polygon boundaries or classifications between the information depicted on the map and the actual conditions on site.

## DATA EXCLUSIONS

Certain wetland habitats are excluded from the National mapping program because of the limitations of aerial imagery as the primary data source used to detect wetlands. These habitats include seagrasses or submerged aquatic vegetation that are found in the intertidal and subtidal zones of estuaries and nearshore coastal waters. Some deepwater reef communities (coral or tubercid worm reefs) have also been excluded from the inventory. These habitats, because of their depth, go undetected by aerial imagery.

## DATA PRECAUTIONS

Federal, state, and local regulatory agencies with jurisdiction over wetlands may define and describe wetlands in a different manner than that used in this inventory. There is no attempt, in either the design or products of this inventory, to define the limits of proprietary jurisdiction of any Federal, state, or local government or to establish the geographical scope of the regulatory programs of government agencies. Persons intending to engage in activities involving modifications within or adjacent to wetland areas should seek the advice of appropriate federal, state, or local agencies concerning specified agency regulatory programs and proprietary jurisdictions that may affect such activities.

## Freshwater Forested/shrub Wetland

<b>PFO1E</b>	11.8 acres
<b>PFO1/SS1E</b>	9.42 acres
<b>PSS1Eh</b>	1.8 acres

## Freshwater Pond

<b>PUBHh</b>	5.77 acres
--------------	------------



# United States Department of the Interior



FISH AND WILDLIFE SERVICE  
New York Ecological Services Field Office  
3817 LUKER ROAD  
CORTLAND, NY 13045  
PHONE: (607)753-9334 FAX: (607)753-9699  
URL: [www.fws.gov/northeast/nyfo/es/section7.htm](http://www.fws.gov/northeast/nyfo/es/section7.htm)

Consultation Code: 05E1NY00-2016-SLI-0388

December 03, 2015

Event Code: 05E1NY00-2016-E-00961

Project Name: River Road

Subject: List of threatened and endangered species that may occur in your proposed project location, and/or may be affected by your proposed project

## To Whom It May Concern:

The enclosed species list identifies threatened, endangered, proposed and candidate species, as well as proposed and final designated critical habitat, that may occur within the boundary of your proposed project and/or may be affected by your proposed project. The species list fulfills the requirements of the U.S. Fish and Wildlife Service (Service) under section 7(c) of the Endangered Species Act (ESA) of 1973, as amended (16 U.S.C. 1531 *et seq.*). This list can also be used to determine whether listed species may be present for projects without federal agency involvement. New information based on updated surveys, changes in the abundance and distribution of species, changed habitat conditions, or other factors could change this list.

Please feel free to contact us if you need more current information or assistance regarding the potential impacts to federally proposed, listed, and candidate species and federally designated and proposed critical habitat. Please note that under 50 CFR 402.12(e) of the regulations implementing section 7 of the ESA, the accuracy of this species list should be verified after 90 days. This verification can be completed formally or informally as desired. The Service recommends that verification be completed by visiting the ECOS-IPaC site at regular intervals during project planning and implementation for updates to species lists and information. An updated list may be requested through the ECOS-IPaC system by completing the same process used to receive the enclosed list. If listed, proposed, or candidate species were identified as potentially occurring in the project area, coordination with our office is encouraged. Information on the steps involved with assessing potential impacts from projects can be found at: <http://www.fws.gov/northeast/nyfo/es/section7.htm>

Please be aware that bald and golden eagles are protected under the Bald and Golden Eagle Protection Act (16 U.S.C. 668 *et seq.*), and projects affecting these species may require development of an eagle conservation plan (

[http://www.fws.gov/windenergy/eagle\\_guidance.html](http://www.fws.gov/windenergy/eagle_guidance.html)). Additionally, wind energy projects should follow the Services wind energy guidelines (<http://www.fws.gov/windenergy/>) for minimizing impacts to migratory birds and bats.

Guidance for minimizing impacts to migratory birds for projects including communications towers (e.g., cellular, digital television, radio, and emergency broadcast) can be found at: <http://www.fws.gov/migratorybirds/CurrentBirdIssues/Hazards/towers/towers.htm>; <http://www.towerkill.com>; and <http://www.fws.gov/migratorybirds/CurrentBirdIssues/Hazards/towers/comtow.html>.

We appreciate your concern for threatened and endangered species. The Service encourages Federal agencies to include conservation of threatened and endangered species into their project planning to further the purposes of the ESA. Please include the Consultation Tracking Number in the header of this letter with any request for consultation or correspondence about your project that you submit to our office.

Attachment



United States Department of Interior  
Fish and Wildlife Service

Project name: River Road

## Official Species List

**Provided by:**

New York Ecological Services Field Office

3817 LUKER ROAD

CORTLAND, NY 13045

(607) 753-9334

<http://www.fws.gov/northeast/nyfo/es/section7.htm>

**Consultation Code:** 05E1NY00-2016-SLI-0388

**Event Code:** 05E1NY00-2016-E-00961

**Project Type:** LAND - RESTORATION / ENHANCEMENT

**Project Name:** River Road

**Project Description:** Wetland Mitigation

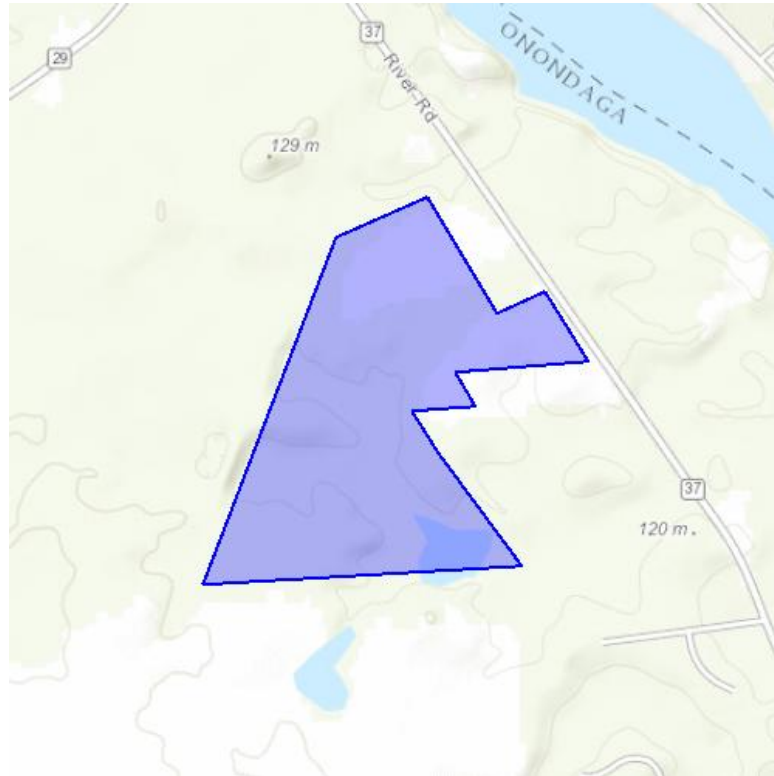
**Please Note:** The FWS office may have modified the Project Name and/or Project Description, so it may be different from what was submitted in your previous request. If the Consultation Code matches, the FWS considers this to be the same project. Contact the office in the 'Provided by' section of your previous Official Species list if you have any questions or concerns.



United States Department of Interior  
Fish and Wildlife Service

Project name: River Road

### Project Location Map:



**Project Coordinates:** MULTIPOLYGON (((-76.30217274449286 43.21932635286075, -76.29979148004294 43.22009676775332, -76.29799129072231 43.217903554525954, -76.29674570920845 43.21831285092463, -76.29562297047761 43.21700535667467, -76.29909554855641 43.21677874397036, -76.2985608832093 43.21614440656478, -76.30022669238618 43.2160492441287, -76.29952949568964 43.21527331950827, -76.29737652410726 43.21313607437038, -76.30561652828838 43.21279598145026, -76.30217274449286 43.21932635286075)))

**Project Counties:** Onondaga, NY



United States Department of Interior  
Fish and Wildlife Service

Project name: River Road

## Endangered Species Act Species List

There are a total of 3 threatened or endangered species on your species list. Species on this list should be considered in an effects analysis for your project and could include species that exist in another geographic area. For example, certain fish may appear on the species list because a project could affect downstream species. Critical habitats listed under the **Has Critical Habitat** column may or may not lie within your project area. See the **Critical habitats within your project area** section further below for critical habitat that lies within your project. Please contact the designated FWS office if you have questions.

Mammals	Status	Has Critical Habitat	Condition(s)
Indiana bat ( <i>Myotis sodalis</i> ) Population: Entire	Endangered		
Northern long-eared Bat ( <i>Myotis septentrionalis</i> )	Threatened		
<b>Reptiles</b>			
Bog Turtle ( <i>Clemmys muhlenbergii</i> ) Population: northern	Threatened		





United States Department of Interior  
Fish and Wildlife Service

Project name: River Road

## **Critical habitats that lie within your project area**

There are no critical habitats within your project area.