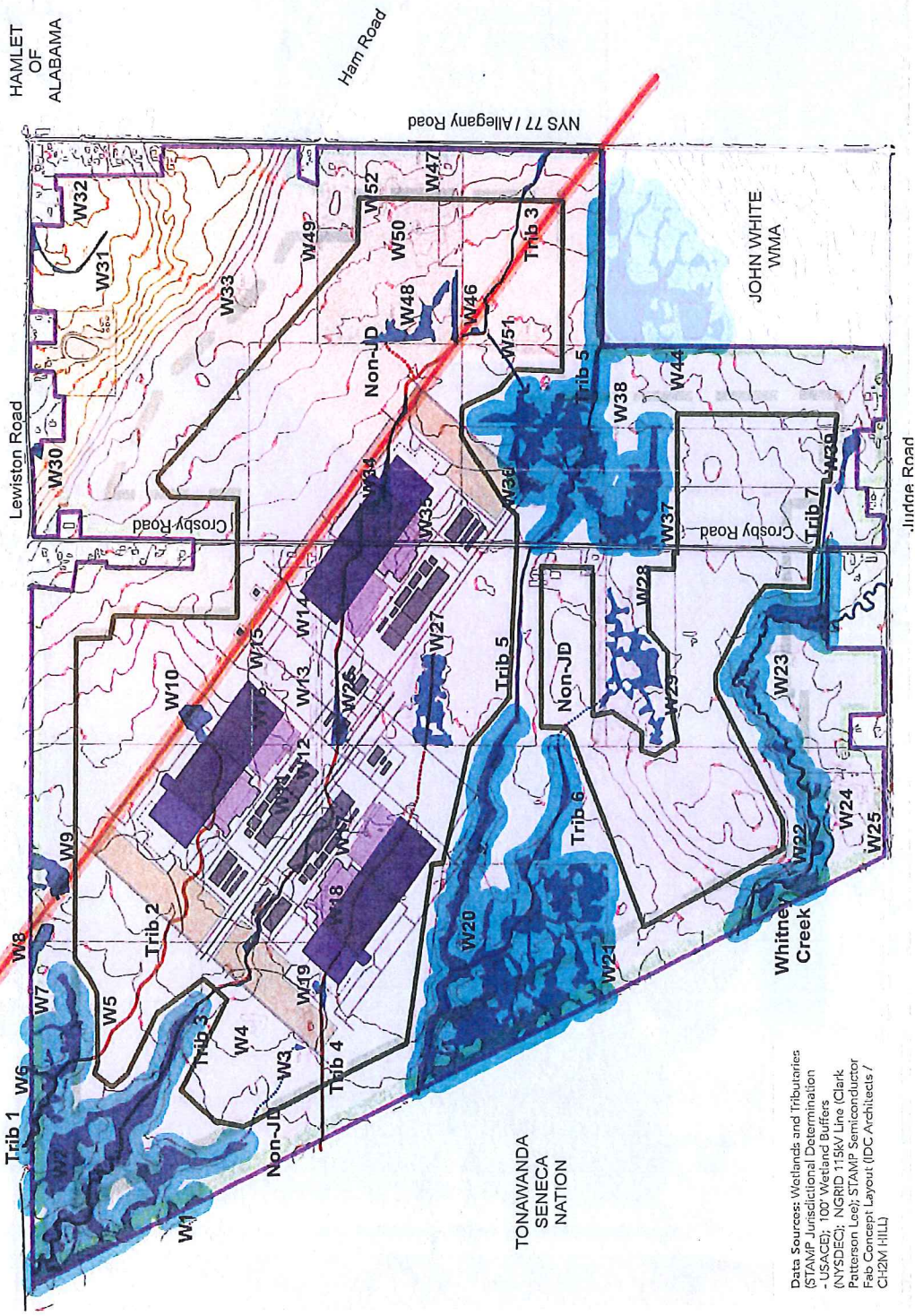


**Notes:**

- FGEIS Wetland Impacts (& additional tributaries)
- 115kV power line remains
- North Crosby houses remain
- Crosby Road to be rerouted
- Fabs do not fit with needed access and circulation
- Reasonably systematic arrangement of 3 fabs does not require any work
- Industry layout requirements minimally met

**LEGEND**

[Purple line]	STAMP Project Boundary
[Blue area]	Wetlands
[Light blue area]	100' NYSDEC Buffer
[Black line]	Regulated Tributaries
[Red line]	NGRID 115kV Line & Setback
[Light purple area]	Technology District 1 (TD1) Zoning
[Light blue area]	Technology District 2 (TD2) Zoning
[Light green area]	Technology District 3 (TD3) Zoning
[Dark purple area]	Generalized Buildable Areas
[Medium purple area]	Semiconductor Manufacturing Fab
[Light purple area]	Semiconductor Office/Labs
[Light blue area]	Semiconductor Gas & Chemical Support
[Light green area]	Semiconductor Utility Support
[Light yellow area]	Semiconductor Parking Areas



Data Sources: Wetlands and Tributaries (STAMP) Jurisdictional Determination -USACE; 100' Wetland Buffers (NYSDEC); NGRID 115kV Line (Clark Patterson Leep); STAMP Semiconductor Fab Concept Layout (IDC Architects / CH2M HILL)



CONSERVATION CONNECTS, LLC  
 PO Box 358, Alexander, NY 14054  
 Tel: 716-560-4768



**On-site Alternative - A - 4**

WNY STAMP – USACE/NYSDEC Joint Permit Application, 2013  
 Town of Alabama, Genesee County, NY

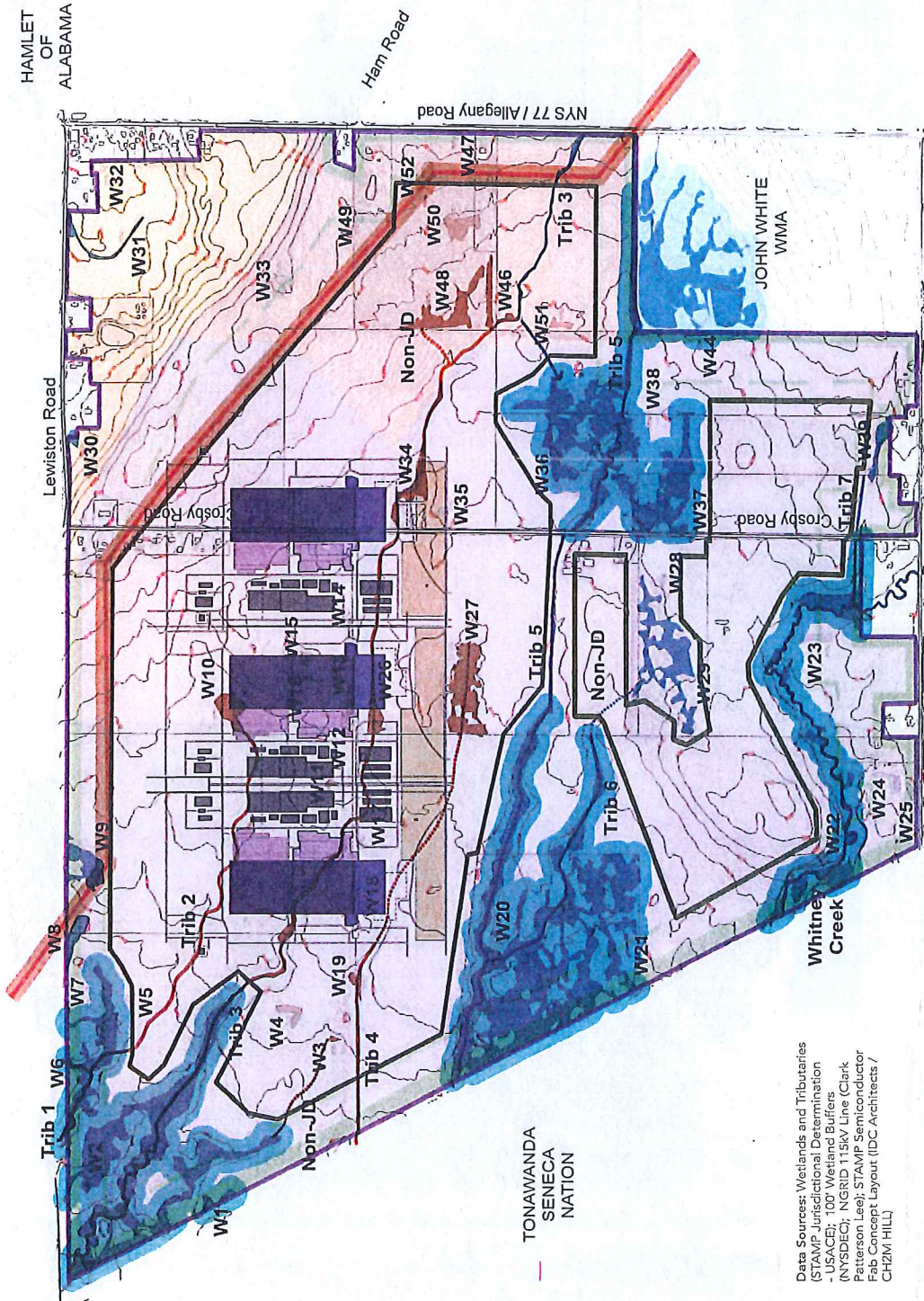
**FIGURE 5-18**

WNY STAMP  
 DA Processing No. 2010-00964  
 Genesee County, New York  
 Quad: Akron  
 Sheet 11 of 20





HAMLET  
OF  
ALABAMA



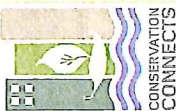
**LEGEND**

- STAMP Project Boundary
- Wetlands
- 100' NYSDEC Buffer
- Regulated Tributaries
- NGRID 115kV Line & Seaback
- Technology District 1 (TD1)
- Zoning
- Technology District 2 (TD2)
- Zoning
- Technology District 3 (TD3)
- Zoning
- Generalized Buildable Areas
- Semiconductor Manufacturing Fab
- Semiconductor Office/Labs
- Semiconductor Gas & Chemical Support
- Semiconductor Utility Support
- Semiconductor Parking Areas



TONAWANDA  
SENECA  
NATION

Data Sources: Wetlands and Tributaries  
(STAMP) Jurisdictional Determination  
(USACE); 100' Wetland Buffer  
(NYSDEC); NGRID 115kV Line (Clark  
Patterson Lee); STAMP; Semiconductor  
Fab Concept Layout (IDC Architects /  
CH2M HILL)



CONSERVATION CONNECTS, LLC  
PO Box 358, Alexander, NY 14054  
Tel: 716-560-1768



©2013 IDC Architects/CH2M HILL. Confidential and Proprietary

**On-site Alternative - B - 1**

WNY STAMP – USACE/NYSDEC Joint Permit Application, 2013  
Town of Alabama, Genesee County, NY

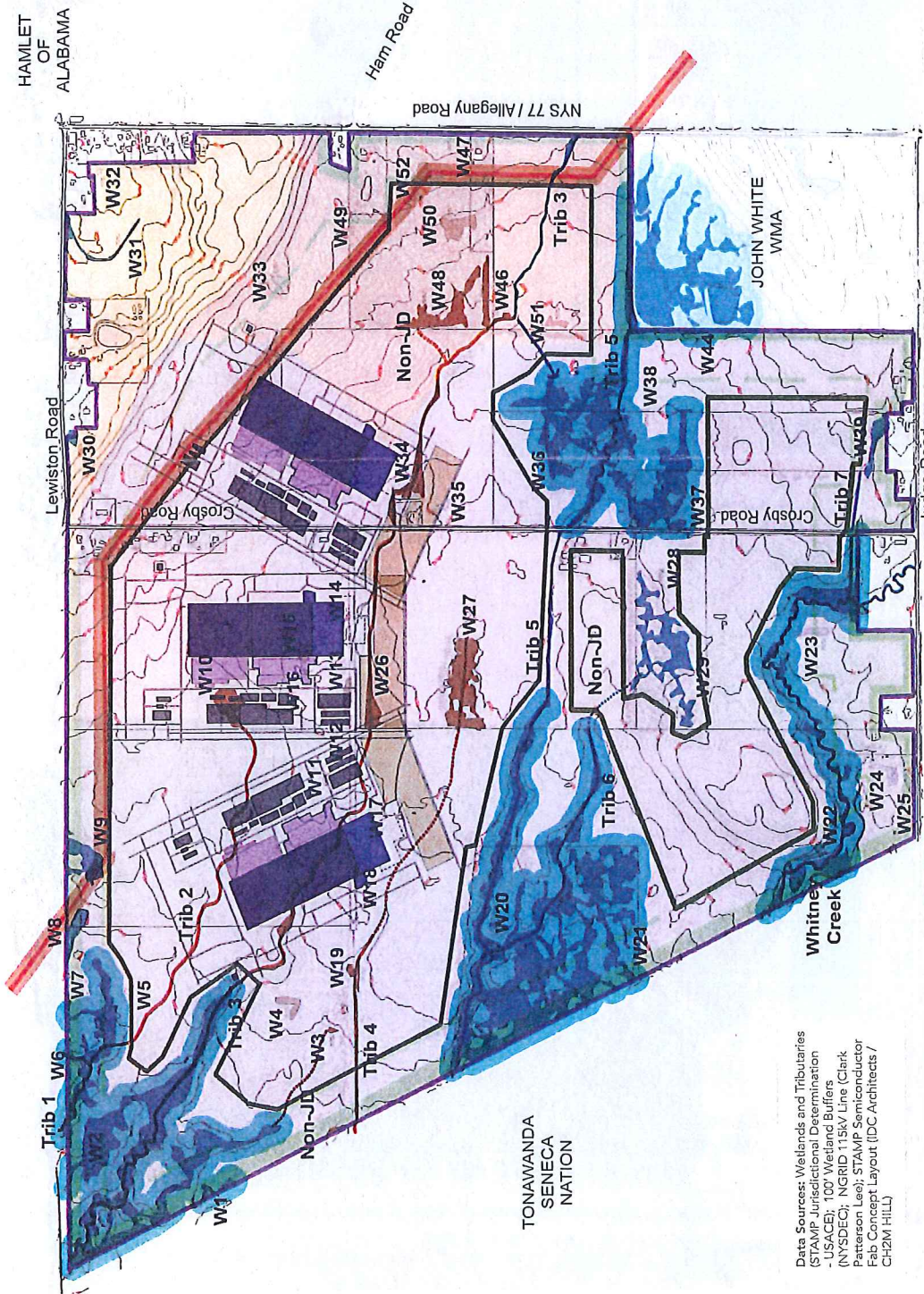
**FIGURE  
5-21**

WNY STAMP  
DA Processing No. 2010-00964  
Genesee County, New York  
Quad: Akron  
Sheet 12 of 20





HAMLET OF ALABAMA



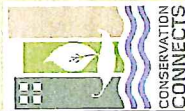
**LEGEND**

- STAMP Project Boundary
- Wetlands
- 100' NYSDEC Buffer
- Regulated Tributaries
- NGRID 115kV Line & Setback
- Technology District 1 (TD1) Zoning
- Technology District 2 (TD2) Zoning
- Technology District 3 (TD3) Zoning
- Generalized Buildable Areas
- Semiconductor Manufacturing Fab
- Semiconductor Office/Labs
- Semiconductor Gas & Chemical Support
- Semiconductor Utility Support
- Semiconductor Parking Areas



TONAWANDA SENECA NATION

Data Sources: Wetlands and Tributaries (STAMP Jurisdictional Determination -USACE); 100' Wetland Buffers (NYSDEC); NGRID 115kV Line (Clark Patterson Leeb); STAMP Semiconductor Fab Concept Layout (IDC Architects / CH2M HILL)



CONSERVATION CONNECTS, LLC  
PO Box 358, Alexander, NY 14054  
Tel: 716-560-1768



**On-site Alternative - B - 2**

WNY STAMP – USACE/NYSDEC Joint Permit Application, 2013  
Town of Alabama, Genesee County, NY

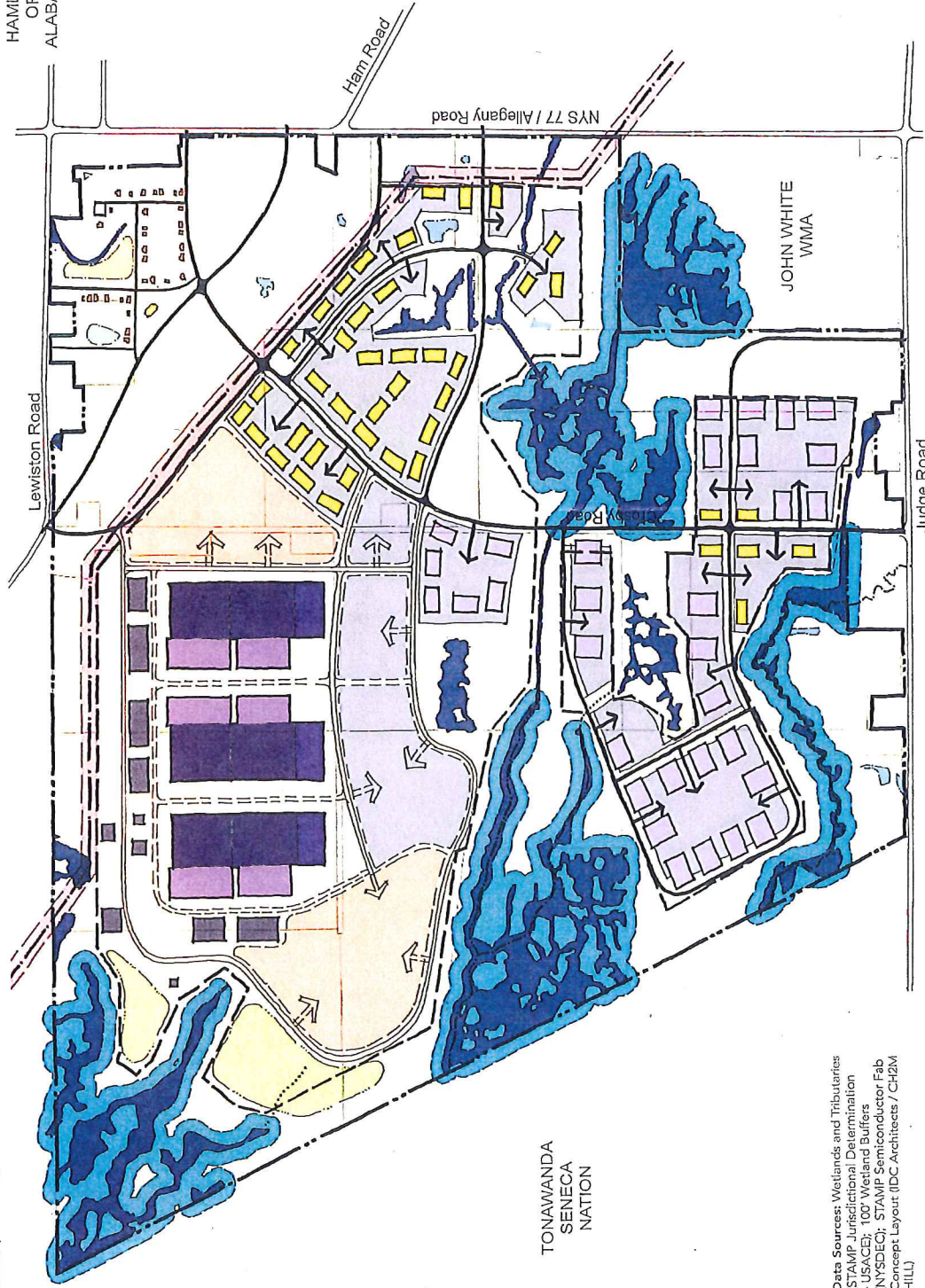
**FIGURE 5-22**

WNY STAMP  
DA Processing No. 2010-00964  
Genesee County, New York  
Quad: Akron  
Sheet 13 of 20





HAMLET  
OF  
ALABAMA



**LEGEND**

- STAMP Project Boundary
- Semiconductor Fab
- Semiconductor Office/Labs
- Semiconductor Gas/Chem & Support Space
- Semiconductor Cub/Water/Wastewater
- Semiconductor Fab Parking
- Semiconductor Craft Assembly Areas
- Tech Manufacturing Support/Flex
- Office
- Retail/Commercial
- Potential Town Hall
- Regulated Wetlands
- Isolated Wetlands
- 100' NYSDEC Buffer
- Stormwater Management
- 115KV Power Line
- On-Site Roads



TONAWANDA  
SENECA  
NATION

Data Sources: Wetlands and Tributaries  
(STAMP) Jurisdictional Determination  
- USACE; 100' Wetland Buffers  
(NYSDEC); STAMP Semiconductor Fab  
Concept Layout (IDC Architects / CH2M  
HILL)

**FIGURE  
5-23**

**On-site Alternative - C - 1**

WNY STAMP – USACE/NYSDEC Joint Permit Application, 2013  
Town of Alabama, Genesee County, NY



CONSERVATION CONNECTS, LLC  
PO Box 358, Alexander, NY 14054  
Tel: 716-560-1768

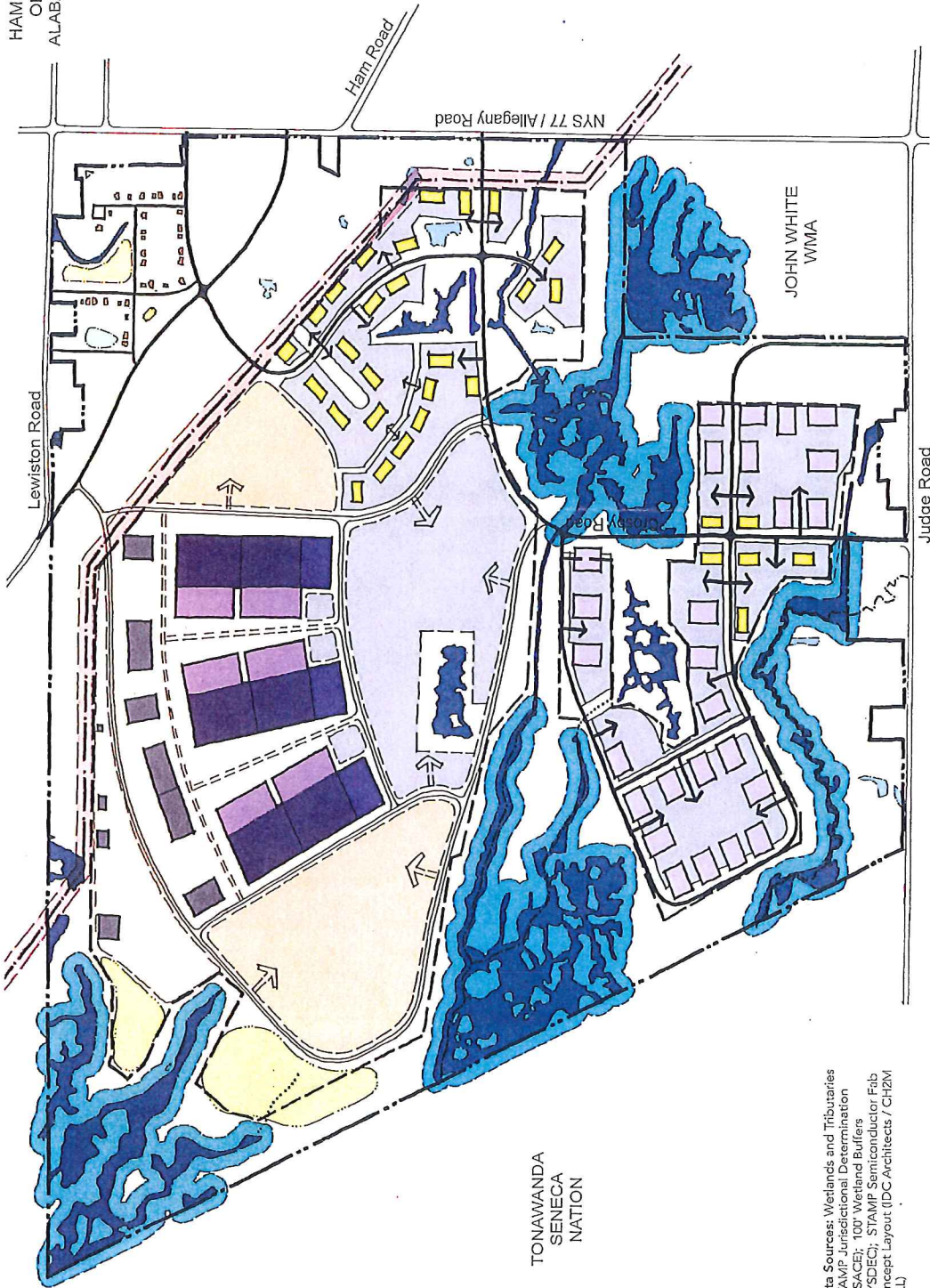


WNY STAMP  
DA Processing No. 2010-00964  
Genesee County, New York  
Quad: Akron  
Sheet 14 of 20





HAMLET OF ALABAMA

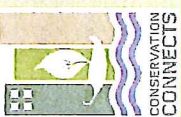


- LEGEND**
- STAMP Project Boundary
  - Semiconductor Fab
  - Semiconductor Office/Labs
  - Semiconductor Gas/Chem & Support Space
  - Semiconductor Cub/Water/Wastewater
  - Semiconductor Fab Parking
  - Semiconductor Craft Assembly Areas
  - Tech Manufacturing Support/Flex
  - Office
  - Retail/Commercial
  - Potential Town Hall
  - Regulated Wetlands
  - Isolated Wetlands
  - 100' NYSDEC Buffer
  - Stormwater Management
  - 115kV Power Line
  - On-Site Roads



TONAWANDA SENECA NATION

Data Sources: Wetlands and Tributaries (STAMP Jurisdictional Determination - USACE); 100' Wetland Buffers (NYSDEC); STAMP Semiconductor Fab Concept Layout (IDC Architects / CH2M HILL)



CONSERVATION CONNECTS, LLC  
PO Box 358, Alexander, NY 14054  
Tel: 716-560-1768



**On-site Alternative - C - 2**

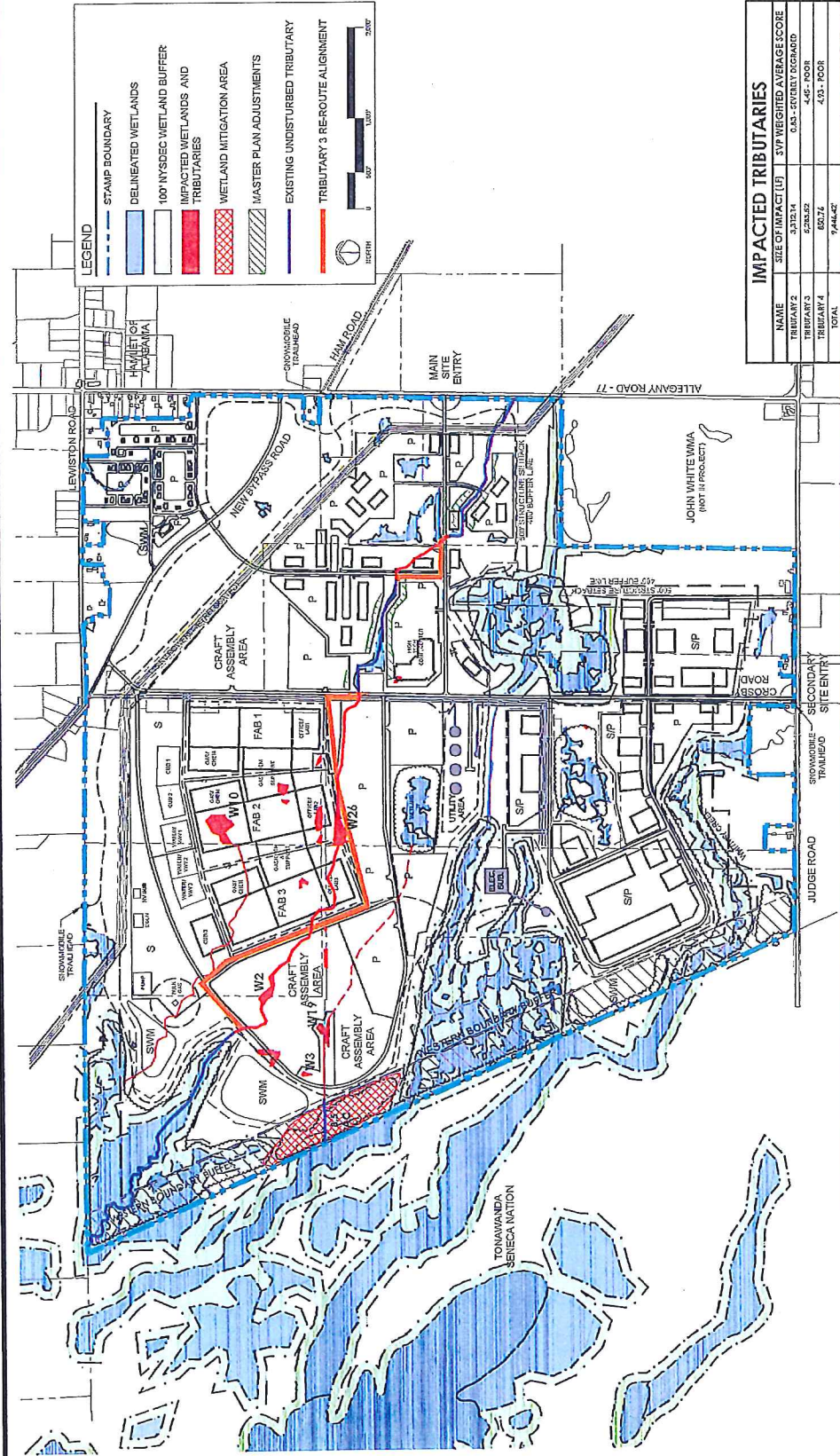
WNY STAMP – USACE/NYSDEC Joint Permit Application, 2013  
Town of Alabama, Genesee County, NY

**FIGURE 5-24**

WNY STAMP  
DA Processing No. 2010-00964  
Genesee County, New York  
Quad: Akron  
Sheet 15 of 20





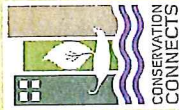


### Tributary 3 Reroute Alternative – Option 1

WNY STAMP RAI Response – December 2014  
 Town of Alabama, Genesee County, NY



**CLARK PATTERSON LEE**  
 DESIGN PROFESSIONALS  
 205 ST. PAUL STREET, SUITE 500  
 ROCHESTER, NEW YORK 14601  
 TEL: (800) 274-8000  
 FAX: (585) 237-5858  
 www.clarkpatterson.com



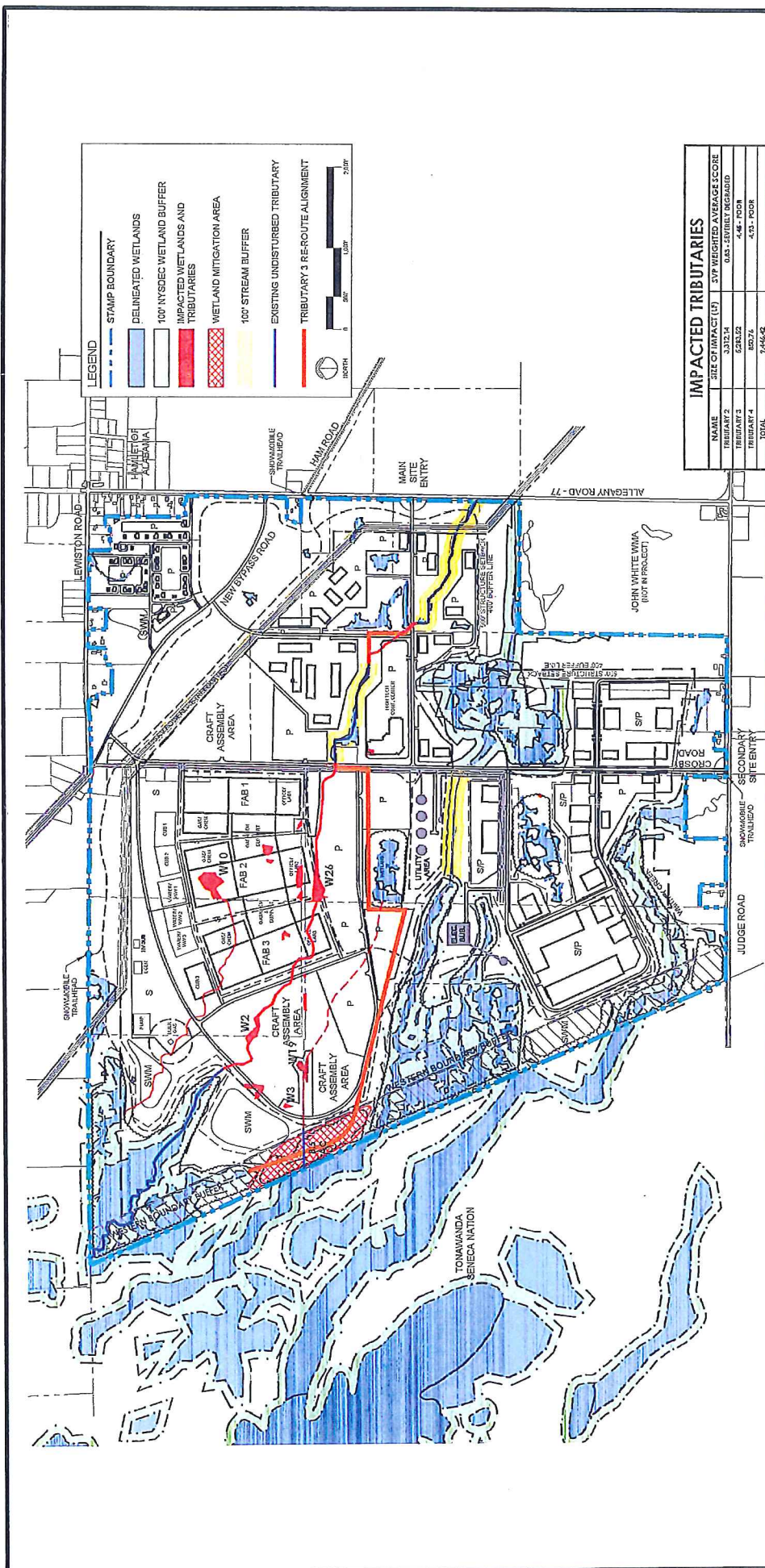
**CONSERVATION CONNECTS, LLC**  
 PO Box 358, Alexander, NY 14054  
 Tel: 716-560-1768  
 www.conservationconnects.com

**FIGURE 6**

WNY STAMP  
 DA Processing No. 2010-00964  
 Genesee County, New York  
 Quad: Akron  
 Sheet 16 of 20







IMPACTED TRIBUTARIES	
NAME	SIZE OF IMPACT (LF)
TRIBUTARY 2	3,372.14
TRIBUTARY 3	5,245.23
TRIBUTARY 4	820.76
TOTAL	9,438.13

### Tributary 3 Reroute Alternative – Option 2

**FIGURE 7**

WNY STAMP RAI Response – December 2014  
 Town of Alabama, Genesee County, NY

**CLARK PATTERSON**  
 DESIGN PROFESSIONALS  
 205 STATE STREET SUITE 200  
 ROCHESTER, NY 14609  
 TEL: (716) 243-5900  
 FAX: (716) 243-5930  
 WWW.CPDP.COM



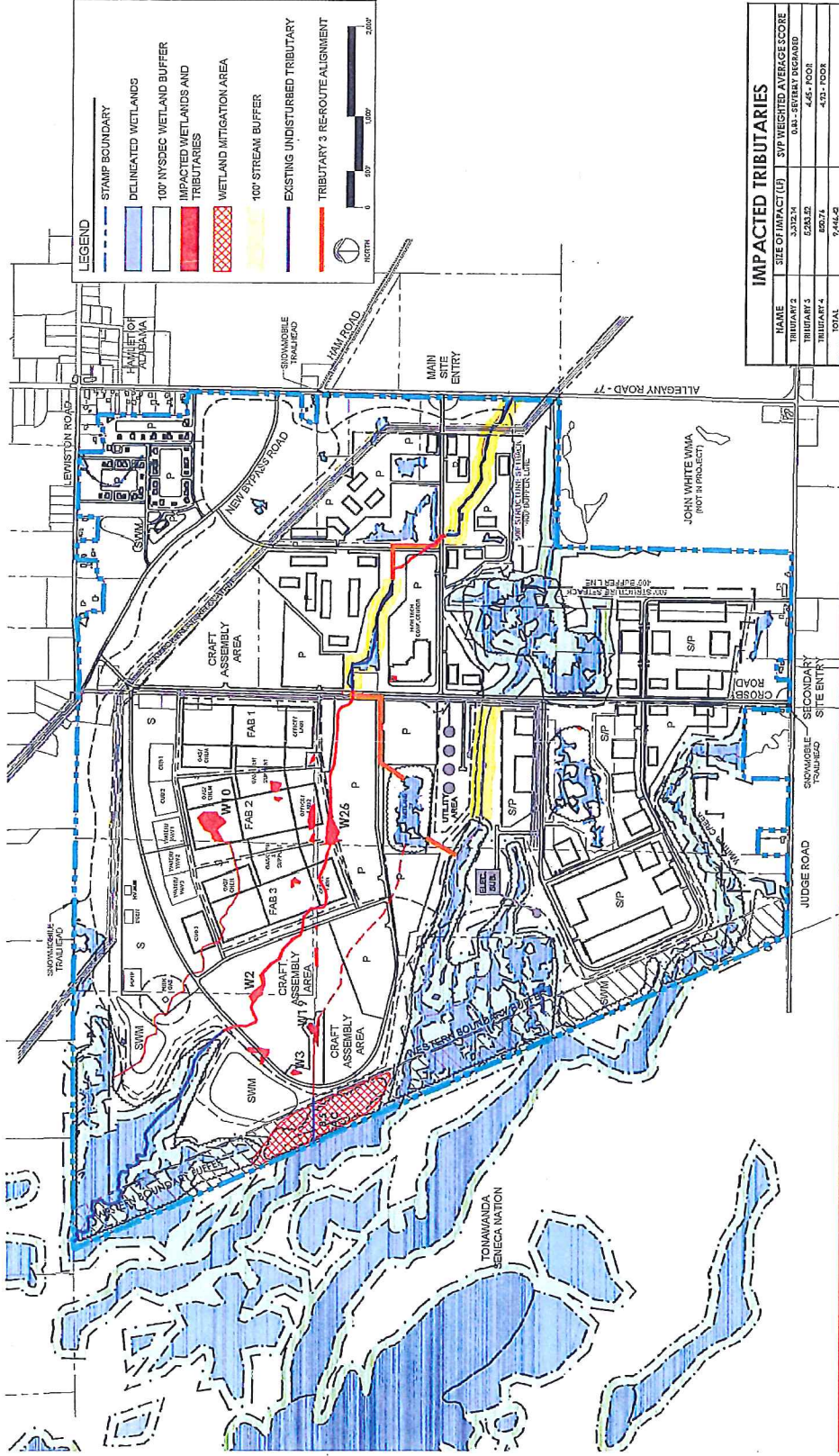
**CONSERVATION CONNECTS, LLC**  
 PO Box 358, Alexander, NY 14054  
 Tel: 716-560-1768  
 www.conservationconnects.com



WNY STAMP  
 DA Processing No. 2010-00964  
 Genesee County, New York  
 Quad: Akron  
 Sheet 17 of 20







**Tributary 3 Reroute Alternative - Option 3**

CONSERVATION CONNECTS, LLC  
 PO Box 358, Alexander, NY 14054  
 Tel: 716-560-1768  
 www.conservationconnects.com



CLARK PATTERSON  
 DESIGN PROFESSIONALS  
 200 EAST FAULKNER STREET, SUITE 300  
 ROCHESTER, NEW YORK 14604  
 TEL: (585) 232-5300  
 FAX: (585) 232-5335  
 www.clarkpatterson.com

WNY STAMP RAI Response - December 2014  
 Town of Alabama, Genesee County, NY

**FIGURE 8**

WNY STAMP  
 DA Processing No. 2010-00964  
 Genesee County, New York  
 Quad: Akron  
 Sheet 18 of 20











Poorly maintained culvert



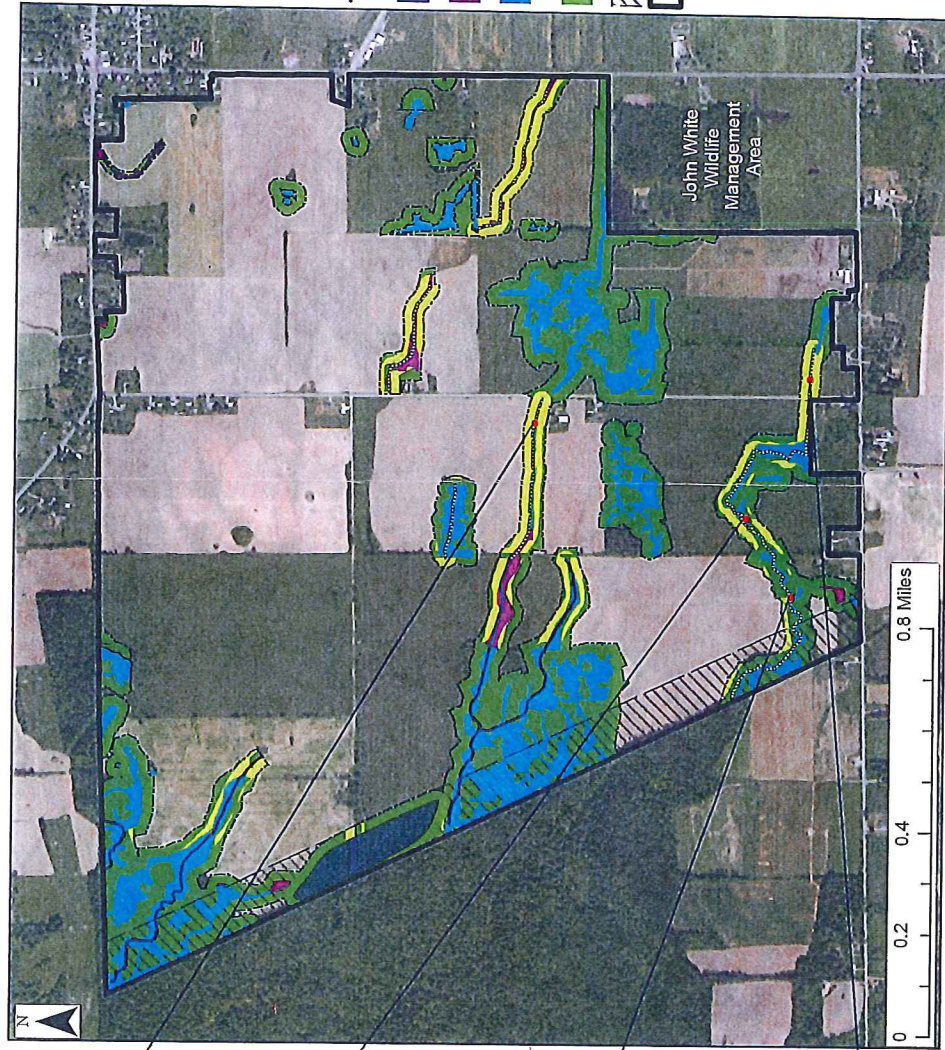
Bank erosion



Barrier to aquatic movement

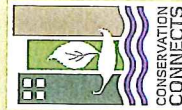


Unbuffered tributary channel



**Legend**

- Photo Location Points
- Total Mitigation Area = 323.96 Acres
- Enhanced Streams = 14,189.76 Linear Feet
- Enhanced Stream Buffer (Currently Unforested) = 41.1 Acres
- Protected Streams = 27,099.95 Linear Feet
- Wetland Restoration Area = 8.50 Acres
- Enhanced Wetlands = 15.00 Acres
- Protected Wetlands = 101.06 Acres
- Protected Upland Buffer = 214.40 Acres
- Western Buffer
- STAMP Boundary



CONSERVATION CONNECTS, LLC  
 PO Box 358, Alexander, NY 14054  
 Tel: 716-560-1768  
 www.conservationconnects.com

**Revised Conceptual Mitigation Plan**

WNY STAMP RAI Response – December 2014  
 Town of Alabama, Genesee County, NY

**FIGURE 10**

WNY STAMP  
 DA Processing No. 2010-00964  
 Genesee County, New York  
 Quad: Akron  
 Sheet 20 of 20

