

SPACE AND NAVAL WARFARE SYSTEMS COMMAND

VISITORS GUIDE



**Rapidly delivering cyber warfighting
capability from seabed to space**

Statement A: Approved for public release, distribution is unlimited.

ABOUT SPAWAR

SPAWAR



SPAWAR Front Office
619-524-7000

Welcome to SPAWAR, the U.S. Navy's technical authority for information technology systems.

We look forward to your visit to our San Diego headquarters, located on the Old Town Complex of Naval Base Point Loma. Getting to and on the Old Town Complex can be tricky. This guide will make your visit easier by providing information about directions, parking, base access, contact numbers and nearby amenities. We aim to provide you with comprehensive details. However, make sure you follow any specific instructions you've received from your SPAWAR contacts about your trip here.

Mission

SPAWAR develops, delivers and sustains advanced cyber capabilities for our warfighters. SPAWAR, along with its system centers, space field activity and its partnership with three program executive offices, provides the hardware and software needed to execute Navy missions. With nearly 10,000 active duty military and civilian professionals located around the world and close to the fleet, SPAWAR is at the forefront of research, engineering and acquisition, keeping our forces connected around the globe.

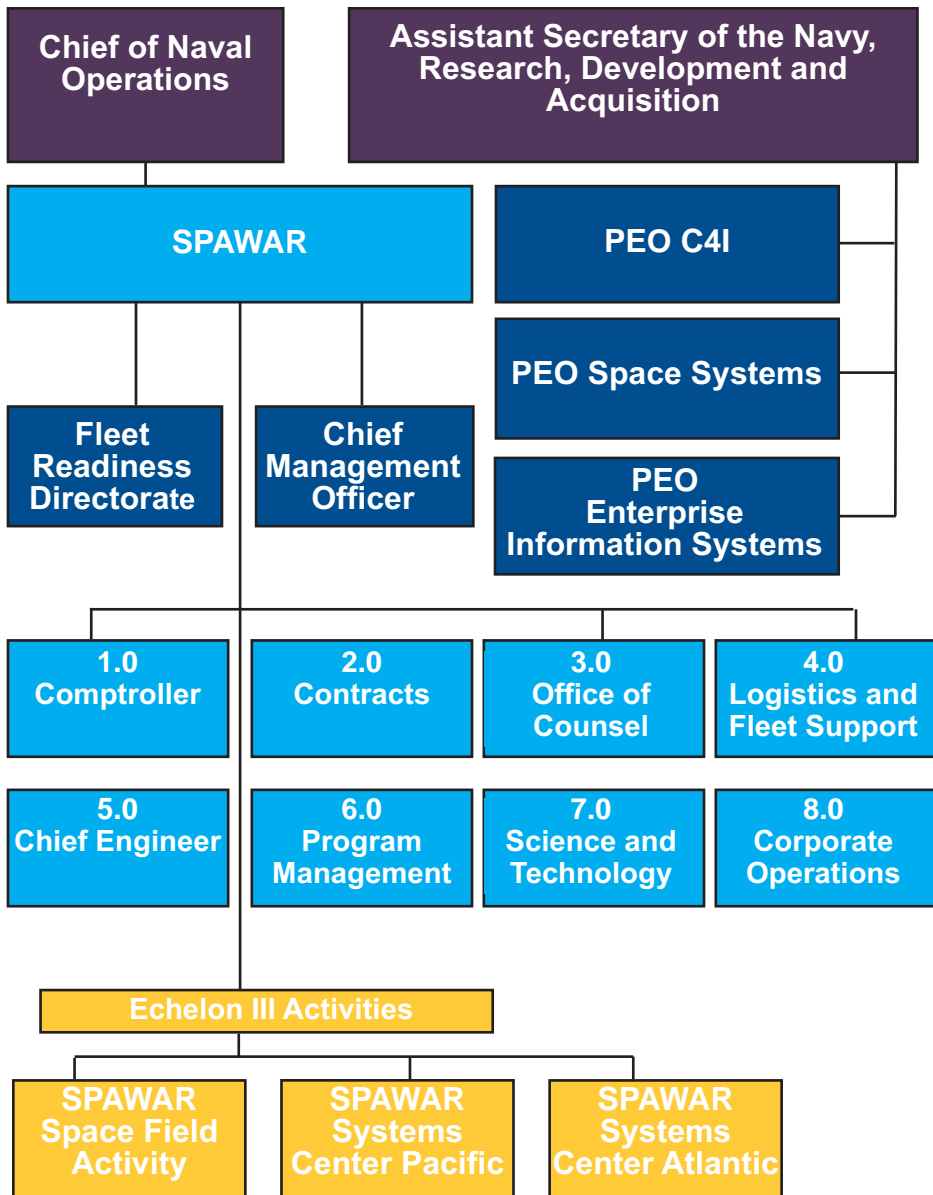
Vision

SPAWAR's vision is to rapidly deliver cyber warfighting capability from seabed to space.

ORG CHART



SPAWAR Organization



SPAWAR CONTACTS



SPAWAR is a competency aligned organization.

Our major competencies are:

Financial
619-524-7077

Contracts
619-524-7014

Legal
619-524-7057

Logistics and Fleet Support
858-537-0517

Engineering
858-537-0383

Acquisition and Program Management
619-221-7302

Science and Technology
619-553-3500

Corporate Operations
858-537-8506

PROGRAM CONTACTS



**PEO C4I Front Office;
619-524-7358**

PEO C4I and its partner program offices are located on the SPAWAR Old Town Complex. Contact information is provided for your convenience.

Battlespace Awareness and Information Operations Program Office
(PMW 120) 619-524-7373

Information Assurance and Cyber Security Program Office
(PMW 130) 858-537-0264

Navy Communications Satellite Program Office (PMW 146)
and PEO Space Systems
619-524-7756

Command and Control Program Office
(PMW 150) 858-537-0264

Tactical Networks Program Office
(PMW 160) 619-524-7907

Communications and GPS Navigation Program Office
(PMW/A 170) 619-524-7930

International C4I Integration Program Office
(PMW 740) 619-524-7789

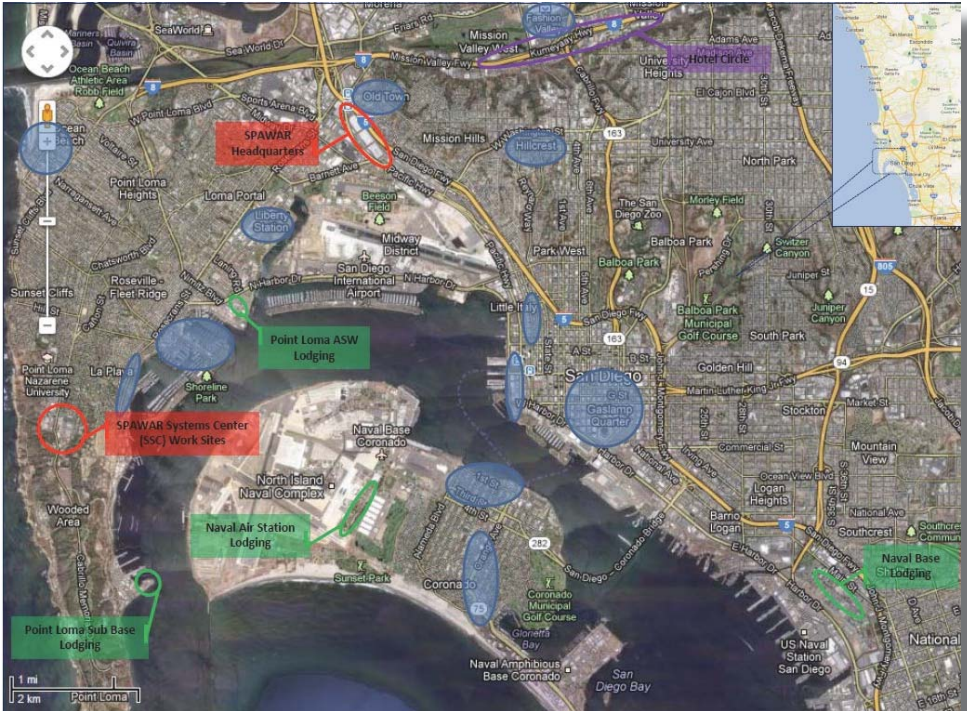
Carrier and Air Integration Program Office
(PMW 750) 619-524-7436

Ship Integration Program Office
(PMW 760) 619-524-7264

Undersea Integration Program Office
(PMW 770) 619-524-7908

Shore and Expeditionary Integration Program Office
(PMW 790) 858-537-0274

WELCOME TO SAN DIEGO



SPAWAR headquarters
and SSC Pacific



Dining & Entertainment



Navy Gateway Inns and
Suites



Hotel Circle
Suites

WELCOME TO SAN DIEGO Cont.

San Diego offers a variety of recreation options. Blue ovals on this map identify popular areas with high concentrations of dining and entertainment choices.

Four Navy Gateway Inns and Suites locations are highlighted in green. Additionally, the Marine Corps Recruiting Depot is located just .5 mile from Old Town Complex and features recreation and fitness centers, shopping and dining.



Navy Lodge, North Island Naval Air Station

DIRECTIONS

**SPAWAR Old Town Complex
4301 Pacific Highway,
San Diego 92110**

FROM San Diego International Airport (Lindbergh Field): Out of the airport go east on Harbor Drive (follow signs for I-5/Downtown) for .5 miles. Turn left onto W Laurel St., then left onto Pacific Highway. Follow Pacific Highway for approximately 3 miles. Old Town Complex is on your right. To get to the West Parking Area, turn left onto Enterprise Street. (just before the pedestrian bridge). The entrance to the West Parking lot is on the right, past Anderson's Nursery.

FROM East County or Inland North County:

Using Interstate 8 westbound, take Interstate 5 south and exit Old Town Avenue. At stop sign, continue straight along Frontage Road to first right (Witherby Street), one block past stop sign. Cross under the train tracks and turn right on first ramp to Pacific Highway. Old Town Complex will be on your right. To get to the West Parking Area, turn left onto Enterprise Street. (just before the pedestrian bridge). The entrance to the West Parking Area is on the right, past Anderson's Nursery.

FROM South San Diego County:

Using Interstate 5 northbound, exit Pacific Highway. Follow Pacific Highway, then turn left onto Enterprise St. (just before the pedestrian bridge) to get to the West Parking Area. The entrance to the West Parking Area is on the right, past Anderson's Nursery.

FROM Coastal North County:

Using Interstate 5 south, go past Interstate 8 and exit Old Town Avenue. At stop sign, continue straight along Frontage Road to first right (Witherby Street), one block past stop sign. Cross under the train tracks and turn right on first ramp to Pacific Highway. Old Town Complex will be on your right. To get to the West Parking Area, turn left onto Enterprise (just before the pedestrian bridge). The entrance to the West Parking Area is on the right, past Anderson's Nursery.

BASE ACCESS

ALL VISITORS TO THE SPAWAR OLD TOWN COMPLEX MUST HAVE A VALID GOVERNMENT ID. IF YOU DO NOT HAVE A DOD-ISSUED ID THEN YOU MUST BE ESCORTED ONTO AND AROUND THE FACILITY BY A GOVERNMENT EMPLOYEE.

****CONTRACTORS ARE NOT ALLOWED TO ESCORT VISITORS****

Once across Pacific Highway you can use your valid CAC or military ID card (active, reserve, retired or dependent) to enter Old Town Complex through one of the three turnstiles located at the perimeter gate to the left of the vehicle entrance. The scanner is operated by swiping the bar code on the back of your government CAC or military ID card or by pressing the front of your CAC against the scanner so it can read the RFID chip.



Swipe this bar code or...

Press RFID chip against scanner body

If your CAC or military ID card fails to activate the turnstile, carefully cross in front of the main gate entrance to the opposite sidewalk using the cross-walk and navigate through the black, fenced area. When you are through the fence, present your ID to the gate guard.

HANDICAP PARKING



Handicap parking is available at locations around the complex.

PARKING & ENTRY

Parking within the Old Town Complex is very limited. Visitors should park in the West Parking Area, then walk across the pedestrian over-pass or crosswalk to gain entry to the complex. Make sure to lock your vehicle because the lot is open access.

The entrance to the West Parking Area is located on Enterprise Street and two-hour parking is available on Enterprise Street outside the parking lot.

If the West Parking Area is full, the North Lot offers another option. It is located on Sports Arena Boulevard. Look for the group of parking spots enclosed by a metal fence with a gate on your left if heading north. After parking, turn right out of the gate and walk up Sports Arena Boulevard until you come to Pacific Highway. Cross at the light or over the pedestrian bridge to reach the turnstiles that access Old Town Complex.

SPAWAR offices are located within multiple buildings on the SPAWAR Old Town Complex. Below is a key to help you locate our buildings and meeting spaces.



West and North Parking Lots



Pedestrian Bridge



OT1

PEO C4I and Program Offices



OT2

SPAWAR Offices



OT3

Miller Commons All Hands Area
Corporate Operations
Chief Engineer
Cantrell C Conference Room



OT4

Headquarters Offices
Wagner Mic Front Office Conference Room
Fleet Readiness Directorate



OT27

Office of Small Business Programs
Gym



OT28

SPAWAR Facilities
PEO Space Systems

PARKING & ENTRY Cont.



LODGING

A - MISSION VALLEY

- SHERATON MISSION VALLEY SAN DIEGO HOTEL (619) 260-0111
Discount code 361852 under SET/Corporate Account when booking
- MARRIOTT RESIDENCE INN (619) 881-3600
- CROWNE PLAZA HANAIEI HOTEL (619) 297-1101
- DOUBLETREE HOTEL (619) 297-5466
- MISSION VALLEY MARRIOTT (619) 692-3800
- DOUBLETREE CLUB (619) 881-6900

B - OLD TOWN

- COURTYARD BY MARRIOTT (619) 260-8500
- HOLIDAY EXPRESS (619) 299-7400
- HACIENDA HOTEL, BEST WESTERN (619) 298-4707
- HAMPTON INN AIRPORT/SEAWORLD (619) 299-6633

C - WATERFRONT

- EMBASSY SUITES HOTEL (619) 239-2400
- HOLIDAY INN ON THE BAY (619) 232-3861
- HOLIDAY INN, BAYSIDE (619) 224-3621

D - SHELTER ISLAND

- BAY CLUB HOTEL & MARINA (619) 224-8888
- HUMPHREY'S HALF MOON INN & SUITES (619) 224-3411
- KONA KAI RESORT AND SPA (619) 221-8000
- BEST WESTERN ISLAND PALMS HOTEL (619) 222-0561

E - HARBOR ISLAND

- HILTON ON HARBOR ISLAND (619) 291-6700

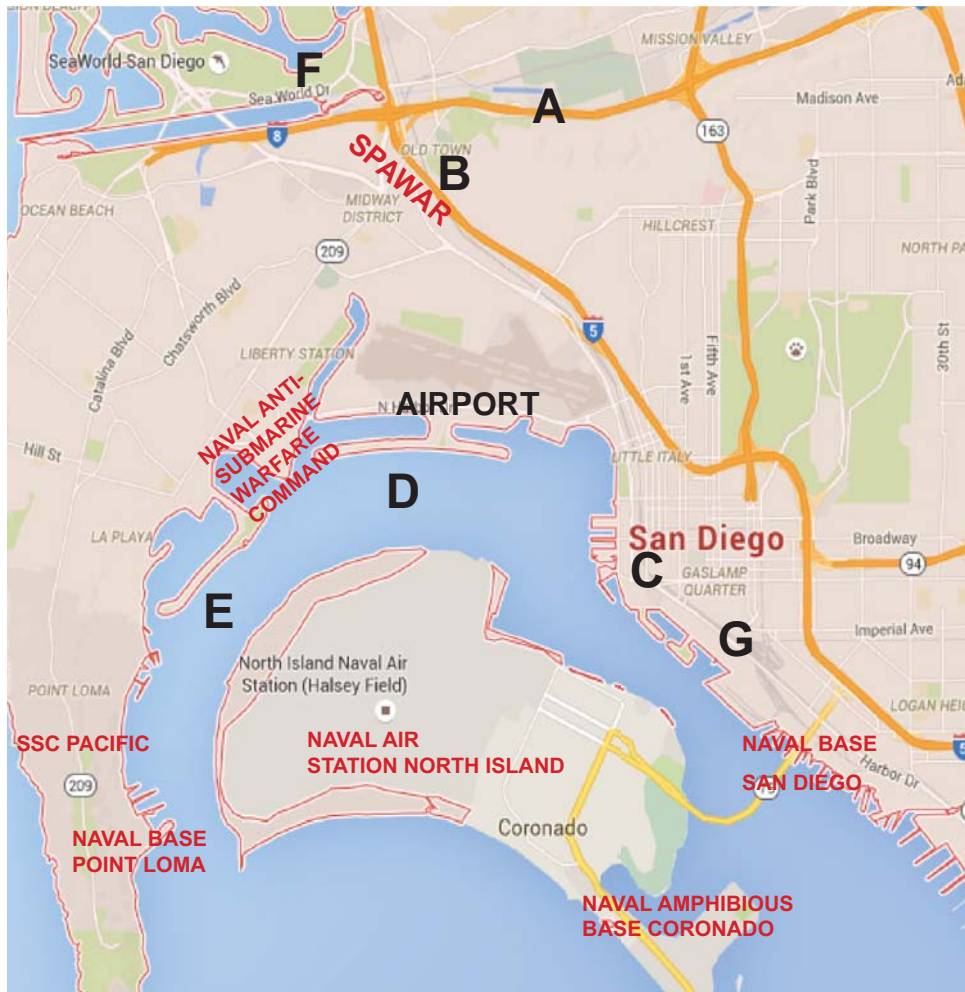
F - MISSION BAY

- BAHIA RESORT HOTEL (858) 488-0551
- HYATT ISLANDIA (619) 224-1234
- SAN DIEGO PARADISE POINTE (858) 274-4630

G - DOWNTOWN SAN DIEGO

- MARRIOTT COURTYARD (619) 446-3000
- HORTON GRAND (619) 544-1886
- THE WESTIN EMERALD PLAZA HOTEL (619) 239-4500
- U.S. GRANT HOTEL (866) 837-4270

LODGING MAP

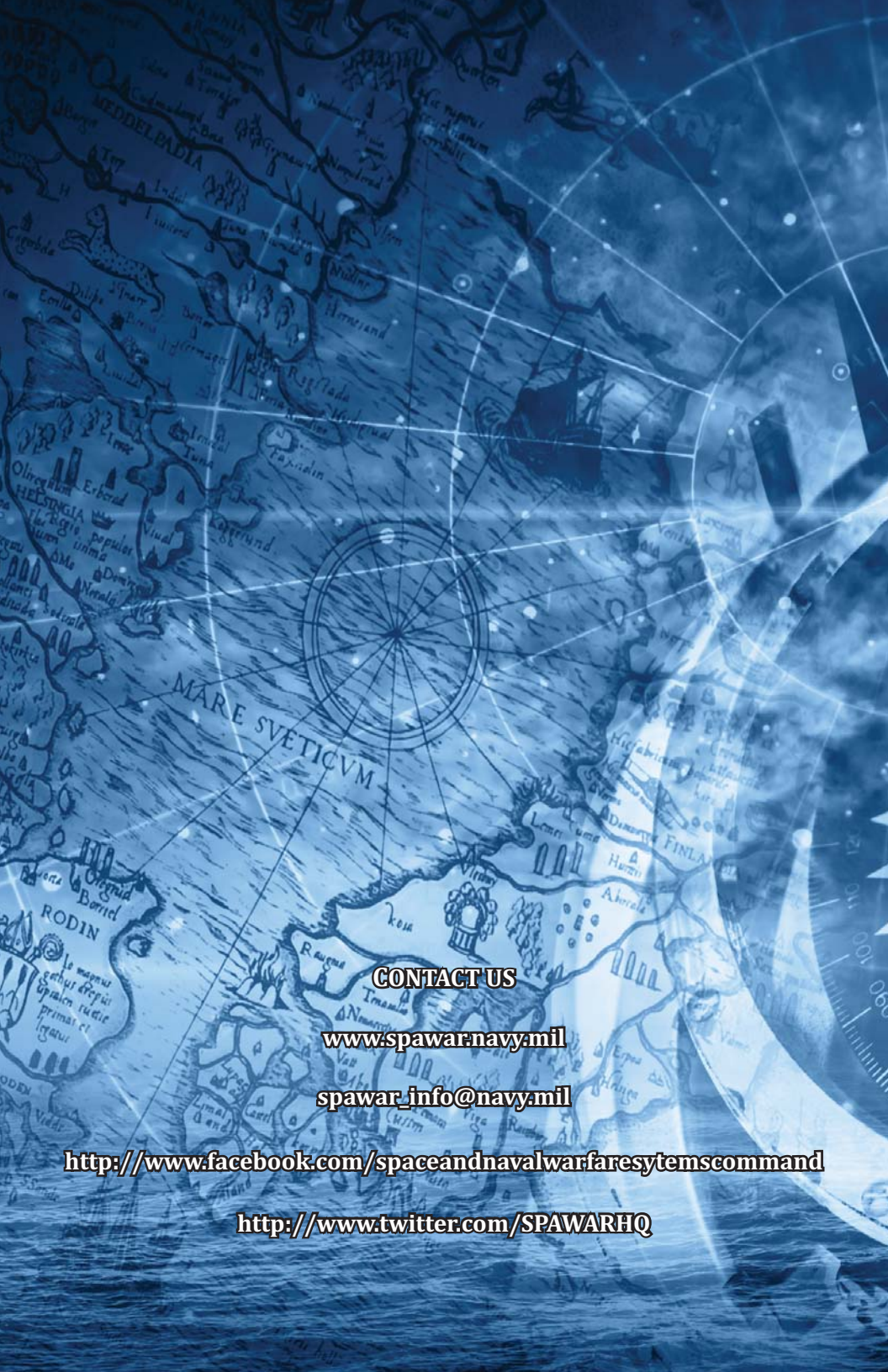


Disclaimer: Lodging recommendations are not endorsements.

Printing Hint: Set to print in booklet form.

For additional information on lodging, food, activities and transportation around San Diego, visit the San Diego Convention Center Website

www.visitsandiego.com



CONTACT US

www.spawar.navy.mil

spawar_info@navy.mil

<http://www.facebook.com/spaceandnavalwarfaresystemscommand>

<http://www.twitter.com/SPAWARHQ>