



VALUE TO THE NATION

US ARMY CORPS OF ENGINEERS ★ MISSISSIPPI VALLEY DIVISION ★ BUILDING STRONG®

INTRODUCTION

As the U.S. Army Corps of Engineers has done for more than 200 years, the civil works program continues to provide value to the nation by delivering sustainable solutions to meet the water resource requirements.

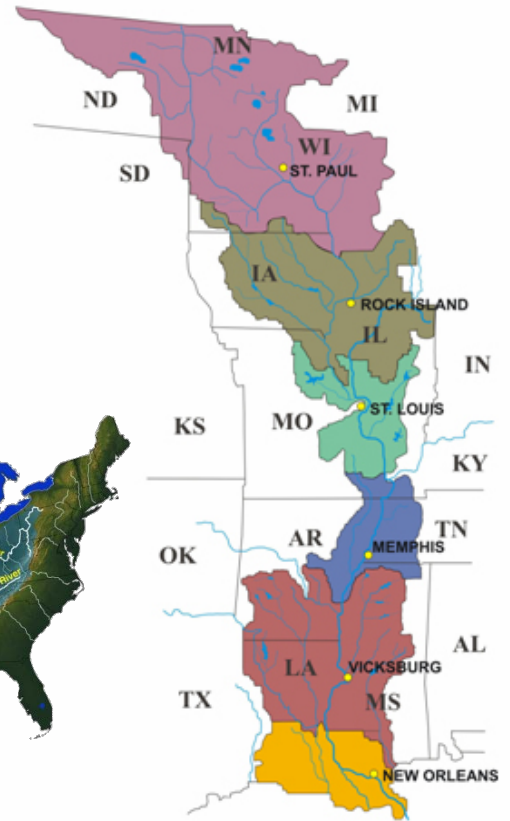
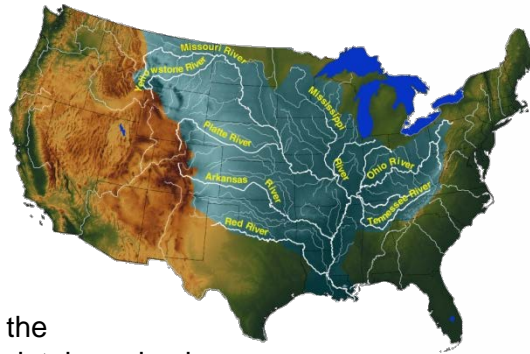
The Mississippi Valley Division is responsible for the Corps water resources programs within 370,000-square-miles of the Mississippi River Valley. The division boundary encompasses the entire Mississippi River from Lake Itasca, Minn., to the Gulf of Mexico, and includes all or parts of 12 states: Ken., Tenn., La., Miss., Ill., Mo., Ark., Iowa, Wisc., Minn., N.D and S.D.

The mission of the division is to serve the Mississippi Valley region by managing the watersheds and developing collaborative engineering solutions that will reduce risks through the reduction of flood damage potential, maintain and enhance navigation, and protect, restore and enhance environmental ecosystems; while being prepared to respond to regional and national emergencies.

250+ tributaries drain into the Mississippi River, the largest of which are the Ohio and Missouri rivers. The 1.25 million-square-mile Mississippi River drainage basin gathers water from 41 percent of the continental United States. This includes all or parts of 31 states and two Canadian provinces.

NAVIGATION

- 4,267 miles of commercial waterways
 - ▶ 11 Inland Waterway systems
 - ▶ 19 other waterway systems
 - ▶ 1/3 of U.S. inland waterways
 - ▶ Moves 47% of U.S. inland waterborne commerce
- 670 million tons of cargo move on the Mississippi River system each year
- Main Commodities: petroleum & petroleum products, crude materials, food & farm products, chemicals and related products, primary manufactured goods, and coal
- 7 deep-draft ports
- 51 shallow-draft ports



- \$5.6 billion in domestic transportation savings
- 62 locks:
 - ▶ 29 on the Mississippi River
 - ▶ 8 on the Illinois River
 - ▶ 6 on the Gulf Intracoastal Waterway, LA
 - ▶ 5 on the Red River, LA
 - ▶ 4 on the Ouachita & Black Rivers, AR & LA
 - ▶ 1 on the Kaskaskia River, IL
 - ▶ 1 at Old River, LA
 - ▶ 1 at Bayou Teche, LA
 - ▶ 3 in the Atchafalaya Basin, LA
 - ▶ 1 at Freshwater Bayou, LA
 - ▶ 3 on West Pear River, LA



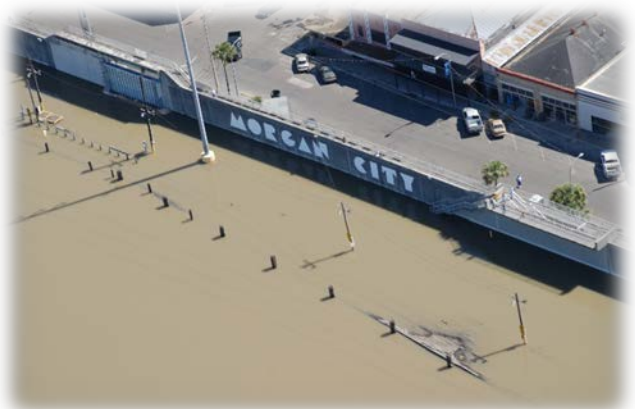
BUDGET AND MANPOWER

- Total Division-wide employees: 4,628 (4,582 civilians, 46 military)
- Division headquarters employees: 100
- FY 2016 Appropriations: \$1.1 billion
- FY 2017 President's Budget: \$828 million



FLOOD DAMAGE REDUCTION

- 36 flood control reservoirs:
 - ▶ 3 in Arkansas
 - ▶ 4 in Mississippi
 - ▶ 5 in Illinois
 - ▶ 2 in Missouri
 - ▶ 3 in Iowa
 - ▶ 2 in North Dakota
 - ▶ 3 in Louisiana
 - ▶ 1 in Wisconsin
 - ▶ 13 in Minnesota
- 59 pumping stations (MR&T)
- 400 drainage structures
- ~8,400 miles of levee (3,486 miles MR&T)
- 143 miles of foreshore protection (MS River)
- 700 miles of wing dams
- 1,144 miles of revetment (MS River)
- 326 miles of rock dikes (MS River)
- \$666 billion cumulative damages prevented (MR&T)
- \$234 billion damages prevented in 2011 (MR&T)



HYDROPOWER

- 4 Corps plants produce 226.5 MW of power:
 - ▶ Clarence Cannon Dam on the Salt River at Monroe City, Mo.
 - ▶ Narrows Dam on the Little Missouri River at Murfreesboro, Ark.
 - ▶ Blakely Mountain Dam on the Ouachita River near Mountain Pine, Ark.
 - ▶ DeGray Dam on the Caddo River near Arkadelphia, Ark.
- 8 non-federal plants (4 private, 4 municipal) at Corps dams on Mississippi & Illinois rivers provide 395 megawatts of power.



RECREATION

- 1.9 million acres
- 853 recreation areas
- 3,482 picnic sites
- 12,194 camping sites
- 240 playgrounds
- 103 swimming areas
- 230 number of trails
- 704 trail miles
- 17 fishing docks
- 422 boat ramps
- 9,212 marina slips
- 47 million visitors each year
- \$1.6 billion in visitor spending
- \$405 million in labor income
- \$690 million in value added (wages/salaries, payroll benefits, profits, rents, etc.)



ENVIRONMENTAL

In all aspects of natural and cultural resources management, the Corps promotes awareness of environmental values and adheres to sound environmental stewardship, protection, compliance and restoration practices. Environmental sustainability and watershed approaches are central to the ecosystem restoration mission of the Corps. Project impacts on the environment are identified and a sustainable balance of environmental, economic, social and engineering factors is sought.

The division houses the National Ecosystem Restoration Planning Center of Expertise. It provides services to the nation including environmental training, agency technical review, independent external peer review, environmental model certification, as well as supporting ecosystem research and development needs. Center resources include virtual team members from around the nation including Corps staff, non-government organizations, universities and other state and federal agencies.



EMERGENCY RESPONSE

2015/2016 Winter Flood

- Five of six MVD districts activated. More than 400 team members were engaged in flood response.
- \$4.9 million of Flood Control & Coastal Emergency funding was provided.
- Corps HQs, the Corps' Southwestern & Northwestern divisions, U.S. Coast Guard and the Louisiana Army National Guard provided support.
- Several tributary sites in the upper Mississippi River valley set stage records, while in the lower Mississippi River valley, the event was generally 7th or 8th highest on record.
- The Corps provided: 873,500 sand bags, 549 rolls of poly, 19 pumps and 15,975 lineal feet of HESCO bastion to local communities.
- The event required operation of the Bonnet Carré spillway. Opening January 10, 2016, and final closure February 1, 2016.
- First significant use of Unmanned Aerial Systems to capture imagery and document conditions of the event and the flood risk management system.
- "Boots on the Ground" social media campaign proactively reached out to the communities to provide information.



CONTACT INFORMATION




USACE
Mississippi Valley Division
P.O. Box 80
Vicksburg, MS 39181-0080
(601) 634-5757




USAED, St. Paul
Army Corps of Engineers Centre
190 Fifth Street East
St. Paul, MN 55101-1638
(651) 290-5200




USAED, Rock Island
Clock Tower Building
P.O. Box 2004
Rock Island, IL 61204
(309) 794-4200




USAED, St. Louis
1222 Spruce Street
St. Louis, MO 63103-2833
(314) 331-8002



USAED, Memphis
167 N. Main Street
Memphis, TN 38103-1894
(901) 544-3348



USAED, Vicksburg
4155 Clay Street
Vicksburg, MS 39183
(601) 631-5000



USAED, New Orleans
P.O. Box 60267
New Orleans LA 70160
(504) 865-1121

February 2016