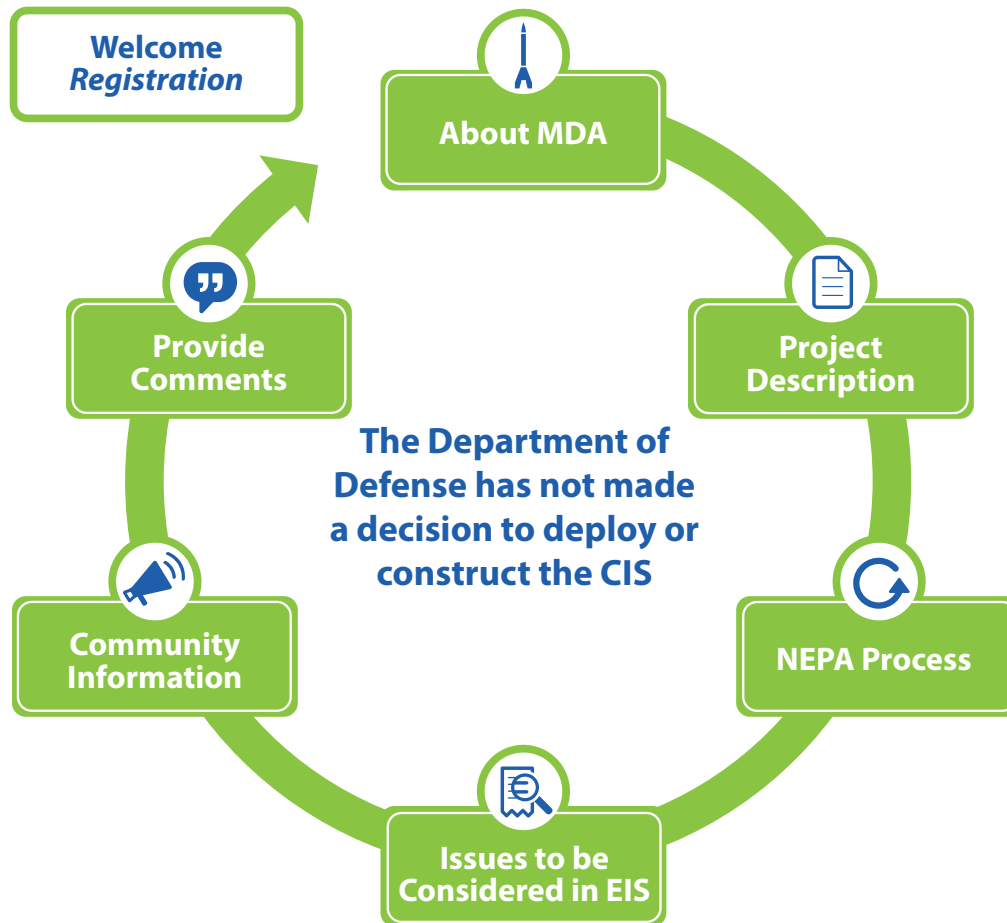




# Welcome to the MDA Public Meeting



**We invite the community to learn more about the proposed Continental United States (CONUS) Interceptor Site (CIS) and the Environmental Impact Statement (EIS).**

- Review project and proposed actions
- Ask questions and interact with subject-matter experts
- Provide valuable input
- Submit written comments or provide oral comments to a court recorder
- Sign up to receive additional information about the project

**Written comments may be submitted to:**

**Email:** MDA.CIS.EIS@BV.COM

**Fax:** (913) 458-1091

**Mail:** Black & Veatch Special Projects Corp  
ATTN: MDA CIS EIS  
6601 College Boulevard  
Overland Park, KS 66211-1504

**All comments must be postmarked by 15 Sept. 2014**



# Cooperating Agencies



Fort Drum  
Fort Drum, NY



Center for Security Forces Detachment  
Kittery Survival, Evasion, Resistance,  
and Escape Facility (SERE East)  
Redington Township, ME



Fort Custer Training Center  
Michigan Army National Guard  
Augusta, MI



Camp Ravenna Joint Military Training Center  
Ohio Army National Guard  
Portage and Trumbull Counties, OH



# Why is MDA Preparing an EIS?

## **FY13 National Defense Authorization Act Section 227(b)**

(a) EVALUATION. Not later than December 31, 2013, the Secretary of Defense shall conduct a study to evaluate at least three possible additional locations in the United States, selected by the Director of the Missile Defense Agency, that would be best suited for future deployment of an interceptor capable of protecting the homeland against threats from nations such as North Korea and Iran. At least two of such locations shall be on the East Coast of the United States.

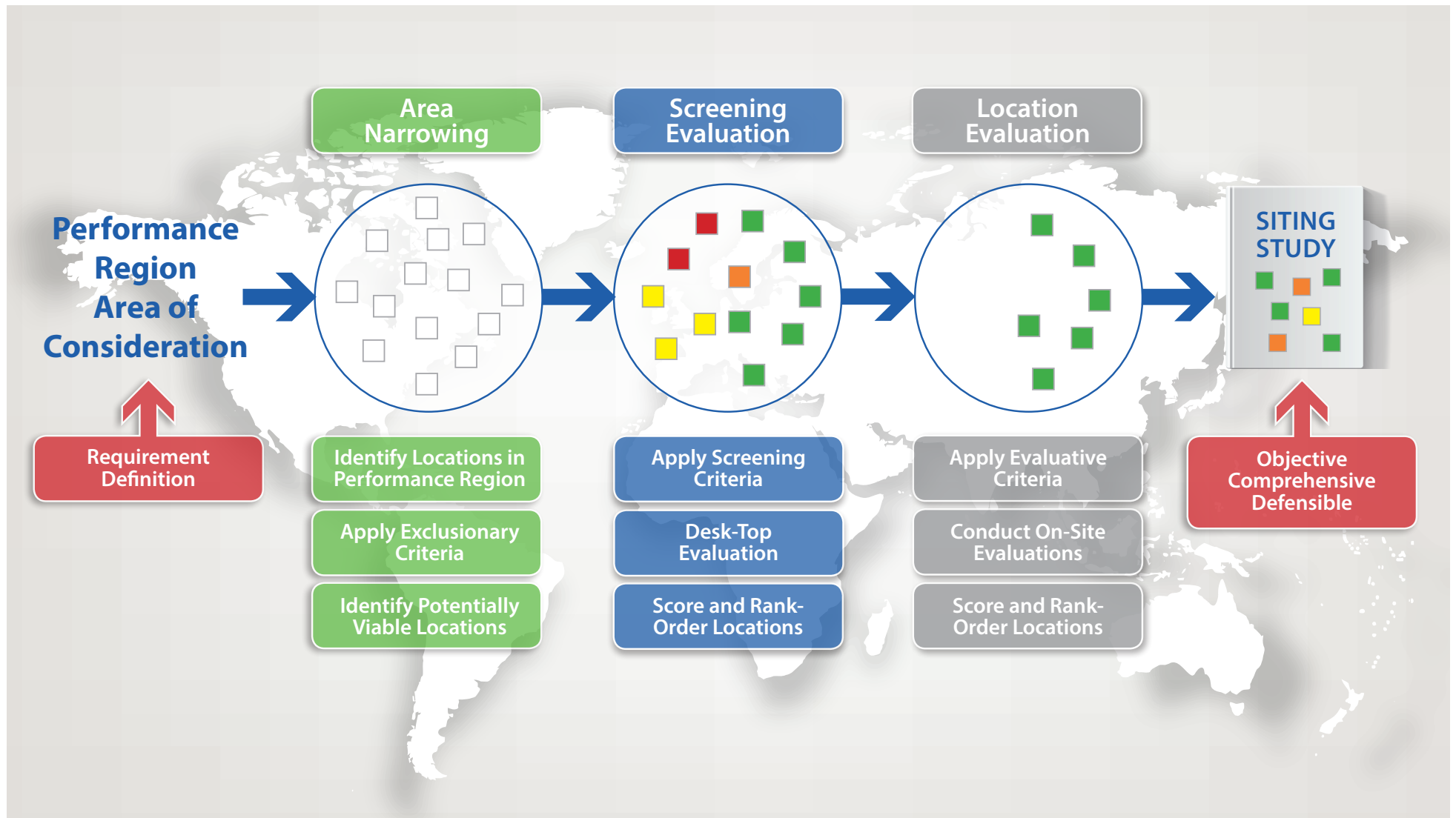
(b) ENVIRONMENTAL IMPACT STATEMENT REQUIRED. Except as provided by subsection (c), the Secretary shall prepare an environmental impact statement in accordance with the National Environmental Policy Act of 1969 (42 U.S.C. et seq.) for the locations the Secretary evaluates under subsection (a).

**Pursuant to Congressional direction to complete an Environmental Impact Statement (EIS) for a potential additional missile defense site in the continental United States, the Missile Defense Agency completed an extensive evaluation of sites announced by the Department of Defense in September, 2013.**

**The Department of Defense has not made a decision to deploy or construct the CIS.**

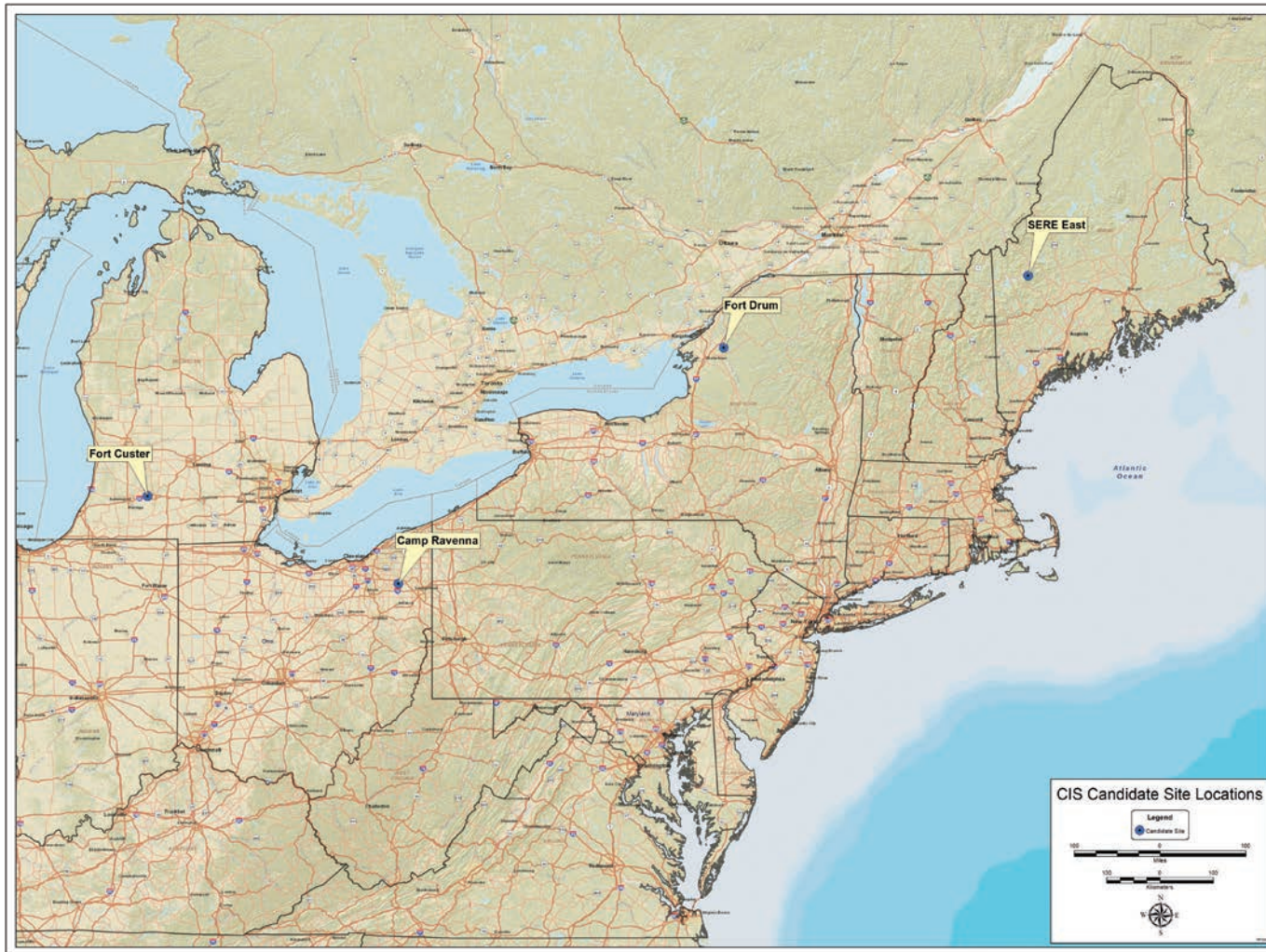


# MDA Siting Process





# Locations Under Consideration in EIS\*

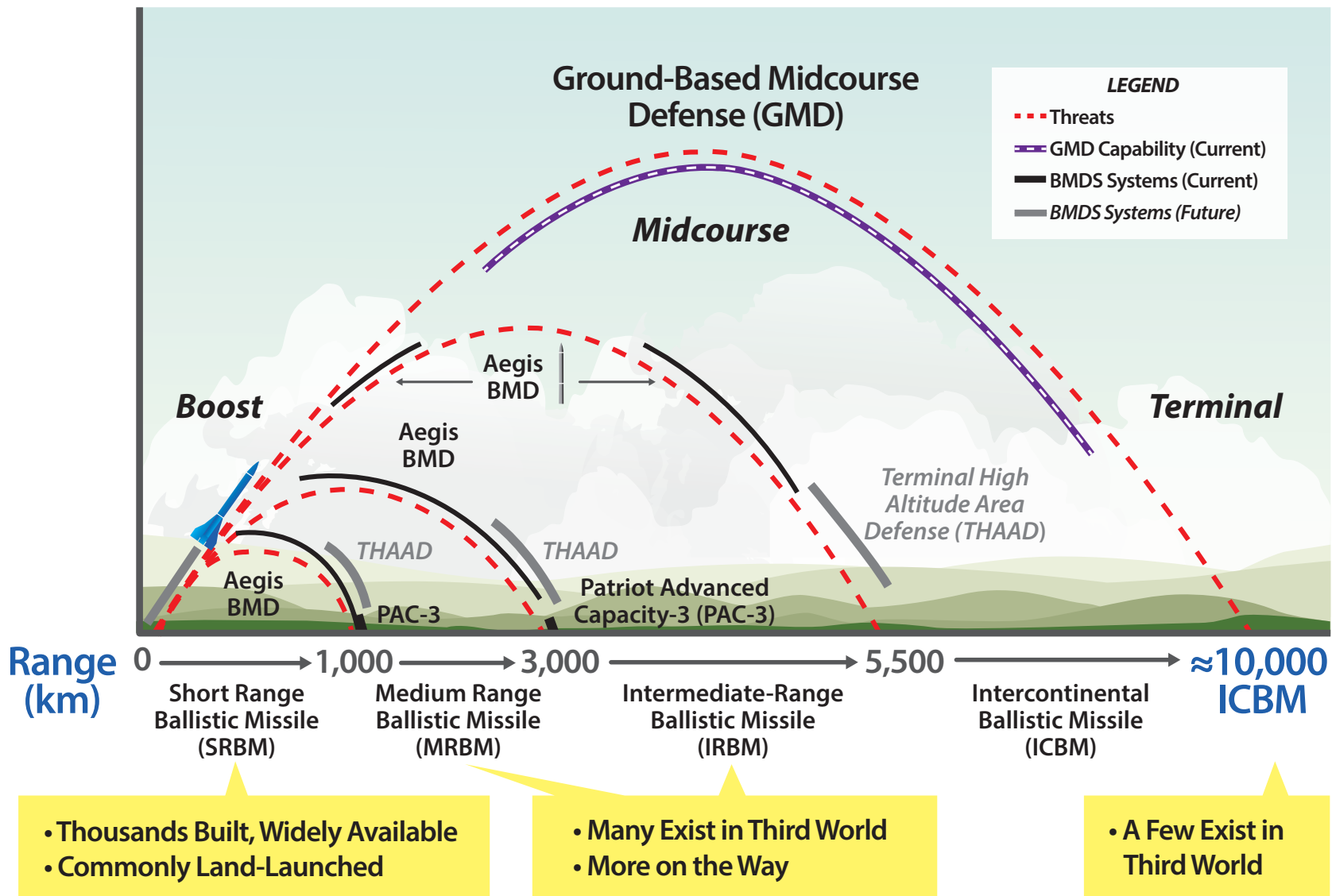


- Fort Custer Training Center (FCTC) – Michigan Army National Guard, Augusta, Michigan;
- Camp Ravenna Joint Military Training Center (CRJMTC) – Ohio Army National Guard, Portage and Trumbull Counties, Ohio;
- Fort Drum (FTD), Fort Drum, New York; and
- Center for Security Forces Detachment Kittery Survival, Evasion, Resistance, and Escape Facility (SERE East), Redington Township, ME

***\*No preferred site has been selected***

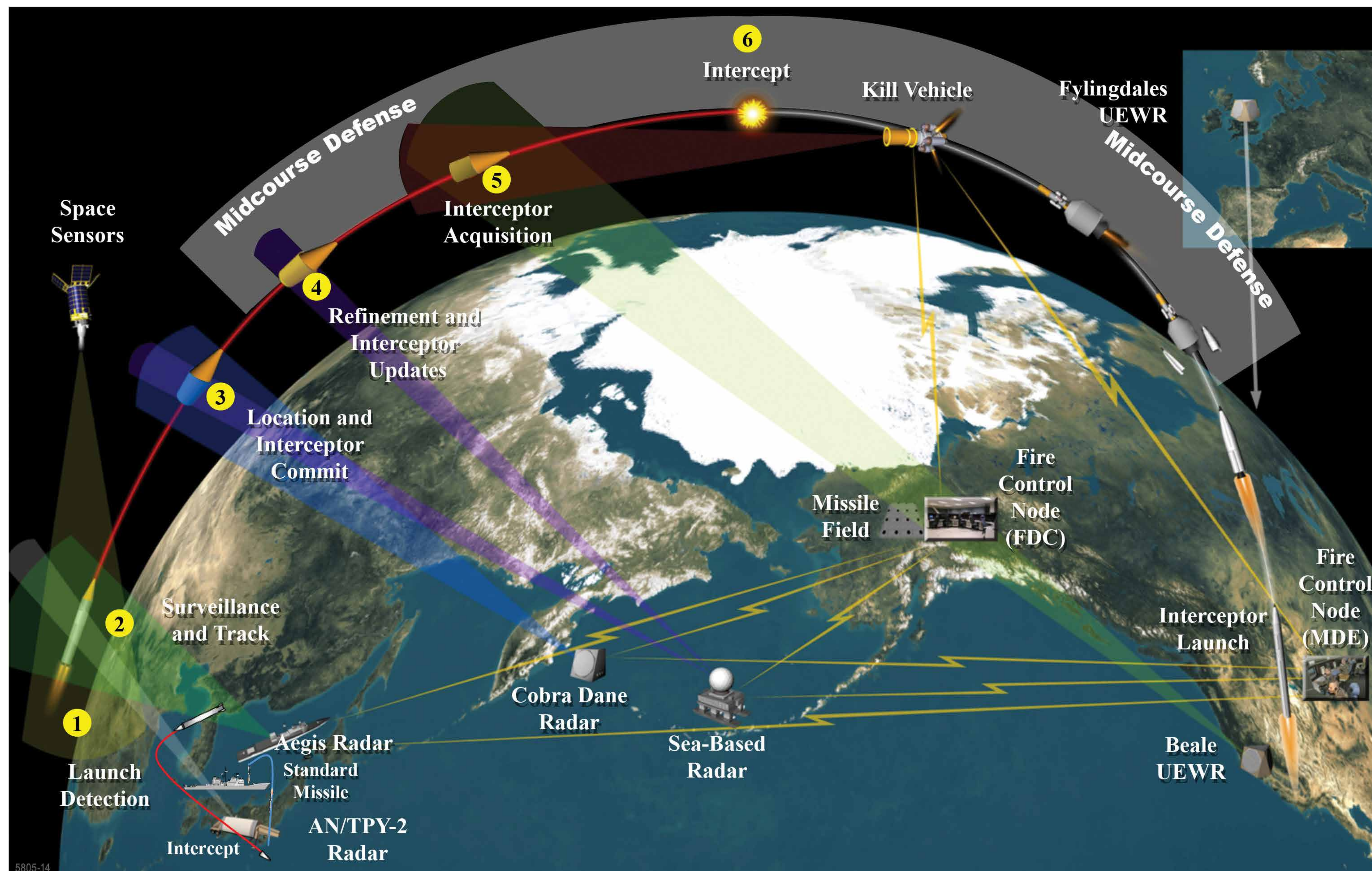


# Ballistic Missile Defense System





# How Missile Defense Works





# About Ground Based Interceptor (GBI)



## Ground-based Interceptor

- 55 feet long, 4.2 feet in diameter, 22-27 tons
- Solid propellant
- No explosive element (hit-to-kill)



Fort Greely, AK Missile Defense Site



Transporting GBI to Silo



Silo Interface Vault Transport



Silo Transport



Missile Transport



GBI Placement into Silo



Emplacement of Silo





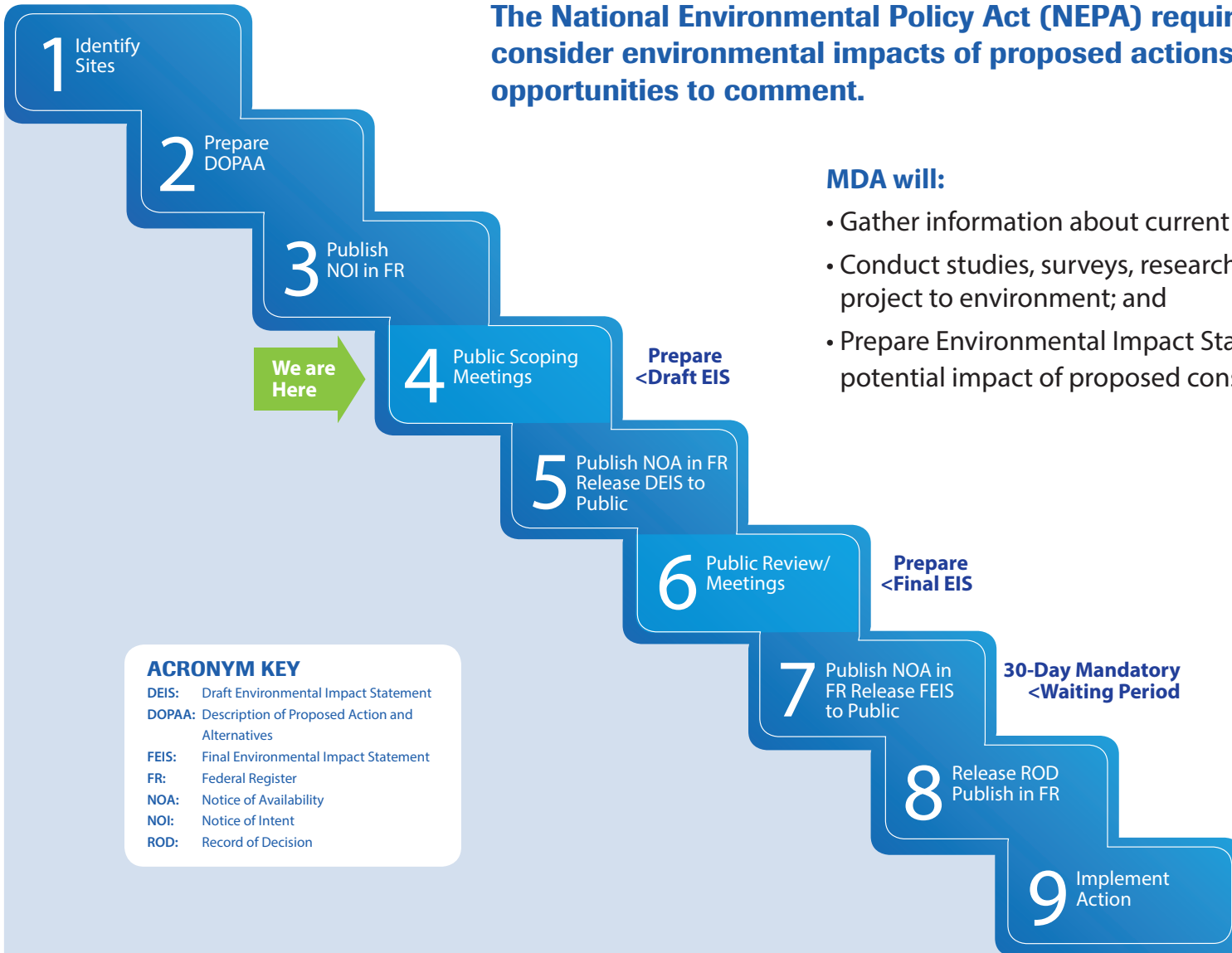
# Environmental Impact Statement Steps

The National Environmental Policy Act (NEPA) requires Federal agencies to consider environmental impacts of proposed actions and provide the public opportunities to comment.

**MDA will:**

- Gather information about current environmental quality;
- Conduct studies, surveys, research to analyze impacts of project to environment; and
- Prepare Environmental Impact Statement, detailing the potential impact of proposed construction and operations

MDA is aware of the importance of environmental resources and local cultural and archaeological resources; we will work to minimize the impact of construction.



**ACRONYM KEY**  
 DEIS: Draft Environmental Impact Statement  
 DOPAA: Description of Proposed Action and Alternatives  
 FEIS: Final Environmental Impact Statement  
 FR: Federal Register  
 NOA: Notice of Availability  
 NOI: Notice of Intent  
 ROD: Record of Decision



# Environmental Resources to be Analyzed

## Air Quality

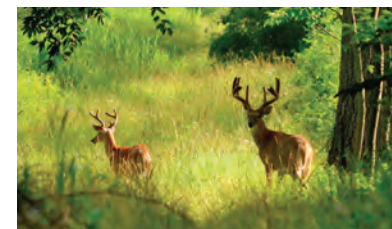
Construction  
Operational Emissions



## Cultural and Archaeological Resources



## Cumulative Impacts



## Water Quality

Surface Water  
Groundwater Aquifers



## Geology and Soils



## Biological Resources

Wildlife Habitat  
Wetlands  
Threatened and Endangered Species

## Airspace Management



## Change in Land Use

## Noise

Photo Credit: Butterfly, Joe Schelling; Bat, Adam Mann



# Community Resources to be Analyzed



Utility Requirements  
Availability and Cost of  
Civilian Housing  
Noise



Land Use  
Visual and  
Aesthetic  
Transportation

Recreational Impacts  
Safety  
Quality of Life



Hazardous Materials Management  
Hazardous Waste Management



Labor-related Issues  
Population Increase and  
Associated Effects  
Traffic Impacts



Additional  
Areas Identified  
in Scoping  
Process



# Proposed Actions to be Analyzed

## EIS will evaluate the impact of:

- Construction
  - Up to 60 Ground-based Interceptors and silos
  - Mission Facilities (i.e., interceptor fields)
  - Mission Support Facilities (i.e., missile assembly building, interceptor storage)
  - Non-Mission Facilities (i.e., offices, warehousing)
  - Living quarters, dining, schools, etc... if not available in immediate area
  - Off-site utilities and infrastructure
- Transportation routes
- Relocation or removal of on-base facilities, if necessary
- Decommissioning and disposal of components at end of life cycle
- Temporary housing and other facilities for construction workers
- CIS day-to-day operations
- No Action Alternative: no deployment of CIS



# Community Considerations

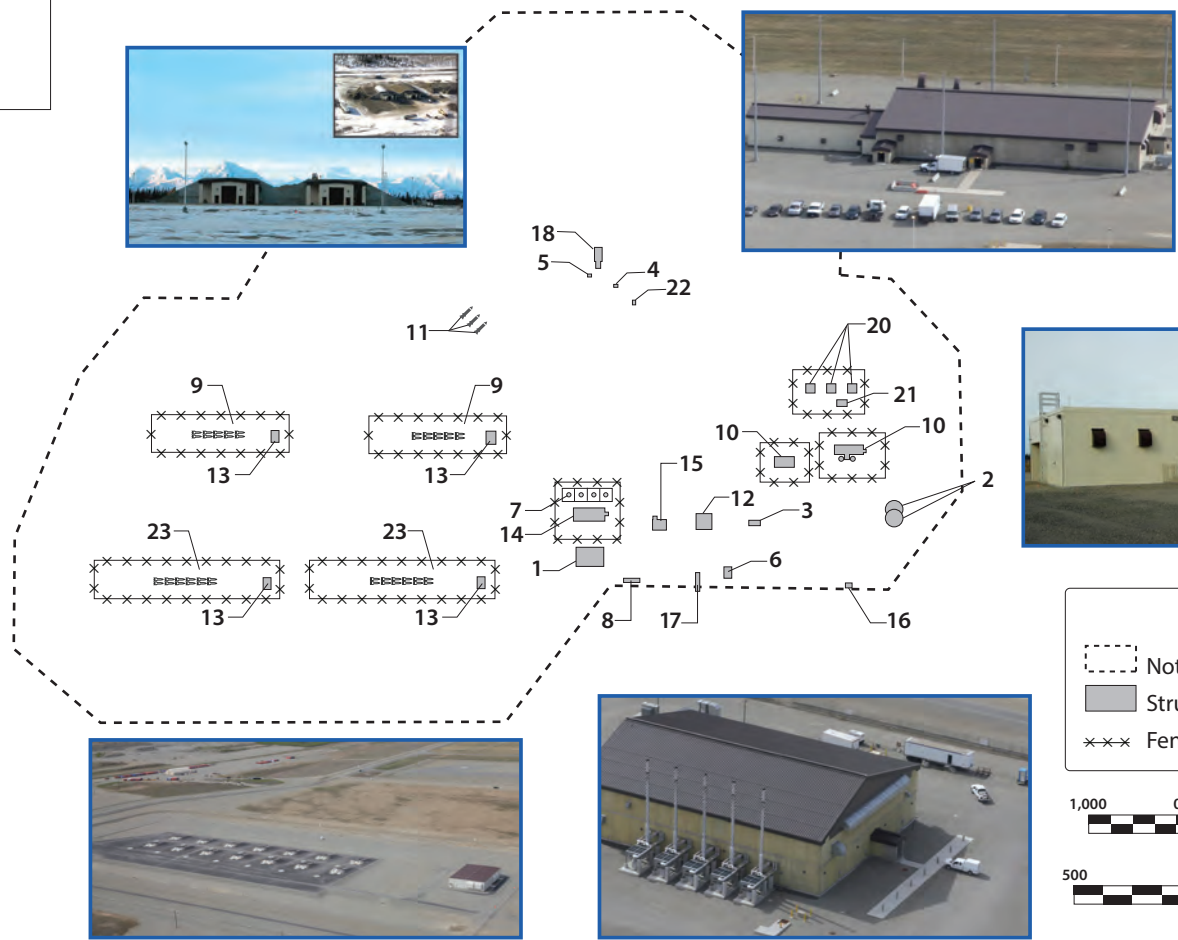
- Missiles would not be fired from their deployment site except in the nation's defense
- No test firing would be conducted
- Quality of life for soldiers and civilians
- Access to medical care and emergency services
- Limit construction disruption and contain costs
- Limit utility, road and support service needs
- Maximize use of existing facilities
- Use of local economy
  - Construction jobs
  - Permanent military, civilian and contractor personnel



# Facility Layout Example

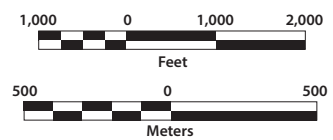
Notional CIS Layout -  
60 Silo Baseline Design  
Total Acreage: 1,338

ID	Description
1.	Power Substation
2.	Ammo CONEX
3.	Water Supply
4.	EKV Fuel Tank Storage
5.	EKV Oxidizer Tank Storage
6.	Entry Control Facility
7.	Fuel Storage
8.	Fuel Unloading
9.	10-Pack GBI Field
10.	R&CF
11.	ISF
12.	MSF
13.	MEB
14.	Power Plant
15.	SCF
16.	Wastewater Treatment
17.	Shipping & Receiving Facility
18.	MAB
19.	Urea Tank
20.	IDT Facility
21.	ISFAC
22.	Explosive Component Storage
23.	20-Pack Interceptor Field



**LEGEND**

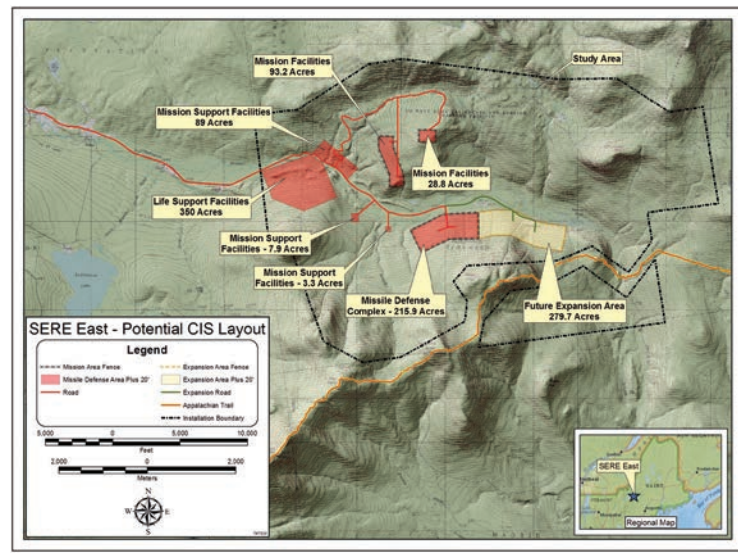
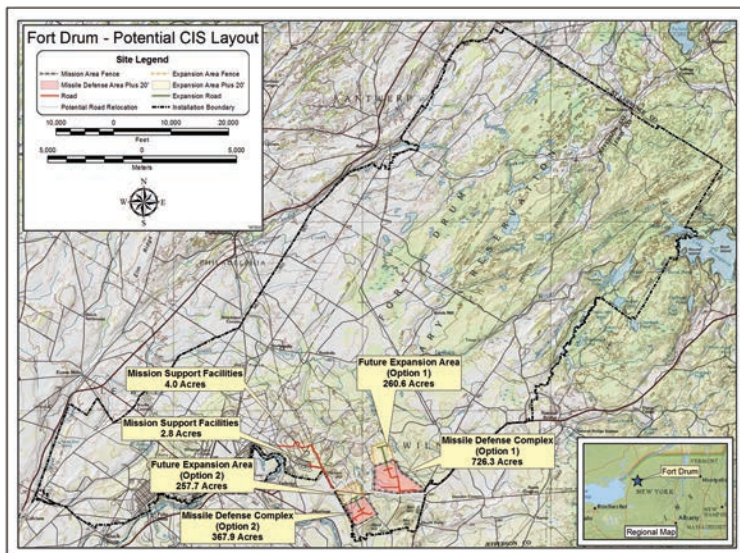
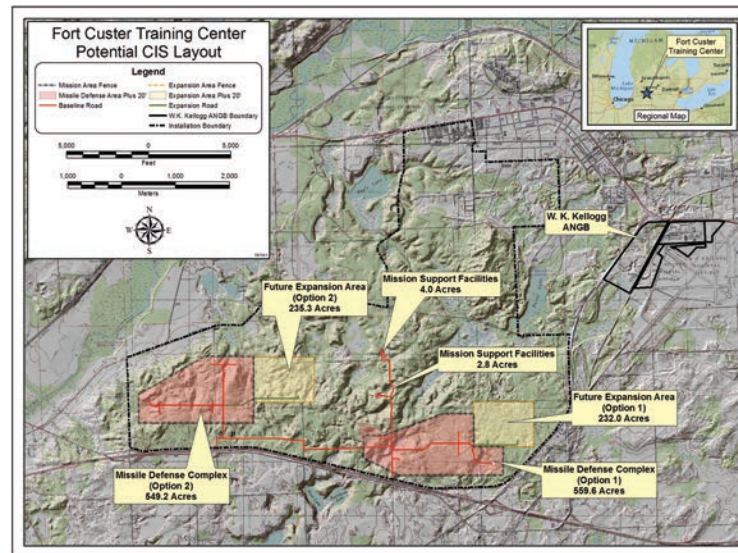
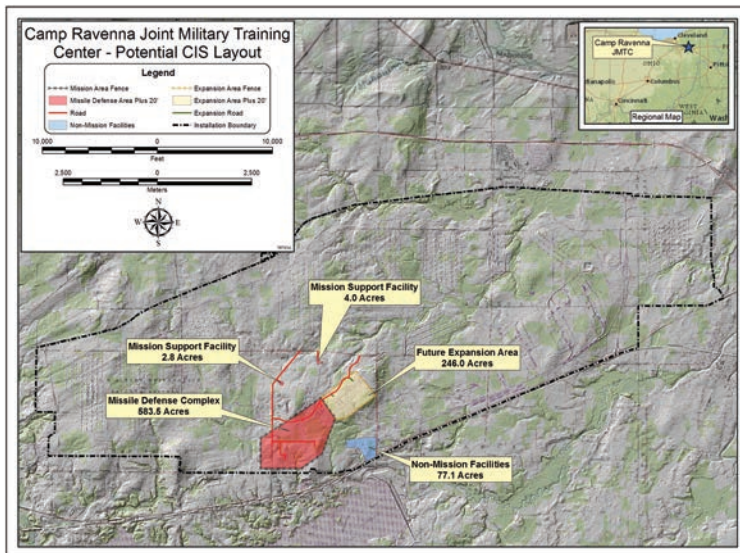
- Notional Boundary
- Structure
- xxx Fence



Photographs of Facilities at Fort Greely, AK

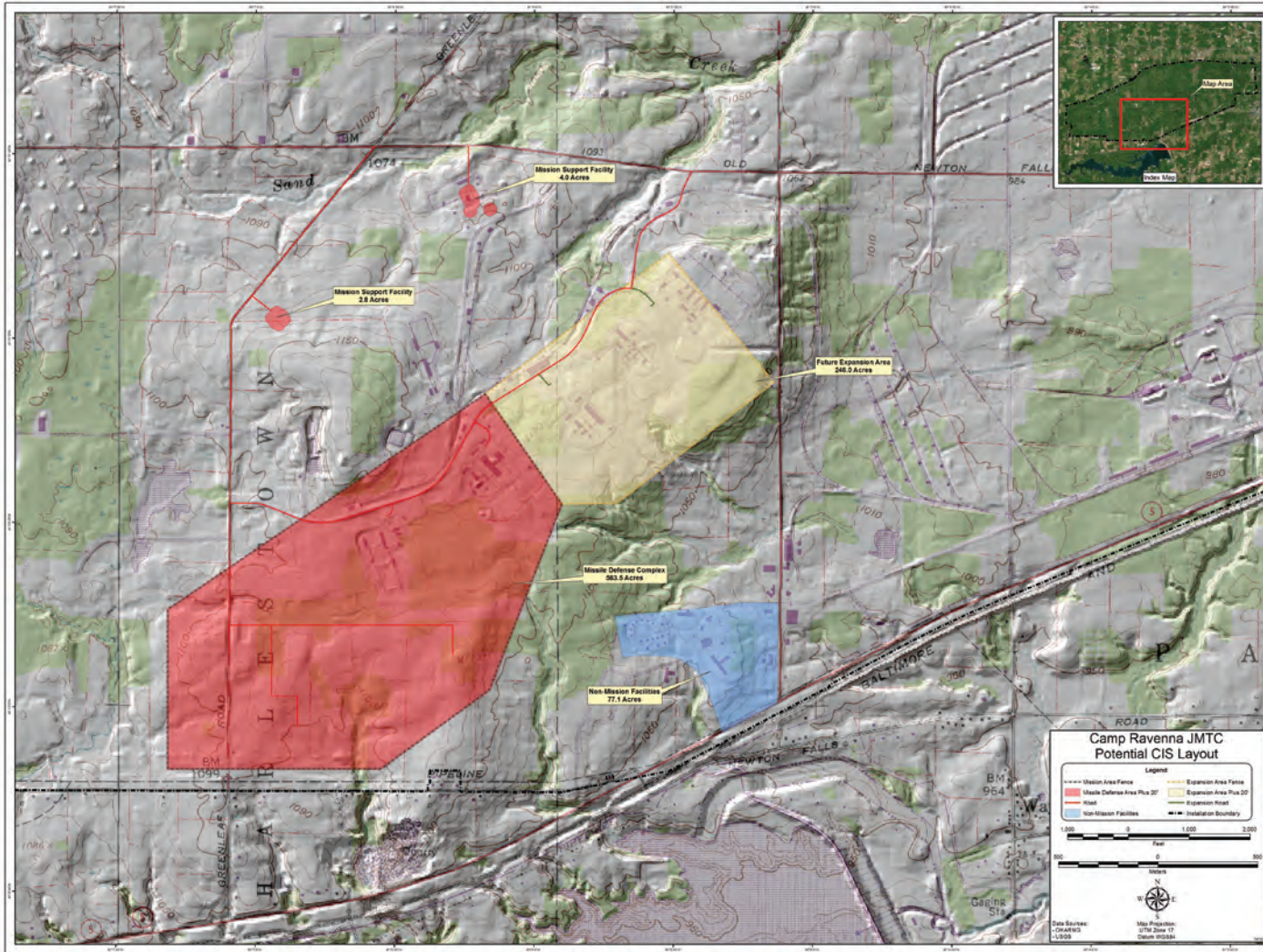


# Alternatives Considered in the EIS





# Camp Ravenna Proposed Site

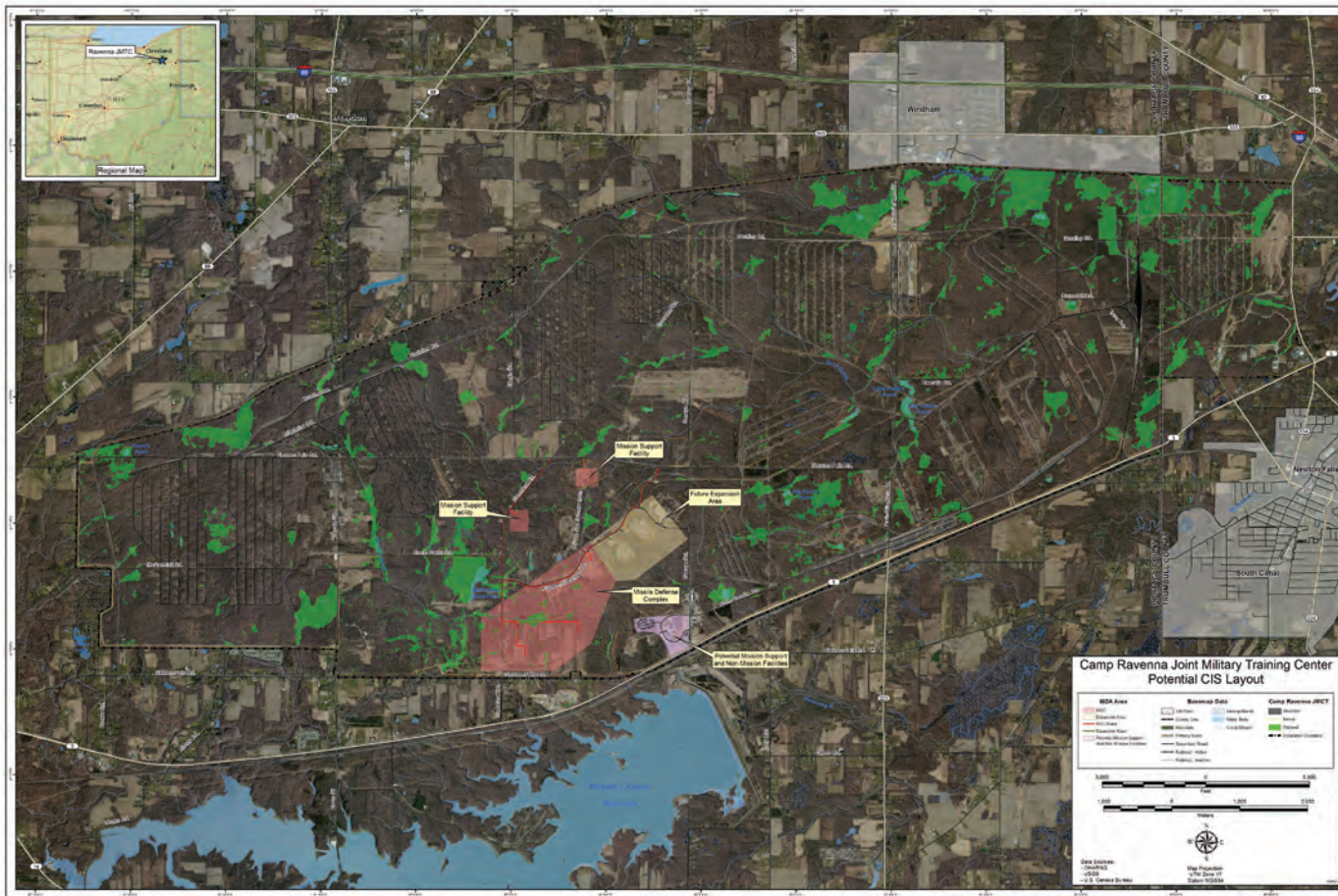


- Two possible construction methods for silos
- GBIs would be transported from Akron/Canton Regional Airport or Youngstown Air Reserve Station via public roads





# Camp Ravenna Environmental Areas Map



## Environmental Data for Proposed Site Location

### Existing Installation Data

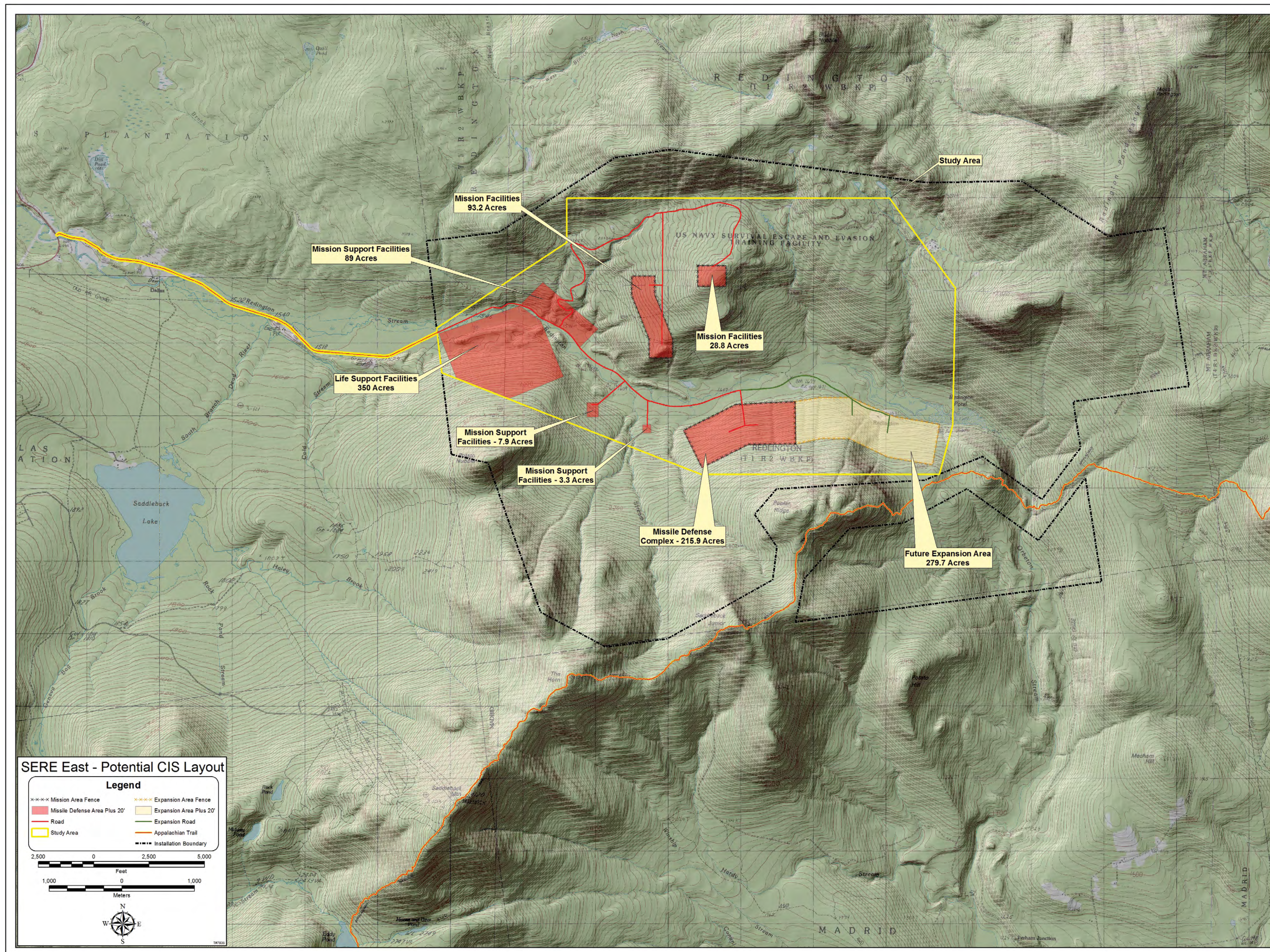
- Threatened and Endangered Species (Bat Survey)
- Water Quality
- Flora & Fauna Inventory
- Bald Eagle Nest
- Forest Inventory
- Cultural Resources
- USGS Watershed Inventory
- Breeding Birds Inventory

### Current Survey Efforts

- Cultural Resources (450 acres)
- Geology and Soil
- Noise
- Visual
- Wetlands (2,080 acres)



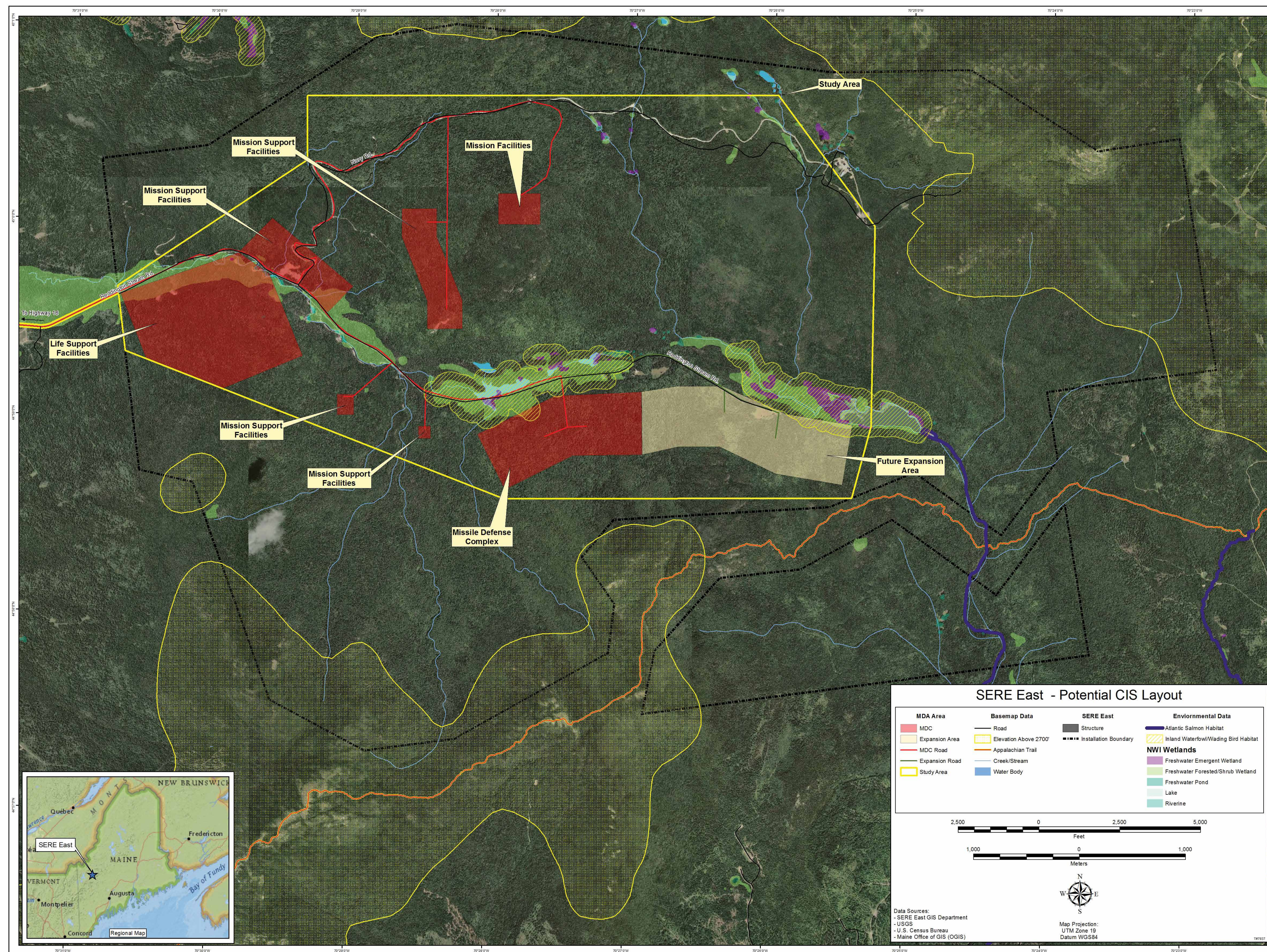
# SERE East Proposed Site



- Missile defense components and facilities would be located at multiple sites to accommodate terrain
- Redington Road from Highway 16 to entrance of SERE would be upgraded to asphalt
- All living and working facilities would be constructed onsite
- GBIs would be transported from Bangor International Airport by public roads
- SIV/SILO transportation may require road upgrades from Augusta to Rangeley (i.e., Route 27 and Route 4)



# SERE East Environmental Areas Map



## Environmental Data for Proposed Site Location

### Existing Installation Data

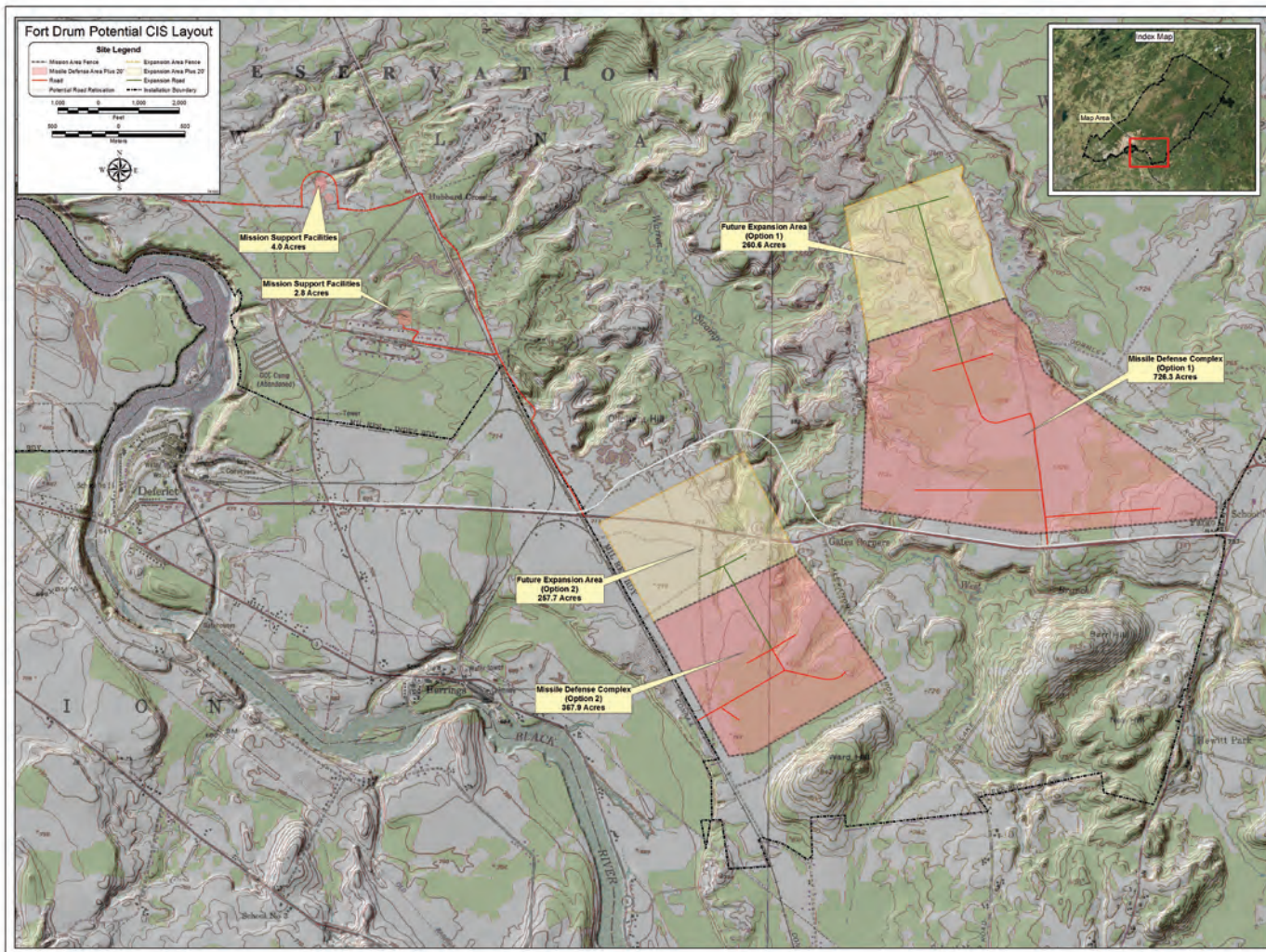
- Cultural Resources
- Wetlands and Groundwater
- Flora and Fauna, including Threatened, Endangered and Special Concern Species
- Significant Wildlife Habitat
- Forest Resources

### Current Survey Efforts

- Bird & Bat Acoustic Monitoring (7,400 acres)
- Vernal Pool Survey (500 acres)
- High Elevation Bird Survey (400 acres)
- Archaeological Survey (5,700 acres)
- Cultural Affiliation Study
- Forest Inventory (5,700 acres)
- Wetland Delineation (5,700 acres)
- Geotechnical Survey
- Noise Assessment
- Visual Assessment



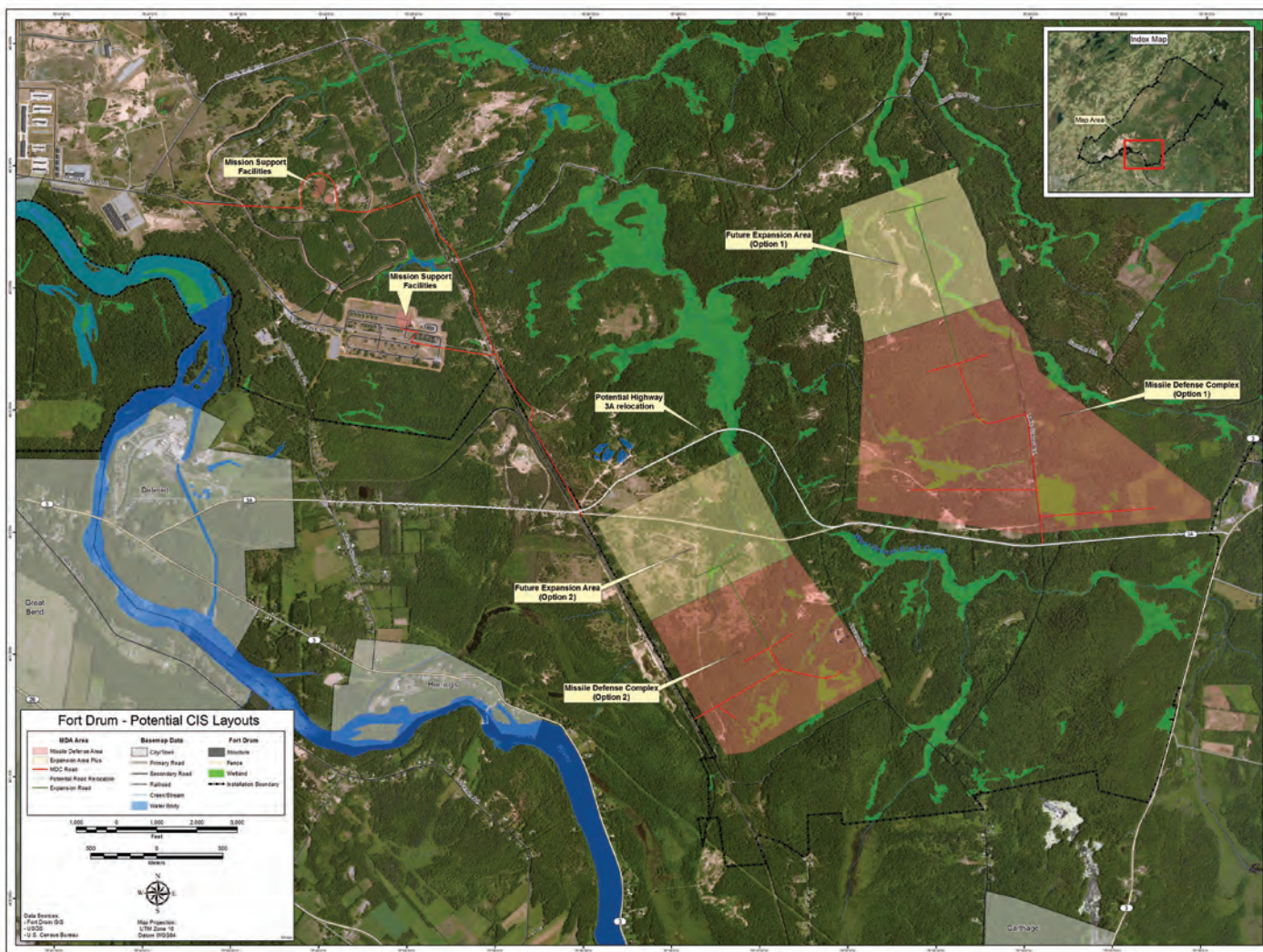
# Fort Drum Proposed Site



- Two potential deployment sites (only one would be selected)
- Both sites would use common Mission Support Facilities
- Potential for State Road 3A to be closed or relocated if Option 2 is selected
- Wheeler-Sack Army Airfield would be used to transport GBIs



# Fort Drum Environmental Areas Map



## Environmental Data for Proposed Site Location

### Existing Installation Data

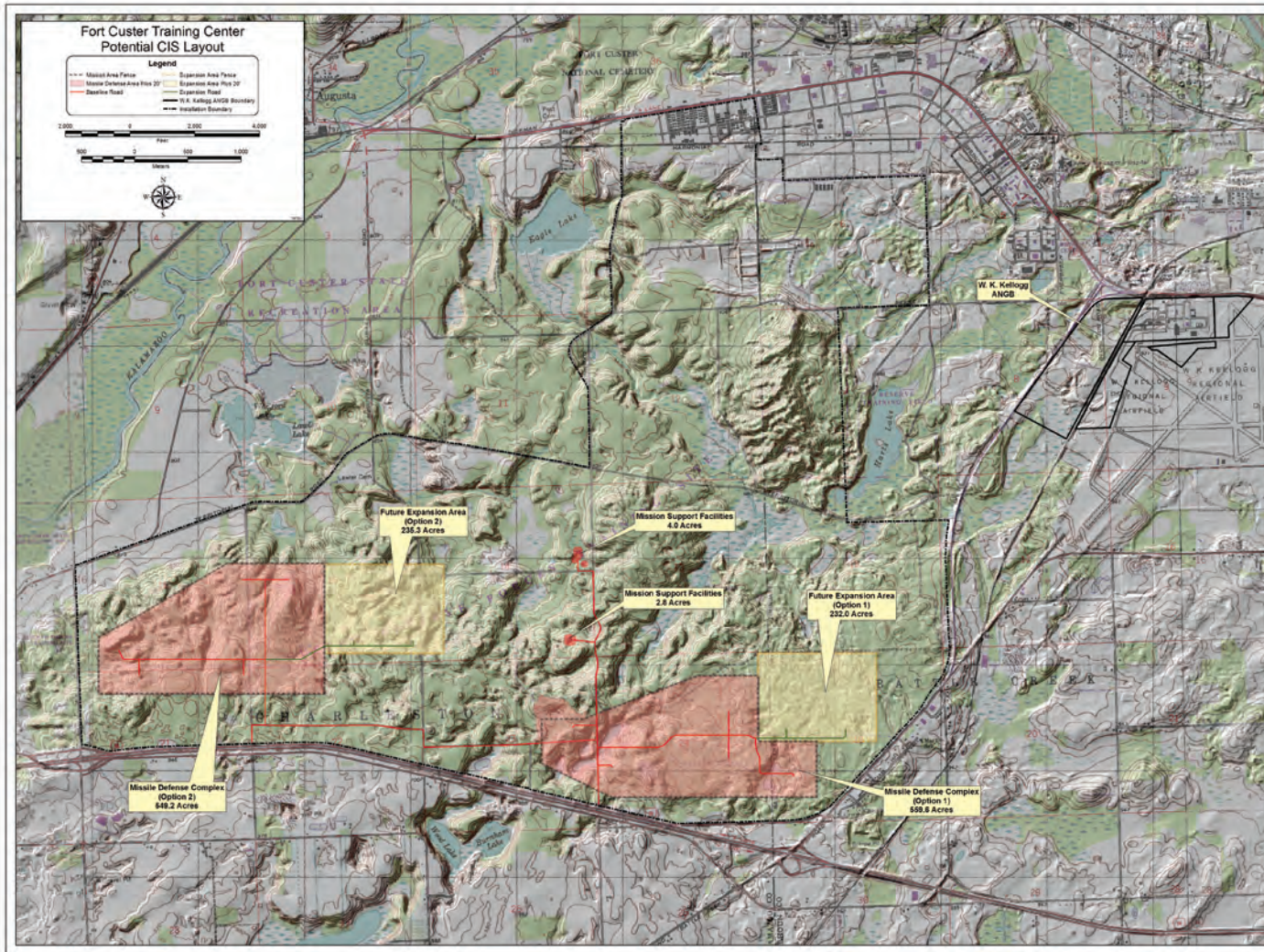
- Bat Survey
- Wetlands and Groundwater
- Flora and Fauna, including Threatened, Endangered and Special Concern Species
- Significant Wildlife Habitat
- Forest Resources

### Current Survey Efforts

- Cultural Resources
- Geotechnical
- Noise Assessment
- Visual Assessment
- Wetland Assessment



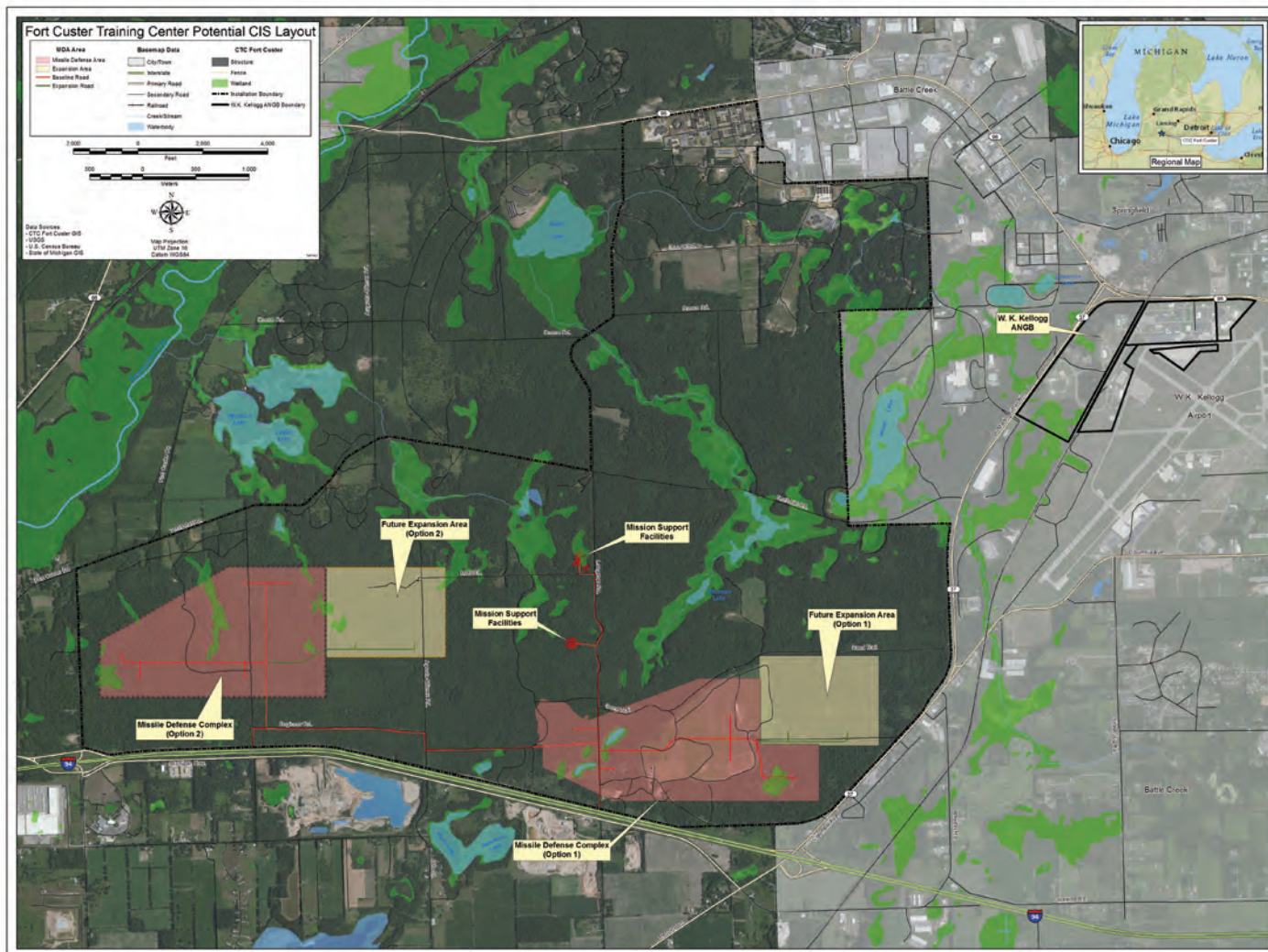
# Fort Custer Proposed Sites



- Two potential deployment sites (only one would be selected)
- Both sites would use common Mission Support Facilities
- Facilities at W.K. Kellogg ANGB would be considered for potential reuse
- W.K. Kellogg Airport would be used to transport GBIs to Fort Custer



# Fort Custer Environmental Areas Map



## Environmental Data for Proposed Site Location

### Existing Installation Data

- Wetlands and Groundwater
- Flora and Fauna, including Threatened, Endangered and Special Concern Species
- Significant Wildlife Habitat
- Forest Resources

### Current Survey Efforts

- Butterfly Survey (120 acres)
- Wetlands Delineation (7,400 acres)
- Bat Survey (7,400 acres)
- Cultural Resources
- Geotechnical
- Noise Assessment
- Visual Assessment