

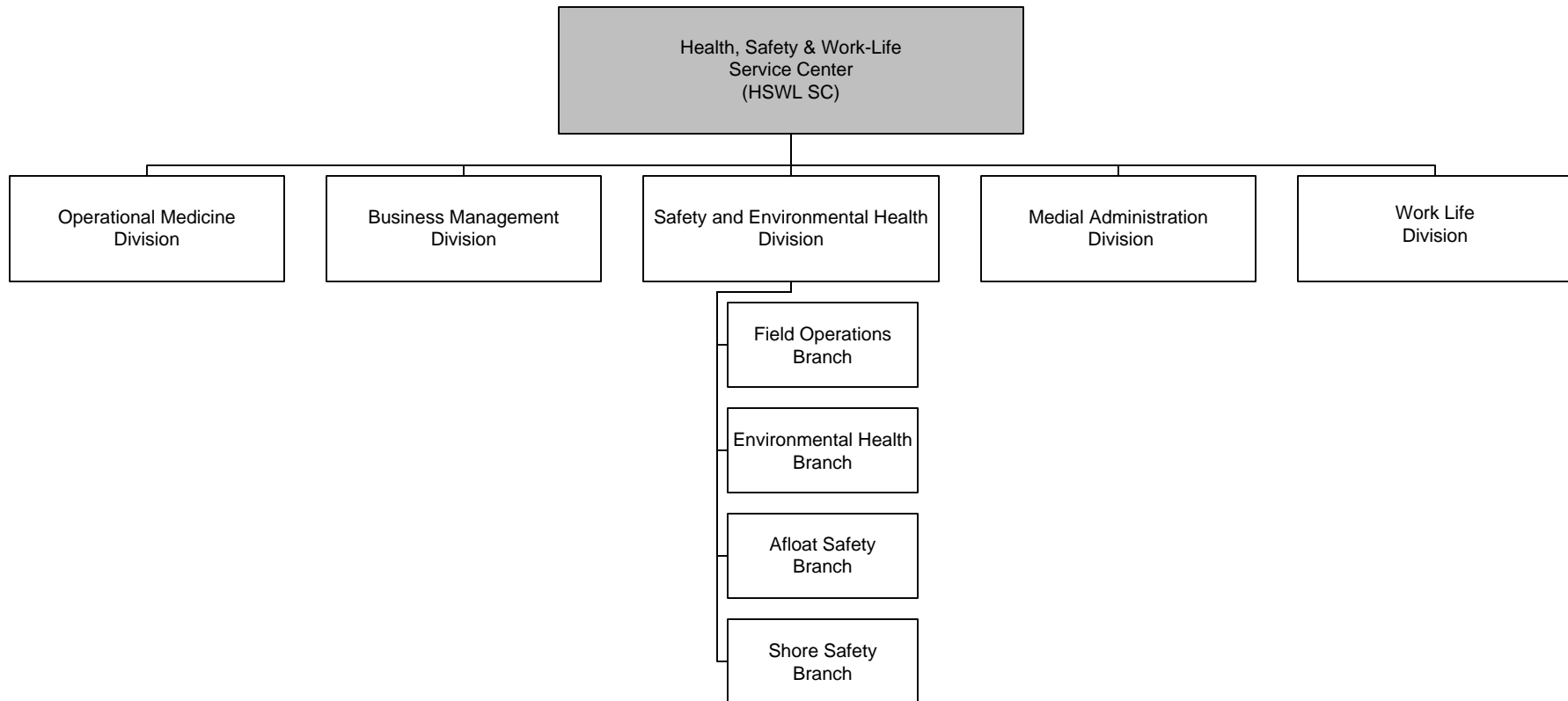
Gray shaded organizations are CG Headquarters Units. The reporting relationship (Technical Control) is described within their respective functional statements and is reflected here via dashed lines.

Note 1: Operating Location Millington, TN

Approved: VCG 21 May 2013  
 Updated: CG-11 OMR App: CG-81 22 Jul 2013  
 Updated: CG-113 OMR App; CG-81 31 Mar 2014  
 Updates: CG-121 OMR. App: CG-81 30 Sep 2014

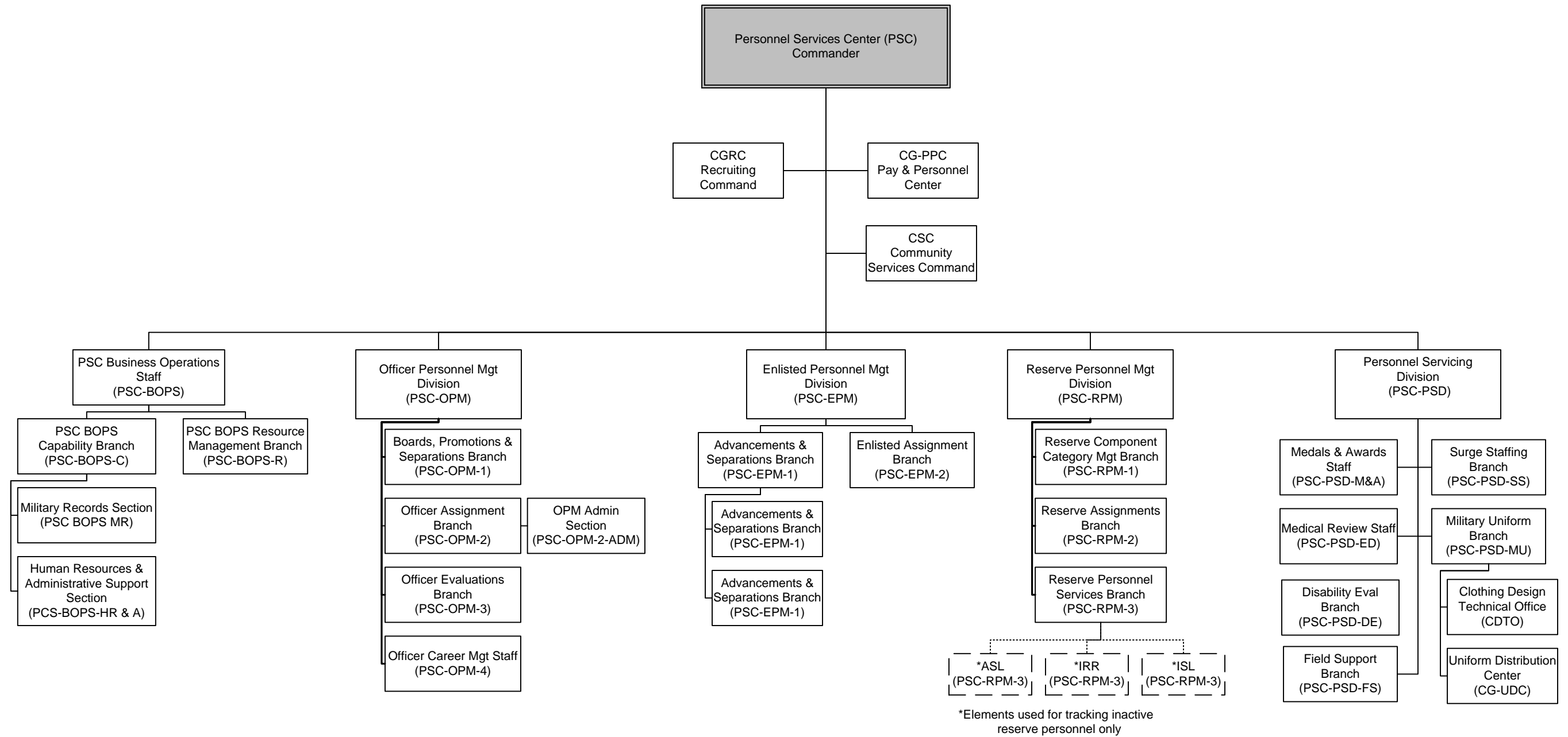
United States Coast Guard  
Health, Safety and Work-Life Service Center

(CG-HSWL SC)



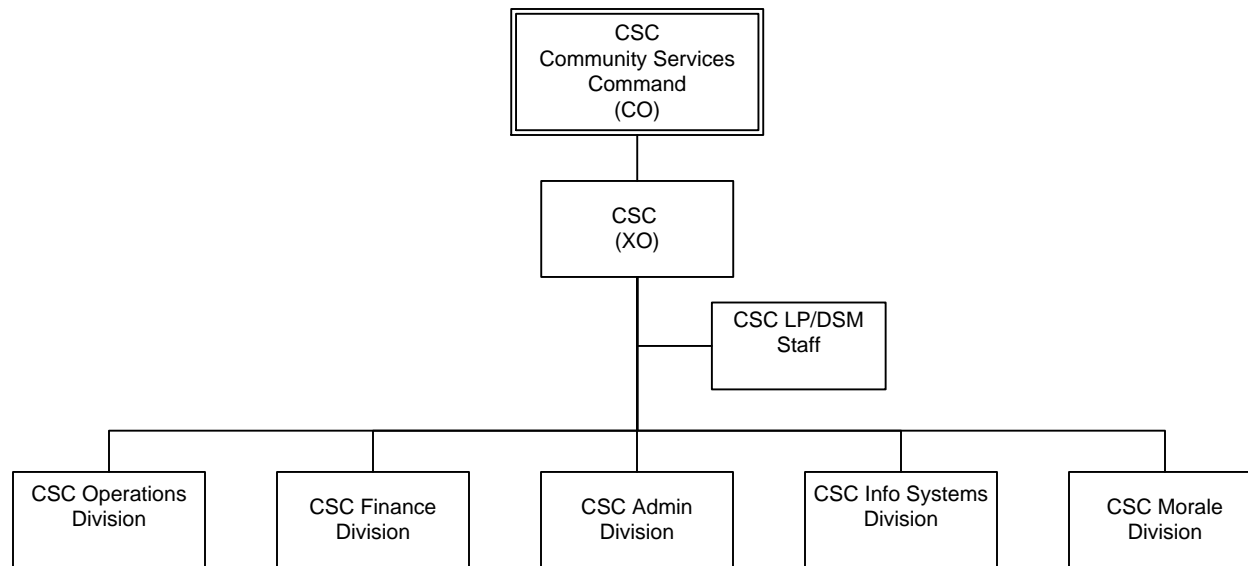
Approved: VCG 18 Feb 2009  
Update: CG-1 11 May 2009: HSWL aligned under CG-11  
Update: CG-81: 12 Apr 2012: HSWLFO's disestablished thru Base Initiative

United States Coast Guard  
 Personnel Services Center  
 (CG-PSC)



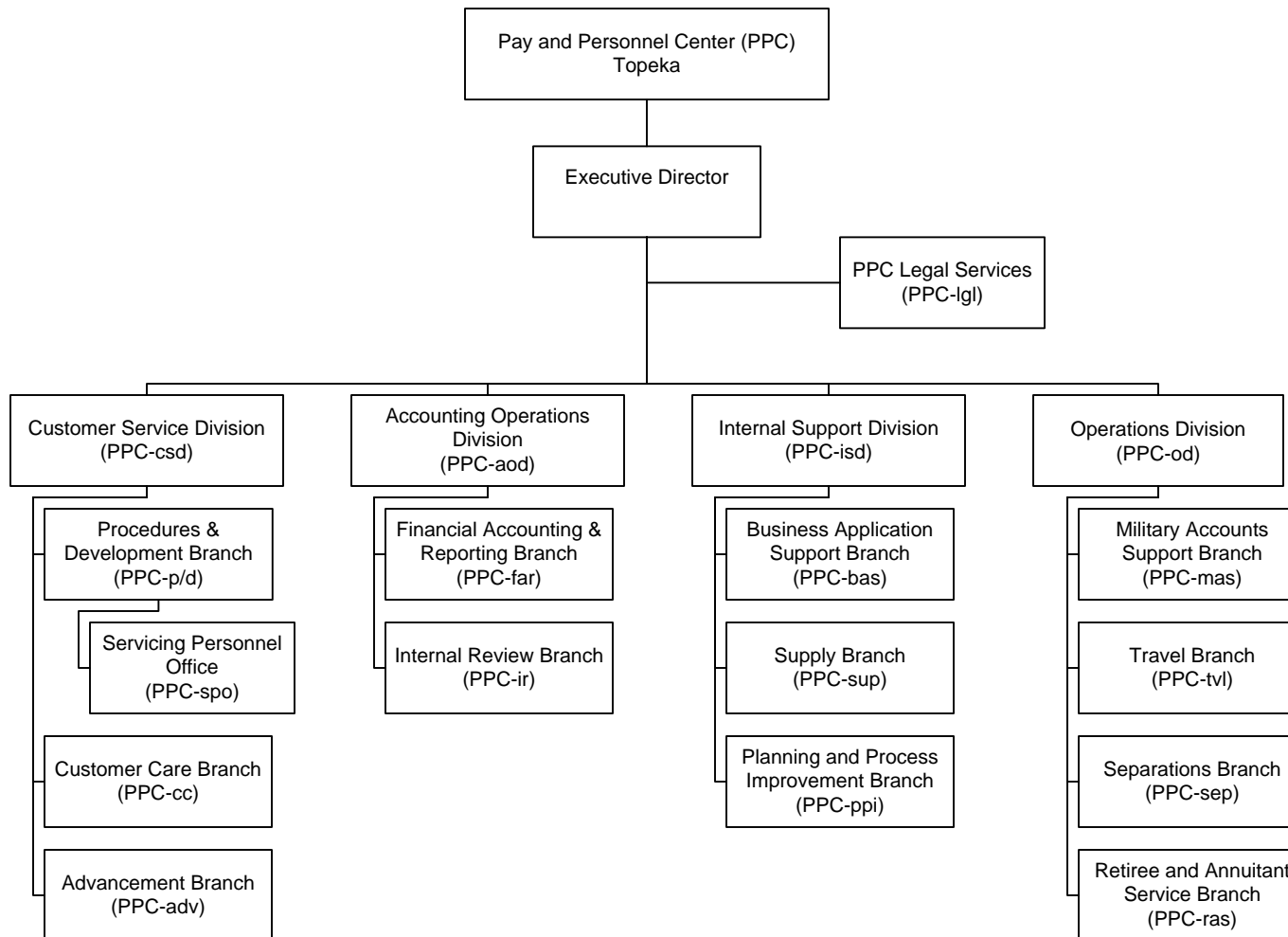
United States Coast Guard  
Community Services Command

(PSC-CSC)



# United States Coast Guard Pay and Personnel Center

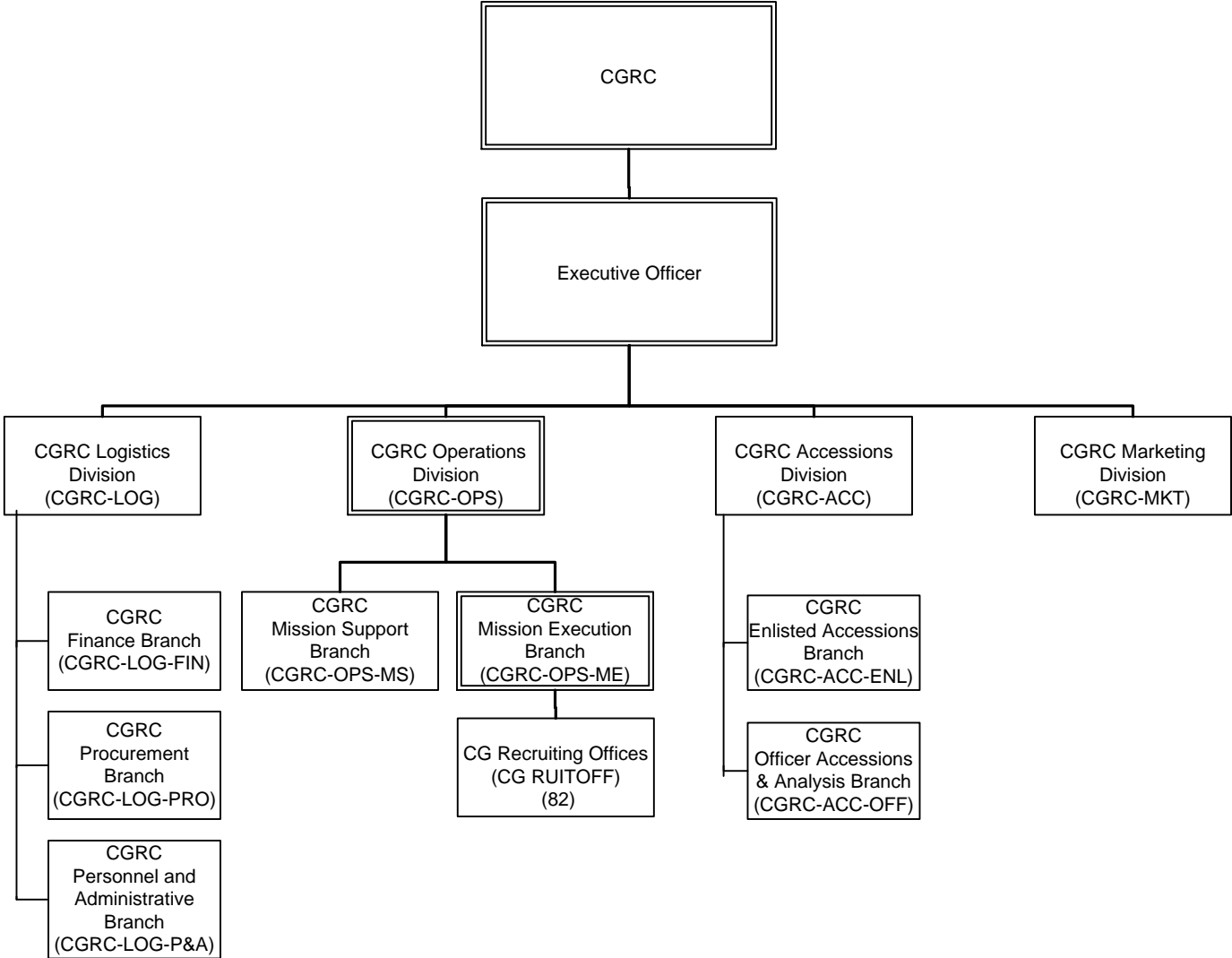
(PSC-PPC)



Approved: CG-81: 8 May 2013

United States Coast Guard  
Recruiting Command

(PSC-CGRC)



Approved: VCG 18 Feb 2009  
CGRC: Amended: CG-81 14 Feb 2012  
Approved CG-81\_8 Oct 2015