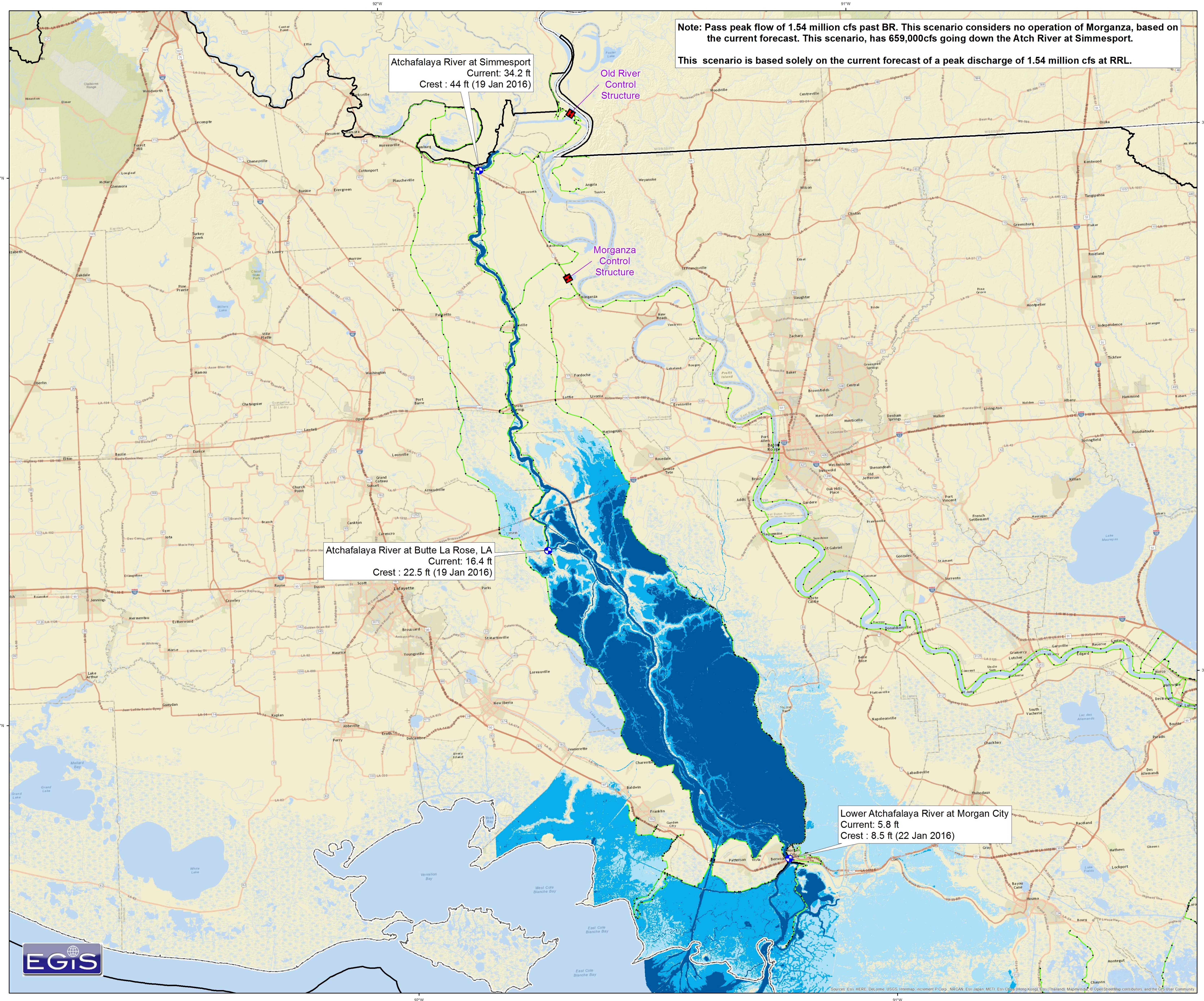


US Army Corps
of Engineers
Mississippi Valley Division

Atchafalaya Basin / Morganza Floodway Inundation

No Action

07 Jan 2016
@
0900 HRS



Note: Pass peak flow of 1.54 million cfs past BR. This scenario considers no operation of Morganza, based on the current forecast. This scenario, has 659,000cfs going down the Atch River at Simmesport.
This scenario is based solely on the current forecast of a peak discharge of 1.54 million cfs at RRL.

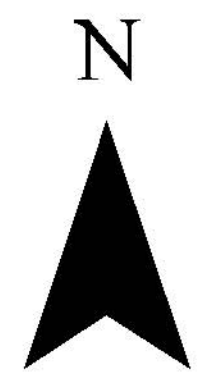
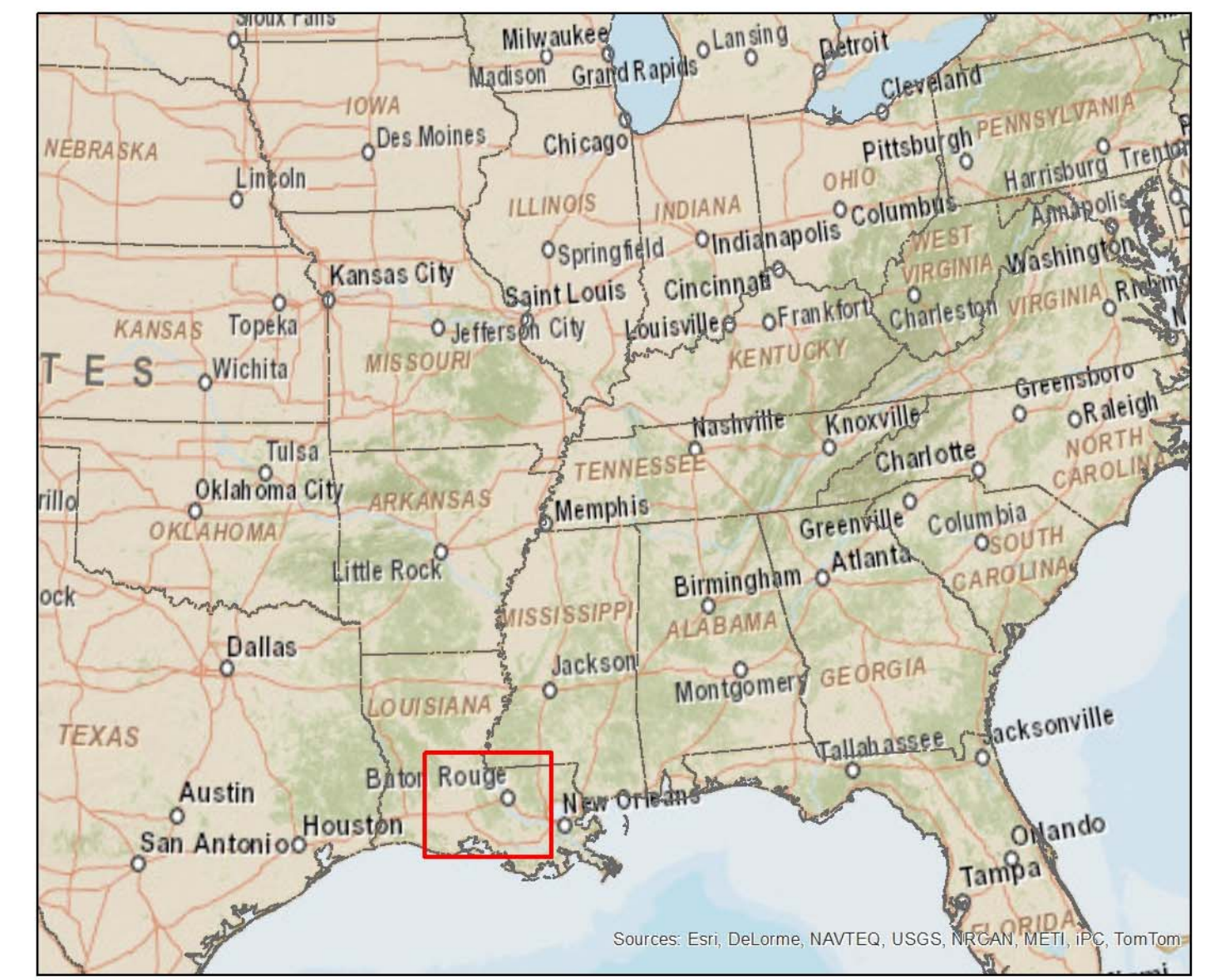
Atchafalaya River at Simmesport
Current: 34.2 ft
Crest : 44 ft (19 Jan 2016)

Atchafalaya River at Butte La Rose, LA
Current: 16.4 ft
Crest : 22.5 ft (19 Jan 2016)

Lower Atchafalaya River at Morgan City
Current: 5.8 ft
Crest : 8.5 ft (22 Jan 2016)

Potential Inundation Depth

- 0 - 2 ft (Potential Flooding)
- 2 - 6 ft
- Greater than 6 ft
- Gage
- Levee
- USACE New Orleans District (MVN)



Disclaimer:
This map has been compiled using the best information available and is believed to be accurate; however, its preparation required many assumptions. Actual conditions during a flood event may vary from those assumed, so the accuracy cannot be guaranteed. The limits of flooding shown should only be used as a guideline for emergency planning and response actions. Actual areas inundated will depend on specific flooding conditions and may differ from the areas shown on the map.

