



Public safety is the Corps of Engineers' top priority. Congress has fully authorized and funded the Hurricane and Storm Damage Risk Reduction System (HSDRRS) for southeast Louisiana. The \$14.45 billion HSDRRS includes five parishes and consists of 350 miles of levees and floodwalls; 73 non-Federal pumping stations; 3 canal closure structures with pumps; and 4 gated outlets.

### Project Summary

Improvements to the risk reduction features in St. Charles Parish are a part of the Lake Pontchartrain and Vicinity portion of the hurricane system. Located on the east bank of the Mississippi River, the boundary of the St. Charles Parish project area includes the Bonnet Carré Spillway Lower Guide Levee, which runs from the Mississippi River until slightly north of Airline Highway (US Hwy 61), then turns east roughly paralleling Airline Hwy (US Hwy 61) to the Jefferson-St. Charles Parish boundary near the Louis Armstrong New Orleans International Airport where it ties into the LPV-Jefferson Parish project.

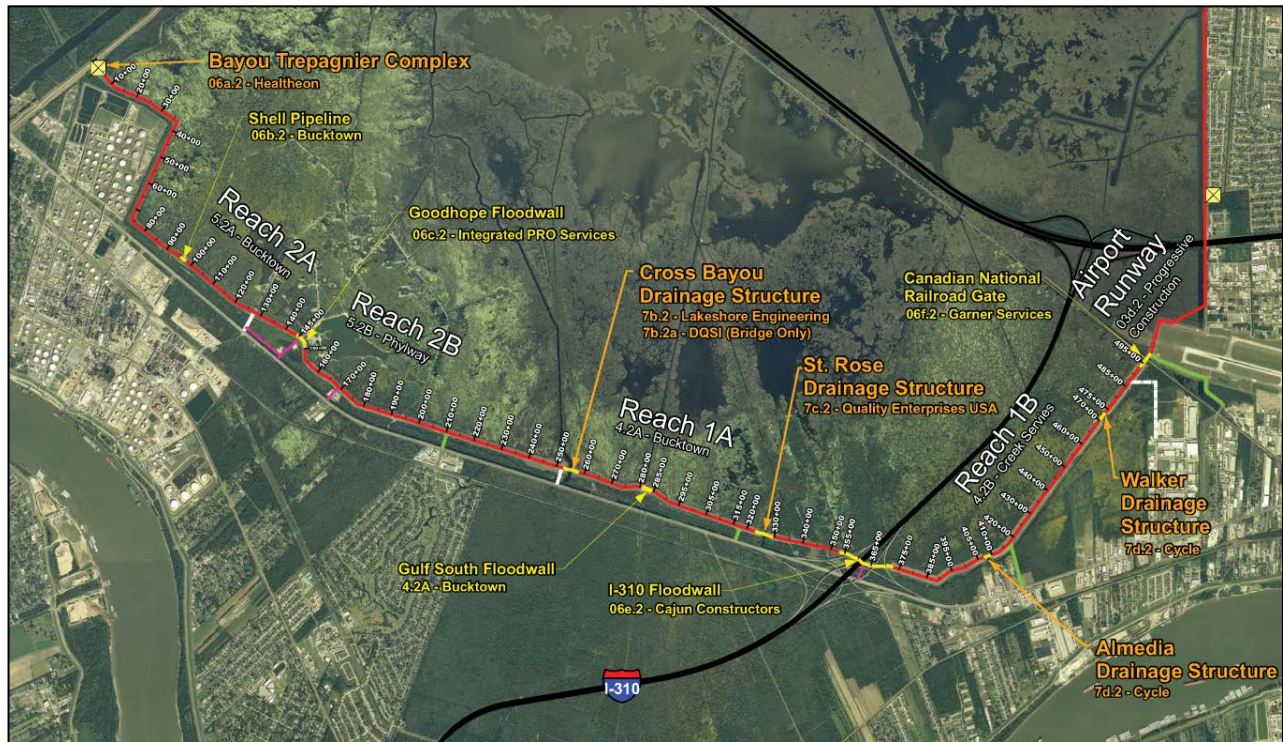
The structural features built by the Corps reduce the risk associated with a storm surge event that has a one percent chance of occurring in any given year, or a 100-year storm surge. The total construction value of the LPV-St. Charles Parish project is an estimated \$100 million.

### Project Features

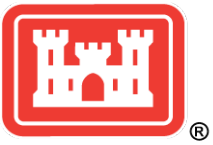
This portion of the risk reduction system is divided into four reaches, which include approximately 9.5 miles of levees, four drainage structures, four floodwalls and a railroad gate. Construction of the St. Charles Parish risk reduction features included the development of a bird abatement program which prevented birds from nesting near the project site and delaying construction.

### Project Status

All 100-year level risk reduction features in the LPV-St. Charles Parish project area were completed May 2011.



**U.S. ARMY CORPS OF ENGINEERS – TEAM NEW ORLEANS**  
7400 Leake Avenue, New Orleans, LA 70118 | [www.mvn.usace.army.mil](http://www.mvn.usace.army.mil)  
Visit the following links to follow us on Facebook, Twitter and Flickr:  
[www.facebook.com/neworleansdistrict](http://www.facebook.com/neworleansdistrict)  
[www.twitter.com/teamneworleans](http://www.twitter.com/teamneworleans)  
[www.flickr.com/teamneworleans](http://www.flickr.com/teamneworleans)



# ST. CHARLES PARISH

Updated May 2013

U.S. ARMY CORPS OF ENGINEERS

BUILDING STRONG®



Above: Aerial image of Bayou Trepagnier Pump Station taken July 2012

Left: I-310 Floodwall and levee tie-in. Image taken July 2012



Above: Aerial image of Goodhope Floodwall. Image taken July 2012.

---

**U.S. ARMY CORPS OF ENGINEERS – TEAM NEW ORLEANS**  
7400 Leake Avenue, New Orleans, LA 70118 | [www.mvn.usace.army.mil](http://www.mvn.usace.army.mil)  
Visit the following links to follow us on Facebook, Twitter and Flickr:  
[www.facebook.com/neworleansdistrict](http://www.facebook.com/neworleansdistrict)  
[www.twitter.com/teamneworleans](http://www.twitter.com/teamneworleans)  
[www.flickr.com/teamneworleans](http://www.flickr.com/teamneworleans)