

# ***NGO Partnership Meeting New Orleans District Regulatory Update***

***Martin Mayer  
September 25, 2014***



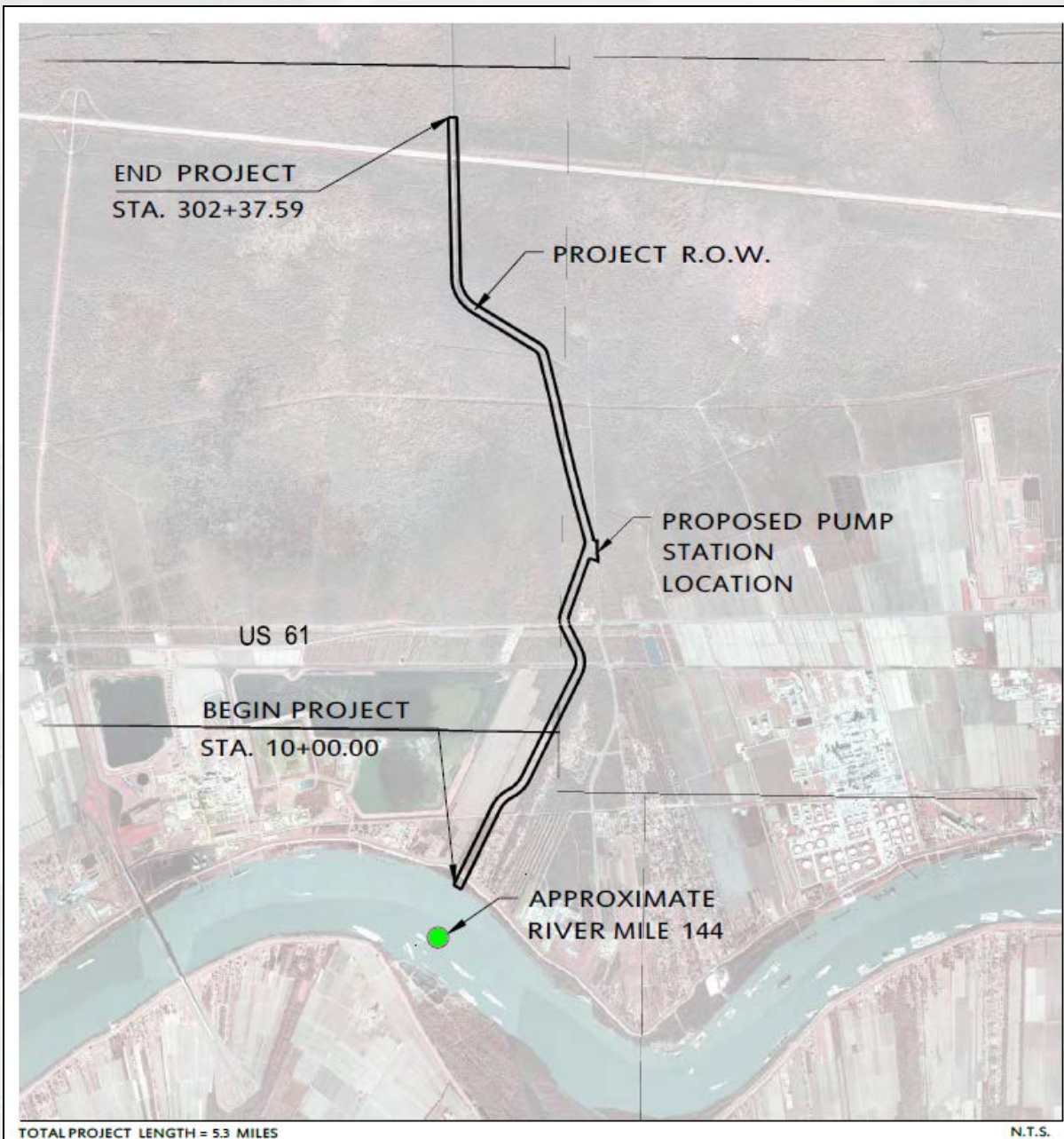
®

**US Army Corps of Engineers  
BUILDING STRONG®**



# Project Plan View

Mississippi River  
Reintroduction into  
Maurepas Swamp



# Louisiana Coastal Protection Authority (CPRA):

## MVN-2013-1561-CQ

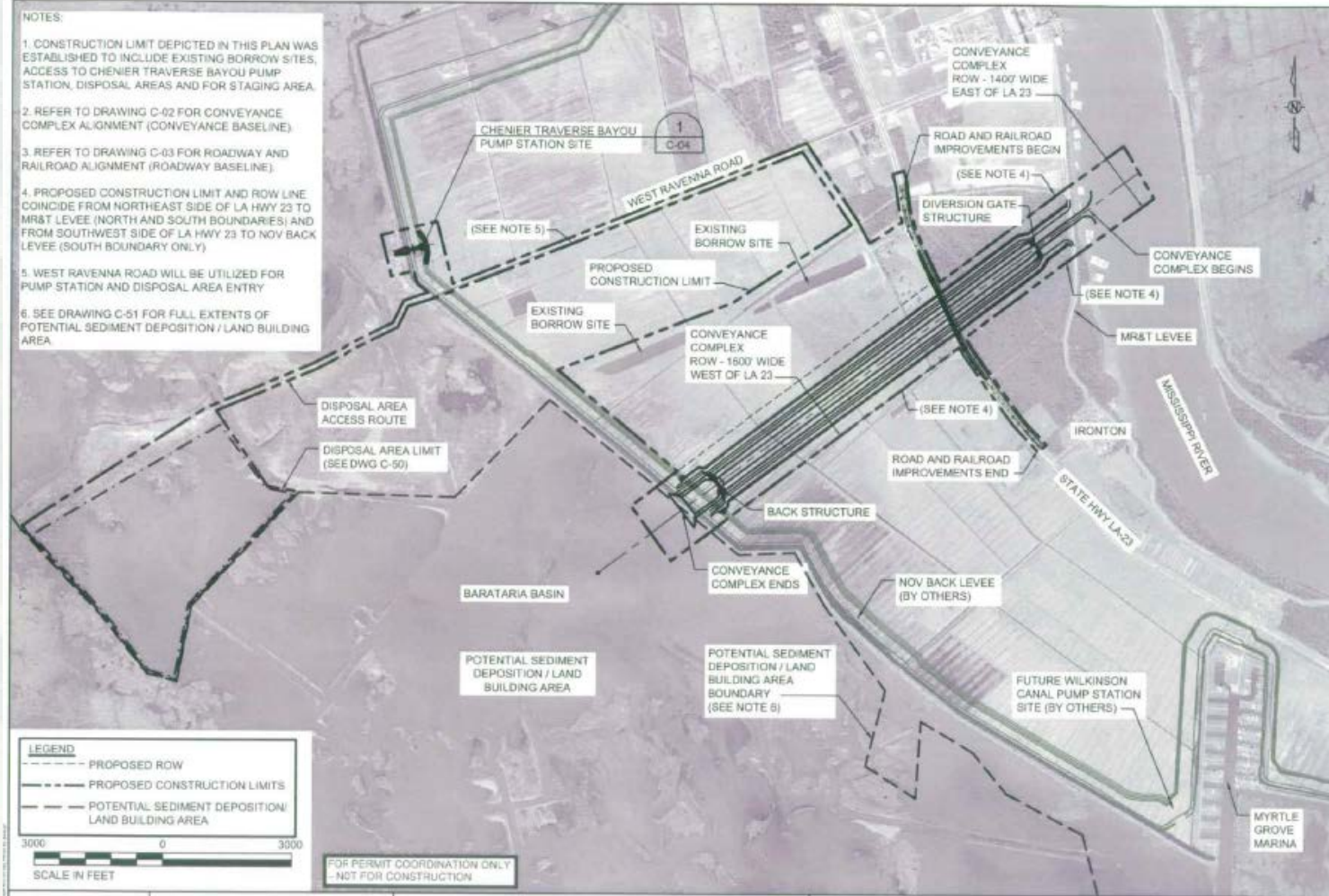
### Mississippi River Reintroduction into Maurepas Swamp (PO-29)

- **Proposed Project:** Construct three 10'x10' concrete box culverts and a 5.5-mile conveyance channel to divert up to 5000 cfs freshwater to Maurepas Swamp.
  
- **Project Evaluation Milestones**
  - ▶ Application complete on August 14, 2013; 30-day JPN issued August 26, 2013.
  - ▶ Comments received from: USFWS, EPA, LDWF, NMFS, USCG, Entergy LA, MNSA, NGOs.
  - ▶ Comments forwarded to applicant on October 29, 2013.
  - ▶ Applicant provides large data package December 11, 2013; JPN comments not addressed.
  - ▶ MVN completed EA May 21, 2014; concluded EIS required due to:
    - potential significant impacts on MR&T,
    - potential significant impacts public safety (FPS/hurricane evacuation routes),
    - ecosystem changes Pontchartrain Basin dynamics (HSDRRS/WSLP).
  - ▶ Applicant informed MVN on August 22, 2014, it will not fund Third Party Contractor for EIS.
  
- **Status**
  - ▶ Publication of NOI in Federal Register pending.
  - ▶ Resolution of Third Party Contractor issue pending.



# Project Plan View

## Mid-Barataria Sediment Diversion



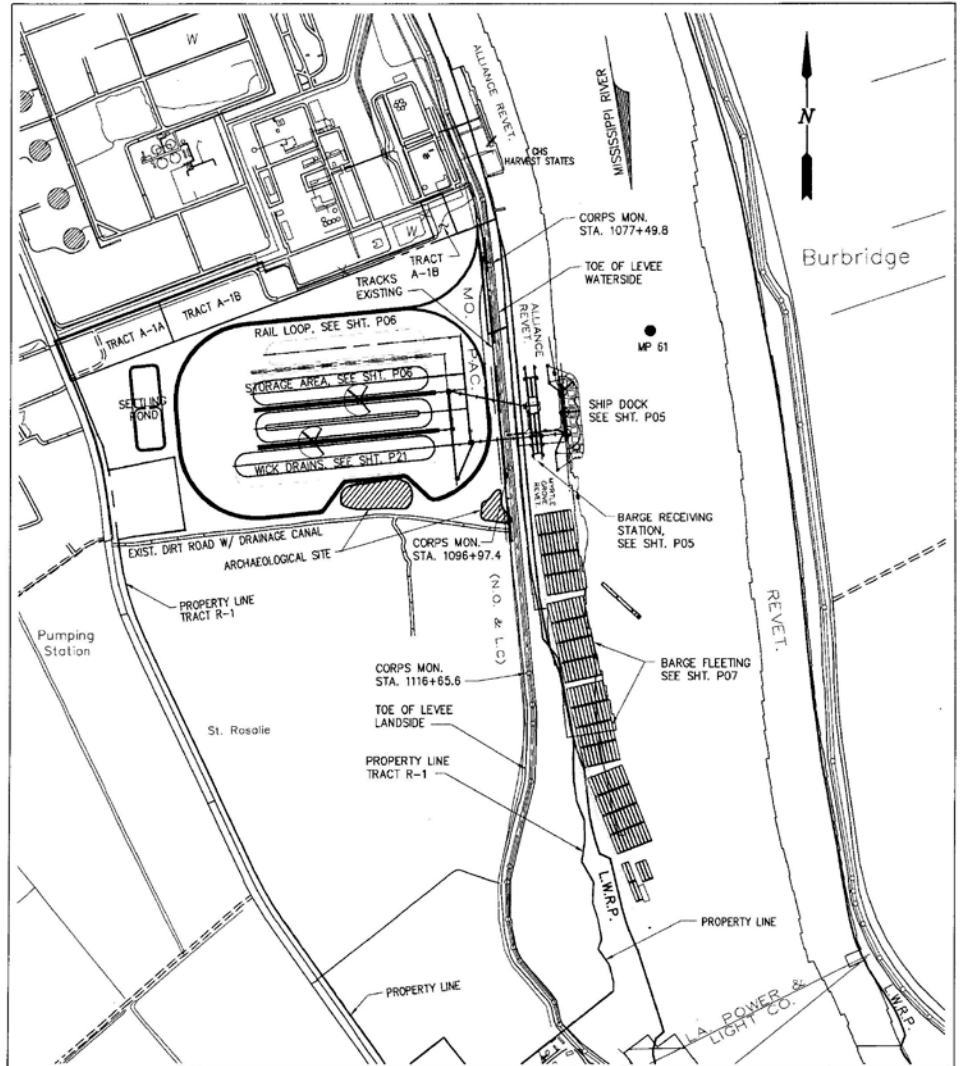
			<b>COASTAL PROTECTION &amp; RESTORATION AUTHORITY ENGINEERING DIVISION</b> 450 LAUREL STREET BATON ROUGE, LOUISIANA 70801		<b>MID-BARATARIA SEDIMENT DIVERSION</b>		<b>SITE OVERVIEW</b>	
			DRAWN BY: HDD	DESIGNED BY: PGG	STATE PROJECT NUMBER: BA-153	FEDERAL PROJECT NUMBER: BA-153	DATE: JULY 2013	DRAWING: C-01



## Mid-Barataria Sediment Diversion


- **Proposed Project:** Construct a conveyance complex w/gated diversion structure and concrete channel approximately 2 miles long to divert up to 75,000 cfs of sediment-laden flow for land-building in Barataria Basin.
  
- **Project Evaluation Milestones**
  - ▶ Application complete August 13, 2013.
  - ▶ Significance determination issued August 28, 2013.
  - ▶ Notice of Intent to prepare EIS published in Federal Register October 4, 2013.
  - ▶ MVN provided applicant information/documentation to support preparation of an EIS (draft SOW, SOR, etc.) on February 4, 2014.
  
- **Status**
  - ▶ MVN and OCPR continue discussions to fine-tune language of documents.
  - ▶ Applicant to submit list of qualified Third Party Contractors available for EIS preparation.
  - ▶ Upon selection of the TPC by MVN, scoping process will be initiated.





# Project Plan View

## RAM Terminals, LLC Coal Export Facility

 <p><b>LANIER &amp; ASSOCIATES</b> CONSULTING ENGINEERS INCORPORATED NEW ORLEANS, LA · BEAUMONT, TX</p>	<p><b>RAM TERMINALS, LLC</b> MYRTLE GROVE LOUISIANA</p>	<p>8733-P04 DATE: JUNE '14 DESIGN: ARF DRAWN: JLF CHECK: JEF CONTRACT: 8733 SHEET No. 4 OF 27</p>
	<p><b>COAL EXPORT FACILITY OVERALL SITE PLAN</b></p>	



RAM Terminals, LLC  
MVN-2012-0123-EPP  
**Coal Export Facility**

▪ **Description**

- ▶ Clear, grade, excavate and deposit fill to construct an approximately 200-acre coal export facility including: coal storage, terminal, barge fleetling and rail access.

▪ **Project Evaluation Milestones**

- ▶ March 12, 2012: Received application.
- ▶ April 16, 2012: Posted project on Public Notice for 30 days.
- ▶ September 2012: Internal coordination completed.
- ▶ September 11, 2013: Issuance of CUP.
- ▶ December 20, 2013: Issuance of WQC.
  - Verified Air and LPDES permits received.
- ▶ August 7, 2014: Received revised permit application (reduction of wetland impacts to 3.7 acres).
- ▶ September 11, 2014: Received receipt of mitigation credits purchased.

▪ **Status**

- ▶ Finalizing Decision Document.



ST. TAMMANY PARISH, LOUISIANA  
"Eads Poitevent No. 1 Well"  
LAT: 30° 23' 11.58" N  
LONG: 89° 58' 45.79" W



**Legend**  
--- Existing 14' Wide Access Road (Non-Wet)  
■ Proposed Drillsite

Images courtesy of Google Earth and Esri. All rights reserved. © 2014 Esri. All rights reserved.

**VICINITY MAP**

(RING HYDRO)  
**HELIS OIL & GAS COMPANY**  
**PROPOSED DRILLSITE & STRUCTURES**  
Eads Poitevent No. 1 Well  
Section 34, T7S - R12E  
St. Tammany Parish, Louisiana  
3/14/2014



E:\2014\231099\ENVIRONMENTAL\Workload Delineation\MXD

# Proposed Project Site

Helis Oil & Gas Co.  
Exploratory Well Pad



**BUILDING STRONG®**



## Oil & Gas Exploration In St. Tammany Parish

- **Project Description:** Clear, excavate and deposit fill for a road upgrade and 3.2-acre drill site to install a single vertical well for the purpose of collecting data from the Tuscaloosa Marine Shale Play to assess site viability for fossil fuel production.
- **Project Evaluation Milestones**
  - ▶ March 28, 2014: Application for a 10.35-acre HF production well complete.
  - ▶ April 14, 2014: Posted project on Joint Public Notice for 20 days.
  - ▶ May 26, 2014: JPN extended to June 16, 2014 (63-day total comment period).
  - ▶ July 29, 2014: Geological Review meeting. Based on information presented, LGS recommended site viability is first assessed via data collection from a vertical well on a reduced pad; agency concurrence is unanimous.
  - ▶ September 10, 2014: MVN received revised application proposing to install a single vertical well for the purpose of collecting data to determine site viability for fossil fuel production. The revised plan proposes direct impacts to  $\pm$  3.13 acres of wetlands managed for pine production.
- **Status**
  - ▶ Revised application incomplete, pending information clarification.
  - ▶ A JPN will be published when application is deemed complete.

