

# Appendix U

## WATER QUALITY CERTIFICATION

---



BOBBY JINDAL  
GOVERNOR



HAROLD LEGGETT, PH.D.  
SECRETARY

**State of Louisiana**  
DEPARTMENT OF ENVIRONMENTAL QUALITY  
ENVIRONMENTAL SERVICES

**JUN 24 2009**

U.S. Army Corps of Engineers- New Orleans District  
P.O. Box 60267  
New Orleans, LA 70160-0267

Attention: Sandra Stiles

RE: Water Quality Certification (WQC 090212-05/AI 105036/CER 20090002)  
Calcasieu River & Pass, Louisiana Dredged Material Management Plan  
Calcasieu and Cameron Parishes

Dear Ms. Stiles:

The Department has reviewed your modified request to dredge waterbottoms for navigation maintenance, to place spoil material beneficially for coastal marsh restoration, to construct and maintain new confined disposal facilities (CDF's) & to place additional spoil material in said CDF's for disposal purposes, along the Calcasieu Ship Channel between Lake Charles and Cameron, Louisiana. This modification includes the placement of additional of rip-rap between river miles 16 to 20 for erosion control.

The requirements for Water Quality Certification have been met in accordance with LAC 33:IX.1507.A-E. Based on the information provided in your application, we have determined that the placement of the fill material will not violate the water quality standards of Louisiana provided for under LAC 33:IX.Chapter 11. Therefore, the Department has issued a Water Quality Certification.

Sincerely,

A handwritten signature in black ink, appearing to read "T. F. Harris".

Thomas F. Harris  
Administrator  
Waste Permits Division

TFH/jjp





REPLY TO  
ATTENTION OF

**DEPARTMENT OF THE ARMY**  
NEW ORLEANS DISTRICT, CORPS OF ENGINEERS  
P.O. BOX 60267  
NEW ORLEANS, LOUISIANA 70160-0267

May 13, 2009

Planning Programs and  
Project Management Division  
Environmental Planning and  
Compliance Branch

Mr. Thomas Harris  
Louisiana Department of  
Environmental Quality  
Post Office Box 4313  
Baton Rouge, Louisiana 70821-4313

Dear Mr. Harris:

Please reference our letter dated February 6, 2009, requesting water quality certification for the Calcasieu River and Pass (CR&P), Louisiana, Dredged Material Management Plan and Supplemental Environmental Impact Statement; and a conference call on May 4, 2009, between Louisiana Department of Environmental Quality (DEQ) Waste Permits Division (Jamie Phillippe, Jason Meyers) and USACE Operations Division (Ed Creef, Jeff Corbino). As requested in the May 4 conference call, enclosed are tables comparing analyte concentrations from CR&P shoal material with RECAP Non-Industrial Screening Standards for soils (enclosure 1) and a map depicting sampling locations within the channel (enclosure 2).

Based on comparison to RECAP screening standards, we feel that shoal material from the CR&P is uncontaminated dredged material and therefore exempt from DEQ's Solid Waste Regulations. Please contact Jeff Corbino at (504) 862-1958 for any additional information or further clarification on the CR&P sediment evaluation.

Sincerely,

A handwritten signature in black ink, appearing to read "Richard E. Boe".

Richard E Boe  
Acting Chief, Environmental Planning &  
Compliance Branch

Enclosures





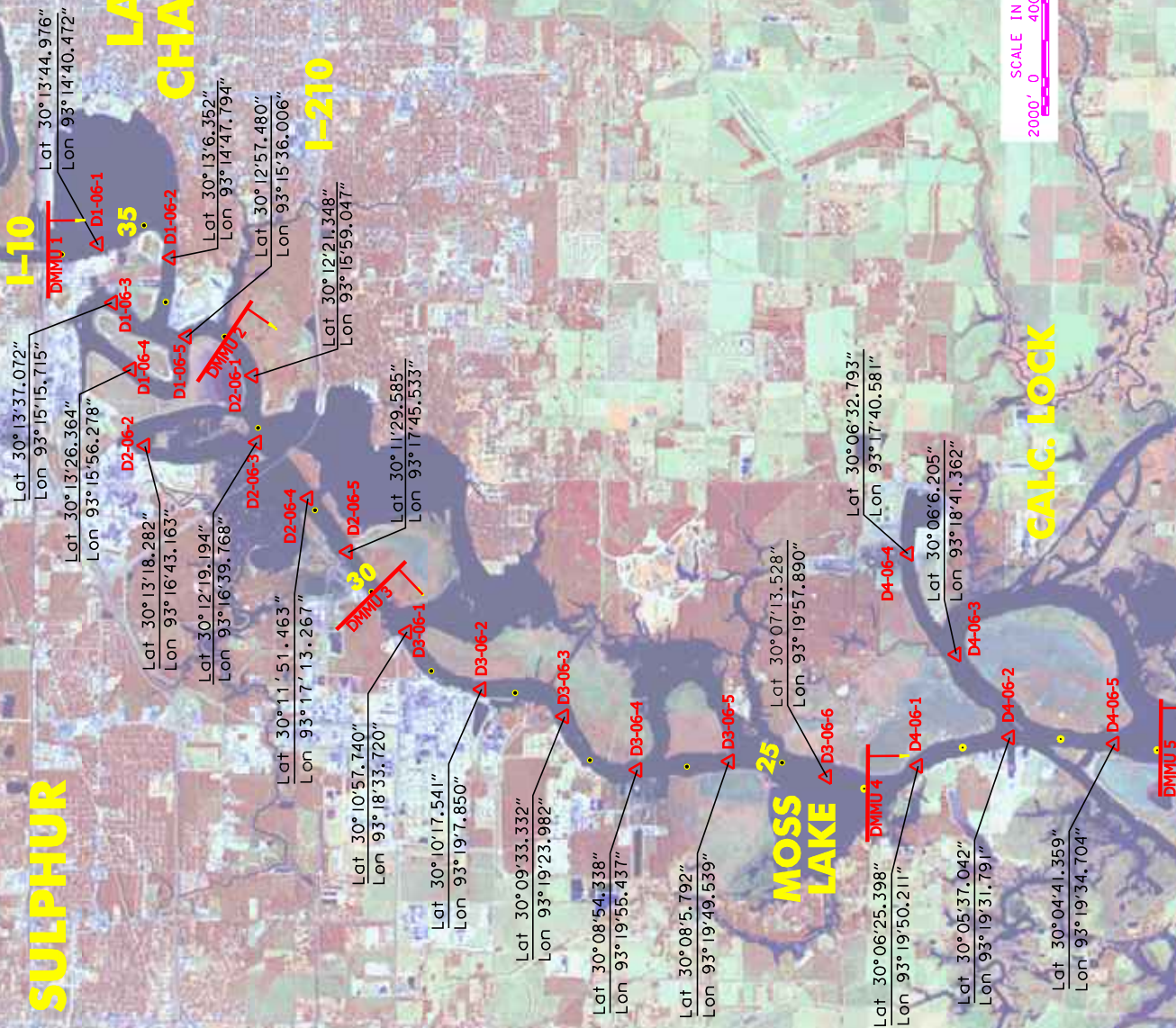
**SULPHUR**

**LAKE CHARLES**

**I-210**

**MOSS LAKE**

**GALC. LOCK**





# MOSS LAKE

Lat 30°07'13.528"  
Lon 93°19'57.890"

D3-06-6

Lat 30°06'25.398"  
Lon 93°19'50.211"

DMMU 4

D4-06-1

Lat 30°05'37.042"  
Lon 93°19'31.791"

D4-06-2

Lat 30°04'41.359"  
Lon 93°19'34.704"

D4-06-5

DMMU 5

D5-06-1

Lat 30°03'51.865"  
Lon 93°19'39.977"

20

Lat 30°02'59.669"  
Lon 93°19'43.852"

D5-06-2

Lat 30°02'5.521"  
Lon 93°19'48.135"

D5-06-3

D5-06-4

Lat 30°01'9.414"  
Lon 93°19'53.271"

D5-06-5

Lat 30°00'16.808"  
Lon 93°19'58.475"

DMMU 6

15

Lat 29°59'0.856"  
Lon 93°20'3.657"

D6-06-1

Lat 29°58'7.279"  
Lon 93°19'4.488"

CALCASIEU LAKE WETLAND  
CREATION DISPOSAL AREA

D6-06-2

Lat 29°57'21.894"  
Lon 93°20'12.396"

Lat 29°56'18.386"  
Lon 93°25'42.610"

SINWR WETLAND  
CREATION DISPOSAL AREA

D6-06-3

Lat 29°55'34.333"  
Lon 93°20'23.638"

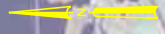
# CALC. LOCK

Lat 30°06'32.793"  
Lon 93°17'40.581"

D4-06-4

Lat 30°06'6.205"  
Lon 93°18'41.362"

D4-06-3



# G. I. W. W.





Lat 29°57'21.894"  
Lon 93°20'12.396"

D6-06-2

Lat 29°55'34.333"  
Lon 93°20'23.638"

D6-06-3

Lat 29°53'51.083"  
Lon 93°20'32.726"

D6-06-4

Lat 29°52'7.049"  
Lon 93°20'42.241"

D6-06-5

Lat 29°50'17.951"  
Lon 93°20'52.094"

D6-06-6

Lat 29°56'18.386"  
Lon 93°25'42.610"

SNWR WETLAND  
CREATION DISPOSAL AREA

Lat 29°51'40.504"  
Lon 93°25'46.601"

CALCASIEU LAKE WETLAND  
CREATION REFERENCE AREA

**CALCASIEU LAKE**

**CALCASIEU LAKE**

SCALE IN FEET  
2000' 0 4000 8000'





10  
Lat 30° 08' 37.072"  
Lon 93° 19' 13.715"

35  
Lat 30° 10' 13.44378"  
Lon 93° 18' 26.364"

20  
Lat 30° 12' 51.4601"  
Lon 93° 15' 30.908"

20  
Lat 30° 10' 57.740"  
Lon 93° 18' 33.720"

Lat 30° 10' 17.541"  
Lon 93° 19' 7.850"

25  
Lat 30° 08' 52.181"  
Lon 93° 19' 23.972"

Lat 30° 08' 52.181"  
Lon 93° 19' 53.414"

Lat 30° 08' 52.181"  
Lon 93° 19' 27.514"

MOSS LAKE

Lat 30° 06' 25.398"  
Lon 93° 19' 50.211"

Lat 30° 06' 32.793"  
Lon 93° 17' 40.581"

SCALE IN FEET  
2000' 0 4000' 8000'

**MOSS LAKE**

25

20

15

Lot 30°06'25.398"  
Lon 93°19'50.211"

Lot 30°06'32.793"  
Lon 93°17'40.581"

Lot 30°

SCALE IN FEET  
2000' 0 4000' 8000'

G. I. W.





CALCASIEU LAKE

CALCASIEU LAKE

SCALE IN FEET  
2000' 0 4000' 8000'

10

5

0





BOBBY JINDAL  
GOVERNOR

# State of Louisiana

ROBERT J. BARHAM  
SECRETARY

DEPARTMENT OF WILDLIFE AND FISHERIES  
OFFICE OF WILDLIFE

JIMMY L. ANTHONY  
ASSISTANT SECRETARY

March 6, 2009

Attn: Sandra Stiles  
Planning, Programs, and Project Management Division  
Environmental Planning and Compliance Branch  
United States Army Corps of Engineers  
P. O. Box 60267  
New Orleans, LA 70160-0267

RE: *Application: Dredged Material Management Plan and Supplemental Environmental Impact Statement, Calcasieu River and Pass, Louisiana*  
*Applicant: U.S. Army Corps of Engineers, New Orleans District*  
*Public Notice Date: February 9, 2009*

Dear Ms. Stiles:

The professional staff of the Louisiana Department of Wildlife and Fisheries (LDWF) has reviewed the above referenced Public Notice. Based upon this review, the following has been determined:

Although the proposed beneficial use of dredge material may be considered compensatory for adverse wetland impacts, justification for the conversion of 545 acres of marsh to uplands should be provided along with an alternative site analysis. The justification should clearly show if there is a real need to expand the CDF's within wetlands. If need can be established, actions must be taken to avoid and/or minimize adverse impacts to fish and wildlife resources.

Although LDWF staff have been briefed on plan formulation and WVA evaluations, we believe that dredged material should be used beneficially to the maximum extent possible.

The Louisiana Department of Wildlife and Fisheries appreciates the opportunity to review and provide recommendations to you regarding this proposed activity. Please do not hesitate to contact Habitat Section biologist Matthew Weigel at 225-763-3587 should you need further assistance.

Sincerely,

Kyle F. Balkum  
Biologist Program Manager

mw

c: Matthew Weigel, Biologist

*Check to see if this meets*



## **Stiles, Sandra E MVN**

---

**From:** Keeler.Barbara@epamail.epa.gov  
**Sent:** Monday, March 09, 2009 1:46 PM  
**To:** Stiles, Sandra E MVN  
**Subject:** Calcasieu DMMP

Sandra Stiles:

As we discussed by telephone today, please note the following input from EPA Region 6 regarding the Public Notice for the Dredged Material Plan and Supplemental Environmental Impact Statement for the Calcasieu River and Pass, Louisiana.

The recommended Plan B includes a mix of upland confined disposal facilities (CDFs) and beneficial use placement and is the National Economic Development plan. It is our understanding that Plan B now excludes the planned expansion of the CDFs along the Calcasieu River reaches (CDFs 9, 10, 11, and 13). This is definitely a step in the right direction, which, in our opinion, is to maximize beneficial use of the dredged material and minimize use of CDFs for the disposal of material that would be suitable for marsh restoration. Since both Plans B and C are similar in economic expenditures, it would seem that there is an opportunity to move toward greater use of the dredged material for beneficial use purposes as a part of this project. Toward that end, we look forward to hearing more about additional beneficial use opportunities in the West Black Lake/Marcantel area, as a result of the State's dedication of Coastal Restoration and Restoration Fund resources.

If you have any questions about these comments, please let me know.

Barbara Keeler  
Coastal & Wetlands Planning Coordinator  
EPA Region 6 (6WQ-EC)  
1445 Ross Ave., Suite 1200  
Dallas, TX 75202-2733  
tel: 214-665-6698  
fax: 214-665-6689  
e-mail: keeler.barbara@epa.gov







REPLY TO  
ATTENTION OF

**DEPARTMENT OF THE ARMY**  
NEW ORLEANS DISTRICT, CORPS OF ENGINEERS  
P. O. BOX 60267  
NEW ORLEANS, LOUISIANA 70160-0267

February 6, 2009

Planning Programs and  
Project Management Division  
Environmental Planning and  
Compliance Branch

Thomas F. Harris  
Louisiana Department of Environmental Quality  
Waste Permits Division  
P.O. Box 4313  
Baton Rouge, LA 70821-4313

Dear Mr. Harris:

The US Army Corps of Engineers, New Orleans District requests water quality certification for Calcasieu River and Pass, Louisiana Dredged Material Management Plan and Supplemental Environmental Impact Statement (DMMP/SEIS). The authority for this study is the River and Harbor Act of 1946, Public Law 79-525, July 24, 1946 which authorized the Lake Charles Deep Water Channel and Calcasieu River and Pass in accordance with Senate Document No. 190; the River and Harbor Act of 1960, Public Law 86-645, July 14, 1960; the River and Harbor Act of October 23, 1962; Section 201 of the Flood Control Act of 1965 (Public Law 89-298) and the River and Harbor Act of 1960, Section 107 as amended by Section 310 and Section 112 of the River and Harbor Acts of 1965 and 1970 respectively.

The tentative selected plan is the placement of shoal material in existing confined disposal facilities and beneficial use sites with CDF capacity maximized from channel mile 12 to 21. This alternative involves construction of rock bank protection features, the expansion of existing upland confined disposal areas, and the designation of new disposal areas for the beneficial use placement of shoal material removed during essential maintenance dredging of the Federal navigation project, Calcasieu River and Pass, Louisiana. Project information is provided in the enclosed public notice (enclosure 1). A Corps of Engineers 404 Permit application is provided as enclosure 2.

## Contaminants

This resource is institutionally significant because of the Clean Water Act of 1977, as amended. Water quality is publically significant because of the desire of the public for recreational fishing and boating.

In recent history the Calcasieu River has had a number of significant water quality problems. The seasonal low flows in this basin, coupled with the large number of point and nonpoint source discharges, have resulted in a water quality classification of "limited" by the state in portions of the river. This classification indicates that even under conditions of compliance with all Federal effluent limitations, water bodies in the basin would not meet state water quality standards. Sources of pollutants include industrial and municipal discharges, and agricultural and urban runoff. The segment of the Calcasieu River from just above mile 27 (Moss Lake) to mile 44 (Calcasieu Saltwater Barrier north of Lake Charles) has approximately 17 industrial, four municipal, and two water treatment plant discharges contributing to water quality degradation in the area. State water quality standards for dissolved oxygen, pH, bacteria, oil and grease, and temperature have been frequently exceeded. In addition, taste and odor problems have been noted.

In December of 2006, water samples were collected from one wetland area within the Sabine National Wildlife Refuge (SNWR) and two areas in Calcasieu Lake. These reference areas are within the vicinity of the proposed disposal areas, and water quality at the reference sites is expected to typify water quality at the proposed disposal areas. Ambient water from the SNWR and Calcasieu Lake was analyzed for the presence of 133 analytes. Detected analytes included metals (arsenic, barium, chromium, hexavalent chromium, copper, nickel, selenium, and zinc), pesticides (4,4'-DDT, alpha-BHC, alpha-chlordane, beta-BHC, endrin, and heptachlor epoxide), and ammonia. Concentrations of the detected analytes were compared to Federal and state *Water Quality Criteria* (WQC). All detected analytes from the SNWR were below available WQC. Copper was the only analyte from Calcasieu Lake that exceeded WQC, and was detected at concentrations about two-times higher than its criterion. Barium, chromium, alpha-BHC, and beta-BHC do not have applicable WQC.

Concurrent with the 2006 sampling of ambient water from the SNWR and Calcasieu Lake, water and sediment from the Calcasieu River were collected from three river segments near the proposed disposal sites. Five sediment samples and a single water sample were collected from miles 24 to 21 (including Devil's Elbow); five sediment samples and a single water sample were collected from miles 21 to 16; and six sediment samples and a single water sample from miles 16 to 5. Sediment and water from each river segment were combined to produce a typical "dredging elutriate", representative of the dredged material slurry that would be discharged at the proposed disposal sites. Eight analytes were common to elutriates from the three river segments, including ammonia, arsenic, barium, chromium, copper, nickel, selenium, and zinc. Gasoline range organics (GRO) were detected in the mile 21 to 16 reach and the mile 16 to 5 reach.

While state and Federal WQC are not directly applicable to elutriate chemistry, it may be assumed that analytes detected in an elutriate at concentrations below acute WQC are not expected to adversely impact receiving waters adjacent to a dredged material disposal area. Of the nine analytes, only ammonia and copper exceeded acute WQC. Ammonia was an order of magnitude greater in the elutriates (3,500 to 9,300 ppb) than ambient waters of Calcasieu Lake and the SNWR (200 to 210 ppb). The concentration of copper in the river segments (6.3 to 6.8 ppb) was comparable to concentrations observed in ambient waters of Calcasieu Lake (6.0 ppb). Barium, chromium, and GRO do not have applicable WQC.

While elevated levels of ammonia are common in anaerobic sediments underlying Louisiana's estuaries and waterways, ammonia is rapidly oxidized when exposed to oxygenated surface waters. Special management of dredged material within a disposal area can facilitate the rapid oxidation of ammonia prior to the release of effluent into adjacent receiving waters. Special management practices include, but are not limited to: 1) attachment of a baffle plate to the end of the discharge pipeline to thoroughly expose elutriates to oxygen prior to placement in a disposal area; 2) construction of interior dikes to route elutriates within a disposal area, thereby increasing retention time; and 3) routing effluent across vegetated wetlands within the disposal area prior to discharge into adjacent receiving waters. Due to elevated levels of ammonia in elutriates from the river segments, special management practices similar to those described above would be employed during dredged material disposal operations to dissipate ammonia within the proposed disposal areas. The concentration of ammonia would be sufficiently reduced prior to the discharge of effluent from the proposed disposal areas, and water quality in the adjacent waters would not be adversely impacted.

The concentration of copper in elutriates from the river segments ranged between 6.3 and 6.8 ppb, and exceeded the Louisiana Department of Environmental Quality (LDEQ) acute WQC for marine waters (3.63 ppb). Copper in receiving waters of Calcasieu Lake (6.0 ppb) and the Calcasieu River (6.2 to 7.4 ppb) also exceeded acute WQC and concentrations therein were similar to concentrations observed in the elutriates. Copper was not detected in waters of the SNWR (< 2.0 ppb). Dilution factors were determined for copper, with dilution to within 5% of background levels observed in Calcasieu Lake and Calcasieu River, and to WQC in the SNWR. The CORMIX model was used to predict the size of mixing zones that would be required for the dilution of copper in effluent from the river segments to specified dilution endpoints. Mixing zones extending from disposal areas 7 to 60 feet into Calcasieu Lake, 7 to 33 feet into the Calcasieu River, and 7 to 39 feet into the SNWR would provide sufficient dilution of copper in effluent from the river segments.

For coastal lakes and bays, including the open waters of Calcasieu Lake and the SNWR, LDEQ requires that dilution of effluent to WQC or approximate background levels occur within 200 feet of a dredged material disposal area. For tidal channels with flows greater than 100 cubic feet per second, such as the Calcasieu River, mixing zones may not exceed one third of the channels ambient flow. Considering an approximate width of 900', approximate depth of 42', and a mean low tidal velocity of 0.79 feet/second, the regulatory mixing zone for the Calcasieu River is approximately 9,944 feet. Predicted mixing zones required for sufficient dilution of copper are no greater than 60 feet for Calcasieu Lake, 33 feet for Calcasieu River, and 39 feet for

SNWR. The predicted mixing zones are well within LDEQ's regulatory mixing zones, and the discharge of dredged material into the proposed disposal areas therefore would have little effect on water quality in adjacent receiving waters.

The discharge of dredged material from the Calcasieu River into the proposed disposal areas is not expected to adversely impact adjacent receiving waters. Analytes detected in dredging elutriates were either below applicable state WQC, would be dissipated through special management within the disposal area, or would be sufficiently diluted prior to discharge of effluent into adjacent receiving waters. Placement of dredged material in the proposed disposal areas is therefore not expected to adversely impact water quality.

### Best Management Practices

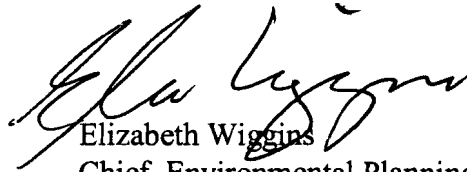
Best Management Practices will be implemented to reduce potential detrimental effects on water quality caused by non-point source pollution resulting from these disposal and rock placement activities. Dredged material would be discharged into confined shallow open water areas of eroded marsh and into existing upland confined disposal areas. Containment levees, both existing and newly constructed, surrounding the proposed and existing disposal sites would prevent dredged material from entering adjacent waterways and properties that have not been designated for the receipt of dredged material. Where existing natural ridges, waterway bankline levees, petroleum industry canal levees, or upland confined disposal area retention dikes are insufficient to prevent dredged material from exiting the designated disposal areas, retention features and/or closures would be constructed as necessary to prevent dredged material from entering adjacent waterways and properties following discharge into the designated disposal areas. Earthen material used to construct these retention features and/or closures would be obtained from within the designated disposal areas. It is anticipated that the marsh restoration dredged material placement areas either will vegetate naturally through colonization from adjacent marsh plants, or be planted with an array of selected wetlands plant species. Rock would be placed along channel and lake side boundaries of several existing upland confined disposal areas to prevent the occurrence of wave-induced erosion.

Best Management Practices will be implemented to reduce potential detrimental effects on water quality caused by non-point source pollution resulting from flotation access corridor construction activities. Flotation access channel dredged material would be stockpiled on shallow open water bottom adjacent to the flotation access channel, placed on existing/remnant bayou and canal levees, or placed in the designated disposal areas. No flotation access channel material would be placed on existing marsh. Stockpiled material either would be used to backfill flotation access channels, or, if placed on existing/remnant bayou and canal levees, be left in place to rebuild these features if such an action is deemed appropriate. Stockpiled sediments would experience only temporary exposure between flotation access channel excavation and backfilling activities during this work.



The draft DMMP/SEIS is anticipated to be released for public comment around late March 2009. Please contact Ms. Sandra Stiles of this office at (504)862-1583 or email [Sandra.E.Stiles@usace.army.mil](mailto:Sandra.E.Stiles@usace.army.mil) if you have questions or require additional information.

Sincerely,

A handwritten signature in black ink, appearing to read "Elizabeth Wiggins". The signature is fluid and cursive, with a large initial "E" and "W".

Elizabeth Wiggins  
Chief, Environmental Planning &  
Compliance Branch

Enclosures





DEPARTMENT OF THE ARMY  
NEW ORLEANS DISTRICT, CORPS OF ENGINEERS  
P. O. BOX 60267  
NEW ORLEANS, LOUISIANA 70160-0267  
February 9, 2009

REPLY TO ATTENTION OF:

Planning, Programs and  
Project Management Division  
Environmental Planning and  
Compliance Branch

**PUBLIC NOTICE**

Dredged Material Management Plan and Supplemental Environmental Impact Statement  
Calcasieu River and Pass, Louisiana

**INTRODUCTION:** This Public Notice is issued in accordance with provisions of Title 33 CFR Parts 336.1(b)(1) and 337.1, which established policy, practices, and procedures to follow on federal actions involving the disposal of dredged or fill material into waters of the United States.

Interested parties are hereby notified that the US Army Engineer District, New Orleans (CEMNVN), proposes to expand existing upland confined disposal facilities (CDFs) for placement of dredged material removed during routine maintenance events, designate additional beneficial use disposal areas to restore areas of subsided marsh, and construct rock bankline protection features necessary to maintain the Calcasieu River and Pass (CR&P), Louisiana, Federal navigational project, for a period of at least 20 years (Figures 1 and 2).

Designation and subsequent use of the proposed disposal areas involves the discharge of dredged material and fill into waters of the U.S. Therefore, the provisions of Title 33 CFR, Part 336, effective April 26, 1988, are applicable and issuance of this public notice is required.

**PROJECT AUTHORITY:** Construction and maintenance of the CR&P navigation channel was authorized by the Rivers and Harbors Act of July 24, 1946, House Document 190, 79<sup>th</sup> Congress, 2<sup>nd</sup> Session and prior Rivers and Harbors Acts, which provides for a channel 35 feet deep and 250 feet wide from the wharves of the Lake Charles Harbor and Terminal District (including the Loop around Clooney Island) to the Gulf of Mexico, via Calcasieu Lake and through Calcasieu Pass, a channel 35-37 feet deep and 250 feet wide between the jetties, and an approach channel 37 feet deep and 400 feet wide seaward to the 37-foot depth contour in the Gulf of Mexico. This Act also provides for reconstruction and extension of improvement of the river from Lake Charles to Phillips Bluff by removing logs, snags, overhanging trees and dredging.

The Rivers and Harbors Act of July 14, 1960, House Document 436, 86<sup>th</sup> Congress, 2<sup>nd</sup> Session provides for an approach channel having a depth of 42 feet below Mean Low Gulf (MLG) level over a bottom width of 800 feet from the 42 foot depth in the Gulf of Mexico to the jettied

channel; a channel between the end and shoreline, respectively, over a bottom width of 400 feet; a channel 40 feet deep over a bottom width of 400 feet from the shoreline at Mile 0.0 to the wharves of the Port of Lake Charles at Mile 34.1; enlargement of the existing turning basin at Mile 29.6 to a depth of 40 feet; and a mooring basin at about Mile 3.0 having a width of 350 feet, a length of 2000 feet, and a depth of 40 feet; extension of the ship bottom width of 250 feet below MLG over a bottom width of 250 feet from the wharves of the Port of Lake Charles, Mile 34.1 to the vicinity of the bridge on U.S. Highway 90, Mile 36.0, and a turning basin of the same depth at the upper end having a width of 750 feet and a length of 1000 feet; and maintenance of the existing channel 12 feet deep and 200 feet wide from the ship channel to Cameron, Louisiana, via the old channel of the Calcasieu River.

The Rivers and Harbors Act of October 23, 1962, House Document 582, 87<sup>th</sup> Congress, 2<sup>nd</sup> Session provides for a salt water barrier structure with five 40-foot tainter gates in a new bypass channel; a parallel channel with navigation structure and a single sector type gate, an earth closure dam, and a woven lumber type revetment.

The Senate Public Works committee on December 27, 1970, and the House Public Works committee on December 15, 1970, adopted resolutions approving the project at Devil's Elbow under the provisions of Section 201 of the Flood Control Act of 1965 (Public Law 89-298; S.D. 91-111) which consists of enlarging 2.3 miles of the existing industrial channel to a 40-foot depth over a bottom width of 400 feet, a ½ mile eastward extension of the enlarged channel, and the construction of a 1200-foot by 1400-foot turning basin south of the extended channel at its landward end.

The Calcasieu River at Coon Island, Louisiana project was authorized under Section 107 of the Rivers and Harbors Act of 1960, as amended by Section 310 and Section 112 of the Rivers and Harbors Acts of 1965 and 1979, respectively. The project consists of deepening and widening to -40 feet by 200 feet for a distance of 6,943 feet, and the existing turning basin to -40 feet by 750 feet by 1000 feet.

PROJECT LOCATION: The proposed action is located in Cameron and Calcasieu Parishes, Louisiana

PROJECT PURPOSE: The CR&P project does not have adequate dredged material disposal capacity needed to maintain the channel to authorized dimensions. Existing discharge sites are at or near capacity, and past maintenance deficiencies have resulted in substantial erosion of discharge facilities. Other discharge sites have been lost to commercial development. Previous real estate agreements, which have enabled landowners to opt out of agreements for disposal, have resulted in some landowners rescinding permissions for their property to be used for the placement of dredged material. As a result, remaining discharge areas cannot accommodate the volume of dredged material needed to maintain the ship channel to project-authorized dimensions.

PROPOSED ACTION: The proposed action would include expansion of existing upland CDFs for placement of dredged material removed from the Calcasieu Ship Channel during routine



maintenance events, the designation of additional beneficial use disposal areas to restore areas of subsided marsh, and the construction of rock bankline protection features (Figures 1 and 2).

*Confined Disposal Facilities:* A CDF is an area bound by dikes or structures engineered to contain dredged material. Dredged material is placed into the CDF either hydraulically or mechanically, where it is allowed to drain, dry, and consolidate. Effluent resulting from the settling of solids is discharged across weirs into adjacent waters (effluent is discharged from all CR&P CDFs back into the channel).

The proposed action would include the expansion of existing CDFs 9, 10, 11, and 13 into adjacent wetlands and/or open water along the CR&P between river miles 28 and 21. CDFs 17, 19, D, and E would be expanded into Calcasieu Lake to the approximate limits depicted in the 1976 CR&P Environmental Impact Statement. Extending lakeward from reconfigured CDFs D and E, dredged material would be placed in Calcasieu Lake to the approximately 3-foot depth contour to create intertidal marsh. The approximate size and dredged material capacity of the CDFs is listed in Tables 1 and 2.

To provide erosion protection from ship wakes and waves, rock would be placed along the channel and lake boundaries of CDFs 17, 19, 22, and 23; and at the eastern edge of the created marsh of CDFs D and E. Rock dikes constructed along the perimeter of CDFs 17 and 19, and along the lake boundary of CDFs D and E would also serve as containment features for dredged material. Note that foreshore rock dikes have previously been constructed along the channel boundary of CDFs D and E. The Texaco Cut near river mile 18 would remain open and would be armored on its north and south banks into Calcasieu Lake. Additional rock armoring would be constructed along the right-descending bank of the ship channel between approximate miles 18.7 to 16.5 to preserve the integrity of the bankline and reduce maintenance dredging requirements. Figure 2 depicts the location of rock placement sites. About 8.4 million cubic yards of stone is required to construct the erosion protection and containment features.

*Beneficial Use:* About 36 million cubic yards of dredged material removed from the CR&P would be used beneficially for shoreline stabilization, land reclamation, and marsh creation. A hydraulic dredge would be used to remove shoal material from the channel and transport dredged material via a pipeline into confined, semi-confined, or unconfined disposal areas. Dredged material slurry would be discharged into shallow open-water areas to an elevation conducive to the development of wetland habitats following dewatering and compaction. It is anticipated that the final result of this dredged material placement would be a combination of emergent wetland, mud flat, and shallow open water habitat within the placement site. Dredged material slurry would be allowed to overflow existing emergent marsh vegetation within the proposed disposal area, but would not be allowed to exceed a height of about one-foot above the existing marsh elevation. Proposed beneficial use disposal areas are shown in Figures 1 and 2, with approximate acreages and disposal capacity detailed in Tables 1 and 3.

In conjunction with the discharge activities, retention dikes, deflection dikes, and/or closures may be required to prevent the flow of dredged material back into adjacent waterways and properties. Earth, rock, aggregate, shell, geotubes, sheetpile, hay bales or a combination of these materials

would be used to construct or refurbish dikes and closure structures. Interior low-level earthen weirs also may be constructed within discharge areas to facilitate the deposition of sediments in a manner that would enhance wetlands development. Borrow material for dike/closure/weir construction would be taken from within the disposal areas. Earthen structures would be allowed to degrade naturally or would be mechanically degraded as necessary to provide fisheries access and tidal ingress/egress following appropriate settlement of dredged material placed within the disposal areas.

In addition to dredged material containment features, elements that may be constructed in association with the placement of material for beneficial use include:

- Access Corridors. Construction access corridors from the ship channel to beneficial use sites would be a maximum of about 200 feet in width and would cross over uplands, wetlands, and shallow open water as necessary. Access corridors also may occur across or along the crown of existing levees in the project vicinity.

Levees surrounding beneficial use sites would be degraded as necessary to provide access to disposal sites. Degraded levees may be rebuilt following completion of discharge activities. Degraded levee material would be stockpiled in shallow open-water adjacent to the degraded levee section or on adjacent levees. Degraded levee sections would be rebuilt with material degraded from the levee or excavated from adjacent shallow open-water areas. Material placed in shallow open-water not utilized to rebuild levees would be degraded, if necessary, to a height conducive to wetlands development.

- Flotation Access Channels. Flotation channels would be excavated as needed in shallow open water areas to allow construction equipment to access disposal sites. If necessary, flotation channels would be excavated by a mechanical dredge to maximum dimensions of approximately 80 feet wide and 10 feet deep. Flotation channel material would be used for the construction or refurbishment of dikes and closures; temporarily stockpiled adjacent to the access channel and later used to backfill the channel; or would be placed adjacent to and behind dikes and closures for wetlands development.

If existing canals are used for access, they may be dredged to facilitate flotation of pipelines and other necessary equipment from the dredging site on the ship channel to pipeline discharge sites within the beneficial use disposal areas. Dredged material removed from existing canals would be placed on adjacent levees and/or into shallow open water on either side of the canals. Canal dredged material placed in shallow open water areas would be placed to a height conducive for wetlands development.

DISPOSAL AREAS: The proposed disposal sites for the expansion of CDFs 9, 10, 11, and 13 are located in marsh and shallow open-water along the CR&P between river miles 28 and 21. Expansion sites for CDFs 17, 19, D, and E are bordered to the west by the left-descending bank of the CR&P between approximate miles 20 and 12, and to the east by Calcasieu Lake. Dredged material would be placed into about 545 acres of marsh and about 511 acres of shallow open-waters of the channel and lake, converting these areas to uplands. An additional 476 acres of shallow open-water in Calcasieu Lake would be filled to intertidal marsh elevation after placement of dredged material into the lake side of CDFs D and E. Rock would be placed on

about 32 acres of shallow open-water in the channel (left-descending bank) and about 48 acres of shallow lake bottom to construct shoreline protection features associated with the CDFs. An additional 13 acres of shallow open-water along the right-descending bank of the channel between approximate river miles 18.7 and 16.5 would be impacted by the construction of rock shoreline protection features.

The proposed beneficial use disposal areas located west of the CR&P are bordered by shallow open-water and fragmented marsh of black lake and the Sabine National Wildlife Refuge (SNWR). Beneficial use disposal areas east of the CR&P are bordered by shallow open-waters of Calcasieu Lake and fragmented marsh within the Cameron Prairie National Wildlife Refuge (CPNWR). Dredged material slurry would be discharged into shallow open-water within the beneficial use disposal areas to an elevation conducive to the development of wetland habitats. It is anticipated that the final result of this dredged material placement would be a combination of emergent wetland, mud flat, and shallow open water habitat within the placement site. Dredged material slurry would be allowed to overflow existing emergent marsh vegetation within the proposed disposal areas, but would not be allowed to exceed a height of about one-foot above the existing marsh elevation. Dredged material placement and associated retention features would impact about 890 acres in Black Lake; approximately 5,600 acres within the SNWR; about 640 acres immediately adjacent to the SNWR; and about 2,900 acres in the CPNWR. Over 10,000 acres of wetland habitat would be created or nourished from the proposed beneficial use of dredged material. Prior to the development of project plans, it is impossible to determine the area that would be impacted temporarily or converted to marsh elevation during the construction of access channels outside of these disposal areas.

METHODS OF DISCHARGE: A hydraulic cutterhead pipeline dredge would be used to remove shoal material from the CR&P during maintenance dredging events and to discharge the dredged material into CDFs and confined, semi-confined, or unconfined shallow open-water areas at the beneficial use sites for wetlands development. A barge mounted bucket dredge and dragline would be used to perform work associated with flotation access channel excavation, access corridor construction, dike/closure construction, and shoreline protection rock features. Land-based construction activities within CDFs or across access corridors that are inaccessible by barge would be performed by dump trucks, bulldozers, and similar construction equipment.

PROPERTY ADJACENT TO THE DISPOSAL AREA: Property adjacent to the project includes Devil's Elbow, the GIWW, Black Lake, petroleum industry canals, industrial facilities, recreational and residential properties, brackish marsh and open waters of the SNWR, Calcasieu Lake, and the CPNWR.

QUANTITIES AND FREQUENCIES: Approximately 3.6 million cubic yards of dredged material removed from the CR&P between miles 30 and 22 would be discharged into CDFs 9, 10, and 11 during maintenance events scheduled for years 8, 2, and 0 (respectively). About 2.6 million cubic yards of shoal material removed from Devil's Elbow would be discharged into CDF 13 during maintenance scheduled for year 0. About 10 million cubic yards of dredged material removed between CR&P miles 20 and 16 would be placed into the expanded uplands of CDFs 17, 19, D, and E during channel maintenance scheduled for years 6 and 9. An additional

4.1 million cubic yards of shoal material removed from the CR&P mile 20 to 16 reach would be placed in CDFs D and E to create intertidal marsh during maintenance scheduled in years 10, 12, 15, and 17. About 8.4 million cubic yards of rock would be used to construct foreshore dikes and shoreline armoring features associated with CDFs 17, 19, 22, 23, D, and E and along the left-descending bank of the channel between miles 18.7 and 16.5. Rock features would be constructed along the CR&P between years 6 and 8; rock work in Calcasieu Lake would occur in years 6, 9, and 14.

In addition to intertidal marsh creation sites in Calcasieu Lake associated with CDFs D and E, six beneficial use areas are proposed as disposal sites for maintenance of the CR&P between miles 16 and 5. Dredged material from maintenance between miles 16 and 12 would be placed in an area near Black Lake and an area within the SNWR (site 5): approximately 7.2 million cubic yards would be placed at the Black Lake site during years 0, 2, 5, 12, and 17; and about 8.9 million cubic yards would be placed at the SNWR site during years 0, 2, 5, and 7. Dredged material from maintenance between miles 12 and 9.5 would be placed in an area within the SNWR (site 18) and an area immediately adjacent to the SNWR (site 49): about 9.3 million cubic yards would be placed within the SNWR in years 0, 6, 9, 12, 15, and 18; and about 2.4 million cubic yards would be placed at the site adjacent to the SNWR in years 3, 6, and 9. Dredged material from maintenance between miles 9.5 and 5 would be placed at two areas within the CPNWR (sites 19 and 20): approximately 2.9 million cubic yards would be placed at site 19 in years 6 and 12; and about 1.2 million cubic yards would be placed at site 20 in year 2. It is impossible to determine the quantity of material required to construct or refurbish dikes and closures within these disposal areas or the frequency in which these features would need to be refurbished after initial discharges. The need to construct access channels and the quantity of material removed during construction would be determined prior to channel maintenance events – it is impossible to determine these quantities and frequencies prior to the development of individual project plans and specifications.

DREDGING BY OTHERS: No accurate estimate can be given to the amounts and/or frequency of dredging required to maintain non-Federal facilities in the vicinity of this project.

EVALUATION FACTORS: The decision whether to designate the proposed areas for the placement of dredged material from routine maintenance of the CR&P and associated features necessary for disposal will be based on an evaluation of the probable impact including cumulative impacts of the proposed activities on the public interest. That decision will reflect the national concern for both protection and utilization of important resources. The benefit which reasonably may be expected to accrue from the proposal must be balanced against its reasonably foreseeable detriments. All factors which may be relevant to the proposal will be considered; among those are conservation, economics, aesthetics, general environmental concerns, wetlands, historic properties, fish and wildlife values, flood hazards, floodplain values, land use, navigation, shoreline erosion and accretion, recreation, water supply and conservation, water quality, energy needs, safety, food and fiber production, mineral needs, considerations of property ownership and, in general, the needs and welfare of the people.

NATIONAL ENVIRONMENTAL POLICY ACT (NEPA) COMPLIANCE: An

Environmental Impact Statement addressing impacts of the proposed expansion of existing upland CDFs for placement of dredged material removed from the CR&P during routine maintenance events, the designation of additional beneficial use disposal areas to restore areas of subsided marsh, and the construction of rock bankline protection features is being prepared by CEMVN. The Draft SEIS is expected to be released for the 45-day public comment period in late March 2009. Environmental compliance for the proposed action would be achieved upon: coordination of Draft SEIS with appropriate agencies, organizations, and individuals for their review and comments; U.S. Fish and Wildlife Service (USFWS) and National Marine Fisheries Service (NMFS) confirmation that the proposed action would not be likely to adversely affect any endangered or threatened species; Louisiana Department of Natural Resources concurrence with the determination that the proposed action is consistent, to the maximum extent practicable, with the Louisiana Coastal Resources Program; receipt of a Water Quality Certificate from the State of Louisiana; public review of the Section 404(b)(1) Public Notice; signature of the Section 404(b)(1) Evaluation; receipt of the Louisiana State Historic Preservation Officer Determination of No Affect on cultural resources; receipt and acceptance or resolution of all USFWS Fish and Wildlife Coordination Act recommendations; receipt and acceptance or resolution of all Louisiana Department of Environmental Quality comments on the air quality impact analysis documented in the EA; and receipt and acceptance or resolution of all NMFS Essential Fish Habitat recommendations. The draft FONSI would not be signed until the proposed action achieves environmental compliance with applicable laws and regulations, as described above.

STATE WATER QUALITY CERTIFICATION: Section 401 of the Clean Water Act necessitates state water quality certification for the proposed activities. Application for certification was submitted by the CEMVN on February 6, 2009 to the Louisiana Department of Environmental Quality (LDEQ) in accordance with statutory authority contained in LRS: 30:2074 A(3) and provisions of Section 401 of the Clean Water Act, (P.L. 92-500, as amended).

SECTION 404(B)(1) GUIDELINES: Designation of the proposed sites for the placement of the dredged material and fill associated with routine maintenance of the CR&P will be made through the application of guidelines promulgated by the Administrator, Environmental Protection Agency, in conjunction with the Secretary of the Army. If these guidelines alone prohibit the designation of the disposal areas, any potential impairment to the maintenance of navigation and anchorage which would result from the failure to use these disposal areas also will be considered.

COASTAL ZONE CONSISTENCY DETERMINATION: The CEMVN provided the Office of Coastal Restoration and Management Division, Louisiana Department of Natural Resources, a consistency determination for the proposed activities dated January 16, 2009. The Corps determined that the proposed action is consistent, to the maximum extent practicable, with the State of Louisiana's approved Coastal Resources Program.

ENDANGERED SPECIES: The CEMVN has consulted with the United States Fish and Wildlife Service. The USFWS by letter dated November 13, 2007, concurred with the Corps determination that the recommended plan is not likely to adversely affect the brown pelican and the piping plover or its critical habitat. .

ESSENTIAL FISH HABITAT: The initial determination is that the proposed action will not have a substantial impact on Essential Fish Habitat or federally managed species in the Gulf of Mexico. The NEPA document described assesses the impacts of the proposed action on Essential Fish Habitat and includes the required components of 50 CFR 600.920(g). The final determination relative to impacts and the need for mitigation measures is subject to review by the National Marine Fisheries Service.

CULTURAL RESOURCES: A cultural resources survey has been conducted for the proposed action. The CEMVN has consulted with the Louisiana State Historic Preservation Officer to assess the potential effects of the proposed activities on cultural resources. By letter dated October 5, 2007, SHPO stated that they had no objections to the implementation of the proposed project from a Section 106 compliance standpoint.

COORDINATION: The following is a partial list of agencies to which a copy of this notice is being sent for coordination purposes:

Region VI, Environmental Protection Agency  
Regional Director, National Marine Fisheries Service  
Regional Director, U.S. Fish and Wildlife Service  
Commander, Eighth Coast Guard District  
Louisiana Department of Wildlife and Fisheries  
Louisiana Department of Environmental Quality  
Louisiana Department of Natural Resources  
Louisiana Department of Transportation and Development  
Louisiana State Historic Preservation Officer

PROJECT PLANS: Plans for the proposed work are on file in the Office of the District Engineer, U.S. Army Engineer District, New Orleans, Foot of Prytania Street, New Orleans, Louisiana 70160-0267, and may be seen by anyone having an interest in them.

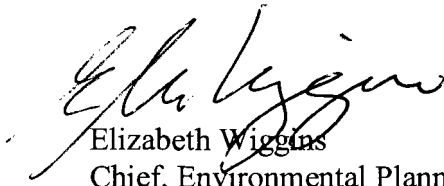
EVALUATION FACTORS: Evaluation includes application of the Section 404(b)(1) guidelines promulgated by the Administrator of the U.S. Environmental Protection Agency, through 40 CFR 230.

PUBLIC INVOLVEMENT: Interested persons may submit comments on the proposed work or suggest modifications. All comments received within 30 days of the date of this notice will be considered. Any person who has an interest which may be affected by the proposed work may request a public hearing. The request must be submitted in writing to the District Engineer within the comment period of this notice, and must clearly set forth the interest which may be affected and the manner in which the interest may be affected by this activity. You are requested to communicate the information contained in this public notice to any parties who may have an interest in the proposed maintenance work.

INFORMATION: Additional information concerning the proposed work can be obtained by



writing to: District Engineer, U.S. Army Engineer District, New Orleans, ATTN: CEMVN-PM-  
RS / Ms. Sandra E Stiles, Post Office Box 60267, New Orleans, Louisiana 70160-0267.  
Ms. Stiles also can be reached at (504) 862-1583.



Elizabeth Wiggins  
Chief, Environmental Planning &  
Compliance Branch



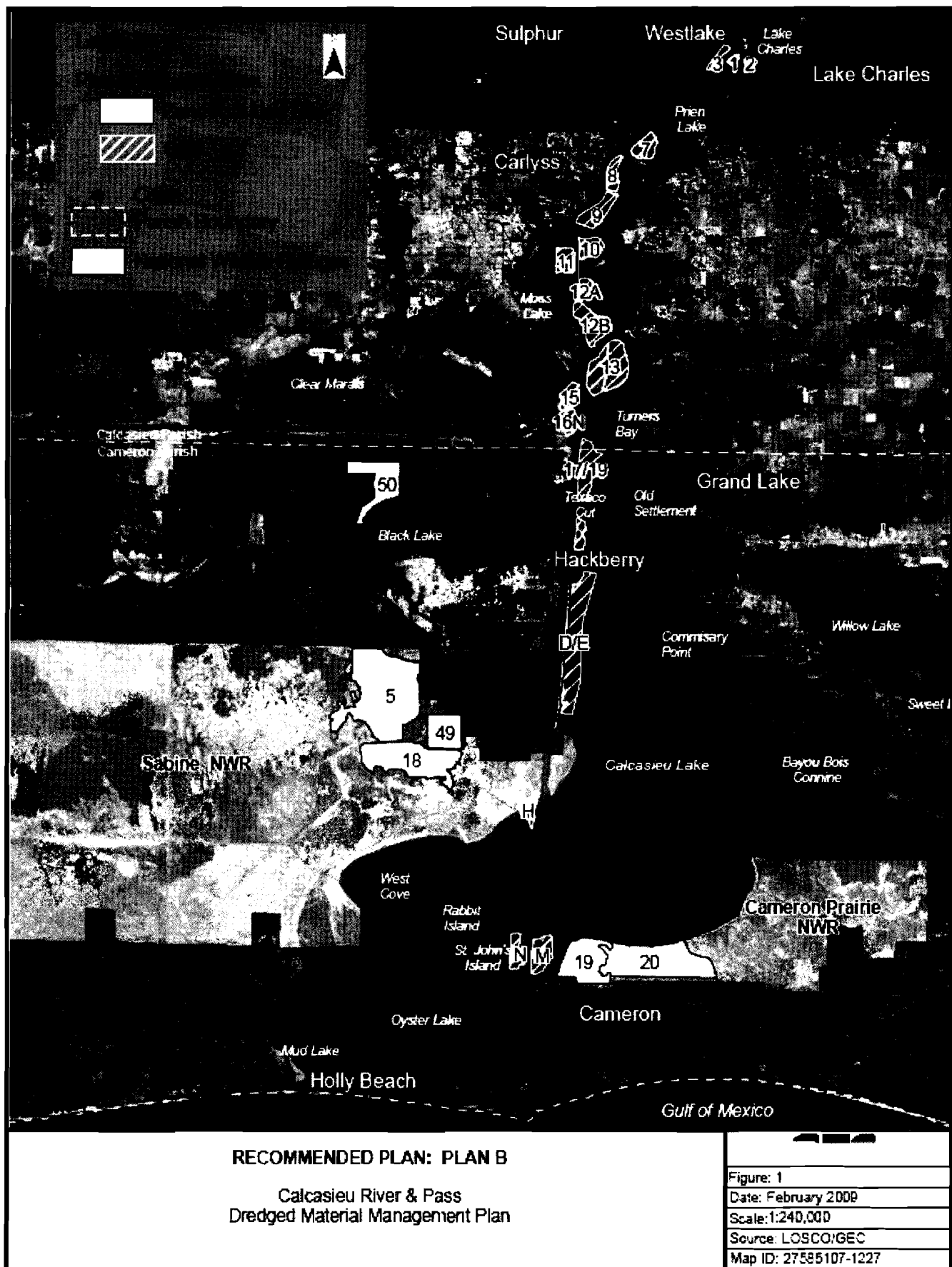


Figure 1. CDF and Beneficial Use disposal areas.



Figure 2. CDF and rock placement sites.

Table 1. Approximate size of CDF and Beneficial Use dredged material disposal areas.

<b>Site No.</b>	<b>Location/Description</b>	<b>Site Size (Acres)</b>
<b>Upland Confined Discharge Sites</b>		
CDF 9	Expansion of CDF into Marsh	116
CDF 10	Expansion of CDF into Marsh	94
CDF 11	Expansion of CDF into Marsh	116
CDF 13	Expansion of CDF into Marsh	219
CDFs 17, 19	Expansion of CDF into Calcasieu Lake	235
CDF D	Expansion of CDF into Calcasieu Lake	229
CDF E	Expansion of CDF into Calcasieu Lake	156
<b>Beneficial Use Sites</b>		
5	West of the CWPPRA Cycle 1 Site, SNWR	3,083
18	Vicinity of Pond 1A, SNWR	1,572
19	Cameron Prairie NWR	1,026
20	Cameron Prairie NWR	1,867
49	Cameron Parish School Board Site	639
50	Black Lake	887
CDF D/E Wetlands	Wetland Creation in Calcasieu Lake	476

Table 2. Approximate quantity of dredged material and rock in cubic yards (CY) that would be placed at Confined Disposal Facilities (CDF) and shoreline protection sites.

<b>Facility</b>	<b>20-Year Gross Quantity (CY)</b>
CDF 9	1,496,800
CDF 10	774,400
CDF 11	1,342,400
CDF 13	2,581,600
CDF 17/19	1,936,500
CDF D	4,087,200
CDF E	4,087,200
Foreshore Dike	8,390,000
<b>Total:</b>	<b>24,696,100</b>

Table 3. Approximate quantity of dredged material in cubic yards (CY) that would be placed at beneficial use sites.

<b>Beneficial Use Site</b>	<b>20-Year Gross Quantity (CY)</b>
Black Lake (50)	7,219,750
Sabine NWR (5)	8,873,500
Cameron Par. School Bd (49)	2,420,000
Sabine NWR (18)	9,276,500
CDF D Wetlands	2,066,000
CDF E Wetlands	2,066,000
Cameron Prairie NWR (19)	2,904,000
Cameron Prairie NWR (20)	1,165,600
<b>Total:</b>	<b>35,991,350</b>

P - "A. B." FRANKLIN  
STATE REPRESENTATIVE  
34TH REPRESENTATIVE DISTRICT  
2406 ELAINE ST.  
LAKE CHARLES, LA 70601

P - "CHARLIE" MELANCON  
U. S. REPRESENTATIVE  
3RD CONGRESSIONAL DISTRICT  
P.O. BOX 549  
NAPOLEONVILLE, LA 70390

P - "CHUCK" KLECKLEY  
STATE REPRESENTATIVE  
36TH REPRESENTATIVE DISTRICT  
4836 PORTRUSH DR.  
LAKE CHARLES, LA 70605

P - "MIKE" DANAHAY  
STATE REPRESENTATIVE  
33RD REPRESENTATIVE DISTRICT  
23 POINSETTA RD.  
SULPHUR, LA 70663

P - ADMINISTRATOR  
LA DEPT. OF NATURAL RESOURCES  
COASTAL MANAGEMENT DIVISION  
P.O. BOX 44487  
BATON ROUGE, LA 70804-4487

P - ARKANSAS STATE BANK DEPARTMENT  
400 HARDIN RD # 100  
LITTLE ROCK, AR 72211-3501

P - AUX LLC  
214 PAMELA PLACE  
THIBODAUX, LA 70301-6314

P - B.W. FARRELL INC.  
P.O. BOX 992  
PADUCAH, KY 42002-0992

P - BERNARD MCMENAMY CONT INC  
DREDGING MAR & GEN CONTRACTORS  
17 SUNRIDGE  
FLORISSANT, MO 63031

P - BERRY BROTHERS GEN CONTRACTORS INC.  
ATTN: WELDON MILLER  
P.O. BOX 253  
BERWICK, LA 70342

P - BONNET CARRE' ROD & GUN CLUB  
CHAIRMAN ENVIRONMENTAL COMMITTEE  
630 SPRUCE STREET  
NORCO, LA 70079

P - BRETT GEYMANN  
STATE REPRESENTATIVE  
35TH REPRESENTATIVE DISTRICT  
4832 CYPRESS LAKE DR.  
LAKE CHARLES, LA 70611

P - CAPT. K.C. SIVERD  
218 LE CIRQUE  
MADISONVILLE, LA 70447-3704

P - CARR OIL COMPANY INC  
P.O. BOX 318  
FRANKLIN, LA 70538

P - CASTEX LATERRE, INC  
P.O. BOX 206  
HOUMA, LA 70361

P - CHARLES W. BOUSTANY, JR.  
U. S. REPRESENTATIVE  
7TH CONGRESSIONAL DISTRICT  
800 LAFAYETTE ST., STE. 1400  
LAFAYETTE, LA 70501

P - CIRCLE, INC.  
1204 A ENGINEERING ROAD  
BELLE CHASSE, LA 70037

P - CL JACK STELLY & ASSOCIATES INC  
P.O. BOX 53353  
LAFAYETTE, LA 70505

P - COALITION OF COASTAL PARISHES  
P.O. DRAWER 5548  
THIBODAUX, LA 70302

P - COALITION TO RESTORE  
COASTAL LOUISIANA  
EXECUTIVE DIRECTOR  
6160 PERKINS ROAD, SUITE 225  
BATON ROUGE, LA 70808-4191

P - CRAIG A. JOHNSON - DIRECTOR  
LOUISIANA GEOGRAPHIC INFORMATION CENT.  
LOUISIANA STATE UNIVERSITY  
E-313 HOWE RUSSELL  
BATON ROUGE, LA 70803

P - CULTURAL & HISTORICAL/  
RESEARCH & DEVELOPMENT  
RESEARCH COORD MELANIE MARCOTTE  
P.O. BOX 661  
CHARENTON, LA 70523

P - DAN "BLADE" MORRISH  
STATE SENATOR  
25TH SENATORIAL DISTRICT  
3042 ENGLEWOOD DR.  
JENNINGS, LA 70546

P - DANIEL OAKLEY  
432 NORTH TRAILWOOD  
SULPHUR, LA 70663

P - DARIN M. LEE  
COASTAL RESOURCES SCIENTIST SUPERVISOR  
LA DNR - CRD  
1440 TIGER DRIVE, SUITE B  
THIBODAUX, LA 70301

P - DHH-OPH-CTR FOR ENVIRONMENTAL  
ENGINEERING SERVICES-SEWAGE  
P O BOX 4489  
BATON ROUGE, LA 70821-7513

P - DIAMOND SERVICES CORPORATION  
P.O. BOX 1286  
MORGAN CITY, LA 70381-1286

P - DIVISION ADMINISTRATOR  
FEDERAL HIGHWAY ADMINISTRATION  
5304 FLANDERS DRIVE SUITE A  
BATON ROUGE, LA 70808

P - DON HOFFMAN  
EPA, REGION VI - OFF. OF PLANNING AND  
COORD. / MAIL CODE 6EN-XP  
1445 ROSS AVENUE  
DALLAS, TX 75202-2733

P - DONALD J. CAZAYOUX  
U. S. REPRESENTATIVE  
6TH CONGRESSIONAL DISTRICT  
5555 HILTON AVE., STE. 100  
BATON ROUGE, LA 70808



P - DOROTHY SUE HILL  
STATE REPRESENTATIVE  
32ND REPRESENTATIVE DISTRICT  
529 TRAMEL RD.  
DRY CREEK, LA 70637-5018

P - DR. CHARLES WILSON  
EXECUTIVE DIRECTOR  
OFFICE OF SEA GRANT DEVELOPMENT-LSU  
239 SEA GRANT BUILDING  
BATON ROUGE, LA 70803

P - DUCKS UNLIMITED  
DIRECTOR KEN BABCOCK  
193 BUSINESS PARK DRIVE, SUITE E  
RIDGELAND, MS 39157-6026

P - ENGINEERING DEVELOPMENT GROUP INC  
P.O. BOX 35  
METAIRIE, LA 70004-0035

P - ENTERGY  
1001 VIRGIL STREET  
GRETNA, LA 70053

P - FORD CONSTRUCTION COMPANY CO  
P.O. BOX 527  
DYERBURG, TN 38024

P - G. PAUL KEMP, PH.D.  
VICE-PRESIDENT, GULF COAST INITIATIVE  
NATIONAL AUDUBON SOCIETY  
633 MAGNOLIA WOODS  
BATON ROUGE, LA 70808

P - GARY ZIMMERER  
FEMA - REGION VI, FEDERAL CENTER  
800 NORTH LOOP 288  
DENTON, TX 76201-3698

P - GEOLOGICAL CONSULTANT  
ROBERT P WALDRON INC  
4633 TRANSCONTINENTAL DR  
METAIRIE, LA 70002

P - GOVERNOR OF LOUISIANA  
HON. BOBBY JINDAL  
STATE CAPITOL  
P.O. BOX 94004  
BATON ROUGE, LA 70804

P - GRAND ISLE SHIPYARD INC  
ROBERT PREGAANT  
P.O. BOX 820  
GALLIANO, LA 70354

P - GRAVITY DRAINAGE DIST NO 4  
OF CALCASIEU PARISH LOUISIANA  
KEN BOUDREAUX  
1204 LAKE SHORE DRIVE  
LAKE CHARLES, LA 70601

P - GREGORY P. DUCOTE  
INTERAGENCY AFFAIRS - LADNR  
CMD  
P.O. BOX 44487, CAPITAL STATION  
BATON ROUGE, LA 70804-4487

P - GULF STATES  
MARINE FISHERIES COMMISSION  
JEFF RESTER  
P.O. BOX 726  
OCEAN SPRINGS, MS 39564

P - HONORABLE DAVID VITTER  
U.S. SENATE  
HALE BOGGS FEDERAL BLDG  
2800 VETERANS BLVD. SUITE 201  
METAIRIE, LA 70002

P - HONORABLE MARY LANDRIEU  
U.S. SENATE  
4301 S. PRIEUR  
NEW ORLEANS, LA 70125

P - HYDRO CONSULTANTS INC  
MR. ERNEST GAMMON  
10375 SIEGEN LANE  
BATON ROUGE, LA 70810-4926

P - J H MENGE & CO.  
ATTN: BUREN JONES  
P.O. BOX 23602  
NEW ORLEANS, LA 70183

P - JE JUMONVILLE CONTRACTOR INC  
P.O. BOX 425  
PLAQUEMINE, LA 70764

P - JIM WILKINS  
SEA GRANT LEGAL PROGRAM  
LOUISIANA STATE UNIVERSITY  
227 B SEA GRANT BUILDING  
BATON ROUGE, LA 70803-7507

P - JOHN E. "JOHNNY" GUINN  
STATE REPRESENTATIVE  
37TH REPRESENTATIVE DISTRICT  
515 13TH ST.  
JENNINGS, LA 70546

P - JOHN SMITH  
STATE SENATOR  
30TH SENATORIAL DISTRICT  
6 LIVE OAK DR.  
LEESVILLE, LA 71446

P - JOHN SNELL-ANCHOR  
WVUE-TV  
1025 SOUTH JEFFERSON DAVIS PKWY.  
NEW ORLEANS, LA 70125

P - JONATHAN PERRY  
STATE REPRESENTATIVE  
47TH REPRESENTATIVE DISTRICT  
312 ABSHIRE DR.  
KAPLAN, LA 70548

P - KANSAS CITY SOUTHERN  
RAILWAY COMPANY  
P.O. BOX 219335  
KANSAS CITY, MO 64121-9335

P - KATHY PITRE  
LAFOURCHE TELEPHONE CO INC  
P.O. BOX 188  
LA ROSE, LA 70373

P - KEVIN NORTON  
STATE CONSERVATIONIST - NRCS  
3737 GOVERNMENT STREET  
ALEXANDRIA, LA 71302

P - LA DEPARTMENT OF ENVIRONMENTAL  
OFFICE OF THE SECRETARY  
ATTN: JOANNA GARDNER  
P.O. BOX 4301  
BATON ROUGE, LA 70821-4301

P - LA DEPT OF NATURAL RESOURCES  
OFFICE OF CONSERVATION  
SURFACE MINING DIVISION  
P.O. BOX 44275  
BATON ROUGE, LA 70804-4275

P - LA DEPT OF NATURAL RESOURCES  
TITLE & RECORDS SECTION  
DIVISION OF STATE LANDS  
P.O. BOX 44124 - CAPITOL STATION  
BATON ROUGE, LA 70804

P - LA DEPT OF NATURAL RESOURCES  
COASTAL RESOURCES PROGRAM  
CONSISTENCY COORDINATOR  
P.O. BOX 44487  
BATON ROUGE, LA 70804-4487

P - LA DEPT OF PUBLIC WORKS  
300 NORTH BOULEVARD-P.O. BOX 1471  
BATON ROUGE, LA 70821

P - LA DEPT OF TRANSPORTATION & DEV  
ASST CHIEF ENGR WATER RESOURCES  
OFFICE OF PUBLIC WORKS  
P.O. BOX 94245  
BATON ROUGE, LA 70804-4245

P - LA DEPT OF WILDLIFE & FISHERIES  
MR. TIM MORRISON  
P.O. BOX 98000  
BATON ROUGE, LA 70898-9000

P - LA DEPT WILDLIFE & FISHERIES  
SECRETARY  
P.O. BOX 98000  
BATON ROUGE, LA 70898-9000

P - LA DEPT WILDLIFE & FISHERIES  
MR. MAURICE B. WATSON  
P.O. BOX 98000  
BATON ROUGE, LA 70898-9000

P - LA DEPT WILDLIFE & FISHERIES  
MR. GARY LESTER-NAT HERITAGE PGM  
P.O. BOX 98000  
BATON ROUGE, LA 70898-9000

P - LA DEPT. OF AGRICULTURE & FORESTRY  
MR. MATTHEW KEPPIINGER  
OFFICE OF AG & ENVIRONMNTAL SCIENCE  
P.O. BOX 3596  
BATON ROUGE, LA 70821-3596

P - LA DEPT. OF AGRICULTURE & FORESTRY  
OFFICE OF FORESTRY  
P.O. BOX 1628  
BATON ROUGE, LA 70821

P - LA DEPT. OF CULTURE RECREATION  
& TOURISM/OFFICE OF STATE PARKS  
DIV. OF OUTDOOR RECREATION  
P.O. BOX 44426  
BATON ROUGE, LA 70804-4426

P - LA DEPT. OF TRANSPORTATION & DEV.  
FEDERAL PROJECTS SECTION  
RM 207 - PO 94245  
8900 JIMMY WEDELL ST.  
BATON ROUGE, LA 70804-9245

P - LA DIVISION OF ADMINISTRATION  
STATE PLANNING OFFICE  
P.O. BOX 94095  
BATON ROUGE, LA 70804

P - LAKE PONTCHARTRAIN  
SANITARY DISTRICT  
P.O. BOX 4489  
BATON ROUGE, LA 70821-4489

P - LIEUTENANT GOVERNOR  
"MITCH" LANDRIEU  
P.O. BOX 44243  
BATON ROUGE, LA 70804-4243

P - LOUISIANA COLLECTION  
SPECIAL COLLECTIONS DIVISION  
TULANE UNIVERSITY LIBRARIES  
6823 ST. CHARLES AVENUE  
NEW ORLEANS, LA 70118

P - LOUISIANA STATE UNIVERSITY  
CURATOR OF ANTHROPOLOGY  
DEPARTMENT OF GEOGRAPHY  
& ANTHROPOLOGY  
BATON ROUGE, LA 70803

P - LUHR BROS INC  
P.O. BOX 69  
COLUMBIA, IL 62236-0069

P - MASSAMAN CONSTRUCTION COMPANY  
P.O. BOX 22007  
ST. LOUIS, MO 63126-0007

P - MIKE PLAISANCE  
PLAISANCE DRAGLINE & DREDGING CO INC  
P.O. BOX 578  
GOLDEN MEADOW, LA 70357

P - MIKE STRAIN  
LA DEPT OF AG & FORESTRY  
P.O. BOX 631  
BATON ROUGE, LA 70821-0631

P - MR CARLTON DUFRECHOU  
LAKE PONTCHARTRAIN  
BASIN FOUNDATION  
P.O. BOX 6965  
METAIRIE, LA 70009

P - MR RON BRINKMAN  
US MINERALS MANAGEMENT SERVICE  
1201 ELMWOOD PARK BLVD  
NEW ORLEANS, LA 70123

P - MR. BIJAN SHARAFKHANI  
LOUISIANA DEPT. OF ENV. QUALITY  
WATER QUALITY CERTIFICATIONS SECTION  
P.O. BOX 4313  
BATON ROUGE, LA 70821-4313

P - MR. GEORGE PIVACH JR.  
P.O. BOX 160  
BELLE CHASSE, LA 70037

P - MR. JAY VINCENT  
509 3RD AVENUE  
HARVEY, LA 70058

P - MR. JOHN TALIANCICH  
P.O. BOX 727  
EMPIRE, LA 70050

P - MR. JOSEPH V FRANK III  
218 LINTON AVENUE  
NATCHEZ, MS 39120-2316

P - MRS. ROBERTA A. SCULL  
GOVERNMENT DOCUMENTS DIVISION  
LIBRARY  
LOUISIANA STATE UNIVERSITY  
BATON ROUGE, LA 70803

P - MS. CONNIE BURAS  
BCR3LLC  
PO BOX 393  
BELLE CHASSE, LA 70037-0393

P - MS. JEAN ARMSTRONG  
LA LEAGUE OF WOMEN VOTERS  
728 NORTH BOULEVARD  
BATON ROUGE, LA 70802

P - NATIONAL WILDLIFE FEDERATION  
1400 16TH STREET NW  
WASHINGTON, DC 20036

P - NATURAL RESOURCES  
DEFENSE COUNCIL INC  
40 W 20 ND STREET  
NEW YORK, NY 10011-4211

P - NOAA NEPA COORDINATOR  
PROGRAM, PLANNING & INTEGRATION  
ROUTE: PPI/SP SSMC3, RM. #15603  
1315 EAST-WEST HIGHWAY  
SILVER SPRING, MD 20910

P - NOLAN ROBICHEAUX  
MIKE HOOKS INC  
P.O. BOX 1525  
LAKE CHARLES, LA 70602

P - NORFOLK SOUTHERN  
1200 PEACHTREE NE  
ATLANTA, GA 30309-3579

P - OUTDOOR EDITOR  
MR. MIKE COOK  
STATE-TIMES / MORNING ADVOCATE  
P.O. BOX 588  
BATON ROUGE, LA 70815

P - PHIL BOGGAN  
SHPO, DEPT. OF CULTURE  
RECREATION AND TOURISM  
P.O. BOX 44247  
BATON ROUGE, LA 70804

P - PONTCHARTRAIN MATERIALS CORP  
STEVE TREUTING  
P.O. BOX 8005  
NEW ORLEANS, LA 70182

P - PORT AGGREGATES, INC.  
TIMOTHY J. GUINN  
P.O. BOX 339  
JENNINGS, LA 70546

P - PORT OF GREATER BATON ROUGE  
MR. JOHN POLANSKY  
DIRECTOR OF ENGINEERING  
P.O. BOX 380  
PORT ALLEN, LA 70767-0380

P - PORT OF NEW ORLEANS  
JOSEPH G. COCHIARA JR.  
SR. MANAGER FOR MGT. SERVICES  
P.O. BOX 60046  
NEW ORLEANS, LA 70160

P - PORT OF NEW ORLEANS  
BOARD OF COMMISSIONERS  
CHIEF ENGINEER  
P.O. BOX 60046  
NEW ORLEANS, LA 70160

P - POTASHNICK-HARRISON  
CONSTRUCTION COMPANY  
P.O. BOX 190  
CAPE GIRARDEAU, MO 63702-0190

P - RANDY LANCTOT  
LOUISIANA WILDLIFE FEDERATION  
P.O. BOX 65239 LSU STATION  
BATON ROUGE, LA 70896-5239

P - RICHARD D. HARTMAN  
NMFS - HABITAT CONSERVATION DIVISION  
LOUISIANA STATE UNIVERSITY  
BATON ROUGE, LA 70803-7535

P - RODNEY ALEXANDER  
U. S. REPRESENTATIVE  
5TH CONGRESSIONAL DISTRICT  
1900 STUBBS AVENUE, SUITE B  
MONROE, LA 71201

P - RORY NETTLES  
7445 LINDSLY LANE  
VENTRESS, LA 70783

P - ROY KIESEL & TUCKER  
MR. VICTOR L. ROY III  
2355 DRUSILLA LANE-P.O. BOX 15928  
BATON ROUGE, LA 70895-5928

P - SECRETARY OF STATE  
JAY DARDENNE  
8855 BROOKWOOD DRIVE  
BATON ROUGE, LA 70809

P - STEVE SCALISE  
U. S. REPRESENTATIVE  
1ST CONGRESSIONAL DISTRICT  
3525 NORTH CAUSEWAY BLVD, STE. 1020  
METAIRIE, LA 70002

P - TENNESSEE GAS PIPELINE  
SUGAR MILL POINT  
1115 REGAL ROW  
HOUMA, LA 70360

P - THE WATERWAYS JOURNAL  
319 NORTH FOURTH ST., SUITE 650  
ST. LOUIS, MO 63102-1994

P - TIMES-PICAYUNE  
MR. MARK SCHLEIFSTEIN  
3800 HOWARD AVENUE  
NEW ORLEANS, LA 70140

P - TRIGON EXPLORATION INC  
P.O. BOX 52544  
LAFAYETTE, LA 70505

P - TULANE UNIVERSITY ARMY ROTC  
6823 ST CHARLES AVE  
NEW ORLEANS, LA 70118-5698

P - U.S. ADVISORY COUNCIL ON HISTORIC  
PRESERVATION-EXECUTIVE DIRECTOR  
SUITE 809  
1100 PENNSYLVANIA AVE. NW  
WASHINGTON, DC 20004

P - U.S. ADVISORY COUNCIL ON HISTORIC  
PRESERVATION  
1100 PENNSYLVANIA AVENUE NW RM. 809  
WASHINGTON, DC 20004

P - U.S. COAST GUARD 8TH DISTRICT  
GUY TETREAU  
HALE BOGGS FEDERAL BUILDING  
501 MAGAZINE ST, RM 1341  
NEW ORLEANS, LA 70130

P - U.S. DEPT OF ENERGY  
OFFICE OF ENV COMPLIANCE  
ROOM 3G-092 EH22  
1000 INDEPENDENCE AVENUE SW  
WASHINGTON, DC 20585

P - U.S. DEPT OF THE INTERIOR  
FISH & WILDLIFE SERVICE  
61389 HWY 434  
LACOMBE, LA 70445

P - USEPA REGION 6  
MARINE AND WETLANDS SECTION 6WQ-EM  
ATTN: TROY HILL  
1445 ROSS AVENUE  
DALLAS, TX 75202-2733

P - VINSON & ELKINS-ATTYS  
MR. LARRY W NETTLES  
3300 FIRST CITY TOWER-1001 FANNIN  
HOUSTON, TX 77002-6760

P - WALK HAYDEL'S ASSOC  
MR. FRANK H. WALK  
CHAIRMAN  
600 CARONDOLET STREET  
NEW ORLEANS, LA 70130

P - WALLY "GATOR" LANDRY  
PRESIDENT  
CRUCIAL, INC.  
142 ENTERPRISE DIVE  
GRETNA, LA 70056

P - WHC INC  
P.O. BOX 2340  
LAFAYETTE, LA 70502

P - WILLIAM L YEATES JR.  
DIRECTOR OF PUBLIC WORKS  
P.O. BOX 628  
COVINGTON, LA 70434

P - WILLIAMS-MCWILLIAMS CO INC  
P.O. BOX 8746  
METAIRIE, LA 70011

P - WILLIE L. MOUNT  
STATE SENATOR  
27TH SENATORIAL DISTRICT  
P.O. BOX 3004  
LAKE CHARLES, LA 70602

