

# Southwest Coastal NED Plan

196



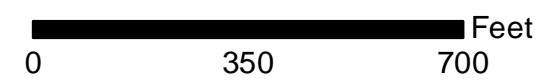
200

208

## PROJECT STRUCTURES

- RESIDENTIAL
- NON-RESIDENTIAL
- WAREHOUSE

Structures identified as preliminarily eligible require additional on-site assessment and must meet certain criteria in order to participate in the nonstructural project. More information about the general nonstructural process can be found in Appendix L. Additional details concerning eligibility criteria will be developed during the design and construction phases.



Structure Inventory: Data on study area structures were collected in 2012 via visual assessment.

Imagery: Louisiana NAIP Imagery 2013





# Southwest Coastal NED Plan

64



## PROJECT STRUCTURES

- RESIDENTIAL
- NON-RESIDENTIAL
- WAREHOUSE

Structures identified as preliminarily eligible require additional on-site assessment and must meet certain criteria in order to participate in the nonstructural project. More information about the general nonstructural process can be found in Appendix L. Additional details concerning eligibility criteria will be developed during the design and construction phases.



Structure Inventory: Data on study area structures were collected in 2012 via visual assessment.

Imagery: Louisiana NAIP Imagery 2013





# Southwest Coastal NED Plan

65



## PROJECT STRUCTURES

- RESIDENTIAL
- NON-RESIDENTIAL
- WAREHOUSE

Structures identified as preliminarily eligible require additional on-site assessment and must meet certain criteria in order to participate in the nonstructural project. More information about the general nonstructural process can be found in Appendix L. Additional details concerning eligibility criteria will be developed during the design and construction phases.

211



Structure Inventory: Data on study area structures were collected in 2012 via visual assessment.

Imagery: Louisiana NAIP Imagery 2013





# Southwest Coastal NED Plan



## PROJECT STRUCTURES

- RESIDENTIAL
- NON-RESIDENTIAL
- WAREHOUSE

Structures identified as preliminarily eligible require additional on-site assessment and must meet certain criteria in order to participate in the nonstructural project. More information about the general nonstructural process can be found in Appendix L. Additional details concerning eligibility criteria will be developed during the design and construction phases.

213

0 350 700 Feet

Structure Inventory: Data on study area structures were collected in 2012 via visual assessment.

Imagery: Louisiana NAIP Imagery 2013





# Southwest Coastal NED Plan

197



## PROJECT STRUCTURES

- RESIDENTIAL
- NON-RESIDENTIAL
- WAREHOUSE

Structures identified as preliminarily eligible require additional on-site assessment and must meet certain criteria in order to participate in the nonstructural project. More information about the general nonstructural process can be found in Appendix L. Additional details concerning eligibility criteria will be developed during the design and construction phases.

0 350 700 Feet

Structure Inventory: Data on study area structures were collected in 2012 via visual assessment.

Imagery: Louisiana NAIP Imagery 2013





# Southwest Coastal NED Plan

199



207

## PROJECT STRUCTURES

- RESIDENTIAL
- NON-RESIDENTIAL
- WAREHOUSE

Structures identified as preliminarily eligible require additional on-site assessment and must meet certain criteria in order to participate in the nonstructural project. More information about the general nonstructural process can be found in Appendix L. Additional details concerning eligibility criteria will be developed during the design and construction phases.



Structure Inventory: Data on study area structures were collected in 2012 via visual assessment.

Imagery: Louisiana NAIP Imagery 2013





# Southwest Coastal NED Plan

200



206

208

Gulf Hwy

## PROJECT STRUCTURES

- RESIDENTIAL
- NON-RESIDENTIAL
- WAREHOUSE

Structures identified as preliminarily eligible require additional on-site assessment and must meet certain criteria in order to participate in the nonstructural project. More information about the general nonstructural process can be found in Appendix L. Additional details concerning eligibility criteria will be developed during the design and construction phases.

0 350 700 Feet

Structure Inventory: Data on study area structures were collected in 2012 via visual assessment.

Imagery: Louisiana NAIP Imagery 2013





# Southwest Coastal NED Plan

201



207

## PROJECT STRUCTURES

- RESIDENTIAL
- NON-RESIDENTIAL
- WAREHOUSE

Structures identified as preliminarily eligible require additional on-site assessment and must meet certain criteria in order to participate in the nonstructural project. More information about the general nonstructural process can be found in Appendix L. Additional details concerning eligibility criteria will be developed during the design and construction phases.



Structure Inventory: Data on study area structures were collected in 2012 via visual assessment.

Imagery: Louisiana NAIP Imagery 2013





# Southwest Coastal NED Plan



210

PROJECT STRUCTURES	
●	RESIDENTIAL
●	NON-RESIDENTIAL
●	WAREHOUSE

Structures identified as preliminarily eligible require additional on-site assessment and must meet certain criteria in order to participate in the nonstructural project. More information about the general nonstructural process can be found in Appendix L. Additional details concerning eligibility criteria will be developed during the design and construction phases.

215



Structure Inventory: Data on study area structures were collected in 2012 via visual assessment.

Imagery: Louisiana NAIP Imagery 2013





# Southwest Coastal NED Plan

209



**PROJECT STRUCTURES**

- RESIDENTIAL
- NON-RESIDENTIAL
- WAREHOUSE

Structures identified as preliminarily eligible require additional on-site assessment and must meet certain criteria in order to participate in the nonstructural project. More information about the general nonstructural process can be found in Appendix L. Additional details concerning eligibility criteria will be developed during the design and construction phases.

216



Structure Inventory: Data on study area structures were collected in 2012 via visual assessment.

Imagery: Louisiana NAIP Imagery 2013





# Southwest Coastal NED Plan

203



212

## PROJECT STRUCTURES

- RESIDENTIAL
- NON-RESIDENTIAL
- WAREHOUSE

Structures identified as preliminarily eligible require additional on-site assessment and must meet certain criteria in order to participate in the nonstructural project. More information about the general nonstructural process can be found in Appendix L. Additional details concerning eligibility criteria will be developed during the design and construction phases.



Structure Inventory: Data on study area structures were collected in 2012 via visual assessment.

Imagery: Louisiana NAIP Imagery 2013





# Southwest Coastal NED Plan



211

213

218

**PROJECT STRUCTURES**

- RESIDENTIAL
- NON-RESIDENTIAL
- WAREHOUSE

Structures identified as preliminarily eligible require additional on-site assessment and must meet certain criteria in order to participate in the nonstructural project. More information about the general nonstructural process can be found in Appendix L. Additional details concerning eligibility criteria will be developed during the design and construction phases.



Structure Inventory: Data on study area structures were collected in 2012 via visual assessment.

Imagery: Louisiana NAIP Imagery 2013





# Southwest Coastal NED Plan

204

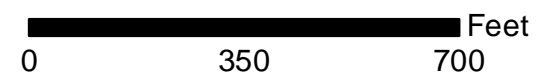


212

## PROJECT STRUCTURES

- RESIDENTIAL
- NON-RESIDENTIAL
- WAREHOUSE

Structures identified as preliminarily eligible require additional on-site assessment and must meet certain criteria in order to participate in the nonstructural project. More information about the general nonstructural process can be found in Appendix L. Additional details concerning eligibility criteria will be developed during the design and construction phases.



Structure Inventory: Data on study area structures were collected in 2012 via visual assessment.

Imagery: Louisiana NAIP Imagery 2013





# Southwest Coastal NED Plan



## PROJECT STRUCTURES

- RESIDENTIAL
- NON-RESIDENTIAL
- WAREHOUSE

Structures identified as preliminarily eligible require additional on-site assessment and must meet certain criteria in order to participate in the nonstructural project. More information about the general nonstructural process can be found in Appendix L. Additional details concerning eligibility criteria will be developed during the design and construction phases.

226



Structure Inventory: Data on study area structures were collected in 2012 via visual assessment.

Imagery: Louisiana NAIP Imagery 2013





# Southwest Coastal NED Plan

209



216

## PROJECT STRUCTURES

- RESIDENTIAL
- NON-RESIDENTIAL
- WAREHOUSE

Structures identified as preliminarily eligible require additional on-site assessment and must meet certain criteria in order to participate in the nonstructural project. More information about the general nonstructural process can be found in Appendix L. Additional details concerning eligibility criteria will be developed during the design and construction phases.

0 350 700 Feet

Structure Inventory: Data on study area structures were collected in 2012 via visual assessment.

Imagery: Louisiana NAIP Imagery 2013

Page 215 of 568





# Southwest Coastal NED Plan

210



215

217

## PROJECT STRUCTURES

- RESIDENTIAL
- NON-RESIDENTIAL
- WAREHOUSE

Structures identified as preliminarily eligible require additional on-site assessment and must meet certain criteria in order to participate in the nonstructural project. More information about the general nonstructural process can be found in Appendix L. Additional details concerning eligibility criteria will be developed during the design and construction phases.



Structure Inventory: Data on study area structures were collected in 2012 via visual assessment.

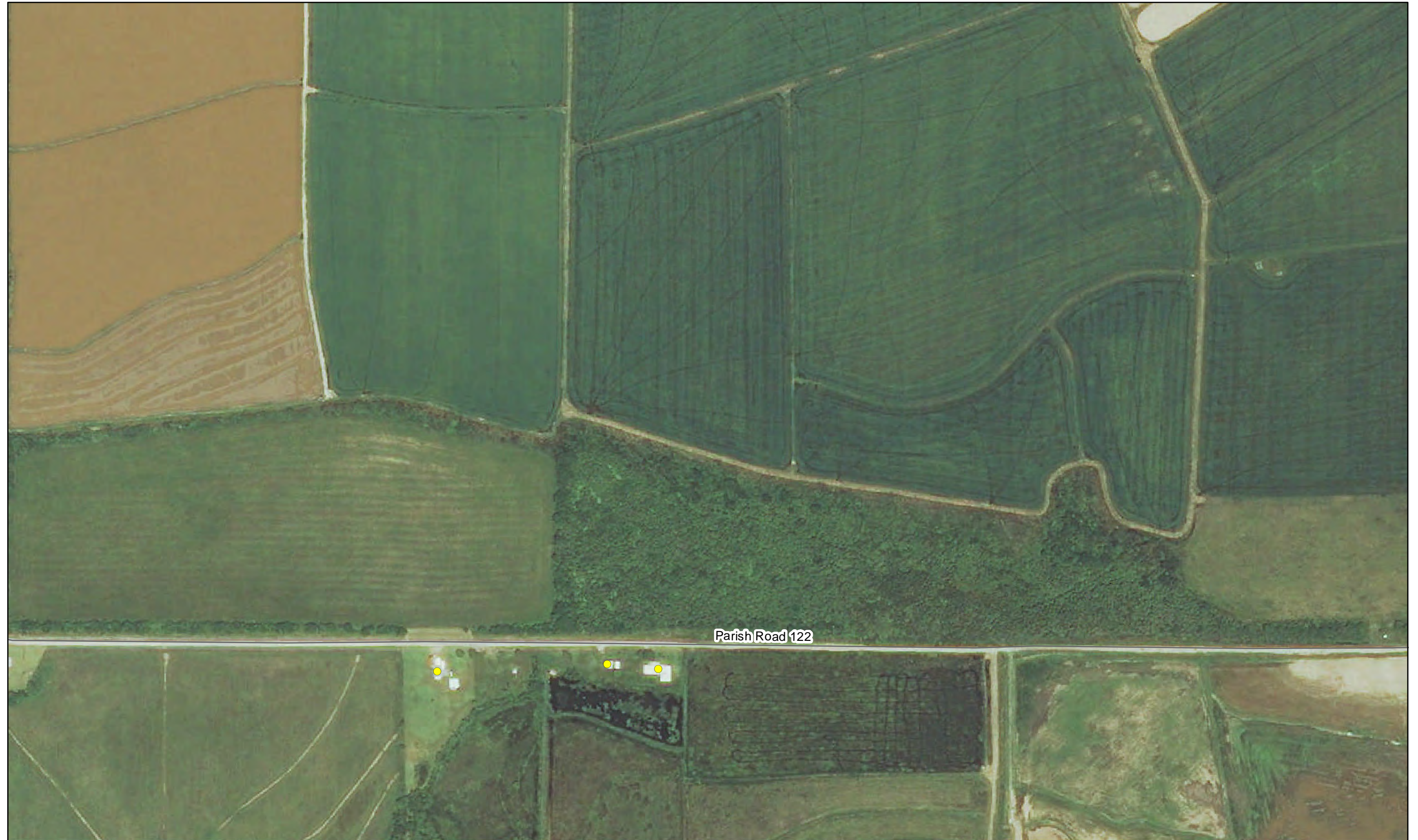
Imagery: Louisiana NAIP Imagery 2013





# Southwest Coastal NED Plan

216



## PROJECT STRUCTURES

- RESIDENTIAL
- NON-RESIDENTIAL
- WAREHOUSE

Structures identified as preliminarily eligible require additional on-site assessment and must meet certain criteria in order to participate in the nonstructural project. More information about the general nonstructural process can be found in Appendix L. Additional details concerning eligibility criteria will be developed during the design and construction phases.

0 350 700 Feet

Structure Inventory: Data on study area structures were collected in 2012 via visual assessment.

Imagery: Louisiana NAIP Imagery 2013





# Southwest Coastal NED Plan

212



## PROJECT STRUCTURES

- RESIDENTIAL
- NON-RESIDENTIAL
- WAREHOUSE

Structures identified as preliminarily eligible require additional on-site assessment and must meet certain criteria in order to participate in the nonstructural project. More information about the general nonstructural process can be found in Appendix L. Additional details concerning eligibility criteria will be developed during the design and construction phases.



Structure Inventory: Data on study area structures were collected in 2012 via visual assessment.

Imagery: Louisiana NAIP Imagery 2013





# Southwest Coastal NED Plan

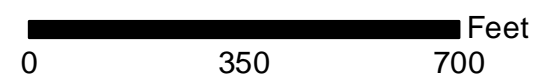


## PROJECT STRUCTURES

- RESIDENTIAL
- NON-RESIDENTIAL
- WAREHOUSE

Structures identified as preliminarily eligible require additional on-site assessment and must meet certain criteria in order to participate in the nonstructural project. More information about the general nonstructural process can be found in Appendix L. Additional details concerning eligibility criteria will be developed during the design and construction phases.

227



Structure Inventory: Data on study area structures were collected in 2012 via visual assessment.

Imagery: Louisiana NAIP Imagery 2013





# Southwest Coastal NED Plan



221

**PROJECT STRUCTURES**

- RESIDENTIAL
- NON-RESIDENTIAL
- WAREHOUSE

Structures identified as preliminarily eligible require additional on-site assessment and must meet certain criteria in order to participate in the nonstructural project. More information about the general nonstructural process can be found in Appendix L. Additional details concerning eligibility criteria will be developed during the design and construction phases.



Structure Inventory: Data on study area structures were collected in 2012 via visual assessment.

Imagery: Louisiana NAIP Imagery 2013





# Southwest Coastal NED Plan



220

222

## PROJECT STRUCTURES

- RESIDENTIAL
- NON-RESIDENTIAL
- WAREHOUSE

Structures identified as preliminarily eligible require additional on-site assessment and must meet certain criteria in order to participate in the nonstructural project. More information about the general nonstructural process can be found in Appendix L. Additional details concerning eligibility criteria will be developed during the design and construction phases.



Structure Inventory: Data on study area structures were collected in 2012 via visual assessment.

Imagery: Louisiana NAIP Imagery 2013





# Southwest Coastal NED Plan



221

## PROJECT STRUCTURES

- RESIDENTIAL
- NON-RESIDENTIAL
- WAREHOUSE

Structures identified as preliminarily eligible require additional on-site assessment and must meet certain criteria in order to participate in the nonstructural project. More information about the general nonstructural process can be found in Appendix L. Additional details concerning eligibility criteria will be developed during the design and construction phases.



Structure Inventory: Data on study area structures were collected in 2012 via visual assessment.

Imagery: Louisiana NAIP Imagery 2013





# Southwest Coastal NED Plan



**PROJECT STRUCTURES**

- RESIDENTIAL
- NON-RESIDENTIAL
- WAREHOUSE

Structures identified as preliminarily eligible require additional on-site assessment and must meet certain criteria in order to participate in the nonstructural project. More information about the general nonstructural process can be found in Appendix L. Additional details concerning eligibility criteria will be developed during the design and construction phases.

230



Structure Inventory: Data on study area structures were collected in 2012 via visual assessment.

Imagery: Louisiana NAIP Imagery 2013





# Southwest Coastal NED Plan

223

225



**PROJECT STRUCTURES**

- RESIDENTIAL
- NON-RESIDENTIAL
- WAREHOUSE

Structures identified as preliminarily eligible require additional on-site assessment and must meet certain criteria in order to participate in the nonstructural project. More information about the general nonstructural process can be found in Appendix L. Additional details concerning eligibility criteria will be developed during the design and construction phases.

231



Structure Inventory: Data on study area structures were collected in 2012 via visual assessment.

Imagery: Louisiana NAIP Imagery 2013





# Southwest Coastal NED Plan

224



**PROJECT STRUCTURES**

- RESIDENTIAL
- NON-RESIDENTIAL
- WAREHOUSE

Structures identified as preliminarily eligible require additional on-site assessment and must meet certain criteria in order to participate in the nonstructural project. More information about the general nonstructural process can be found in Appendix L. Additional details concerning eligibility criteria will be developed during the design and construction phases.

232



Structure Inventory: Data on study area structures were collected in 2012 via visual assessment.

Imagery: Louisiana NAIP Imagery 2013





# Southwest Coastal NED Plan

214



## PROJECT STRUCTURES

- RESIDENTIAL
- NON-RESIDENTIAL
- WAREHOUSE

Structures identified as preliminarily eligible require additional on-site assessment and must meet certain criteria in order to participate in the nonstructural project. More information about the general nonstructural process can be found in Appendix L. Additional details concerning eligibility criteria will be developed during the design and construction phases.



Structure Inventory: Data on study area structures were collected in 2012 via visual assessment.

Imagery: Louisiana NAIP Imagery 2013





# Southwest Coastal NED Plan

219



## PROJECT STRUCTURES

- RESIDENTIAL
- NON-RESIDENTIAL
- WAREHOUSE

Structures identified as preliminarily eligible require additional on-site assessment and must meet certain criteria in order to participate in the nonstructural project. More information about the general nonstructural process can be found in Appendix L. Additional details concerning eligibility criteria will be developed during the design and construction phases.

243



Structure Inventory: Data on study area structures were collected in 2012 via visual assessment.

Imagery: Louisiana NAIP Imagery 2013





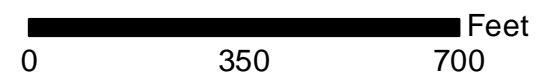
# Southwest Coastal NED Plan



## PROJECT STRUCTURES

- RESIDENTIAL
- NON-RESIDENTIAL
- WAREHOUSE

Structures identified as preliminarily eligible require additional on-site assessment and must meet certain criteria in order to participate in the nonstructural project. More information about the general nonstructural process can be found in Appendix L. Additional details concerning eligibility criteria will be developed during the design and construction phases.



Structure Inventory: Data on study area structures were collected in 2012 via visual assessment.

Imagery: Louisiana NAIP Imagery 2013





# Southwest Coastal NED Plan



**PROJECT STRUCTURES**

- RESIDENTIAL
- NON-RESIDENTIAL
- WAREHOUSE

Structures identified as preliminarily eligible require additional on-site assessment and must meet certain criteria in order to participate in the nonstructural project. More information about the general nonstructural process can be found in Appendix L. Additional details concerning eligibility criteria will be developed during the design and construction phases.

248



Structure Inventory: Data on study area structures were collected in 2012 via visual assessment.

Imagery: Louisiana NAIP Imagery 2013





# Southwest Coastal NED Plan

223



231

## PROJECT STRUCTURES

- RESIDENTIAL
- NON-RESIDENTIAL
- WAREHOUSE

Structures identified as preliminarily eligible require additional on-site assessment and must meet certain criteria in order to participate in the nonstructural project. More information about the general nonstructural process can be found in Appendix L. Additional details concerning eligibility criteria will be developed during the design and construction phases.

251



Structure Inventory: Data on study area structures were collected in 2012 via visual assessment.

Imagery: Louisiana NAIP Imagery 2013

Page 230 of 568





# Southwest Coastal NED Plan

224



230

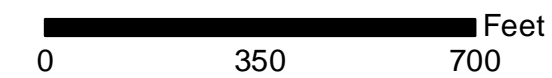
232

252

## PROJECT STRUCTURES

- RESIDENTIAL
- NON-RESIDENTIAL
- WAREHOUSE

Structures identified as preliminarily eligible require additional on-site assessment and must meet certain criteria in order to participate in the nonstructural project. More information about the general nonstructural process can be found in Appendix L. Additional details concerning eligibility criteria will be developed during the design and construction phases.



Structure Inventory: Data on study area structures were collected in 2012 via visual assessment.

Imagery: Louisiana NAIP Imagery 2013





# Southwest Coastal NED Plan

225



231

233

## PROJECT STRUCTURES

- RESIDENTIAL
- NON-RESIDENTIAL
- WAREHOUSE

Structures identified as preliminarily eligible require additional on-site assessment and must meet certain criteria in order to participate in the nonstructural project. More information about the general nonstructural process can be found in Appendix L. Additional details concerning eligibility criteria will be developed during the design and construction phases.



Structure Inventory: Data on study area structures were collected in 2012 via visual assessment.

Imagery: Louisiana NAIP Imagery 2013





# Southwest Coastal NED Plan

232

234



**PROJECT STRUCTURES**

- RESIDENTIAL
- NON-RESIDENTIAL
- WAREHOUSE

Structures identified as preliminarily eligible require additional on-site assessment and must meet certain criteria in order to participate in the nonstructural project. More information about the general nonstructural process can be found in Appendix L. Additional details concerning eligibility criteria will be developed during the design and construction phases.

253



Structure Inventory: Data on study area structures were collected in 2012 via visual assessment.

Imagery: Louisiana NAIP Imagery 2013





# Southwest Coastal NED Plan



233

235

## PROJECT STRUCTURES

- RESIDENTIAL
- NON-RESIDENTIAL
- WAREHOUSE

Structures identified as preliminarily eligible require additional on-site assessment and must meet certain criteria in order to participate in the nonstructural project. More information about the general nonstructural process can be found in Appendix L. Additional details concerning eligibility criteria will be developed during the design and construction phases.



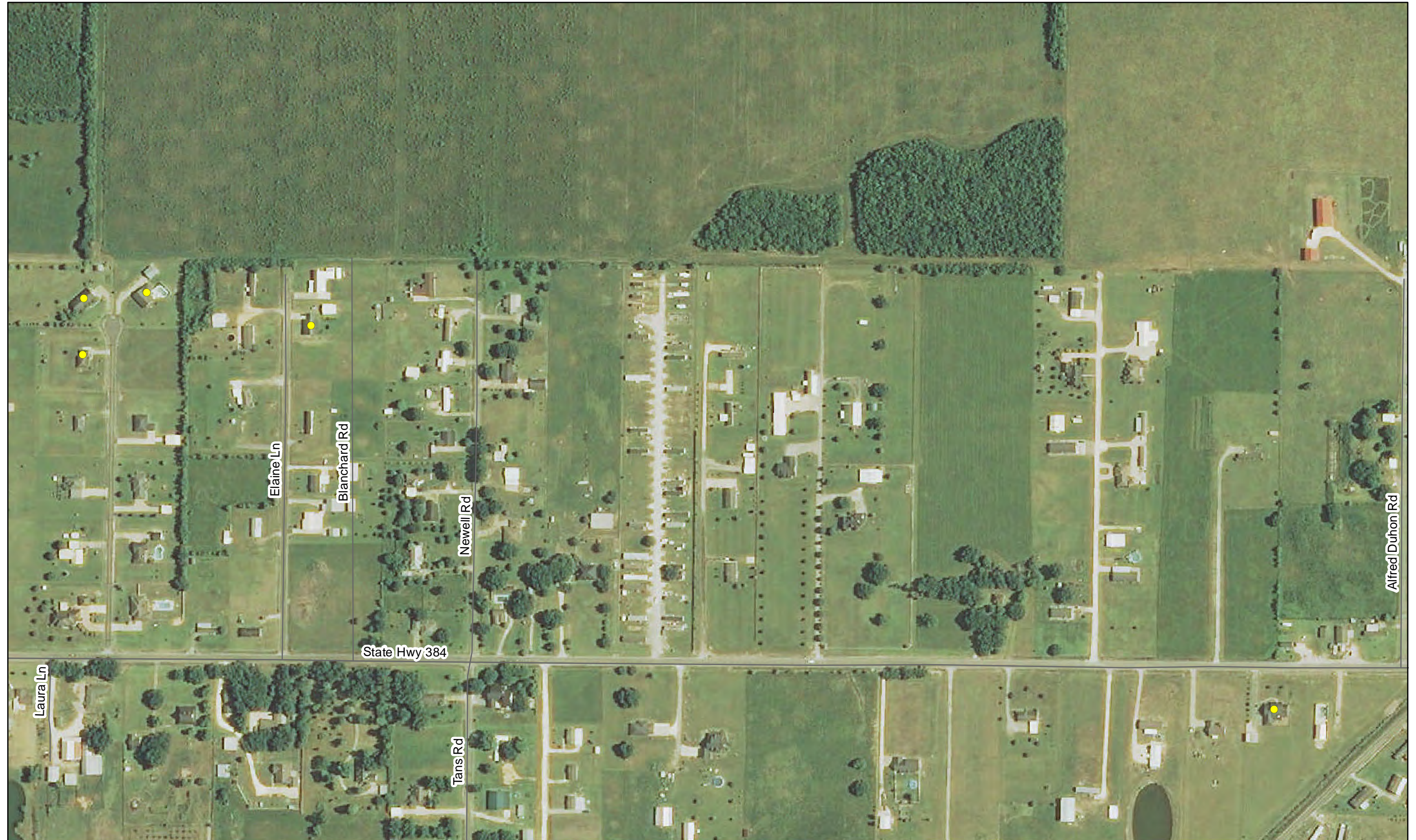
Structure Inventory: Data on study area structures were collected in 2012 via visual assessment.

Imagery: Louisiana NAIP Imagery 2013





# Southwest Coastal NED Plan



234

236

**PROJECT STRUCTURES**

- RESIDENTIAL
- NON-RESIDENTIAL
- WAREHOUSE

Structures identified as preliminarily eligible require additional on-site assessment and must meet certain criteria in order to participate in the nonstructural project. More information about the general nonstructural process can be found in Appendix L. Additional details concerning eligibility criteria will be developed during the design and construction phases.

254



Structure Inventory: Data on study area structures were collected in 2012 via visual assessment.

Imagery: Louisiana NAIP Imagery 2013





# Southwest Coastal NED Plan

235



**PROJECT STRUCTURES**

- RESIDENTIAL
- NON-RESIDENTIAL
- WAREHOUSE

Structures identified as preliminarily eligible require additional on-site assessment and must meet certain criteria in order to participate in the nonstructural project. More information about the general nonstructural process can be found in Appendix L. Additional details concerning eligibility criteria will be developed during the design and construction phases.



Structure Inventory: Data on study area structures were collected in 2012 via visual assessment.

Imagery: Louisiana NAIP Imagery 2013





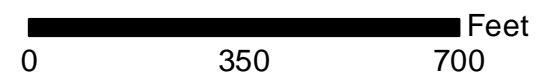
# Southwest Coastal NED Plan



## PROJECT STRUCTURES

- RESIDENTIAL
- NON-RESIDENTIAL
- WAREHOUSE

Structures identified as preliminarily eligible require additional on-site assessment and must meet certain criteria in order to participate in the nonstructural project. More information about the general nonstructural process can be found in Appendix L. Additional details concerning eligibility criteria will be developed during the design and construction phases.



Structure Inventory: Data on study area structures were collected in 2012 via visual assessment.

Imagery: Louisiana NAIP Imagery 2013





# Southwest Coastal NED Plan



## PROJECT STRUCTURES

- RESIDENTIAL
- NON-RESIDENTIAL
- WAREHOUSE

Structures identified as preliminarily eligible require additional on-site assessment and must meet certain criteria in order to participate in the nonstructural project. More information about the general nonstructural process can be found in Appendix L. Additional details concerning eligibility criteria will be developed during the design and construction phases.

255

0 350 700 Feet

Structure Inventory: Data on study area structures were collected in 2012 via visual assessment.

Imagery: Louisiana NAIP Imagery 2013





# Southwest Coastal NED Plan

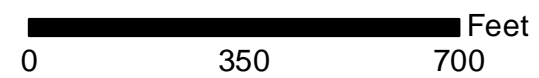


Highway 717

## PROJECT STRUCTURES

- RESIDENTIAL
- NON-RESIDENTIAL
- WAREHOUSE

Structures identified as preliminarily eligible require additional on-site assessment and must meet certain criteria in order to participate in the nonstructural project. More information about the general nonstructural process can be found in Appendix L. Additional details concerning eligibility criteria will be developed during the design and construction phases.



Structure Inventory: Data on study area structures were collected in 2012 via visual assessment.

Imagery: Louisiana NAIP Imagery 2013





# Southwest Coastal NED Plan



## PROJECT STRUCTURES

- RESIDENTIAL
- NON-RESIDENTIAL
- WAREHOUSE

Structures identified as preliminarily eligible require additional on-site assessment and must meet certain criteria in order to participate in the nonstructural project. More information about the general nonstructural process can be found in Appendix L. Additional details concerning eligibility criteria will be developed during the design and construction phases.



Structure Inventory: Data on study area structures were collected in 2012 via visual assessment.

Imagery: Louisiana NAIP Imagery 2013





# Southwest Coastal NED Plan



242

**PROJECT STRUCTURES**

- RESIDENTIAL
- NON-RESIDENTIAL
- WAREHOUSE

Structures identified as preliminarily eligible require additional on-site assessment and must meet certain criteria in order to participate in the nonstructural project. More information about the general nonstructural process can be found in Appendix L. Additional details concerning eligibility criteria will be developed during the design and construction phases.



Structure Inventory: Data on study area structures were collected in 2012 via visual assessment.

Imagery: Louisiana NAIP Imagery 2013





# Southwest Coastal NED Plan



241

243

PROJECT STRUCTURES	
●	RESIDENTIAL
●	NON-RESIDENTIAL
●	WAREHOUSE

Structures identified as preliminarily eligible require additional on-site assessment and must meet certain criteria in order to participate in the nonstructural project. More information about the general nonstructural process can be found in Appendix L. Additional details concerning eligibility criteria will be developed during the design and construction phases.



Structure Inventory: Data on study area structures were collected in 2012 via visual assessment.

Imagery: Louisiana NAIP Imagery 2013





# Southwest Coastal NED Plan

227



242

244

## PROJECT STRUCTURES

- RESIDENTIAL
- NON-RESIDENTIAL
- WAREHOUSE

Structures identified as preliminarily eligible require additional on-site assessment and must meet certain criteria in order to participate in the nonstructural project. More information about the general nonstructural process can be found in Appendix L. Additional details concerning eligibility criteria will be developed during the design and construction phases.



Structure Inventory: Data on study area structures were collected in 2012 via visual assessment.

Imagery: Louisiana NAIP Imagery 2013





# Southwest Coastal NED Plan

243



**PROJECT STRUCTURES**

- RESIDENTIAL
- NON-RESIDENTIAL
- WAREHOUSE

Structures identified as preliminarily eligible require additional on-site assessment and must meet certain criteria in order to participate in the nonstructural project. More information about the general nonstructural process can be found in Appendix L. Additional details concerning eligibility criteria will be developed during the design and construction phases.

258



Structure Inventory: Data on study area structures were collected in 2012 via visual assessment.

Imagery: Louisiana NAIP Imagery 2013





# Southwest Coastal NED Plan



## PROJECT STRUCTURES

- RESIDENTIAL
- NON-RESIDENTIAL
- WAREHOUSE

Structures identified as preliminarily eligible require additional on-site assessment and must meet certain criteria in order to participate in the nonstructural project. More information about the general nonstructural process can be found in Appendix L. Additional details concerning eligibility criteria will be developed during the design and construction phases.

259

0 350 700 Feet

Structure Inventory: Data on study area structures were collected in 2012 via visual assessment.

Imagery: Louisiana NAIP Imagery 2013





# Southwest Coastal NED Plan



247

**PROJECT STRUCTURES**

- RESIDENTIAL
- NON-RESIDENTIAL
- WAREHOUSE

Structures identified as preliminarily eligible require additional on-site assessment and must meet certain criteria in order to participate in the nonstructural project. More information about the general nonstructural process can be found in Appendix L. Additional details concerning eligibility criteria will be developed during the design and construction phases.

260



Structure Inventory: Data on study area structures were collected in 2012 via visual assessment.

Imagery: Louisiana NAIP Imagery 2013





# Southwest Coastal NED Plan

246



## PROJECT STRUCTURES

- RESIDENTIAL
- NON-RESIDENTIAL
- WAREHOUSE

Structures identified as preliminarily eligible require additional on-site assessment and must meet certain criteria in order to participate in the nonstructural project. More information about the general nonstructural process can be found in Appendix L. Additional details concerning eligibility criteria will be developed during the design and construction phases.

261



Structure Inventory: Data on study area structures were collected in 2012 via visual assessment.

Imagery: Louisiana NAIP Imagery 2013





# Southwest Coastal NED Plan

229



249

## PROJECT STRUCTURES

- RESIDENTIAL
- NON-RESIDENTIAL
- WAREHOUSE

Structures identified as preliminarily eligible require additional on-site assessment and must meet certain criteria in order to participate in the nonstructural project. More information about the general nonstructural process can be found in Appendix L. Additional details concerning eligibility criteria will be developed during the design and construction phases.

263



Structure Inventory: Data on study area structures were collected in 2012 via visual assessment.

Imagery: Louisiana NAIP Imagery 2013





# Southwest Coastal NED Plan



248

## PROJECT STRUCTURES

- RESIDENTIAL
- NON-RESIDENTIAL
- WAREHOUSE

Structures identified as preliminarily eligible require additional on-site assessment and must meet certain criteria in order to participate in the nonstructural project. More information about the general nonstructural process can be found in Appendix L. Additional details concerning eligibility criteria will be developed during the design and construction phases.



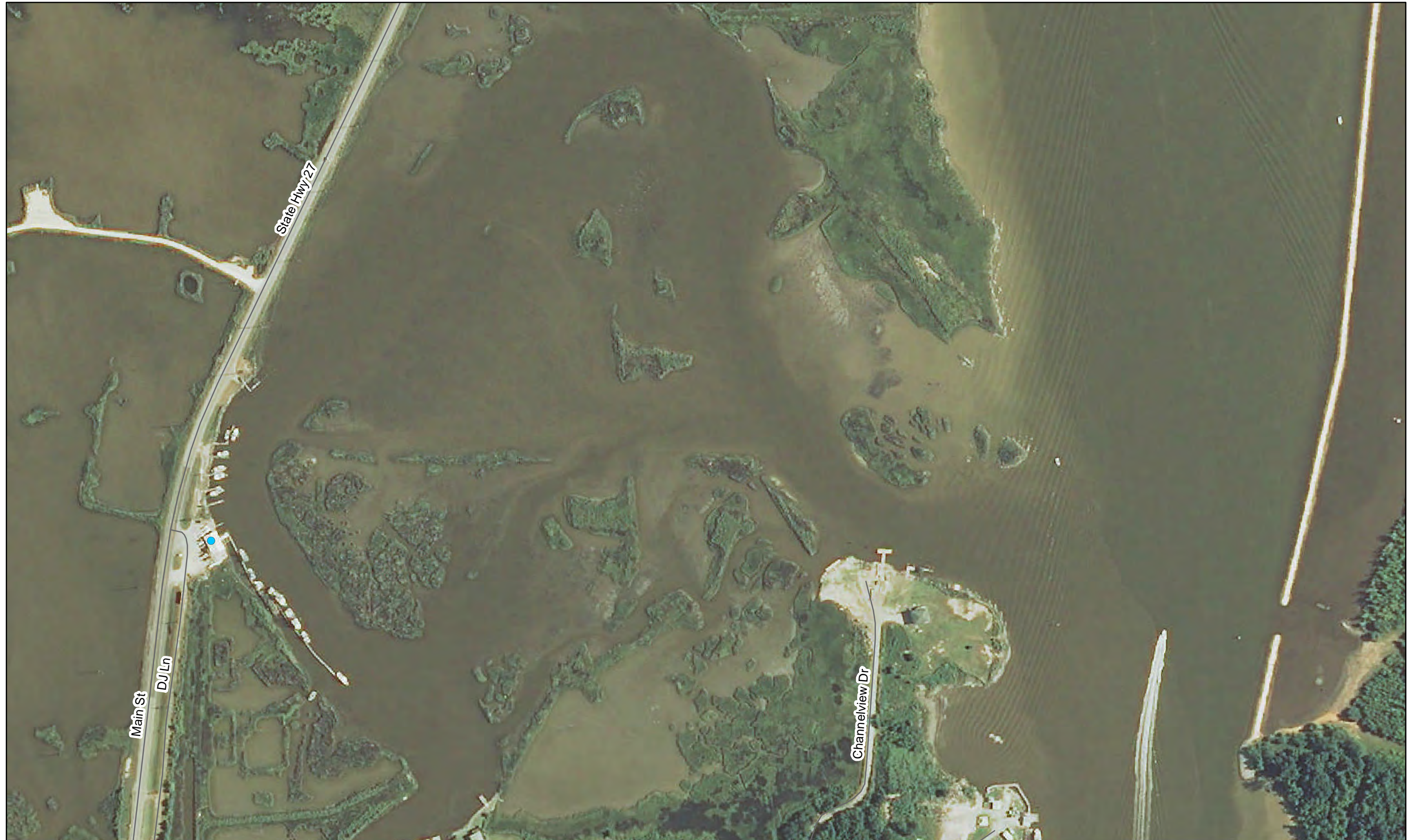
Structure Inventory: Data on study area structures were collected in 2012 via visual assessment.

Imagery: Louisiana NAIP Imagery 2013





# Southwest Coastal NED Plan



## PROJECT STRUCTURES

- RESIDENTIAL
- NON-RESIDENTIAL
- WAREHOUSE

Structures identified as preliminarily eligible require additional on-site assessment and must meet certain criteria in order to participate in the nonstructural project. More information about the general nonstructural process can be found in Appendix L. Additional details concerning eligibility criteria will be developed during the design and construction phases.



Structure Inventory: Data on study area structures were collected in 2012 via visual assessment.

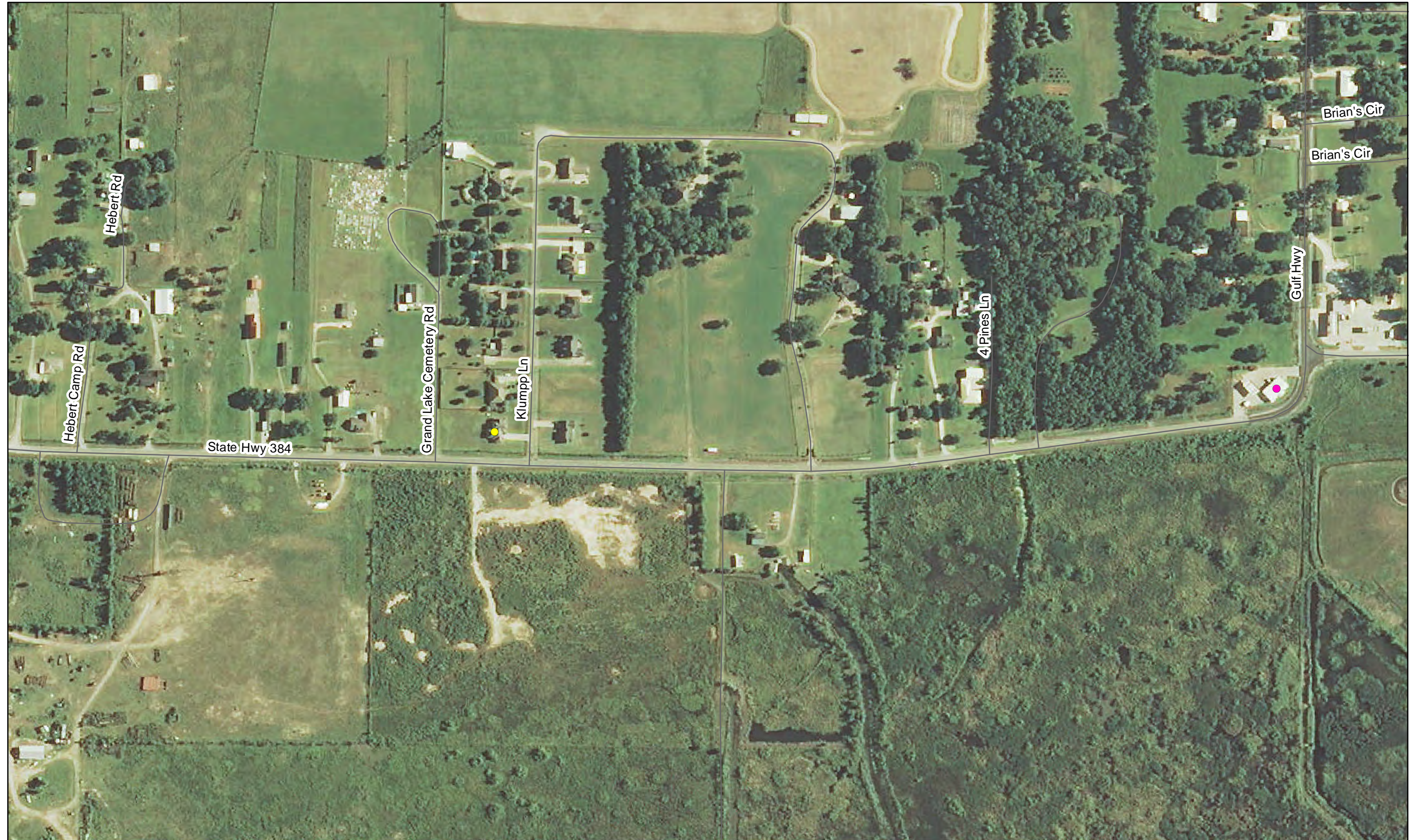
Imagery: Louisiana NAIP Imagery 2013





# Southwest Coastal NED Plan

230



252

## PROJECT STRUCTURES

- RESIDENTIAL
- NON-RESIDENTIAL
- WAREHOUSE

Structures identified as preliminarily eligible require additional on-site assessment and must meet certain criteria in order to participate in the nonstructural project. More information about the general nonstructural process can be found in Appendix L. Additional details concerning eligibility criteria will be developed during the design and construction phases.



Structure Inventory: Data on study area structures were collected in 2012 via visual assessment.

Imagery: Louisiana NAIP Imagery 2013





# Southwest Coastal NED Plan

231



251

## PROJECT STRUCTURES

- RESIDENTIAL
- NON-RESIDENTIAL
- WAREHOUSE

Structures identified as preliminarily eligible require additional on-site assessment and must meet certain criteria in order to participate in the nonstructural project. More information about the general nonstructural process can be found in Appendix L. Additional details concerning eligibility criteria will be developed during the design and construction phases.



Structure Inventory: Data on study area structures were collected in 2012 via visual assessment.

Imagery: Louisiana NAIP Imagery 2013





# Southwest Coastal NED Plan

233

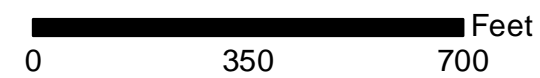


## PROJECT STRUCTURES

- RESIDENTIAL
- NON-RESIDENTIAL
- WAREHOUSE

Structures identified as preliminarily eligible require additional on-site assessment and must meet certain criteria in order to participate in the nonstructural project. More information about the general nonstructural process can be found in Appendix L. Additional details concerning eligibility criteria will be developed during the design and construction phases.

266



Structure Inventory: Data on study area structures were collected in 2012 via visual assessment.

Imagery: Louisiana NAIP Imagery 2013





# Southwest Coastal NED Plan

235



## PROJECT STRUCTURES

- RESIDENTIAL
- NON-RESIDENTIAL
- WAREHOUSE

Structures identified as preliminarily eligible require additional on-site assessment and must meet certain criteria in order to participate in the nonstructural project. More information about the general nonstructural process can be found in Appendix L. Additional details concerning eligibility criteria will be developed during the design and construction phases.

268



Structure Inventory: Data on study area structures were collected in 2012 via visual assessment.

Imagery: Louisiana NAIP Imagery 2013





# Southwest Coastal NED Plan

238



## PROJECT STRUCTURES

- RESIDENTIAL
- NON-RESIDENTIAL
- WAREHOUSE

Structures identified as preliminarily eligible require additional on-site assessment and must meet certain criteria in order to participate in the nonstructural project. More information about the general nonstructural process can be found in Appendix L. Additional details concerning eligibility criteria will be developed during the design and construction phases.

272



Structure Inventory: Data on study area structures were collected in 2012 via visual assessment.

Imagery: Louisiana NAIP Imagery 2013





# Southwest Coastal NED Plan



257

## PROJECT STRUCTURES

- RESIDENTIAL
- NON-RESIDENTIAL
- WAREHOUSE

Structures identified as preliminarily eligible require additional on-site assessment and must meet certain criteria in order to participate in the nonstructural project. More information about the general nonstructural process can be found in Appendix L. Additional details concerning eligibility criteria will be developed during the design and construction phases.

273



Structure Inventory: Data on study area structures were collected in 2012 via visual assessment.

Imagery: Louisiana NAIP Imagery 2013





# Southwest Coastal NED Plan

256



**PROJECT STRUCTURES**

- RESIDENTIAL
- NON-RESIDENTIAL
- WAREHOUSE

Structures identified as preliminarily eligible require additional on-site assessment and must meet certain criteria in order to participate in the nonstructural project. More information about the general nonstructural process can be found in Appendix L. Additional details concerning eligibility criteria will be developed during the design and construction phases.

274



Structure Inventory: Data on study area structures were collected in 2012 via visual assessment.

Imagery: Louisiana NAIP Imagery 2013





# Southwest Coastal NED Plan

244



## PROJECT STRUCTURES

- RESIDENTIAL
- NON-RESIDENTIAL
- WAREHOUSE

Structures identified as preliminarily eligible require additional on-site assessment and must meet certain criteria in order to participate in the nonstructural project. More information about the general nonstructural process can be found in Appendix L. Additional details concerning eligibility criteria will be developed during the design and construction phases.

276



Structure Inventory: Data on study area structures were collected in 2012 via visual assessment.

Imagery: Louisiana NAIP Imagery 2013





# Southwest Coastal NED Plan

245



## PROJECT STRUCTURES

- RESIDENTIAL
- NON-RESIDENTIAL
- WAREHOUSE

Structures identified as preliminarily eligible require additional on-site assessment and must meet certain criteria in order to participate in the nonstructural project. More information about the general nonstructural process can be found in Appendix L. Additional details concerning eligibility criteria will be developed during the design and construction phases.



Structure Inventory: Data on study area structures were collected in 2012 via visual assessment.

Imagery: Louisiana NAIP Imagery 2013





# Southwest Coastal NED Plan

246



261

## PROJECT STRUCTURES

- RESIDENTIAL
- NON-RESIDENTIAL
- WAREHOUSE

Structures identified as preliminarily eligible require additional on-site assessment and must meet certain criteria in order to participate in the nonstructural project. More information about the general nonstructural process can be found in Appendix L. Additional details concerning eligibility criteria will be developed during the design and construction phases.



Structure Inventory: Data on study area structures were collected in 2012 via visual assessment.

Imagery: Louisiana NAIP Imagery 2013





# Southwest Coastal NED Plan

247



260

262

## PROJECT STRUCTURES

- RESIDENTIAL
- NON-RESIDENTIAL
- WAREHOUSE

Structures identified as preliminarily eligible require additional on-site assessment and must meet certain criteria in order to participate in the nonstructural project. More information about the general nonstructural process can be found in Appendix L. Additional details concerning eligibility criteria will be developed during the design and construction phases.



Structure Inventory: Data on study area structures were collected in 2012 via visual assessment.

Imagery: Louisiana NAIP Imagery 2013





# Southwest Coastal NED Plan



261

263

277

## PROJECT STRUCTURES

- RESIDENTIAL
- NON-RESIDENTIAL
- WAREHOUSE

Structures identified as preliminarily eligible require additional on-site assessment and must meet certain criteria in order to participate in the nonstructural project. More information about the general nonstructural process can be found in Appendix L. Additional details concerning eligibility criteria will be developed during the design and construction phases.



Structure Inventory: Data on study area structures were collected in 2012 via visual assessment.

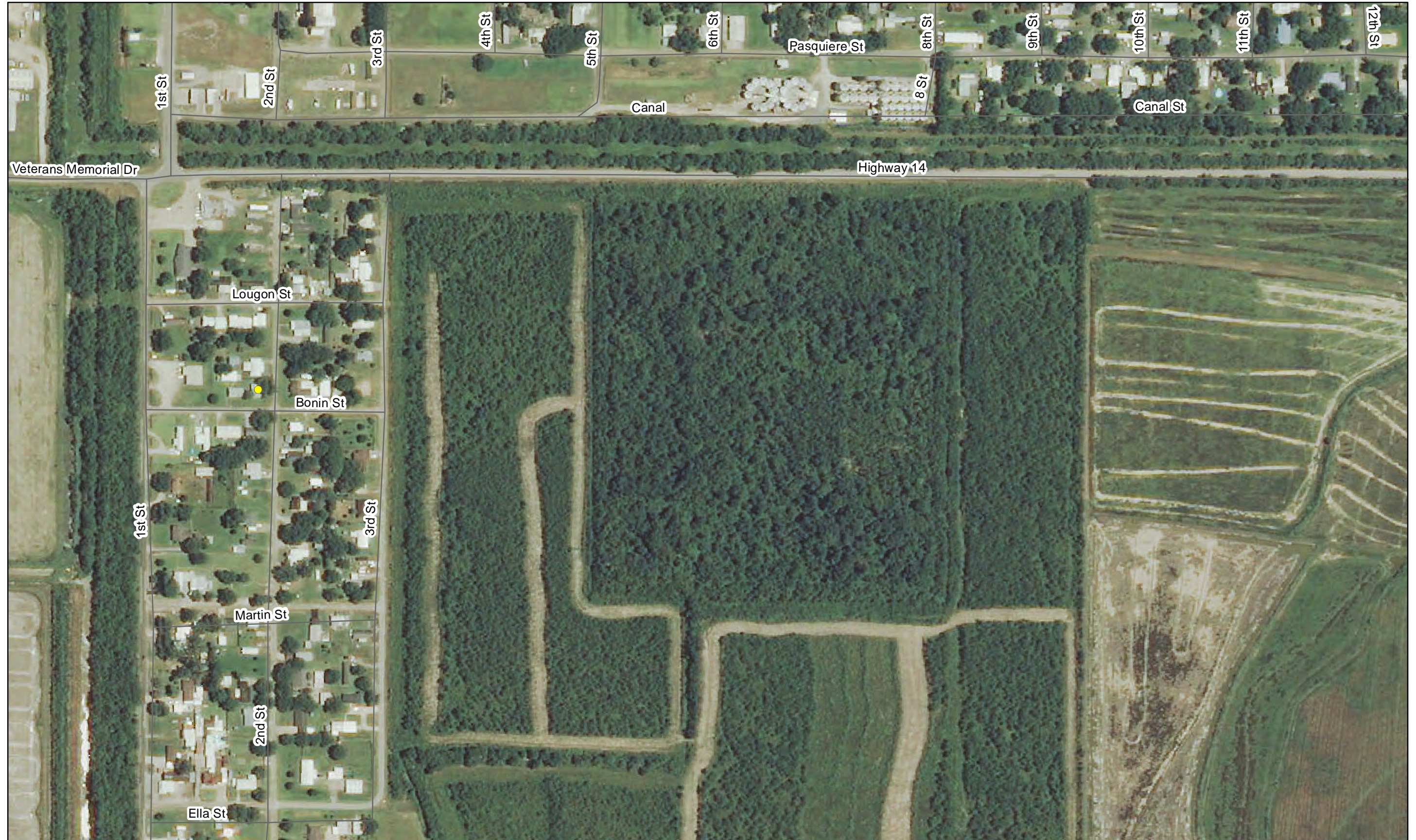
Imagery: Louisiana NAIP Imagery 2013





# Southwest Coastal NED Plan

248

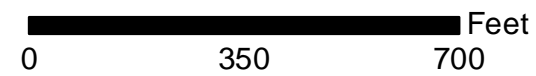


262

## PROJECT STRUCTURES

- RESIDENTIAL
- NON-RESIDENTIAL
- WAREHOUSE

Structures identified as preliminarily eligible require additional on-site assessment and must meet certain criteria in order to participate in the nonstructural project. More information about the general nonstructural process can be found in Appendix L. Additional details concerning eligibility criteria will be developed during the design and construction phases.



Structure Inventory: Data on study area structures were collected in 2012 via visual assessment.

Imagery: Louisiana NAIP Imagery 2013





# Southwest Coastal NED Plan



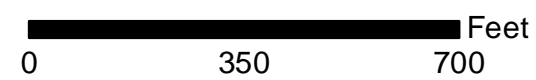
265

## PROJECT STRUCTURES

- RESIDENTIAL
- NON-RESIDENTIAL
- WAREHOUSE

Structures identified as preliminarily eligible require additional on-site assessment and must meet certain criteria in order to participate in the nonstructural project. More information about the general nonstructural process can be found in Appendix L. Additional details concerning eligibility criteria will be developed during the design and construction phases.

279



Structure Inventory: Data on study area structures were collected in 2012 via visual assessment.

Imagery: Louisiana NAIP Imagery 2013





# Southwest Coastal NED Plan

264



**PROJECT STRUCTURES**

- RESIDENTIAL
- NON-RESIDENTIAL
- WAREHOUSE

Structures identified as preliminarily eligible require additional on-site assessment and must meet certain criteria in order to participate in the nonstructural project. More information about the general nonstructural process can be found in Appendix L. Additional details concerning eligibility criteria will be developed during the design and construction phases.

280



Structure Inventory: Data on study area structures were collected in 2012 via visual assessment.

Imagery: Louisiana NAIP Imagery 2013





# Southwest Coastal NED Plan

253

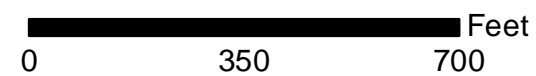


267

## PROJECT STRUCTURES

- RESIDENTIAL
- NON-RESIDENTIAL
- WAREHOUSE

Structures identified as preliminarily eligible require additional on-site assessment and must meet certain criteria in order to participate in the nonstructural project. More information about the general nonstructural process can be found in Appendix L. Additional details concerning eligibility criteria will be developed during the design and construction phases.



Structure Inventory: Data on study area structures were collected in 2012 via visual assessment.

Imagery: Louisiana NAIP Imagery 2013





# Southwest Coastal NED Plan



266

268

## PROJECT STRUCTURES

- RESIDENTIAL
- NON-RESIDENTIAL
- WAREHOUSE

Structures identified as preliminarily eligible require additional on-site assessment and must meet certain criteria in order to participate in the nonstructural project. More information about the general nonstructural process can be found in Appendix L. Additional details concerning eligibility criteria will be developed during the design and construction phases.



Structure Inventory: Data on study area structures were collected in 2012 via visual assessment.

Imagery: Louisiana NAIP Imagery 2013





# Southwest Coastal NED Plan

254



267

## PROJECT STRUCTURES

- RESIDENTIAL
- NON-RESIDENTIAL
- WAREHOUSE

Structures identified as preliminarily eligible require additional on-site assessment and must meet certain criteria in order to participate in the nonstructural project. More information about the general nonstructural process can be found in Appendix L. Additional details concerning eligibility criteria will be developed during the design and construction phases.



Structure Inventory: Data on study area structures were collected in 2012 via visual assessment.

Imagery: Louisiana NAIP Imagery 2013





# Southwest Coastal NED Plan



270

## PROJECT STRUCTURES

- RESIDENTIAL
- NON-RESIDENTIAL
- WAREHOUSE

Structures identified as preliminarily eligible require additional on-site assessment and must meet certain criteria in order to participate in the nonstructural project. More information about the general nonstructural process can be found in Appendix L. Additional details concerning eligibility criteria will be developed during the design and construction phases.

0 350 700 Feet

Structure Inventory: Data on study area structures were collected in 2012 via visual assessment.

Imagery: Louisiana NAIP Imagery 2013





# Southwest Coastal NED Plan



269

## PROJECT STRUCTURES

- RESIDENTIAL
- NON-RESIDENTIAL
- WAREHOUSE

Structures identified as preliminarily eligible require additional on-site assessment and must meet certain criteria in order to participate in the nonstructural project. More information about the general nonstructural process can be found in Appendix L. Additional details concerning eligibility criteria will be developed during the design and construction phases.

284



Structure Inventory: Data on study area structures were collected in 2012 via visual assessment.

Imagery: Louisiana NAIP Imagery 2013





# Southwest Coastal NED Plan



## PROJECT STRUCTURES

- RESIDENTIAL
- NON-RESIDENTIAL
- WAREHOUSE

Structures identified as preliminarily eligible require additional on-site assessment and must meet certain criteria in order to participate in the nonstructural project. More information about the general nonstructural process can be found in Appendix L. Additional details concerning eligibility criteria will be developed during the design and construction phases.



Structure Inventory: Data on study area structures were collected in 2012 via visual assessment.

Imagery: Louisiana NAIP Imagery 2013





# Southwest Coastal NED Plan

255



## PROJECT STRUCTURES

- RESIDENTIAL
- NON-RESIDENTIAL
- WAREHOUSE

Structures identified as preliminarily eligible require additional on-site assessment and must meet certain criteria in order to participate in the nonstructural project. More information about the general nonstructural process can be found in Appendix L. Additional details concerning eligibility criteria will be developed during the design and construction phases.

287

0 350 700 Feet

Structure Inventory: Data on study area structures were collected in 2012 via visual assessment.

Imagery: Louisiana NAIP Imagery 2013





# Southwest Coastal NED Plan

256



274

## PROJECT STRUCTURES

- RESIDENTIAL
- NON-RESIDENTIAL
- WAREHOUSE

Structures identified as preliminarily eligible require additional on-site assessment and must meet certain criteria in order to participate in the nonstructural project. More information about the general nonstructural process can be found in Appendix L. Additional details concerning eligibility criteria will be developed during the design and construction phases.

288



Structure Inventory: Data on study area structures were collected in 2012 via visual assessment.

Imagery: Louisiana NAIP Imagery 2013





# Southwest Coastal NED Plan

257

273



Parish Road 113

## PROJECT STRUCTURES

- RESIDENTIAL
- NON-RESIDENTIAL
- WAREHOUSE

Structures identified as preliminarily eligible require additional on-site assessment and must meet certain criteria in order to participate in the nonstructural project. More information about the general nonstructural process can be found in Appendix L. Additional details concerning eligibility criteria will be developed during the design and construction phases.



Structure Inventory: Data on study area structures were collected in 2012 via visual assessment.

Imagery: Louisiana NAIP Imagery 2013





# Southwest Coastal NED Plan

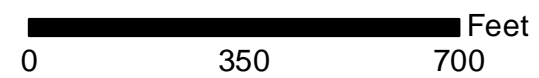


## PROJECT STRUCTURES

- RESIDENTIAL
- NON-RESIDENTIAL
- WAREHOUSE

Structures identified as preliminarily eligible require additional on-site assessment and must meet certain criteria in order to participate in the nonstructural project. More information about the general nonstructural process can be found in Appendix L. Additional details concerning eligibility criteria will be developed during the design and construction phases.

289



Structure Inventory: Data on study area structures were collected in 2012 via visual assessment.

Imagery: Louisiana NAIP Imagery 2013





# Southwest Coastal NED Plan

258

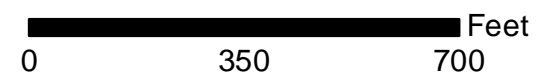


## PROJECT STRUCTURES

- RESIDENTIAL
- NON-RESIDENTIAL
- WAREHOUSE

Structures identified as preliminarily eligible require additional on-site assessment and must meet certain criteria in order to participate in the nonstructural project. More information about the general nonstructural process can be found in Appendix L. Additional details concerning eligibility criteria will be developed during the design and construction phases.

291



Structure Inventory: Data on study area structures were collected in 2012 via visual assessment.

Imagery: Louisiana NAIP Imagery 2013





# Southwest Coastal NED Plan

262



## PROJECT STRUCTURES

- RESIDENTIAL
- NON-RESIDENTIAL
- WAREHOUSE

Structures identified as preliminarily eligible require additional on-site assessment and must meet certain criteria in order to participate in the nonstructural project. More information about the general nonstructural process can be found in Appendix L. Additional details concerning eligibility criteria will be developed during the design and construction phases.



Structure Inventory: Data on study area structures were collected in 2012 via visual assessment.

Imagery: Louisiana NAIP Imagery 2013





# Southwest Coastal NED Plan



279

**PROJECT STRUCTURES**

- RESIDENTIAL
- NON-RESIDENTIAL
- WAREHOUSE

Structures identified as preliminarily eligible require additional on-site assessment and must meet certain criteria in order to participate in the nonstructural project. More information about the general nonstructural process can be found in Appendix L. Additional details concerning eligibility criteria will be developed during the design and construction phases.



Structure Inventory: Data on study area structures were collected in 2012 via visual assessment.

Imagery: Louisiana NAIP Imagery 2013





# Southwest Coastal NED Plan

264



278

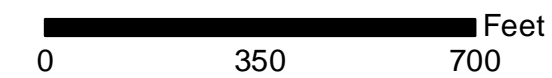
280

295

## PROJECT STRUCTURES

- RESIDENTIAL
- NON-RESIDENTIAL
- WAREHOUSE

Structures identified as preliminarily eligible require additional on-site assessment and must meet certain criteria in order to participate in the nonstructural project. More information about the general nonstructural process can be found in Appendix L. Additional details concerning eligibility criteria will be developed during the design and construction phases.



Structure Inventory: Data on study area structures were collected in 2012 via visual assessment.

Imagery: Louisiana NAIP Imagery 2013





# Southwest Coastal NED Plan

265



279

## PROJECT STRUCTURES

- RESIDENTIAL
- NON-RESIDENTIAL
- WAREHOUSE

Structures identified as preliminarily eligible require additional on-site assessment and must meet certain criteria in order to participate in the nonstructural project. More information about the general nonstructural process can be found in Appendix L. Additional details concerning eligibility criteria will be developed during the design and construction phases.



Structure Inventory: Data on study area structures were collected in 2012 via visual assessment.

Imagery: Louisiana NAIP Imagery 2013





# Southwest Coastal NED Plan



**PROJECT STRUCTURES**

- RESIDENTIAL
- NON-RESIDENTIAL
- WAREHOUSE

Structures identified as preliminarily eligible require additional on-site assessment and must meet certain criteria in order to participate in the nonstructural project. More information about the general nonstructural process can be found in Appendix L. Additional details concerning eligibility criteria will be developed during the design and construction phases.

297



Structure Inventory: Data on study area structures were collected in 2012 via visual assessment.

Imagery: Louisiana NAIP Imagery 2013





# Southwest Coastal NED Plan



283

**PROJECT STRUCTURES**

- RESIDENTIAL
- NON-RESIDENTIAL
- WAREHOUSE

Structures identified as preliminarily eligible require additional on-site assessment and must meet certain criteria in order to participate in the nonstructural project. More information about the general nonstructural process can be found in Appendix L. Additional details concerning eligibility criteria will be developed during the design and construction phases.



Structure Inventory: Data on study area structures were collected in 2012 via visual assessment.

Imagery: Louisiana NAIP Imagery 2013





# Southwest Coastal NED Plan



282

## PROJECT STRUCTURES

- RESIDENTIAL
- NON-RESIDENTIAL
- WAREHOUSE

Structures identified as preliminarily eligible require additional on-site assessment and must meet certain criteria in order to participate in the nonstructural project. More information about the general nonstructural process can be found in Appendix L. Additional details concerning eligibility criteria will be developed during the design and construction phases.



Structure Inventory: Data on study area structures were collected in 2012 via visual assessment.

Imagery: Louisiana NAIP Imagery 2013





# Southwest Coastal NED Plan

270



285

## PROJECT STRUCTURES

- RESIDENTIAL
- NON-RESIDENTIAL
- WAREHOUSE

Structures identified as preliminarily eligible require additional on-site assessment and must meet certain criteria in order to participate in the nonstructural project. More information about the general nonstructural process can be found in Appendix L. Additional details concerning eligibility criteria will be developed during the design and construction phases.

0 350 700 Feet

Structure Inventory: Data on study area structures were collected in 2012 via visual assessment.

Imagery: Louisiana NAIP Imagery 2013

Page 284 of 568





# Southwest Coastal NED Plan



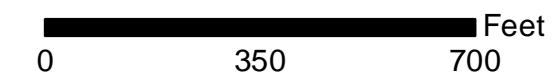
284

298

**PROJECT STRUCTURES**

- RESIDENTIAL
- NON-RESIDENTIAL
- WAREHOUSE

Structures identified as preliminarily eligible require additional on-site assessment and must meet certain criteria in order to participate in the nonstructural project. More information about the general nonstructural process can be found in Appendix L. Additional details concerning eligibility criteria will be developed during the design and construction phases.



Structure Inventory: Data on study area structures were collected in 2012 via visual assessment.

Imagery: Louisiana NAIP Imagery 2013





# Southwest Coastal NED Plan



**PROJECT STRUCTURES**

- RESIDENTIAL
- NON-RESIDENTIAL
- WAREHOUSE

Structures identified as preliminarily eligible require additional on-site assessment and must meet certain criteria in order to participate in the nonstructural project. More information about the general nonstructural process can be found in Appendix L. Additional details concerning eligibility criteria will be developed during the design and construction phases.

299



Structure Inventory: Data on study area structures were collected in 2012 via visual assessment.

Imagery: Louisiana NAIP Imagery 2013





# Southwest Coastal NED Plan

272



## PROJECT STRUCTURES

- RESIDENTIAL
- NON-RESIDENTIAL
- WAREHOUSE

Structures identified as preliminarily eligible require additional on-site assessment and must meet certain criteria in order to participate in the nonstructural project. More information about the general nonstructural process can be found in Appendix L. Additional details concerning eligibility criteria will be developed during the design and construction phases.



Structure Inventory: Data on study area structures were collected in 2012 via visual assessment.

Imagery: Louisiana NAIP Imagery 2013





# Southwest Coastal NED Plan

273



## PROJECT STRUCTURES

- RESIDENTIAL
- NON-RESIDENTIAL
- WAREHOUSE

Structures identified as preliminarily eligible require additional on-site assessment and must meet certain criteria in order to participate in the nonstructural project. More information about the general nonstructural process can be found in Appendix L. Additional details concerning eligibility criteria will be developed during the design and construction phases.

0 350 700 Feet

Structure Inventory: Data on study area structures were collected in 2012 via visual assessment.

Imagery: Louisiana NAIP Imagery 2013





# Southwest Coastal NED Plan

275



## PROJECT STRUCTURES

- RESIDENTIAL
- NON-RESIDENTIAL
- WAREHOUSE

Structures identified as preliminarily eligible require additional on-site assessment and must meet certain criteria in order to participate in the nonstructural project. More information about the general nonstructural process can be found in Appendix L. Additional details concerning eligibility criteria will be developed during the design and construction phases.



Structure Inventory: Data on study area structures were collected in 2012 via visual assessment.

Imagery: Louisiana NAIP Imagery 2013





# Southwest Coastal NED Plan



## PROJECT STRUCTURES

- RESIDENTIAL
- NON-RESIDENTIAL
- WAREHOUSE

Structures identified as preliminarily eligible require additional on-site assessment and must meet certain criteria in order to participate in the nonstructural project. More information about the general nonstructural process can be found in Appendix L. Additional details concerning eligibility criteria will be developed during the design and construction phases.

303

0 350 700 Feet

Structure Inventory: Data on study area structures were collected in 2012 via visual assessment.

Imagery: Louisiana NAIP Imagery 2013





# Southwest Coastal NED Plan

276



## PROJECT STRUCTURES

- RESIDENTIAL
- NON-RESIDENTIAL
- WAREHOUSE

Structures identified as preliminarily eligible require additional on-site assessment and must meet certain criteria in order to participate in the nonstructural project. More information about the general nonstructural process can be found in Appendix L. Additional details concerning eligibility criteria will be developed during the design and construction phases.

306



Structure Inventory: Data on study area structures were collected in 2012 via visual assessment.

Imagery: Louisiana NAIP Imagery 2013





# Southwest Coastal NED Plan



**PROJECT STRUCTURES**

- RESIDENTIAL
- NON-RESIDENTIAL
- WAREHOUSE

Structures identified as preliminarily eligible require additional on-site assessment and must meet certain criteria in order to participate in the nonstructural project. More information about the general nonstructural process can be found in Appendix L. Additional details concerning eligibility criteria will be developed during the design and construction phases.

307



Structure Inventory: Data on study area structures were collected in 2012 via visual assessment.

Imagery: Louisiana NAIP Imagery 2013





# Southwest Coastal NED Plan



## PROJECT STRUCTURES

- RESIDENTIAL
- NON-RESIDENTIAL
- WAREHOUSE

Structures identified as preliminarily eligible require additional on-site assessment and must meet certain criteria in order to participate in the nonstructural project. More information about the general nonstructural process can be found in Appendix L. Additional details concerning eligibility criteria will be developed during the design and construction phases.



Structure Inventory: Data on study area structures were collected in 2012 via visual assessment.

Imagery: Louisiana NAIP Imagery 2013





# Southwest Coastal NED Plan



## PROJECT STRUCTURES

- RESIDENTIAL
- NON-RESIDENTIAL
- WAREHOUSE

Structures identified as preliminarily eligible require additional on-site assessment and must meet certain criteria in order to participate in the nonstructural project. More information about the general nonstructural process can be found in Appendix L. Additional details concerning eligibility criteria will be developed during the design and construction phases.



Structure Inventory: Data on study area structures were collected in 2012 via visual assessment.

Imagery: Louisiana NAIP Imagery 2013





# Southwest Coastal NED Plan

279

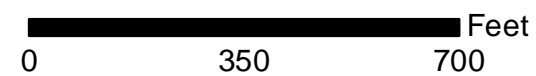


## PROJECT STRUCTURES

- RESIDENTIAL
- NON-RESIDENTIAL
- WAREHOUSE

Structures identified as preliminarily eligible require additional on-site assessment and must meet certain criteria in order to participate in the nonstructural project. More information about the general nonstructural process can be found in Appendix L. Additional details concerning eligibility criteria will be developed during the design and construction phases.

308



Structure Inventory: Data on study area structures were collected in 2012 via visual assessment.

Imagery: Louisiana NAIP Imagery 2013





# Southwest Coastal NED Plan



**PROJECT STRUCTURES**

- RESIDENTIAL
- NON-RESIDENTIAL
- WAREHOUSE

Structures identified as preliminarily eligible require additional on-site assessment and must meet certain criteria in order to participate in the nonstructural project. More information about the general nonstructural process can be found in Appendix L. Additional details concerning eligibility criteria will be developed during the design and construction phases.



Structure Inventory: Data on study area structures were collected in 2012 via visual assessment.

Imagery: Louisiana NAIP Imagery 2013





# Southwest Coastal NED Plan

281



**PROJECT STRUCTURES**

- RESIDENTIAL
- NON-RESIDENTIAL
- WAREHOUSE

Structures identified as preliminarily eligible require additional on-site assessment and must meet certain criteria in order to participate in the nonstructural project. More information about the general nonstructural process can be found in Appendix L. Additional details concerning eligibility criteria will be developed during the design and construction phases.

310



Structure Inventory: Data on study area structures were collected in 2012 via visual assessment.

Imagery: Louisiana NAIP Imagery 2013





# Southwest Coastal NED Plan

285



## PROJECT STRUCTURES

- RESIDENTIAL
- NON-RESIDENTIAL
- WAREHOUSE

Structures identified as preliminarily eligible require additional on-site assessment and must meet certain criteria in order to participate in the nonstructural project. More information about the general nonstructural process can be found in Appendix L. Additional details concerning eligibility criteria will be developed during the design and construction phases.

0 350 700 Feet

Structure Inventory: Data on study area structures were collected in 2012 via visual assessment.

Imagery: Louisiana NAIP Imagery 2013





# Southwest Coastal NED Plan

286



300

## PROJECT STRUCTURES

- RESIDENTIAL
- NON-RESIDENTIAL
- WAREHOUSE

Structures identified as preliminarily eligible require additional on-site assessment and must meet certain criteria in order to participate in the nonstructural project. More information about the general nonstructural process can be found in Appendix L. Additional details concerning eligibility criteria will be developed during the design and construction phases.



Structure Inventory: Data on study area structures were collected in 2012 via visual assessment.

Imagery: Louisiana NAIP Imagery 2013





# Southwest Coastal NED Plan



299

**PROJECT STRUCTURES**

- RESIDENTIAL
- NON-RESIDENTIAL
- WAREHOUSE

Structures identified as preliminarily eligible require additional on-site assessment and must meet certain criteria in order to participate in the nonstructural project. More information about the general nonstructural process can be found in Appendix L. Additional details concerning eligibility criteria will be developed during the design and construction phases.



Structure Inventory: Data on study area structures were collected in 2012 via visual assessment.

Imagery: Louisiana NAIP Imagery 2013

