

# West Shore Lake Pontchartrain, Louisiana Hurricane and Storm Damage Risk Reduction Project

## Neighborhood Focus Meeting

May 21, 2013  
US Army Corps of Engineers



**BUILDING STRONG®**

# USACE Points of Contact

- Project Manager:
  - ▶ Jeffrey Varisco – (504) 862-2853
  - ▶ [Jeffrey.J.Varisco@usace.army.mil](mailto:Jeffrey.J.Varisco@usace.army.mil)
- Project Planner:
  - ▶ Jerica Richardson – (504) 862-2038
  - ▶ [Jerica.M.Richardson@usace.army.mil](mailto:Jerica.M.Richardson@usace.army.mil)
- Web
  - ▶ [www.mvn.usace.army.mil](http://www.mvn.usace.army.mil)
- Public Affairs Office
  - ▶ 504-862-2201
  - ▶ [askthecorps@usace.army.mil](mailto:askthecorps@usace.army.mil)



# Purpose

- Present project background, study objectives and study alternatives.
- Present information on Executive Order 12898.



# WSLP Study Authorities

- July 29, 1971, by the Committee on Public Works of the U.S. House of Representatives and reads:

“RESOLVED BY THE COMMITTEE ON PUBLIC WORKS OF THE HOUSE OF REPRESENTATIVES, UNITED STATES, that the Board of Engineer's for Rivers and Harbors is hereby requested to review the report of the Chief of Engineers on Lake Pontchartrain and Vicinity, Louisiana, published as House Document No. 231, 89<sup>th</sup> Congress, First Session, and other pertinent reports, with a view to determining whether modifications to the recommendations contained therein are advisable at this time, with particular reference to providing additional levees for hurricane protection and flood control in St. John the Baptist Parish and that part of St. Charles Parish west of the Bonnet Carre' Spillway.”

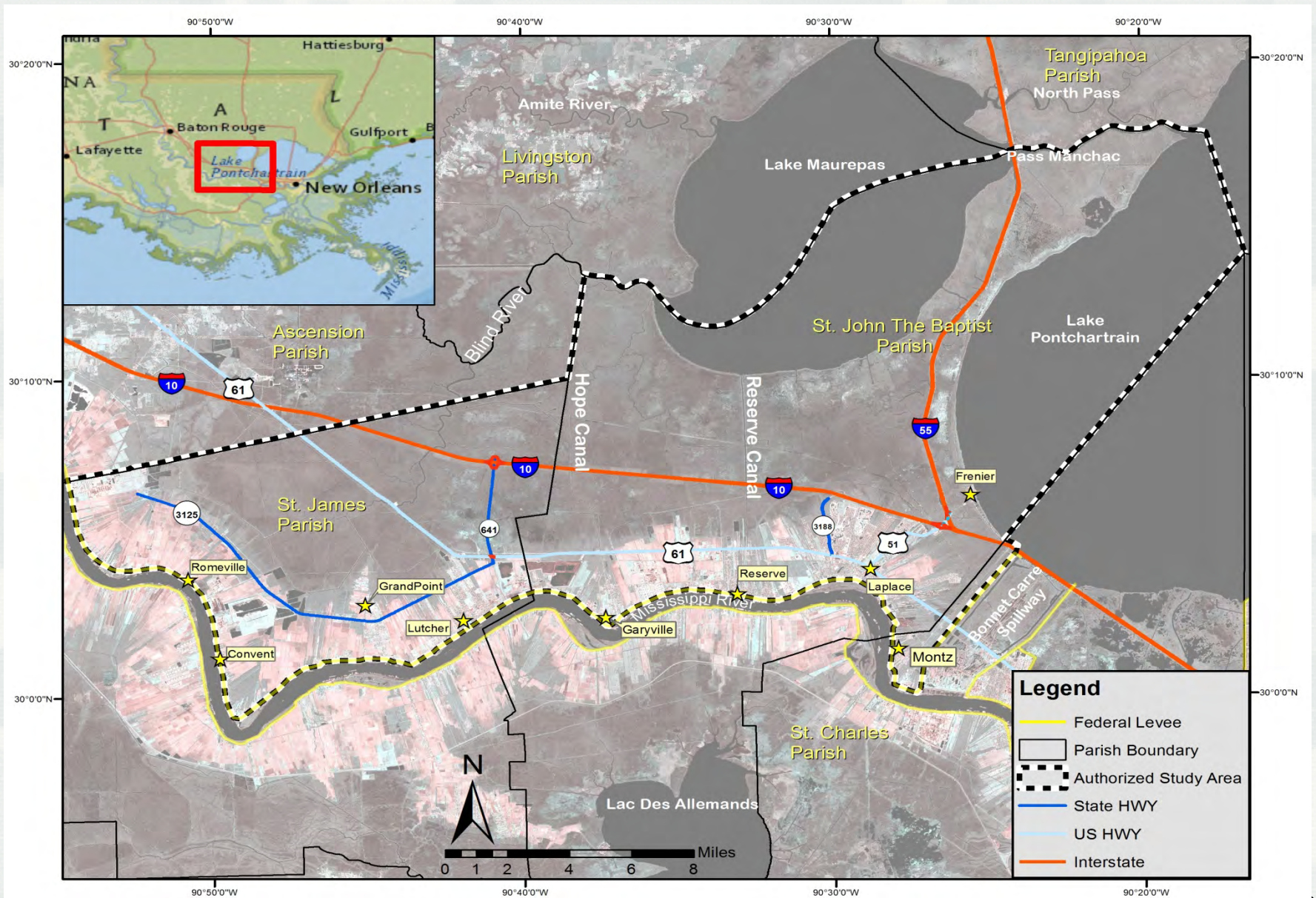
- September 20, 1974, was adopted by the Committee on Public Works of the U.S. Senate and reads:

"RESOLVED BY THE COMMITTEE ON PUBLIC WORKS OF THE UNITED STATES SENATE, that the Board for Rivers and Harbors is hereby requested to review the report of the Chief of Engineers on Lake Pontchartrain and Vicinity, Louisiana, published as House Document No. 231, 89th Congress, First Session, and other pertinent reports, with a view to determining whether modifications to the recommendations contained therein are advisable at this time, for hurricane protection and flood control in St. James Parish."

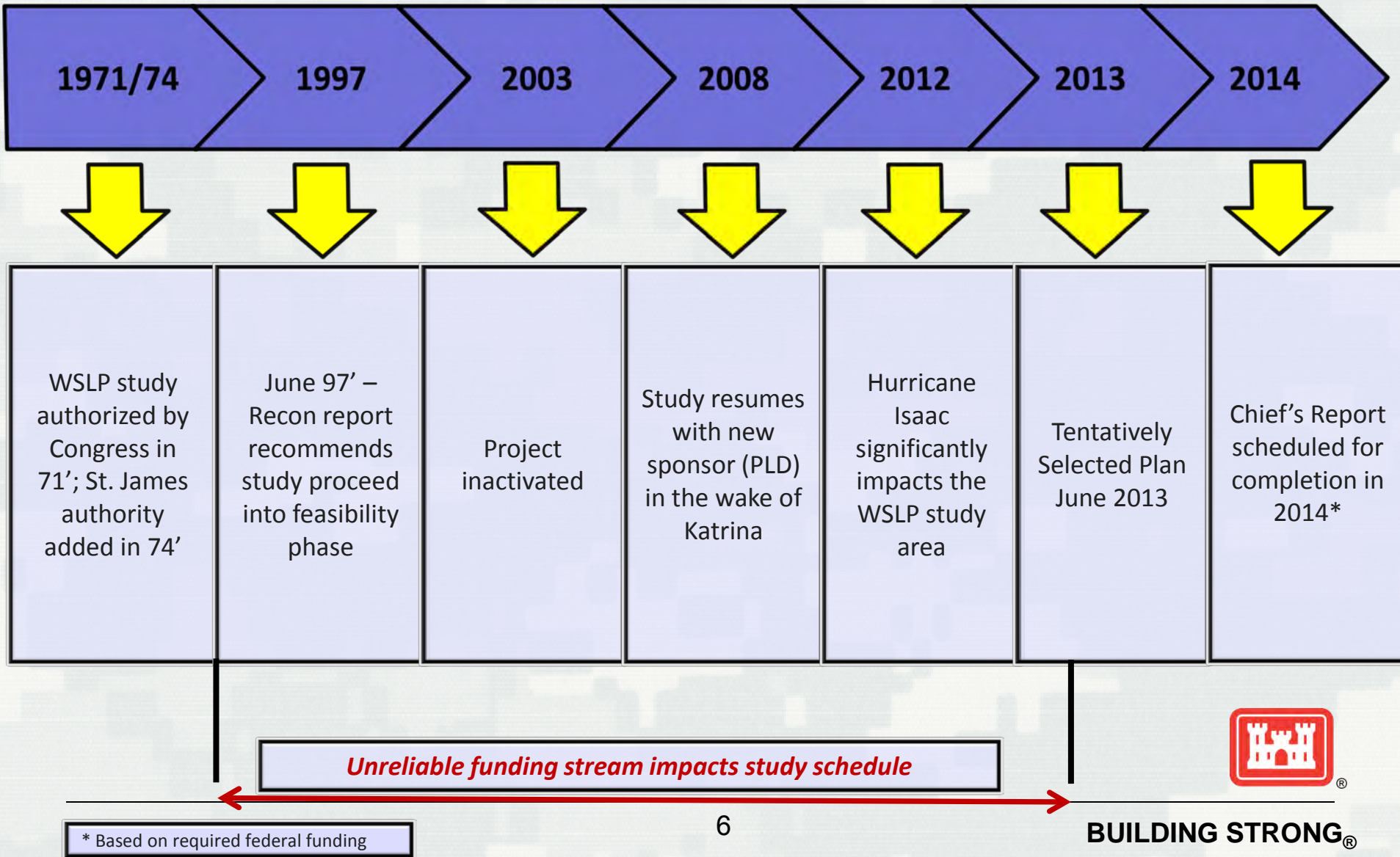




# WSLP Study Area



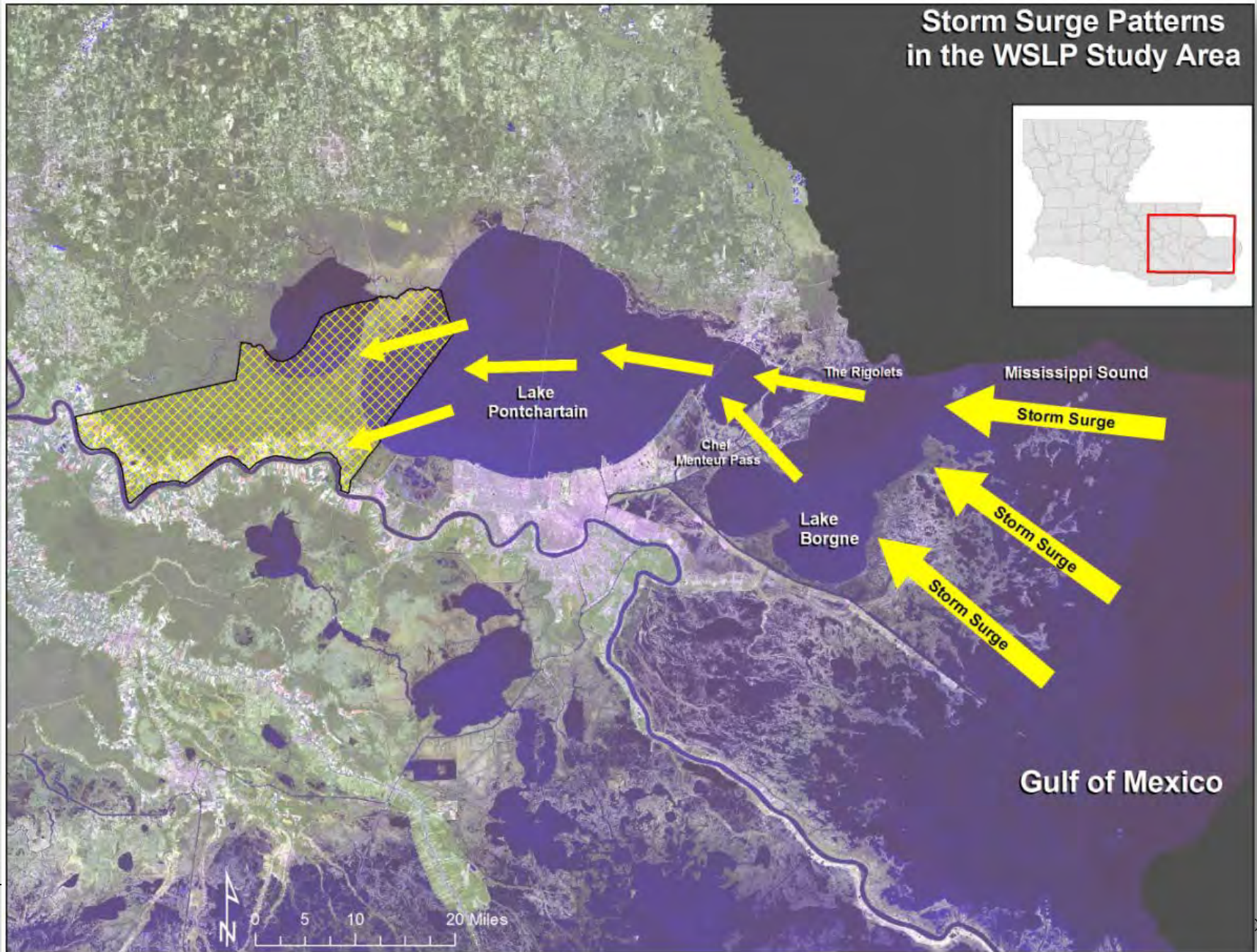
# West Shore Chronology





# Storm Surge Patterns

Storm Surge Patterns  
in the WSLP Study Area



# Study Objectives

1. Reduce hurricane storm surge related damages.
2. Reduce flood risk to life, health, and welfare of residents by decreasing flooding to the maximum extent practical.
3. Increase public awareness of hurricane risks in developed flood prone areas.
4. Enhance public awareness of the risk to life and property of development in flood prone areas.
5. Reduce the risk of damage to critical infrastructure, specifically the I-10/I-55 hurricane evacuation routes, which would decrease the risk to life, health and welfare of the residents of southeastern Louisiana.



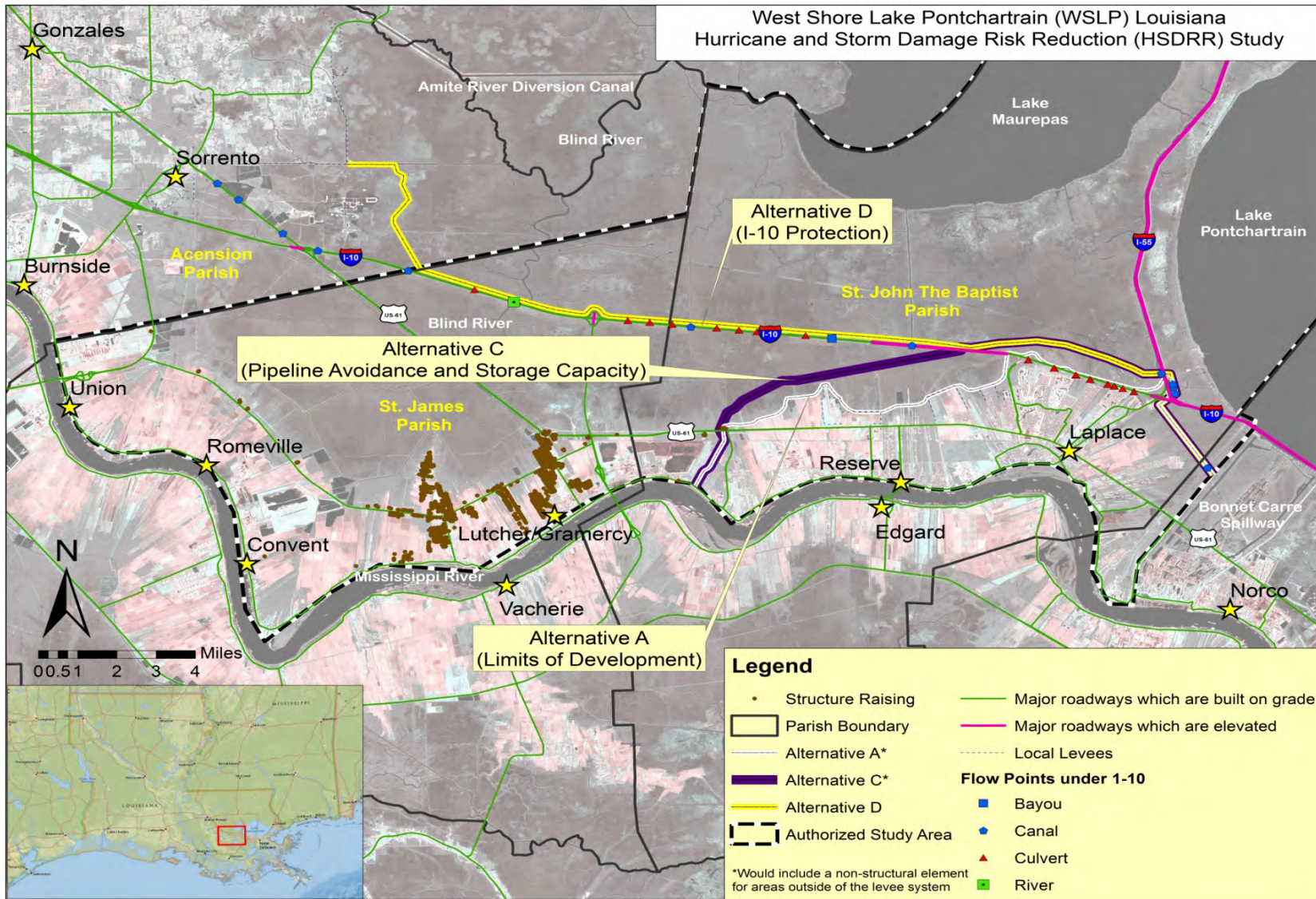


# Final Array of Alternatives

- No Action Alternative.
- Alternative A: Spillway to Hope Canal/MS River and Non-Structural Alternative.
- Alternative C: Spillway to Hope Canal/MS River (Pipeline Avoidance) and Non-Structural Alternative.
- Alternative D: Spillway to Ascension Parish (I-10 Protection).



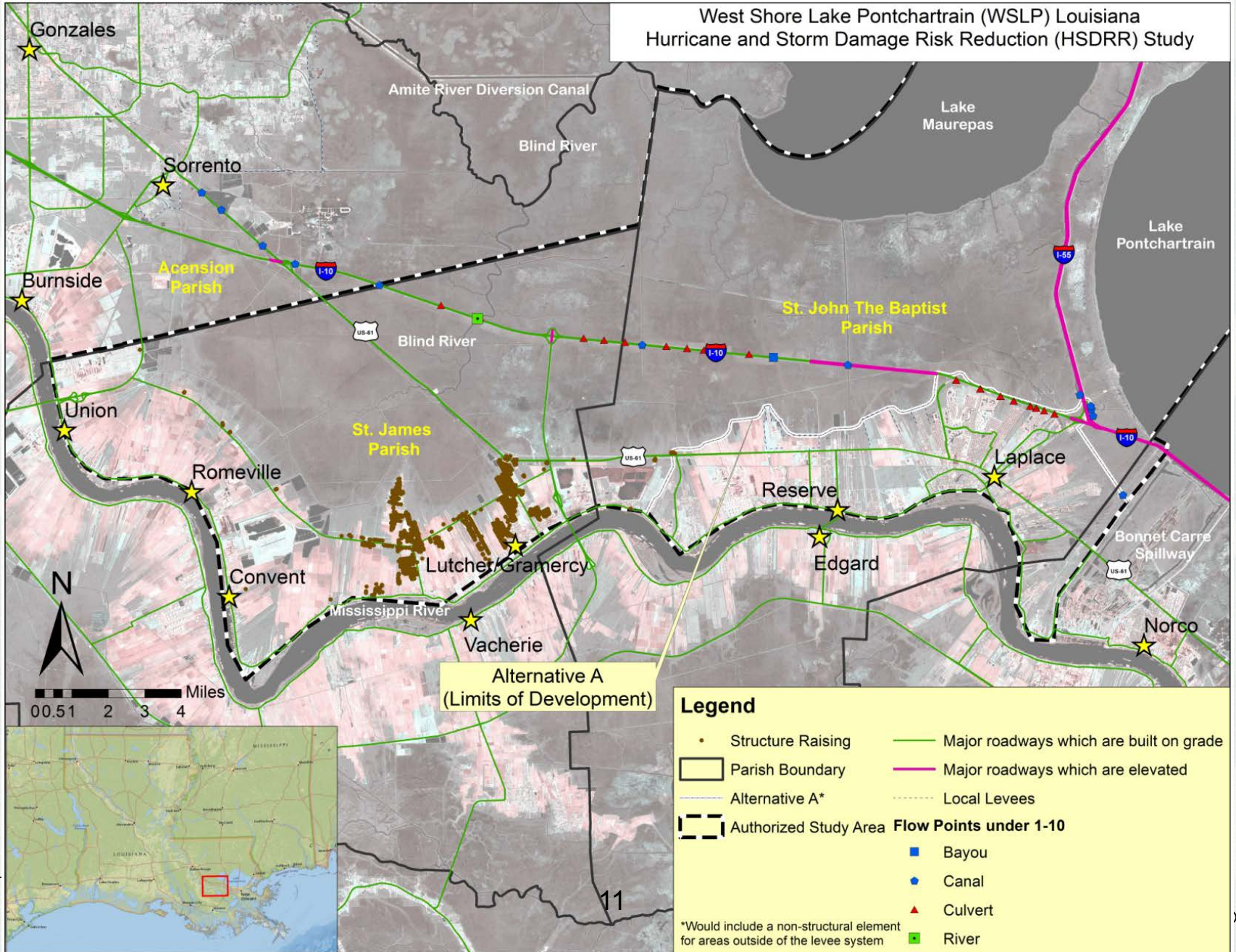
# Final Array Overview





# Alternative A

West Shore Lake Pontchartrain (WSLP) Louisiana Hurricane and Storm Damage Risk Reduction (HSDRR) Study



## Legend

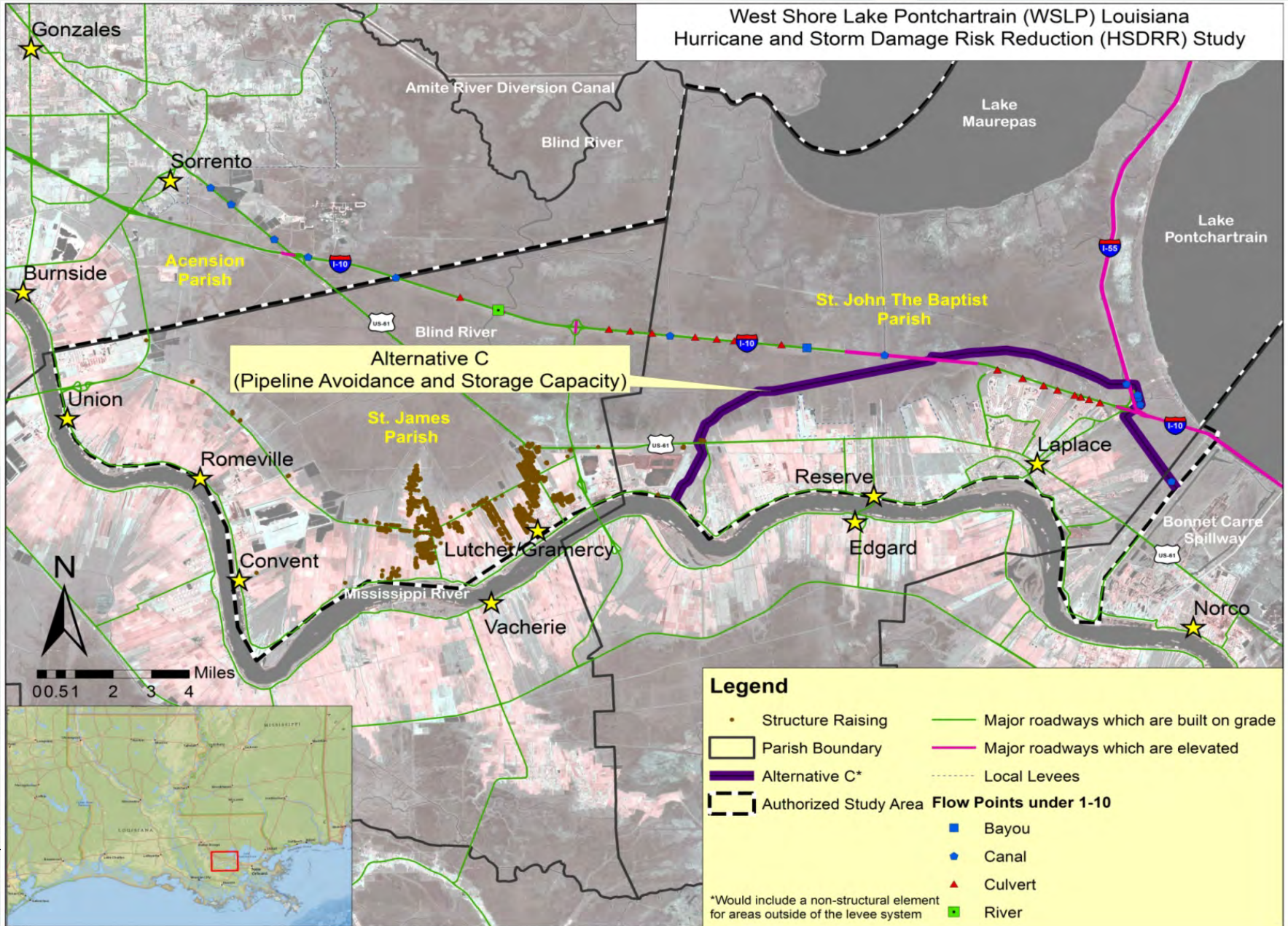
- Structure Raising
- ▭ Parish Boundary
- Alternative A\*
- ▭ Authorized Study Area
- Major roadways which are built on grade
- Major roadways which are elevated
- ⋯ Local Levees
- Flow Points under 1-10**
- Bayou
- ◆ Canal
- ▲ Culvert
- River

\*Would include a non-structural element for areas outside of the levee system



# Alternative C

West Shore Lake Pontchartrain (WSLP) Louisiana  
Hurricane and Storm Damage Risk Reduction (HSDRR) Study



**Alternative C**  
(Pipeline Avoidance and Storage Capacity)

## Legend

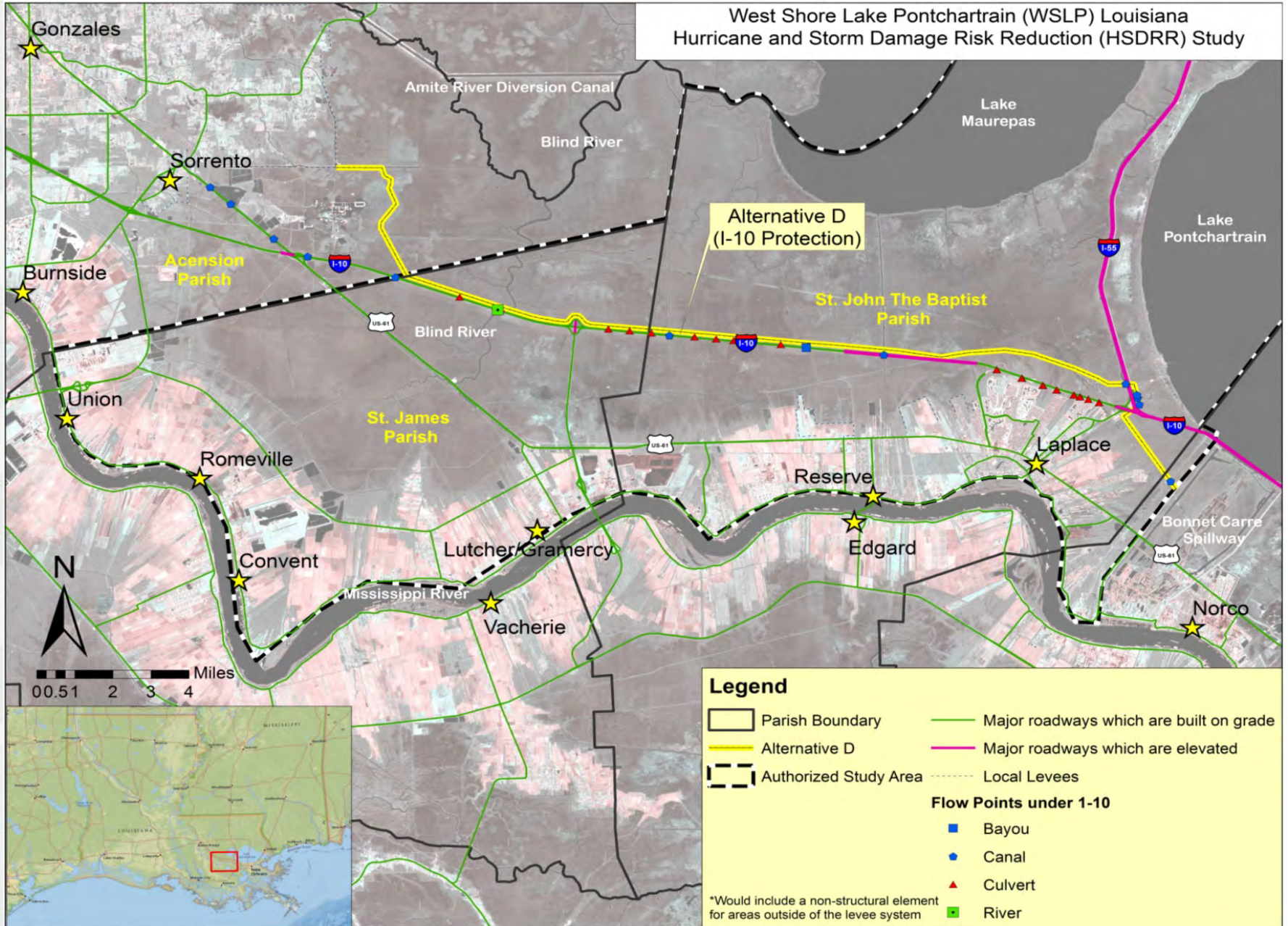
- Structure Raising
- ▭ Parish Boundary
- ▬ Alternative C\*
- ▭ Authorized Study Area
- ▬ Major roadways which are built on grade
- ▬ Major roadways which are elevated
- ▬ Local Levees
- Flow Points under I-10**
- Bayou
- Canal
- ▲ Culvert
- River

\*Would include a non-structural element for areas outside of the levee system



# Alternative D

West Shore Lake Pontchartrain (WSLP) Louisiana  
Hurricane and Storm Damage Risk Reduction (HSDRR) Study



Alternative D  
(I-10 Protection)

**Legend**

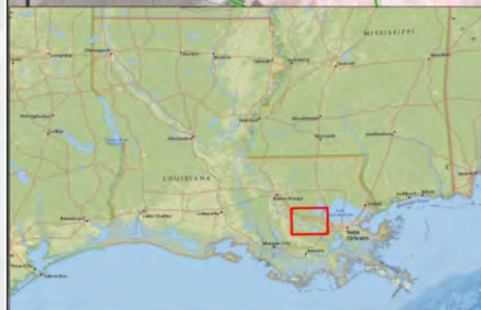
Parish Boundary	Major roadways which are built on grade
Alternative D	Major roadways which are elevated
Authorized Study Area	Local Levees

**Flow Points under I-10**

- Bayou
- Canal
- Culvert
- River

\*Would include a non-structural element for areas outside of the levee system

00.51 2 3 4 Miles



# Next Steps

- Identification of a tentatively selected plan is expected in late June 2013.
- After completion of a favorable Chief's Report in 2014\*, seek an authorization from Congress for construction.
- Design for construction will be initiated upon approval of a favorable Chief's Report and availability of funding.
- Rough order of magnitude project costs indicate a range of costs between \$700M and \$1B.





# **Executive Order 12898**

## **Environmental Justice**



# What is Environmental Justice?

- Consideration of Environmental Justice is required for any Federal Action by Executive Order 12898 signed by President Clinton in 1994:

*“To the greatest extent practicable and permitted by law... each Federal Agency shall make achieving environmental justice part of its mission by identifying and addressing, as appropriate, disproportionately high and adverse human health or environmental affects of its programs, policies, and activities on minority populations and low-income populations.”*





# Public Outreach

- Identify citizens and stakeholders that may wish to participate in future public meetings.
- Provide small scale neighborhood focused meetings so that all voices can be heard.
- Make all information publicly accessible.
- Get feedback on your concerns.



# DISCUSSION



# USACE Points of Contact

- Project Manager:
  - ▶ Jeffrey Varisco – (504) 862-2853
  - ▶ [Jeffrey.J.Varisco@usace.army.mil](mailto:Jeffrey.J.Varisco@usace.army.mil)
- Project Planner:
  - ▶ Jerica Richardson – (504) 862-2038
  - ▶ [Jerica.M.Richardson@usace.army.mil](mailto:Jerica.M.Richardson@usace.army.mil)
- Web
  - ▶ [www.mvn.usace.army.mil](http://www.mvn.usace.army.mil)
- Public Affairs Office
  - ▶ 504-862-2201
  - ▶ [askthecorps@usace.army.mil](mailto:askthecorps@usace.army.mil)

