

# "Call & Response" Procurement Data Service

## C&R delivers procurement data to the workforce at large

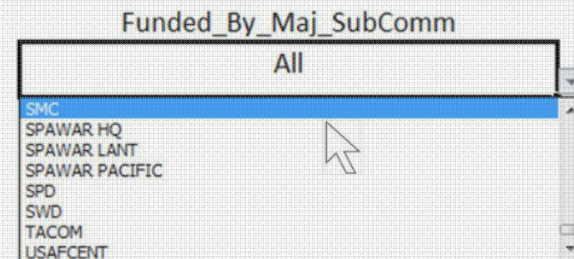
- Automates building of common charts and tables
- Needs only Excel and email to work
- Frees professionals from mundane or "extracurricular" tasks
- Requires no costly investment or training

Steps

1. Download the Microsoft Excel "Call" file and see the 5-minute training video at: [www.acq.osd.mil/dpap/cpic/cp/call\\_and\\_response.html](http://www.acq.osd.mil/dpap/cpic/cp/call_and_response.html)

2. Open the "Call" file and read how C&R works  
When ready, click the "Next Page" link to go to the tab named "Call"

3. On the "Call" tab, use the dropdown menus located at the right of each step to tailor options, as appropriate



4. Email the "Call" file to [server@recogniti.org](mailto:server@recogniti.org) and wait for a "Response"

# C&R's Two Tasks

---

## Accepts “Calls”

- A simple, familiar yet disruptive way to make data more accessible to all
  - Extracts, transfers and loads a mirror copy of FPDS.gov’s public database
  - Filters unique identifiers from “calls”
  - Retrieves select database records
  - Accepts references to other relational tables (e.g., taxonomy, object class)

## Sends back a “Response”

- Provides users a custom snapshot
  - Organizes raw data and creates visual products (charts, tables, etc.) as reports
  - Returns data about the past three fiscal years (FY) and available FY-to-date
  - Anticipates, flags or corrects user errors
  - File transfer protocol for large files

**“Call” templates  
can be changed**

**“Response” files  
can be re-purposed**

## C&R Lite: Easy, Fast, Transparent

### Instructions

### Dropdown Menus

**Step 1:** Set a Baseline Time Horizon

3 Fiscal Years + Latest YTD



**Step 2:** A) Select an Organization Level<sup>1,2</sup>

All

B) Pick an Organization (optional)

All

**Step 3:** A) Set a Point of Interest

All

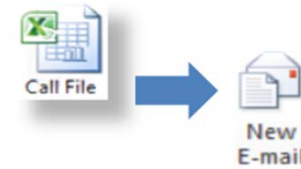
B) Pick an Interest (optional)

All

**Step 4:** Do you Want to Apply Hypothetical Exclusions?  
(*"Yes" Removes Weapon System, Int'l and FMS Buys*)<sup>3</sup>

No

**Step 5:** Email this Excel© File to [server@recogniti.org](mailto:server@recogniti.org)<sup>4</sup>




- 
1. All selections, values and related data schemas come from FPDS.gov.
  2. Spend = contract dollar obligations reported in FPDS.gov where a DoD-agency is both the purchasing and funding agency.
  3. To learn more, see the FAQs tab in the "Response" file that C&R sends back to you after it processes your "Call" file.
  4. If options selected in dropdown menus are mixed inappropriately, C&R will return a blank "response" to the user.

# Call & Response Procurement Data Service

Version: R101S-0115

## Content

2/6/2015

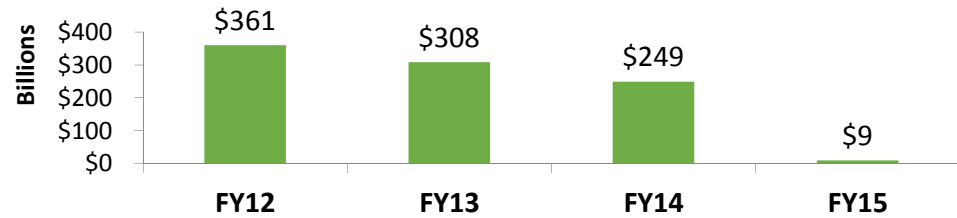
General	Basic Views	Executive Views	Advanced	Data
G1 Dashboard	B1 Funding Office	E1 Item Type	A1 Trend	D1 FPDS Values
G2 Content	B2 Small Business	E2 Taxonomy	A2 Pulse	D2 Added Overlays
<b>G3 Why C&amp;R?</b>	B3 Competition	E3 Budget Object	A3 Gauge	D3 Integrity Checks 
G4 FAQs	B4 Contract Type		A4 Thread	
	B5 Timeline			

## Criteria

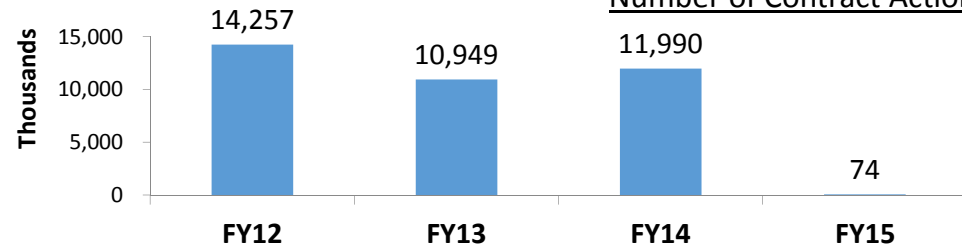
- #1: 3 Fiscal Years + Latest YTD, Without Exclusions
- #2: Funded By and Purchased By Department = '9700: DEPARTMENT OF DEFENSE'

## Overview

### Contract Dollars Obligated



### Number of Contract Actions



## Notes

1. FPDS delays DoD public data by 90 days
2. FY15 data in C&R is current up to Nov 1
3. Minimum software requirement is Excel® 2010
4. Mis-matched criteria create blank "Response" files

# Content

<b>(B)asic Tabs</b>	<b>Funding Office</b> <span style="float: right;">Tab B1</span>	<b>Small Business</b> <span style="float: right;">Tab B2</span>	<b>Competition</b> <span style="float: right;">Tab B3</span>	<b>Contract Type</b> <span style="float: right;">Tab B4</span>	<b>Timeline</b> <span style="float: right;">Tab B5</span>
	by Component	by Category	by Competition Status	by Class	by Fiscal Year
	by Component Share	by Percentage	by Set Aside	by Type	by Fiscal Quarter
	by Agency	by Distribution	by Extent Competed	by Percentage	by Month
	by Agency Share				by Share
	by Major Command				
	by Major Command Share				
	by SubCommand				
	by SubCommand Share				
<b>(E)xec Tabs</b>	<b>Item Type</b> <span style="float: right;">Tab E1</span>	<b>Taxonomy</b> <span style="float: right;">Tab E2</span>	<b>Budget Object</b> <span style="float: right;">Tab E3</span>		
	by Item Type and Share (Style 1)	by Group	by Item		
	by Item Type and Share (Style 2)	by Group Share	by Share		
		by Group (Style 2)			
		by Portfolio			
	by Portfolio Share				
	by Category				
	by Category Share				
<b>(A)dvanced Tabs</b>	<b>Trends</b> <span style="float: right;">Tab A1</span>	<b>Pulse</b> <span style="float: right;">Tab A2</span>	<b>Gauge</b> <span style="float: right;">Tab A3</span>	<b>Thread</b> <span style="float: right;">Tab A4</span>	
	by Funding Office	by Funding Office	by Funding Org Over Time	by Funding Organization	
	by Small Business	by Small Business	by Set Aside Ratio	by Small Business	
	by Competition	by Competition	by Contract Type Momentum	by Competition	
	by Set Aside for Small Businesses	by Contract Type		by Contract Type Class	
	by Contract Type	by Taxonomy Group		by Contract Type	
	by Timeline	by Fiscal Year Trend		by Timeline	
	by Item Type			by Item Type	
	by Taxonomy			by Taxonomy	
by Budget Object			by Budget Object Class		

# Contract Type

Click links to quickly navigate file

**General**

- Dashboard
- Content
- Why C&R?
- FAQs

**Basic Views**

- Funding Office
- Small Business Competition
- Contract Type
- Timeline

**Executive Views**

- Item Type
- Taxonomy
- Budget Object

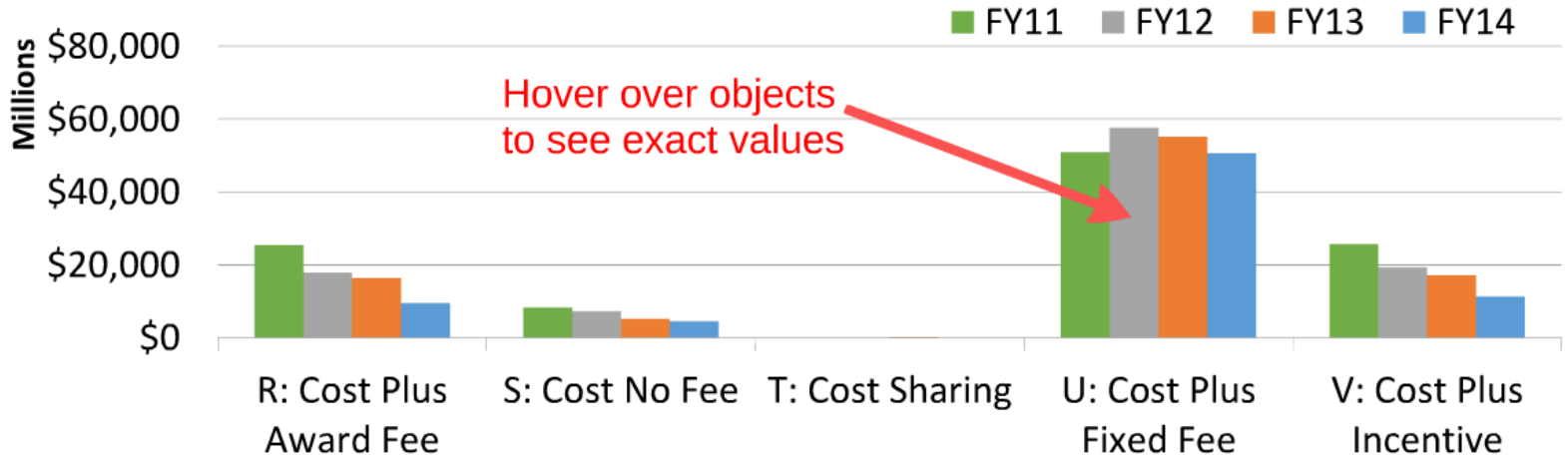
**Advanced**

- Trend
- Pulse
- Gauge
- Thread

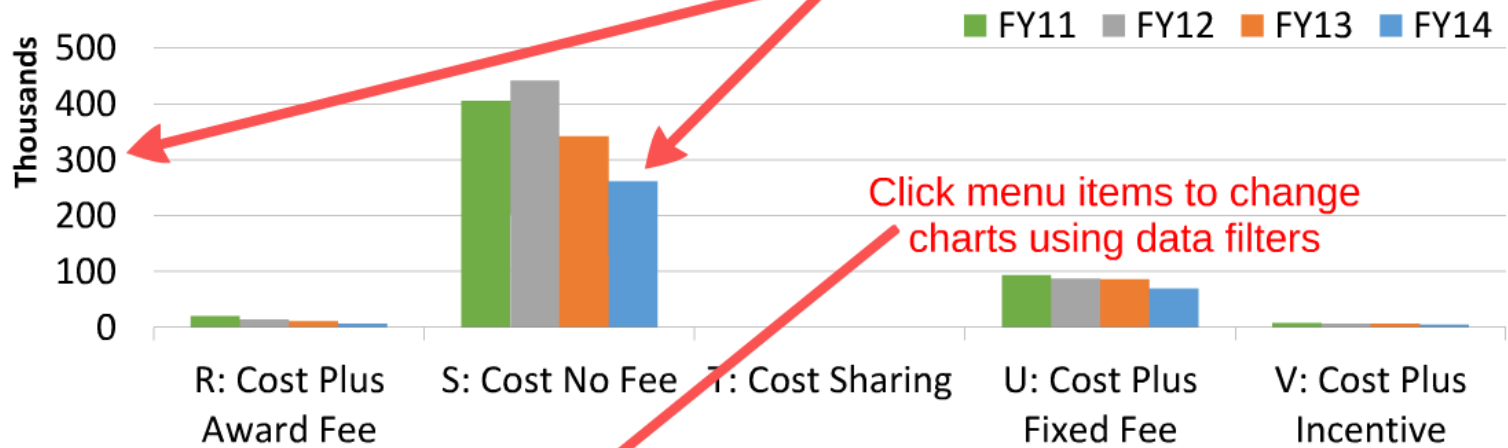
**Data**

- FPDS Values
- Added Overlays
- Integrity Checks

Obligations By Contract Type



Actions By Contract Type



Fiscal Year		Contract Type Class		Contract Type	
FY11	FY12	Cost Plus	Fixed Price	R: Cost Plus Award Fee	S: Cost No Fee
FY13	FY14	Other		T: Cost Sharing	U: Cost Plus Fixed Fee
				V: Cost Plus Incentive	1: Order Dependent (IDV only)

Note:  
C&R "Response" files are tablet-ready; just download into Microsoft's Office™ app

# Added Overlays

Item Type

Tier 1 (Group)

Tier 2 (Portfolio)

Tier 3 (Category)

Budget Object

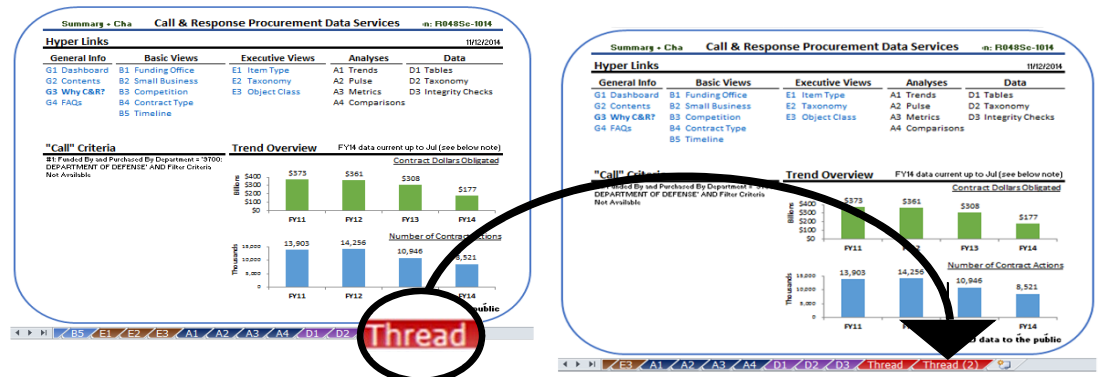
## Tier 1 (Group)

Obligations by Group	FY11	FY12	FY13	FY14
<b>Goods</b>	<b>\$177,306,142,753</b>	<b>\$176,118,926,742</b>	<b>\$147,590,674,625</b>	<b>\$106,197,558,186</b>
1. Aircraft, Ships/Submarines & Land Vehicles	\$62,921,579,381	\$57,465,632,003	\$54,198,704,094	\$38,237,097,365
2. Weapons & Ammunition	\$19,177,745,955	\$18,800,274,236	\$18,138,044,624	\$12,218,682,666
3. Electronic & Communication Equipment	\$22,336,322,727	\$22,211,316,335	\$19,444,886,723	\$13,715,487,475
4. Sustainment S&E	\$44,424,693,589	\$52,013,289,224	\$38,834,996,102	\$29,312,730,480
5. Facilities S&E	\$10,272,074,644	\$9,538,910,830	\$6,371,742,774	\$4,518,672,571
6. Clothing, Textiles & Subsistence S&E	\$17,395,976,735	\$15,909,057,333	\$10,482,062,743	\$8,141,144,441
7. Miscellaneous S&E	\$777,749,724	\$180,446,780	\$120,237,565	\$53,743,188
<b>Services</b>	<b>\$196,047,846,337</b>	<b>\$184,518,103,539</b>	<b>\$160,416,182,099</b>	<b>\$119,347,944,163</b>
1. Research and Development	\$38,063,707,319	\$34,507,752,153	\$27,859,601,877	\$22,015,321,222
2. Knowledge Based Services	\$38,838,109,957	\$37,821,672,417	\$34,526,537,565	\$25,082,798,665
3. Logistics Management Services	\$11,950,127,474	\$8,654,391,898	\$8,380,761,810	\$3,918,383,731
4. Equipment Related Services	\$17,190,591,023	\$19,335,941,239	\$15,965,893,834	\$13,931,605,136
5. Electronic & Communication Services	\$15,352,350,138	\$14,422,384,838	\$12,948,491,828	\$9,641,573,529
6. Medical Services	\$13,783,456,661	\$13,617,042,550	\$13,300,346,219	\$12,289,227,533
7. Transportation Services	\$9,673,003,489	\$9,791,821,880	\$8,675,426,693	\$6,836,162,748
8. Facility Related Services	\$31,860,546,321	\$29,319,361,337	\$26,790,001,684	\$18,162,359,894
9. Construction Services	\$19,335,953,954	\$17,047,735,227	\$11,969,120,589	\$7,470,511,706
<b>Total (Goods + Services)</b>	<b>\$373,353,989,090</b>	<b>\$360,637,030,281</b>	<b>\$308,006,856,723</b>	<b>\$225,545,502,349</b>

**C&R allows you to compare up to three analytical "threads" by way of charts on tab A4.**  
**To do so, import "thread" tabs from another C&R file in the same way you would import any Excel tab.**

**Method** Left-click and drag the "thread" tab from one Excel file into the other Excel file.

**1**

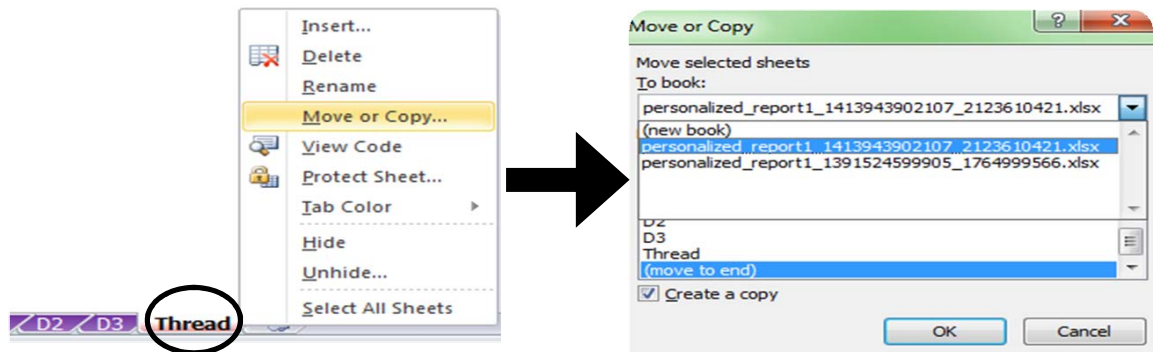


**Now**

Refresh the data to activate new "threads"  
 (See tab A4 for results)

**Method** Right-click the "thread" tab in one file and "copy" it to another file.

**2**



Note: There are transfer-ready "threads" of data masked from view on this Excel tab.



# **"Call & Response"**

## **Procurement Data Service**

### **C&R delivers procurement data to the workforce at large**

- Automates building of common charts and tables
- Needs only Excel and email to work
- Frees professionals from mundane or "extracurricular" tasks
- Requires no costly investment or training

**We hope your productivity gain makes this capability  
a must-have item in your organization's toolkit**

Interested?

[www.acq.osd.mil/dpap/cpic/cp/call\\_and\\_response.html](http://www.acq.osd.mil/dpap/cpic/cp/call_and_response.html)

Questions?

[OSD.ContractData@Mail.Mil](mailto:OSD.ContractData@Mail.Mil)