

The
University of
North Texas
at Dallas
Fact Book 2014

Table of Contents

Overview

Vision, Mission, and History of the University	6
University of North Texas System	7
Programs Offered	8
Institutional Effectiveness	9
Library Resources	10
Campus Facts	10

Faculty and Staff

Employees by Ethnicity, Fall 2013	12
Employees by Job Classification and Gender, Fall 2013	12
Faculty by Full-Time Status and Full-Time Equivalent (FTE), Fall 2013	13
Semester Credit Hours Taught by Full and Part-Time Faculty, Fall 2013	14
Full-Time Equivalents and Student/Faculty Ratios, Fall 2013	14

Student Enrollment

Headcount and Full-Time Equivalent Enrollment by Level, Fall and Spring Terms	16
Headcount Enrollment by Level and Classification, Fall and Spring Terms.....	17
Headcount Enrollment by Admission Status, Fall and Spring Terms	18
Headcount Enrollment by Gender, Fall and Spring Terms	18
Headcount Enrollment by Ethnicity and Gender, Fall Terms	19
Enrollment by Age and Level, Fall 2013.....	20
Enrollment by Full-time Status, Fall and Spring Terms	20
Student Centered Learning, Fall 2013	21
Enrollment by Geographic Area, Fall 2013	21
Enrolled Students by Program, Fall Terms.....	22
Enrollment Charts by Division and Department, Fall Terms.....	23
Enrolled Students by Program, Spring Terms	24

Student Semester Credit Hours

Semester Credit Hours and Full-time Equivalent by Level, Fall and Spring Terms.....	26
Semester Credit Hours by Division and Department, Fall and Spring Terms.....	27
Semester Credit Hours, Division of Business and Public Leadership, Fall Semesters	28
Semester Credit Hours, Division of Education and Human Services, Fall Semesters	29
Semester Credit Hours, Division of Liberal Arts and Life Sciences, Fall Semesters.....	30
Semester Credit Hours by Course Prefix, Spring Semesters	32

Retention and Graduation

First Time In College (FTIC) Retention	36
New Undergraduate Transfer Retention	38
New Graduate Retention.....	40
Degrees Received by Level	42
Degrees Received by Administrative Unit	43

Table of Contents (continued)

Glossary and Contact Information

Glossary of Terms	46
Contact Information	49

OVERVIEW

Vision, Mission, and History of the University

Vision

To create the place of choice where students are inspired to learn, faculty are inspired to teach and the community is inspired to support.

Mission

Transforming the lives of students, families and communities by providing high-quality, student-focused education in preparation for tomorrow's careers.

History

In the late 1990's, State Senator Royce West of Dallas and other city leaders cast a vision for a new, four-year public university in Dallas. After several university systems discussed their ideas for higher education in the city, the University of North Texas System Board of Regents came forward with a plan to establish a public university in the city—the first in the history of Dallas.

The Southern Dallas County Feasibility Study Community Task Force accepted the plan, and in January 1999 the Texas Higher Education Coordinating Board (THECB) approved the proposal from the UNT System. The THECB subsequently granted the UNT System permission to use the moniker "UNT Dallas Campus" for this endeavor. The campus was established in January 2000 on Hampton Road in Dallas as an upper-division, off-campus location of the University of North Texas.

On May 8, 2001, Gov. Rick Perry signed Senate Bill 576 creating the University of North Texas at Dallas. State Representative Helen Giddings and State Representative Jesse Jones sponsored the companion bill in the House, HB 1417. Under the terms of the legislation, the UNT Dallas Campus would be allowed to open as a new four-year university when enrollment reached 1,000 full-time equivalent (FTE) students.

The City of Dallas contributed \$3 million to purchase 202 acres of land in the southernmost section of the city, and local developers, including Mike Boney and Vernon Jordan, donated additional acreage to bring the total acreage of the campus to 264 acres. In October 2003, the Communities Foundation of Texas awarded the UNT System a \$500,000 planning grant to fund a master plan for UNT Dallas. That same year the Texas legislature authorized \$25.4 million for the construction of the initial 75,000-square-foot academic building on the campus.

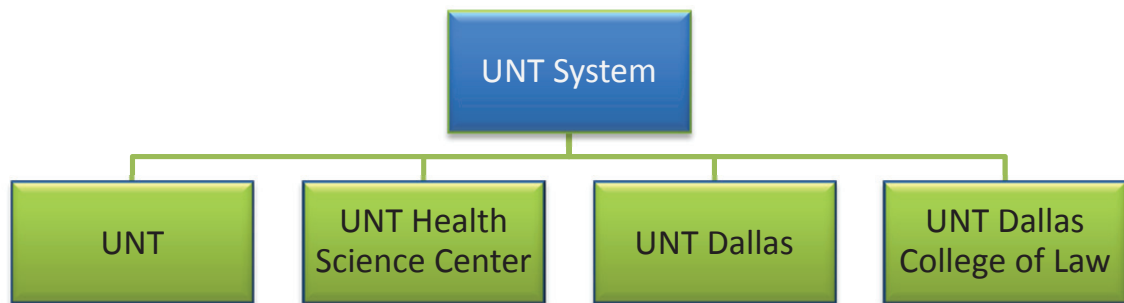
In April 2009, the THECB officially certified enrollment at the University of North Texas Dallas Campus at greater than 1,000 full-time equivalent students. The certification enabled the legislation that created UNT Dallas, and the THECB declared UNT Dallas an independent general academic institution.

With the enrollment threshold met, Governor Perry signed Senate Bill 629 in May 2009. That bill allowed for the physical expansion of three university system centers in the state—Texas A&M Central Texas in Killeen, Texas A&M San Antonio, and UNT Dallas. With the release of \$25 million in previously authorized tuition revenue bonds, UNT Dallas began construction on its second building in August 2009. The building was completed in August 2010 as UNT Dallas accepted its first freshman class, the Class of 2014.

The University submitted an application for separate accreditation to the Southern Association of Colleges and Schools, and the application was approved by the SACS Governing Board in June 2012. The SACS team performed the on-site visit in Spring 2013 and issued no recommendations for change. The SACS Governing Board subsequently granted separate accreditation to the University of North Texas at Dallas in June 2013. UNT Dallas offers 16 undergraduate and six graduate degrees in high-demand fields such as criminal justice, teacher education, business administration, sociology, and counseling.

University of North Texas System

The University of North Texas System serves the North Texas area, boosting economic activity in the region by nearly \$2 billion annually. About 36,000 students are enrolled in undergraduate, graduate, and professional programs, and system enrollment is projected to increase to about 45,000 students by 2015.



UNT System Board of Regents

Appointed by the governor of Texas, the Board of Regents is the governing body of the University of North Texas System, which consists of the University of North Texas, the UNT Health Science Center at Fort Worth, the University of North Texas at Dallas, and the UNT Dallas College of Law.

Brint Ryan, Chairman

Michael R. Bradford

Milton B. Lee

Steve Mitchell

Donald Potts, Vice Chairman

Rusty Reid

Gwyn Shea

Al Silva

B. Glen Whitley

Rudy Reynoso, Student Regent

Julia A. Boyce, Board Secretary

UNT Dallas President's Cabinet

Ronald T. Brown, President

Lois Becker, Provost and Vice President for Academic Excellence and Student Success

Barry Lewis, Interim Chief Financial Officer and Vice President for Finance and Administration

Brandon Starr, Vice President for University Advancement

Ana Rodriguez, Assistant Vice President for University Advancement and Special Assistant to the President for External Affairs

Thad Anglin, Vice Provost for Academic Excellence and Student Success

Levi Davis, Special Assistant to the President for Urban and Community Development

Dana Russell, Director of Communications and Marketing

Programs Offered

Institutional Administrative Structure	Level		Minimum SCH Required	CIP Code	Start Date
	Bacc.	Master's			
Division of Education and Human Services					
Department of Counseling & Human Services					
Child Development and Family Studies ¹	BS		120	19.0706.00	08/05/14
Counseling		MED, MS	48, 60	13.1101.00	10/29/09
Human Services Management & Leadership	BS		120	44.0000.00	10/29/09
Department of Teacher Education & Administration					
Educational Administration ²		MED	36	13.0408.00	10/29/09
Educational Leadership ¹		MED	30	13.0401.00	10/17/13
Interdisciplinary Studies	BS		123	30.9999.01	10/29/09
Division of Liberal Arts & Life Sciences					
Applied Arts & Sciences	BAAS		120	30.9999.40	10/29/09
Criminal Justice	BS		120	43.0104.00	10/29/09
Criminal Justice ²		MS	36	43.0104.00	10/29/09
Department of Mathematics & Information Sciences					
Information Technology	BA		121	11.0101.00	10/29/09
Mathematics	BA		120	27.0101.00	10/29/09
Department of Sociology & Psychology					
Psychology ¹	BA		120	42.0101.00	01/01/14
Sociology	BA		120	45.1101.00	10/29/09
Division of Business & Public Leadership³					
Department of Business					
Accountancy	BS		121	52.0301.00	10/29/09
Accounting	BBA		120	52.0301.00	09/01/10
Business Administration		MBA	36	52.0201.00	10/29/09
Entrepreneurship	BBA		120	52.0701.00	09/01/10
Finance	BBA		120	52.0801.00	09/01/10
General Business	BBA		120	52.0101.00	10/29/09
Logistics & Supply Chain Management	BS		120	52.0203.00	10/29/09
Organizational Behavior & Human Resource Management	BBA		120	52.1003.00	09/01/10
Public Leadership ¹		MS	39	40.0401.00	09/01/14

¹. New degree program.

². The MS degree in Criminal Justice, and the MED degree in Educational Administration are being phased-out. No new students are currently being accepted into these programs.

³. On March 1, 2013, the Division of Urban and Professional Studies was renamed the Division of Business and Public Leadership.

Source: THECB, and UNT Dallas Office of Institutional Research and Planning.

<http://www.thecb.state.tx.us/apps/programinventory/lnvSearch.cfm>

The University of North Texas at Dallas (UNT Dallas) has been authorized by the Texas Higher Education Coordinating Board (THECB) and the University of North Texas System Board of Regents to grant degrees at the baccalaureate and master's levels. UNT Dallas currently offers 16 baccalaureate and 6 master's degrees and is accredited by the Southern Association of Colleges and Schools (SACS). As authorized by the state of Texas, the UNT Dallas College of Law will merge with UNT Dallas once SACS approval is secured. This merger will expand the degree offerings to the doctoral level.

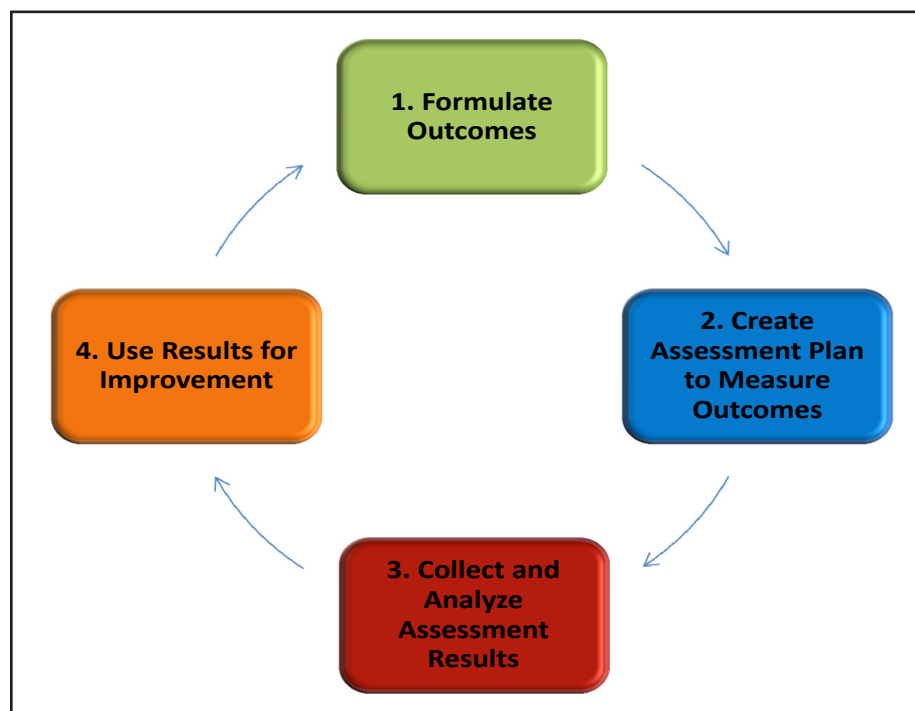
Institutional Effectiveness

The Office of Institutional Effectiveness supports the mission of the University of North Texas at Dallas (UNT Dallas) by fostering the development of an institutional culture of continuous quality improvement.

Core functions include:

- Supporting an institution-wide program for assessing student learning outcomes in degree programs and performance outcomes in administrative and support units
- Facilitating the collecting and reporting of institutional data for internal and external constituents
- Coordinating strategic planning processes for the institution
- Directing all matters related to the continuing SACS accreditation of UNT Dallas

At the University of North Texas at Dallas, all educational programs and administrative and educational support units participate in ongoing assessment of their effectiveness. Each academic program and non-academic department identifies expected outcomes, assesses the extent to which it achieves these outcomes, and makes improvements based on analysis of the results.



Oversight of institutional effectiveness at UNT Dallas is vested in a group of key administrators and staff called the Institutional Effectiveness Steering Committee. The Office of Institutional Effectiveness supports assessment activities at the institution with one-on-one and small-group consultation and maintenance of an online database management system for storing assessment data. The office also produces an assessment handbook that is distributed to all faculty and staff and provides formal training on assessment. Activities related to the continuing accreditation by the Southern Association of Colleges and Schools are administered by the Office of Institutional Effectiveness.

Library Resources

The UNT Dallas Library is primarily digital and provides access to an online catalog and multiple electronic resources through the UNT Dallas website at <http://www.untDallas.edu/our-campus/library>. The collection of over 560,000 electronic resources includes online e-books, ejournals, literature abstracts, indexes, images, maps, and more made available through an IntraSystem Agreement with UNT Libraries. Electronic databases enable users to email, save or print articles and citations and to set alert notifications of new related information. The Video on Demand system provides students, faculty and staff with access to hundreds of educational films that can be viewed entirely online to support traditional and distance education at UNTD. A comprehensive list of research guides with direct links to specific databases to support course curricula is also available on the library website.

The UNT Dallas Library provides seamless on-campus access to electronic resources and databases from all computers residing on the Dallas campus network, including UNTD's JAGnet Wireless network. Distance education students and remote students gain access by authentication of validated UNTD credentials to either the library's EZProxy or the UNT Dallas Virtual Private Network (VPN).

Print Collection			
	Total 2012-2013	Additions/ Deletions	Total 2013-2014
Cataloged Print Collection	1,801	3	1,804
Career	241	1	242
Fiction	0	8	8
Juvenile Fiction	2	0	2
Non-Fiction	675	(25)	650
Reference	883	19	902
Non-Cataloged Special Collections	0	1,932	1,932
Total Print Collection	1,801	1,935	3,736
Non-Print Collection			
Audio Books	4	0	4
Media (DVD, VHS, Other media)	284	29	313
Total Non-Print Collection	288	29	317

Campus Facts

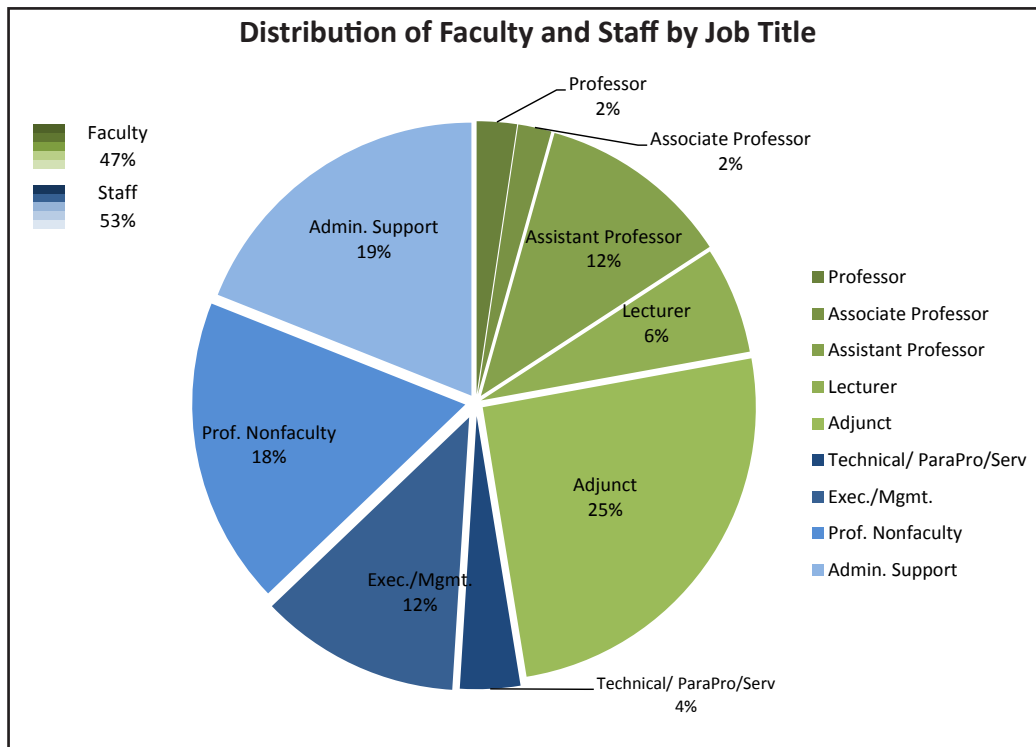
- The University of North Texas at Dallas began operations on September 1, 2010, and was accredited by the Southern Association of Colleges and Schools Commission on Colleges in June 2013, retroactive to January 2013.
- The UNT Dallas Campus encompasses 264 acres, with two multipurpose buildings which house classrooms, offices, meeting spaces and a library.
- The first building was completed in 2007 with 77,093 gross square feet (GSF). The second building was completed in Fall 2010 for the opening of the University of North Texas at Dallas. It contains 104,161 GSF and has been awarded a LEED Gold Certification from the U.S. Green Building Council.

**FACULTY
AND
STAFF**

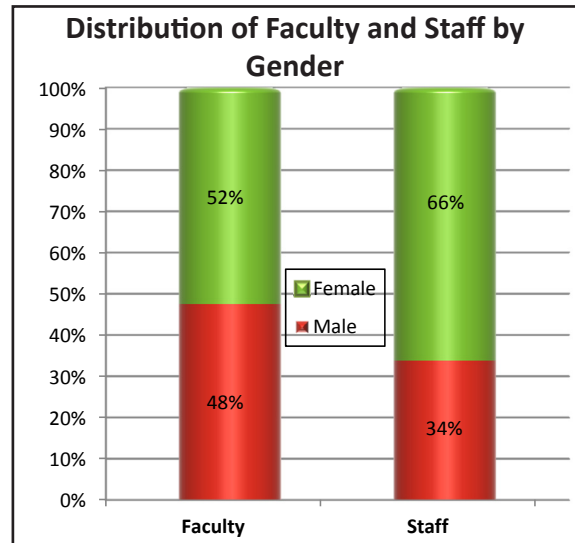
Employees by Ethnicity, Fall 2013

Ethnicity	Faculty		Staff		Total	
	Count	Percent	Count	Percent	Count	Percent
Total	120		133		253	
White	58	48%	52	39%	110	43%
Black/African American	26	22%	57	43%	83	33%
Hispanic/Latino	15	13%	20	15%	35	14%
Other	21	18%	4	3%	25	10%

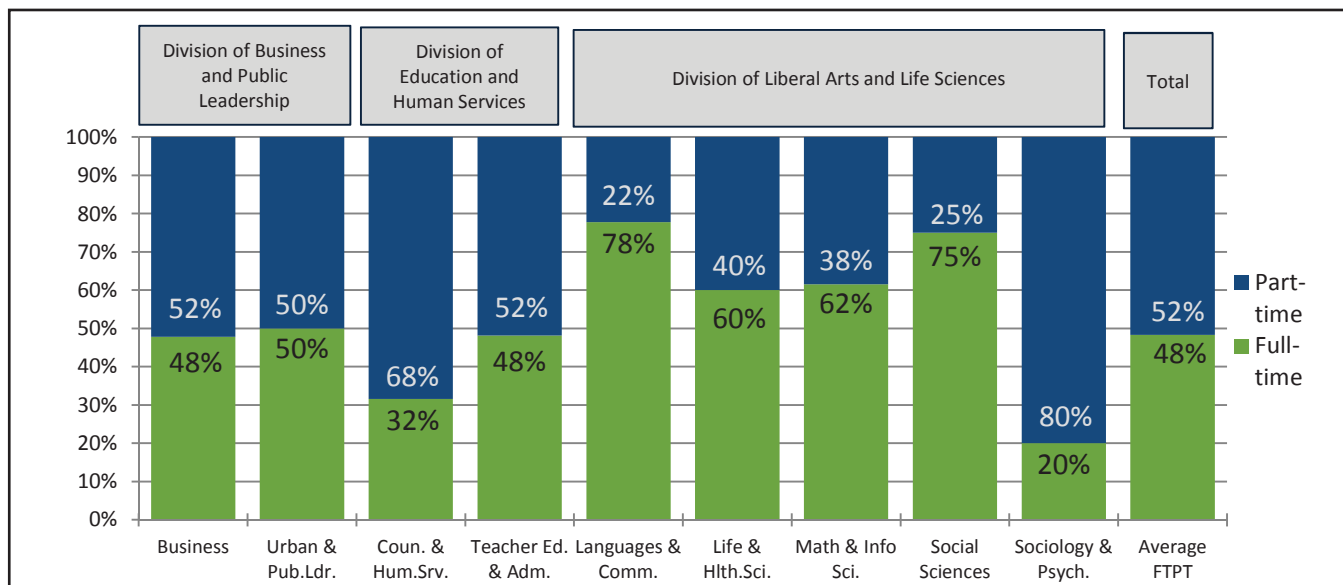
Employees by Job Classification and Gender, Fall 2013



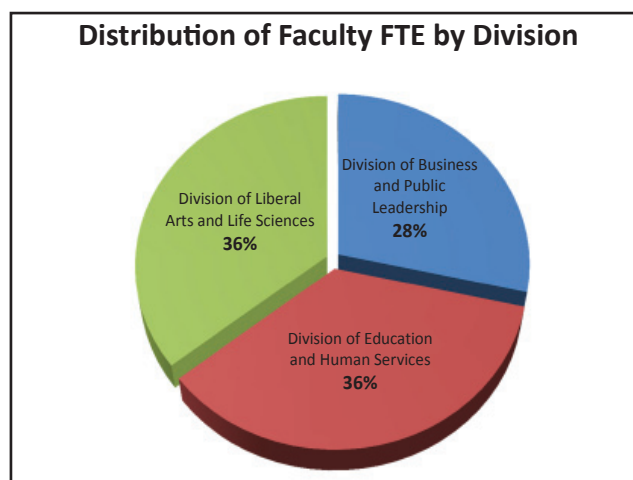
Employee Category	Female	Male	Total
Faculty	63	57	120
Professor	2	4	6
Associate Professor	2	3	5
Assistant Professor	14	15	29
Lecturer	8	8	16
Adjunct	37	27	64
Staff	88	45	133
Executive/Management	14	16	30
Professional	35	11	46
Administrative Support	37	11	48
Technical/ ParaPro./Service	2	7	9
Total	151	102	253



Faculty by Full-Time Status and Full-Time Equivalent (FTE), Fall 2013



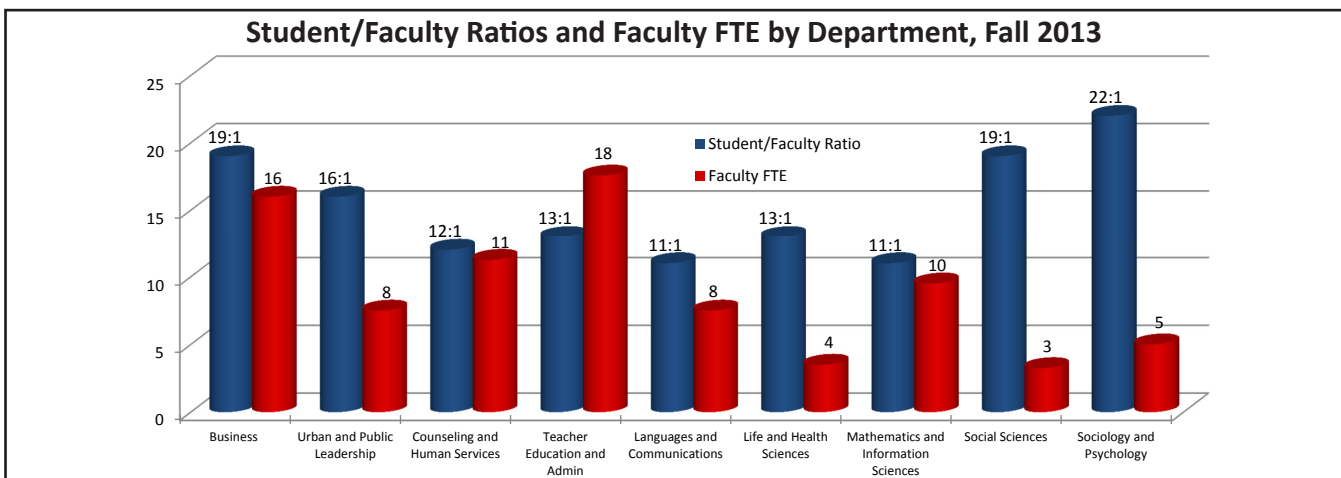
Institutional Administrative Structure	Faculty FTE	Faculty Headcount				
		Total	Full-time		Part-time	
			Count	Percent	Count	Percent
Division of Business and Public Leadership	24	33	16	48%	17	52%
Department of Business	16	23	11	48%	12	52%
Department of Urban and Public Leadership	8	10	5	50%	5	50%
Division of Education and Human Services	29	46	19	41%	27	59%
Department of Counseling and Human Services	11	19	6	32%	13	68%
Department of Teacher Education and Administration	18	27	13	48%	14	52%
Division of Liberal Arts and Life Sciences	29	41	23	56%	18	44%
Department of Languages and Communications	8	9	7	78%	2	22%
Department of Life and Health Sciences	4	5	3	60%	2	40%
Department of Mathematics and Information Sciences	10	13	8	62%	5	38%
Department of Social Sciences	3	4	3	75%	1	25%
Department of Sociology and Psychology	5	10	2	20%	8	80%
Total	81	120	58	48%	62	52%



Semester Credit Hours Taught by Full and Part-Time Faculty, Fall 2013

Institutional Administrative Structure	Semester Credit Hours Taught			Percent Taught by	
	Full-time Faculty	Part-time Faculty	Total	Full-time Faculty	Part-time Faculty
Division of Business and Public Leadership	3,867	2,553	6,420	60%	40%
Department of Business	2,952	1,677	4,629	64%	36%
Department of Urban and Public Leadership	915	876	1,791	51%	49%
Division of Education and Human Services	3,301	2,104	5,405	61%	39%
Department of Counseling and Human Services	927	981	1,908	49%	51%
Department of Teacher Education and Administration	2,374	1,123	3,497	68%	32%
Division of Liberal Arts and Life Sciences	4,406	1,771	6,177	71%	29%
Department of Languages and Communications	1,161	142	1,303	89%	11%
Department of Life and Health Sciences	674	30	704	96%	4%
Department of Mathematics and Information Sciences	1,251	300	1,551	81%	19%
Department of Social Sciences	795	120	915	87%	13%
Department of Sociology and Psychology	525	1,179	1,704	31%	69%
Total	11,574	6,428	18,002	64%	36%

Full-Time Equivalents and Student/Faculty Ratios, Fall 2013

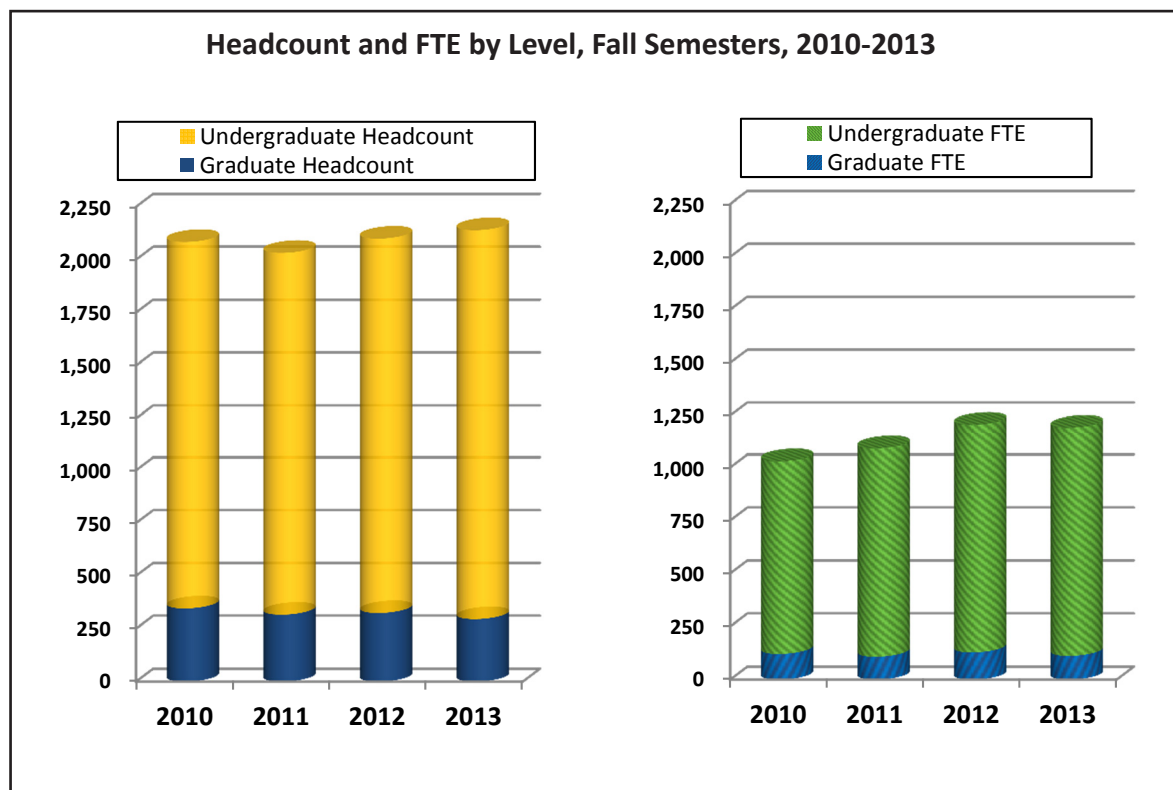


Institutional Administrative Structure	Student FTE	Faculty FTE	Student/Faculty Ratio
Business and Public Leadership	421	24	18:1
Business	304	16	19:1
Urban & Public Leadership	116	8	16:1
Education and Human Services	368	29	13:1
Counseling & Human Services	134	11	12:1
Teacher Educ & Admin	234	18	13:1
Liberal Arts and Life Sciences	403	29	14:1
Languages & Communication	86	8	11:1
Life & Health Sciences	46	4	13:1
Math & Info Sciences	99	9	11:1
Social Sciences	61	3	19:1
Sociology & Psychology	110	5	22:1
Total	1,191	82	15:1

STUDENT ENROLLMENT

Headcount and Full-Time Equivalent Enrollment by Level, Fall and Spring Terms

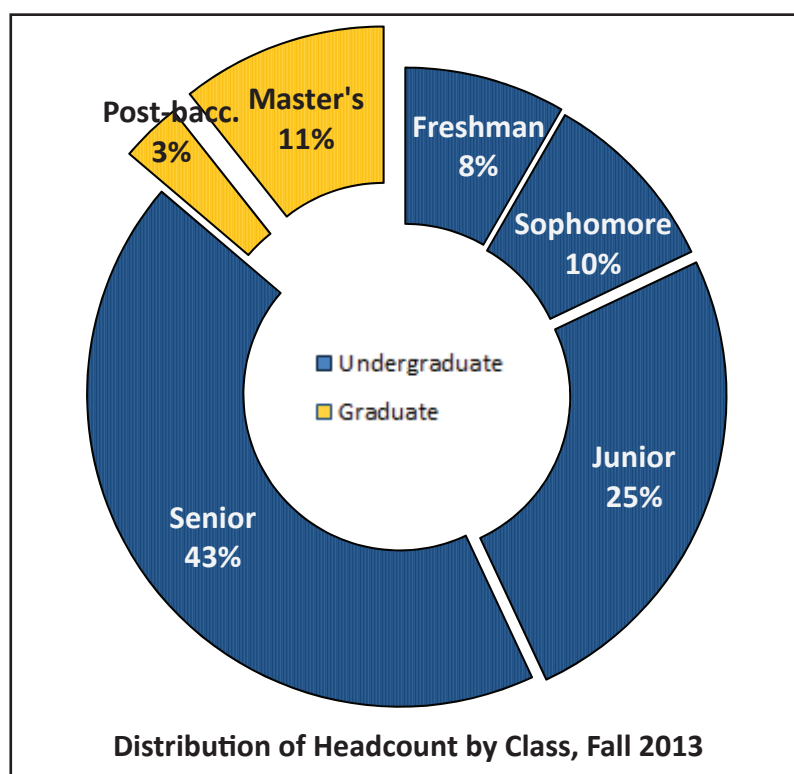
Fall Enrollment	2010		2011		2012		2013	
	N	%	N	%	N	%	N	%
Headcount	2,084		2,032		2,100		2,140	
Undergraduate	1,738	83%	1,716	84%	1,776	85%	1,845	86%
Graduate	346	17%	316	16%	324	15%	295	14%
Full-time Equivalent (FTE)	1,029		1,090		1,205		1,191	
Undergraduate	909	88%	983	90%	1,078	89%	1,081	91%
Graduate	120	12%	107	10%	127	11%	111	9%



Spring Enrollment	2011		2012		2013		2014	
	N	%	N	%	N	%	N	%
Headcount	1,925		1,901		2,010		2,104	
Undergraduate	1,605	83%	1,568	82%	1,693	84%	1,822	87%
Graduate	320	17%	333	18%	317	16%	282	13%
Full-time Equivalent (FTE)	974		1,013		1,104		1,108	
Undergraduate	863	89%	894	88%	984	89%	999	90%
Graduate	111	11%	119	12%	120	11%	109	10%

Headcount Enrollment by Level and Classification, Fall and Spring Terms

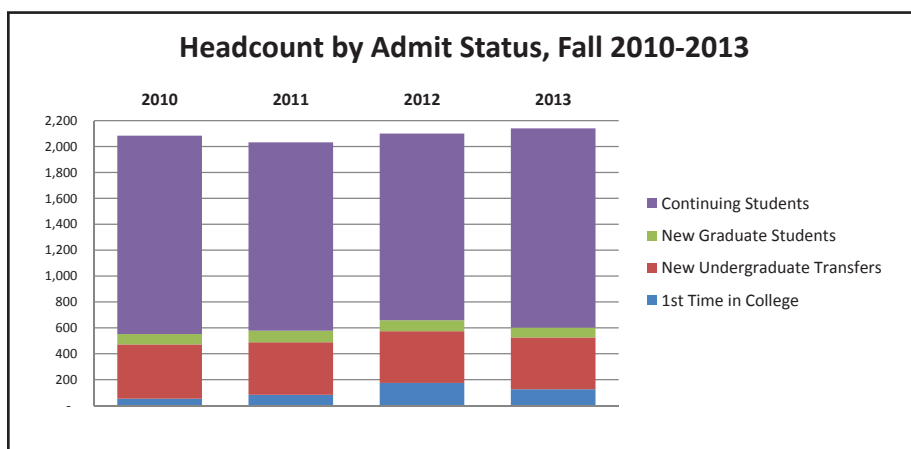
Fall Enrollment	2010		2011		2012		2013	
	N	%	N	%	N	%	N	%
Total Enrollment	2,094		2,032		2,100		2,140	
Undergraduates	1,748	83%	1,716	84%	1,776	85%	1,845	86%
Freshman	72	4%	123	7%	195	11%	178	10%
Sophomore	138	8%	164	10%	207	12%	206	11%
Junior	531	30%	558	33%	543	31%	537	29%
Senior	1,007	58%	871	51%	831	47%	924	50%
Graduates	346	17%	316	16%	324	15%	295	14%
Post-baccalaureate	75	22%	76	24%	72	22%	67	23%
Master's	271	78%	240	76%	252	78%	228	77%



Spring Enrollment	2011		2012		2013		2014	
	N	%	N	%	N	%	N	%
Total Enrollment	1,925		1,901		2,010		2,104	
Undergraduates	1,605	83%	1,568	82%	1,693	84%	1,822	87%
Freshman	64	4%	96	6%	147	9%	107	6%
Sophomore	133	8%	124	8%	160	9%	213	12%
Junior	494	31%	508	32%	514	30%	532	29%
Senior	914	57%	840	54%	872	52%	970	53%
Graduates	320	17%	333	18%	317	16%	282	13%
Post-baccalaureate	70	22%	86	26%	68	21%	55	20%
Master's	250	78%	247	74%	249	79%	227	80%

Headcount Enrollment by Admission Status, Fall and Spring Terms

Fall Admit Status	2010		2011		2012		2013	
	N	%	N	%	N	%	N	%
Total Enrollment	2,084		2,032		2,100		2,140	
1st Time in College	53	3%	83	4%	175	8%	126	6%
New Undergraduate Transfers	419	20%	406	20%	399	19%	400	19%
New Graduate Students	80	4%	89	4%	85	4%	76	4%
Continuing Students Total	1,532	74%	1,454	72%	1,441	69%	1,538	72%
Undergraduates	1,266	83%	1,227	84%	1,202	83%	1,319	86%
Graduates	266	17%	227	16%	239	17%	219	14%

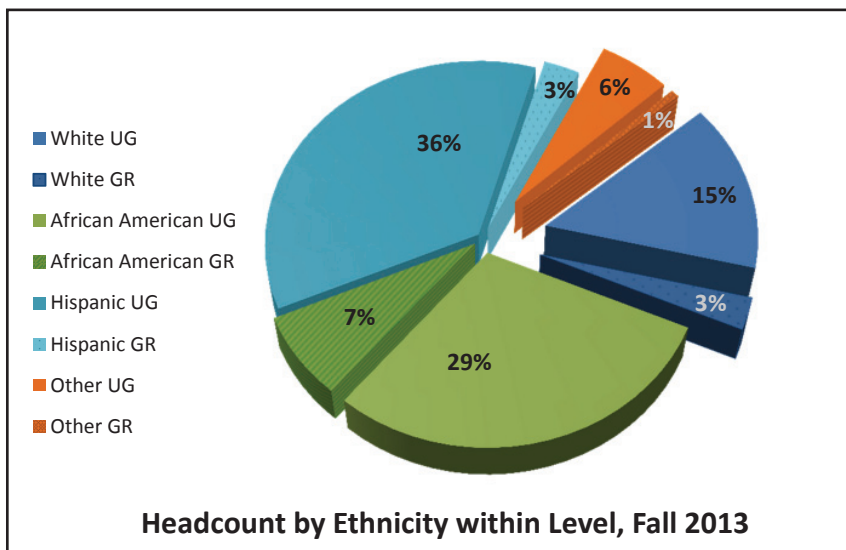


Spring Admit Status	2011		2012		2013		2,014	
	N	%	N	%	N	%	N	%
Total Enrollment	1,925		1,901		2,010		2,104	
1st Time in College	6	0%	4	0%	5	0%	3	0%
New Undergraduate Transfers	220	11%	196	10%	183	9%	172	8%
New Graduate Students	60	3%	84	4%	65	3%	55	3%
Continuing Students Total	1,639	85%	1,617	85%	1,757	87%	1,874	89%
Undergraduates	1,378	72%	1,368	72%	1,503	75%	1,647	78%
Graduates	261	14%	249	13%	254	13%	227	11%

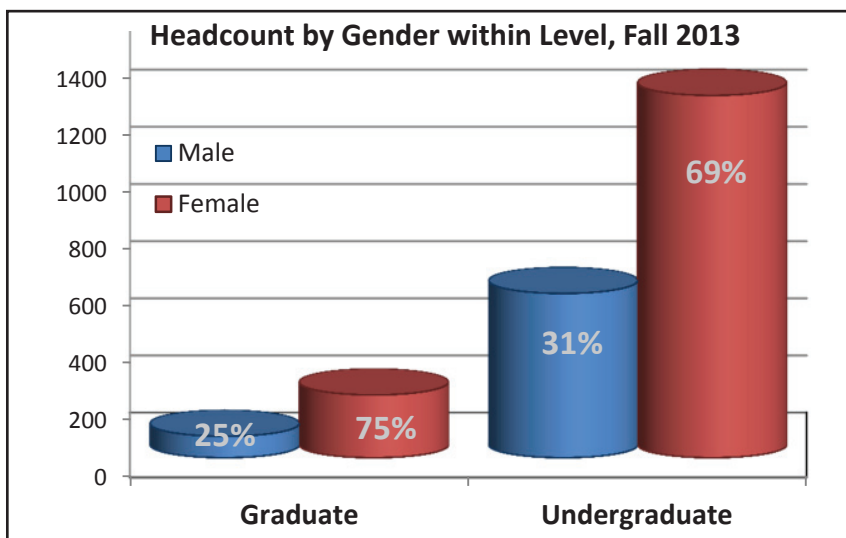
Headcount Enrollment by Gender, Fall and Spring Terms

Enrollment Term	2010-11		2011-12		2012-13		2013-14	
	N	%	N	%	N	%	N	%
Fall Headcount	2,084		2,032		2,100		2,140	
Female	1,451	70%	1,413	70%	1,454	69%	1,489	70%
Male	633	30%	619	30%	646	31%	651	30%
Spring Headcount	1,925		1,901		2,010		2,104	
Female	1,342	64%	1,350	66%	1,382	66%	1,433	67%
Male	583	28%	551	27%	628	30%	671	31%

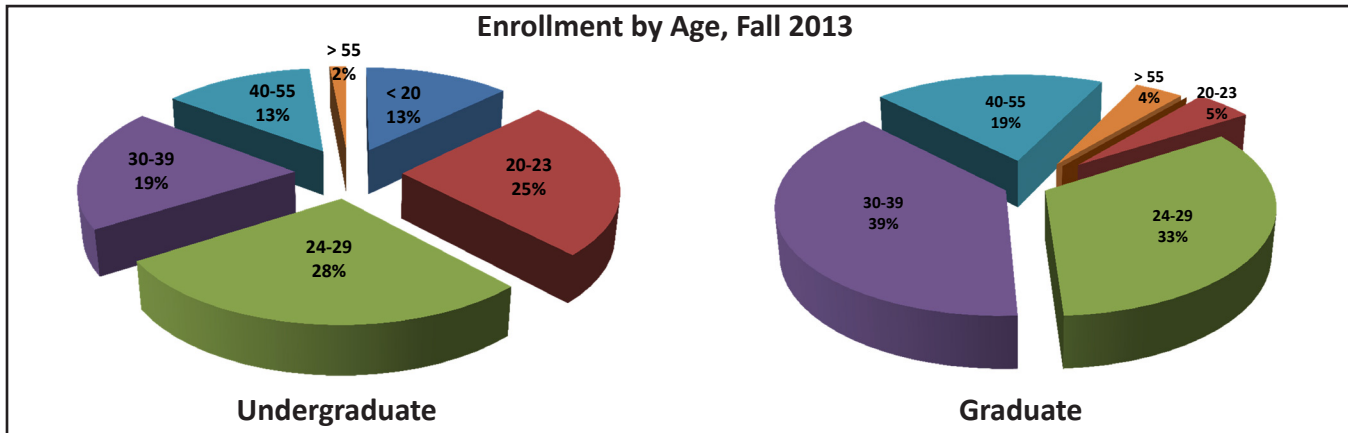
Headcount Enrollment by Ethnicity and Gender, Fall Terms



Fall Enrollment	2010			2011			2012			2013		
	UG	GR	Total	UG	GR	Total	UG	GR	Total	UG	GR	Total
Total Headcount	1,738	346	2,084	1,716	316	2,032	1,776	324	2,100	1,845	295	2,140
White	429	98	527	374	83	457	317	80	397	317	60	377
Afr. Amer.	655	186	841	648	161	809	665	168	833	633	159	792
Hispanic	519	39	558	576	52	628	688	63	751	771	61	832
Other	135	23	158	118	20	138	106	13	119	124	15	139
Female	1,196	255	1,451	1,182	231	1,413	1,224	230	1,454	1,269	220	1,489
White	257	64	321	222	63	285	199	53	252	193	40	233
Afr. Amer.	482	148	630	487	127	614	479	128	607	466	129	595
Hispanic	381	29	410	409	31	440	490	42	532	542	42	584
Other	76	14	90	64	10	74	56	7	63	68	9	77
Male	542	91	633	534	85	619	552	94	646	576	75	651
White	172	34	206	152	20	172	118	27	145	124	20	144
Afr. Amer.	173	38	211	161	34	195	186	40	226	167	30	197
Hispanic	138	10	148	167	21	188	198	21	219	229	19	248
Other	59	9	68	54	10	64	50	6	56	56	6	62



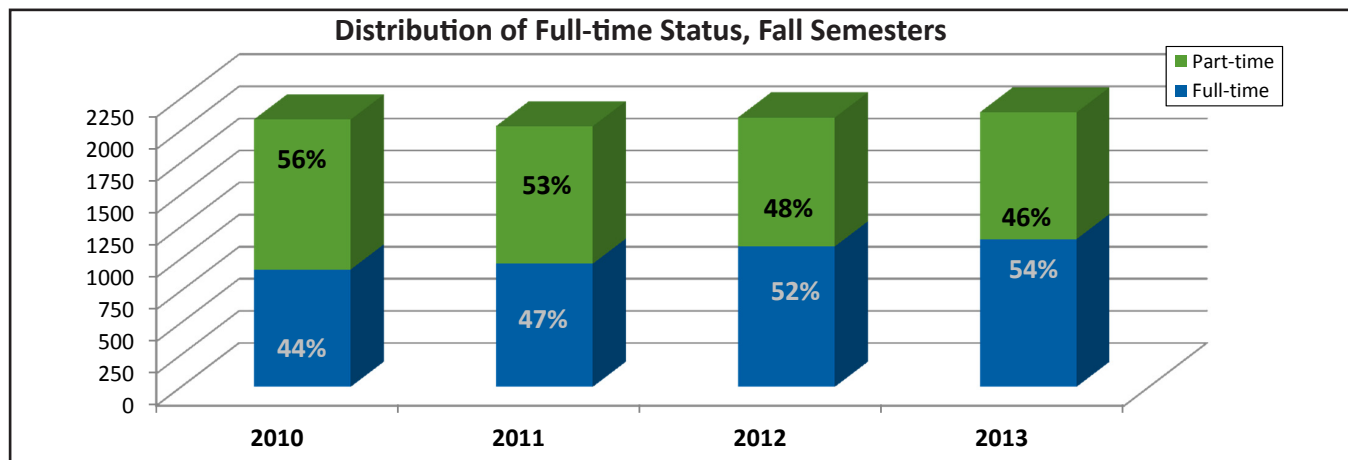
Enrollment by Age and Level, Fall 2013



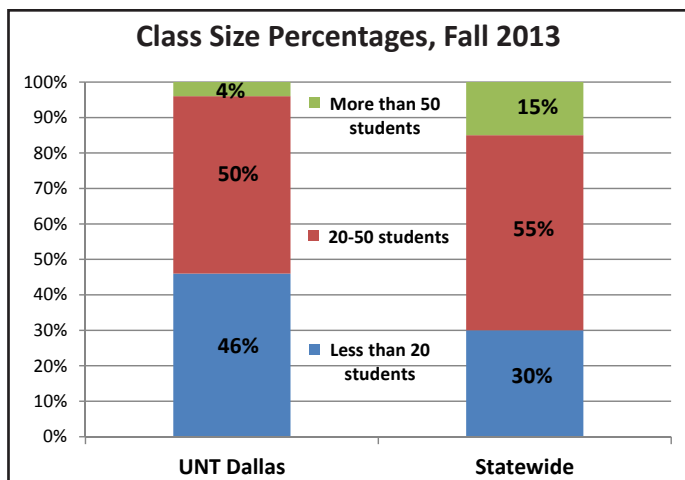
Headcount Enrollment, Fall Semester 2013						
Age Category	Undergraduate		Graduate		Total	
	N	%	N	%	N	%
Age 19 or younger	236	13%	0	0%	236	11%
Age 20-23	465	25%	14	5%	479	22%
Age 24-29	517	28%	98	33%	615	29%
Age 30-39	357	19%	114	39%	471	22%
Age 40-55	243	13%	57	19%	300	14%
Over age 55	27	1%	12	4%	39	2%
Total	1,845		295		2,140	

Enrollment by Full-time Status, Fall and Spring Terms

Enrollment Term	2010-11		2011-12		2012-13		2013-14	
	N	%	N	%	N	%	N	%
Fall Headcount	2,084		2,032		2,100		2,140	
Full-time	915	44%	960	47%	1,095	52%	1,152	54%
Part-time	1,169	56%	1,072	53%	1,005	48%	988	46%
Spring Headcount	1,925		1,901		2,010		2,104	
Full-time	789	41%	861	45%	1,026	51%	1,093	52%
Part-time	1,136	59%	1,040	55%	984	49%	1,011	48%



Student Centered Learning, Fall 2013

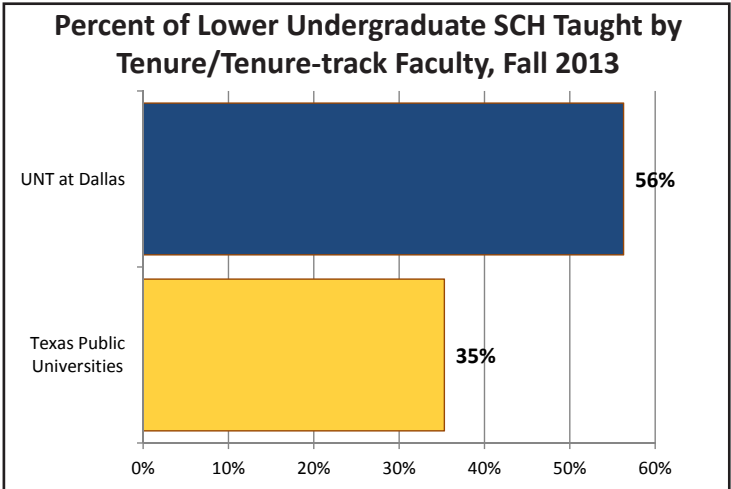


Class Size, Fall 2013

UNT Dallas strives to provide the supporting infrastructure for successful participation and graduation of its students. UNT Dallas has an average class size of 23 students compared to 40 students statewide. Additionally, 46% of all classes at UNT Dallas are taught to 19 students or less compared to 30% statewide.

Quality of Instruction, Fall 2013

One measure that indicates the quality of classroom instruction is the percentage of lower undergraduate semester credit hours that are taught by tenured and tenure-track faculty. This rate for UNT at Dallas is 56% compared to a statewide average for public universities of 35%.



Enrollment by Geographic Area, Fall 2013

Permanent Residence	n	Enrollment
Total	71	2,140
DFW Metroplex	12	2,033
Dallas	1	1,576
Tarrant	1	154
Denton	1	96
Ellis	1	82
Collin	1	59
Kaufman	1	44
Rockwall	1	13
Delta, Hunt, Johnson, Parker, Wise	5	9
Texas Counties Outside Metroplex	37	74
Out of State	8	8
Foreign Countries	14	25

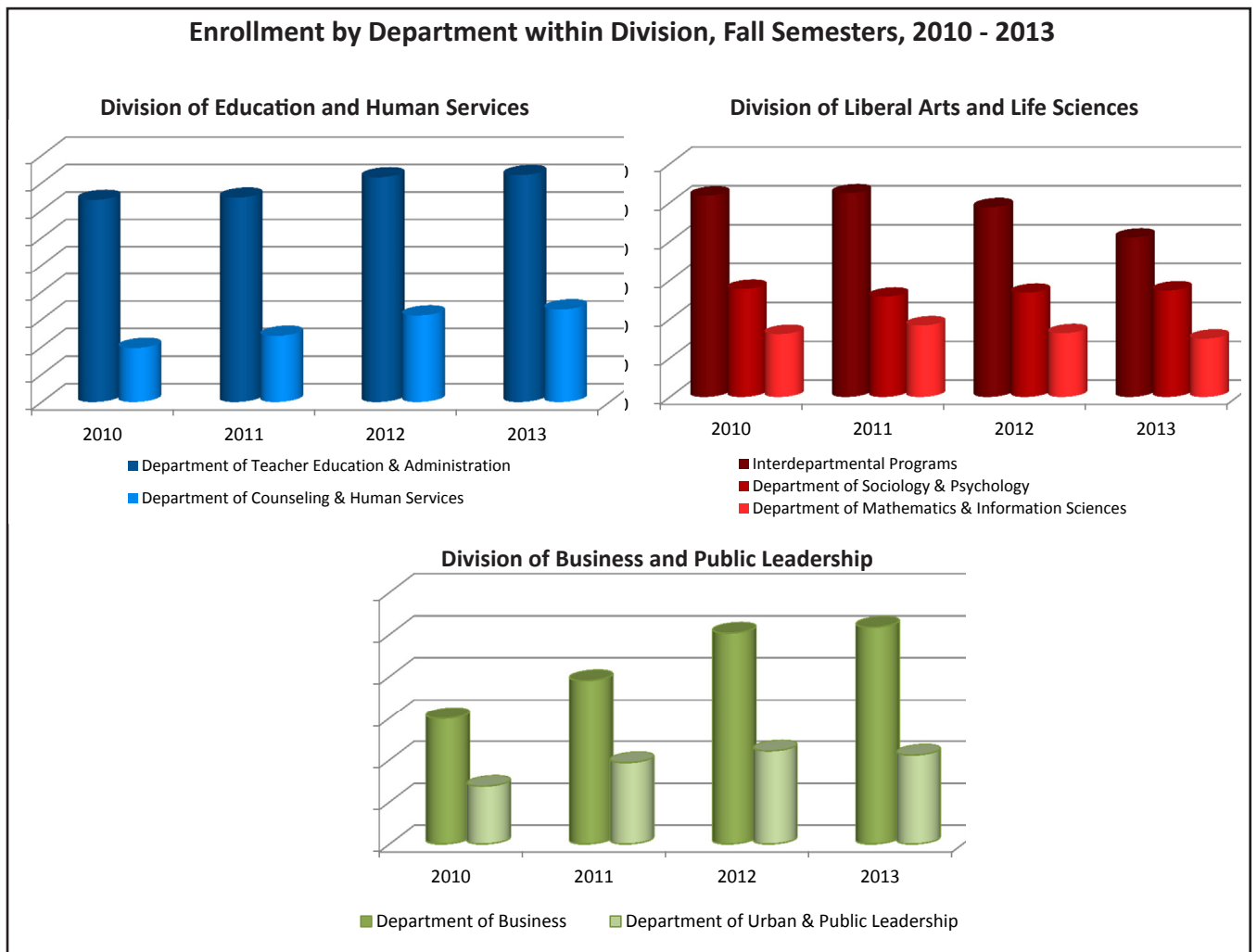
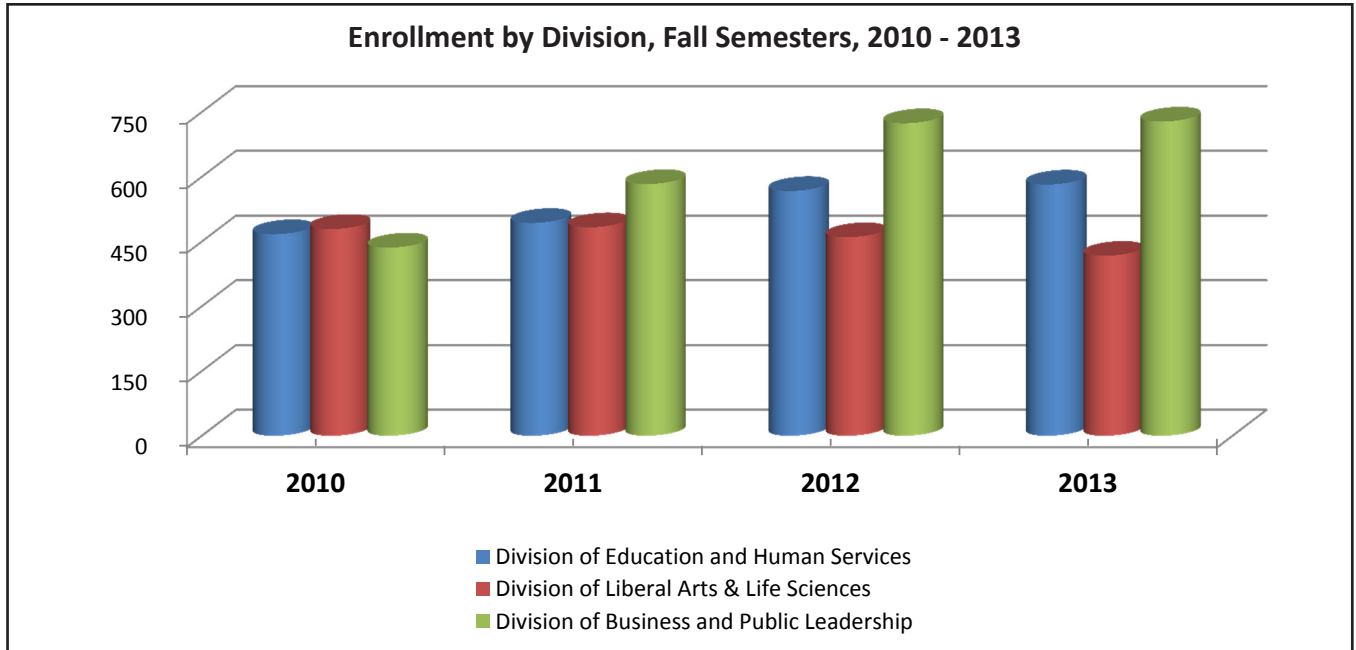
Geographic Profile of Students, Fall 2013

The majority of UNT Dallas students come from the Dallas-Fort Worth metropolitan area. The largest concentration of students is from Dallas County, but 48 other Texas counties, 8 states, and 14 foreign countries are represented in the student body.

Enrolled Students by Program, Fall Terms

Administrative Unit	Fall Enrollment			
	2010	2011	2012	2013
Enrollment Total	2,084	2,032	2,100	2,140
Division of Business and Public Leadership	436	583	724	728
Department of Business	299	390	503	517
Accounting Control Systems, BS	18	17	16	23
Accounting, BBA	11	23	19	22
Pre-Accounting	1	35	61	32
Entrepreneurship, BBA	3	11	7	5
Finance, BBA	20	27	23	18
General Business, BBA	56	49	43	49
Business Undetermined	159	189	266	293
Organizational Behavior & HR Mgmt., BBA	18	23	22	27
Business Administration, MBA	1	11	40	35
Logistics & Supply Chain Management., BS	12	5	6	13
Department of Urban & Public Leadership	137	193	221	211
Criminal Justice, BS	127	185	213	207
Criminal Justice, MS	10	8	8	4
Division of Education and Human Services	467	493	567	582
Department of Counseling & Human Services	98	120	157	168
Counseling, MED, MS	59	74	89	83
Human Services Management & Leadership, BS	39	46	68	85
Department of Teacher Education & Administration	369	373	410	414
Educational Administration, MED	128	100	80	75
Interdisciplinary Studies, BS	241	273	330	339
Division of Liberal Arts & Life Sciences	479	483	460	417
Applied Arts & Sciences, BAAS	238	237	210	174
Undecided	21	25	34	31
Department of Languages and Communications				
Department of Life and Health Sciences				
Department of Mathematics & Information Sciences	81	92	82	75
Information Sciences, BA	35	37	44	39
Pre-Information Technology	12	5	2	3
Mathematics, BA	34	50	36	33
Department of Social Sciences				
Department of Sociology & Psychology	139	129	134	137
Sociology, BA	139	129	134	137
UNTD Second Degrees (Post-Baccalaureate)	24	43	39	44
UNT Academic Programs	678	430	310	369

Enrollment Charts by Division and Department, Fall Terms



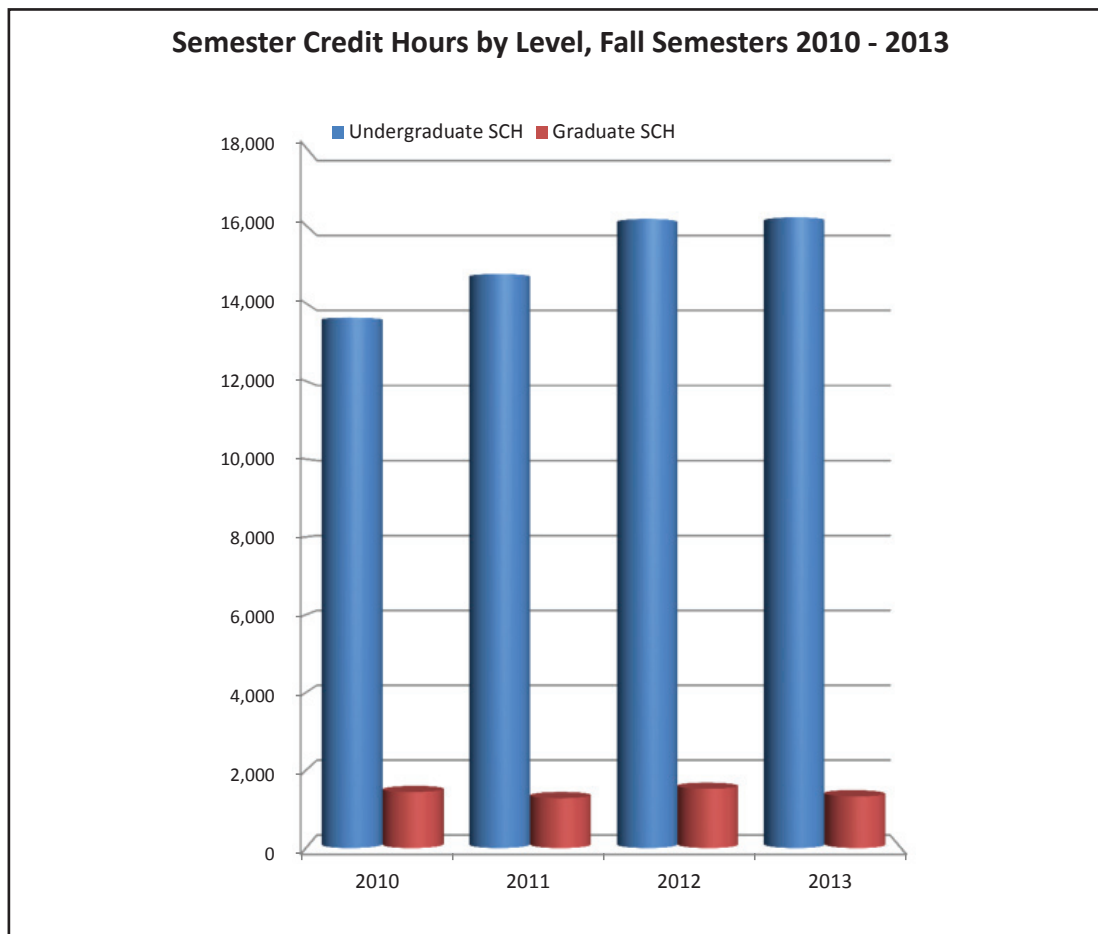
Enrolled Students by Program, Spring Terms

Administrative Unit	Spring Enrollment			
	2011	2012	2013	2014
Total Enrollment	1,925	1,901	2,010	2,104
Division of Business and Public Leadership	494	569	678	650
Department of Business	347	389	471	466
Accounting Control Systems, BS	19	15	18	25
Accounting, BBA	20	25	26	24
Pre-Accounting	9	35	51	19
Entrepreneurship, BBA	6	9	8	6
Finance, BBA	21	31	24	30
General Business, BBA	71	45	57	45
Business Undetermined	164	177	212	242
Organizational Behavior & HR Mgmt., BBA	26	21	25	30
Business Administration, MBA	1	28	40	28
Logistics & Supply Chain Management., BS	10	3	10	17
Department of Urban & Public Leadership	147	180	207	184
Criminal Justice, BS	136	173	203	183
Criminal Justice, MS	11	7	4	1
Division of Education and Human Services	487	497	537	553
Department of Counseling & Human Services	98	135	169	164
Counseling, MED, MS	67	85	91	96
Human Services Management & Leadership, BS	31	50	78	68
Department of Teacher Education & Administration	389	362	368	389
Educational Administration, MED	129	91	73	75
Interdisciplinary Studies, BS	260	271	295	314
Division of Liberal Arts & Life Sciences	464	452	412	386
Applied Arts & Sciences, BAAS	245	211	175	176
Undecided	13	20	27	17
Department of Languages and Communications				
Department of Life and Health Sciences				
Department of Mathematics & Information Sciences	71	81	75	66
Information Sciences, BA	30	32	39	34
Pre-Information Technology	14	8	3	3
Mathematics, BA	27	41	33	29
Department of Social Sciences				
Department of Sociology & Psychology	135	140	135	127
Sociology, BA	135	140	135	127
UNT Second Degrees (Post-Baccalaureate)	27	49	43	39
UNT Academic Programs	453	334	340	476

**STUDENT
SEMESTER CREDIT
HOURS**

Semester Credit Hours and Full-time Equivalent by Level, Fall and Spring Terms

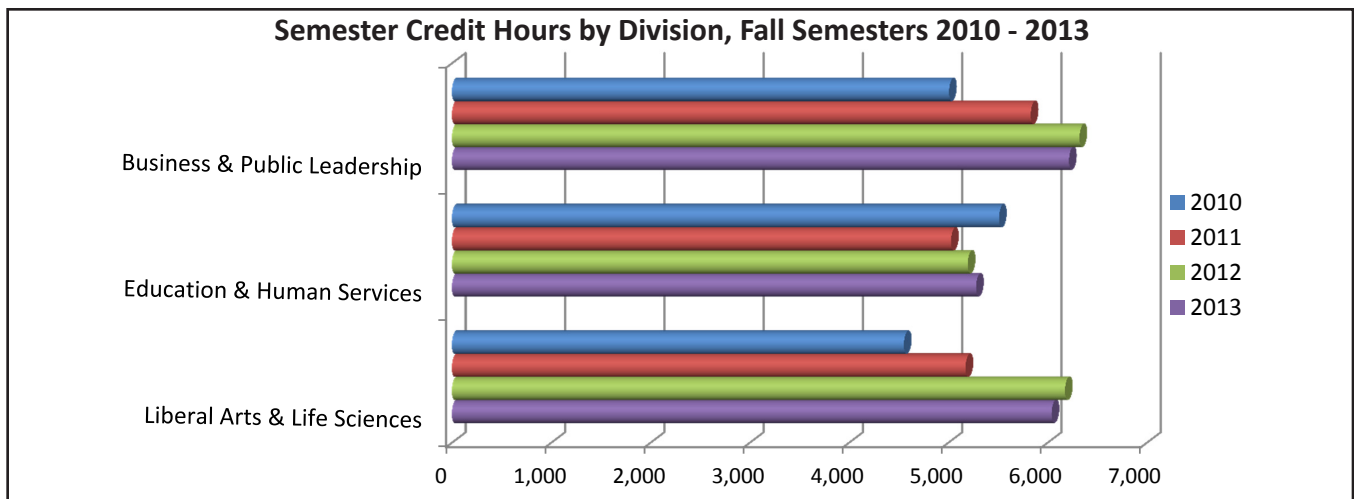
Fall Semester								
Measure/Level	2010		2011		2012		2013	
	N	%	N	%	N	%	N	%
Semester Credit Hours	15,072		16,033		17,694		17,537	
Undergraduate	13,632	90%	14,752	92%	16,167	91%	16,208	92%
Graduate	1,440	10%	1,281	8%	1,527	9%	1,329	8%
Full-time Student Equivalent (FTSE)	1,029		1,090		1,205		1,191	
Undergraduate	909	88%	983	90%	1,078	89%	1,081	91%
Graduate	120	12%	107	10%	127	11%	111	9%



Spring Semester								
Measure/Level	2011		2012		2013		2014	
	N	%	N	%	N	%	N	%
Semester Credit Hours	14,283		14,841		16,200		16,294	
Undergraduate	12,946	86%	13,413	84%	14,760	83%	14,983	85%
Graduate	1,337	9%	1,428	9%	1,440	8%	1,311	7%
Full-time Student Equivalent (FTSE)	974		1,013		1,104		1,108	
Undergraduate	863	89%	894	88%	984	89%	999	90%
Graduate	111	11%	119	12%	120	11%	109	10%

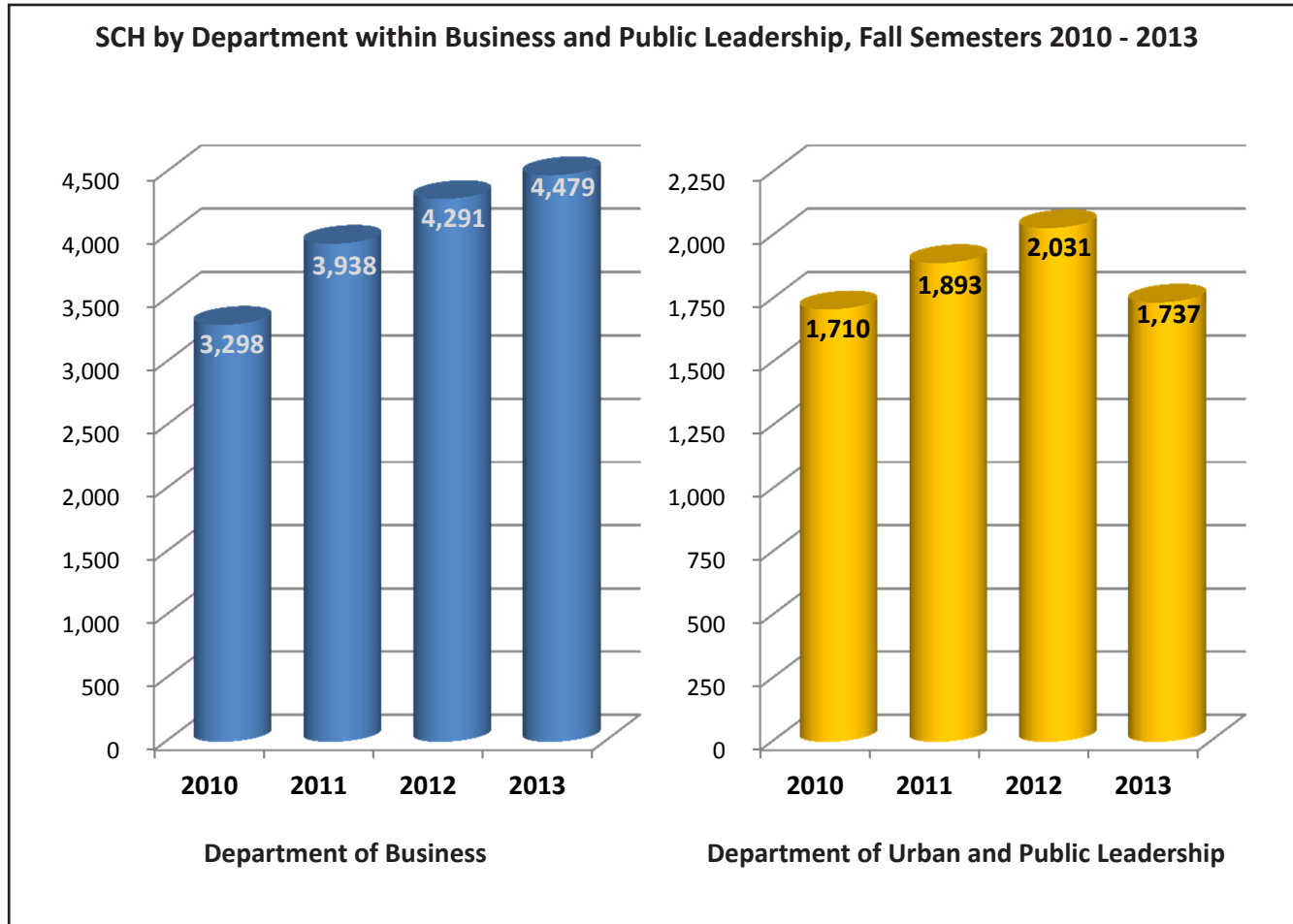
Semester Credit Hours by Division and Department, Fall and Spring Terms

Administrative Unit	Fall Semester Credit Hours			
	2010	2011	2012	2013
Semester Credit Hour Total	15,072	16,033	17,694	17,537
Division of Business and Public Leadership	5,008	5,831	6,322	6,216
Department of Business	3,298	3,938	4,291	4,479
Department of Urban & Public Leadership	1,710	1,893	2,031	1,737
Division of Education and Human Services	5,511	5,028	5,196	5,280
Department of Counseling & Human Services	2,304	2,007	2,031	1,875
Department of Teacher Education & Administration	3,207	3,021	3,165	3,405
Division of Liberal Arts & Life Sciences	4,553	5,174	6,176	6,041
Department of Languages and Communications	669	1,062	1,545	1,285
Department of Life and Health Sciences	294	455	637	697
Department of Mathematics & Information Sciences	908	1,266	1,384	1,491
Department of Social Sciences	426	462	822	912
Department of Sociology & Psychology	2,256	1,929	1,788	1,656



Administrative Unit	Spring Semester Credit Hours			
	2011	2012	2013	2014
Semester Credit Hour Total	14,283	14,841	16,200	16,294
Division of Business and Public Leadership	5,156	5,469	6,113	6,253
Department of Business	3,650	3,678	4,064	4,512
Department of Urban & Public Leadership	1,506	1,791	2,049	1,741
Division of Education and Human Services	5,144	4,902	4,969	5,016
Department of Counseling & Human Services	2,036	2,085	2,130	2,238
Department of Teacher Education & Administration	3,108	2,817	2,839	2,778
Division of Liberal Arts & Life Sciences	3,983	4,470	5,118	5,025
Department of Languages and Communications	483	750	984	870
Department of Life and Health Sciences	389	379	609	651
Department of Mathematics & Information Sciences	759	953	1,066	1,099
Department of Social Sciences	441	570	1,032	828
Department of Sociology & Psychology	1,911	1,818	1,427	1,577

Semester Credit Hours, Division of Business and Public Leadership, Fall Semesters

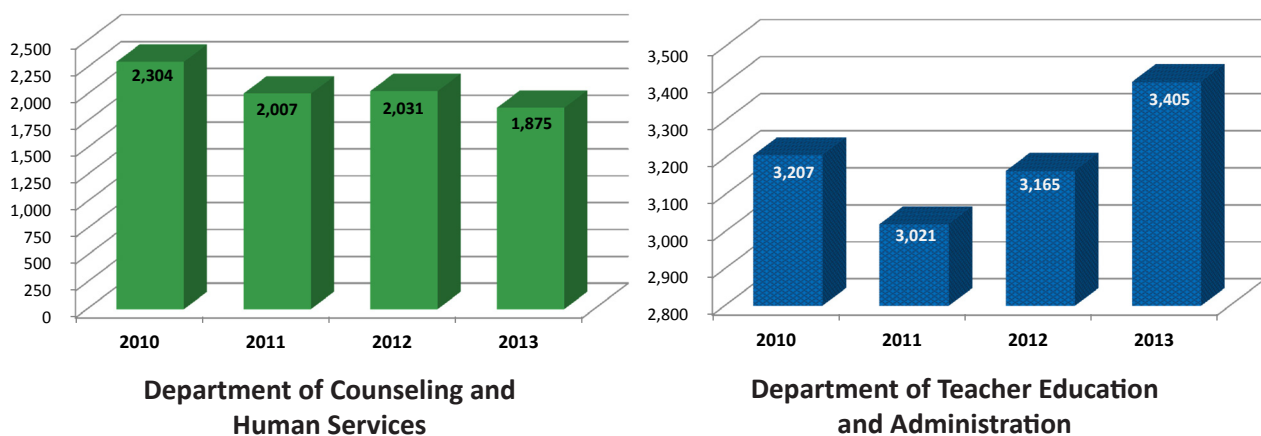


Administrative Unit	Fall Semester Credit Hours			
	2010	2011	2012	2013
Division of Business and Public Leadership	5,008	5,831	6,322	6,216
Department of Business	3,298	3,938	4,291	4,479
ACCT	229	512	388	534
BCIS	246	270	357	342
BLAW	117	117	180	258
BUSI	96	114	105	168
DSCI	423	573	648	660
ECON	195	252	288	294
FINA	405	438	420	324
LSCM	78	96	42	99
MGMT	1,065	1,092	1,377	1,296
MKGT	390	366	417	438
REAL	54	108	69	66
Department of Urban & Public Leadership	1,710	1,893	2,031	1,737
CJUS	1,710	1,893	2,031	1,737

Semester Credit Hours, Division of Education and Human Services, Fall Semesters

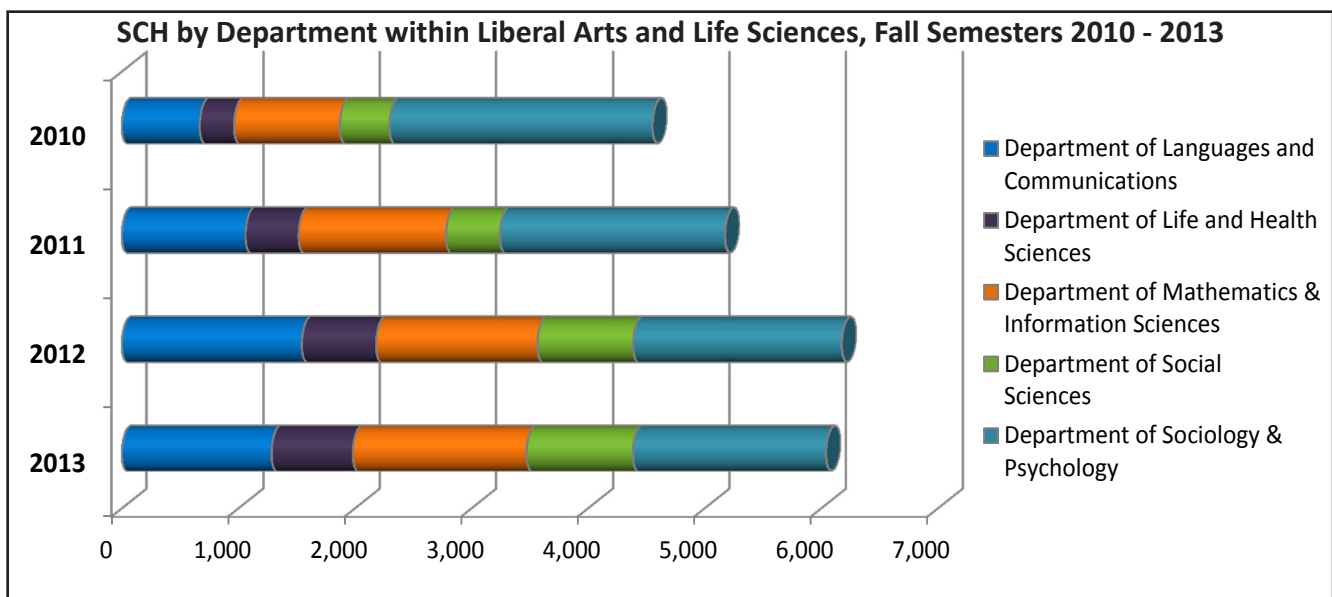
Administrative Unit	Fall Semester Credit Hours			
	2010	2011	2012	2013
Division of Education and Human Services	5,511	5,028	5,196	5,280
Department of Counseling & Human Services	2,304	2,007	2,031	1,875
AECO	396	0	0	0
AGER	165	129	48	45
COMS	135	0	0	0
COUN	327	603	597	519
DFST	69	96	102	117
HSML	348	405	480	414
PACS	0	318	306	312
RHAB	684	384	375	384
SOWK	180	72	123	84
Department of Teacher Education & Administration	3,207	3,021	3,165	3,405
AEAH	0	51	102	31
EDAD	816	585	477	444
EDBE	327	432	447	540
EDEC	252	270	447	381
EDEE	549	456	426	669
EDME	6	36	6	24
EDRE	303	225	228	312
EDSE	114	123	96	30
EDSP	219	183	186	204
EPSY	36	39	0	0
KINE	252	231	255	267
LING	198	270	342	366
LTEC	135	120	153	84
MUED	0	0	0	25
THEA	0	0	0	28

SCH by Department within Education and Human Services, Fall Semesters 2010 - 2013

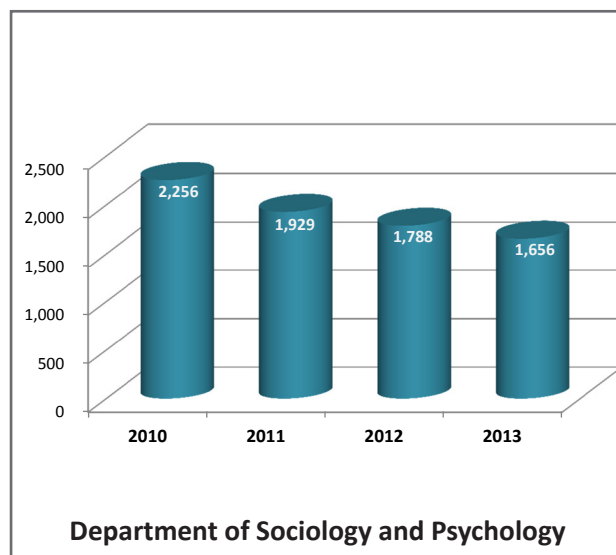
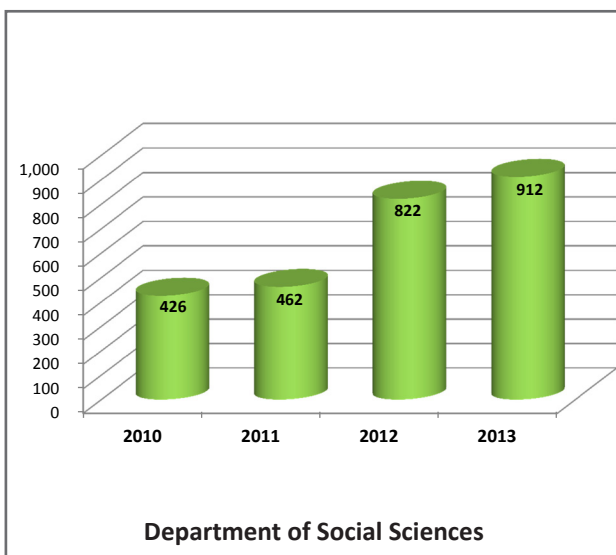
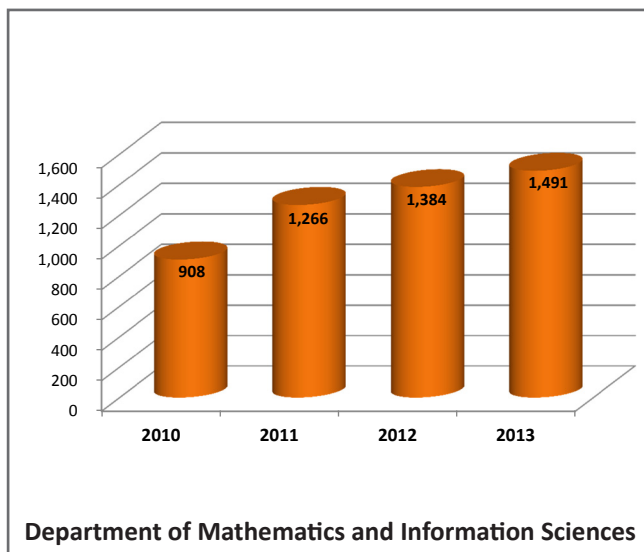
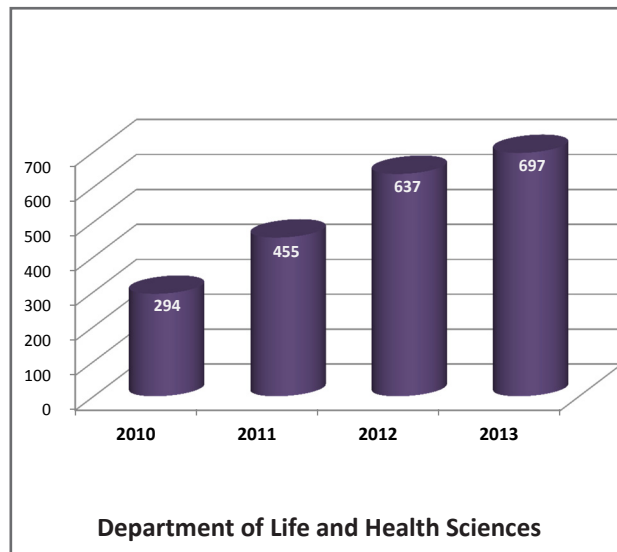
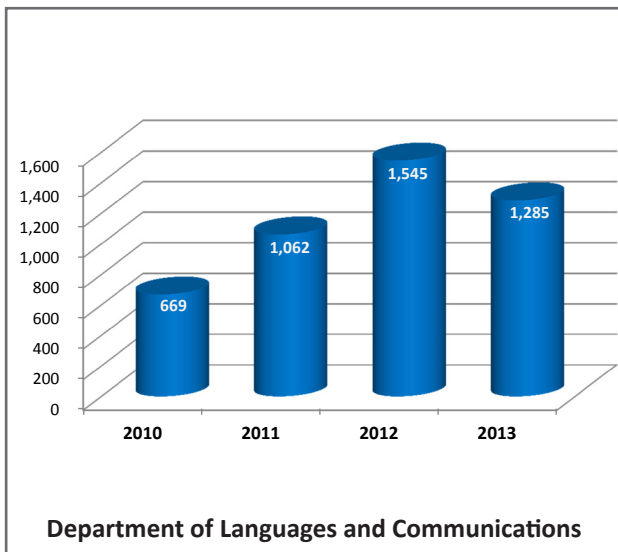


Semester Credit Hours, Division of Liberal Arts and Life Sciences, Fall Semesters

Administrative Unit	Fall Semester Credit Hours			
	2010	2011	2012	2013
Division of Liberal Arts & Life Sciences	4,553	5,174	6,176	6,041
Department of Languages and Communications	669	1,062	1,545	1,285
ART	201	195	279	216
COMM	87	153	165	240
ENGL	237	432	534	477
SPAN	39	55	90	90
TECM	105	201	225	198
UCRS	0	0	0	0
UGST	0	26	252	64
Department of Life and Health Sciences	294	455	637	697
BIOL	232	254	442	523
CHEM	62	111	114	93
HLTH	0	90	81	81
PHYS	0	0	0	0
Department of Mathematics & Information Sciences	908	1,266	1,384	1,491
CSCE	328	203	169	195
LTEC	0	0	0	0
MATH	580	1,063	1,215	1,194
UGMT	0	0	0	102
Department of Social Sciences	426	462	822	912
GEOG	0	0	0	36
HIST	216	273	375	435
PSCI	210	189	447	441
Department of Sociology & Psychology	2,256	1,929	1,788	1,656
PSYC	180	159	243	201
SOCI	2,076	1,770	1,545	1,455



SCH by Department within Liberal Arts and Life Sciences, Fall Semesters 2010 - 2013



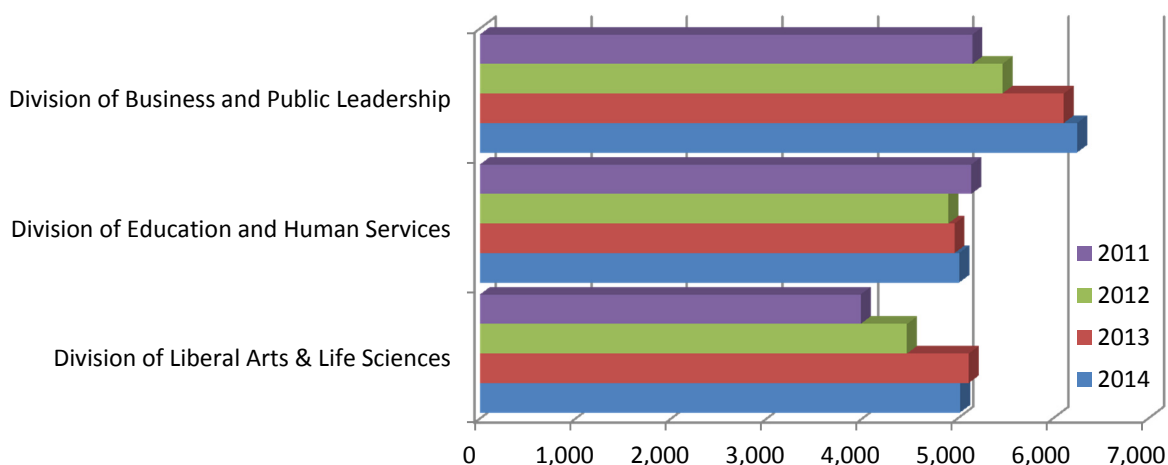
Semester Credit Hours by Course Prefix, Spring Semesters

Administrative Unit	Spring Semester Credit Hours			
	2011	2012	2013	2014
Semester Credit Hour Total	14,283	14,841	16,200	16,294
Division of Business and Public Leadership	5,156	5,469	6,113	6,253
Department of Business	3,650	3,678	4,064	4,512
ACCT	431	540	440	489
BCIS	294	279	396	399
BLAW	186	258	327	399
BUSI	72	105	171	147
DSCI	474	339	534	513
ECON	120	207	189	222
FINA	375	471	453	489
LSCM	48	63	75	132
MGMT	1,161	984	1,032	1,200
MKGT	384	369	369	480
REAL	105	63	78	42
Department of Urban & Public Leadership	1,506	1,791	2,049	1,741
CJUS	1,506	1,791	2,049	1,741
Division of Education and Human Services	5,144	4,902	4,969	5,016
Department of Counseling & Human Services	2,036	2,085	2,130	2,238
AECO	504	0	0	0
AGER	144	144	111	186
COMS	141	0	0	0
COUN	371	525	525	543
DFST	132	132	222	225
HSML	297	267	264	234
PACS	0	549	534	573
RHAB	336	372	390	402
SOWK	111	96	84	75
Department of Teacher Education & Administration	3,108	2,817	2,839	2,778
AEAH	30	0	105	43
EDAD	807	543	414	453
EDBE	555	408	450	345
EDEC	60	198	249	264
EDEE	522	528	465	567
EDME	27	24	24	15
EDRE	309	261	336	321
EDSE	24	114	70	48
EDSP	141	129	99	165
EPSY	63	39	57	48
KINE	258	222	141	153
LING	177	222	309	270
LTEC	0	129	120	0
MUED	135	0	0	41
THEA	0	0	0	45

Semester Credit Hours by Course Prefix, Spring Semesters (continued)

Administrative Unit	Spring Semester Credit Hours			
	2011	2012	2013	2014
Division of Liberal Arts & Life Sciences	3,983	4,470	5,118	5,025
Department of Languages and Communications	483	750	984	870
ART	78	138	210	210
COMM	57	84	105	108
ENGL	195	237	390	333
ENGR	0	6	0	0
SPAN	54	60	69	63
TECM	99	195	201	156
UCRS	0	30	9	0
Department of Life and Health Sciences	389	379	609	651
BIOL	200	170	388	389
CHEM	90	125	101	133
HLTH	84	63	96	96
PHYS	15	21	24	33
Department of Mathematics & Information Sciences	759	953	1,066	1,099
CSCE	249	126	154	223
MATH	510	827	870	789
UGMT	0	0	42	87
Department of Social Sciences	441	570	1,032	828
GEOG	39	63	96	132
HIST	210	231	450	342
PSCI	192	276	486	354
Department of Sociology & Psychology	1,911	1,818	1,427	1,577
PSYC	102	114	107	116
SOCI	1,809	1,704	1,320	1,461

Semester Credit Hours by Division, Spring Semesters 2010 - 2014



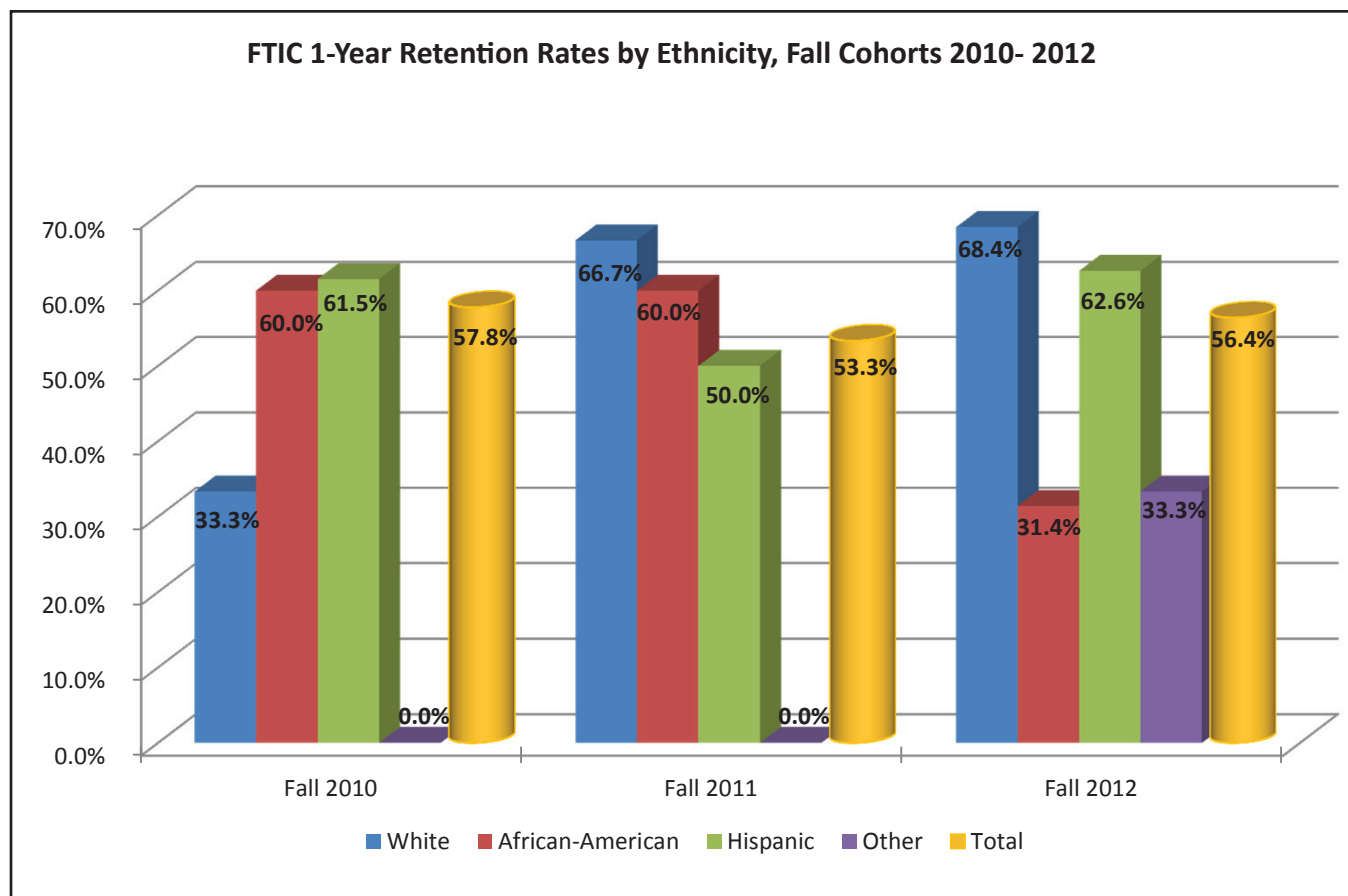
RETENTION AND GRADUATION

First Time In College (FTIC) Retention

Fall 2010 Cohort							
Ethnicity	Enrollment Cohort Base	After 1 Year		After 2 Years		After 3 Years	
		Enrolled	Rate	Enrolled	Rate	Enrolled	Rate
Retention							
<i>White</i>	3	1	33.3%	1	33.3%	0	0.0%
<i>African-American</i>	15	9	60.0%	10	66.7%	7	46.7%
<i>Hispanic</i>	26	16	61.5%	14	53.8%	13	50.0%
<i>Other</i>	1	0	0.0%	0	0.0%	0	0.0%
Total	45	26	57.8%	25	55.6%	20	44.4%
Graduation							
<i>White</i>		N/A	N/A	N/A	N/A	1	33.3%
<i>African-American</i>		N/A	N/A	N/A	N/A	0	0.0%
<i>Hispanic</i>		N/A	N/A	N/A	N/A	1	3.8%
<i>Other</i>		N/A	N/A	N/A	N/A	0	0.0%
Total						2	4.4%
Fall 2011 Cohort							
Ethnicity	Enrollment Cohort Base	After 1 Year		After 2 Years		After 3 Years	
		Enrolled	Rate	Enrolled	Rate	Enrolled	Rate
Retention							
<i>White</i>	6	4	66.7%	2	33.3%	N/A	N/A
<i>African-American</i>	20	12	60.0%	4	20.0%	N/A	N/A
<i>Hispanic</i>	48	24	50.0%	18	37.5%	N/A	N/A
<i>Other</i>	1	0	0.0%	0	0.0%	N/A	N/A
Total	75	40	53.3%	24	32.0%		
Graduation							
<i>White</i>		N/A	N/A	N/A	N/A	N/A	N/A
<i>African-American</i>		N/A	N/A	N/A	N/A	N/A	N/A
<i>Hispanic</i>		N/A	N/A	N/A	N/A	N/A	N/A
<i>Other</i>		N/A	N/A	N/A	N/A	N/A	N/A
Total							
Fall 2012 Cohort							
Ethnicity	Enrollment Cohort Base	After 1 Year		After 2 Years		After 3 Years	
		Enrolled	Rate	Enrolled	Rate	Enrolled	Rate
Retention							
<i>White</i>	19	13	68.4%	N/A	N/A	N/A	N/A
<i>African-American</i>	35	11	31.4%	N/A	N/A	N/A	N/A
<i>Hispanic</i>	115	72	62.6%	N/A	N/A	N/A	N/A
<i>Other</i>	3	1	33.3%	N/A	N/A	N/A	N/A
Total	172	97	56.4%				
Graduation							
<i>White</i>		N/A	N/A	N/A	N/A	N/A	N/A
<i>African-American</i>		N/A	N/A	N/A	N/A	N/A	N/A
<i>Hispanic</i>		N/A	N/A	N/A	N/A	N/A	N/A
<i>Other</i>		N/A	N/A	N/A	N/A	N/A	N/A
Total							

First Time In College (FTIC) Retention (continued)

Fall 2013 Cohort							
Ethnicity	Enrollment Cohort Base	After 1 Year		After 2 Years		After 3 Years	
		Enrolled	Rate	Enrolled	Rate	Enrolled	Rate
Retention							
White	4	N/A	N/A	N/A	N/A	N/A	N/A
African-American	21	N/A	N/A	N/A	N/A	N/A	N/A
Hispanic	84	N/A	N/A	N/A	N/A	N/A	N/A
Other	13	N/A	N/A	N/A	N/A	N/A	N/A
Total	122						
Graduation							
White		N/A	N/A	N/A	N/A	N/A	N/A
African-American		N/A	N/A	N/A	N/A	N/A	N/A
Hispanic		N/A	N/A	N/A	N/A	N/A	N/A
Other		N/A	N/A	N/A	N/A	N/A	N/A
Total							



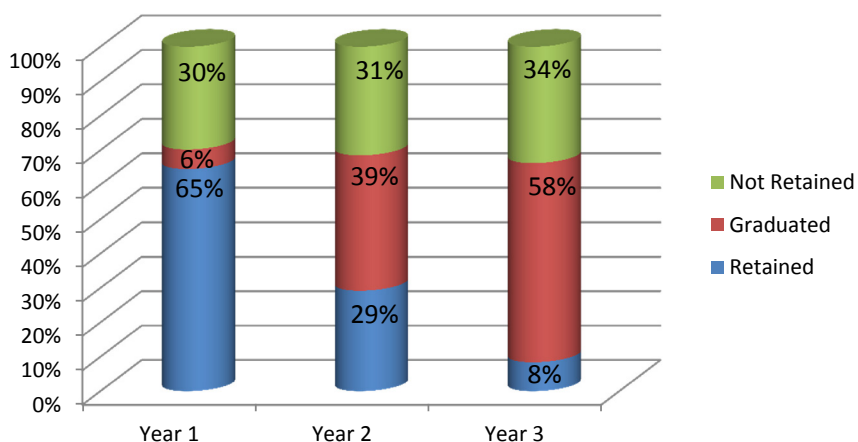
New Undergraduate Transfer Retention

Fall 2010 Cohort							
Ethnicity	Enrollment Cohort Base	After 1 Year		After 2 Years		After 3 Years	
		Count	Rate	Count	Rate	Count	Rate
Retention							
<i>White</i>	25	21	84.0%	9	36.0%	2	8.0%
<i>African-American</i>	94	52	55.3%	25	26.6%	8	8.5%
<i>Hispanic</i>	46	34	73.9%	14	30.4%	5	10.9%
<i>Other</i>	13	8	61.5%	4	30.8%	0	0.0%
Total	178	115	64.6%	52	29.2%	15	8.4%
Graduation (cummulative)							
<i>White</i>		1	4.0%	9	36.0%	18	72.0%
<i>African-American</i>		8	8.5%	35	37.2%	48	51.1%
<i>Hispanic</i>		0	0.0%	23	50.0%	32	69.6%
<i>Other</i>		1	7.7%	3	23.1%	5	38.5%
Total		10	5.6%	70	39.3%	103	57.9%
Fall 2011 Cohort							
Ethnicity	Enrollment Cohort Base	After 1 Year		After 2 Years		After 3 Years	
		Count	Rate	Count	Rate	Count	Rate
Retention							
<i>White</i>	36	25	69.4%	13	36.1%	N/A	N/A
<i>African-American</i>	101	60	59.4%	23	22.8%	N/A	N/A
<i>Hispanic</i>	43	33	76.7%	15	34.9%	N/A	N/A
<i>Other</i>	9	7	77.8%	2	22.2%	N/A	N/A
Total	189	125	66.1%	53	28.0%		
Graduation (cummulative)							
<i>White</i>		3	8.3%	15	41.7%	N/A	N/A
<i>African-American</i>		3	3.0%	30	29.7%	N/A	N/A
<i>Hispanic</i>		2	4.7%	10	23.3%	N/A	N/A
<i>Other</i>		0	0.0%	5	55.6%	N/A	N/A
Total		8	4.2%	60	31.7%		
Fall 2012 Cohort							
Ethnicity	Enrollment Cohort Base	After 1 Year		After 2 Years		After 3 Years	
		Count	Rate	Count	Rate	Count	Rate
Retention							
<i>White</i>	42	24	57.1%	N/A	N/A	N/A	N/A
<i>African-American</i>	89	59	66.3%	N/A	N/A	N/A	N/A
<i>Hispanic</i>	86	66	76.7%	N/A	N/A	N/A	N/A
<i>Other</i>	11	8	72.7%	N/A	N/A	N/A	N/A
Total	228	157	68.9%				
Graduation							
<i>White</i>		2	4.8%	N/A	N/A	N/A	N/A
<i>African-American</i>		2	2.2%	N/A	N/A	N/A	N/A
<i>Hispanic</i>		0	0.0%	N/A	N/A	N/A	N/A
<i>Other</i>		0	0.0%	N/A	N/A	N/A	N/A
Total		4	1.8%				

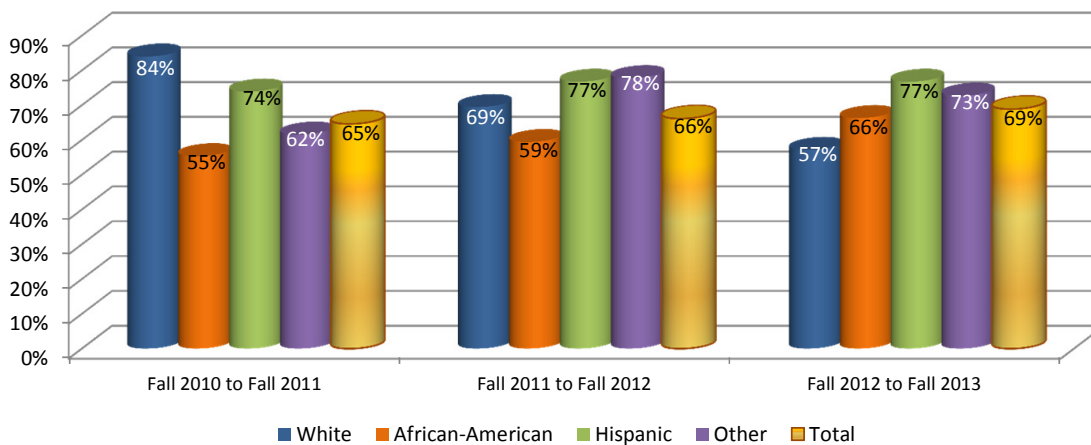
New Undergraduate Transfer Retention (continued)

Fall 2013 Cohort							
Ethnicity	Enrollment Cohort Base	After 1 Year		After 2 Years		After 3 Years	
		Count	Rate	Count	Rate	Count	Rate
Retention							
White	32	N/A	N/A	N/A	N/A	N/A	N/A
African-American	96	N/A	N/A	N/A	N/A	N/A	N/A
Hispanic	86	N/A	N/A	N/A	N/A	N/A	N/A
Other	18	N/A	N/A	N/A	N/A	N/A	N/A
Total	232						
Graduation							
White		N/A	N/A	N/A	N/A	N/A	N/A
African-American		N/A	N/A	N/A	N/A	N/A	N/A
Hispanic		N/A	N/A	N/A	N/A	N/A	N/A
Other		N/A	N/A	N/A	N/A	N/A	N/A
Total							

Retention/Graduation Rates by Year, Fall Transfer Cohort 2010



1-Year Retention Rates, Fall Transfer Cohorts 2010 - 2012



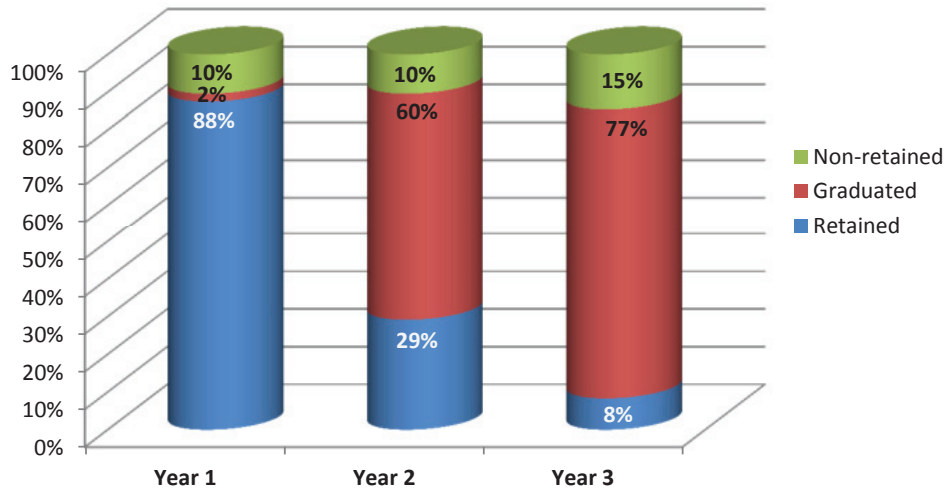
New Graduate Retention

Fall 2010 Cohort							
Ethnicity	Enrollment Cohort Base	After 1 Year		After 2 Years		After 3 Years	
		Count	Rate	Count	Rate	Count	Rate
Retention							
<i>White</i>	11	10	90.9%	5	45.5%	0	0.0%
<i>African-American</i>	29	26	89.7%	7	24.1%	2	6.9%
<i>Hispanic</i>	7	5	71.4%	2	28.6%	2	28.6%
<i>Other</i>	1	1	100.0%	0	0.0%	0	0.0%
Total	48	42	87.5%	14	29.2%	4	8.3%
Graduation (cummulative)							
<i>White</i>		0	0.0%	6	54.5%	10	90.9%
<i>African-American</i>		1	3.4%	21	72.4%	24	82.8%
<i>Hispanic</i>		0	0.0%	1	14.3%	2	28.6%
<i>Other</i>		0	0.0%	1	100.0%	1	100.0%
Total		1	2.1%	29	60.4%	37	77.1%
Fall 2011 Cohort							
Ethnicity	Enrollment Cohort Base	After 1 Year		After 2 Years		After 3 Years	
		Count	Rate	Count	Rate	Count	Rate
Retention							
<i>White</i>	7	6	85.7%	2	28.6%	N/A	N/A
<i>African-American</i>	25	23	92.0%	11	44.0%	N/A	N/A
<i>Hispanic</i>	15	13	86.7%	1	6.7%	N/A	N/A
<i>Other</i>	1	1	100.0%	0	0.0%	N/A	N/A
Total	48	43	89.6%	14	29.2%		
Graduation (cummulative)							
<i>White</i>		0	0.0%	4	57.1%	N/A	N/A
<i>African-American</i>		0	0.0%	9	36.0%	N/A	N/A
<i>Hispanic</i>		0	0.0%	10	66.7%	N/A	N/A
<i>Other</i>		0	0.0%	1	100.0%	N/A	N/A
Total		0	0.0%	24	50.0%		
Fall 2012 Cohort							
Ethnicity	Enrollment Cohort Base	After 1 Year		After 2 Years		After 3 Years	
		Count	Rate	Count	Rate	Count	Rate
Retention							
<i>White</i>	8	7	87.5%	N/A	N/A	N/A	N/A
<i>African-American</i>	28	22	78.6%	N/A	N/A	N/A	N/A
<i>Hispanic</i>	17	13	76.5%	N/A	N/A	N/A	N/A
<i>Other</i>	2	1	50.0%	N/A	N/A	N/A	N/A
Total	55	43	78.2%				
Graduation							
<i>White</i>		0	0.0%	N/A	N/A	N/A	N/A
<i>African-American</i>		0	0.0%	N/A	N/A	N/A	N/A
<i>Hispanic</i>		0	0.0%	N/A	N/A	N/A	N/A
<i>Other</i>		0	0.0%	N/A	N/A	N/A	N/A
Total		0	0.0%				

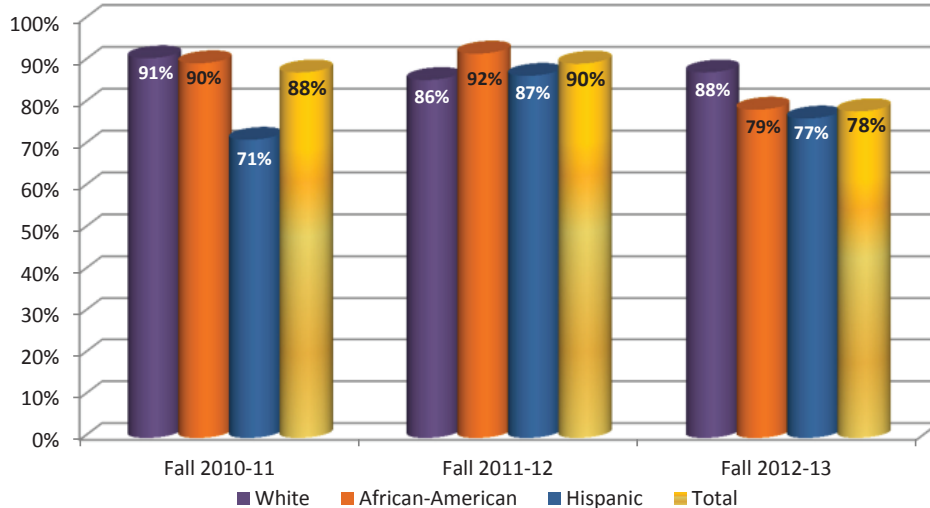
New Graduate Retention (continued)

Fall 2013 Cohort							
Ethnicity	Enrollment Cohort Base	After 1 Year		After 2 Years		After 3 Years	
		Count	Rate	Count	Rate	Count	Rate
Retention							
White	5	N/A	N/A	N/A	N/A	N/A	N/A
African-American	22	N/A	N/A	N/A	N/A	N/A	N/A
Hispanic	17	N/A	N/A	N/A	N/A	N/A	N/A
Other	0	N/A	N/A	N/A	N/A	N/A	N/A
Total	44						
Graduation							
White		N/A	N/A	N/A	N/A	N/A	N/A
African-American		N/A	N/A	N/A	N/A	N/A	N/A
Hispanic		N/A	N/A	N/A	N/A	N/A	N/A
Other		N/A	N/A	N/A	N/A	N/A	N/A
Total							

New Graduate Retention/Graduation Rates by Year, Fall Cohort 2010

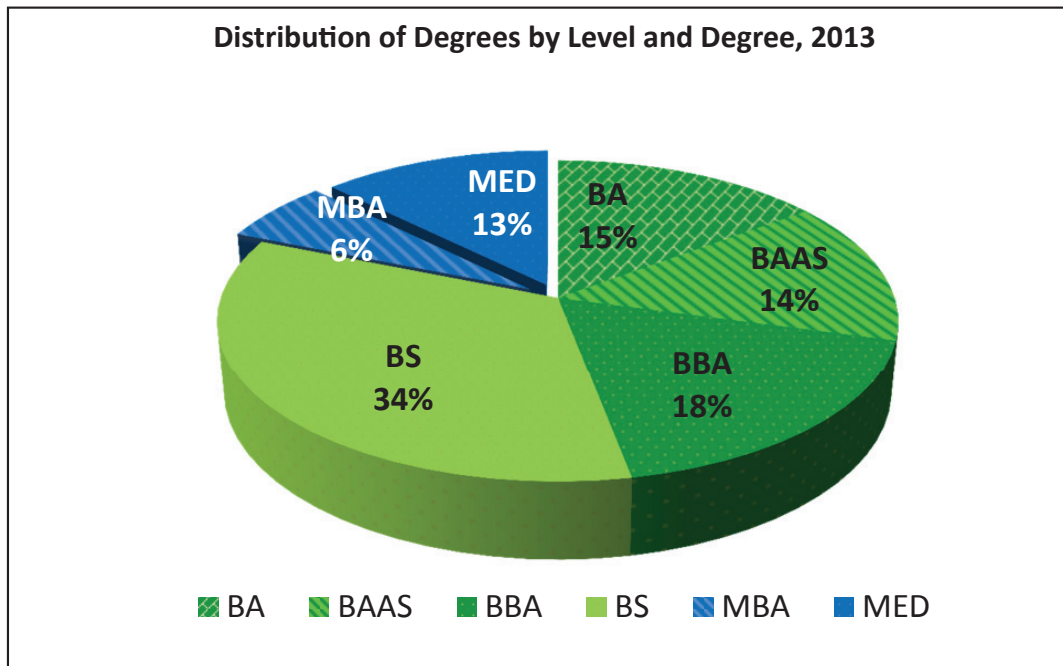


New Graduate 1-Year Retention Rates, Fall Cohorts 2010 - 2012



Degrees Received by Level

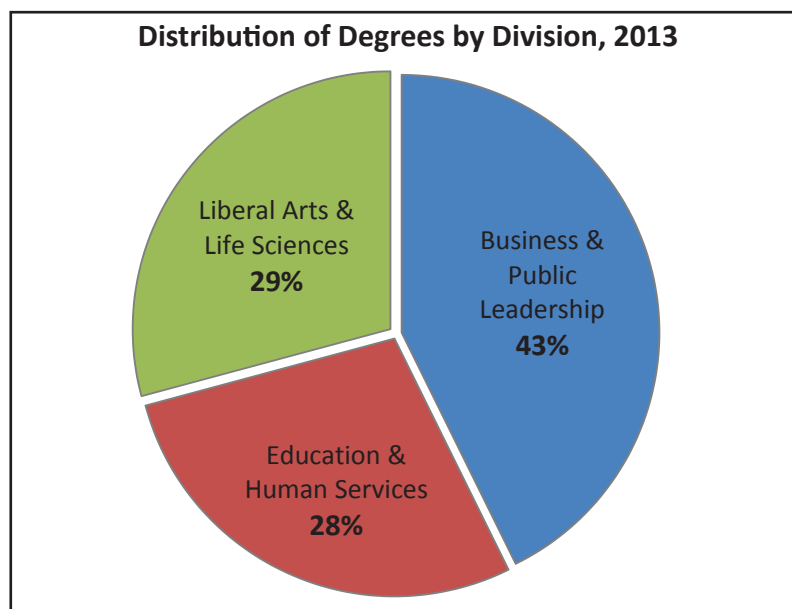
Level and Degree	Calendar Year 2013			
	Spring	Summer	Fall	Total
Baccalaureate	147	60	171	378
BA	23	18	28	69
BAAS	22	15	30	67
BBA	41	15	27	83
BS	61	12	86	159
Graduate	27	32	29	88
MBA	10	5	14	29
MED	17	27	15	59
Total Degrees Received	174	92	200	466



Division and Degree	Calendar Year 2013			
	Spring	Summer	Fall	Total
Division of Business and Public Leadership	84	30	85	199
BBA	41	15	27	83
BS	33	10	44	87
MBA	10	5	14	29
Division of Education and Human Services	45	29	57	131
BS	28	2	42	72
MED	17	27	15	59
Division of Liberal Arts & Life Sciences	45	33	58	136
BA	23	18	28	69
BAAS	22	15	30	67
Total Degrees Received	174	92	200	466

Degrees Received by Administrative Unit

Administrative Unit/Degree Plan	Calendar Year 2013			
	Spring	Summer	Fall	Total
Division of Business and Public Leadership	84	30	85	199
Department of Business	55	21	49	125
Accounting Control Systems, BS	1	1	5	7
Accounting, BBA	9	3	1	13
Business Administration, MBA	10	5	14	29
Entrepreneurship, BBA	2	1	0	3
Finance, BBA	8	0	2	10
General Business, BBA	10	8	18	36
Logistics & Supply Chain Management., BS	3	0	3	6
Organizational Behavior & HR Mgmt., BBA	12	3	6	21
Department of Urban & Public Leadership	29	9	36	74
Criminal Justice, BS	29	9	36	74
Division of Education and Human Services	45	29	57	131
Department of Counseling & Human Services	18	9	12	39
Counseling, MED, MS	11	8	6	25
Human Services Management & Leadership, BS	7	1	6	14
Department of Teacher Education & Administration	27	20	45	92
Educational Administration, MED	6	19	9	34
Interdisciplinary Studies, BS	21	1	36	58
Division of Liberal Arts & Life Sciences	45	33	58	136
Applied Arts & Sciences, BAAS	22	15	30	67
Department of Mathematics & Information Sciences	3	3	6	12
Information Sciences, BA	1	2	4	7
Mathematics, BA	2	1	2	5
Department of Sociology & Psychology	20	15	22	57
Sociology, BA	20	15	22	57
Total Degrees Received	174	92	200	466



**GLOSSARY
AND
CONTACT
INFORMATION**

Glossary of Terms

Academic Year - The period of time generally extending from September 1 to August 31 and including fall, spring, and summer semesters.

African-American - Ethnic category including those persons having origins in any of the black racial groups of Africa except those of Hispanic origin (self-reported).

American-Indian - American Indian/Alaskan Native ethnic category including persons having origins in any of the original people of North America and who maintain cultural identification through tribal affiliation or community recognition (self-reported).

Asian-American - Asian/Pacific Islander ethnic category including persons having origins in any of the original people of the Far East, Southeast Asia, the Indian Subcontinent, or Pacific Islands. This also includes people from China, Japan, Korea, the Philippine Islands, American Samoa, India, and Vietnam (self-reported).

Attrition Rate - Reported as a percentage, the portion of students in a cohort who do not graduate or re-enroll in the fall of the following year. This percentage is the difference between the retention rate and 100.00.

Census Date - The date designated each term for collecting official statistics including head count and semester credit hours. For fall and spring terms, the census date is the 12th class day of the term.

Certification - A formal award certifying the satisfactory completion of a postsecondary education program.

Classification - A categorization of students determined by the number of semester credit hours earned (freshman: 0-29, sophomore: 30-59, junior: 60-89, senior: 90 or more, post-baccalaureate: earned baccalaureate degree and not admitted to master's program, master's: earned baccalaureate degree and accepted in a master's level program).

Cohort - Individuals with similar characteristics who are grouped for research purposes. Once identified for a cohort, individuals remain in the group unless they meet the study design's criteria for exclusion. In the case of the freshman cohort for persistence rates, students remain in the cohort unless they leave school to serve in the armed services. Other factors, such as withdrawing from school, or transferring to another institution, do not take a student out of the cohort.

Continuing - Currently enrolled students who were enrolled at the university during the previous fall or spring semester, or in the case of fall enrollees, students who were enrolled during either the previous summer or spring semester.

Current Admission Status - The status that a student was admitted in the current term such as first-time-in-college, transfer, or continuing. New undergraduate students are identified as either 'FTIC' or 'New UG Transfer'. New graduate students are identified as 'New GRAD'.

Degree-seeking Students - Students enrolled in courses for credit who are recognized by the institution as seeking a degree or formal award.

Enrollment - Official census date head count during each term.

Ethnicity - Self-reported racial/ethnic categories used to describe groups to which individuals identify. Used for United States citizens and resident aliens who fall into one of five categories (White, African-American, Hispanic, Asian-American, American-Indian) and Internationals. Internationals would include those persons who are not citizens of the United States and who are in this country on a temporary basis and do not have the right to remain indefinitely.

Faculty FTE (FTFE) - Full-time equivalent is 100% faculty teaching load, which typically equals 12 semester credit hours or 12 work units. For each faculty member, the full-time faculty equivalent equals the sum total of budgeted faculty appointment percentages.

Fiscal Year - The period of time extending from September 1 to August 31. (FY13 represents the fiscal year which begins September 1, 2012, and ends August 31, 2013).

Freshman - An undergraduate student who has completed 0-29 semester hours.

FTE - Full-Time Equivalent. See *Faculty FTE (FTFE)* or *Student FTE (FTSE)* for definitions and formulas.

FTIC, First-time-in-college - An entering freshman who has never attended any college. Includes students enrolled in the fall term who attended college for the first time in the prior summer term. Also includes students who entered with advanced standing (college credits earned before graduation from high school).

Full-time (FT) - For undergraduate students, enrollment of 12 or more semester credit hours during fall/spring; for graduate students, enrollment of 9 or more semester credit hours.

Full-time Equivalent - Denoted as FTE. See *Faculty FTE (FTFE)* or *Student FTE (FTSE)* for definitions and formulas.

Graduate Student - A student who holds a bachelor's or first-professional degree, or equivalent, and is taking courses at the postbaccalaureate level. These students may or may not be enrolled in graduate programs.

Graduation Rate - Reported as a percentage, the portion of students in a cohort who graduate within certain periods of time such as after 3 years, after 4 years, after 5 years, etc.

Hispanic - Hispanic, non-white or non-black ethnic category including Mexican, Mexican-American, Chicano, Cuban, and Puerto Rican. It also includes Central or South American or other Spanish culture or origin, regardless of race (self-reported).

International - Ethnic category which includes persons who are not citizens of the United States and who are in this country on a temporary basis and do not have the right to remain indefinitely.

Junior - An undergraduate student who has completed 60-89 semester hours.

Level - The categorization of student classifications into one of two groups — undergraduate (includes freshmen, sophomores, juniors, and seniors), or graduate (includes post-baccalaureates and masters). The two categorizations of degree programs include baccalaureate and master's.

Master's - A graduate student possessing a baccalaureate degree or the equivalent and who is admitted to an approved master's degree program.

New GRAD - Graduate students newly admitted into a specific graduate degree program.

New UG Transfer - Undergraduate students entering the reporting institution for the first time but known to have previously attended a postsecondary institution at the same level and completed 12 or more semester credit hours.

Non-degree-seeking Student - A student enrolled in courses for credit and not recognized by the institution as seeking a degree or formal award.

Non-resident Aliens - Internationals or those persons who are not citizens or nationals of the United States and are in this country on a visa or temporary basis and do not have the right to remain indefinitely.

Official Reporting Date - The date on which an institution must report enrollment data to the state. Texas institutions report to the Texas Higher Education Coordinating Board (THECB).

Other - Ethnic category which includes all persons not defined as International and not included in any of the other five specific ethnic categories.

Part-time (PT) - For undergraduate students, enrollment of less than 12 semester credit hours during fall/spring; for graduate students, enrollment of less than 9 semester credit hours.

Persistence Rate - See retention rate.

Post-baccalaureate - A student possessing a baccalaureate degree but who has not been admitted to a graduate program.

Resident Aliens - Non-United States citizens who have been lawfully admitted for permanent residence and are reported in the appropriate racial/ethnic categories along with United States citizens.

Retention (Persistence) Rate - Reported as a percentage, the portion of students in a fall cohort who re-enroll in the fall of the following year until completion or graduation from an institution.

Semester Credit Hour (SCH) - A unit of measure representing an hour (50 minutes) of instruction over a 15-week period in a semester or trimester system or a 10-week period in a quarter system.

Senior - An undergraduate student who has completed 90 or more semester hours but who has not graduated.

Sophomore - An undergraduate student who has completed 30-59 semester hours.

State of Residence - A person's permanent address as determined by such evidence as a driver's license or voter registration. For entering freshmen, residence may be the legal residence of a parent or guardian.

Student/Faculty Ratio - Student FTE (FTSE) divided by faculty FTE (FTFE): FTSE/FTFE.

Student FTE (FTSE) - The student full-time equivalent is used to determine a standard enrollment if all students were enrolled full-time and is calculated by dividing the student semester credit hours (SCH) by the appropriate full-time hours. The Texas Higher Education Coordinating Board considers a full-time load as 15 hours for undergraduate (UG) students and 12 hours for graduate (GR) students. The resulting FTSE formula is ((UG SCH/15) + (GR SCH/12)).

THECB, Texas Higher Education Coordinating Board - The state governing board for public higher education in Texas.

Transfer - A student entering the reporting institution for the first time but known to have previously attended a postsecondary institution at the same level and completed 12 or more semester credit hours.

UGL (Undergraduate Lower) - Used in reference to freshmen- and sophomore-level courses when calculating semester credit-hour production.

UGU (Undergraduate Upper) - Used in reference to junior- and senior-level courses when calculating semester credit -hour production.

Undergraduate Student - A student enrolled in a bachelor's degree program, an associate's degree program, or a vocational or technical program below the baccalaureate.

Unduplicated Count - The sum of students enrolled for credit, with each student counted only once during the reporting period.

White - Non-Hispanic, white ethnic category including persons having origins in any of the original people of Europe, North Africa, or the Middle East except those of Hispanic origin (self-reported).

Contact Information

UNTD Office of Institutional Effectiveness

The Office of Institutional Effectiveness supports the Mission of the University of North Texas at Dallas by fostering the development of an institutional culture of continuous quality improvement.

Contacts:

Horace "H.D." Stearman, Ph.D
Associate Provost for Institutional Effectiveness
(972) 780-3614
hd.stearman@untdallas.edu

Cathi Chambers
Director of Institutional Research and Planning
(972) 780-3038
cathi.chambers@untdallas.edu

Nick Viator
Director of Assessment
(972) 338-1071
nicholas.viator@untdallas.edu

Websites:

Institutional Effectiveness: <http://untdallas.edu/ie>

Institutional Research and Planning: <http://untdallas.edu/ir>



UNT | DALLAS
UNIVERSITY OF NORTH TEXAS AT DALLAS

Find your horizon.

untdallas.edu