

NORTH TEXAS BASKETBALL

18 CONFERENCE CHAMPIONSHIPS • 1988, 2007, 2010 NCAA TOURNAMENT

Stephen Howard • Asst. Director Communications • Office: 940.369.8548 • Cell: 817.793.5199 • stephen.howard@unt.edu

2013-14 SCHEDULE

NOVEMBER

| | | |
|----|---------------------------|---------------|
| 8 | Northwood | W 72-67 |
| 11 | at Oklahoma # (SSN, FSOK) | L 95-82 |
| 14 | Nicholls State | W 92-78 |
| 21 | vs. Columbia \$ | L 70-66 |
| 22 | vs. Idaho \$ | L 87-76 |
| 23 | at Portland \$ | W 77-72 (2OT) |
| 26 | Incarnate Word | W 84-67 |
| 30 | Southeastern Louisiana | W 75-61 |

DECEMBER

| | | |
|----|------------------------|-----------|
| 3 | at BYU (BYUtv) | L 97-67 |
| 15 | Stephen F. Austin | L 87-53 |
| 17 | Central Arkansas (TWC) | W 64-55 |
| 21 | Wayland Baptist | W 81-77 |
| 31 | at Texas A&M (FSN) | 4:30 p.m. |

JANUARY

| | | |
|----|----------------------|--------|
| 4 | UC Riverside | 2 p.m. |
| 9 | Southern Miss * | 7 p.m. |
| 11 | Tulane * (CSS) | 1 p.m. |
| 16 | at Marshall * (TWC) | 6 p.m. |
| 18 | at Charlotte * (TWC) | 6 p.m. |
| 23 | UAB * | 7 p.m. |
| 25 | Middle Tennessee * | 7 p.m. |

FEBRUARY

| | | |
|----|-----------------------|--------|
| 1 | at Tulsa * | 3 p.m. |
| 6 | at Rice * | 7 p.m. |
| 8 | at Louisiana Tech * | 6 p.m. |
| 13 | Old Dominion * | 7 p.m. |
| 15 | East Carolina * | 7 p.m. |
| 20 | at FIU * | 6 p.m. |
| 22 | at Florida Atlantic * | 6 p.m. |
| 27 | at UTSA * | 7 p.m. |

MARCH

| | | |
|---|--------------|--------|
| 2 | UTEP * (TWC) | 2 p.m. |
| 6 | Tulsa * | 7 p.m. |

12-15 Conference USA Tournament %

Coaches vs. Cancer Classic (Norman, Okla.)

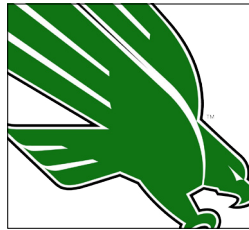
\$ Coaches vs. Cancer Classic (Portland, Ore.)

* Conference USA league game

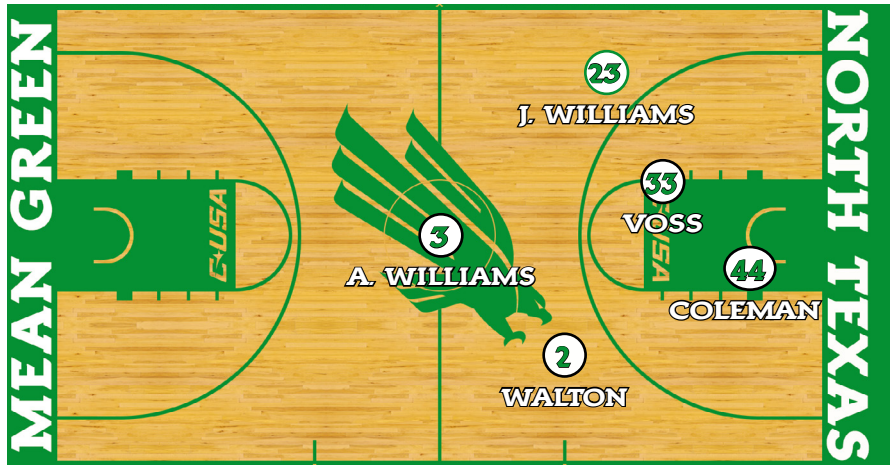
% C-USA Tournament (El Paso, Texas)

All times Central

GAME 13 - TEXAS A&M AGGIES



North Texas (7-5) at Texas A&M (8-3)
 Tuesday, Dec. 31, 2013 • 4:30 p.m.
 College Station, Texas • Reed Arena (12,989)
 Radio: MGRN - 88.1 KNTU-FM, 95.3 KHYI-FM
 Michael Westbrook (PBP)
 TV: Fox Sports Southwest
 RealTime RPI: NT - 212, Texas A&M - 167
 Series: TAMU leads 10-8 • Last: TAMU 75-65, 12/7/09



NORTH TEXAS PROBABLE STARTERS

| No. | Pos | Name | Ht | Wt | Class | Hometown | Pts/Reb/Other |
|-----|-----|-----------------|------|-----|-------|---------------------|----------------------|
| 3 | G | Alzee Williams | 6-4 | 182 | Sr. | Dallas | 14.8 / 3.9 / 1.2 APG |
| 2 | G | Brandan Walton | 6-2 | 205 | Sr. | Compton, Calif. | 5.6 / 2.6 / 1.1 SPG |
| 23 | G | Jordan Williams | 6-6 | 202 | Jr. | Dallas | 11.6 / 6.6 / 1.2 SPG |
| 33 | F | Colin Voss | 6-7 | 240 | Jr. | Grand Rapids, Mich. | 5.5 / 5.9 / 46.3 FG% |
| 44 | F | Keith Coleman | 6-10 | 250 | Jr. | Philadelphia | 5.5 / 5.2 / 1.5 BPG |

RESERVES

| No. | Pos | Name | Ht | Wt | Class | Hometown | Pts/Reb/Other |
|-----|-----|------------------|------|-----|-------|------------------|-----------------------|
| 0 | G | Vertrail Vaughns | 6-2 | 194 | Sr. | Mesquite, Texas | 8.5 / 1.8 / 1.5 APG |
| 1 | G/F | Maurice Aniefiok | 6-5 | 212 | So. | Lagos, Nigeria | 6.3 / 4.3 / 46.4 3FG% |
| 4 | F | Armani Flannigan | 6-8 | 200 | Jr. | Rockford, Ill. | 3.3 / 2.5 / 1.3 BPG |
| 5 | G | Chris Jones | 6-2 | 203 | Jr. | Garland, Texas | 9.1 / 4.5 / 3.7 APG |
| 10 | G | Austin Mitchell | 6-1 | 180 | So. | Plano, Texas | - |
| 21 | G | T.J. Taylor | 6-3 | 215 | Jr. | Denison, Texas | 8.2 / 2.2 / 50.0 FG% |
| 22 | G | Greg Wesley | 6-7 | 190 | Fr. | Arlington, Texas | - |
| 24 | F/C | Kelvin Gaines | 6-10 | 240 | Jr. | Ocala, Fla. | 0.0 / 1.0 / 0-2 FG |

COACHING STAFF

- Head Coach: Tony Benford
 2nd year at NT (19-25 Record)
 Overall (Same)
- Associate Head Coach: Rob Evans
- Asst. Coaches: David Anwar,
 Scott Monarch
- Director of Operations: Jeff Luster
- Strength Coach: Chris Seroka

MEAN GREEN

AGGIES

| | | |
|-----------|---------------------|-------|
| 74.1..... | PPG..... | 72.8 |
| -2.0..... | Margin..... | +10.9 |
| 41.5..... | FG%..... | 47.1 |
| 32.0..... | 3PT%..... | 31.0 |
| 66.8..... | FT%..... | 68.1 |
| +2.0..... | Rebound Margin..... | +2.2 |
| 9.3..... | Asst. Avg..... | 13.6 |
| 13.3..... | TO Avg..... | 12.3 |
| 6.3..... | Steals Avg..... | 6.6 |
| 3.8..... | Blocks Avg..... | 5.6 |

INSIDE THE MATCHUP

• The North Texas & Texas A&M Series.

Overall Series: TAMU leads 10-8
 Streak: TAMU won last three
 Last Meeting: NT 65 at TAMU 75, 12/7/09
 Last NT win: 91-88 on 12/29/99 in Denton
 Last NT win at TAMU: 72-65, 12/15/66
 In College Station: TAMU leads 8-3
 In Denton: NT leads 3-1

• In the last meeting, the No. 16 ranked Aggies took a 75-65 decision over NT on Dec. 7, 2009. Donald Sloan led all scorers with 21 points on 10-of-10 shooting from the free throw line for a Texas A&M squad that shot 50 percent for the game. Eric Tramiel countered with 17 points on 6-of-11 shooting for NT, while George Odufuwa just missed a double-double with 12 points and nine rebounds. The Aggies led by as much as 19 in the first half, but NT forced TAMU to 31.8 percent shooting in the second half. Both teams would advance to the NCAA Tournament later that year.

• The Aggies are holding their opponents to 37.2 percent from the floor and 61.9 points per game this year, which ranks 7th and 22nd, respectively, in the NCAA. Texas A&M excels in paint defense, and ranks 37th in the country with 5.6 blocks per game.

• Texas A&M is 8-0 at home this year, and has yet to leave Texas. In fact, the Aggies' three neutral-court games totaled less than 700 miles round trip. NT, on the other hand, has made trips to Portland, Ore. and Provo, Utah, and will cross the 7,000 mile mark on the way home from College Station.

• The Aggies and NT have one common opponent in Oklahoma. The Aggies fell to the Sooners, 64-52, at the Toyota Center in Houston on Dec. 21, while OU dropped NT, 95-82, in Norman on Nov. 11. For NT, Keith Coleman had his first career double-double against OU with 14 points and 10 boards, but the Sooners used 52.9 percent shooting and a blistering transition game to get the win.

MEAN GREEN QUICK FACTS

Location: Denton, Texas
 Founded: 1890
 Enrollment: 36,221
 Nickname: Mean Green
 Colors: Green and White
 Home Arena: The Super Pit (10,500)
 Affiliation: NCAA Division I
 Conference: Conference USA
 Program All-Time Record: 1,082-1,219-1
 Program founded: 1916-17 (96th season)

INDIVIDUAL QUICK HITTERS (FULL BIOS ON MEANGREENSPORTS.COM)

- 0 VERTRAIL VAUGHNS** 118 Division I games are 16th most among active Div. I ... 40% of shots are from 3-pt ... 2nd at NT with 17 assists (high of 5 vs. OU) ... 716 career points ... George Mason: Career 38.5% from 3-point.
- 1 MAURICE ANIEFIOK** Ranks 4th in C-USA with a 46.4 3FG% (13-of-28) ... 3-of-5 from deep at BYU ... 21 points, 10 rebounds (both career highs) vs. Nicholls St. ... Saw 30 games of action for 'Ole Miss as a frosh (1.4 PPG).
- 2 BRANDAN WALTON** 64 career 3-ptrs on 33.9% ... 13 steals ranks 3rd at NT ... Career-high in rebs (8), steals (4) in opener ... Redshirted '12-13 after foot injury 1 min into opener at Creighton ... Hit 54 3-pointers in 11-12.
- 3 ALZEE WILLIAMS** Slasher, NT's leading scorer (14.8 PPG) ... 24 pts vs Wayland (3rd 20-pt game) ... 104 career games at NT (64 starts) ... Only player to start every game of '13-14 ... 2,619 career mins, 886 career points.
- 4 ARMANI FLANNIGAN** 10th in C-USA with 1.25 BPG despite team-low 11.8 MPG ... 4 multi-block games ... NT's Dunk Contest winner ... Central Wyoming: 2nd team All-Region IX ... 56.4 FG% ranked 67th in NJCAA.
- 5 CHRIS JONES** 10th in C-USA with 3.73 APG, 1.71 A/TO ratio ... 196 career assists only 38 shy of Dominique Johnson (234, 2009-11) for 10th in NT history ... 2nd career double-double at Portland (12 pts, 10 reb).
- 10 AUSTIN MITCHELL** Expected to REDSHIRT 2013-14 ... Averaged 0.9 MPG over 19 contests for NT ... Tallied a rebound in 3 games, including the season opener ... Posted a steal in the NIT Season Tip-Off game vs Lamar.
- 21 T.J. TAYLOR** 42.1 3-point percentage ranks 2nd at NT ... Exploded for 24 & 21 point games in Portland ... 12 points in OTs vs. Pilots ... Attended Marquette ... 3rd-Team NJCAA All-American at Paris JC.
- 22 GREG WESLEY** Awaiting NCAA eligibility ruling ... TexasHoops.com No. 9 player in state ... Powered Seguin HS to 33-5 record ... 13.0 PPG, 6.0 RPG as a senior ... MVP of Showboat Classic all-star game with 34 points.
- 23 JORDAN WILLIAMS** NT's top "all-around" player ... 799 career points, 45 starts ... Leads NT with 6.6 RPG (19th in C-USA) ... First career double-double vs. SLU ... Season-high 19 pts vs UIW ... C-USA "Player to Watch".
- 24 KELVIN GAINES** 1st appearance vs. SFA (3 mins) ... Played 39 games over last 2 years for Cinci ... Bachelor's degree from Cinci ... 39 career blocks ... Ranked 3rd at Cinci in 11-12 with 23 blocks ... Intl' experience.
- 33 COLIN VOSS** Back-to-back double-doubles ... 2nd at NT with 5.9 RPG ... Team season-high 12 rebounds vs. SLU ... 2nd-team NJCAA All-American at Northern Okla. ... Dad coached him to HS state football title.
- 44 KEITH COLEMAN** 16 blocks (1.45 BPG) rank 8th in C-USA ... At least 1 block in 9 of 11 games ... Took just 7 games to pass scoring total from all of '12-13 ... 1st double-double at OU (14 pts, 10 reb) ... "Offseason MVP".

NORTH TEXAS' RECORD WHEN ...

| | | | |
|------------------------------|-----|---------------------------------------|-------|
| Overall | 7-5 | Opponent Scores: | |
| Home..... | 6-1 | 59 and under | 1-0 |
| Road..... | 1-2 | 60-69 | 3-0 |
| Neutral..... | 0-2 | 70-79 | 3-1 |
| Leading at half..... | 6-0 | 80-89 | 0-2 |
| Trailing/Tied at half..... | 1-5 | 90-Plus..... | 0-2 |
| Outshoots Opponent..... | 6-0 | Shoots: | |
| Outshot by Opponent..... | 1-5 | Under 35%..... | 0-1 |
| More rebounds | 6-1 | 35-39%..... | 2-2 |
| Less or equal Rebounds | 1-4 | 40-44%..... | 3-2 |
| More turnovers..... | 3-2 | 45-49%..... | 2-0 |
| Less or equal turnovers..... | 4-3 | 50%+ | 0-0 |
| Scores: | | Opponent Shoots: | |
| 59 and under | 0-1 | Under 35%..... | 3-0 |
| 60-69 | 1-2 | 35-39%..... | 2-0 |
| 70-79 | 3-1 | 40-44%..... | 2-0 |
| 80-89 | 2-1 | 45-49%..... | 0-3 |
| 90-Plus..... | 1-0 | 50%+ | 0-2 |
| | | Misc. | |
| | | With Chris Seroka (since 08-09) | 94-62 |

HEAD COACH TONY BENFORD



PERSONAL

- **Birthdate**
March 22, 1964
- **Hometown**
Hobbs, N.M.
- **Alma Mater**
Texas Tech, '92
- **Spouse**
Deborah
- **Children**
Audriana, Milena, Tony Jr., Jeremy

COACHING

- **North Texas**
Head Coach (2012-Pr)
- **Marquette**
Assoc. Head Coach (2011-12)
Asst. Coach (2008-11)
- **Nebraska**
Asst. Coach (2006-08)
- **UTEP**
Asst. Coach (July 2006)
- **Arizona State**
Assoc. Head Coach (2004-06)
Asst. Coach (1998-04)
- **New Mexico**
Asst. Coach (1992-98)
- **All Saints School**
Head Coach (1988-1991)

PLAYING CAREER

- **European League**
Holland (1986-87)
- **Chicago Bulls**
Training Camp (1986)
- **Boston Celtics**
Fourth Round Draft Pick (1986)
- **Texas Tech**
All-SWC (1986)
- SWC Tournament MVP (1986)
- **Hobbs High School**
1982 N.M. State MVP
1982 State Champion

TEAM QUICK HITTERS

Quick Hitters

- NT is 7-0 this year when holding their opponent under 45 percent shooting.
- NT was 0-of-9 from 3-point against WBU, which marks just the fourth time NT has been held scoreless from deep since the inception of the 3-pointer in 1986 (all four games since 2010-11 season).
- Armani Flannigan ranks 10th in C-USA with 1.25 blocks per game despite just 11.8 minutes per game. Flannigan is the only C-USA player in the top 10 in blocks averaging less than 20 minutes per contest.

Voss Is The Boss - Colin Voss, who has posted back-to-back double-doubles, has returned to full strength after a deep thigh contusion sustained early in Oct. held him out nearly a month. The junior has played in every game, but didn't feel 100-percent until mid Dec. Voss has posted the top two rebounding efforts by an NT player this year (12 vs. SLU, 11 vs. UCA), and was the fifth NT player to record a double-double in 2013-14 - the most by any C-USA team.

Colin Voss' Last Two Games

| Opp | Pts | Reb | FG (%) |
|--------|-----------|-----------|--------------|
| UCA | 13 | 11 | 3-3 (100) |
| WBU | 18 | 10 | 9-14 (64.3) |
| Totals | 31 (15.5) | 21 (10.5) | 12-17 (70.6) |

Approaching 20 Wins - At 19 career wins in 44 games, Tony Benford can still be among the fastest NT coaches to reach the 20-victory plateau. Of NT's 17 head coaches, only six reached 20 wins in fewer than 40 games.

Fastest NT Coaches To 20 Wins (Since WWII)

| Coach | Games |
|---------------|-------|
| Bill Blakeley | 24 |
| Tim Jankovich | 39 |
| Johnny Jones | 39 |
| Jimmy Gales | 49 |

Getting To The Line - The new hand-check rules play right into NT's game plan of driving the lane and getting to the free throw line. NT ranks 27th in the nation in both free throws made per game (18.8) and free throws attempted per game (28.1). Only five players in C-USA have made more free throws than Alzee Williams (62 makes). As a team, NT led the nation in free throws made per game in 2008-09 (20.3) and 2009-10 (20.1).

Welcome To Conference USA! - After 13 seasons in the Sun Belt Conference, North Texas is making the jump to Conference USA. C-USA, which is based locally in Irving, features attractive television packages,

elevated competition and a host of regional rivalries. C-USA features four schools within 350 miles of Denton, as well as three in-state rivals in UTEP, Rice and UTSA.

New League, Same Results - North Texas has plenty of reasons to be confident about the move to Conference USA. Over the last 10 seasons, the Mean Green is 26-15 (63.4 percent) against its future C-USA rivals, including a perfect combined 6-0 mark against Rice, Tulsa and Charlotte.

Man On A Mission - Tony Mitchell was selected with the 37th overall pick (2nd Round, 7th Pick) by the Detroit Pistons, which made him the highest NBA Draft pick in North Texas history. Mitchell rewrote NT's shot-blocking records with 157 blocks in just 55 games (2.8 per game) and was a unanimous preseason All-American prior to the 2012-13 season.

Banged Up - Only two teams in the country experienced more injuries in 2012-13 than North Texas. NT players combined to miss 82 collective games due to injury, which trailed only IUPUI and Utah State. NT lost Brandan Walton for the year just one minute into the season opener, and four additional players missed significant time with injuries. North Texas played with just seven scholarship players in multiple games last season.

19 More Years Of Hoops Experience - College graduates Vertrail Vaughns (George mason) and Kelvin Gaines (Cincinnati) aren't the only new veterans who will suite up for NT. When you add in senior Brandan Walton (missed 2012-13 to injury), T.J. Taylor (Marquette, Paris JC, Oklahoma), Armani Flannigan (Central Wyoming State), Maurice Aniefiok ('Ole Miss) and Collin Voss (Northern Oklahoma, Central Michigan) the Mean Green added 19 years of collegiate experience (including redshirt seasons) to its roster for 2013-14.

Hard Place To Play - These offseason facilities upgrades will only help enhance the game-day experience for North Texas fans at the Super Pit, a place that the Mean Green has been nearly unbeatable. NT is 88-25 (77.9 percent) at the Super Pit since 2006-07.

Winning Ways - The Mean Green has averaged 20 wins per year over the last seven seasons, including five straight 20-win seasons from 2007-11. NT won the 2007 and 2010 Sun Belt titles, and played in the NCAA Tournament in both of those seasons.

THE LAST TIME A MEAN GREEN PLAYER ...

Had 30 or more points

31 - Jordan Williams vs. Louisiana-Lafayette, 1/31/13

Had 15 or more rebounds

15 - Tony Mitchell vs. Troy, 1/3/13

Had 10 or more assists

10 - Chris Jones vs. Troy, 12/31/11

Had 5 or more blocks

5 - Tony Mitchell vs. ULM, 2/14/13

Had 5 or more steals

5 - P.J. Hardwick vs. South Alabama, 2/23/13

Made 90% or more FGA (min 5 att)

1.000 - George Odufuwa vs. UALR (7-7), 2/20/10

Made 80% or more FGA (min 5 att)

.818 - T.J. Taylor vs. Idaho (9-11), 11/22/13

Made 100% FTA (min 5 att)

1.000 - Jordan Williams vs. SLU (6-6), 11/30/13

1.000 - Chris Jones vs. SLU (5-5), 11/30/13

Made 90% or more FTA (min 5 att)

.900 - Alzee Williams vs. UALR (9-10), 2/23/12

Made 8 or more 3PT's

8 - Joe Ervin vs. Arkansas, 12/30/98

Had a double-double (pts/rbs)

Colin Voss (18 pts / 10 reb) vs. Wayland Baptist, 12/21/13

Had consecutive double-doubles (pts/rbs)

Colin Voss vs. Central Arkansas, 12/17/13, vs. Wayland Baptist, 12/21/13

Had a double-double (pts/asst)

Chris Jones vs. Troy (21 pts / 10 asst), 12/31/11

Had a triple-double (pts/rbs/asst)

Jesse Ratliff vs. Sam Houston St. (20pts/16reb/10asst), 2/18/93

Had a perfect shooting night (min 5 fg & ft att)

Tristan Thompson vs. Sam Houston St. (6-6 fg/2-2 3fg/6-6 ft), 12/3/08

THE LAST TIME A MEAN GREEN TEAM ...

Scored 100 or more points

107 - vs. Houston Baptist, 2/15/10

Allowed 100 or more points

105 - vs. Louisiana-Lafayette, 1/31/13

Scored 50 or fewer points

45 - vs. Southeastern Louisiana, 12/16/12

Held an opponent under 50 points

47 - vs. New Orleans, 12/27/11

Won an overtime game

77-72 (2OT) - at Portland, 11/23/13

Had 50 or more rebounds

57 - vs. Northwood, 11/8/12

Had 20 or more assists

22 - vs. Western Kentucky, 1/12/12

Had 10 or more steals

11 - vs. Columbia, 11/21/13

Had 5 or more blocks

5 - vs. BYU, 12/3/13

Five or more players in double-figures

7 - vs. FIU, 2/9/13

Made 60% or higher FGs

.750 - vs. FIU (24-32), 2/9/13

Made 50% or higher 3pt FGs

.500 - at Portland (8-16), 11/23/13

Made 90% or higher FTs

.938 - vs. St. Louis (15-of-16), 12/6/12

NORTH TEXAS STARTING LINEUPS

| Opponent | 1 | 2 | 3 | 4 | 5 |
|-----------------------|------------------|------------------|------------------|----------------|---------|
| Northwood..... | Jones..... | A. Williams..... | J. Williams..... | Flannigan..... | Coleman |
| Oklahoma..... | A. Williams..... | Vaughns..... | Walton..... | Voss..... | Coleman |
| Nicholls State..... | A. Williams..... | Vaughns..... | Walton..... | Flannigan..... | Coleman |
| Columbia..... | Jones..... | A. Williams..... | Walton..... | Voss..... | Coleman |
| Idaho..... | Jones..... | Vaughns..... | A. Williams..... | Voss..... | Coleman |
| Portland..... | Jones..... | A. Williams..... | Walton..... | Voss..... | Coleman |
| Incarnate Word..... | Jones..... | A. Williams..... | Walton..... | Voss..... | Coleman |
| SLU..... | Jones..... | Vaughns..... | A. Williams..... | Voss..... | Coleman |
| BYU..... | Jones..... | Vaughns..... | A. Williams..... | Voss..... | Coleman |
| SFA..... | Jones..... | A. Williams..... | J. Williams..... | Aniefiok..... | Voss |
| Central Ark..... | A. Williams..... | Walton..... | J. Williams..... | Voss..... | Coleman |
| Wayland Baptist..... | A. Williams..... | Walton..... | J. Williams..... | Voss..... | Coleman |
| Texas A&M..... | | | | | |
| UC Riverside..... | | | | | |
| Southern Miss..... | | | | | |
| Tulane..... | | | | | |
| Marshall..... | | | | | |
| Charlotte..... | | | | | |
| UAB..... | | | | | |
| MTSU..... | | | | | |
| Tulsa..... | | | | | |
| Rice..... | | | | | |
| Louisiana Tech..... | | | | | |
| Old Dominion..... | | | | | |
| East Carolina..... | | | | | |
| FIU..... | | | | | |
| Florida Atlantic..... | | | | | |
| UTSA..... | | | | | |
| Tulsa..... | | | | | |

NORTH TEXAS INDIVIDUAL SUPERLATIVES

Double-Doubles (6)

Colin Voss 2 WBU (18 pts, 10 reb), UCA (13 pts, 11 reb)
 Keith Coleman 1 at OU (14 pts, 10 reb)
 Maurice Aniefiok.... 1 Nicholls St. (21 pts, 10 reb)
 Chris Jones 1 at Portland (12 pts, 10 reb)
 Jordan Williams..... 1 SLU (15 pts, 10 reb)

20-Plus Point Games (6)

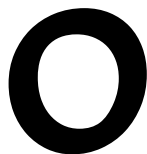
Alzee Williams..... 3 WBU (24), at OU (24), Northwood (22)
 T.J. Taylor..... 2 at Portland (21), vs. Idaho (24)
 Maurice Aniefiok.... 1 Nicholls St. (21)

Double-Digit Rebound Games (8)

Colin Voss 3 WBU (10), Central Ark. (11), SLU (12)
 Jordan Williams..... 2 SLU (10), Northwood (10)
 Maurice Aniefiok.... 1 Nicholls St. (10)
 Chris Jones 1 at Portland (10)
 Keith Coleman..... 1 at OU (10)

NT SEASON/CAREER GAMES PLAYED/STARTED

| Player | 2013-14 Season | | Career | |
|-------------|----------------|----------|-------------|------------|
| | Games | Starts | Games | Starts |
| A. Williams | 12 (7-5) | 12 (7-5) | 104 (59-45) | 64 (33-31) |
| J. Williams | 12 (7-5) | 4 (3-1) | 63 (30-33) | 45 (19-26) |
| Jones | 11 (6-5) | 8 (4-4) | 46 (23-23) | 41 (20-21) |
| Walton | 12 (7-5) | 7 (5-2) | 44 (25-20) | 24 (16-8) |
| Coleman | 11 (7-4) | 11 (7-4) | 41 (17-24) | 12 (8-4) |
| Voss | 12 (7-5) | 10 (5-5) | - | - |
| Flannigan | 12 (7-5) | 2 (2-0) | - | - |
| Vaughns | 11 (6-5) | 5 (2-3) | - | - |
| Aniefiok | 10 (6-4) | 1 (0-1) | - | - |
| Taylor | 10 (6-4) | - | - | - |
| Gaines | 1 (0-1) | - | - | - |



VERTRAIL VAUGHNS

Sr. ▶ G ▶ 6-2 ▶ 194
Mesquite, TX ▶
(George Mason)



↳ CAREER HIGHS

Points: 18, vs Columbia -- 11/21/13
Rebounds: 4, vs Idaho -- 11/22/13
Assists: 5, at Oklahoma -- 11/11/13
Steals: 2, Stephen F. Austin -- 12/15/13
Blocks: 1, Southeastern La. -- 11/30/13
FG made: 5, vs Columbia -- 11/21/13
FG attempts: 14, at BYU -- 12/03/13
3FG made: 4, vs Columbia -- 11/21/13
3FG attempts: 6, vs Columbia -- 11/21/13
FT made: 8, Nicholls State -- 11/14/13
FT attempts: 10, Nicholls State -- 11/14/13

↳ 2013-14 STATS

| Opponent | Date | qs | min | Total | | 3-Pointers | | Free throws | | Rebounds | | | | pf | a | t/o | blk | stl | pts | avg |
|-------------------|----------|----|-----|--------|-------|------------|-------|-------------|-------|----------|-----|-----|-----|----|----|-----|-----|-----|-----|------|
| | | | | fg-fga | pct | 3fg-fga | pct | ft-fta | pct | off | def | tot | avg | | | | | | | |
| NORTHWOOD | 11/8/13 | | 16 | 1-6 | .167 | 1-3 | .333 | 1-2 | .500 | 1 | 2 | 3 | 3.0 | 2 | 2 | 1 | 0 | 0 | 4 | 4.0 |
| at Oklahoma | 11/11/13 | * | 23 | 0-4 | .000 | 0-1 | .000 | 2-2 | 1.000 | 0 | 1 | 1 | 2.0 | 1 | 5 | 2 | 0 | 1 | 2 | 3.0 |
| NICHOLLS STATE | 11/14/13 | * | 22 | 4-4 | 1.000 | 1-1 | 1.000 | 8-10 | .800 | 0 | 1 | 1 | 1.7 | 2 | 1 | 1 | 0 | 1 | 17 | 7.7 |
| vs Columbia | 11/21/13 | | 20 | 5-11 | .455 | 4-6 | .667 | 4-5 | .800 | 0 | 1 | 1 | 1.5 | 3 | 0 | 1 | 0 | 1 | 18 | 10.3 |
| vs Idaho | 11/22/13 | * | 23 | 3-9 | .333 | 0-4 | .000 | 2-4 | .500 | 0 | 4 | 4 | 2.0 | 4 | 1 | 2 | 0 | 1 | 8 | 9.8 |
| INCARNATE WORD | 11/26/13 | | 19 | 2-6 | .333 | 1-3 | .333 | 6-6 | 1.000 | 0 | 1 | 1 | 1.8 | 3 | 1 | 0 | 0 | 0 | 11 | 10.0 |
| SOUTHEASTERN LA. | 11/30/13 | * | 17 | 2-5 | .400 | 0-1 | .000 | 0-0 | .000 | 0 | 1 | 1 | 1.7 | 3 | 1 | 2 | 1 | 0 | 4 | 9.1 |
| at BYU | 12/03/13 | * | 24 | 4-14 | .286 | 1-5 | .200 | 0-0 | .000 | 0 | 3 | 3 | 1.9 | 2 | 3 | 2 | 0 | 1 | 9 | 9.1 |
| STEPHEN F. AUSTIN | 12/15/13 | | 23 | 2-5 | .400 | 1-3 | .333 | 6-7 | .857 | 0 | 1 | 1 | 1.8 | 3 | 0 | 2 | 0 | 2 | 11 | 9.3 |
| CENTRAL ARKANSAS | 12/17/13 | | 19 | 0-6 | .000 | 0-2 | .000 | 4-4 | 1.000 | 2 | 1 | 3 | 1.9 | 0 | 3 | 5 | 0 | 1 | 4 | 8.8 |
| WAYLAND BAPTIST | 12/21/13 | | 20 | 2-5 | .400 | 0-1 | .000 | 1-2 | .500 | 0 | 1 | 1 | 1.8 | 2 | 0 | 0 | 0 | 0 | 5 | 8.5 |
| Totals | | 5 | 226 | 25-75 | .333 | 9-30 | .300 | 34-42 | .810 | 3 | 17 | 20 | 1.8 | 25 | 17 | 18 | 1 | 8 | 93 | 8.5 |

Games played: 11
Minutes/game: 20.5
Points/game: 8.5
FG Pct: 33.3
3FG Pct: 30.0
FT Pct: 81.0

Rebounds/game: 1.8
Assists/game: 1.5
Turnovers/game: 1.6
Assist/turnover ratio: 0.9
Steals/game: 0.7
Blocks/game: 0.1

↳ CAREER STATS

| Season | gp-gs | min/avg | Total | | 3-Point | | F-Throws | | Rebounds | | | | Scoring | | | | | | | |
|---------|-------|----------|--------|------|---------|------|----------|------|----------|-----|-----|-----|---------|----|-----|----|-----|-----|-----|-----|
| | | | fg-fga | pct | fg-fga | pct | ft-fta | pct | off | def | tot | avg | pf | fo | ast | to | blk | stl | pts | avg |
| 2013-14 | 11-5 | 226/20.5 | 25-75 | .333 | 9-30 | .300 | 34-42 | .810 | 3 | 17 | 20 | 1.8 | 25 | 0 | 17 | 18 | 1 | 8 | 93 | 8.5 |
| TOTAL | 11-5 | 226/20.5 | 25-75 | .333 | 9-30 | .300 | 34-42 | .810 | 3 | 17 | 20 | 1.8 | 25 | 0 | 17 | 18 | 1 | 8 | 93 | 8.5 |

1

MAURICE ANIEFIOK

So. ▶ G/F ▶ 6-5 ▶ 212
Lagos, Nigeria ▶
(‘Ole Miss)



↳ **CAREER HIGHS**

Points: 21, Nicholls State -- 11/14/13
Rebounds: 10, Nicholls State -- 11/14/13
Assists: 2, at BYU -- 12/03/13
Steals: 1, at Portland -- 11/23/13; Incarnate Word -- 11/26/13
Blocks: 1, at BYU -- 12/03/13
FG made: 6, Nicholls State -- 11/14/13
FG attempts: 8, Nicholls State -- 11/14/13
3FG made: 3, Nicholls State -- 11/14/13; at Portland -- 11/23/13; at BYU
3FG attempts: 5, 4 times
FT made: 6, Nicholls State -- 11/14/13
FT attempts: 7, Nicholls State -- 11/14/13

↳ **2013-14 STATS**

| Opponent | Date | gs | min | Total | | 3-Pointers | | Free throws | | Rebounds | | | | pf | a | t/o | blk | stl | pts | avg |
|-------------------|----------|----|-----|--------|------|------------|-------|-------------|-------|----------|-----|-----|-----|----|---|-----|-----|-----|-----|-----|
| | | | | fg-fga | pct | 3fg-fga | pct | ft-fta | pct | off | def | tot | avg | | | | | | | |
| NORTHWOOD | 11/8/13 | | 25 | 1-6 | .167 | 1-5 | .200 | 2-2 | 1.000 | 0 | 6 | 6 | 6.0 | 4 | 1 | 0 | 0 | 0 | 5 | 5.0 |
| at Oklahoma | 11/11/13 | | 8 | 1-3 | .333 | 1-2 | .500 | 0-0 | .000 | 0 | 1 | 1 | 3.5 | 2 | 0 | 1 | 0 | 0 | 3 | 4.0 |
| NICHOLLS STATE | 11/14/13 | | 28 | 6-8 | .750 | 3-3 | 1.000 | 6-7 | .857 | 1 | 9 | 10 | 5.7 | 4 | 0 | 0 | 0 | 0 | 21 | 9.7 |
| vs Columbia | 11/21/13 | | 5 | 0-1 | .000 | 0-1 | .000 | 0-0 | .000 | 0 | 0 | 0 | 4.3 | 0 | 0 | 0 | 0 | 0 | 0 | 7.3 |
| at Portland | 11/23/13 | | 24 | 4-7 | .571 | 3-5 | .600 | 0-0 | .000 | 1 | 2 | 3 | 4.0 | 5 | 0 | 2 | 0 | 1 | 11 | 8.0 |
| INCARNATE WORD | 11/26/13 | | 11 | 1-2 | .500 | 1-1 | 1.000 | 0-0 | .000 | 1 | 3 | 4 | 4.0 | 2 | 0 | 0 | 0 | 1 | 3 | 7.2 |
| at BYU | 12/03/13 | | 11 | 4-7 | .571 | 3-5 | .600 | 0-0 | .000 | 0 | 6 | 6 | 4.3 | 4 | 2 | 1 | 1 | 0 | 11 | 7.7 |
| STEPHEN F. AUSTIN | 12/15/13 | * | 20 | 1-2 | .500 | 0-0 | .000 | 0-0 | .000 | 0 | 3 | 3 | 4.1 | 4 | 0 | 1 | 0 | 0 | 2 | 7.0 |
| CENTRAL ARKANSAS | 12/17/13 | | 27 | 1-5 | .200 | 1-5 | .200 | 3-4 | .750 | 1 | 8 | 9 | 4.7 | 3 | 0 | 0 | 0 | 0 | 6 | 6.9 |
| WAYLAND BAPTIST | 12/21/13 | | 15 | 0-2 | .000 | 0-1 | .000 | 1-2 | .500 | 0 | 1 | 1 | 4.3 | 3 | 1 | 1 | 0 | 0 | 1 | 6.3 |
| Totals | | 1 | 174 | 19-43 | .442 | 13-28 | .464 | 12-15 | .800 | 4 | 39 | 43 | 4.3 | 31 | 4 | 6 | 1 | 2 | 63 | 6.3 |

Games played: 10
Minutes/game: 17.4
Points/game: 6.3
FG Pct: 44.2
3FG Pct: 46.4
FT Pct: 80.0

Rebounds/game: 4.3
Assists/game: 0.4
Turnovers/game: 0.6
Assist/turnover ratio: 0.7
Steals/game: 0.2
Blocks/game: 0.1

↳ **CAREER STATS**

| Season | gp-gs | min/avg | Total | | 3-Point | | F-Throws | | Rebounds | | | | Scoring | | | | | | | |
|---------|-------|----------|--------|------|---------|------|----------|------|----------|-----|-----|-----|---------|----|-----|----|-----|-----|-----|-----|
| | | | fg-fga | pct | fg-fga | pct | ft-fta | pct | off | def | tot | avg | pf | fo | ast | to | blk | stl | pts | avg |
| 2013-14 | 10-1 | 174/17.4 | 19-43 | .442 | 13-28 | .464 | 12-15 | .800 | 4 | 39 | 43 | 4.3 | 31 | 1 | 4 | 6 | 1 | 2 | 63 | 6.3 |
| TOTAL | 10-1 | 174/17.4 | 19-43 | .442 | 13-28 | .464 | 12-15 | .800 | 4 | 39 | 43 | 4.3 | 31 | 1 | 4 | 6 | 1 | 2 | 63 | 6.3 |

2

BRANDAN WALTON

Sr. ▶ G ▶ 6-2 ▶ 205
Compton, CA ▶
(Casper College)



↳ CAREER HIGHS

Points: 19, Arkansas State -- 01/28/12
Rebounds: 8, Northwood -- 11/8/13
Assists: 4, at FIU -- 02/09/12
Steals: 4, Northwood -- 11/8/13
Blocks: 1, at South Alabama -- 01/05/12
FG made: 6, UALR -- 2/23/12
FG attempts: 16, at UALR -- 02/23/12
3FG made: 5, at ULM -- 01/14/12
3FG attempts: 10, at UALR -- 02/23/12
FT made: 6, Arkansas State -- 01/28/12
FT attempts: 6, Northwood -- 11/8/13; Stephen F. Austin -- 12/15/13

↳ 2013-14 STATS

| Opponent | Date | gs | min | Total | | 3-Pointers | | Free throws | | Rebounds | | | | pf | a | t/o | blk | stl | pts | avg | |
|-------------------|----------|----|-----|--------|-------|------------|-------|-------------|-------|----------|-----|-----|-----|-----|----|-----|-----|-----|-----|------|-----|
| | | | | fg-fga | pct | 3fg-fga | pct | ft-fa | pct | off | def | tot | avg | | | | | | | | |
| NORTHWOOD | 11/8/13 | | 22 | 4-12 | .333 | 1-5 | .200 | 4-6 | .667 | 4 | 4 | 8 | 8.0 | 2 | 0 | 3 | 0 | 4 | 13 | 13.0 | |
| at Oklahoma | 11/11/13 | * | 29 | 3-9 | .333 | 1-6 | .167 | 1-2 | .500 | 1 | 3 | 4 | 6.0 | 3 | 3 | 1 | 0 | 1 | 8 | 10.5 | |
| NICHOLLS STATE | 11/14/13 | * | 27 | 2-8 | .250 | 0-3 | .000 | 4-4 | 1.000 | 0 | 2 | 2 | 4.7 | 3 | 1 | 2 | 0 | 0 | 8 | 9.7 | |
| vs Columbia | 11/21/13 | * | 20 | 1-6 | .167 | 0-3 | .000 | 0-0 | .000 | 2 | 4 | 6 | 5.0 | 2 | 0 | 1 | 0 | 2 | 2 | 7.8 | |
| vs Idaho | 11/22/13 | | 18 | 0-2 | .000 | 0-1 | .000 | 0-2 | .000 | 0 | 1 | 1 | 4.2 | 4 | 0 | 0 | 0 | 0 | 0 | 6.2 | |
| at Portland | 11/23/13 | * | 20 | 1-4 | .250 | 1-4 | .250 | 0-0 | .000 | 0 | 0 | 0 | 3.5 | 4 | 0 | 1 | 0 | 1 | 3 | 5.7 | |
| INCARNATE WORD | 11/26/13 | * | 22 | 5-9 | .556 | 4-5 | .800 | 2-2 | 1.000 | 1 | 0 | 1 | 3.1 | 4 | 2 | 2 | 0 | 2 | 16 | 7.1 | |
| SOUTHEASTERN LA. | 11/30/13 | | 14 | 1-4 | .250 | 1-3 | .333 | 0-0 | .000 | 1 | 1 | 2 | 3.0 | 3 | 1 | 0 | 0 | 0 | 3 | 6.6 | |
| at BYU | 12/03/13 | | 20 | 1-7 | .143 | 1-5 | .200 | 0-0 | .000 | 0 | 4 | 4 | 3.1 | 3 | 0 | 0 | 0 | 0 | 3 | 6.2 | |
| STEPHEN F. AUSTIN | 12/15/13 | | 20 | 2-4 | .500 | 0-2 | .000 | 3-6 | .500 | 0 | 0 | 0 | 2.8 | 1 | 0 | 1 | 0 | 2 | 7 | 6.3 | |
| CENTRAL ARKANSAS | 12/17/13 | * | 10 | 1-1 | 1.000 | 1-1 | 1.000 | 0-0 | .000 | 0 | 0 | 0 | 2.5 | 5 | 1 | 1 | 0 | 0 | 3 | 6.0 | |
| WAYLAND BAPTIST | 12/21/13 | * | 27 | 0-4 | .000 | 0-4 | .000 | 1-4 | .250 | 1 | 2 | 3 | 2.6 | 0 | 1 | 1 | 0 | 1 | 1 | 5.6 | |
| Totals | | | 7 | 249 | 21-70 | .300 | 10-42 | .238 | 15-26 | .577 | 10 | 21 | 31 | 2.6 | 34 | 9 | 13 | 0 | 13 | 67 | 5.6 |

Games played: 12
Minutes/game: 20.8
Points/game: 5.6
FG Pct: 30.0
3FG Pct: 23.8
FT Pct: 57.7

Rebounds/game: 2.6
Assists/game: 0.8
Turnovers/game: 1.1
Assist/turnover ratio: 0.7
Steals/game: 1.1

↳ CAREER STATS

| Season | gp-gs | min/avg | Total | | 3-Point | | F-Throws | | Rebounds | | | | Scoring | | | | | | | |
|---------|-------|-----------|---------|------|---------|------|----------|------|----------|-----|-----|-----|---------|----|-----|----|-----|-----|-----|-----|
| | | | fg-fga | pct | fg-fga | pct | ft-fa | pct | off | def | tot | avg | pf | fo | ast | to | blk | stl | pts | avg |
| 2011-12 | 32-17 | 792/24.8 | 92-237 | .388 | 54-147 | .367 | 42-63 | .667 | 29 | 53 | 82 | 2.6 | 67 | 1 | 35 | 38 | 1 | 25 | 280 | 8.8 |
| 2012-13 | 1-0 | 1/1.0 | 0-0 | .000 | 0-0 | .000 | 0-0 | .000 | 0 | 0 | 0 | 0.0 | 0 | 0 | 0 | 0 | 0 | 0 | 0 | 0.0 |
| 2013-14 | 12-7 | 249/20.8 | 21-70 | .300 | 10-42 | .238 | 15-26 | .577 | 10 | 21 | 31 | 2.6 | 34 | 1 | 9 | 13 | 0 | 13 | 67 | 5.6 |
| TOTAL | 45-24 | 1042/23.2 | 113-307 | .368 | 64-189 | .339 | 57-89 | .640 | 39 | 74 | 113 | 2.5 | 101 | 2 | 44 | 51 | 1 | 38 | 347 | 7.7 |

3

ALZEE WILLIAMS

Sr. ▶ G ▶ 6-4 ▶ 182
 Dallas, TX ▶
 (Mississippi Elite Christian)



↳ CAREER HIGHS

Points: 30, Middle Tennessee -- 02/02/12
 Rebounds: 8, Lehigh -- 12/20/12; Wayland Baptist -- 12/21/13
 Assists: 5, Arkansas State -- 01/28/12; at Middle Tennessee -- 12/31/12
 Steals: 2, -- (5 Times); at Portland -- 11/23/13; Central Arkansas -- 12/17/13
 Blocks: 1, -- (8 Times)
 FG made: 10, Middle Tennessee -- 02/02/12
 FG attempts: 19, Middle Tennessee -- 02/02/12
 3FG made: 2, at UALR -- 01/10/13; at ULM -- 02/27/10; at Oklahoma -- 11/11/13
 3FG attempts: 4, at Loyola Marymount -- 12/04/11
 FT made: 12, Nicholls State -- 11/14/13
 FT attempts: 15, Southeastern La. -- 11/30/13

↳ 2013-14 STATS

| Opponent | Date | gs | min | Total | | 3-Pointers | | Free throws | | Rebounds | | | | pf | a | t/o | blk | stl | pts | avg | |
|-------------------|----------|----|-----|--------|--------|------------|-------|-------------|-------|----------|-----|-----|-----|-----|----|-----|-----|-----|-----|------|------|
| | | | | fg-fga | pct | 3fg-fga | pct | ft-fta | pct | off | def | tot | avg | | | | | | | | |
| NORTHWOOD | 11/8/13 | * | 30 | 9-15 | .600 | 0-0 | .000 | 4-5 | .800 | 3 | 0 | 3 | 3.0 | 3 | 0 | 0 | 0 | 0 | 22 | 22.0 | |
| at Oklahoma | 11/11/13 | * | 30 | 8-12 | .667 | 2-2 | 1.000 | 6-9 | .667 | 2 | 4 | 6 | 4.5 | 2 | 1 | 1 | 0 | 0 | 24 | 23.0 | |
| NICHOLLS STATE | 11/14/13 | * | 35 | 2-7 | .286 | 0-0 | .000 | 12-14 | .857 | 0 | 3 | 3 | 4.0 | 1 | 4 | 3 | 0 | 0 | 16 | 20.7 | |
| vs Columbia | 11/21/13 | * | 31 | 4-9 | .444 | 0-1 | .000 | 4-4 | 1.000 | 2 | 1 | 3 | 3.8 | 1 | 2 | 0 | 0 | 1 | 12 | 18.5 | |
| vs Idaho | 11/22/13 | * | 31 | 5-13 | .385 | 0-0 | .000 | 4-4 | 1.000 | 4 | 1 | 5 | 4.0 | 3 | 3 | 1 | 0 | 1 | 14 | 17.6 | |
| at Portland | 11/23/13 | * | 48 | 4-11 | .364 | 0-0 | .000 | 2-5 | .400 | 0 | 3 | 3 | 3.8 | 0 | 0 | 3 | 0 | 2 | 10 | 16.3 | |
| INCARNATE WORD | 11/26/13 | * | 29 | 6-11 | .545 | 0-2 | .000 | 2-4 | .500 | 0 | 3 | 3 | 3.7 | 0 | 1 | 0 | 0 | 0 | 14 | 16.0 | |
| SOUTHEASTERN LA. | 11/30/13 | * | 34 | 4-9 | .444 | 0-0 | .000 | 10-15 | .667 | 1 | 2 | 3 | 3.6 | 1 | 1 | 3 | 0 | 0 | 18 | 16.3 | |
| at BYU | 12/03/13 | * | 30 | 3-7 | .429 | 0-0 | .000 | 0-3 | .000 | 1 | 2 | 3 | 3.6 | 1 | 0 | 1 | 0 | 1 | 6 | 15.1 | |
| STEPHEN F. AUSTIN | 12/15/13 | * | 34 | 1-9 | .111 | 0-0 | .000 | 6-8 | .750 | 2 | 3 | 5 | 3.7 | 0 | 0 | 3 | 0 | 1 | 8 | 14.4 | |
| CENTRAL ARKANSAS | 12/17/13 | * | 34 | 3-10 | .300 | 0-1 | .000 | 4-4 | 1.000 | 0 | 2 | 2 | 3.5 | 1 | 2 | 1 | 0 | 2 | 10 | 14.0 | |
| WAYLAND BAPTIST | 12/21/13 | * | 24 | 8-15 | .533 | 0-0 | .000 | 8-9 | .889 | 3 | 5 | 8 | 3.9 | 2 | 0 | 1 | 0 | 1 | 24 | 14.8 | |
| Totals | | | 12 | 390 | 57-128 | .445 | 2-6 | .333 | 62-84 | .738 | 18 | 29 | 47 | 3.9 | 15 | 14 | 17 | 0 | 9 | 178 | 14.8 |

Games played: 12
 Minutes/game: 32.5
 Points/game: 14.8
 FG Pct: 44.5
 3FG Pct: 33.3
 FT Pct: 73.8

Rebounds/game: 3.9
 Assists/game: 1.2
 Turnovers/game: 1.4
 Assist/turnover ratio: 0.8
 Steals/game: 0.8

↳ CAREER STATS

| Season | gp-gs | min/avg | Total | | 3-Point | | F-Throws | | Rebounds | | | | Scoring | | | | | | | |
|---------|--------|-----------|---------|------|---------|------|----------|------|----------|-----|-----|-----|---------|----|-----|-----|-----|-----|-----|------|
| | | | fg-fga | pct | fg-fga | pct | ft-fta | pct | off | def | tot | avg | pf | fo | ast | to | blk | stl | pts | avg |
| 2009-10 | 32-0 | 244/7.6 | 21-64 | .328 | 5-31 | .161 | 14-22 | .636 | 3 | 20 | 23 | 0.7 | 19 | 0 | 5 | 18 | 3 | 7 | 61 | 1.9 |
| 2011-12 | 32-30 | 1018/31.8 | 126-267 | .472 | 5-21 | .238 | 78-99 | .788 | 36 | 73 | 109 | 3.4 | 36 | 0 | 54 | 41 | 2 | 17 | 335 | 10.5 |
| 2012-13 | 28-22 | 967/34.5 | 110-258 | .426 | 5-17 | .294 | 87-119 | .731 | 39 | 55 | 94 | 3.4 | 29 | 0 | 40 | 35 | 3 | 13 | 312 | 11.1 |
| 2013-14 | 12-12 | 390/32.5 | 57-128 | .445 | 2-6 | .333 | 62-84 | .738 | 18 | 29 | 47 | 3.9 | 15 | 0 | 14 | 17 | 0 | 9 | 178 | 14.8 |
| TOTAL | 104-64 | 2619/25.2 | 314-717 | .438 | 17-75 | .227 | 241-324 | .744 | 96 | 177 | 273 | 2.6 | 99 | 0 | 113 | 111 | 8 | 46 | 886 | 8.5 |

4

ARMANI FLANNIGAN

Jr. ▶ F ▶ 6-8 ▶ 200
Rockford, IL ▶
(Central Wyoming)



↳ CAREER HIGHS

Points: 7, Incarnate Word -- 11/26/13
Rebounds: 6, Incarnate Word -- 11/26/13; Northwood -- 11/8/13
Assists: 1, at Portland -- 11/23/13; Stephen F. Austin -- 12/15/13; Central Arkansas
Steals: 1, 4 times
Blocks: 3, vs Columbia -- 11/21/13
FG made: 3, at BYU -- 12/03/13
FG attempts: 3, 5 times
FT made: 3, Incarnate Word -- 11/26/13
FT attempts: 7, Northwood -- 11/8/13

↳ 2013-14 STATS

| Opponent | Date | gs | min | Total | | 3-Pointers | | Free throws | | Rebounds | | | | pf | a | t/o | blk | stl | pts | avg | |
|-------------------|----------|----|----------|------------|--------------|-------------|------------|-------------|-------------|-------------|-----------|-----------|-----------|------------|-----------|----------|----------|-----------|----------|-----------|------------|
| | | | | fg-fga | pct | 3fg-fga | pct | ft-fta | pct | off | def | tot | avg | | | | | | | | |
| NORTHWOOD | 11/8/13 | * | 16 | 1-1 | 1.000 | 0-0 | .000 | 1-7 | .143 | 1 | 5 | 6 | 6.0 | 3 | 0 | 1 | 2 | 1 | 3 | 3.0 | |
| at Oklahoma | 11/11/13 | | 7 | 1-2 | .500 | 0-0 | .000 | 0-0 | .000 | 0 | 0 | 0 | 3.0 | 1 | 0 | 1 | 1 | 0 | 2 | 2.5 | |
| NICHOLLS STATE | 11/14/13 | * | 12 | 0-1 | .000 | 0-0 | .000 | 1-2 | .500 | 2 | 1 | 3 | 3.0 | 0 | 0 | 2 | 1 | 0 | 1 | 2.0 | |
| vs Columbia | 11/21/13 | | 17 | 2-2 | 1.000 | 0-0 | .000 | 0-0 | .000 | 0 | 2 | 2 | 2.8 | 4 | 0 | 1 | 3 | 1 | 4 | 2.5 | |
| vs Idaho | 11/22/13 | | 18 | 2-3 | .667 | 0-0 | .000 | 0-2 | .000 | 0 | 0 | 0 | 2.2 | 3 | 0 | 1 | 2 | 0 | 4 | 2.8 | |
| at Portland | 11/23/13 | | 4 | 0-1 | .000 | 0-0 | .000 | 0-0 | .000 | 0 | 0 | 0 | 1.8 | 0 | 1 | 0 | 0 | 0 | 0 | 2.3 | |
| INCARNATE WORD | 11/26/13 | | 20 | 2-2 | 1.000 | 0-0 | .000 | 3-4 | .750 | 4 | 2 | 6 | 2.4 | 1 | 0 | 1 | 1 | 1 | 7 | 3.0 | |
| SOUTHEASTERN LA. | 11/30/13 | | 13 | 1-3 | .333 | 0-0 | .000 | 0-4 | .000 | 1 | 3 | 4 | 2.6 | 0 | 0 | 1 | 1 | 0 | 2 | 2.9 | |
| at BYU | 12/03/13 | | 5 | 3-3 | 1.000 | 0-0 | .000 | 0-0 | .000 | 0 | 1 | 1 | 2.4 | 0 | 0 | 0 | 1 | 1 | 6 | 3.2 | |
| STEPHEN F. AUSTIN | 12/15/13 | | 12 | 2-3 | .667 | 0-0 | .000 | 1-3 | .333 | 4 | 1 | 5 | 2.7 | 2 | 1 | 0 | 1 | 0 | 5 | 3.4 | |
| CENTRAL ARKANSAS | 12/17/13 | | 13 | 1-3 | .333 | 0-0 | .000 | 1-2 | .500 | 2 | 1 | 3 | 2.7 | 1 | 1 | 1 | 2 | 0 | 3 | 3.4 | |
| WAYLAND BAPTIST | 12/21/13 | | 5 | 1-2 | .500 | 0-0 | .000 | 1-1 | 1.000 | 0 | 0 | 0 | 2.5 | 1 | 0 | 0 | 0 | 0 | 3 | 3.3 | |
| Totals | | | 2 | 142 | 16-26 | .615 | 0-0 | .000 | 8-25 | .320 | 14 | 16 | 30 | 2.5 | 16 | 3 | 9 | 15 | 4 | 40 | 3.3 |

Games played: 12
Minutes/game: 11.8
Points/game: 3.3
FG Pct: 61.5
FT Pct: 32.0

Rebounds/game: 2.5
Assists/game: 0.3
Turnovers/game: 0.8
Assist/turnover ratio: 0.3
Steals/game: 0.3
Blocks/game: 1.3

↳ CAREER STATS

| Season | gp-gs | min/avg | Total | | 3-Point | | F-Throws | | Rebounds | | | | Scoring | | | | | | | |
|--------------|-------------|-----------------|--------------|-------------|------------|-------------|-------------|-------------|-----------|-----------|-----------|------------|-----------|----------|----------|----------|-----------|----------|-----------|------------|
| | | | fg-fga | pct | fg-fga | pct | ft-fta | pct | off | def | tot | avg | pf | fo | ast | to | blk | stl | pts | avg |
| 2013-14 | 12-2 | 142/11.8 | 16-26 | .615 | 0-0 | .000 | 8-25 | .320 | 14 | 16 | 30 | 2.5 | 16 | 0 | 3 | 9 | 15 | 4 | 40 | 3.3 |
| TOTAL | 12-2 | 142/11.8 | 16-26 | .615 | 0-0 | .000 | 8-25 | .320 | 14 | 16 | 30 | 2.5 | 16 | 0 | 3 | 9 | 15 | 4 | 40 | 3.3 |

5

CHRIS JONES

Jr. ▶ G ▶ 6-2 ▶ 203
Garland, TX ▶
(Lakeview Centennial HS)



↳ CAREER HIGHS

Points: 31, at Texas Tech -- 11/16/11
Rebounds: 12, St. Gregory's -- 11/11/11
Assists: 10, Troy -- 12/31/11
Steals: 6, UTA -- 11/28/12
Blocks: 1, -- (4 Times)
FG made: 9, at Texas Tech -- 11/16/11
FG attempts: 21, at Texas Tech -- 11/16/11
3FG made: 5, Jackson State -- 12/18/11
3FG attempts: 6, at UTA -- 11/22/11; at Mississippi St -- 11/27/11
FT made: 12, at Texas Tech -- 11/16/11
FT attempts: 13, at Texas Tech -- 11/16/11; ULL -- 12/1/12

↳ 2013-14 STATS

| Opponent | Date | gs | min | Total | | 3-Pointers | | Free throws | | Rebounds | | | | pf | a | t/o | blk | stl | pts | avg | |
|-------------------|----------|----|-----|--------|-------|------------|-------|-------------|-------|----------|-----|-----|-----|-----|----|-----|-----|-----|-----|------|-----|
| | | | | fg-fga | pct | 3fg-fga | pct | ft-fa | pct | off | def | tot | avg | | | | | | | | |
| NORTHWOOD | 11/8/13 | * | 28 | 5-10 | .500 | 0-1 | .000 | 3-4 | .750 | 2 | 4 | 6 | 6.0 | 3 | 4 | 5 | 0 | 1 | 13 | 13.0 | |
| at Oklahoma | 11/11/13 | | 31 | 7-14 | .500 | 2-2 | 1.000 | 0-1 | .000 | 2 | 3 | 5 | 5.5 | 5 | 3 | 2 | 0 | 1 | 16 | 14.5 | |
| NICHOLLS STATE | 11/14/13 | | 13 | 0-2 | .000 | 0-0 | .000 | 5-6 | .833 | 0 | 2 | 2 | 4.3 | 1 | 2 | 2 | 0 | 2 | 5 | 11.3 | |
| vs Columbia | 11/21/13 | * | 31 | 3-12 | .250 | 0-3 | .000 | 2-3 | .667 | 3 | 3 | 6 | 4.8 | 0 | 4 | 1 | 0 | 4 | 8 | 10.5 | |
| vs Idaho | 11/22/13 | * | 20 | 3-7 | .429 | 0-1 | .000 | 0-0 | .000 | 0 | 0 | 0 | 3.8 | 0 | 1 | 1 | 0 | 0 | 6 | 9.6 | |
| at Portland | 11/23/13 | * | 42 | 5-10 | .500 | 1-1 | 1.000 | 1-3 | .333 | 1 | 9 | 10 | 4.8 | 4 | 6 | 3 | 0 | 2 | 12 | 10.0 | |
| INCARNATE WORD | 11/26/13 | * | 22 | 1-4 | .250 | 0-1 | .000 | 2-2 | 1.000 | 1 | 7 | 8 | 5.3 | 3 | 7 | 3 | 0 | 1 | 4 | 9.1 | |
| SOUTHEASTERN LA. | 11/30/13 | * | 28 | 4-8 | .500 | 1-1 | 1.000 | 5-5 | 1.000 | 1 | 1 | 2 | 4.9 | 3 | 3 | 0 | 0 | 1 | 14 | 9.8 | |
| at BYU | 12/03/13 | * | 21 | 3-12 | .250 | 0-0 | .000 | 3-5 | .600 | 0 | 2 | 2 | 4.6 | 3 | 6 | 3 | 0 | 0 | 9 | 9.7 | |
| STEPHEN F. AUSTIN | 12/15/13 | * | 4 | 0-0 | .000 | 0-0 | .000 | 0-0 | .000 | 0 | 2 | 2 | 4.3 | 1 | 0 | 2 | 0 | 0 | 0 | 8.7 | |
| WAYLAND BAPTIST | 12/21/13 | | 30 | 5-10 | .500 | 0-1 | .000 | 3-4 | .750 | 1 | 5 | 6 | 4.5 | 2 | 5 | 2 | 0 | 2 | 13 | 9.1 | |
| Totals | | | 8 | 270 | 36-89 | .404 | 4-11 | .364 | 24-33 | .727 | 11 | 38 | 49 | 4.5 | 25 | 41 | 24 | 0 | 14 | 100 | 9.1 |

Games played: 11
Minutes/game: 24.5
Points/game: 9.1
FG Pct: 40.4
3FG Pct: 36.4
FT Pct: 72.7

Rebounds/game: 4.5
Assists/game: 3.7
Turnovers/game: 2.2
Assist/turnover ratio: 1.7
Steals/game: 1.3

↳ CAREER STATS

| Season | gp-gs | min/avg | Total | | 3-Point | | F-Throws | | Rebounds | | | | Scoring | | | | | | | |
|---------|-------|-----------|---------|------|---------|------|----------|------|----------|-----|-----|-----|---------|----|-----|-----|-----|-----|-----|------|
| | | | fg-fga | pct | fg-fga | pct | ft-fa | pct | off | def | tot | avg | pf | fo | ast | to | blk | stl | pts | avg |
| 2011-12 | 19-19 | 558/29.4 | 97-222 | .437 | 18-64 | .281 | 55-71 | .775 | 11 | 78 | 89 | 4.7 | 40 | 0 | 81 | 70 | 4 | 45 | 267 | 14.1 |
| 2012-13 | 16-14 | 437/27.3 | 54-140 | .386 | 3-18 | .167 | 36-55 | .655 | 13 | 45 | 58 | 3.6 | 44 | 1 | 74 | 46 | 0 | 34 | 147 | 9.2 |
| 2013-14 | 11-8 | 270/24.5 | 36-89 | .404 | 4-11 | .364 | 24-33 | .727 | 11 | 38 | 49 | 4.5 | 25 | 1 | 41 | 24 | 0 | 14 | 100 | 9.1 |
| TOTAL | 46-41 | 1265/27.5 | 187-451 | .415 | 25-93 | .269 | 115-159 | .723 | 35 | 161 | 196 | 4.3 | 109 | 2 | 196 | 140 | 4 | 93 | 514 | 11.2 |

10

AUSTIN MITCHELL

So. ▶ G ▶ 6-1 ▶ 180
 Plano, TX ▶
 (Plano HS)



↳ CAREER HIGHS

Rebounds: 1, -- (4 Times)
 Steals: 1, Lamar -- 11/13/12
 FG attempts: 1, at Creighton -- 11/09/12

↳ EXPECTED TO REDSHIRT THE 2013-14 SEASON

↳ CAREER STATS

| Season | gp-gs | min/avg | Total | | 3-Point | | F-Throws | | Rebounds | | | | Scoring | | | | | | | |
|--------------|-------|---------|--------|------|---------|------|----------|------|----------|-----|-----|-----|---------|----|-----|----|-----|-----|-----|-----|
| | | | fg-fga | pct | fg-fga | pct | ft-fta | pct | off | def | tot | avg | pf | fo | ast | to | blk | stl | pts | avg |
| 2012-13 | 19-0 | 18/0.9 | 0-1 | .000 | 0-0 | .000 | 0-0 | .000 | 1 | 2 | 3 | 0.2 | 0 | 0 | 0 | 2 | 0 | 1 | 0 | 0.0 |
| TOTAL | 19-0 | 18/0.9 | 0-1 | .000 | 0-0 | .000 | 0-0 | .000 | 1 | 2 | 3 | 0.2 | 0 | 0 | 0 | 2 | 0 | 1 | 0 | 0.0 |

21

**T.J.
TAYLOR**

Jr. ▶ G ▶ 6-3 ▶ 215
Denison, TX ▶
(Marquette)



↳ CAREER HIGHS

Points: 24, vs Idaho -- 11/22/13
Rebounds: 7, vs Idaho -- 11/22/13
Assists: 2, 5 times
Steals: 2, vs Idaho -- 11/22/13
Blocks: 1, at Portland -- 11/23/13; Southeastern La. -- 11/30/13
FG made: 9, vs Idaho -- 11/22/13
FG attempts: 14, at Portland -- 11/23/13
3FG made: 3, vs Idaho -- 11/22/13; at Portland -- 11/23/13
3FG attempts: 4, vs Idaho -- 11/22/13; at Portland -- 11/23/13
FT made: 6, at Portland -- 11/23/13
FT attempts: 9, at Portland -- 11/23/13

↳ 2013-14 STATS

| Opponent | Date | gs | min | Total | | 3-Pointers | | Free throws | | Rebounds | | | | pf | a | t/o | blk | stl | pts | avg |
|-------------------|----------|----|-----|--------|-------|------------|------|-------------|------|----------|-----|-----|-----|----|----|-----|-----|-----|-----|------|
| | | | | fg-fga | pct | 3fg-fga | pct | ft-fta | pct | off | def | tot | avg | | | | | | | |
| NICHOLLS STATE | 11/14/13 | 7 | | 1-1 | 1.000 | 0-0 | .000 | 0-0 | .000 | 1 | 0 | 1 | 1.0 | 1 | 0 | 1 | 0 | 0 | 2 | 2.0 |
| vs Columbia | 11/21/13 | 3 | | 0-0 | .000 | 0-0 | .000 | 0-0 | .000 | 0 | 0 | 0 | 0.5 | 1 | 0 | 1 | 0 | 0 | 0 | 1.0 |
| vs Idaho | 11/22/13 | 24 | | 9-11 | .818 | 3-4 | .750 | 3-4 | .750 | 5 | 2 | 7 | 2.7 | 1 | 2 | 0 | 0 | 2 | 24 | 8.7 |
| at Portland | 11/23/13 | 35 | | 6-14 | .429 | 3-4 | .750 | 6-9 | .667 | 1 | 2 | 3 | 2.8 | 1 | 2 | 1 | 1 | 0 | 21 | 11.8 |
| INCARNATE WORD | 11/26/13 | 20 | | 0-6 | .000 | 0-1 | .000 | 1-4 | .250 | 1 | 2 | 3 | 2.8 | 2 | 2 | 3 | 0 | 1 | 1 | 9.6 |
| SOUTHEASTERN LA. | 11/30/13 | 24 | | 2-4 | .500 | 0-2 | .000 | 0-0 | .000 | 2 | 1 | 3 | 2.8 | 1 | 0 | 0 | 1 | 0 | 4 | 8.7 |
| at BYU | 12/03/13 | 19 | | 4-8 | .500 | 1-3 | .333 | 0-2 | .000 | 1 | 0 | 1 | 2.6 | 2 | 2 | 1 | 0 | 2 | 9 | 8.7 |
| STEPHEN F. AUSTIN | 12/15/13 | 24 | | 2-5 | .400 | 0-1 | .000 | 0-1 | .000 | 0 | 1 | 1 | 2.4 | 4 | 0 | 4 | 0 | 1 | 4 | 8.1 |
| CENTRAL ARKANSAS | 12/17/13 | 29 | | 4-8 | .500 | 1-3 | .333 | 1-3 | .333 | 0 | 2 | 2 | 2.3 | 3 | 2 | 2 | 0 | 0 | 10 | 8.3 |
| WAYLAND BAPTIST | 12/21/13 | 15 | | 3-5 | .600 | 0-1 | .000 | 1-2 | .500 | 0 | 1 | 1 | 2.2 | 1 | 0 | 0 | 0 | 0 | 7 | 8.2 |
| Totals | | 0 | 200 | 31-62 | .500 | 8-19 | .421 | 12-25 | .480 | 11 | 11 | 22 | 2.2 | 17 | 10 | 13 | 2 | 6 | 82 | 8.2 |

Games played: 10
Minutes/game: 20.0
Points/game: 8.2
FG Pct: 50.0
3FG Pct: 42.1
FT Pct: 48.0

Rebounds/game: 2.2
Assists/game: 1.0
Turnovers/game: 1.3
Assist/turnover ratio: 0.8
Steals/game: 0.6
Blocks/game: 0.2

↳ CAREER STATS

| Season | gp-gs | min/avg | Total | | 3-Point | | F-Throws | | Rebounds | | | | Scoring | | | | | | | |
|---------|-------|----------|--------|------|---------|------|----------|------|----------|-----|-----|-----|---------|----|-----|----|-----|-----|-----|-----|
| | | | fg-fga | pct | fg-fga | pct | ft-fta | pct | off | def | tot | avg | pf | fo | ast | to | blk | stl | pts | avg |
| 2013-14 | 10-0 | 200/20.0 | 31-62 | .500 | 8-19 | .421 | 12-25 | .480 | 11 | 11 | 22 | 2.2 | 17 | 0 | 10 | 13 | 2 | 6 | 82 | 8.2 |
| TOTAL | 10-0 | 200/20.0 | 31-62 | .500 | 8-19 | .421 | 12-25 | .480 | 11 | 11 | 22 | 2.2 | 17 | 0 | 10 | 13 | 2 | 6 | 82 | 8.2 |

22

**GREG
WESLEY**

Fr. ▶ F ▶ 6-7 ▶ 190
Arlington, TX ▶
(Seguin HS)



↳ **CAREER HIGHS**

↳ **2013-14 STATS**

↳ **CAREER STATS**

23

JORDAN WILLIAMS

Jr. ▶ G ▶ 6-6 ▶ 202
Dallas ▶
(Kimball HS)



↳ CAREER HIGHS

Points: 31, at ULL -- 01/31/13
Rebounds: 10, Southeastern La. -- 11/30/13; Northwood -- 11/8/13
Assists: 5, La Sierra -- 12/2/11
Steals: 4, at Mississippi St -- 11/27/11
Blocks: 3, ULM -- 1/5/13; Cameron -- 11/16/12
FG made: 12, at ULL -- 01/31/13
FG attempts: 19, Western Kentucky -- 02/7/13
3FG made: 7, at Troy -- 02/16/13
3FG attempts: 9, at Troy -- 02/16/13
FT made: 8, at Florida Atlantic -- 1/19/13; Middle Tennessee -- 1/24/13
FT attempts: 11, at ULL -- 01/31/13

↳ 2013-14 STATS

| Opponent | Date | gs | min | Total | | 3-Pointers | | Free throws | | Rebounds | | | | pf | a | t/o | blk | stl | pts | avg | |
|-------------------|----------|----|-----|--------|--------|------------|-------|-------------|-------|----------|-----|-----|------|-----|----|-----|-----|-----|-----|------|------|
| | | | | fg-fga | pct | 3fg-fga | pct | ft-fta | pct | off | def | tot | avg | | | | | | | | |
| NORTHWOOD | 11/8/13 | * | 35 | 4-12 | .333 | 0-3 | .000 | 1-1 | 1.000 | 4 | 6 | 10 | 10.0 | 1 | 1 | 3 | 0 | 1 | 9 | 9.0 | |
| at Oklahoma | 11/11/13 | | 28 | 4-11 | .364 | 2-5 | .400 | 3-3 | 1.000 | 0 | 3 | 3 | 6.5 | 1 | 1 | 2 | 0 | 1 | 13 | 11.0 | |
| NICHOLLS STATE | 11/14/13 | | 24 | 4-10 | .400 | 3-4 | .750 | 3-3 | 1.000 | 1 | 5 | 6 | 6.3 | 3 | 0 | 1 | 0 | 0 | 14 | 12.0 | |
| vs Columbia | 11/21/13 | | 29 | 4-9 | .444 | 1-2 | .500 | 2-4 | .500 | 2 | 3 | 5 | 6.0 | 2 | 0 | 1 | 0 | 2 | 11 | 11.8 | |
| vs Idaho | 11/22/13 | | 30 | 3-10 | .300 | 0-4 | .000 | 3-6 | .500 | 2 | 6 | 8 | 6.4 | 2 | 0 | 1 | 2 | 1 | 9 | 11.2 | |
| at Portland | 11/23/13 | | 21 | 4-9 | .444 | 0-2 | .000 | 0-0 | .000 | 0 | 5 | 5 | 6.2 | 1 | 0 | 1 | 2 | 1 | 8 | 10.7 | |
| INCARNATE WORD | 11/26/13 | | 23 | 7-14 | .500 | 1-2 | .500 | 4-6 | .667 | 3 | 5 | 8 | 6.4 | 3 | 0 | 0 | 2 | 1 | 19 | 11.9 | |
| SOUTHEASTERN LA. | 11/30/13 | | 28 | 4-10 | .400 | 1-4 | .250 | 6-6 | 1.000 | 3 | 7 | 10 | 6.9 | 4 | 0 | 1 | 1 | 1 | 15 | 12.3 | |
| at BYU | 12/03/13 | | 10 | 3-14 | .214 | 0-5 | .000 | 1-2 | .500 | 3 | 2 | 5 | 6.7 | 0 | 0 | 1 | 0 | 2 | 7 | 11.7 | |
| STEPHEN F. AUSTIN | 12/15/13 | * | 35 | 4-12 | .333 | 1-3 | .333 | 5-6 | .833 | 1 | 6 | 7 | 6.7 | 4 | 1 | 5 | 1 | 2 | 14 | 11.9 | |
| CENTRAL ARKANSAS | 12/17/13 | * | 27 | 4-9 | .444 | 1-4 | .250 | 2-3 | .667 | 3 | 2 | 5 | 6.5 | 2 | 0 | 4 | 0 | 0 | 11 | 11.8 | |
| WAYLAND BAPTIST | 12/21/13 | * | 22 | 2-4 | .500 | 0-1 | .000 | 5-6 | .833 | 2 | 5 | 7 | 6.6 | 4 | 2 | 1 | 0 | 2 | 9 | 11.6 | |
| Totals | | | 4 | 312 | 47-124 | .379 | 10-39 | .256 | 35-46 | .761 | 24 | 55 | 79 | 6.6 | 27 | 5 | 21 | 8 | 14 | 139 | 11.6 |

Games played: 12
Minutes/game: 26.0
Points/game: 11.6
FG Pct: 37.9
3FG Pct: 25.6
FT Pct: 76.1

Rebounds/game: 6.6
Assists/game: 0.4
Turnovers/game: 1.8
Assist/turnover ratio: 0.2
Steals/game: 1.2
Blocks/game: 0.7

↳ CAREER STATS

| Season | gp-gs | min/avg | Total | | 3-Point | | F-Throws | | Rebounds | | | | Scoring | | | | | | | |
|---------|-------|-----------|---------|------|---------|------|----------|------|----------|-----|-----|-----|---------|----|-----|-----|-----|-----|-----|------|
| | | | fg-fga | pct | fg-fga | pct | ft-fta | pct | off | def | tot | avg | pf | fo | ast | to | blk | stl | pts | avg |
| 2011-12 | 19-13 | 480/25.3 | 71-173 | .410 | 23-84 | .274 | 42-54 | .778 | 36 | 40 | 76 | 4.0 | 39 | 0 | 25 | 41 | 9 | 21 | 207 | 10.9 |
| 2012-13 | 32-28 | 1014/31.7 | 153-368 | .416 | 46-135 | .341 | 101-138 | .732 | 50 | 69 | 119 | 3.7 | 72 | 2 | 23 | 69 | 18 | 23 | 453 | 14.2 |
| 2013-14 | 12-4 | 312/26.0 | 47-124 | .379 | 10-39 | .256 | 35-46 | .761 | 24 | 55 | 79 | 6.6 | 27 | 0 | 5 | 21 | 8 | 14 | 139 | 11.6 |
| TOTAL | 63-45 | 1806/28.7 | 271-665 | .408 | 79-258 | .306 | 178-238 | .748 | 110 | 164 | 274 | 4.3 | 138 | 2 | 53 | 131 | 35 | 58 | 799 | 12.7 |

24

KELVIN GAINES

Jr. ▶ F ▶ 6-10 ▶ 240
 Ocala, FL ▶
 (Cincinnati)



↳ CAREER HIGHS

Rebounds: 1, Stephen F. Austin – 12/15/13
 FG attempts: 2, Stephen F. Austin – 12/15/13

↳ 2013-14 STATS

| Opponent | Date | gs | min | Total | | 3-Pointers | | Free throws | | Rebounds | | | | pf | a | t/o | blk | stl | pts | avg |
|-------------------|----------|----|-----|--------|------|------------|------|-------------|------|----------|-----|-----|-----|----|---|-----|-----|-----|-----|-----|
| | | | | fg-fga | pct | 3fg-fga | pct | ft-fta | pct | off | def | tot | avg | | | | | | | |
| STEPHEN F. AUSTIN | 12/15/13 | 3 | 3 | 0-2 | .000 | 0-0 | .000 | 0-0 | .000 | 1 | 0 | 1 | 1.0 | 0 | 0 | 1 | 0 | 0 | 0 | 0.0 |
| Totals | | 0 | 3 | 0-2 | .000 | 0-0 | .000 | 0-0 | .000 | 1 | 0 | 1 | 1.0 | 0 | 0 | 1 | 0 | 0 | 0 | 0.0 |

Games played: 1
 Minutes/game: 3.0
 FG Pct: 0.0

Rebounds/game: 1.0
 Turnovers/game: 1.0

↳ CAREER STATS

| Season | gp-gs | min/avg | Total | | 3-Point | | F-Throws | | Rebounds | | | | Scoring | | | | | | | |
|--------------|-------|---------|--------|------|---------|------|----------|------|----------|-----|-----|-----|---------|----|-----|----|-----|-----|-----|-----|
| | | | fg-fga | pct | fg-fga | pct | ft-fta | pct | off | def | tot | avg | pf | fo | ast | to | blk | stl | pts | avg |
| 2013-14 | 1-0 | 3/3.0 | 0-2 | .000 | 0-0 | .000 | 0-0 | .000 | 1 | 0 | 1 | 1.0 | 0 | 0 | 0 | 1 | 0 | 0 | 0 | 0.0 |
| TOTAL | 1-0 | 3/3.0 | 0-2 | .000 | 0-0 | .000 | 0-0 | .000 | 1 | 0 | 1 | 1.0 | 0 | 0 | 0 | 1 | 0 | 0 | 0 | 0.0 |

33

**COLIN
VOSS**

Jr. ▶ F ▶ 6-7 ▶ 240
Grand Rapids, MI ▶
(Northern Oklahoma)



↳ CAREER HIGHS

Points: 18, Wayland Baptist -- 12/21/13
Rebounds: 12, Southeastern La. -- 11/30/13
Assists: 2, Southeastern La. -- 11/30/13
Steals: 1, 4 times
Blocks: 1, Incarnate Word -- 11/26/13; Wayland Baptist -- 12/21/13
FG made: 9, Wayland Baptist -- 12/21/13
FG attempts: 14, Wayland Baptist -- 12/21/13
FT made: 7, Central Arkansas -- 12/17/13
FT attempts: 10, Central Arkansas -- 12/17/13

↳ 2013-14 STATS

| Opponent | Date | gs | min | Total | | 3-Pointers | | Free throws | | Rebounds | | | | pf | a | t/o | blk | stl | pts | avg | |
|-------------------|----------|----|-----------|------------|--------------|-------------|------------|-------------|--------------|-------------|-----------|-----------|-----------|------------|-----------|----------|-----------|----------|----------|-----------|------------|
| | | | | fg-fga | pct | 3fg-fga | pct | ft-fta | pct | off | def | tot | avg | | | | | | | | |
| NORTHWOOD | 11/8/13 | | 15 | 0-5 | .000 | 0-0 | .000 | 2-2 | 1.000 | 1 | 1 | 2 | 2.0 | 1 | 1 | 1 | 0 | 1 | 2 | 2.0 | |
| at Oklahoma | 11/11/13 | * | 16 | 0-1 | .000 | 0-0 | .000 | 0-0 | .000 | 1 | 4 | 5 | 3.5 | 3 | 0 | 3 | 0 | 0 | 0 | 1.0 | |
| NICHOLLS STATE | 11/14/13 | | 13 | 0-0 | .000 | 0-0 | .000 | 0-0 | .000 | 3 | 1 | 4 | 3.7 | 0 | 1 | 2 | 0 | 0 | 0 | 0.7 | |
| vs Columbia | 11/21/13 | * | 24 | 2-6 | .333 | 0-0 | .000 | 1-2 | .500 | 2 | 2 | 4 | 3.8 | 1 | 0 | 1 | 0 | 0 | 5 | 1.8 | |
| vs Idaho | 11/22/13 | * | 20 | 3-6 | .500 | 0-0 | .000 | 2-2 | 1.000 | 4 | 4 | 8 | 4.6 | 1 | 1 | 1 | 0 | 0 | 8 | 3.0 | |
| at Portland | 11/23/13 | * | 28 | 3-6 | .500 | 0-0 | .000 | 0-0 | .000 | 0 | 6 | 6 | 4.8 | 1 | 0 | 2 | 0 | 1 | 6 | 3.5 | |
| INCARNATE WORD | 11/26/13 | * | 14 | 1-2 | .500 | 0-0 | .000 | 3-4 | .750 | 0 | 5 | 5 | 4.9 | 1 | 0 | 1 | 1 | 0 | 5 | 3.7 | |
| SOUTHEASTERN LA. | 11/30/13 | * | 26 | 2-6 | .333 | 0-0 | .000 | 1-2 | .500 | 2 | 10 | 12 | 5.8 | 3 | 2 | 2 | 0 | 0 | 5 | 3.9 | |
| at BYU | 12/03/13 | * | 31 | 1-4 | .250 | 0-0 | .000 | 0-0 | .000 | 1 | 2 | 3 | 5.4 | 2 | 0 | 0 | 0 | 1 | 2 | 3.7 | |
| STEPHEN F. AUSTIN | 12/15/13 | * | 25 | 1-1 | 1.000 | 0-0 | .000 | 0-2 | .000 | 1 | 0 | 1 | 5.0 | 2 | 0 | 3 | 0 | 1 | 2 | 3.5 | |
| CENTRAL ARKANSAS | 12/17/13 | * | 26 | 3-3 | 1.000 | 0-0 | .000 | 7-10 | .700 | 3 | 8 | 11 | 5.5 | 1 | 1 | 1 | 0 | 0 | 13 | 4.4 | |
| WAYLAND BAPTIST | 12/21/13 | * | 33 | 9-14 | .643 | 0-0 | .000 | 0-1 | .000 | 2 | 8 | 10 | 5.9 | 3 | 0 | 1 | 1 | 0 | 18 | 5.5 | |
| Totals | | | 10 | 271 | 25-54 | .463 | 0-0 | .000 | 16-25 | .640 | 20 | 51 | 71 | 5.9 | 19 | 6 | 18 | 2 | 4 | 66 | 5.5 |

Games played: 12
Minutes/game: 22.6
Points/game: 5.5
FG Pct: 46.3
FT Pct: 64.0

Rebounds/game: 5.9
Assists/game: 0.5
Turnovers/game: 1.5
Assist/turnover ratio: 0.3
Steals/game: 0.3
Blocks/game: 0.2

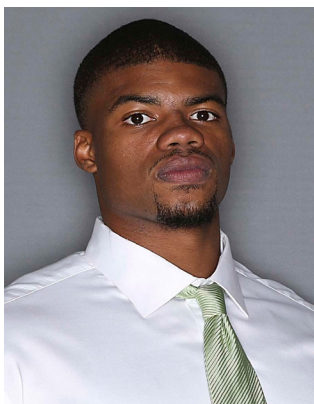
↳ CAREER STATS

| Season | gp-gs | min/avg | Total | | 3-Point | | F-Throws | | Rebounds | | | | Scoring | | | | | | | |
|--------------|--------------|-----------------|--------------|-------------|------------|-------------|--------------|-------------|-----------|-----------|-----------|------------|-----------|----------|----------|-----------|----------|----------|-----------|------------|
| | | | fg-fga | pct | fg-fga | pct | ft-fta | pct | off | def | tot | avg | pf | fo | ast | to | blk | stl | pts | avg |
| 2013-14 | 12-10 | 271/22.6 | 25-54 | .463 | 0-0 | .000 | 16-25 | .640 | 20 | 51 | 71 | 5.9 | 19 | 0 | 6 | 18 | 2 | 4 | 66 | 5.5 |
| TOTAL | 12-10 | 271/22.6 | 25-54 | .463 | 0-0 | .000 | 16-25 | .640 | 20 | 51 | 71 | 5.9 | 19 | 0 | 6 | 18 | 2 | 4 | 66 | 5.5 |

44

KEITH COLEMAN

Jr. ▶ F ▶ 6-10 ▶ 250
Philadelphia, PA ▶
(Marshalltown CC)



↳ CAREER HIGHS

Points: 14, at Oklahoma -- 11/11/13
Rebounds: 10, at Oklahoma -- 11/11/13
Assists: 2, Wayland Baptist -- 12/21/13
Steals: 1, Northwood -- 11/8/13; Central Arkansas -- 12/17/13
Blocks: 4, Incarnate Word -- 11/26/13
FG made: 6, at Oklahoma -- 11/11/13
FG attempts: 11, at Oklahoma -- 11/11/13
FT made: 3, at ULL -- 01/31/13
FT attempts: 6, Incarnate Word -- 11/26/13

↳ 2013-14 STATS

| Opponent | Date | gs | min | Total | | 3-Pointers | | Free throws | | Rebounds | | | | pf | a | t/o | blk | stl | pts | avg | |
|------------------|----------|----|-----------|------------|--------------|-------------|------------|-------------|-------------|-------------|-----------|-----------|-----------|------------|-----------|----------|-----------|-----------|----------|-----------|------------|
| | | | | fg-fga | pct | 3fg-fga | pct | ft-fta | pct | off | def | tot | avg | | | | | | | | |
| NORTHWOOD | 11/8/13 | * | 13 | 0-2 | .000 | 0-0 | .000 | 1-2 | .500 | 2 | 1 | 3 | 3.0 | 4 | 1 | 0 | 2 | 1 | 1 | 1.0 | |
| at Oklahoma | 11/11/13 | * | 28 | 6-11 | .545 | 0-0 | .000 | 2-3 | .667 | 3 | 7 | 10 | 6.5 | 4 | 0 | 3 | 1 | 0 | 14 | 7.5 | |
| NICHOLLS STATE | 11/14/13 | * | 19 | 4-6 | .667 | 0-0 | .000 | 0-0 | .000 | 2 | 6 | 8 | 7.0 | 3 | 0 | 2 | 1 | 0 | 8 | 7.7 | |
| vs Columbia | 11/21/13 | * | 20 | 3-10 | .300 | 0-0 | .000 | 0-0 | .000 | 0 | 5 | 5 | 6.5 | 0 | 0 | 0 | 1 | 0 | 6 | 7.3 | |
| vs Idaho | 11/22/13 | * | 16 | 1-5 | .200 | 0-0 | .000 | 1-2 | .500 | 1 | 3 | 4 | 6.0 | 0 | 0 | 4 | 0 | 0 | 3 | 6.4 | |
| at Portland | 11/23/13 | * | 28 | 3-6 | .500 | 0-0 | .000 | 0-1 | .000 | 1 | 5 | 6 | 6.0 | 4 | 0 | 2 | 1 | 0 | 6 | 6.3 | |
| INCARNATE WORD | 11/26/13 | * | 20 | 1-3 | .333 | 0-0 | .000 | 2-6 | .333 | 1 | 4 | 5 | 5.9 | 2 | 0 | 0 | 4 | 0 | 4 | 6.0 | |
| SOUTHEASTERN LA. | 11/30/13 | * | 16 | 5-7 | .714 | 0-0 | .000 | 0-0 | .000 | 0 | 4 | 4 | 5.6 | 4 | 0 | 2 | 1 | 0 | 10 | 6.5 | |
| at BYU | 12/03/13 | * | 29 | 2-3 | .667 | 0-0 | .000 | 1-2 | .500 | 2 | 4 | 6 | 5.7 | 3 | 0 | 3 | 3 | 0 | 5 | 6.3 | |
| CENTRAL ARKANSAS | 12/17/13 | * | 15 | 2-3 | .667 | 0-0 | .000 | 0-0 | .000 | 1 | 4 | 5 | 5.6 | 1 | 0 | 1 | 0 | 1 | 4 | 6.1 | |
| WAYLAND BAPTIST | 12/21/13 | * | 9 | 0-3 | .000 | 0-0 | .000 | 0-0 | .000 | 0 | 1 | 1 | 5.2 | 3 | 2 | 3 | 2 | 0 | 0 | 5.5 | |
| Totals | | | 11 | 213 | 27-59 | .458 | 0-0 | .000 | 7-16 | .438 | 13 | 44 | 57 | 5.2 | 28 | 3 | 20 | 16 | 2 | 61 | 5.5 |

Games played: 11
Minutes/game: 19.4
Points/game: 5.5
FG Pct: 45.8
FT Pct: 43.8

Rebounds/game: 5.2
Assists/game: 0.3
Turnovers/game: 1.8
Assist/turnover ratio: 0.2
Steals/game: 0.2
Blocks/game: 1.5

↳ CAREER STATS

| Season | gp-gs | min/avg | Total | | 3-Point | | F-Throws | | Rebounds | | | | Scoring | | | | | | | |
|--------------|--------------|-----------------|---------------|-------------|------------|-------------|--------------|-------------|-----------|-----------|------------|------------|-----------|----------|----------|-----------|-----------|----------|------------|------------|
| | | | fg-fga | pct | fg-fga | pct | ft-fta | pct | off | def | tot | avg | pf | fo | ast | to | blk | stl | pts | avg |
| 2012-13 | 30-1 | 254/8.5 | 16-46 | .348 | 0-0 | .000 | 8-18 | .444 | 13 | 36 | 49 | 1.6 | 41 | 0 | 4 | 24 | 11 | 4 | 40 | 1.3 |
| 2013-14 | 11-11 | 213/19.4 | 27-59 | .458 | 0-0 | .000 | 7-16 | .438 | 13 | 44 | 57 | 5.2 | 28 | 0 | 3 | 20 | 16 | 2 | 61 | 5.5 |
| TOTAL | 41-12 | 467/11.4 | 43-105 | .410 | 0-0 | .000 | 15-34 | .441 | 26 | 80 | 106 | 2.6 | 69 | 0 | 7 | 44 | 27 | 6 | 101 | 2.5 |

2012-13 SEASON STATS TEAM/INDIVIDUAL

| RECORD: | OVERALL | HOME | AWAY | NEUTRAL |
|----------------|---------|------|------|---------|
| ALL GAMES | 7-5 | 6-1 | 1-2 | 0-2 |
| CONFERENCE | 0-0 | 0-0 | 0-0 | 0-0 |
| NON-CONFERENCE | 7-5 | 6-1 | 1-2 | 0-2 |

| # | Player | gp-gs | min | avg | Total | | 3-Point | | F-Throw | | Rebounds | | | | pf | dq | a | to | blk | stl | pts | avg | | |
|----------------|-------------------|-------|------|------|---------|------|---------|------|---------|------|----------|-----|-----|------|-----|----|-----|-----|-----|-----|-----|------|--|--|
| | | | | | fg-fga | fg% | 3fg-fga | 3fg% | ft-fta | ft% | off | def | tot | avg | | | | | | | | | | |
| 03 | WILLIAMS, Alzee | 12-12 | 390 | 32.5 | 57-128 | .445 | 2-6 | .333 | 62-84 | .738 | 18 | 29 | 47 | 3.9 | 15 | 0 | 14 | 17 | 0 | 9 | 178 | 14.8 | | |
| 23 | WILLIAMS, Jordan | 12-4 | 312 | 26.0 | 47-124 | .379 | 10-39 | .256 | 35-46 | .761 | 24 | 55 | 79 | 6.6 | 27 | 0 | 5 | 21 | 8 | 14 | 139 | 11.6 | | |
| 05 | JONES, Chris | 11-8 | 270 | 24.5 | 36-89 | .404 | 4-11 | .364 | 24-33 | .727 | 11 | 38 | 49 | 4.5 | 25 | 1 | 41 | 24 | 0 | 14 | 100 | 9.1 | | |
| 00 | VAUGHNS, Vertrail | 11-5 | 226 | 20.5 | 25-75 | .333 | 9-30 | .300 | 34-42 | .810 | 3 | 17 | 20 | 1.8 | 25 | 0 | 17 | 18 | 1 | 8 | 93 | 8.5 | | |
| 21 | TAYLOR, T.J. | 10-0 | 200 | 20.0 | 31-62 | .500 | 8-19 | .421 | 12-25 | .480 | 11 | 11 | 22 | 2.2 | 17 | 0 | 10 | 13 | 2 | 6 | 82 | 8.2 | | |
| 01 | ANIEFIOK, Maurice | 10-1 | 174 | 17.4 | 19-43 | .442 | 13-28 | .464 | 12-15 | .800 | 4 | 39 | 43 | 4.3 | 31 | 1 | 4 | 6 | 1 | 2 | 63 | 6.3 | | |
| 02 | WALTON, Brandon | 12-7 | 249 | 20.8 | 21-70 | .300 | 10-42 | .238 | 15-26 | .577 | 10 | 21 | 31 | 2.6 | 34 | 1 | 9 | 13 | 0 | 13 | 67 | 5.6 | | |
| 44 | COLEMAN, Keith | 11-11 | 213 | 19.4 | 27-59 | .458 | 0-0 | .000 | 7-16 | .438 | 13 | 44 | 57 | 5.2 | 28 | 0 | 3 | 20 | 16 | 2 | 61 | 5.5 | | |
| 33 | VOSS, Colin | 12-10 | 271 | 22.6 | 25-54 | .463 | 0-0 | .000 | 16-25 | .640 | 20 | 51 | 71 | 5.9 | 19 | 0 | 6 | 18 | 2 | 4 | 66 | 5.5 | | |
| 04 | FLANNIGAN, Armani | 12-2 | 142 | 11.8 | 16-26 | .615 | 0-0 | .000 | 8-25 | .320 | 14 | 16 | 30 | 2.5 | 16 | 0 | 3 | 9 | 15 | 4 | 40 | 3.3 | | |
| 24 | GAINES, Kelvin | 1-0 | 3 | 3.0 | 0-2 | .000 | 0-0 | .000 | 0-0 | .000 | 1 | 0 | 1 | 1.0 | 0 | 0 | 0 | 1 | 0 | 0 | 0 | 0.0 | | |
| Team | | | | | | | | | | | 24 | 25 | 49 | | | | | | | | | | | |
| Total..... | | 12 | 2450 | | 304-732 | .415 | 56-175 | .320 | 225-337 | .668 | 153 | 346 | 499 | 41.6 | 237 | 3 | 112 | 160 | 45 | 76 | 889 | 74.1 | | |
| Opponents..... | | 12 | 2450 | | 326-769 | .424 | 74-215 | .344 | 187-277 | .675 | 140 | 335 | 475 | 39.6 | 256 | - | 138 | 143 | 52 | 80 | 913 | 76.1 | | |

| TEAM STATISTICS | NT | OPP | Date | Opponent | Score | Att. |
|------------------------|---------|---------|---------------------|-------------------|-----------|-------|
| SCORING | 889 | 913 | 11/8/13 | NORTHWOOD | w 72-67 | 2236 |
| Points per game | 74.1 | 76.1 | 11/11/13 | at Oklahoma | L 82-95 | 9288 |
| Scoring margin | -2.0 | - | 11/14/13 | NICHOLLS STATE | w 92-78 | 2146 |
| FIELD GOALS-ATT | 304-732 | 326-769 | 11/21/13 | vs Columbia | L 66-70 | 0 |
| Field goal pct | .415 | .424 | 11/22/13 | vs Idaho | L 76-87 | 0 |
| 3 POINT FG-ATT | 56-175 | 74-215 | 11/23/13 | at Portland | Wo2 77-72 | 1668 |
| 3-point FG pct | .320 | .344 | 11/26/13 | INCARNATE WORD | w 84-67 | 2148 |
| 3-pt FG made per game | 4.7 | 6.2 | 11/30/13 | SOUTHEASTERN LA. | w 75-61 | 1861 |
| FREE THROWS-ATT | 225-337 | 187-277 | 12/03/13 | at BYU | L 67-97 | 13908 |
| Free throw pct | .668 | .675 | 12/15/13 | STEPHEN F. AUSTIN | L 53-87 | 1238 |
| F-Throws made per game | 18.8 | 15.6 | 12/17/13 | CENTRAL ARKANSAS | w 64-55 | 3664 |
| REBOUNDS | 499 | 475 | 12/21/13 | WAYLAND BAPTIST | w 81-77 | 881 |
| Rebounds per game | 41.6 | 39.6 | | | | |
| Rebounding margin | +2.0 | - | * - Conference game | | | |
| ASSISTS | 112 | 138 | | | | |
| Assists per game | 9.3 | 11.5 | | | | |
| TURNOVERS | 160 | 143 | | | | |
| Turnovers per game | 13.3 | 11.9 | | | | |
| Turnover margin | -1.4 | - | | | | |
| Assist/turnover ratio | 0.7 | 1.0 | | | | |
| STEALS | 76 | 80 | | | | |
| Steals per game | 6.3 | 6.7 | | | | |
| BLOCKS | 45 | 52 | | | | |
| Blocks per game | 3.8 | 4.3 | | | | |
| ATTENDANCE | 14174 | 24864 | | | | |
| Home games-Avg/Game | 7-2025 | 3-8288 | | | | |
| Neutral site-Avg/Game | - | 2-0 | | | | |

| Score by Periods | 1st | 2nd | OT | OT2 | Totals |
|------------------|-----|-----|----|-----|--------|
| North Texas | 400 | 465 | 10 | 14 | 889 |
| Opponents | 414 | 480 | 10 | 9 | 913 |

2012-13 GAME-BY-GAME

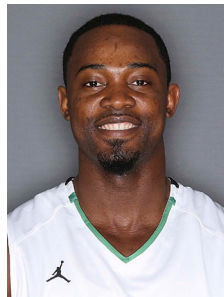
| Opponent | 1st | 2nd | Score | Mar | Total FG | FG Pct | 3-Pointers | 3FG Pct | Free Throws | FT Pct | Rebounds | Assist | T/Over | Block | Steal | Fouls |
|-------------------|-------|-------|-------|------|-------------|-----------|------------|-----------|-------------|-----------|------------|--------|--------|-------|-------|-------|
| NORTHWOOD | 35/33 | 37/34 | 72-67 | +5 | 25-69/21-61 | .362/.344 | 3-17/5-19 | .176/.263 | 19-31/20-30 | .613/.667 | 57/41 +16 | 10/6 | 14/16 | 4/5 | 9/8 | 23/27 |
| Oklahoma | 38/48 | 44/47 | 82-95 | (13) | 30-67/36-68 | .448/.529 | 8-18/8-18 | .444/.444 | 14-20/15-24 | .700/.625 | 39/36 +3 | 13/15 | 16/11 | 2/5 | 4/10 | 22/18 |
| NICHOLLS STATE | 38/36 | 54/42 | 92-78 | +14 | 23-47/28-65 | .489/.431 | 7-11/8-22 | .636/.364 | 39-46/14-25 | .848/.560 | 44/26 +18 | 9/12 | 16/6 | 2/2 | 3/8 | 18/29 |
| Columbia | 29/39 | 37/31 | 66-70 | (4) | 24-66/24-51 | .364/.471 | 5-16/12-22 | .313/.545 | 13-18/10-14 | .722/.714 | 34/36 (2) | 6/12 | 7/16 | 4/1 | 11/5 | 14/13 |
| Idaho | 33/42 | 43/45 | 76-87 | (11) | 29-66/33-66 | .439/.500 | 3-14/8-18 | .214/.444 | 15-26/13-14 | .577/.929 | 38/39 (1) | 8/10 | 11/11 | 4/5 | 5/6 | 18/21 |
| Portland | 20/28 | 33/25 | 77-72 | +5 | 30-68/27-73 | .441/.370 | 8-16/3-18 | .500/.167 | 9-18/15-27 | .500/.556 | 39/56 (17) | 9/14 | 15/16 | 4/7 | 8/9 | 20/20 |
| INCARNATE WORD | 42/16 | 42/51 | 84-67 | +17 | 26-59/23-71 | .441/.324 | 7-15/5-16 | .467/.313 | 25-38/16-19 | .658/.842 | 47/44 +3 | 13/11 | 10/13 | 8/3 | 7/3 | 21/23 |
| SOUTHEASTERN LA. | 41/27 | 34/34 | 75-61 | +14 | 25-56/21-61 | .446/.344 | 3-11/3-16 | .273/.188 | 22-32/16-27 | .688/.593 | 45/37 +8 | 8/8 | 11/9 | 5/3 | 2/1 | 22/23 |
| BYU | 35/42 | 32/55 | 67-97 | (30) | 28-79/38-77 | .354/.494 | 6-23/4-12 | .261/.333 | 5-14/17-24 | .357/.708 | 38/60 (22) | 13/24 | 12/15 | 5/5 | 8/7 | 20/15 |
| STEPHEN F. AUSTIN | 24/47 | 29/40 | 53-87 | (34) | 15-43/27-56 | .349/.482 | 2-9/7-19 | .222/.368 | 21-33/26-29 | .636/.897 | 31/34 (3) | 2/12 | 22/10 | 2/8 | 9/8 | 21/23 |
| CENTRAL ARKANSAS | 30/23 | 34/32 | 64-55 | +9 | 19-48/21-53 | .396/.396 | 4-16/4-11 | .250/.364 | 22-30/9-19 | .733/.474 | 43/28 +15 | 10/5 | 16/9 | 2/2 | 4/10 | 17/18 |
| WAYLAND BAPTIST | 35/33 | 46/44 | 81-77 | +4 | 30-64/27-67 | .469/.403 | 0-9/7-24 | .000/.292 | 21-31/16-25 | .677/.640 | 44/38 +6 | 11/9 | 10/11 | 3/6 | 6/5 | 21/26 |

Note: Game totals are displayed in the format TEAM/OPPONENT for each category

RADIO-TV CHART



0 Vertrail Vaughns
6-2 • 194 • Sr. • G
Mesquite, Texas



1 Maurice Aniefiok
6-5 • 212 • So. • G/F
Lagos, Nigeria



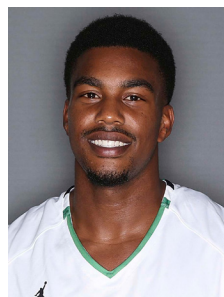
2 Brandan Walton
6-2 • 205 • Sr. • G
Compton, Calif.



3 Alzee Williams
6-4 • 182 • Sr. • G
Dallas



4 Armani Flannigan
6-8 • 200 • Jr. • F
Rockford, Ill.



5 Chris Jones
6-2 • 203 • Jr. • G
Garland, Texas



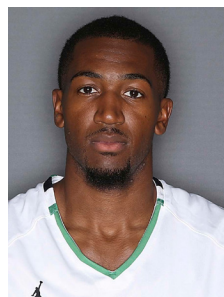
10 Austin Mitchell
6-1 • 180 • So. • G
Plano, Texas



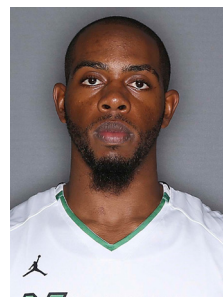
21 T.J. Taylor
6-3 • 215 • Jr. • G
Denison, Texas



22 Greg Wesley
6-7 • 190 • Fr. • F
Arlington, Texas



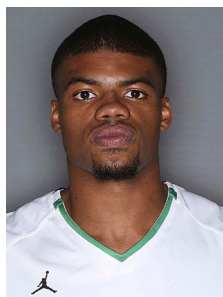
23 Jordan Williams
6-6 • 202 • Jr. • G
Dallas



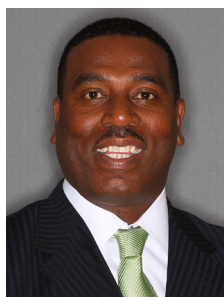
24 Kelvin Gaines
6-10 • 240 • Jr. • F/C
Ocala, Fla.



33 Colin Voss
6-7 • 240 • Jr. • F
Grand Rapids, Mich.



44 Keith Coleman
6-10 • 250 • Jr. • F
Philadelphia



HEAD COACH
Tony Benford



NORTH TEXAS BASKETBALL